

TIME FOR INSTALLATION

30 MINS. - 1 HOUR

# RCI OFFROAD

EASY

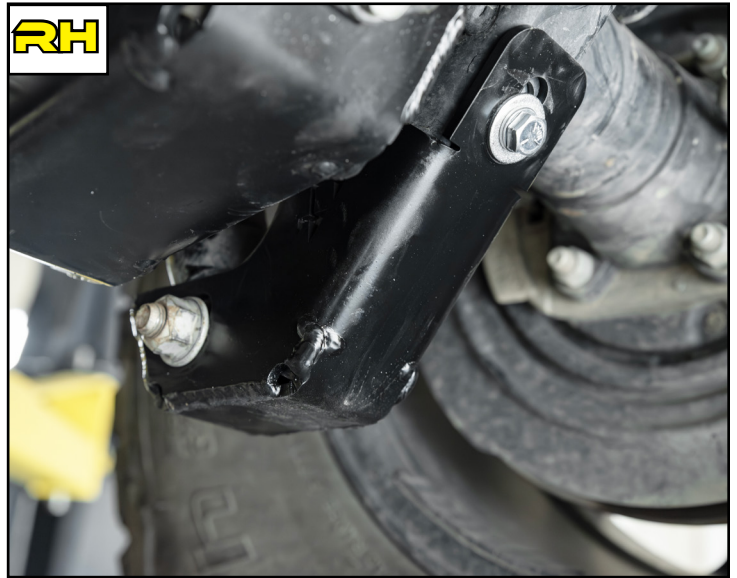
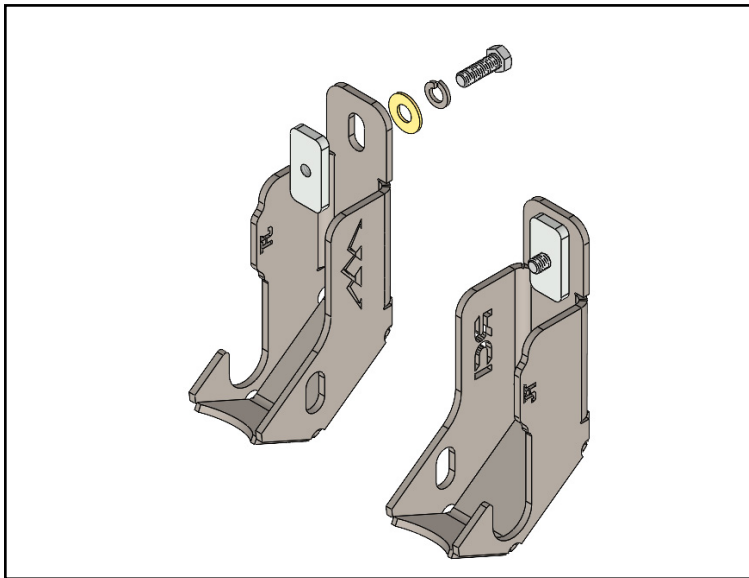
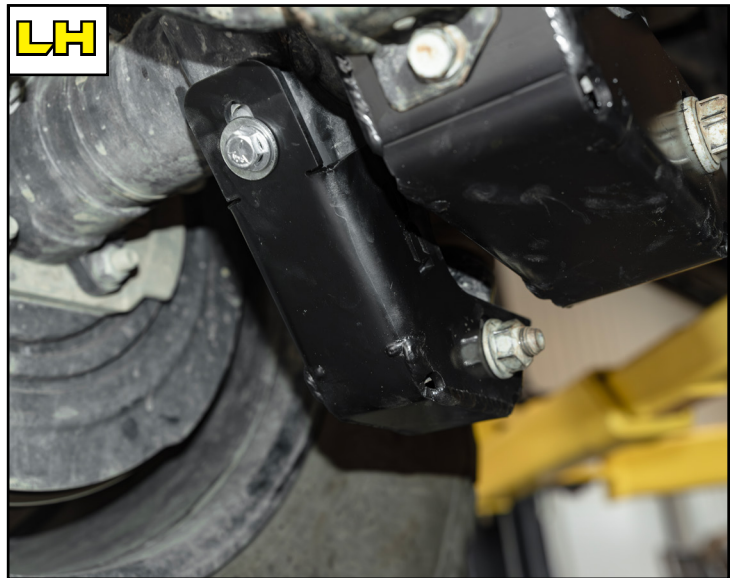


BASIC SKILLS  
REQUIRED

## 20+ Jeep Gladiator JT Rear Shock Skid Plate Installation Guide

Contact RCI: [SALES@RCIOFFROAD.COM](mailto:SALES@RCIOFFROAD.COM)  
(970) 797-3089

Part Number	Description	Qty:
SM-01406	JT Shock Skid Plate - Driver	1
SM-01407	JT Shock Skid Plate - Passenger	1
SM-01037	.375 Track Nut	2
HK-00067	JT Shock Skid Plate Hardware Kit:	1
HW-00026	3/8 USS Flat Washer Thru Hard	2
HW-00029	3/8 Split Lock Washer Zinc	2
HW-00064	3/8-16 x 1 1/8" Hex Cap Screw	2



**Caution:** Use hand tools, impact wrenches may cause damage if over torqued.

**Read the entire notes and instructions before installation.**

# Installation Notes

## Installation Notes:

**RH** (Mountains Logo) refers to the passenger side of the vehicle.

**LH** (RCI logo) refers to the driver side of the vehicle.

Always use the proper torque specifications.

If applicable to this installation, torque specifications will be listed throughout the document.

Please read all of these instructions and familiarize yourself with the complete process **BEFORE** you begin.

## General Safety:

Park your car in a safe, well lit, level area.

Shut the engine off and remove the key from the ignition switch.

Make sure any remote start devices are properly disabled.

**ALWAYS** wear safety glasses.

Make sure the parking brake is applied until the vehicle is safely lifted and supported.

Whether lifting a vehicle using an automotive lift or a hydraulic jack, utilize the factory specified lift points.

Lifting a vehicle in an incorrect location can cause damage to the suspension/running gear.

**ALWAYS** support the vehicle with properly rated jack stands.

**ALWAYS** read and follow all safety information and warnings for the equipment you are using.

## Required Tools:

1/4", 3/8" & 1/2" Socket Sets & Ratchets

Floor Jack

Jack Stands

Combination Wrench Set

Plier Set

Torque Wrenches

## Installation Overview:

Before installation, remove all components and hardware from their packaging and verify that all the components are present.

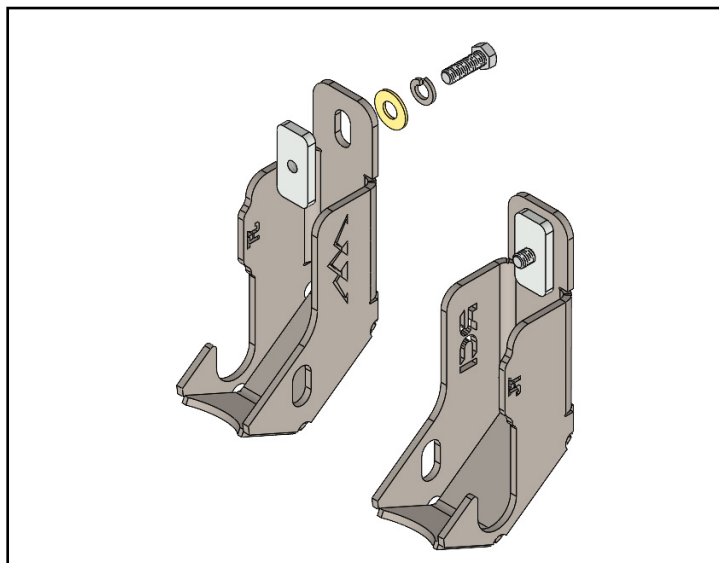
## New Rear Shock Skid Plate Orientation:



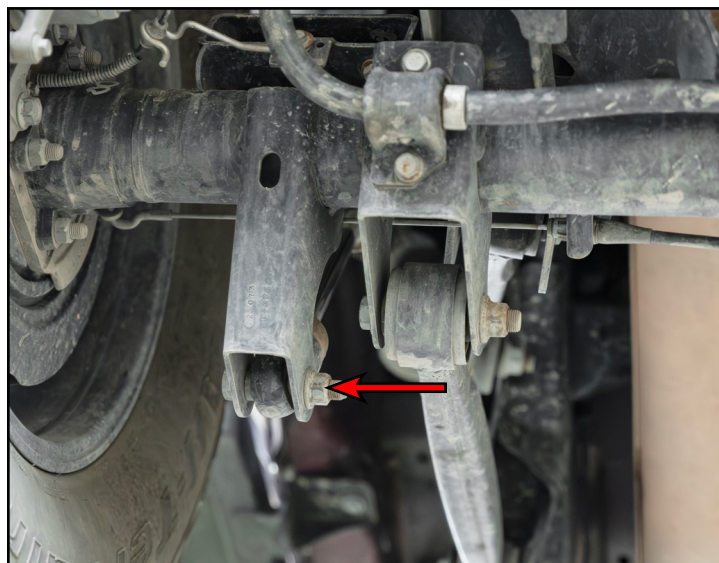
# Installing the New Rear Shock Skid Plate

**Step #1**

Remove all components and hardware from their packaging and verify all components are present.

**Step #2** | 18mm Socket & Ratchet

Remove the nut (arrow) that secures the lower shock bolt to the mount.



# Installing the New Rear Shock Skid Plate

## Step #3

Slide the lower shock bolt until it is flush with the lower shock mount as shown.



## Step #4

Install the new rear shock skid plate, then align the mounting location with that of the lower shock mount and slide the lower shock bolt back into place as shown.



# Installing the New Rear Shock Skid Plate

## Step #5

Align the provided mounting plate (highlighted in **GREEN**) with the upper shock skid mounting location from the front side of the mount as shown.



## Step #6 15mm Socket & Ratchet

Loosely install the bolt to secure the upper mounting location in place.



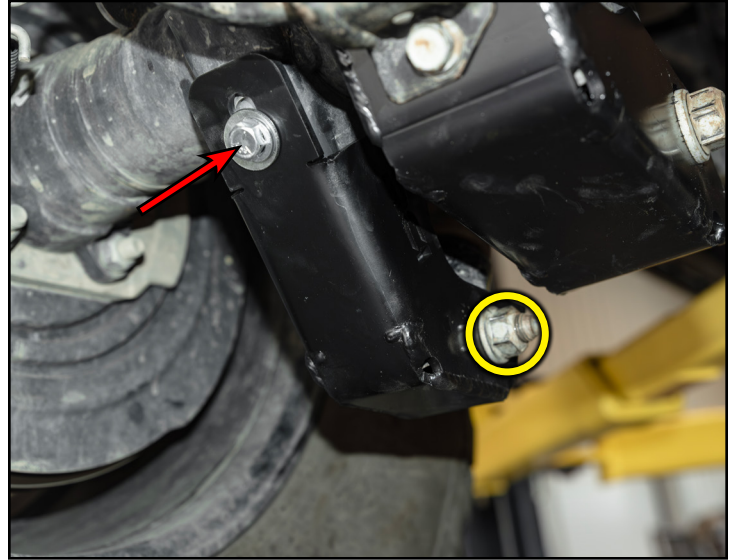
# Installing the New Rear Shock Skid Plate

## Step #7 | 15mm, 18mm Sockets & Torque Wrench

Adjust the skid plate until desired fitment has been achieved, then torque the lower shock nut (circled in **YELLOW**) to 89 Ft-lbs (120 Nm).

Torque the upper shock skid bolt (arrow) to 42 Ft-lbs (57 Nm).

**Tech tip:** Torque the hardware only while the vehicle is on its full weight and at ride height.



## Step #8

Repeat **steps 2-7** for the RH lower shock skid plate installation.

**Tech tip:** Cycle the suspension to ensure that the shock body does not come in contact with the lower shock skid plate during suspension travel. Loosen the hardware, adjust the skid plate and re-tighten the hardware as necessary.

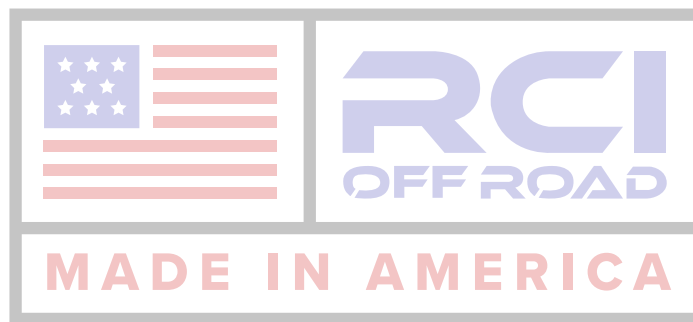


**CONGRATULATIONS, YOUR INSTALLATION IS COMPLETE!**

**ENJOY YOUR NEW RCI PROTECTION!**



**Share your new install with us on social media!  
We love seeing our products in the wild!**



**Follow us on social media:**  
[instagram.com/rcioffroad/](https://www.instagram.com/rcioffroad/)  
[facebook.com/RCIOffroad](https://www.facebook.com/RCIOffroad)  
[youtube.com/@RCIOFFROAD](https://www.youtube.com/@RCIOFFROAD)

**Contact:**  
1.970.797.3089  
[SALES@RCIOFFROAD.COM](mailto:SALES@RCIOFFROAD.COM)  
6701 N. FRANKLIN AVE. LOVELAND, CO 80538

**These instructions are provided as a courtesy by RCI Offroad**

Disclaimer: The products sold by RCI Metalworks are intended for off-road use only, should not be modified, and are for use only on the vehicle(s) specifically stated. RCI Metalworks makes no warranties express or implied, including of fitness for a particular purpose or merchantability. RCI Metalworks will not be liable for any damages arising out of the use or misuse of its products. It is the customers' responsibility to ensure the products are safely and properly attached to the vehicle, and all products should be installed by trained professionals. We strive to maintain extremely high-quality standards; however, all RCI Metalworks products are individually handcrafted, may vary slightly, and may contain minor imperfections. Due to the nature of raw aluminum, the material may have minor scratches and other blemishes caused by the manufacturing process, especially on the back side of product. RCI Metalworks is constantly seeking to improve its products and reserves the right to make changes to any product.