

TIME FOR INSTALLATION

1 - 2 HOURS

RCI OFFROAD

EASY

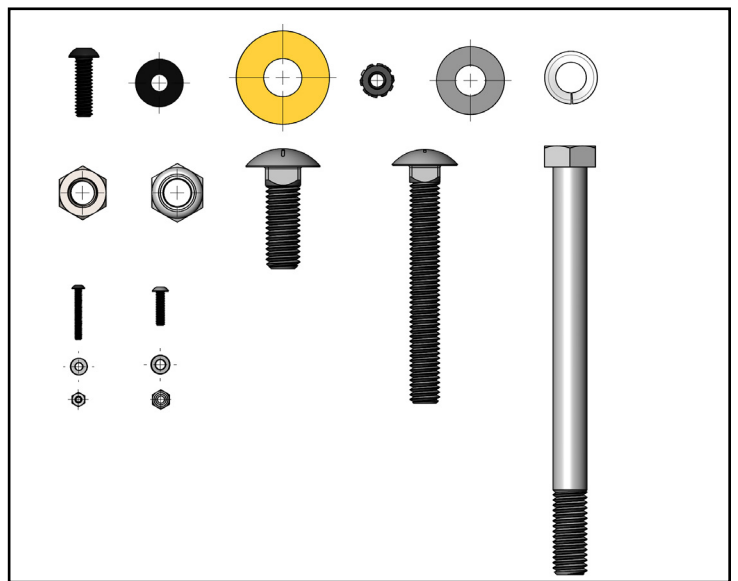


BASIC SKILLS
REQUIRED

18+ Jeep Wrangler JL/JLU Rear Tire Swing Out Installation Guide

Contact RCI: SALES@RCIOFFROAD.COM
(970) 797-3089

| Part Number | Description | Qty: |
|-------------|--|------|
| * | 18+ JLU Swing Out | 1 |
| * | 24 Tacoma Latch Catch | 1 |
| * | 24 Tacoma Tire Mount Male | 1 |
| * | 18 JLU Tire Mount Female | 1 |
| SM-01325 | .075MS JLU Swing-out 3rd Brake Plate | 1 |
| SM-01326 | .075MS JLU License Plate Relocation Bracket Brace | 1 |
| SM-01327 | .075MS JLU Camera Relocation Bracket | 1 |
| SM-01328 | .75SS JLU Pin Skid | 1 |
| SM-01332 | .188MS JLU Swing Out Hinge Bracket | 1 |
| SM-01334 | .188MS JLU Tire Mount Spacer Plate | 1 |
| SM-01336 | .188MS Pin Skid Mount | 1 |
| SM-01337 | .188MS V Catch Bumper Mount | 1 |
| 3P-00357 | 1.5" Ball Spring Plunger | 1 |
| 3P-00358 | 3" Ball Spring Plunger | 1 |
| 3P-00531 | .188 HDPE Wear Pad | 4 |
| 3P-00532 | Swing Out Bushing Delrin | 2 |
| 3P-00533 | Swing Out Bushing Inner Crush Sleeve | 1 |
| 3P-00536 | Swing Out Latch | 1 |
| 3P-00540 | Jeep JLU Wheel Stud | |
| 3P-00541 | JLU Wiring Harness Kit - License Plate 40" Extension | 1 |
| 3P-00542 | JLU Wiring Harness Kit - 3rd Brake Light | 1 |
| 3P-00543 | JLU Wiring Harness Kit - License Plate 10" Extension | 1 |
| HK-00186 | JLU Swing Out Hardware Kit: | 1 |



Caution: Use hand tools, impact wrenches may cause damage if over torqued.

Read the entire notes and instructions before installation.

NOTE: Rear tire swing out is **ONLY** compatible with an RCI Rear Bumper.

Kit Contents: JLU Swing-Out Hardware Kit:

| Part number | Description | Qty: |
|-------------|--------------------------------------|------|
| HW-00017 | 1/4-20 x 7/8 Button Soc Cap Black | 20 |
| HW-00019 | 1/4 USS Flat Washer Black Zinc | 28 |
| HW-00022 | 1/2 USS Flat Washer Thru Hard | 16 |
| HW-00031 | 1/4-20 Keps Nut 18-8 S.S. Black Zinc | 20 |
| HW-00044 | 7/16 USS Flat Washer Zinc | 2 |
| HW-00045 | 7/16 Split Lock Washer Zinc | 2 |
| HW-00047 | 7/16-14 FIN Hex Nut GR-5 Zinc | 2 |
| HW-00215 | 1/2-13 x 1.5 Carriage Bolt | 14 |
| HW-00216 | 1/2-13 x 6 Hex Bolt | 1 |
| HW-00217 | 7/16-14 x 3.5 Carriage Bolt | 2 |
| HW-00228 | 3-48 x 0.75 Button Head Screw | 3 |
| HW-00229 | 3-48 Steel Hex Nut | 3 |
| HW-00230 | 3 Steel SAE Washer | 3 |
| HW-00232 | 5-40 x 0.5 Button Head Screw | 2 |
| HW-00233 | 5-40 Stainless Steel Hex Nyloc Nut | 2 |
| HW-00234 | 5 Steel SAE Washer | 4 |

DISCLAIMER:

The products sold by RCI Metalworks are intended for off-road use only, should not be modified, and are for use only on the vehicle(s) specifically stated. RCI Metalworks makes no warranties express or implied, including of fitness for a particular purpose or merchantability. RCI Metalworks will not be liable for any damages arising out of the use or misuse of its products. It is the customers' responsibility to ensure the products are safely and properly attached to the vehicle, and all products should be installed by trained professionals. We strive to maintain extremely high-quality standards; however, all RCI Metalworks products are individually handcrafted, may vary slightly, and may contain minor imperfections. Due to the nature of raw aluminum, the material may have minor scratches and other blemishes caused by the manufacturing process, especially on the back side of the product. RCI Metalworks is constantly seeking to improve its products and reserves the right to make changes to any product.

Installation of an RCI bumper requires removal of factory-installed components such as crash bars and foam impact absorbers. These components are designed for vehicle safety and impact absorption, and their removal may negatively impact occupant protection in a crash. RCI is not responsible for the removal of these components, and the owner/installer assumes all risks associated with their removal and any resulting consequences. It is the owner/installer's sole responsibility to understand the implications of removing these components before proceeding with installation. The installation of this RCI bumper, improper installation of this RCI bumper, and use or misuse of this RCI bumper with other components or failure to use it in conjunction with other components, could result in or cause serious personal injury, property damage or death.

RCI bumpers are not crash-tested and are intended for off-road use only. Vehicle owners are responsible for testing and recalibrating any affected sensors after bumper installation. While RCI may conduct preliminary sensor functionality checks during product development, this does not constitute testing to Original Equipment Manufacturer (OEM) specifications. RCI is not responsible and does not accept liability, for breakage or failure of parts as a result of rugged off-road use or reckless and/or improper installation. Modifications to your vehicle are done at your own risk and RCI does not accept liability or responsibility arising from damage caused by installing parts or doing modifications.

RCI performs off-road testing on its bumpers, including winch pulls, static and dynamic recovery pulls, and general off-road use. However, RCI is not liable for any damages arising from the use or misuse of its products. Customers are responsible for ensuring products are safely and properly attached to their vehicle, and professional installation is strongly recommended. After installing any off-road product, customers should test and recalibrate all safety sensors to ensure proper functionality. Do not rely on any safety sensor functionality until this verification is complete.

RCI Offroad bumpers with receiver hitches are not load rated. Using a receiver hitch for towing or other heavy-duty tasks is not recommended unless explicitly stated by the manufacturer. The bumper and receiver hitch are intended for off-road recovery use and not designed for sustained towing or load-bearing applications. Any misuse, such as towing or overloading, may result in bumper failure, vehicle damage, or personal injury. RCI is not responsible for any damages or injuries resulting from the use of the bumper with a receiver hitch beyond its intended purpose.

If an RCI product is purchased by a third party, such as a dealer, wholesaler, or installer, it is the third party's responsibility to inform the end customer of this disclaimer.

Installation Notes

Installation Notes:

RH refers to the passenger side of the vehicle.

LH refers to the driver side of the vehicle.

Always use the proper torque specifications.

If applicable to this installation, torque specifications will be listed throughout the document.

Please read all of these instructions and familiarize yourself with the complete process **BEFORE** you begin.

General Safety:

Park your car in a safe, well lit, level area.

Shut the engine off and remove the key from the ignition switch.

Make sure any remote start devices are properly disabled.

ALWAYS wear safety glasses.

Make sure the parking brake is applied until the vehicle is safely lifted and supported.

Whether lifting a vehicle using an automotive lift or a hydraulic jack, utilize the factory specified lift points.

Lifting a vehicle in an incorrect location can cause damage to the suspension/running gear.

ALWAYS support the vehicle with properly rated jack stands.

ALWAYS read and follow all safety information and warnings for the equipment you are using.

Required Tools:

1/4", 3/8" & 1/2" Socket Sets & Ratchets

Floor Jack

Jack Stands

Combination Wrench Set

Plier Set

Torque Wrenches

Installation Overview:

Before installation, remove all components and hardware from their packaging and verify that all the components are present.

Section 1: Removing the Stock Components

Step #1 | T30 Torx Socket & Ratchet

Remove all components and hardware from their packaging and verify that all the components are present.

Turn the fastener (arrow) counter clockwise to unlock the rear camera cover, then remove it from the vehicle and set it aside.

Remove the lug nuts, then remove the spare tire from the vehicle.

NOTE: The installation of an spare tire carrier delete is necessary before installing the RCI Rear Tire Swing Out.



Step #2 | Plastic Trim Removal Tool

Open the rear door, then pry the rear door plastic panel upward using a non-marring tool to release the mounting tabs. To avoid breaking any mounting tabs pull the panel straight back when releasing the tabs.



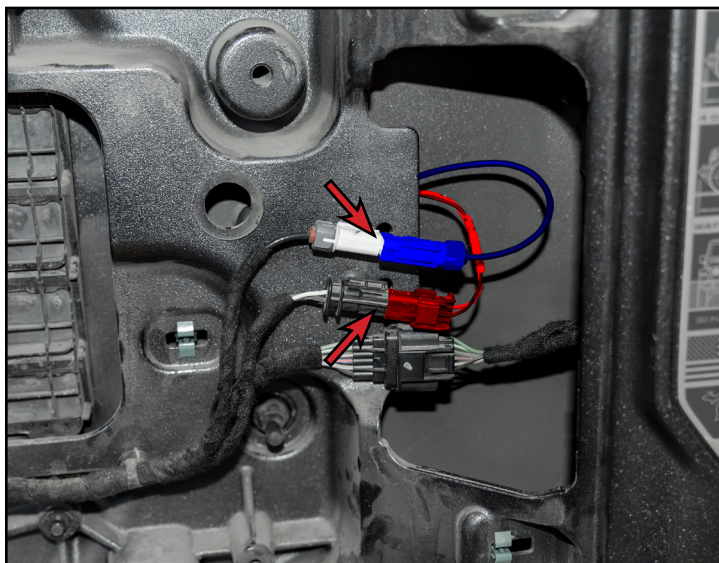
Section 1: Removing the Stock Components

Step #3

Disconnect the connectors (arrows) to the centered rear high mounted brake light and rear camera harnesses.

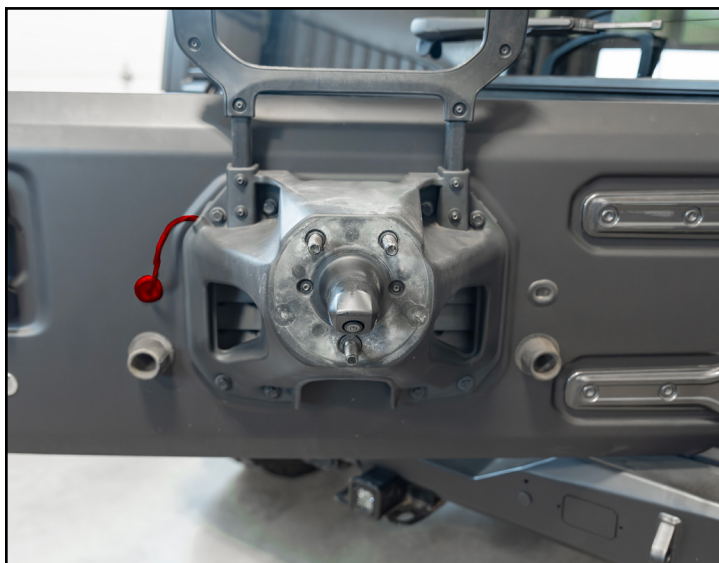
For the rear camera connector (highlighted in **BLUE**), press down on the lock tab and pull away to release the rear camera harness.

For the centered rear high mounted brake light connector (highlighted in **RED**), pull the red lock tab upward, then press down the black lock tab and pull away to release the brake light harness.



Step #4

Pull the rubber grommet and wiring harness (highlighted in **RED**) away from the rear door to release the wiring harness from the vehicle.



Section 1: Removing the Stock Components

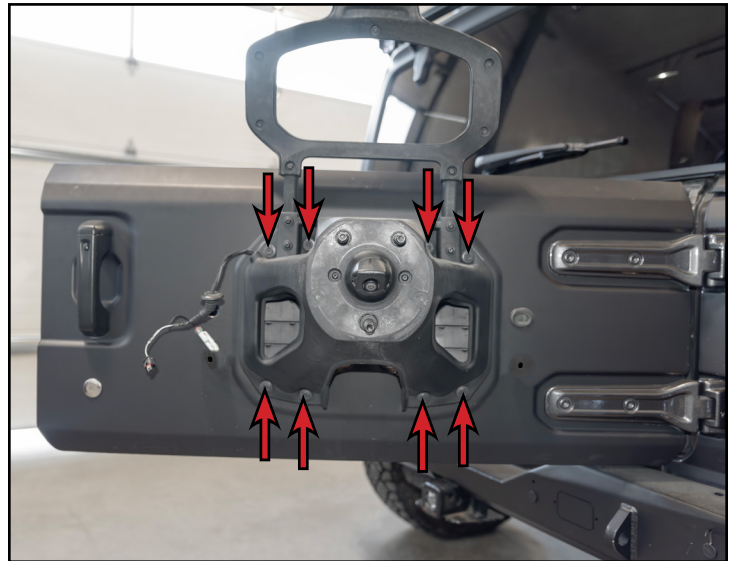
Step #5

Remove the rubber grommets (circled in **YELLOW**) from the rear door.



Step #6 13mm Socket & Ratchet

Support the rear tire carrier from underneath, then remove the bolts (arrows) that secure the tire carrier to the rear door. Safely set the spare tire carrier assembly aside.



Section 1: Removing the Stock Components

Step #7 | T25 Torx Socket & Ratchet

Remove the screws (arrows) that secure the rear camera mount and lug stud plate to the spare tire carrier.



Step #8 | Dead Blow -OR- Soft Faced Hammer

Lightly tap on the wheel studs to release the wheel stud plate and rear camera mount from the spare tire carrier.



Section 1: Removing the Stock Components

Step #9 | T25 Torx Socket & Ratchet

Remove the screws (arrows) that secure the upper half of the spare tire carrier to the lower half, then pull the lower half away to separate the two halves.



Step #10

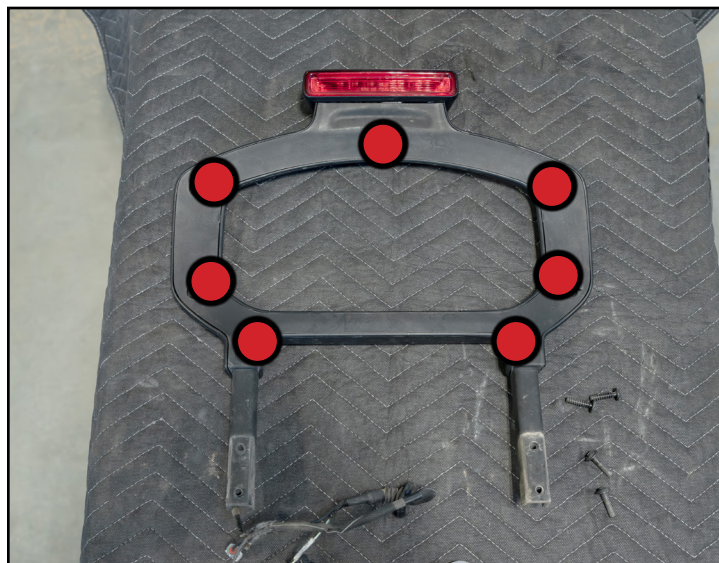
Free the rear camera wiring harness (highlighted in **RED**) from the spare tire carrier.



Section 1: Removing the Stock Components

Step #11 | T25 Torx Socket & Ratchet

Remove the screws (RED circles) that secure the cover for the upper tire carrier half, then remove the cover to free the wiring harness.



Step #12

Disconnect the wiring harness (highlighted in RED) from the third brake light.



Section 1: Removing the Stock Components

Step #13 | T25 Torx Socket & Ratchet

Remove the screws (arrows) that secure the third brake light to the tire carrier and set them aside.



Step #14 | Rotary Tool

The material (highlighted in **RED**) will need to be removed and ground flat in order to install the OEM third brake light into the new RCI bracket.



Section 1: Removing the Stock Components

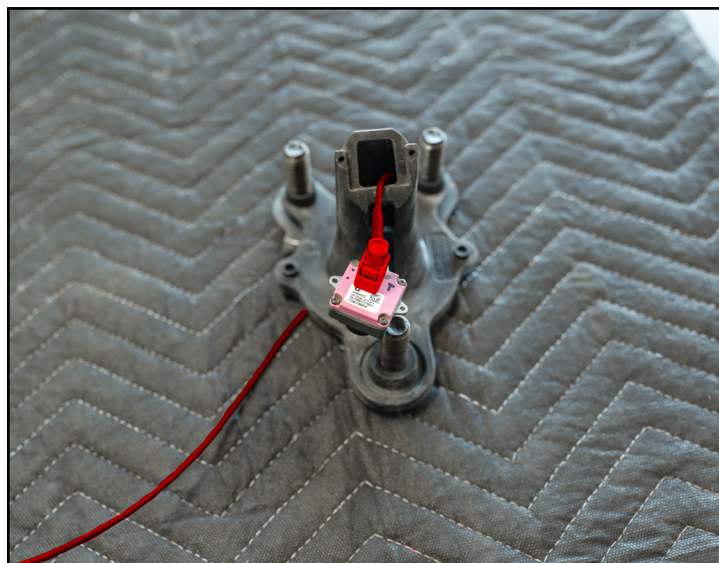
Step #15 | T8 Torx

Remove the screws (arrows) that secure the rear camera to the rear camera mount.



Step #16

Disconnect the rear camera wiring harness (highlighted in **RED**) from the rear camera, and remove the harness from the rear camera mount.

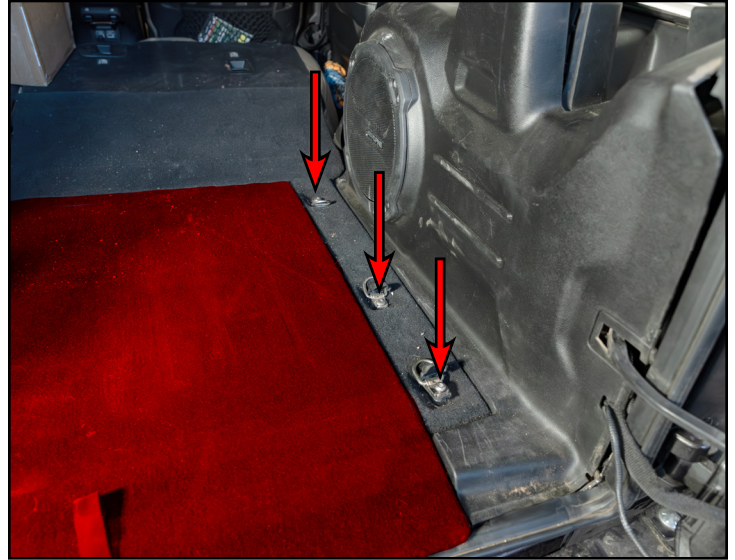


Section 1: Removing the Stock Components

Step #17 T40 Torx Socket & Ratchet

Lift and remove the rear cargo cover (highlighted in **RED**) from the vehicle, then safely set it aside.

Pry the plastic covers upward for the rear cargo tie downs, then remove the screws (arrows) that secure the tie down and carpeted panel to the vehicle.



Step #18

Release the tab (arrow), then slide the jack storage cover to the left to remove it from the vehicle and set it aside.



Section 1: Removing the Stock Components

Step #19

Release the plastic cover (highlighted in **RED**) to access the screw that secures the passenger side (RH) tail light to the vehicle.



Step #20 T40 Torx Socket & Ratchet

Remove the screw (arrow) that secures the rear tail light to the vehicle.



Section 1: Removing the Stock Components

Step #21

Pull the tail light rear ward to free it from its mounting location.

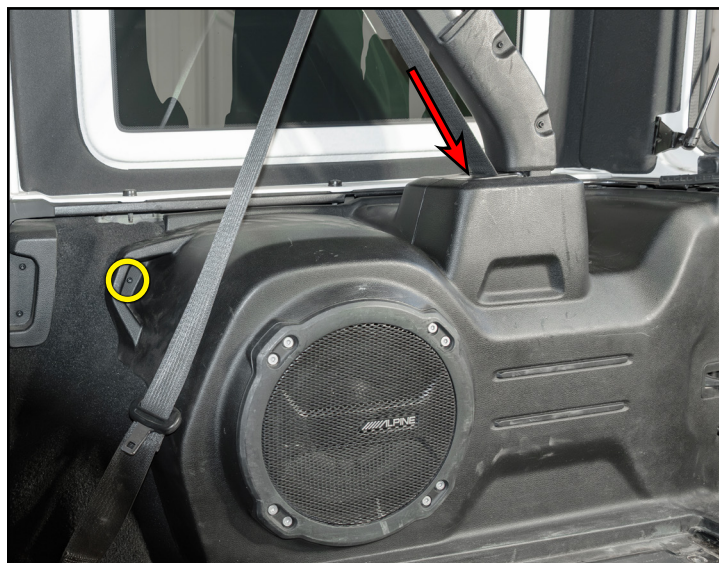
While supporting the RH tail light disconnect the wiring harness (highlighted in **RED**) and remove the tail light assembly and safely set it aside.



Step #22 T25 Torx Socket & Ratchet

Remove the screw (circled in **YELLOW**) that secures the RH rear interior plastic panel to the vehicle and set it aside.

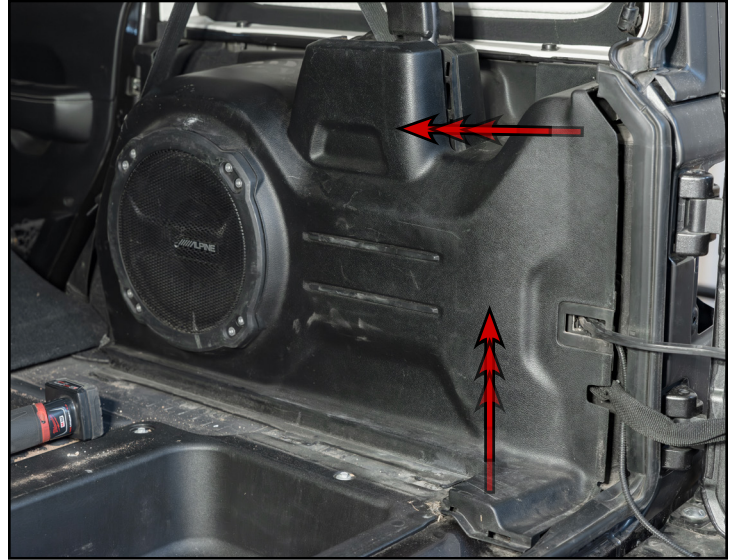
Release the seatbelt guide panel (arrow) by using a non marring tool and prying upward to release the retention tabs.



Section 1: Removing the Stock Components

Step #23 | Panel Trim Tool

Using a non marring tool, pry the RH rear interior plastic panel starting at the bottom upward, then at the frontmost and rearmost sides pull straight back to release the retention tabs.



Step #24

If the RCI rear bumper was previously installed, remove the rear bumper to prepare for installation of the new RCI rear tire swing out. If an RCI rear bumper was purchased with the swing-out, perform *installation steps #1-11* before installing the rear bumper.

NOTE: The RCI 18+ Jeep Wrangler JL/JLU Rear Tire Swing-Out is **ONLY** compatible with an RCI 18+ Jeep Wrangler JL/JLU Rear Bumper.



Section 2: Installing the New Tire Swing Out

Step #1 | 13mm Socket & Torque Wrench

Install the spare tire carrier delete panel and torque the OEM bolts (circled in **YELLOW**) to 13 Ft-lbs (18 Nm).

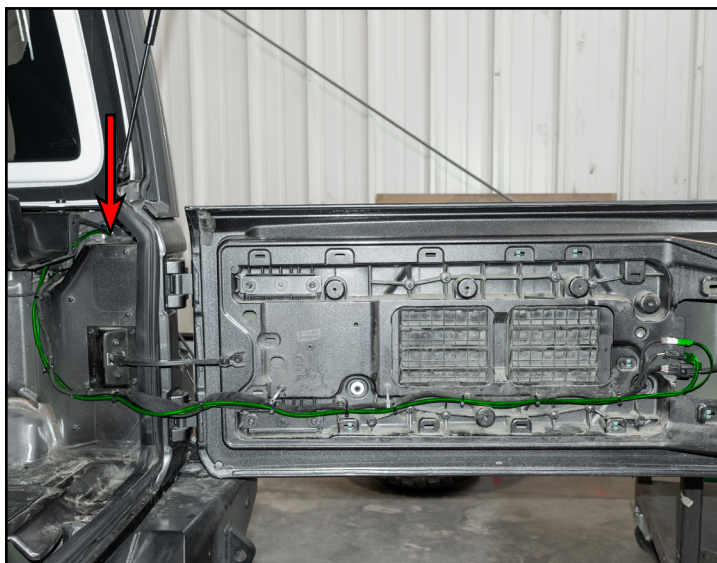
NOTE: The installation of an RCI Spare Tire Delete is necessary before installing the RCI Rear Tire Swing Out. Reference the ***18+ Jeep JL/JLU RCI Spare Tire Delete Installation Guide***.



Step #2

Route the center high mounted brake light and rear camera extension harnesses (highlighted in **GREEN**) along the OEM wiring harness and through the grommet (arrow) to the RH tail light mounting location.

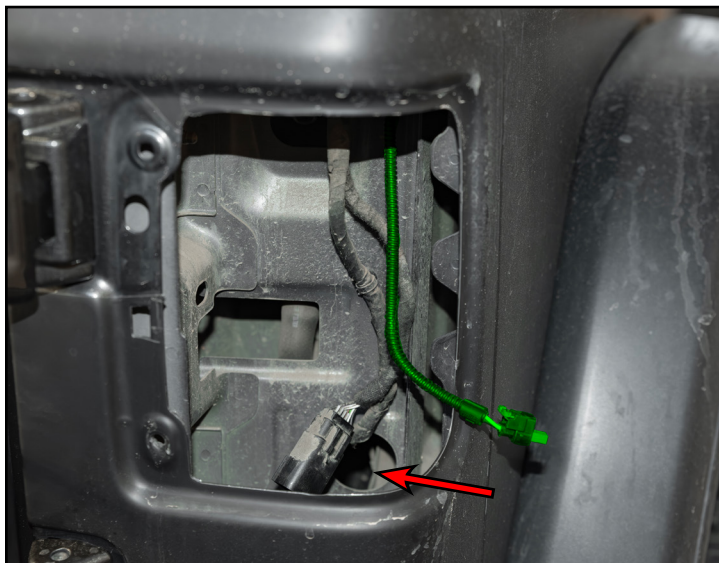
Once all harnesses are routed and re-connected, reinstall the interior panels in reverse order from removal.



Section 2: Installing the New Tire Swing Out

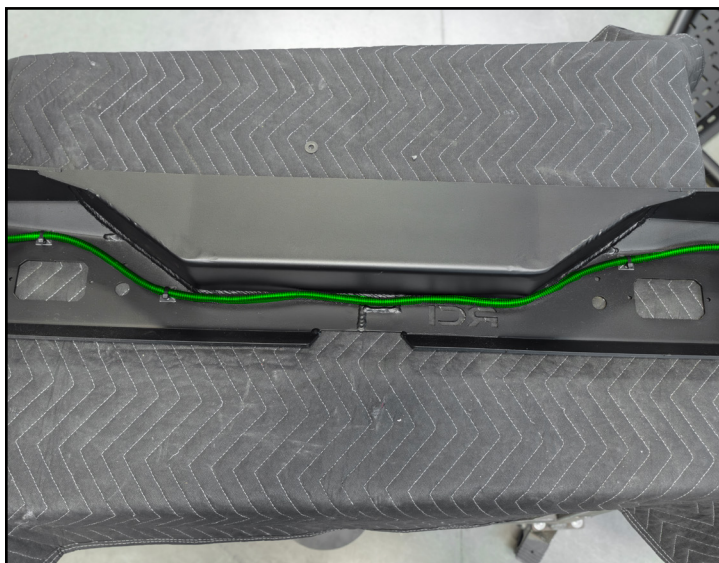
Step #3

Route the provided harness(es) (highlighted in **GREEN**) through the hole (arrow), then toward the wheel well and access the wiring from below and pull the wiring through.



Step #4

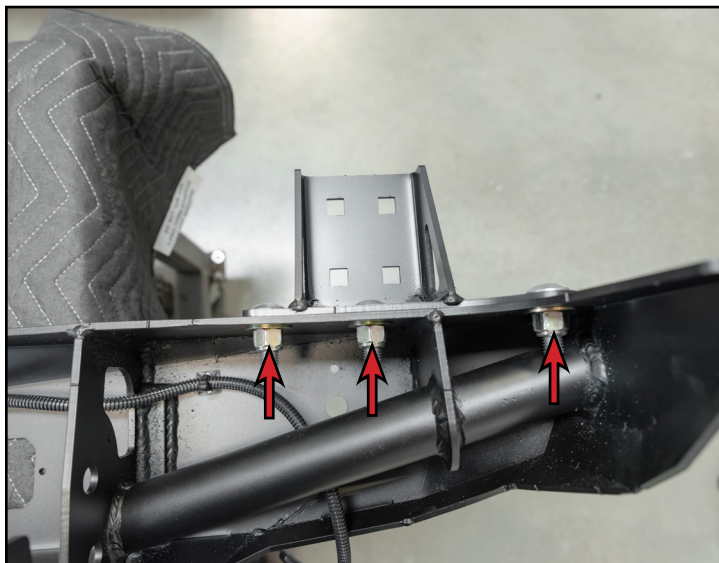
The license plate wiring extension harness (highlighted in **GREEN**) may be routed inside the rear bumper prior to installation/re-installation. Install any sensors or sensor delete brackets into the bumper.



Section 2: Installing the New Tire Swing Out

Step #5 | 3/4" Socket & Torque Wrench

Install the LH mounting bracket to the RCI rear bumper, then secure the LH bracket with the provided hardware, then torque the nuts (arrows) to 100 Ft-lbs (136 Nm).



Step #6

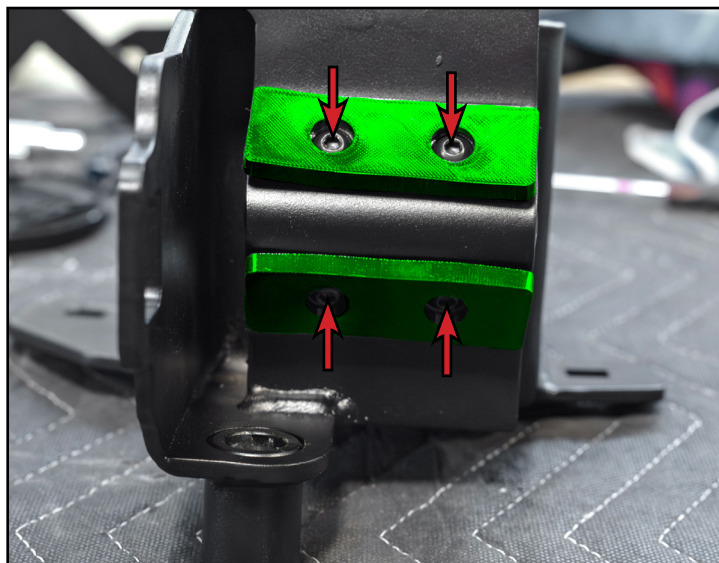
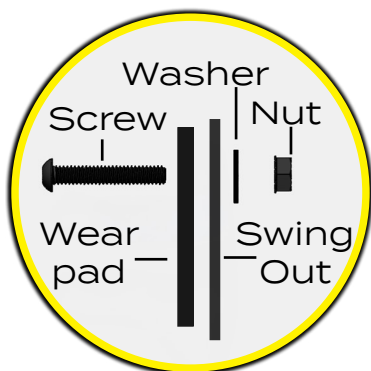
Install the provided 1/2" carriage bolts (arrows) into the slots for the LH swing out latch bracket as shown.



Section 2: Installing the New Tire Swing Out

Step #7 4mm Hex (Allen) & 11mm Wrench

Install the provided wear pads (highlighted in **GREEN**) into place on the LH mounting bracket and secure them using the provided 1/4" hardware (arrows).



Step #8 3/4" Socket & Torque Wrench

Align the previously installed carriage bolts with the mounting locations on the LH mounting bracket, then secure the latch bracket to the mounting bracket with the provided hardware and torque the nuts (circled in **YELLOW**) to 100 Ft-lbs (136 Nm).

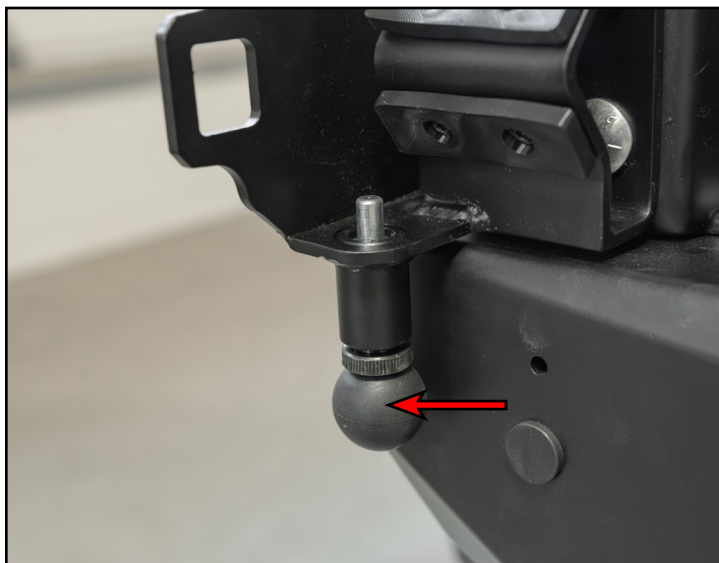


Section 2: Installing the New Tire Swing Out

Step #9

Install the provided 1.5" threaded ball spring plunger (arrow) into the mounting location on the LH rear tire swing out bracket.

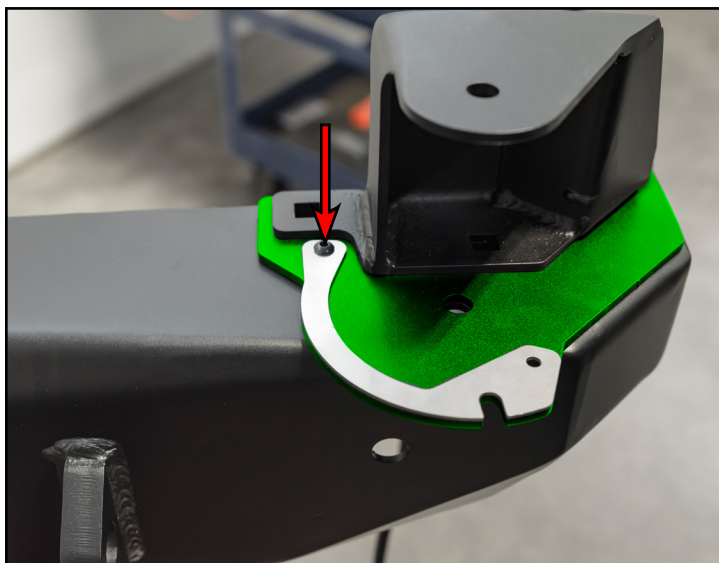
Tech tip: Apply blue loctite to the threads of the ball plunger prior to installation.



Step #10 4mm Hex (Allen) & 11mm Wrench

Align the mounting locations of the RH mounting bracket plate (highlighted in **GREEN**) with those on the RCI rear bumper. Align the stainless steel pin skid plate with the mounting bracket plate and rear bumper, then secure it with the provided 1/4" hardware (arrow).

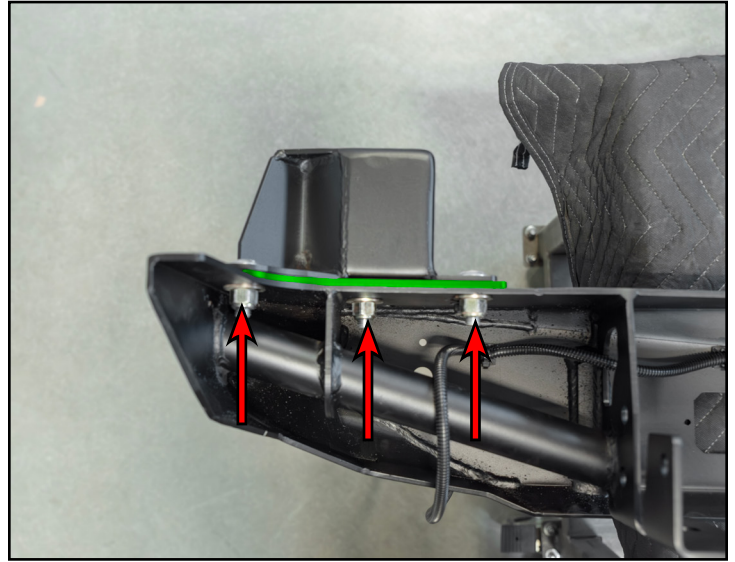
Tech Tip: Install the rearmost pin skid mounting hardware after the swing-out has been installed into the bracket for an easier installation of the swing-out.



Section 2: Installing the New Tire Swing Out

Step #11 | 3/4" Socket & Torque Wrench

Align the bottom RH bracket mounting plate and the RH upper mounting bracket with the mounting locations on the RH side of the RCI rear bumper, then secure them in place using the provided hardware. Torque the nuts (arrows) to 100 Ft-lbs (136 Nm).



Step #12

Install the rear bumper onto the vehicle. Reference the ***18+ Jeep Wrangler JL/JLU Rear Bumper Installation Guide***.



Section 2: Installing the New Tire Swing Out

Step #13

Route the center high mounted brake light and rear camera extension harnesses (highlighted in **GREEN**) in between the bumper and the vehicle.



Step #14 | Soft Faced Hammer -OR- Dead Blow

Install the provided delrin bushings (highlighted in **GREEN**) into the rear tire swing out.



Section 2: Installing the New Tire Swing Out

Step #15 | Soft Faced Hammer -OR- Dead Blow

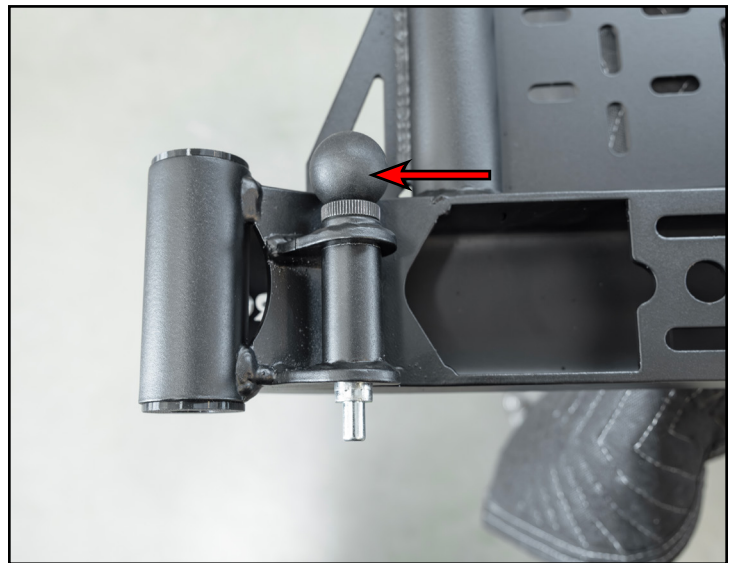
Install the provided bushing inner crush sleeve (highlighted in **GREEN**) into the previously installed bushings in the rear tire swing out.



Step #16

Install the provided 3" threaded ball spring plunger (arrow) into the mounting location on the RH side of the rear tire swing out.

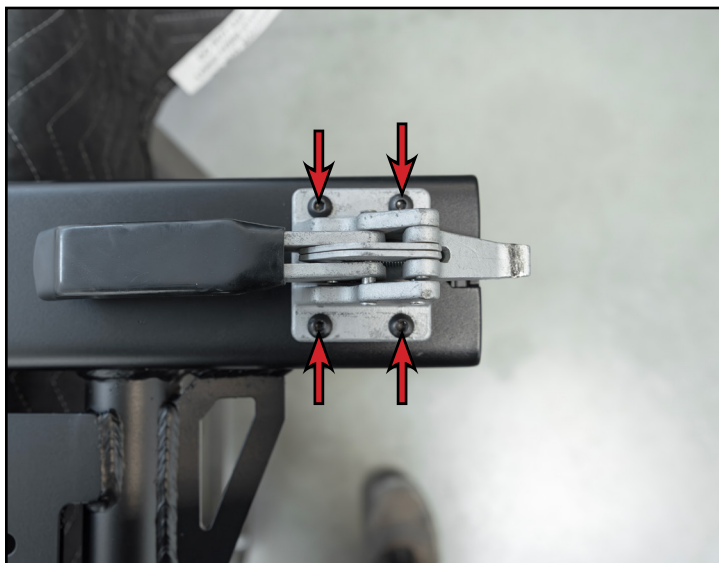
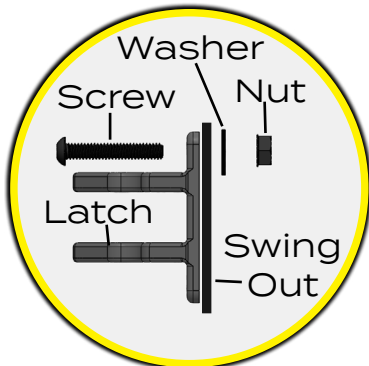
Tech tip: Apply blue loctite to the threads of the ball plunger prior to installation.



Section 2: Installing the New Tire Swing Out

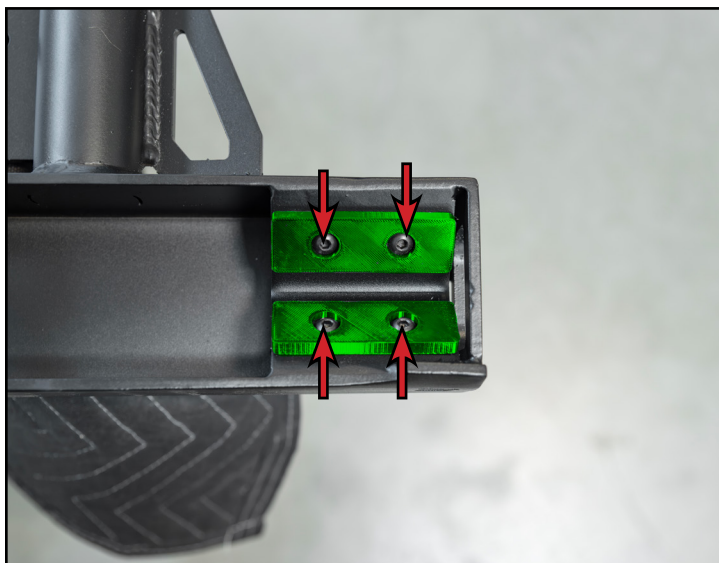
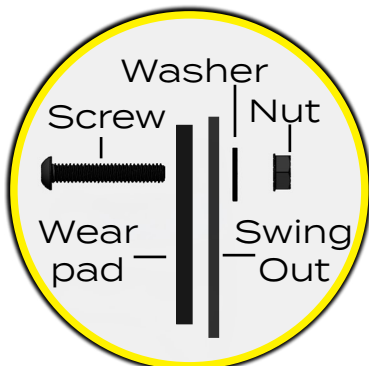
Step #17 | 4mm Hex (Allen) & 11mm Wrench

Secure the provided swing out latch to the rear tire swing out with the provided 1/4" hardware (arrows).



Step #18 | 4mm Hex (Allen) & 11mm Wrench

Install the provided wear pads (highlighted in **GREEN**) onto the LH side of the rear tire swing out and secure them in place using the provided 1/4" hardware (arrows).



Section 2: Installing the New Tire Swing Out

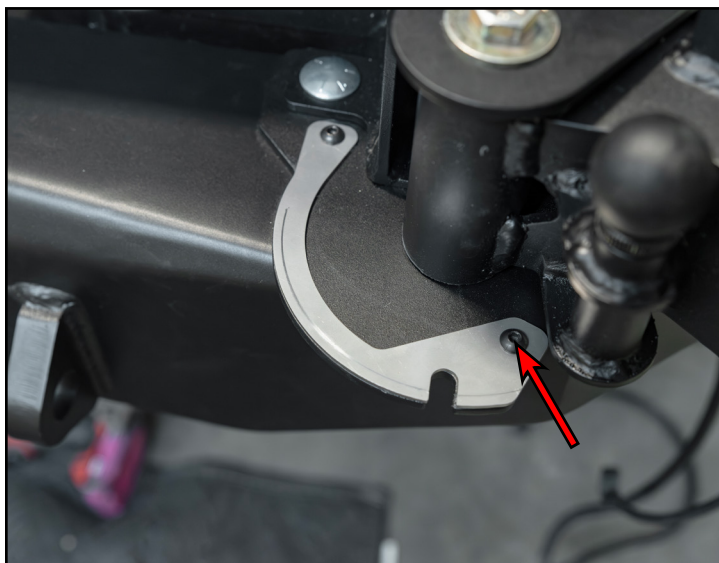
Step #19 | 3/4" Wrench, 3/4" Socket & Torque Wrench

Lift the assembled rear tire swing out and align the RH mounting location with the RH rear mounting bracket. Secure the swing out to the bracket using the provided 1/2" hardware (circled in **YELLOW**) and torque the nut to 110 Ft-lbs (149 Nm).



Step #20 | 4mm Hex (Allen) & 11mm Wrench

Secure the rearmost pin skid plate mounting location with the provided 1/4" hardware (arrow).



NOTE: The swing out is fully functional at this stage and can be latched closed or latched open for the remaining installation steps.

Section 2: Installing the New Tire Swing Out

Step #21 | 4mm Hex (Allen) & 11mm Wrench

Align the license plate bracket and license plate mounting locations with the mounting locations at the RH bottom of the swing-out and secure them to the swing-out with the provided 1/4" hardware (circled in **YELLOW**).

Route the license plate extension harness (highlighted in **GREEN**) through the hole in the license plate bracket as shown.



Step #22 | 5/64 Hex (Allen) & 5/16 Wrench

Secure the license plate light to the bracket with the provided hardware (circled in **YELLOW**).



Section 2: Installing the New Tire Swing Out

Step #23

Connect the license plate extension harness (highlighted in **GREEN**) to the OEM license plate wiring connector.



Step #24 3/4" Socket & Torque Wrench

Secure the tire carrier bracket to the rear tire swing out with the provided carriage bolts (circled in **YELLOW**) and torque the nuts to 100 Ft-lbs (136 Nm).

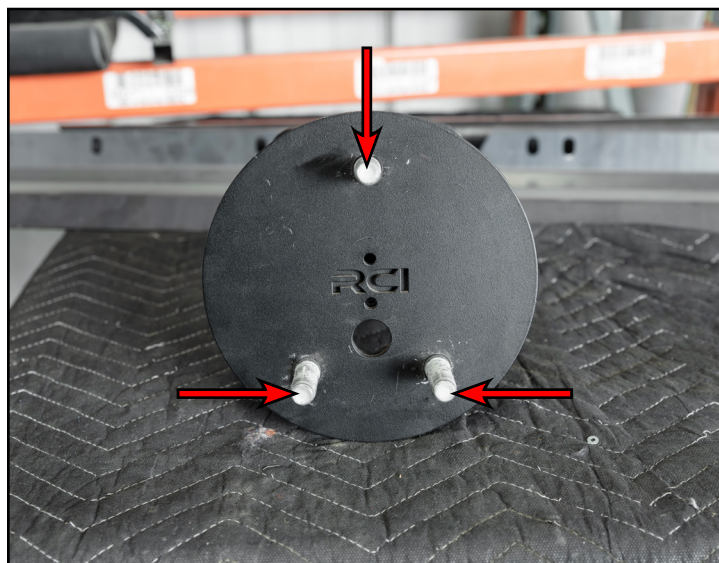


Section 2: Installing the New Tire Swing Out

Step #25 Stud Installation Tool -OR- Hammer

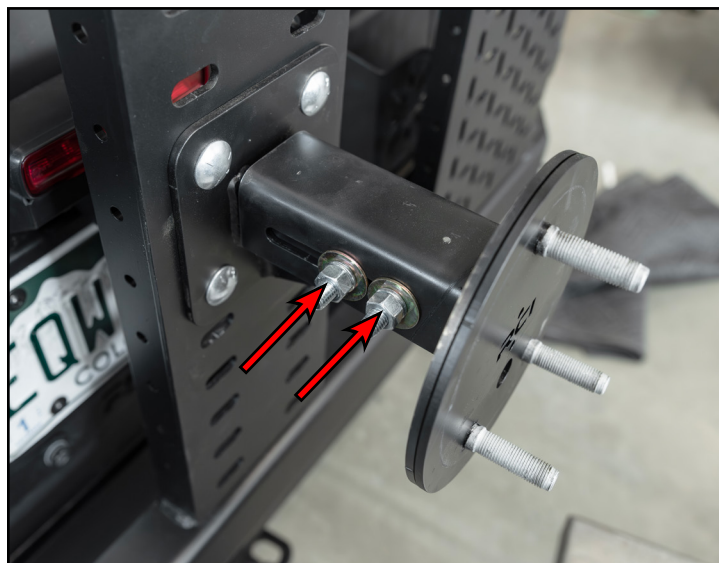
Align the holes in the logo plate with the tire mount bracket, then install the studs (arrows) through the bracket mount and the logo plate until they are fully seated into place.

Tech tip: If using a hammer or a stud installation tool isn't available, the studs can be installed with an open ended lug nut and a stack of washers that clear the wheel lug studs, that can be tightened to fully install the studs.



Step #26 3/4" Socket & Torque Wrench

Slide the assembled spare tire mount bracket to the previously installed bottom bracket, then secure the brackets together using the provided 7/16" hardware and torque the hardware (arrows) to 60 Ft-lbs (81 Nm).



Section 2: Installing the New Tire Swing Out

Step #27

Route the wiring (highlighted in **GREEN**) through the RH bracket to the swing-out.



Step #28

Route the center high mounted brake light and rear camera extension harnesses (highlighted in **GREEN**) along the swing-out and up to the hole in the tire mount plate.



Section 2: Installing the New Tire Swing Out

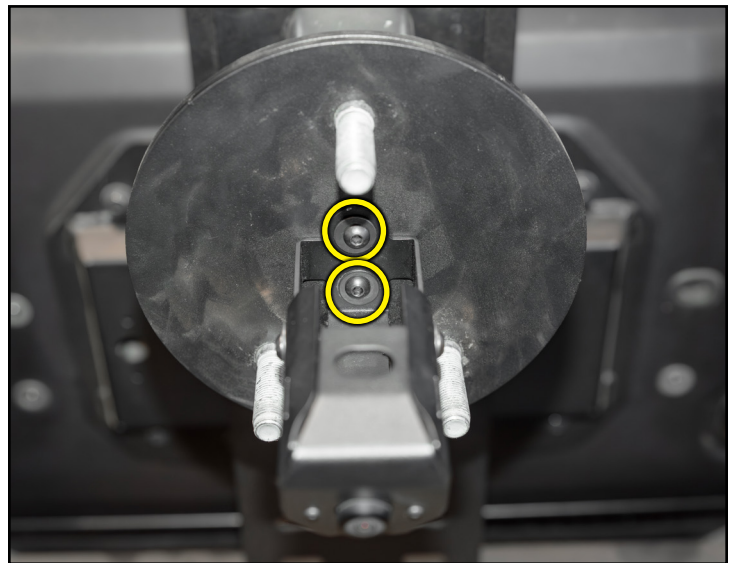
Step #29 Required Tools

Install the rear camera into the camera mounting bracket and secure it in place with the provided hardware (circled in **YELLOW**).



Step #30 4mm Hex (Allen) & 11mm Wrench

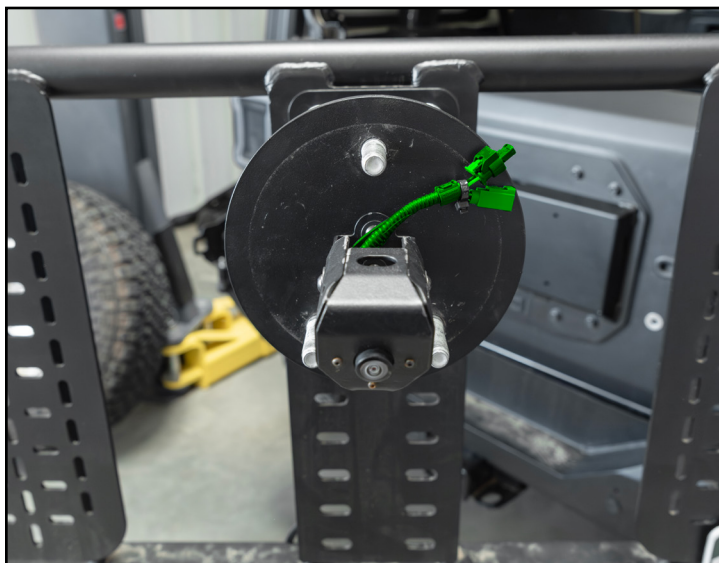
Align the mounting locations on the rear camera mount with the mounting locations on the rear tire carrier and secure the camera mount with the provided 1/4" hardware (circled in **YELLOW**).



Section 2: Installing the New Tire Swing Out

Step #31

Route center high mounted brake light and rear camera extension harnesses through the rear camera mounting bracket.



Step #32

Connect the rear camera harness (highlighted in **GREEN**) to the rear camera.



Section 2: Installing the New Tire Swing Out

Step #33 OEM Lug Nut Socket & Torque Wrench

Install the spare tire onto the previously installed spare tire mount, and torque the lug nuts to the manufacturer's torque specifications.



Step #34

Install the center high mounted brake light mounting bracket (highlighted in **GREEN**) through the rear camera mounting bracket as shown.



Section 2: Installing the New Tire Swing Out

Step #35

Connect the center high mounted brake light extension harness to the brake light, then align the mounting locations with the previously installed bracket.



Step #36 T25 Torx Socket & Ratchet

Secure the center high mounted brake light to the previously installed bracket by reusing the OEM screws (arrows) to secure it in place.

Tech Tip: To access the spare tire when it is mounted, the center brake light will need to be disconnected and removed from the bracket prior to removing the spare tire.

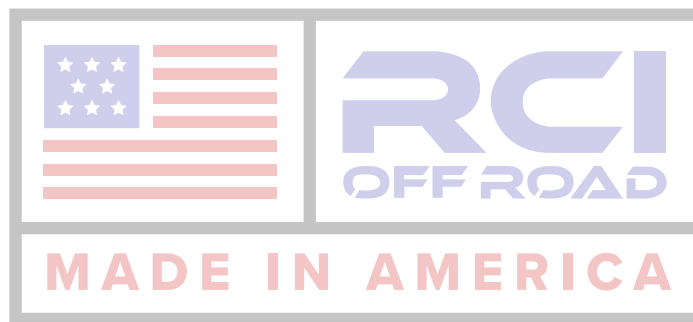


CONGRATULATIONS, YOUR INSTALLATION IS COMPLETE!

ENJOY YOUR NEW RCI PROTECTION!



**Share your new install with us on social media!
We love seeing our products in the wild!**



Follow us on social media:
[instagram.com/rcioffroad/#](https://www.instagram.com/rcioffroad/)
[facebook.com/RCIOffroad](https://www.facebook.com/RCIOffroad)
[youtube.com/@RCIOFFROAD](https://www.youtube.com/@RCIOFFROAD)

Contact:
1.970.797.3089
SALES@RCIOFFROAD.COM
6701 N. FRANKLIN AVE. LOVELAND, CO 80538

These instructions are provided as a courtesy by RCI Offroad

Disclaimer: The products sold by RCI Metalworks are intended for off-road use only, should not be modified, and are for use only on the vehicle(s) specifically stated. RCI Metalworks makes no warranties express or implied, including of fitness for a particular purpose or merchantability. RCI Metalworks will not be liable for any damages arising out of the use or misuse of its products. It is the customers' responsibility to ensure the products are safely and properly attached to the vehicle, and all products should be installed by trained professionals. We strive to maintain extremely high-quality standards; however, all RCI Metalworks products are individually handcrafted, may vary slightly, and may contain minor imperfections. Due to the nature of raw aluminum, the material may have minor scratches and other blemishes caused by the manufacturing process, especially on the back side of product. RCI Metalworks is constantly seeking to improve its products and reserves the right to make changes to any product.