

TIME FOR INSTALLATION

2-3 HOURS



MODERATE

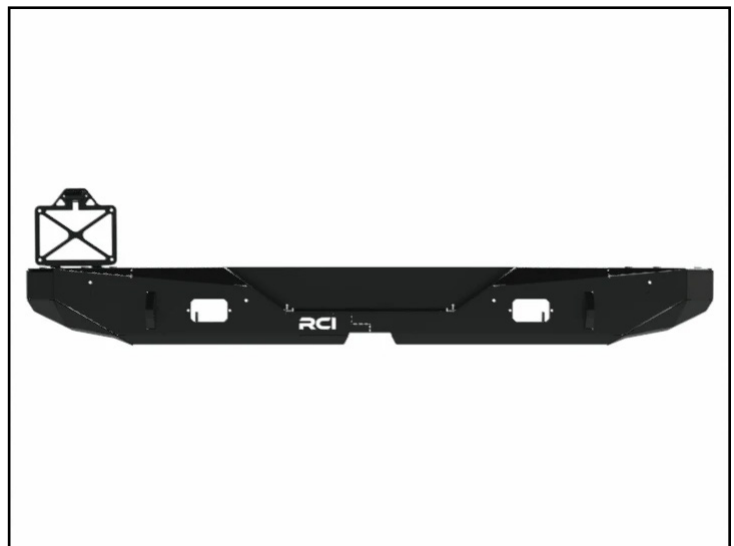
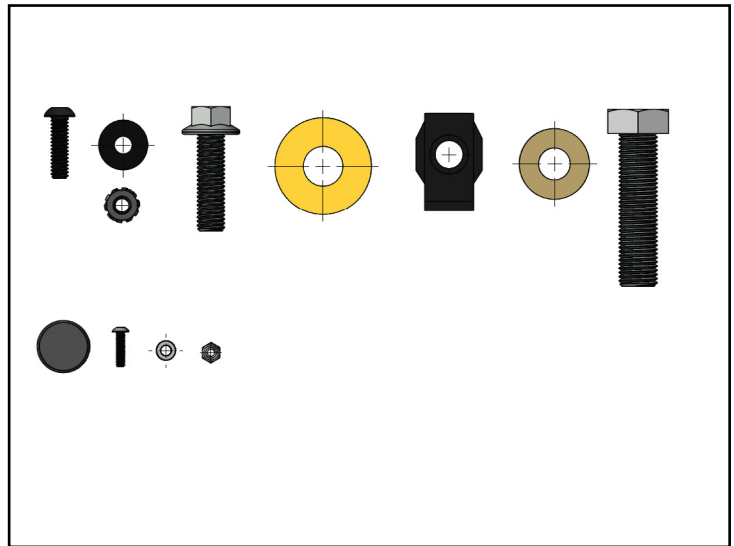


SOME EXPERIENCE RECOMMENDED

18+ Jeep JL, JLU Wrangler Rear Bumper Installation Guide

Contact RCI: SALES@RCIOFFROAD.COM
(970) 797-3089

Part Number	Description	Qty:
*	18+ JLU Rear Bumper	1
SM-01311	JLU Rear License Plate Relocation	1
SM-01319	JLU Passenger Mounting Plate	1
SM-01322	JLU Parking Sensor Clamp	4
SM-01410	SSC2 Light Cover Plate	2
3P-00541	JLU Wiring Harness Kit – License Plate Light 40"	1
HK-00183	18+ JLU Rear Bumper Kit:	1
HW-00017	1/4-20 x 7/8 Button Soc Cap Black	15
HW-00019	1/4 USS Flat Washer Blck Zinc	26
HW-00021	M10-1.5 x 35mm Hex Flange Bolt	2
HW-00022	1/2 USS Flat Washer Thru Hard	6
HW-00023	M10-1.5 U-Nut .90mm	2
HW-00026	3/8 USS Flat Washer Thru Hard	2
HW-00031	1/4-20 Keps Nut 18-8 S.S. Black	15
HW-00220	M14-1.5 x 55mm Hex Bolt	6
HW-00233	5-40 Stainless Steel Hex Nyloc Nut	2
HW-00234	5 Steel SAE Washer	2
HW-00232	5-40 x .5 Button Head Screw	2
HW-00227	.5625 Snap-in Plug	10



Caution: Use hand tools, impact wrenches may cause damage if over torqued.

Read the entire notes and instructions before installation.

DISCLAIMER:

The products sold by RCI Metalworks are intended for off-road use only, should not be modified, and are for use only on the vehicle(s) specifically stated. RCI Metalworks makes no warranties express or implied, including of fitness for a particular purpose or merchantability. RCI Metalworks will not be liable for any damages arising out of the use or misuse of its products. It is the customers' responsibility to ensure the products are safely and properly attached to the vehicle, and all products should be installed by trained professionals. We strive to maintain extremely high-quality standards; however, all RCI Metalworks products are individually handcrafted, may vary slightly, and may contain minor imperfections. Due to the nature of raw aluminum, the material may have minor scratches and other blemishes caused by the manufacturing process, especially on the back side of the product. RCI Metalworks is constantly seeking to improve its products and reserves the right to make changes to any product.

Installation of an RCI bumper requires removal of factory-installed components such as crash bars and foam impact absorbers. These components are designed for vehicle safety and impact absorption, and their removal may negatively impact occupant protection in a crash. RCI is not responsible for the removal of these components, and the owner/installer assumes all risks associated with their removal and any resulting consequences. It is the owner/installer's sole responsibility to understand the implications of removing these components before proceeding with installation. The installation of this RCI bumper, improper installation of this RCI bumper, and use or misuse of this RCI bumper with other components or failure to use it in conjunction with other components, could result in or cause serious personal injury, property damage or death.

RCI bumpers are not crash-tested and are intended for off-road use only. Vehicle owners are responsible for testing and recalibrating any affected sensors after bumper installation. While RCI may conduct preliminary sensor functionality checks during product development, this does not constitute testing to Original Equipment Manufacturer (OEM) specifications. RCI is not responsible and does not accept liability, for breakage or failure of parts as a result of rugged off-road use or reckless and/or improper installation. Modifications to your vehicle are done at your own risk and RCI does not accept liability or responsibility arising from damage caused by installing parts or doing modifications.

RCI performs off-road testing on its bumpers, including winch pulls, static and dynamic recovery pulls, and general off-road use. However, RCI is not liable for any damages arising from the use or misuse of its products. Customers are responsible for ensuring products are safely and properly attached to their vehicle, and professional installation is strongly recommended. After installing any off-road product, customers should test and recalibrate all safety sensors to ensure proper functionality. Do not rely on any safety sensor functionality until this verification is complete.

RCI Offroad bumpers with receiver hitches are not load rated. Using a receiver hitch for towing or other heavy-duty tasks is not recommended unless explicitly stated by the manufacturer. The bumper and receiver hitch are intended for off-road recovery use and not designed for sustained towing or load-bearing applications. Any misuse, such as towing or overloading, may result in bumper failure, vehicle damage, or personal injury. RCI is not responsible for any damages or injuries resulting from the use of the bumper with a receiver hitch beyond its intended purpose.

If an RCI product is purchased by a third party, such as a dealer, wholesaler, or installer, it is the third party's responsibility to inform the end customer of this disclaimer.

Installation Notes

Installation Notes:

RH refers to the passenger side of the vehicle.

LH refers to the driver side of the vehicle.

Always use the proper torque specifications.

If applicable to this installation, torque specifications will be listed throughout the document.

Please read all of these instructions and familiarize yourself with the complete process **BEFORE** you begin.

General Safety:

Park your car in a safe, well lit, level area.

Shut the engine off and remove the key from the ignition switch.

Make sure any remote start devices are properly disabled.

ALWAYS wear safety glasses.

Make sure the parking brake is applied until the vehicle is safely lifted and supported.

Whether lifting a vehicle using an automotive lift or a hydraulic jack, utilize the factory specified lift points.

Lifting a vehicle in an incorrect location can cause damage to the suspension/running gear.

ALWAYS support the vehicle with properly rated jack stands.

ALWAYS read and follow all safety information and warnings for the equipment you are using.

Required Tools:

1/4", 3/8" & 1/2" Socket Sets & Ratchets

Floor Jack

Jack Stands

Combination Wrench Set

Plier Set

Torque Wrenches

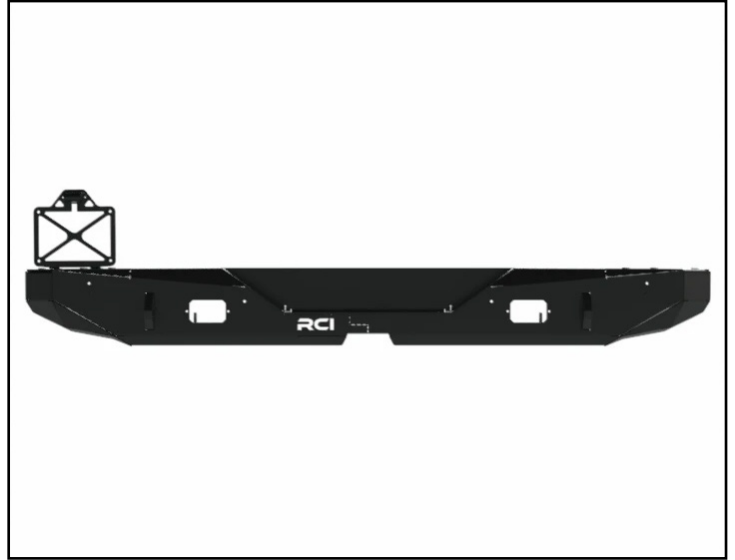
Installation Overview:

Before installation, remove all components and hardware from their packaging and verify that all the components are present.

Section 1: Removing the Stock Components

Step #1

Remove all components and hardware from their packaging and verify that all the components are present.



Step #2 T30 Torx Socket & Ratchet

Turn the fastener (arrow) counter clockwise to unlock the rear camera cover, then remove it from the vehicle and set it aside.

Remove the lug nuts, then remove the spare tire from the vehicle.



Section 1: Removing the Stock Components

Step #3

Disconnect the wiring harness (highlighted in **RED**) for the license plate lighting and parking sensors (if equipped).



Step #4 16mm Socket & Ratchet

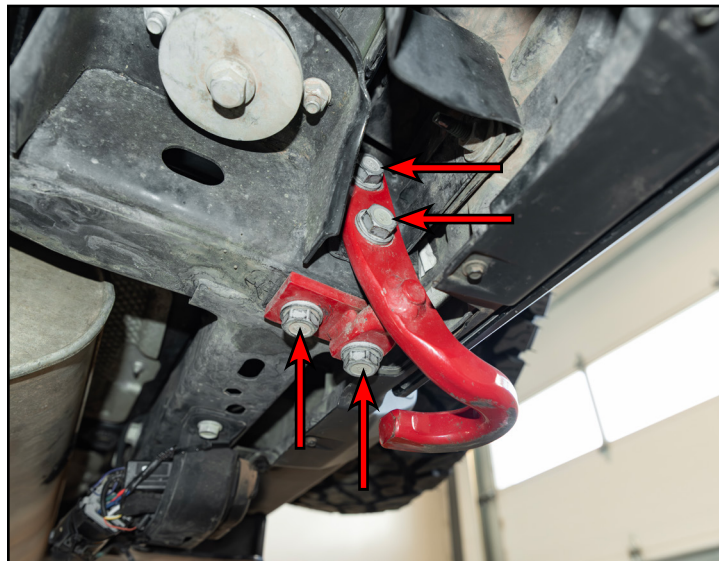
Remove the bolts (circled in **RED**) that secure the LH rear bracket to the frame and rear bumper, then remove it from the vehicle.



Section 1: Removing the Stock Components

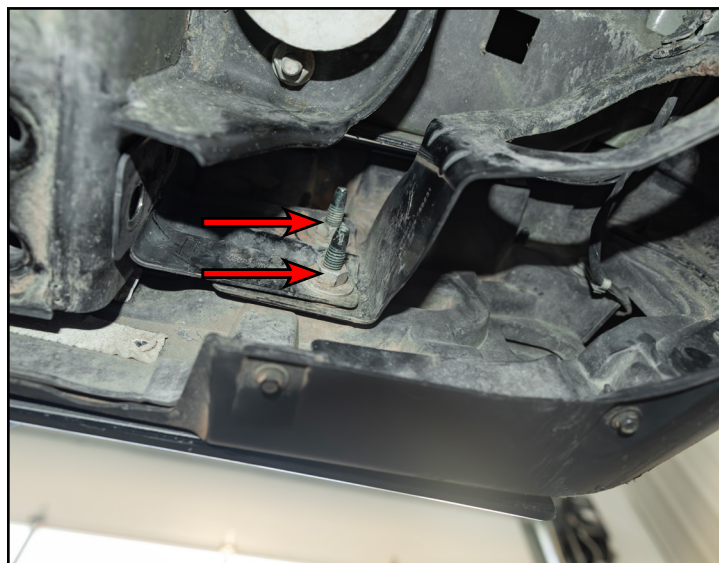
Step #5 | 21mm Socket & Ratchet

Remove the bolts (arrows) that secure the LH rear bumper and rear recovery point to the rear frame, then set the bolts aside.



Step #6 | 16mm Socket & Ratchet

Remove the nuts (arrows) that secure the LH inner bracket to the rear bumper.



Section 1: Removing the Stock Components

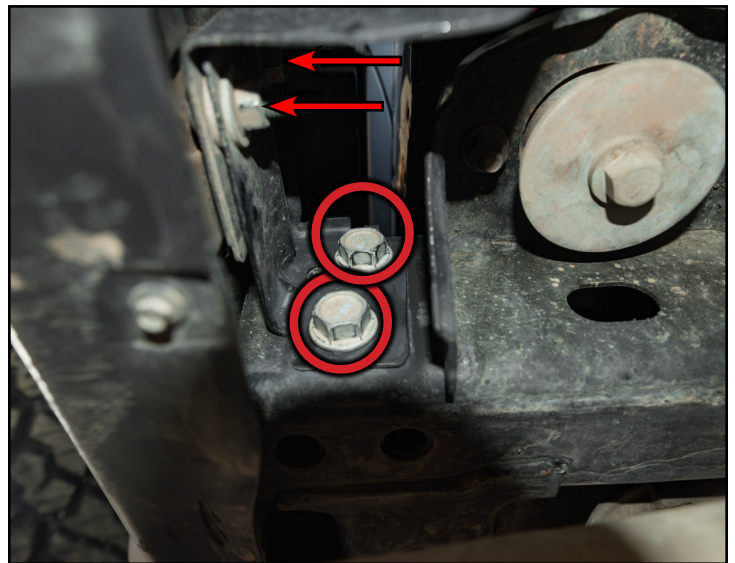
Step #7 16mm Socket & Ratchet

Remove the bolts (circled in **RED**) that secure the RH rear bracket to the frame and rear bumper, then remove it from the vehicle.



Step #8 16mm, 21mm Sockets & Ratchet

Remove the bolts (circled in **RED**) that secure the RH rear bumper, then loosen the nuts (arrows) that secure the bracket to the frame and bumper.



Section 1: Removing the Stock Components

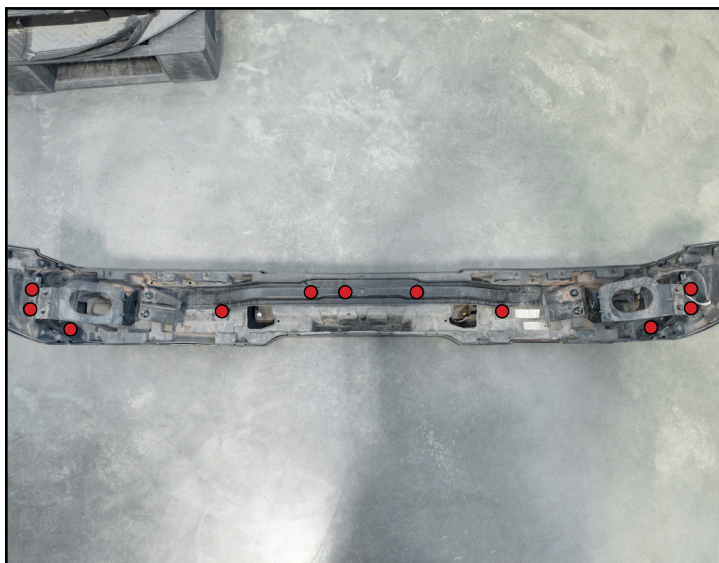
Step #9

Pull the bumper rearward to remove the bumper from the frame rails and safely set it aside.



Step #10 7mm Socket & Ratchet

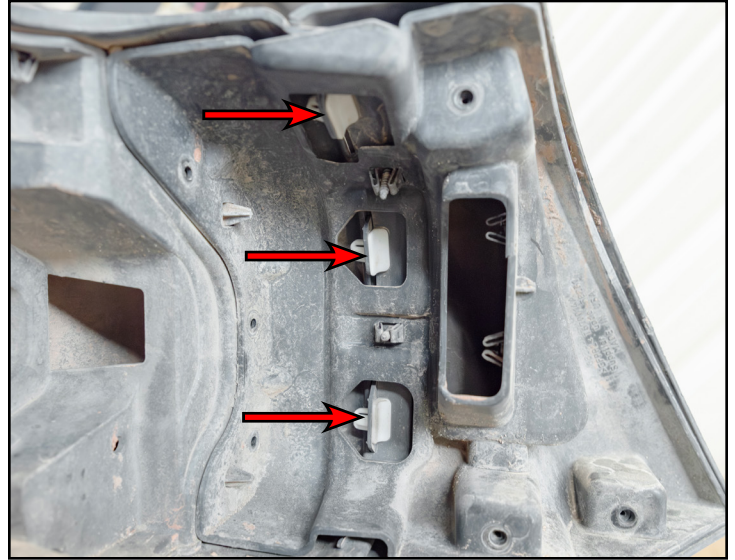
Remove the screws (RED circles) that secure the inner bumper brackets to the rear bumper, then remove the bracket.



Section 1: Removing the Stock Components

Step #11 Flat Blade Screwdriver

Depress the tabs (arrows) to release the LH and RH outer plastic covers, then remove the covers.



Step #12 7mm Socket & Ratchet

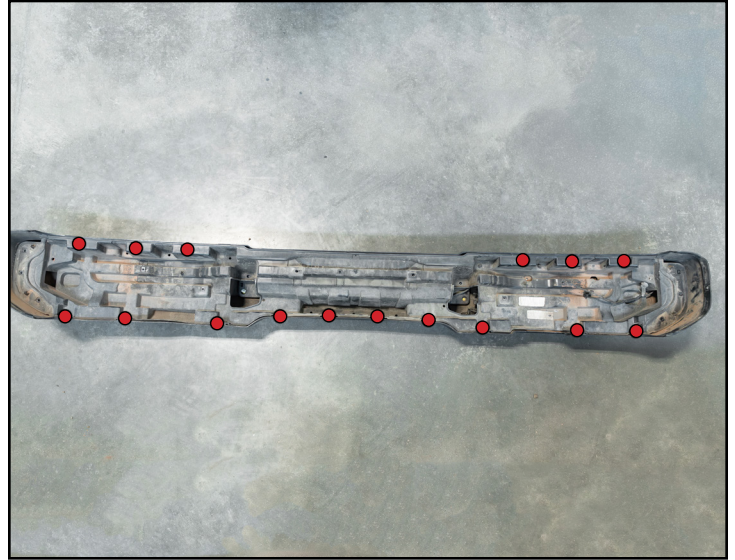
Remove the screws (circled in **RED**) that secure the inner rear bumper portion to the outer bumper portion at both corners.



Section 1: Removing the Stock Components

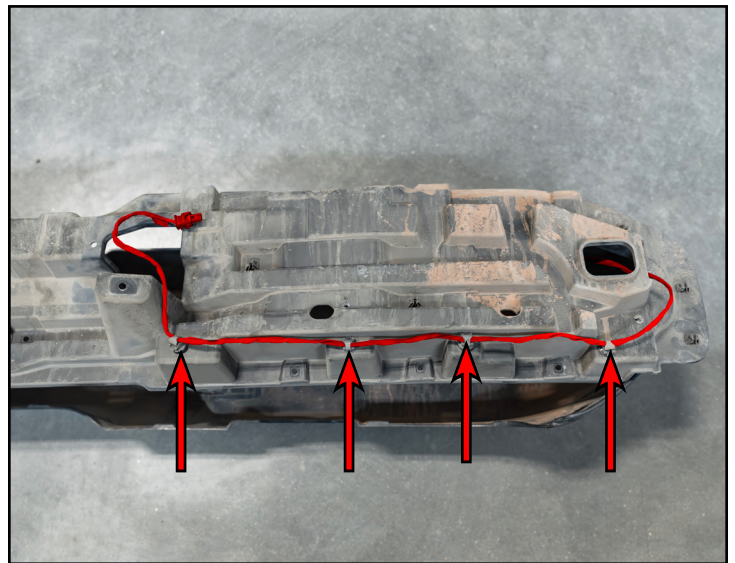
Step #13 | 7mm Socket & Ratchet

Remove the remaining screws (RED circles) that secure the inner bumper to the outer bumper, then remove the inner bumper and flip it over to the opposite side.



Step #14 | Panel Clip Tool

Free the clips (arrows) that secure the wiring harness (highlighted in RED) for the license plate lighting and parking sensors (if equipped), then set it aside.



Section 2: Installing the New Rear Bumper

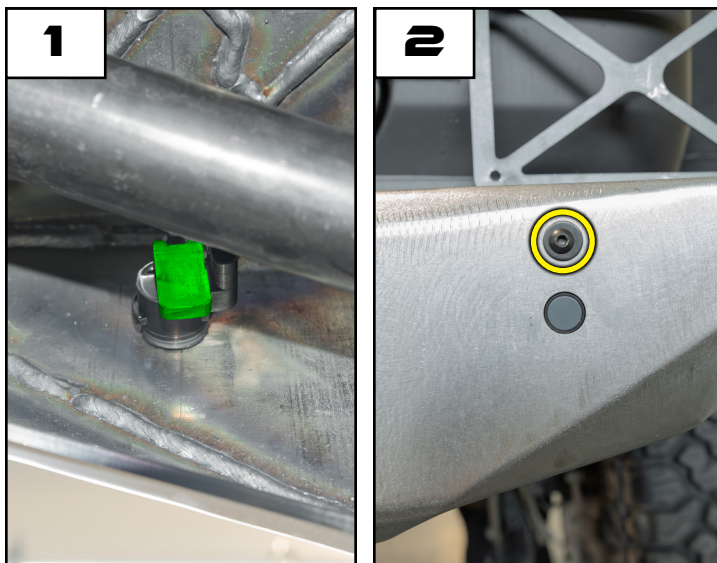
Step #1

Prepare the RH lower mounting plate by installing the provided M10 speed clips (highlighted in **GREEN**) onto the mounting plates as shown.



Step #2 4mm Hex (Allen)

If equipped: Install the parking sensors into their mounting locations, then install the provided sensor brackets (highlighted in **GREEN** in **photo #1**) and secure the bracket using the provided 1/4" hardware (circled in **YELLOW** in **photo #2**).



Section 2: Installing the New Rear Bumper

Step #3

Install the assembled mounting bracket plate into the RH frame rail and align the mounting locations as shown.



Step #4

Reconnect the OEM wiring harness (highlighted in **GREEN**) for the license plate lighting.



Section 2: Installing the New Rear Bumper

Step #5

Parking sensor installations: Route the parking sensor harness.

Swing-out installations: Route the provided wiring extension harness (highlighted in **GREEN**) for the license plate lighting onto the rear bumper as shown.

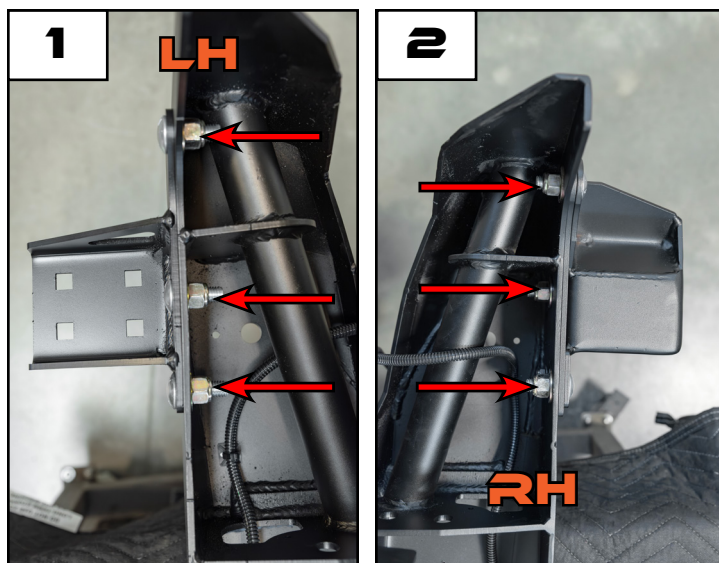
NOTE: If a spare tire carrier delete or swing-out are being installed with the new RCI rear bumper, will have different wiring harness options/routings.



Step #6 3/4" Wrench

For rear tire swing out installations only: Mount the LH & RH mounting brackets for the swing out and install the carriage bolts (arrows) secure them into place.

Optional: If a swing-out is not being installed, snap in plugs (arrows in inset photo) are provided to cover the mounting locations for the swing-out brackets in the rear bumper.



Section 2: Installing the New Rear Bumper

Step #7 | 4mm Hex (Allen), 7/16" Socket & Ratchet

Install the license plate bracket onto the LH rear bumper and secure it using the provided 1/4" hardware (circled in **YELLOW**).



Step #8 | 3mm Hex (Allen), 3/8" Socket & Ratchet

Route the license plate light wiring through the slot in the bracket, then install the provided license plate light onto the license plate bracket and secure it in place with the provided hardware (arrows).



Section 2: Installing the New Rear Bumper

Step #9 | Floor Jack & Jack Stands

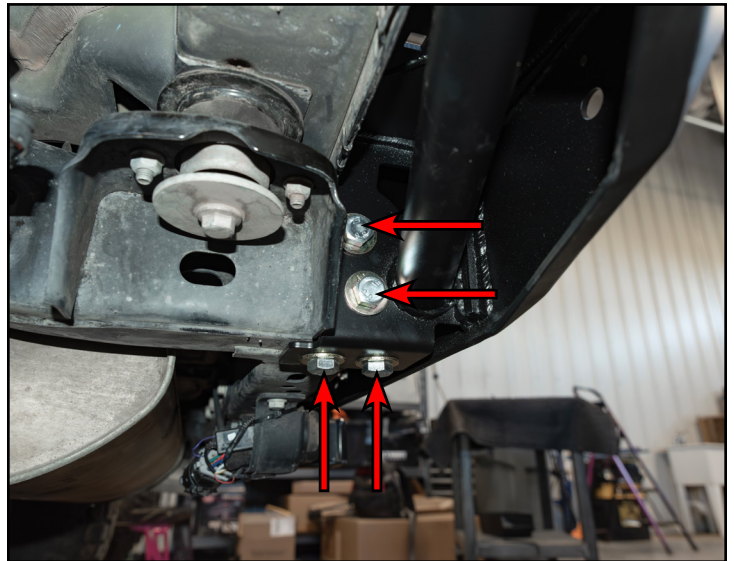
Lift the rear bumper into place and slide the bumper rearward, and align the holes for the mounting locations on the bumper with the frame.

Tech tip: Having a friend to assist, along with using a floor jack and jack stands will make this installation easier.



Step #10 | 22mm Socket & Ratchet

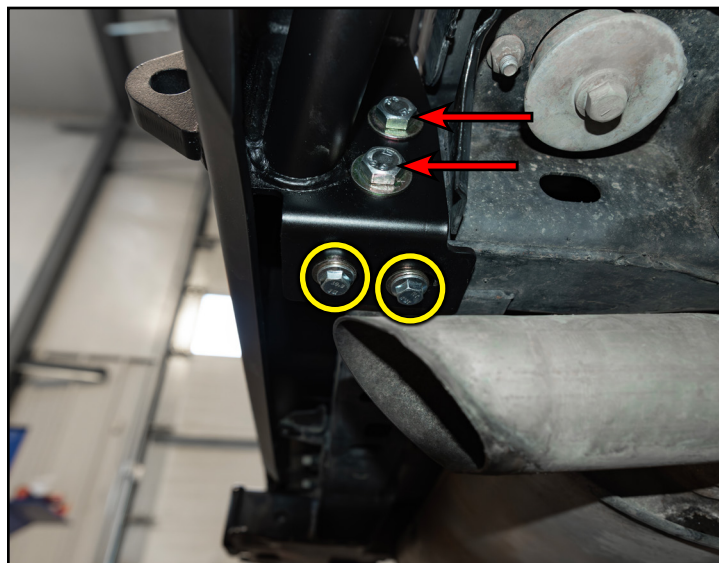
Loosely install the provided M14 bolts (arrows) to secure the LH rear bumper mounting locations to the vehicle.



Section 2: Installing the New Rear Bumper

Step #11 | 15mm, 22mm Sockets & Ratchet

Loosely install the provided M14 bolts (arrows) into the upper mounting locations in the RH rear bumper, then loosely install the provided M10 hardware (circled in **YELLOW**) through the bottom of the RH rear bumper and into the speed clips on the mounting bracket previously installed.

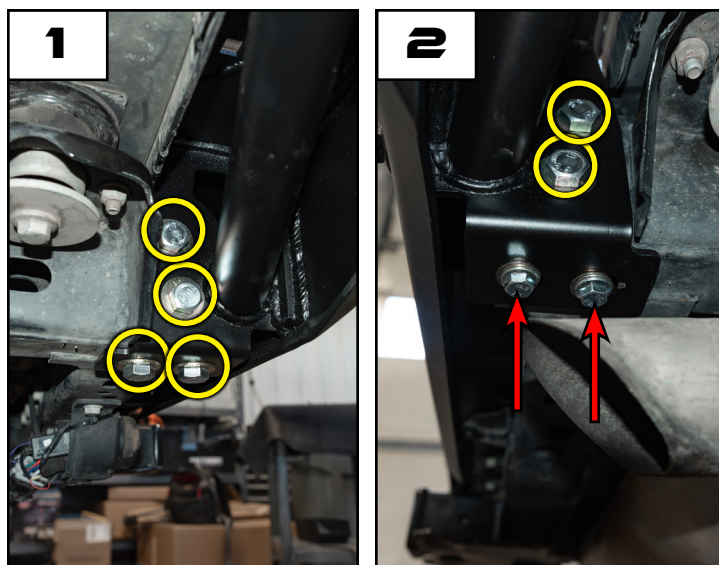


Step #12 | 15mm, 22mm Sockets & Torque Wrench

Adjust the rear bumper until desired fitment has been achieved, then fully tighten all of the hardware previously installed and torque the M14 bolts (circled in **YELLOW** in **photos #1 & 2**) to 66 Ft-lbs (90 Nm).

Fully tighten the M10 bolts (arrows in **photo #2**).

Tech tip: Tighten the hardware starting with the bottom bolts, then the side bolts when torquing the hardware.



Section 2: Installing the New Rear Bumper

Step #13

Connect the wiring harness for the provided license plate light to the OEM wiring harness.



Step #14

For installations without parking sensors only: If parking sensors aren't equipped, snap in plugs (circled in **YELLOW**) are provided to cover the mounting locations for the sensors in the rear bumper.

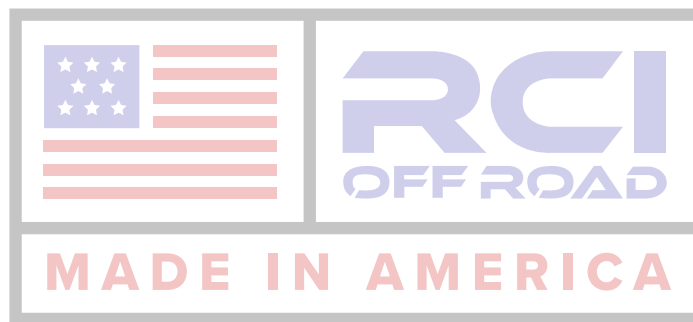


CONGRATULATIONS, YOUR INSTALLATION IS COMPLETE!

ENJOY YOUR NEW RCI PROTECTION!



**Share your new install with us on social media!
We love seeing our products in the wild!**



Follow us on social media:
[instagram.com/rcioffroad/#](https://www.instagram.com/rcioffroad/)
[facebook.com/RCIOffroad](https://www.facebook.com/RCIOffroad)
[youtube.com/@RCIOFFROAD](https://www.youtube.com/@RCIOFFROAD)

Contact:
1.970.797.3089
SALES@RCIOFFROAD.COM
6701 N. FRANKLIN AVE. LOVELAND, CO 80538

These instructions are provided as a courtesy by RCI Offroad

Disclaimer: The products sold by RCI Metalworks are intended for off-road use only, should not be modified, and are for use only on the vehicle(s) specifically stated. RCI Metalworks makes no warranties express or implied, including of fitness for a particular purpose or merchantability. RCI Metalworks will not be liable for any damages arising out of the use or misuse of its products. It is the customers' responsibility to ensure the products are safely and properly attached to the vehicle, and all products should be installed by trained professionals. We strive to maintain extremely high-quality standards; however, all RCI Metalworks products are individually handcrafted, may vary slightly, and may contain minor imperfections. Due to the nature of raw aluminum, the material may have minor scratches and other blemishes caused by the manufacturing process, especially on the back side of product. RCI Metalworks is constantly seeking to improve its products and reserves the right to make changes to any product.