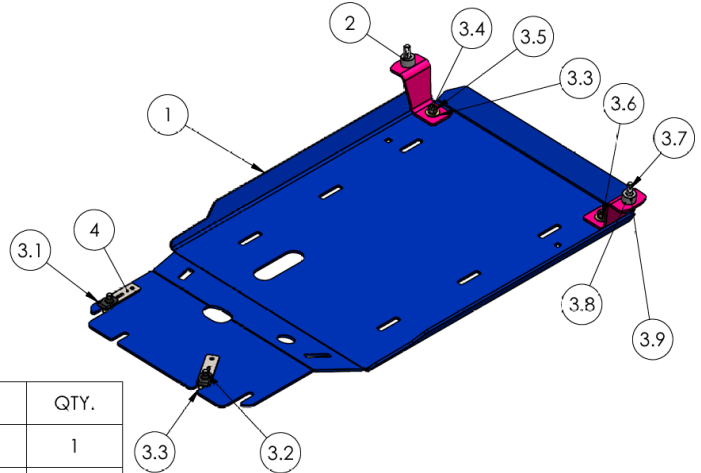


RCI SUBARU TRANSMISSION SKID INSTALLATION

GUIDE



ITEM NO.	PART NUMBER	DESCRIPTION	QTY.
1	SM-00860	SGP-1 Transmission Skid Plate	1
2	SM-00865	SGP-1 Transmission Bracket	2
3	HK-00147	KIT: Subaru Global Platform 1 Transmission Hardware Kit	1
3.1	HW-00023	5558B1M: M10-1.5 U-NUT .90MM-	2
3.2	HW-00021	M10-1.5 X 35MM HEX FLANGE BOLT	2
3.3	HW-00026	3/8 USS FLAT WASHER THRU HARD	4
3.4	HW-00052	3/8-16 X 1 CARRIAGE BOLT GR-5	2
3.5	HW-00030	3/8-16 FIN HEX NUT GR-5 ZINC	2
3.6	HW-00029	3/8 SPLIT LOCK WASHER ZINC	2
3.7	HW-00181	M10 x 1.25 mm x 45mm Bolt	2
3.8	HW-00044	7/16 USS FLAT WASHER ZNC	2
3.9	HW-00182	5/8" Aluminum Unthreaded Spacer	2
4	HW-00002	Mounting Plate #1 .135MS	2

UNLESS OTHERWISE SPECIFIED:	PROPRIETARY AND CONFIDENTIAL	DRAWN	NAME	DATE
DIMENSIONS ARE IN INCHES TOLERANCES: FRACTIONAL ± 0.010 ANGULAR: BEND ± 0.5 TWO PLACE DECIMAL: ± 0.015 THREE PLACE DECIMAL: ± 0.010	THE INFORMATION CONTAINED IN THIS DRAWING IS THE SOLE PROPERTY OF RCI Offroad. ANY REPRODUCTION IN PART OR AS A WHOLE WITHOUT THE WRITTEN PERMISSION OF RCI Offroad IS PROHIBITED.	KLD		9/04/24
		Export Date		
RCI OFFROAD				
TITLE: Subaru Global Platform 1 Trans Drawing - Install				
Item Number FG-00495	SKU: UNISUB-SPG1-TRANS			REV 1
DO NOT SCALE DRAWING		SCALE: 1:12 WEIGHT: 14.4 lb SHEET 1 OF 1		

****Use hand tools, impact wrenches may cause damage if over torqued.****

Preparation

- 1) Remove the bolts at the following locations.



Figure 1: Bottom View Bolts to Remove.

- 2) ***Engine Skid Owners*** If you have an engine skid installed.
 - a) Loosen the rear engine skid mounting points enough to slide the new transmission skid between the engine skid and the frame.

Installation

- 3) Begin by unpacking and removing all components and hardware. Please verify that all hardware and mounting components are present. Reference your original order invoice and verify all items are accounted for.
- 4) For RCI **engine skid owners**, skip to step 7.
- 5) Collect the MP1 plates and Speed Clips. Assemble MP1 Plate as shown.



Figure 2: Assembly of MP1 Plates and Speed Clips.

- 6) Using one of the assembled MP1 plates, partially thread one M10 x 35mm bolt with a 7/16" washer into the speed clip. Insert it into the applicable slot(s).
 - a) For model years that require use of a hole place the MP1 plate without the bolt threaded in from above. See figures below.

Mounting Hole Compatibility			
Model	Year	Mounting Holes	
Outback	2020-2023	2	4
	2024		
	2025		
Crosstrek	2018-2024	2	4
Forester	2014-2018	2	3
	2019-2024	2	4
	2025+		

Table 1: Speed clip location based on model year.

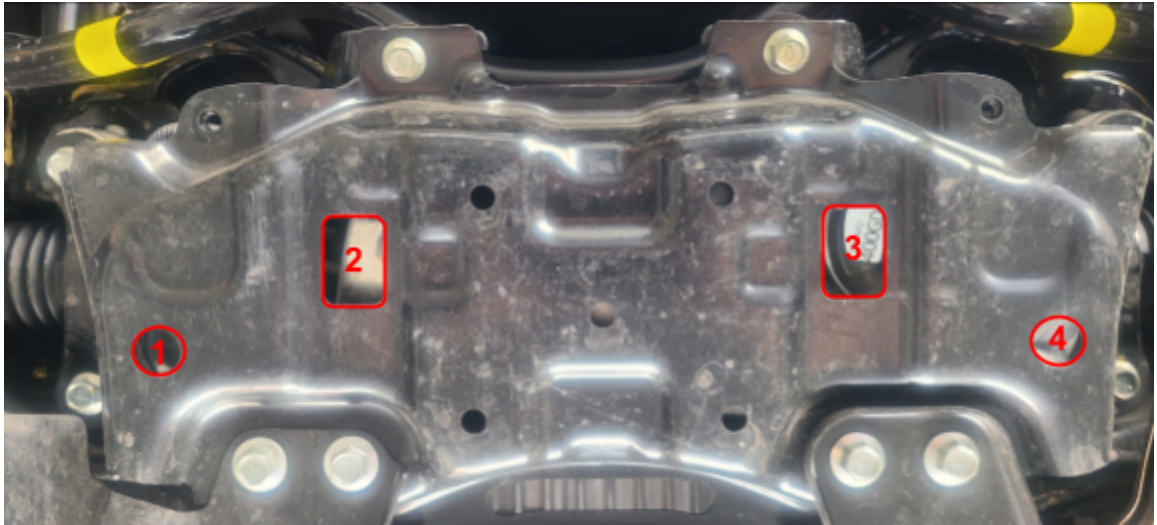


Figure 3: Speed clip location key for Table 1.



1: Partially thread bolt.

2: Insert assembly into slot.

3: Completed MP1 plate slot install.

Figure 4: Installation and assembly process for slot mounting.



1: Place MP1 behind frame.

2: Align MP1 speed clip hole with frame hole and thread in bolt.

3: Completed MP1 hole installation.

Figure 5: Installation and assembly process for hole mounting.

- 7) For Engine skid owners, loosen the rear mounting bolts. Pull down on the engine skid to create a gap.



Figure 6: Engine Skid Spacing Compatibility.

- 8) Slot the skid plate front end in first and hand tighten front mounting bolts.
 - a) Slot in between frame and engine skid if present.

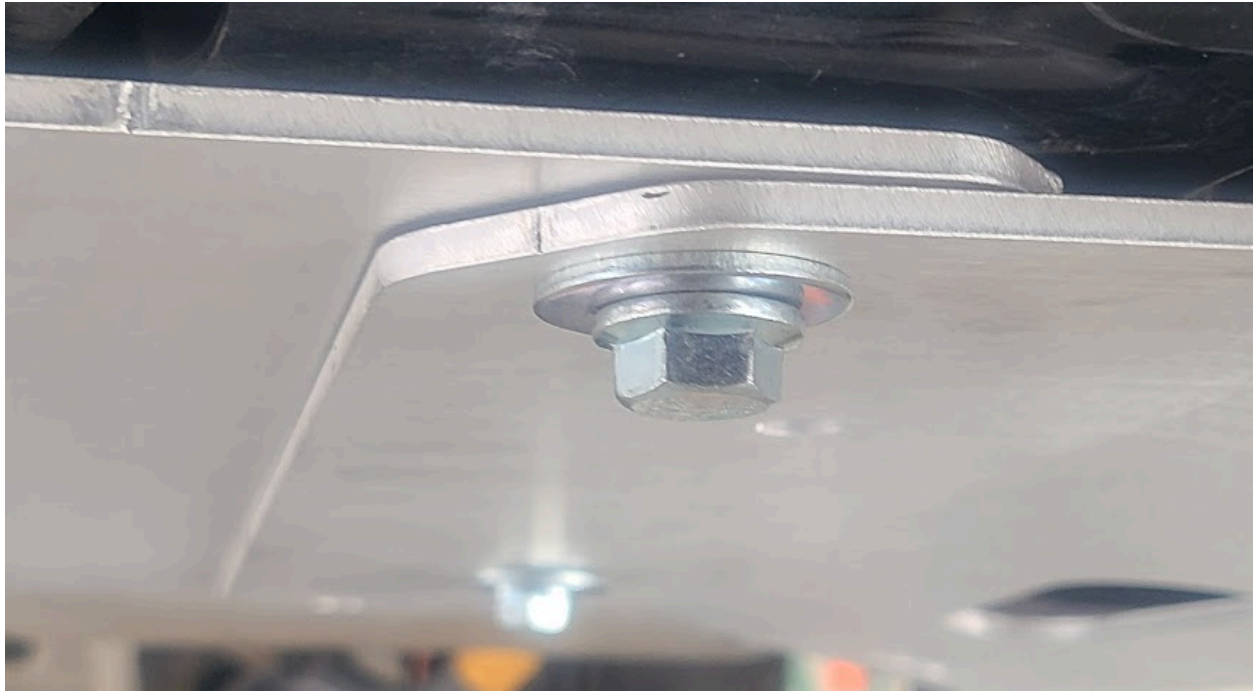
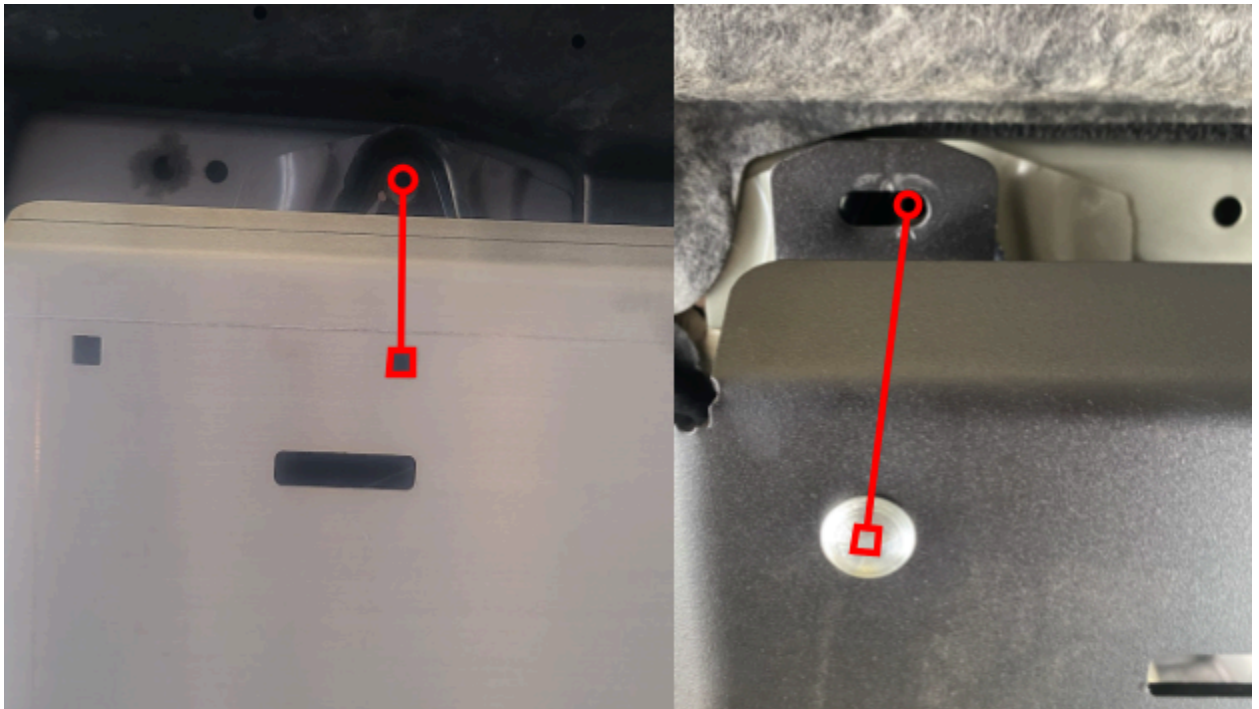


Figure 7: Transmission Skid Front Installation.

- 9) Moving towards the rear of the skid plate, determine which set of square holes align with your transmission mount. See below.



Forward Mounting Alignment

Rear Mounting Alignment

Figure 8: Alignment of square hole with transmission bolts.

- 10) Collect 2x rear brackets, 2x $\frac{3}{8}$ " nuts, 2x $\frac{3}{8}$ " split washers, 2x $\frac{3}{8}$ " washers, and 2x $\frac{3}{8}$ " x 1" carriage bolts. Bolt the brackets into the holes chosen in the previous step and hand tighten.

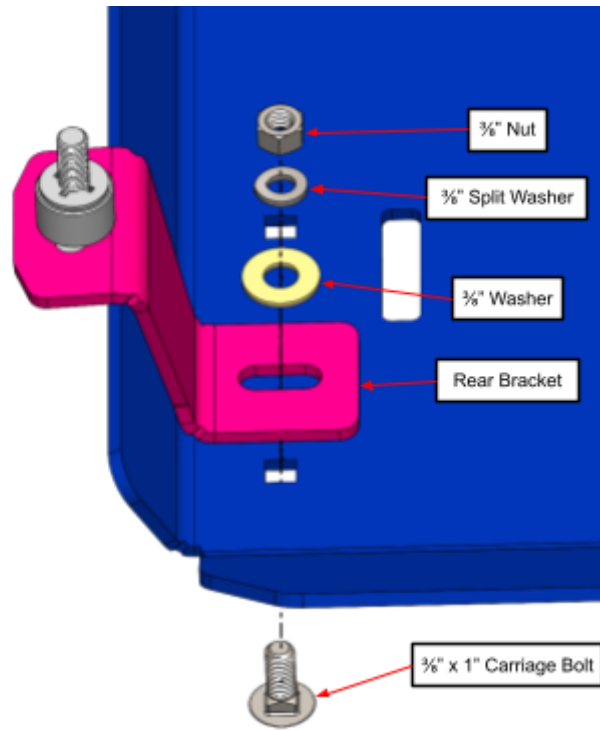


Figure 10: Rear bracket hardware installation.

- 11) Collect 2x $\frac{5}{8}$ " tall spacers, 2x $\frac{7}{16}$ " washer, and 2x M10 1.25 x 45mm bolts.
Install the upper hardware onto the bracket as shown. Adjust the brackets to align with the holes of the bolts removed in the preparation phase. Hand thread the bolts in.

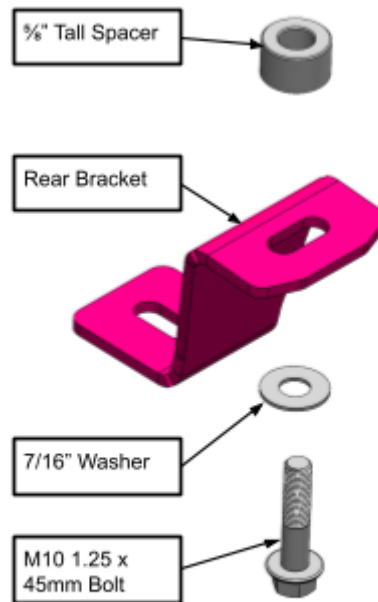


Figure 9: Rear bracket pre-install assembly.

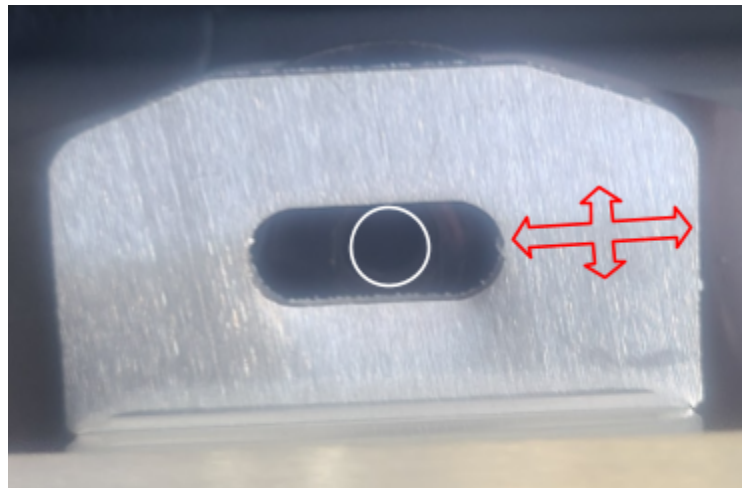


Figure 11: Alignment of bracket slot with frame holes.

12) Adjust skid position to desired position and tighten all hardware.

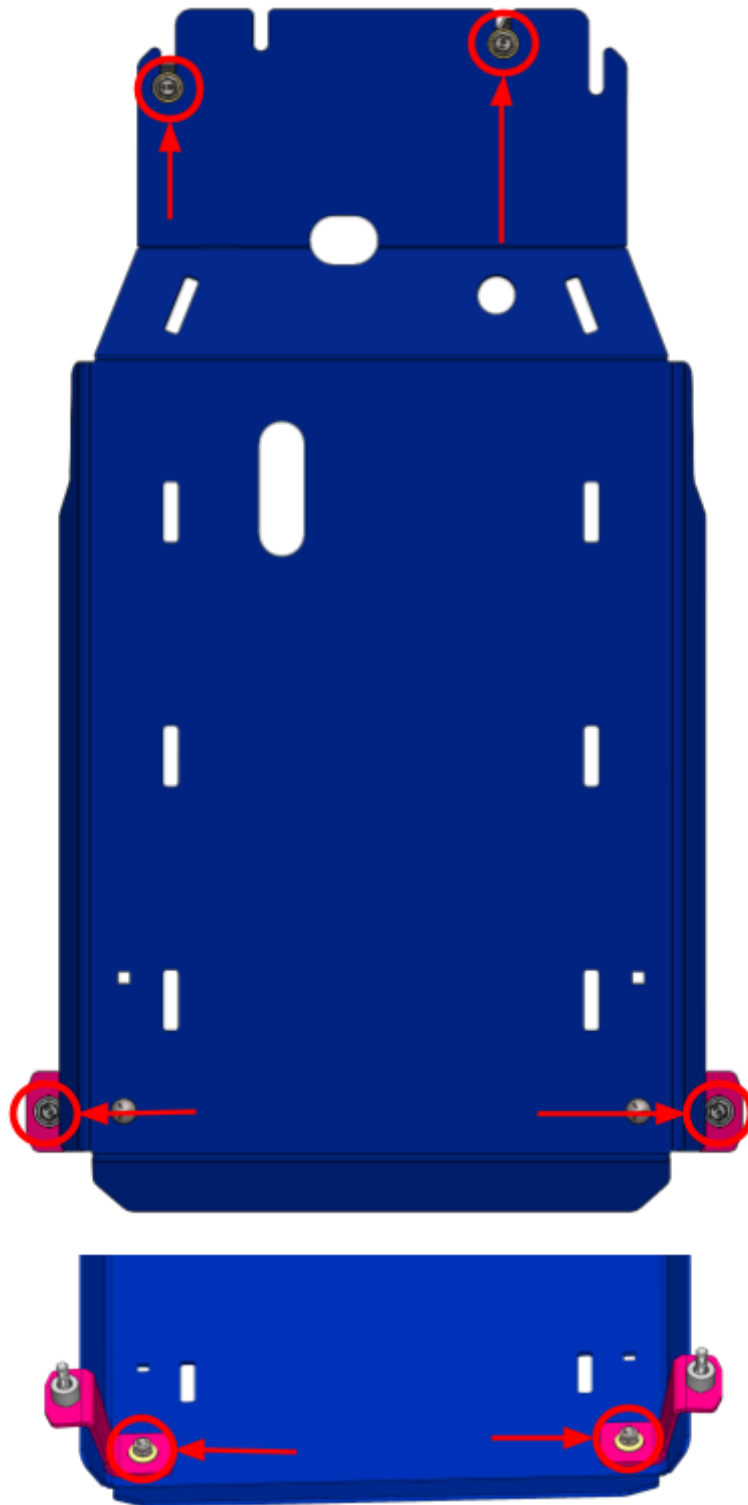


Figure 12: Final Torque of All Hardware.

Enjoy your new RCI protection!



Share your new install with us on social media!

We love seeing our products out in the wild!



www.rcimetalworks.com

sales@rcioffroad.com

970-797-3089

REV: 1 | 9/29/2022

Disclaimer: The products sold by RCI Metalworks are intended for off-road use only, should not be modified, and are for use only on the vehicle(s) specifically stated. RCI Metalworks makes no warranties express or implied, including of fitness for a particular purpose or merchantability. RCI Metalworks will not be liable for any damages arising out of the use or misuse of its products. It is the customers' responsibility to ensure the products are safely and properly attached to the vehicle, and all products should be installed by trained professionals. We strive to maintain extremely high quality standards; however, all RCI Metalworks products are individually handcrafted, may vary slightly, and may contain minor imperfections. Due to the nature of raw aluminum, the material may have minor scratches and other blemishes caused by the manufacturing process, especially on the back side of product. RCI Metalworks is constantly seeking to improve its products and reserves the right to make changes to any product.

