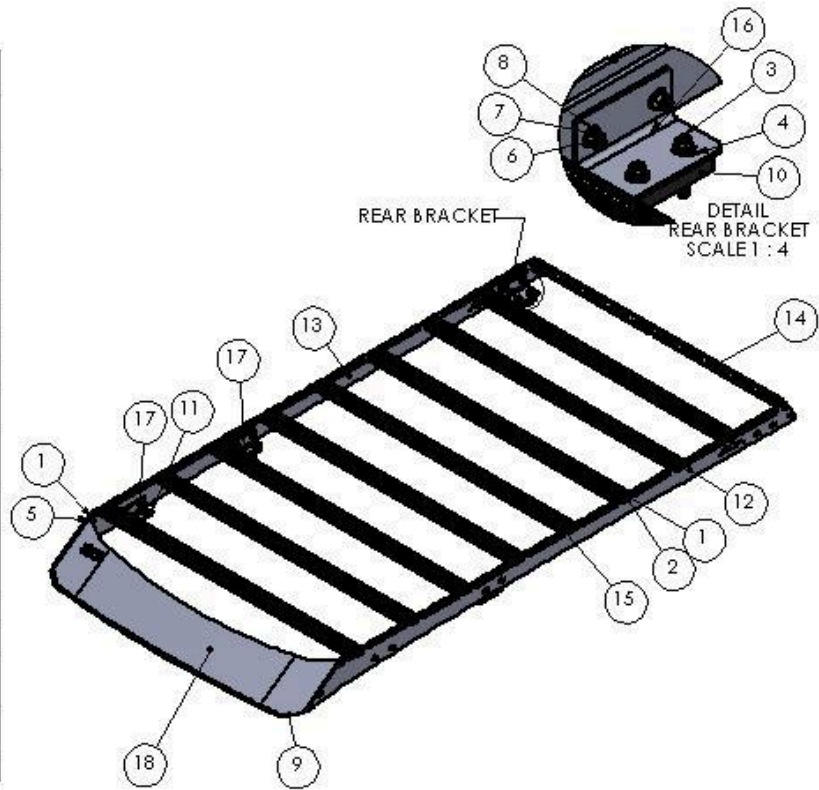


RCI 4Runner Full Roof Rack

ITEM NO.	PART NUMBER	QTY.
1	1/40 20 x 7/8" Button Head	40
2	1/4" Black Washer	48
3	M8 x 50mm Mounting Bolt	8
4	5/16" Rubber Washer	8
5	1/4"-20 Nyloc Nut	8
6	5/16 x 1" Carriage bolt	12
7	5/16"- Nyloc Nut	12
8	5/16" Washer	12
9	Roof Rack Weather Strip	1
10	Rubber Block	4
11	Adhesive Rubber Strip	2
12	Driver Side Panel	1
13	Passenger Side Panel	1
14	Rear Fairing	1
15	Aluminum T-Slot R.1	8
16	Rear Mount Bracket	2
17	Front/ Mid Mount Bracket	4
18	RCI Front wind fairing	1



**Use hand tools, impact wrenches may cause damage if over torqued.

**** We have been updating our mounting brackets. If you received different mounting brackets with your rack please reference the Roof Rack Uni-Foot Mount Update install guide for the mounting bracket installation**

1. Remove the factory roof rack by removing the 8-M8x50mm factory bolts.
2. On the ground, lay out the 47" Aluminum T-Slot cross bars (15) and the driver (12) / passenger (13) side panels with the mountains facing the correct direction.

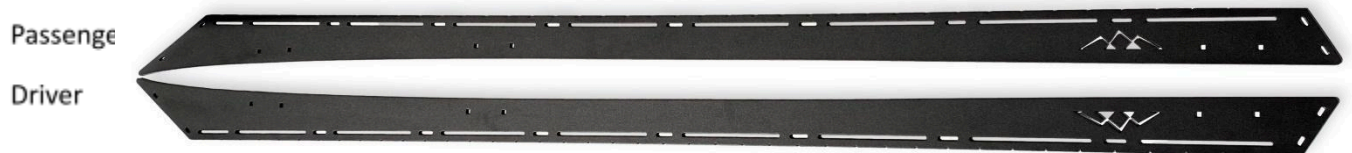


Figure 1: Passenger and Driver Side Panels

3. Install the front and middle mounting brackets (17) on to the side panels using the 5/16" carriage bolt (6), 5/16" flat washer (8), and the 5/16" lock nut. (If desired a lock washer could be used in place of the lock nut). Note* the front and middle brackets are smaller than the rear.



4. Install the rear mounting brackets (16) on to the side panels using the 5/16" carriage bolt (6), 5/16" flat washer (8), and the 5/16" lock nut.

Figure 3: Rear mount bracket

5. On the ground, lay out the 47" T-Slot cross bars (15) and the driver (12) and passenger (13) side panels with the bottom flanges facing the middle. Orient the opening of the T-Slot facing upwards on your desired side of your 4Runner.



Figure 4: T-slot cross bars lay out

6. Install the front and rear T-Slot using 1/4-20 X 7/8" Black Button Heads (1) with 1/4" Black Washers (2). It recommended to have the T-Slot opening on the same side of the 4Runner on all cross bars to make it easier install accessories.



is
to

Figure 5: T-Slot placement

7. Install the remaining T-Slot cross bars (15) using 1/4-20 X 7/8" black button heads (1) with 1/4" black washers (2). It is recommended to install the remaining cross bars in the 1" slots to ensure equal spacing.

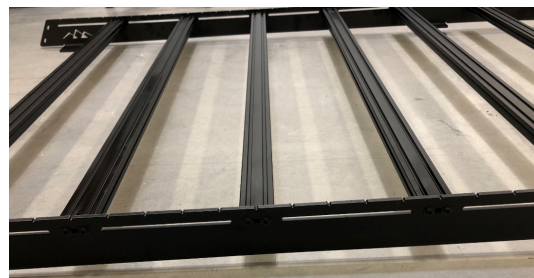


Figure 6: Final T-Slot install

8. Install front (18) and rear (14) fairings using 1/4-20 X 7/8" black button heads (1) with 1/4" black washers (2) and black nylon lock Nuts (5). When installing



the front fairing it is designed to bow towards the front of the truck. It is **IMPORTANT** to push the front fairing as far down as possible. The Fairing should be touching the roof of your truck (figure 9).



Figure 7: Rear fairing

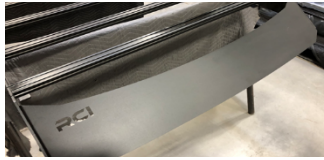


Figure 8: Front fairing



Figure 9: Front fairing location

9. Install front fairing weather strip (9) on the bottom edge of the front fairing. Note* A decent amount of pressure is required to seat the weather strip properly.



Figure 10: Front fairing weather strip install

10. Install adhesive rubber strips (11) onto the front flanges. Placed drilled rubber blocks (10) on top of your 4runner in the 4 factory mounting locations.

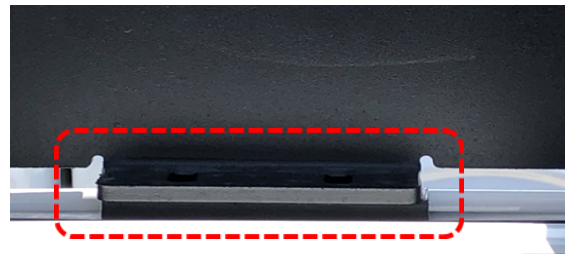
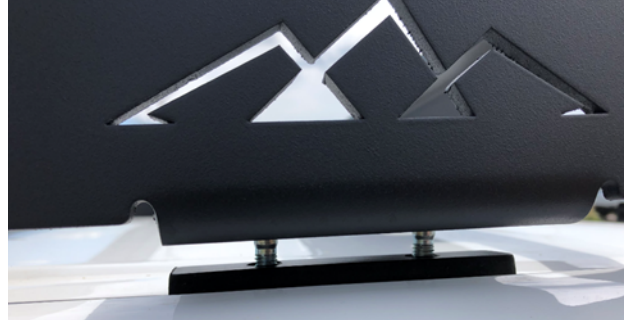
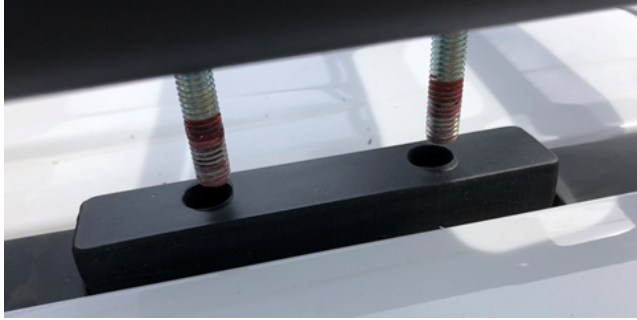


Figure 11: Adhesive rubber weather strip install

11. Lift assembled rack on top of your 4Runner and install using 5/16" Rubber washers (4) with 8-M8x50mm (3) bolts. Make sure that the M8-50mm bolts go through the drilled rubber block to ensure a watertight seal.
No silicone is needed to make watertight



12. Attach all your accessories via endless mounting options.
(Give us a call if you have any questions regarding optional accessories that our rack can accommodate)



Figure 14: Rear/ Middle attachment points



Enjoy the new roof rack!!!

Disclaimer: The products sold by RCI Metalworks are intended for off-road use only, should not be modified, and are for use only on the vehicle(s) specifically stated. RCI Metalworks makes no warranties express or implied, including of fitness for a particular purpose or merchantability. RCI Metalworks will not be liable for any damages arising out of the use or misuse of its products. It is the customers' responsibility to ensure the products are safely and properly attached to the vehicle, and all products should be installed by trained professionals. We strive to maintain extremely high quality standards; however, all RCI Metalworks products are individually handcrafted, may vary slightly, and may contain minor imperfections. Due to the nature of raw aluminum, the material may have minor scratches and other blemishes caused by the manufacturing process, especially on the back side of product. RCI Metalworks is constantly seeking to improve its products and reserves the right to make changes to any product.