

TIME FOR INSTALLATION

1-2 HOURS

RCI OFFROAD

EASY



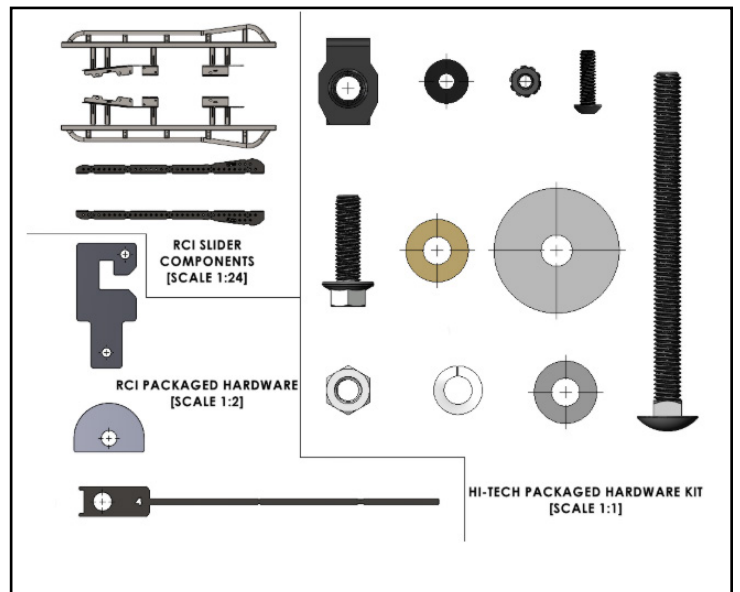
BASIC SKILLS
REQUIRED

24+ Ford Ranger Rock Slider Installation Guide

Contact RCI: SALES@RCIOFFROAD.COM
(970) 797-3089

Part Number	Description	Qty.
	24+ Ranger Slider LH	1
	24+ Ranger Slider RH	1
	Tread Plate LH	1
	Tread Plate RH	1
HK-00035	Kit: Tread Plate HW	11
HW-00017	1/4-20 x 7/8 Button Soc Cap Blk	20
HW-00031	1/4-20 Keps Nut 18-8 S.S. Blk	20
HW-00019	1/4 USS Flat Washer Thru Hard Blk	40
HK-00109	Kit: 24+ Ranger Slider HW	1
HW-00026	3/8 USS Flat Washer Thru Hard	16
HW-00021	M10-1.5 x 35mm Hex Flange Bolt	14
HW-00088	M10 x 40mm Hex Flange Bolt	2
HW-00023	M10-1.5 U-Nut .90	12
HW-00044	7/16 USS Flat Washer Zinc	4
HW-00045	7/16 Split Lock Washer Zinc	4
HW-00047	7/16-14 FIN Hex Nut GR-5 Zinc	4
HW-00049	7/16-14 x 5 1/2 Carriage Bolt	4
HW-00028	Full-Moon Spacer	4
HW-00022	1/2 USS Flat Washer Thru Hard	1
HW-00057	M12-1.75 x 40mm Hex Flange Bolt	1
HW-00113	.375 x 1 x 125 Nylon Spacer	1

*For tread plate installations only



Caution: Use hand tools, impact wrenches may cause damage if over torqued.

Read the entire notes and instructions before installation.

Installation Notes

Installation Notes:

RH refers to the passenger side of the vehicle.

LH refers to the driver side of the vehicle.

Always use the proper torque specifications.

If applicable to this installation, torque specifications will be listed throughout the document.

Please read all of these instructions and familiarize yourself with the complete process **BEFORE** you begin.

General Safety:

Park your car in a safe, well lit, level area.

Shut the engine off and remove the key from the ignition switch.

Make sure any remote start devices are properly disabled.

ALWAYS wear safety glasses.

Make sure the parking brake is applied until the vehicle is safely lifted and supported.

Whether lifting a vehicle using an automotive lift or a hydraulic jack, utilize the factory specified lift points.

Lifting a vehicle in an incorrect location can cause damage to the suspension/running gear.

ALWAYS support the vehicle with properly rated jack stands.

ALWAYS read and follow all safety information and warnings for the equipment you are using.

Required Tools:

1/4", 3/8" & 1/2" Socket Sets & Ratchets

Floor Jack

Jack Stands

Combination Wrench Set

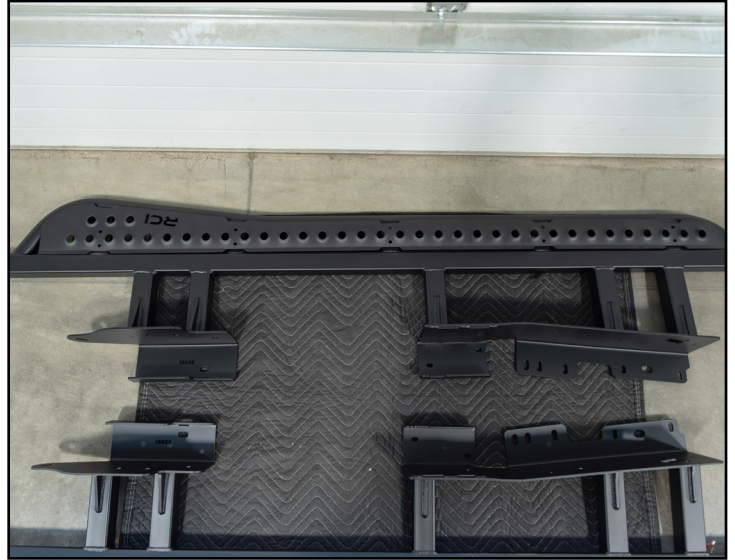
Plier Set

Torque Wrenches

Section 1: Removing the Stock Components

Step #1

Remove all the components and hardware from their packaging. Ensure that all of the components and hardware are present.

**Step #2** | **13mm Socket & Ratchet**

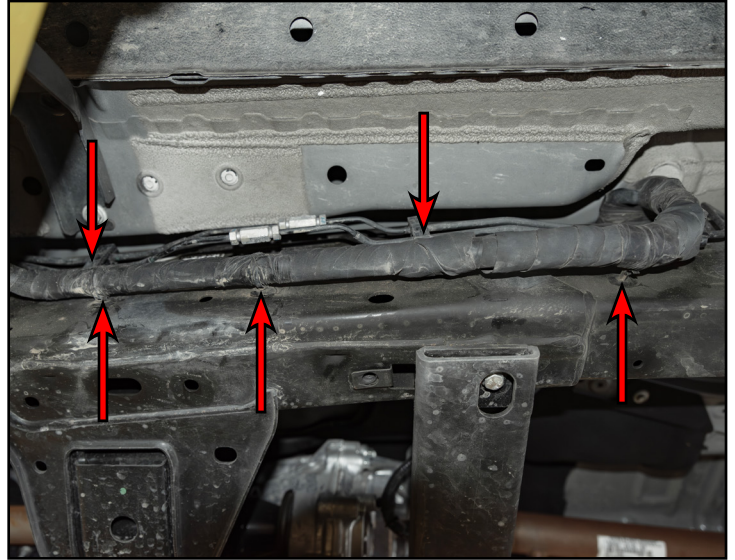
If equipped with OEM side steps and transfer case skid plate, remove the bolts that secure them to the vehicle.



Section 1: Removing the Stock Components

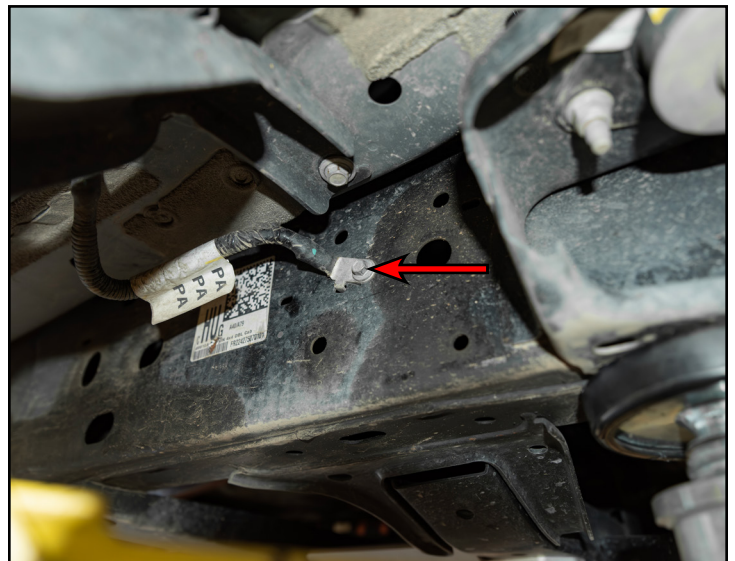
Step #3 Trim Removal Tool

Release the clips (arrows) that secure the wiring harness and brake lines to the LH frame rail.



Step #4 10mm Socket & Ratchet

Remove the bolt (arrow) that secure the ground wire to the RH frame rail.



Section 2: Installing the New Rock Sliders

Step #1 | 4mm Hex (Allen), 7/16 Socket & Ratchet

If you're installing RCI tread plates on your new sliders, install the tread plates onto the sliders and secure them with the 1/4" hardware (circled in **YELLOW**).



Step #2 | Floor Jack & Jack Stands

Lift the RH slider from underneath up to the frame on the RH side of the vehicle.

Tech tip: Having a friend to assist, along with using a floor jack and jack stands will make this installation easier.

CAUTION: Be careful when installing the slider not to pinch or damage any frame mounted wiring, lines or hoses.

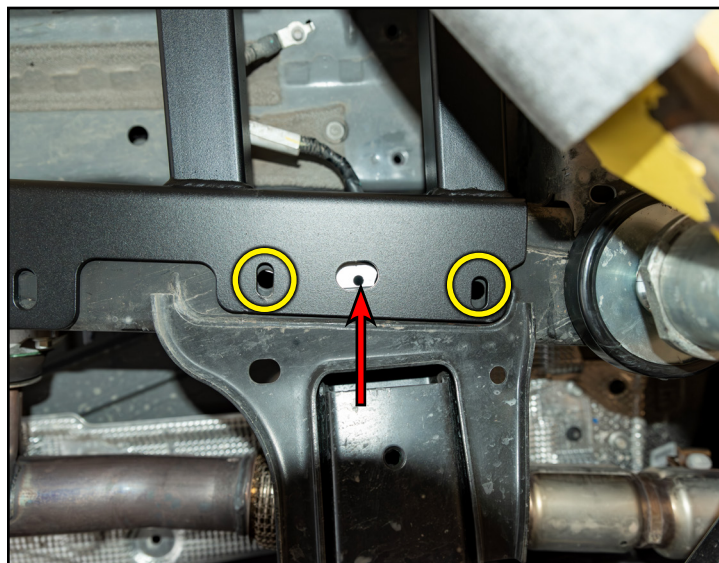


Section 2: Installing the New Rock Sliders

Step #3

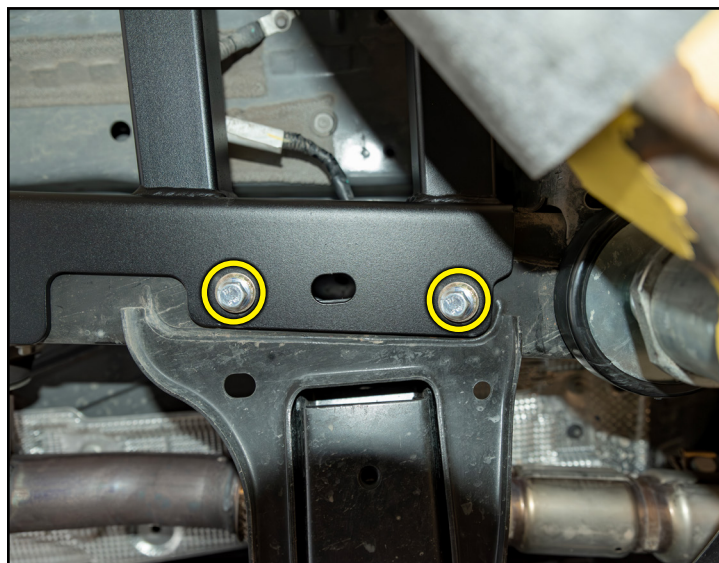
Align the RH frontmost bottom mounting locations (circled in **YELLOW**) of the RH slider frame plate with the OEM threaded holes in the LH frame rail.

Insert the provided MP2 brackets (as shown in inset photo) into the oval hole (arrow) then align the threaded holes with the mounting locations (circled in **YELLOW**) in the slider frame plate.



Step #4 15mm Socket & Ratchet

Install the provided M10 hardware (circled in **YELLOW**) into the threaded holes of the MP2 brackets previously installed.



Section 2: Installing the New Rock Sliders

Step #5 | 16mm Socket & Ratchet

Loosely thread the provided M12 hardware (arrow) into the threaded hole as shown.

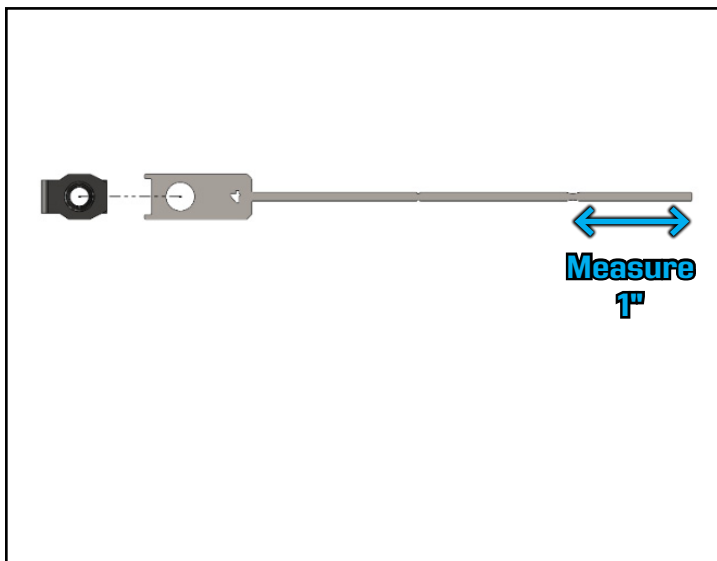
Note: this mounting location is utilized for the RCI transfer case skid plate installation, refer to the transfer case installation guide for further information.

If equipped with an RCI transfer case skid plate: reinstall the skid plate utilizing the OEM mounting locations after the both sliders has been fully installed.



Step #6 | Tape Measure & Paint Pen -OR- Marker

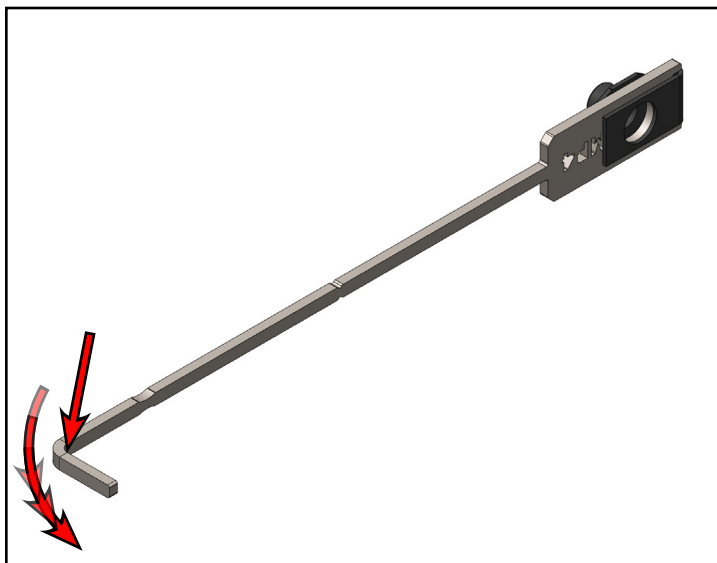
Prepare the LH front frame plate MP4 bracket by attaching a speed clip, then measure 1" from the end of the MP4 bracket and mark the MP4.



Section 1: Remove Stock

Step #7 | Locking Pliers -OR- Bench Vise

Bend the RH front frame plate MP4 bracket 90° at the mark (arrow) made previously as shown.



Step #8 | Locking Pliers, 15mm Socket & Ratchet

Install the prepared RH front frame plate MP4 assembly through the RH frame rail (arrow) and align it with the hole on the side of the front frame plate.

Install the provided full-moon washer, flat washer, M10 x 40mm bolt (circled in **YELLOW**), and loosely thread it into the aligned MP4 assembly.

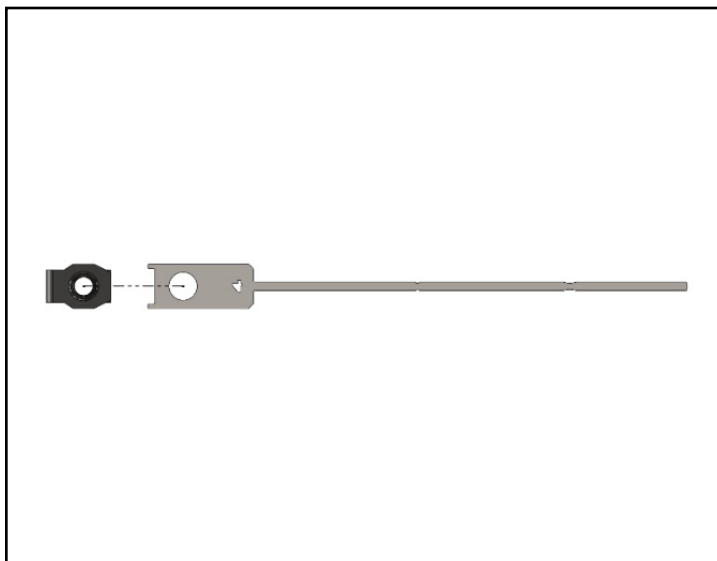
Tech tip: Using a pair of locking pliers attached to the end of the MP4 bracket will make aligning the speed clip with the hole in the frame and frame plate easier.



Section 2: Installing the New Rock Sliders

Step #9

Prepare the RH rearmost bottom facing MP4 bracket by attaching a provided speed clip onto the bracket.



Step #10 15mm Socket & Ratchet

Install the assembled RH rearmost lower facing MP4 bracket through the oval shaped hole in the RH frame rail (arrow) and align the threaded speed clip with the bottom facing hole (circled in **YELLOW**).

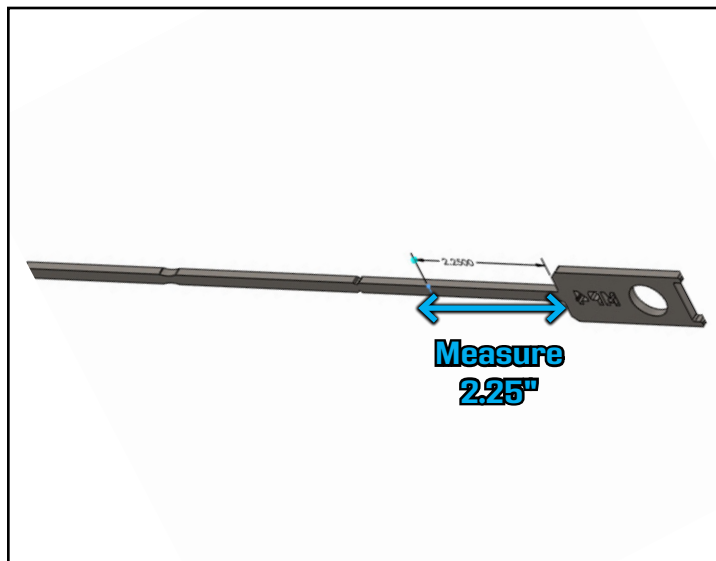
Once the threaded speed clip on the MP4 bracket is aligned with the mounting location, secure the MP4 with the provided M10 hardware (circled in **YELLOW**).



Section 2: Installing the New Rock Sliders

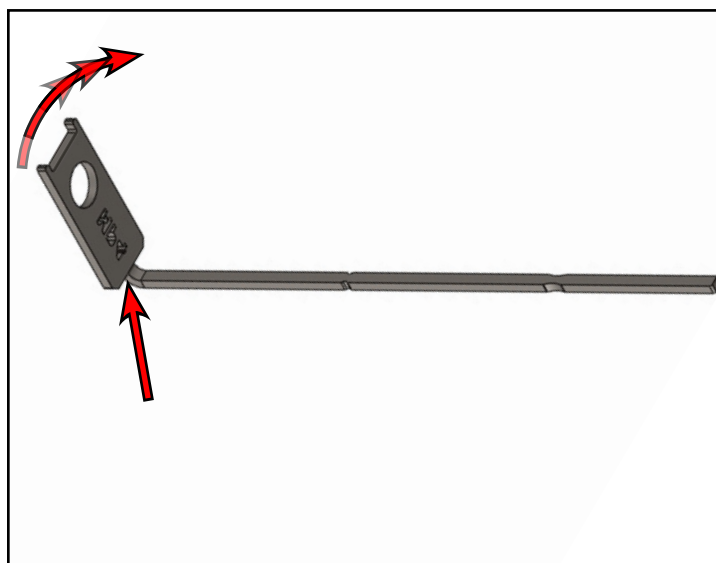
Step #11 | Tape Measure & Paint Pen -OR- Marker

Prepare the rearmost side facing MP4 bracket by measuring 2.25" from the base of the MP4 mounting plate and mark the bracket.



Step #12 | Locking Pliers -OR- Bench Vise

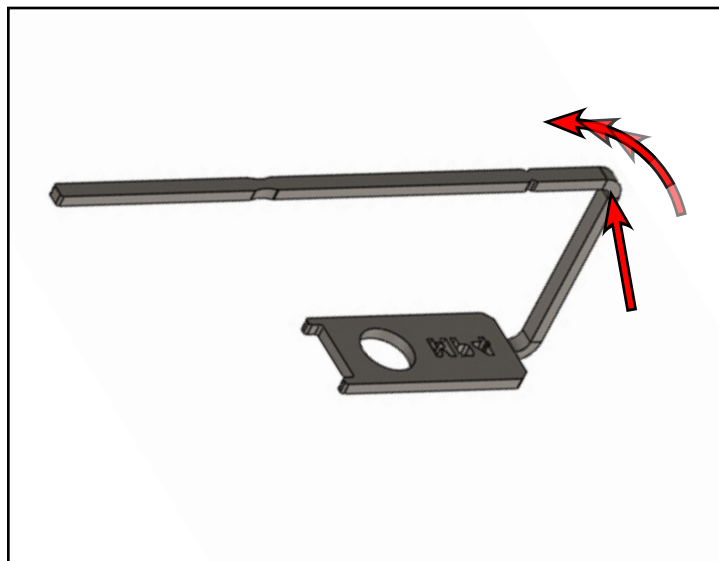
Bend the RH rearmost side facing MP4 bracket upward 90° at the base of the mounting plate (arrow) as shown.



Section 2: Installing the New Rock Sliders

Step #13 | Locking Pliers -OR- Bench Vise

Bend the RH rearmost side facing MP4 bracket at the mark (arrow) previously made, over the mounting plate of the bracket as shown.

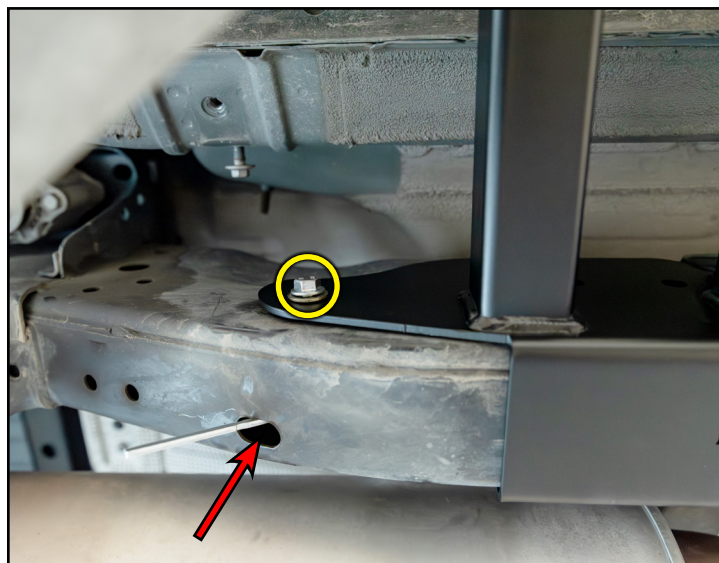


Step #14 | 15mm Socket & Ratchet

At the rear of the RH frame, slide the prepared MP4 assembly through the oval shaped hole (arrow) in the RH frame rail and align the threaded speed clip with the mounting location on the vertical surface of the RH rear frame plate.

Once aligned, secure the MP4 with the provided M10 hardware (circled in **YELLOW**).

Remove any excess MP4 bracket that extends below the frame rail.

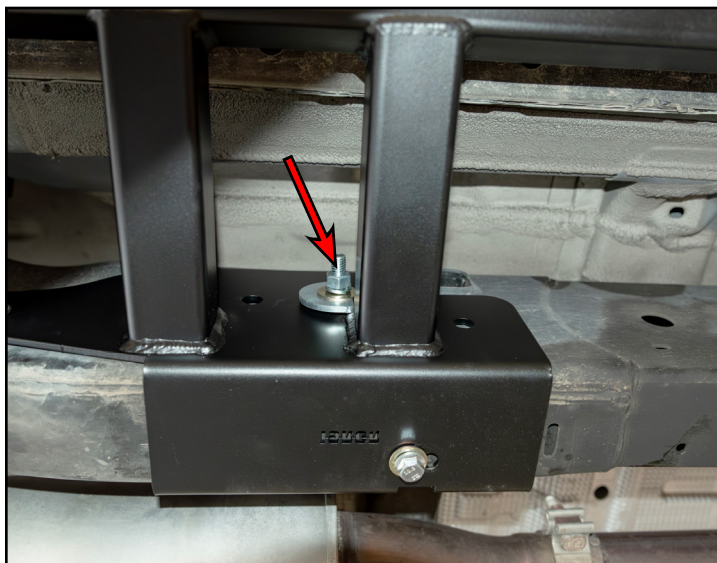


Section 2: Installing the New Rock Sliders

Step #15 9/16 Socket & Ratchet

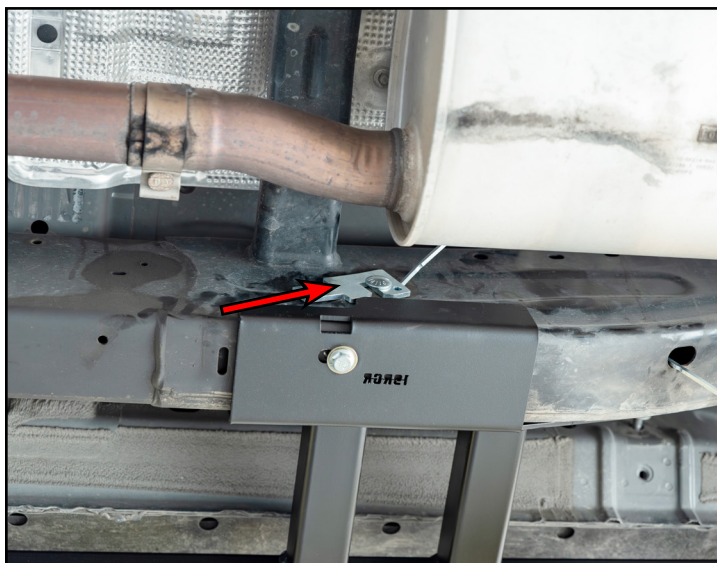
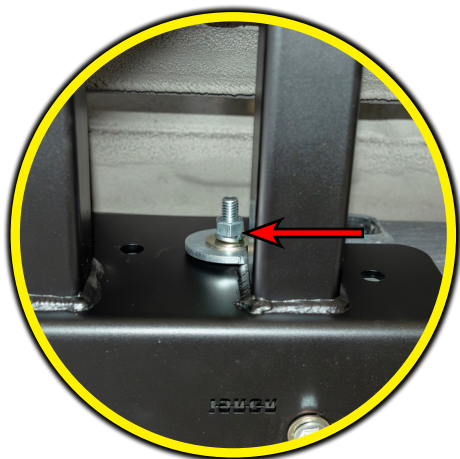
Install a half-moon washer, flat washer, split lock washer, and hex nut onto the 7/16" carriage bolt (arrow).

From the outside frame rail slide the carriage bolt assembly through the hole in the slider rear frame plate and vehicle frame rail.



Step #16 9/16 Socket & Ratchet

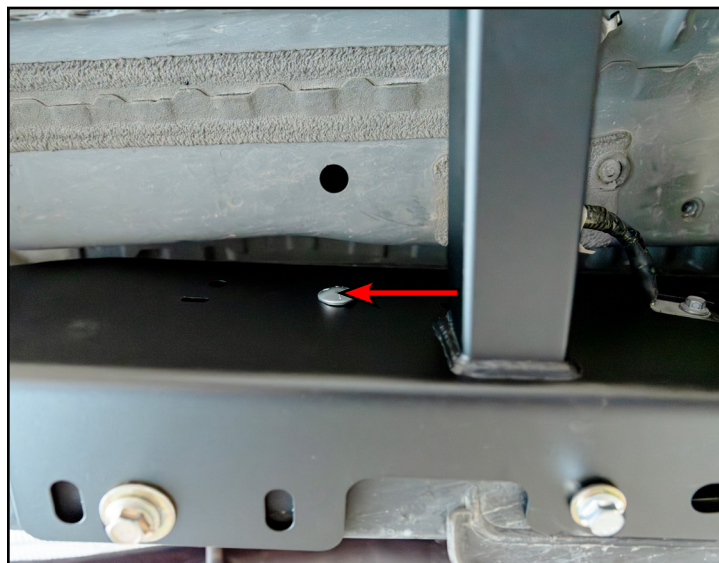
Hook a 7/16" carriage bolt plate (arrow) over the bolt head of the carriage bolt and tighten the nut (arrow in inset photo) until hand tight.



Section 2: Installing the New Rock Sliders

Step #17 | 9/16 Socket & Ratchet

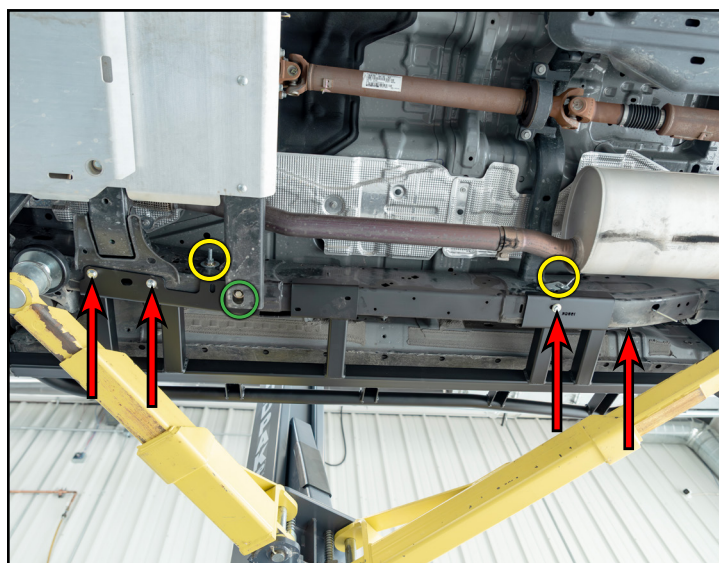
From outside the frame rail, slide a 7/16" carriage bolt (arrow) through the square hole in the RH front frame plate, then install the provided full-moon washer, flat washer, split-lock washer and nut (arrow in inset photo) onto the carriage bolt.



Step #18 | 15mm, 16mm, 9/16 Sockets & Torque Wrench

Fully tighten all of the hardware for the RH rock slider.

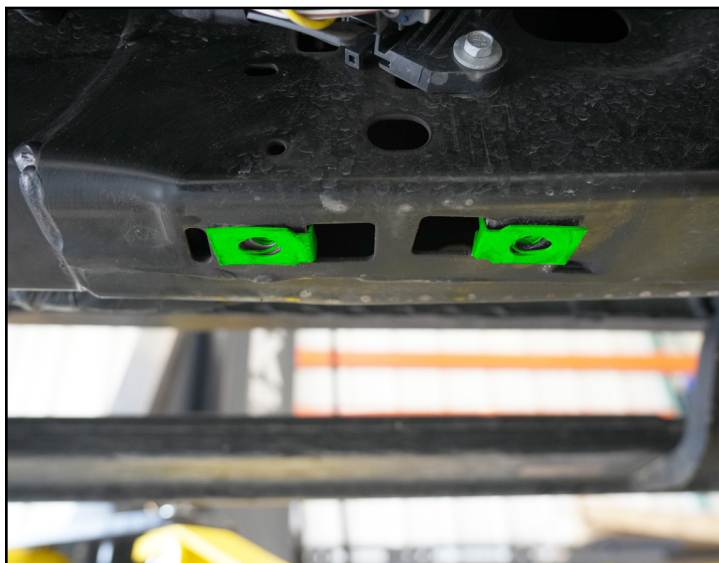
- Torque the M10 hardware to 50 Ft-lbs. (arrows)
- Torque the M12 hardware to xx Ft-lbs. (circled in **GREEN**)
- Torque the 7/16 hardware to 20 Ft-lbs. (circled in **YELLOW**)



Section 2: Installing the New Rock Sliders

Step #19

Install the provided speed clips (highlighted in **GREEN**) into the mounting locations on the LH frame rail for the OEM transfer case skid plate as shown.



Step #20 | Floor Jack & Jack Stands

Lift the LH slider from underneath up to the frame on the LH side of the vehicle.

Tech tip: Having a friend to assist, along with using a floor jack and jack stands will make this installation easier.

CAUTION: Be careful when installing the slider not to pinch or damage any frame mounted wiring, lines or hoses.

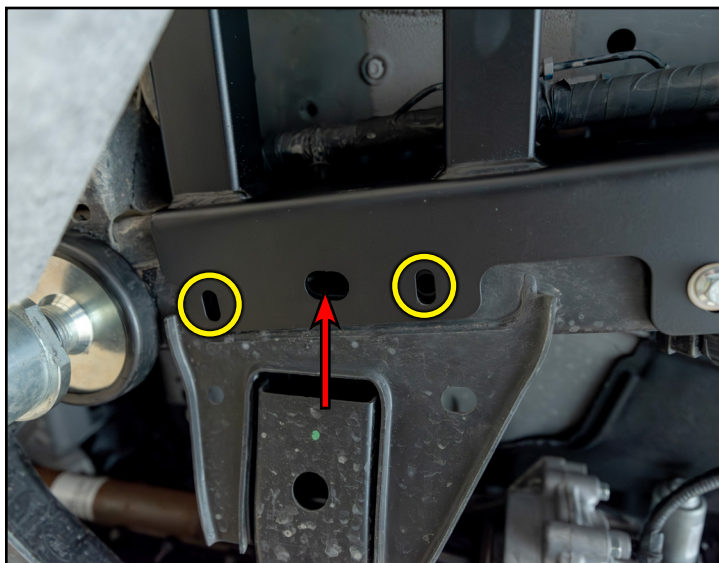


Section 2: Installing the New Rock Sliders

Step #21

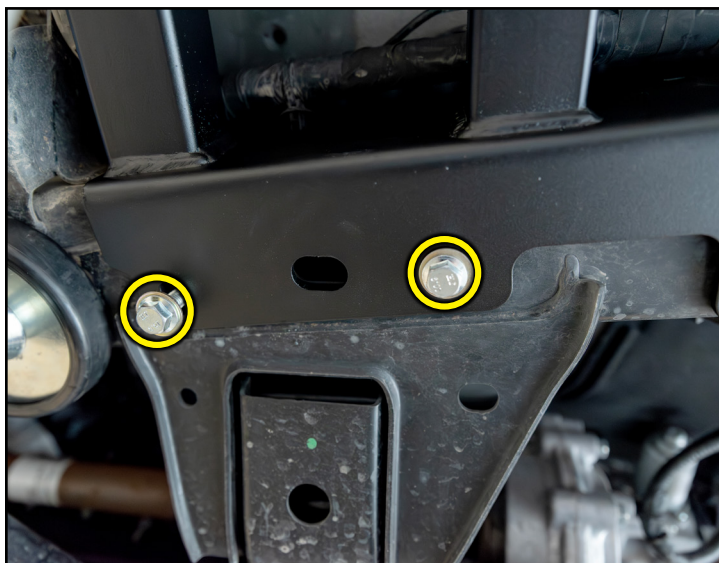
Align the LH frontmost bottom mounting locations (circled in **YELLOW**) of the LH slider frame plate with the OEM threaded holes in the LH frame rail.

Insert the provided MP2 brackets (as shown in inset photo) into the oval hole (arrow) then align the threaded holes with the mounting locations (circled in **YELLOW**) in the slider frame plate.



Step #22 15mm Socket & Ratchet

Install the provided M10 hardware (circled in **YELLOW**) into the threaded holes of the MP2 brackets previously installed.



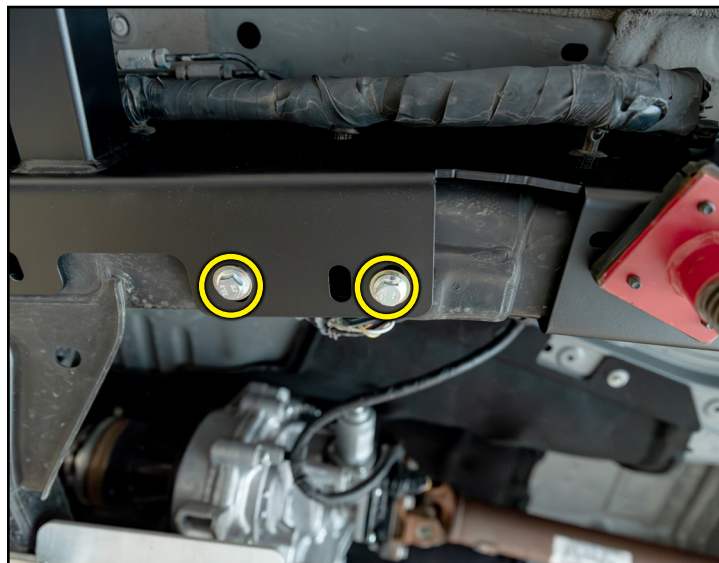
Section 2: Installing the New Rock Sliders

Step #23 | 15mm Socket & Ratchet

Install the M10 hardware (circled in **YELLOW**) loosely into the LH front frame plate mounting locations as shown.

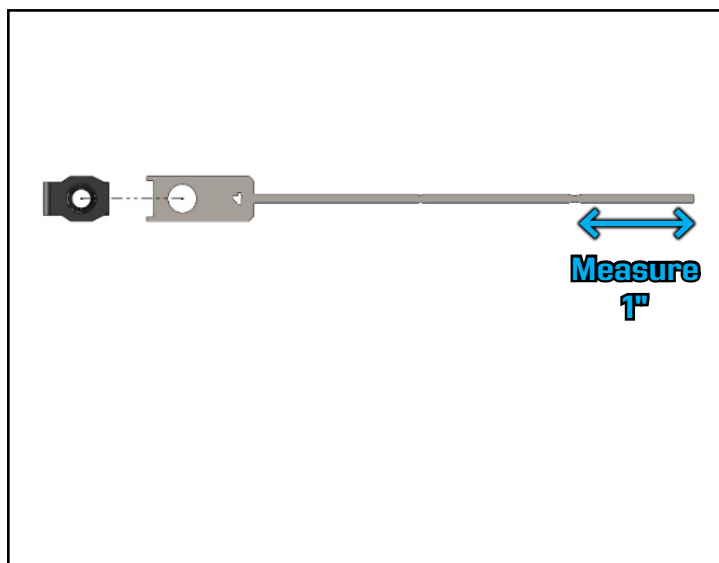
Note: the mounting locations mentioned are utilized for the stock transfer case & RCI transfer case skid plate installation, refer to the transfer case installation guide for further information.

If equipped with an OEM transfer case skid plate –OR– have an RCI transfer case skid plate: reinstall the skid plate utilizing the OEM mounting locations after the sliders have been fully installed.



Step #24

Prepare the LH front frame plate MP4 bracket by attaching a speed clip, then measure 1" from the end of the MP4 bracket and mark the MP4.



Measure
1"

Section 2: Installing the New Rock Sliders

Step #25 | Locking Pliers -OR- Bench Vise

Bend the LH front frame plate MP4 bracket 90° at the mark (arrow) previously made as shown.



Step #26 | Locking Pliers, 15mm Socket & Ratchet

Install the prepared LH front frame plate MP4 assembly through the LH frame rail (arrow) and align it with the hole on the side of the front frame plate.

Install the provided full-moon washer, flat washer, M10 x 40mm bolt (circled in **YELLOW**), and loosely thread it into the aligned MP4 assembly.

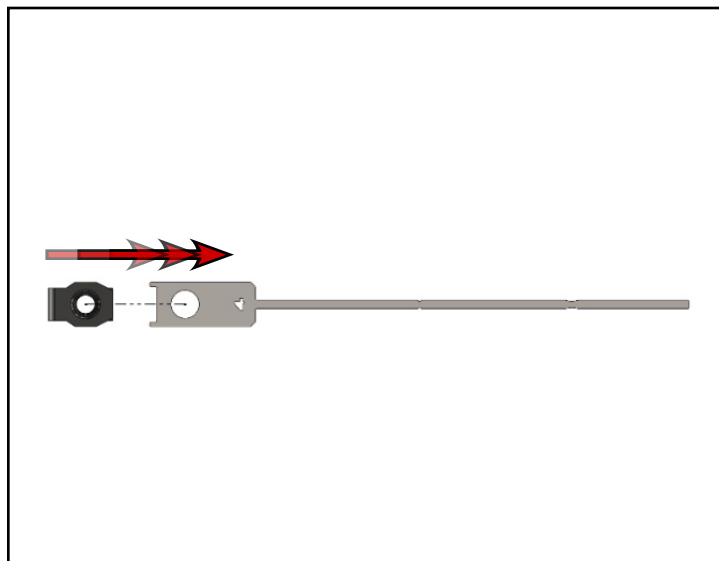
Tech tip: Using a pair of locking pliers attached to the end of the MP4 bracket will make aligning the speed clip with the hole in the frame and frame plate easier.



Section 2: Installing the New Rock Sliders

Step #27

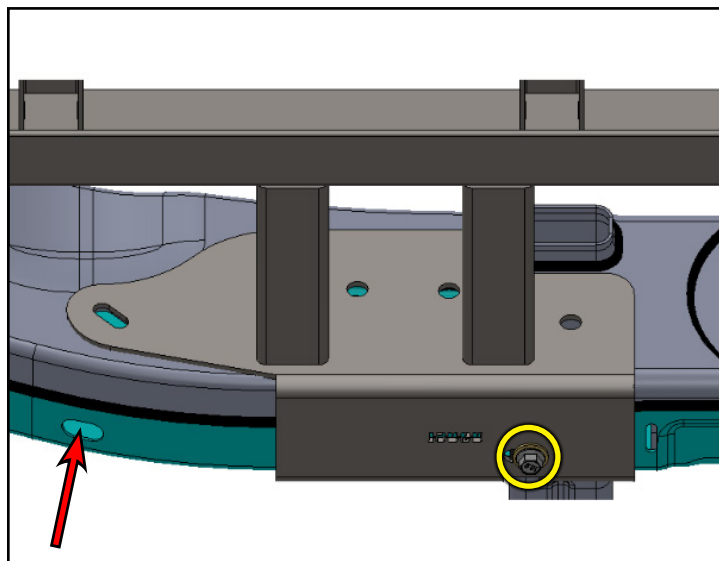
Prepare the LH rearmost bottom facing MP4 bracket by attaching a provided speed clip.



Step #28 15mm Socket & Ratchet

Install the assembled LH rearmost lower facing MP4 bracket through the oval shaped hole in the frame (arrow) and align the threaded speed clip with the bottom facing hole (circled in **YELLOW**).

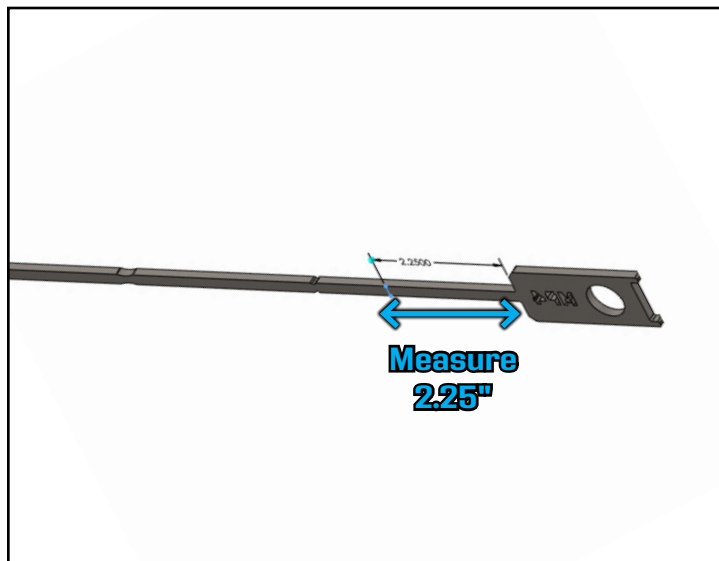
Once the threaded speed clip on the MP4 bracket is aligned with the mounting location, secure the MP4 with the provided M10 hardware (circled in **YELLOW**).



Section 2: Installing the New Rock Sliders

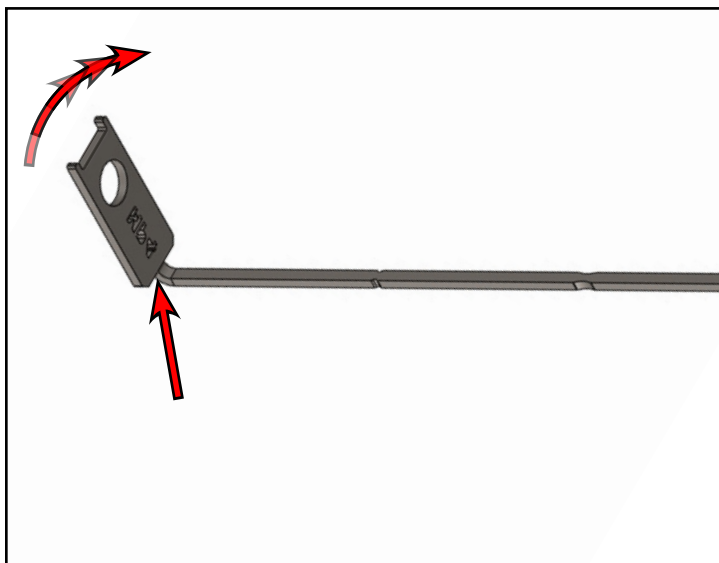
Step #29 | Tape Measure & Paint Pen -OR- Marker

Prepare the LH rearmost side facing MP4 bracket by measuring 2.25" from the base of the MP4 mounting plate and mark the bracket.



Step #30 | Locking Pliers -OR- Bench Vise

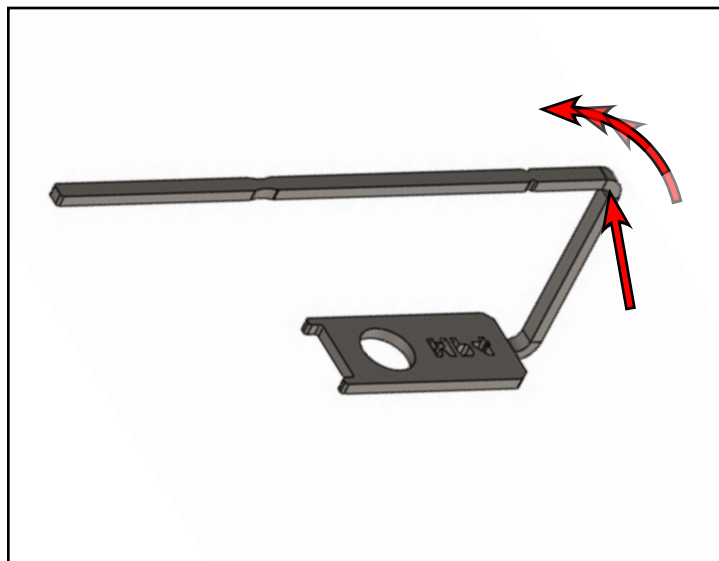
Bend the LH rearmost side facing MP4 bracket upward 90° at the base of the mounting plate (arrow) as shown.



Section 2: Installing the New Rock Sliders

Step #31 | Locking Pliers -OR- Bench Vise

Bend the LH rearmost side facing MP4 bracket at the mark (arrow) previously made, over the mounting plate of the bracket as shown.

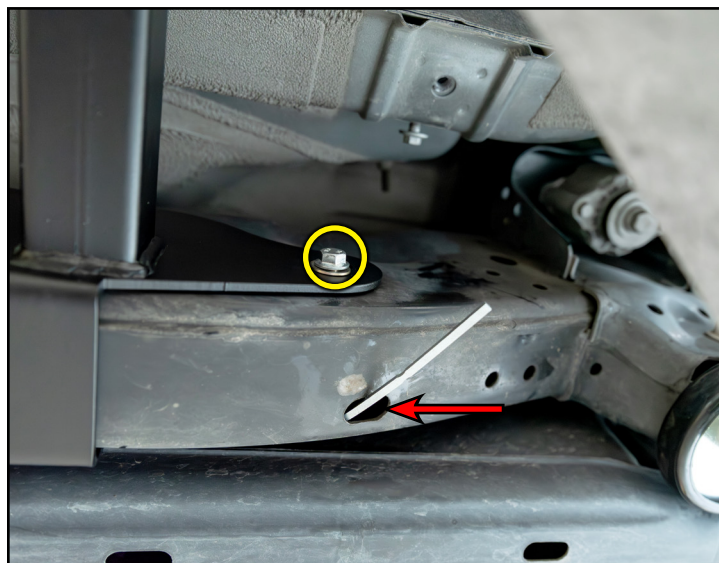


Step #32 | 15mm Socket & Ratchet

At the rear of the LH frame, slide the prepared MP4 assembly through the oval shaped hole (arrow) in the LH frame rail and align the threaded speed clip with the mounting location on the vertical surface of the LH rear frame plate.

Once aligned, secure the MP4 with the provided M10 hardware (circled in **YELLOW**).

Remove any excess MP4 bracket that extends below the frame rail.

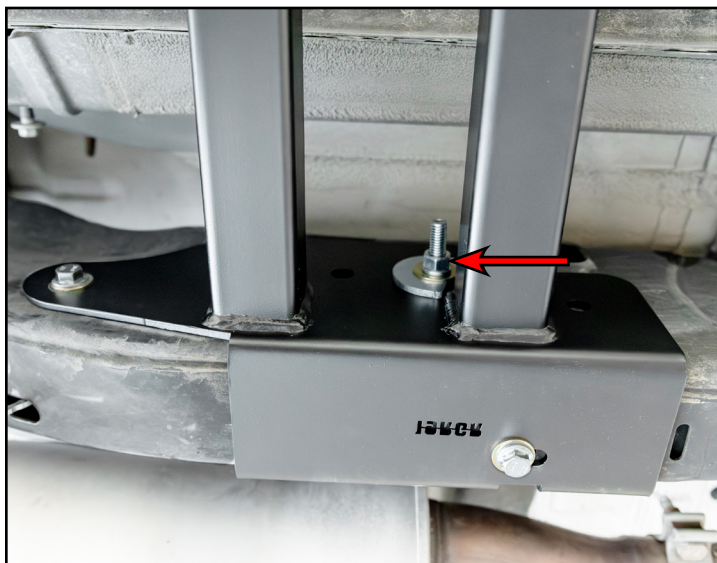


Section 2: Installing the New Rock Sliders

Step #33 9/16 Socket & Ratchet

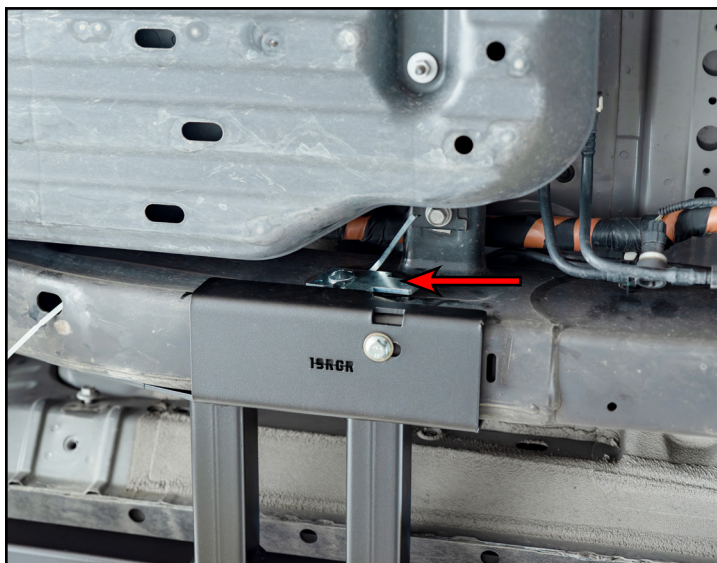
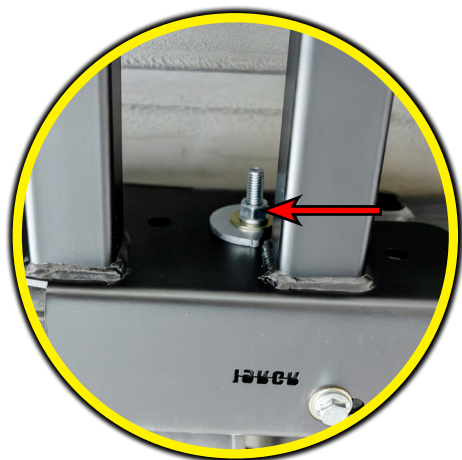
Install a half-moon washer, flat washer, split lock washer, and hex nut onto the 7/16" carriage bolt (arrow).

From the outside frame rail slide the carriage bolt assembly through the hole in the LH slider rear frame plate and vehicle frame rail.



Step #34 9/16 Socket & Ratchet

Hook a 7/16" carriage bolt plate (arrow) over the head of the carriage bolt from the previous step and tighten the nut (arrow in inset photo) on the opposite side by hand.

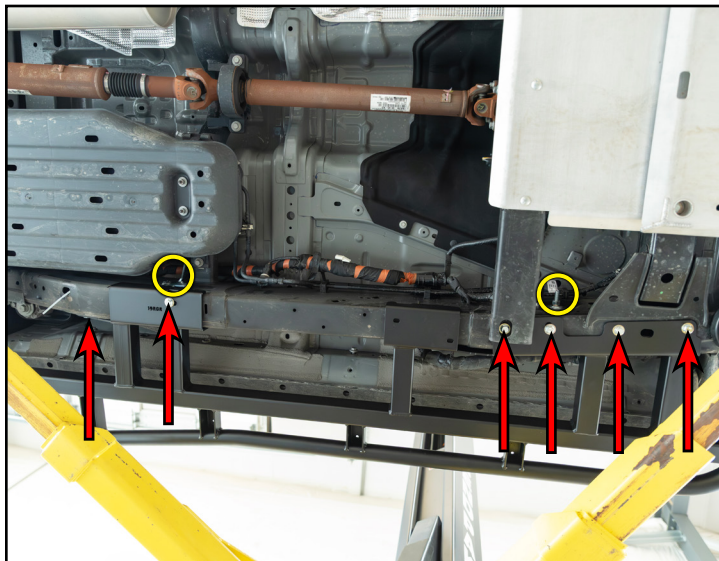


Section 2: Installing the New Rock Sliders

Step #33 | 15mm, 9/16 Sockets & Torque Wrench

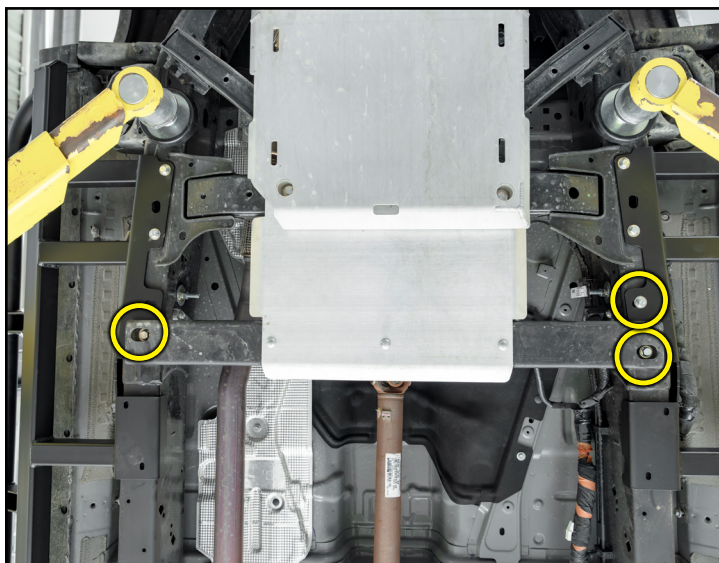
Fully tighten all of the hardware for the RH rock slider.

- Torque the M10 hardware to 50 Ft-lbs (arrows)
- Torque the 7/16 hardware to 20 Ft-lbs (circled in **YELLOW**)



Step #34 | 15mm, 16mm Sockets & Torque Wrench

Reinstall the OEM transfer case –OR– RCI skid plate and fully tighten the hardware (circled in **YELLOW**).



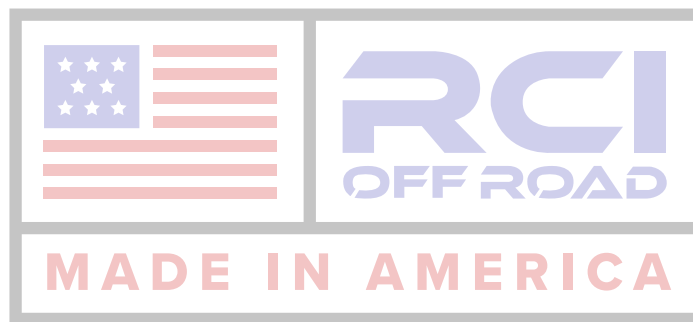
*For our installation purposes an RCI transfer case skid plate was utilized.

CONGRATULATIONS, YOUR INSTALLATION IS COMPLETE!

ENJOY YOUR NEW RCI PROTECTION!



**Share your new install with us on social media!
We love seeing our products in the wild!**



Follow us on social media:
[instagram.com/rcioffroad/#](https://www.instagram.com/rcioffroad/)
[facebook.com/RCIOffroad](https://www.facebook.com/RCIOffroad)
[youtube.com/@RCIOFFROAD](https://www.youtube.com/@RCIOFFROAD)

Contact:
1.970.797.3089
SALES@RCIOFFROAD.COM
6701 N. FRANKLIN AVE. LOVELAND, CO 80538

These instructions are provided as a courtesy by RCI Offroad

Disclaimer: The products sold by RCI Metalworks are intended for off-road use only, should not be modified, and are for use only on the vehicle(s) specifically stated. RCI Metalworks makes no warranties express or implied, including of fitness for a particular purpose or merchantability. RCI Metalworks will not be liable for any damages arising out of the use or misuse of its products. It is the customers' responsibility to ensure the products are safely and properly attached to the vehicle, and all products should be installed by trained professionals. We strive to maintain extremely high-quality standards; however, all RCI Metalworks products are individually handcrafted, may vary slightly, and may contain minor imperfections. Due to the nature of raw aluminum, the material may have minor scratches and other blemishes caused by the manufacturing process, especially on the back side of product. RCI Metalworks is constantly seeking to improve its products and reserves the right to make changes to any product.