

TIME FOR INSTALLATION

.05 - 1 HOUR

# RCI OFFROAD

EASY

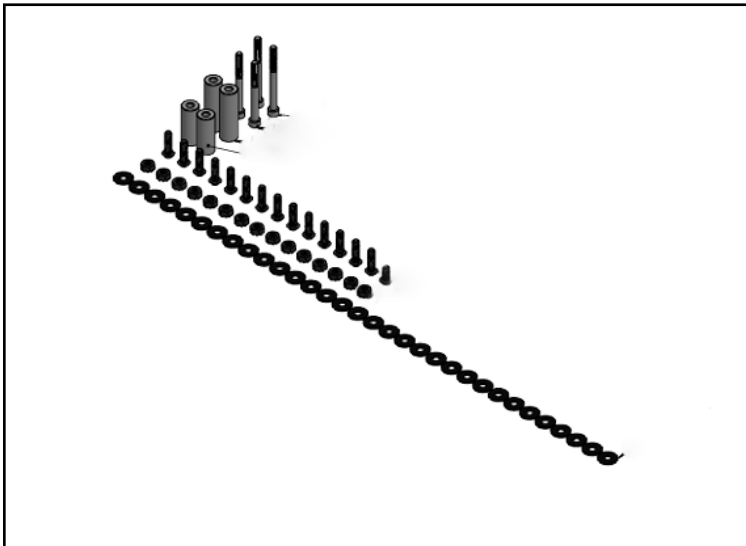
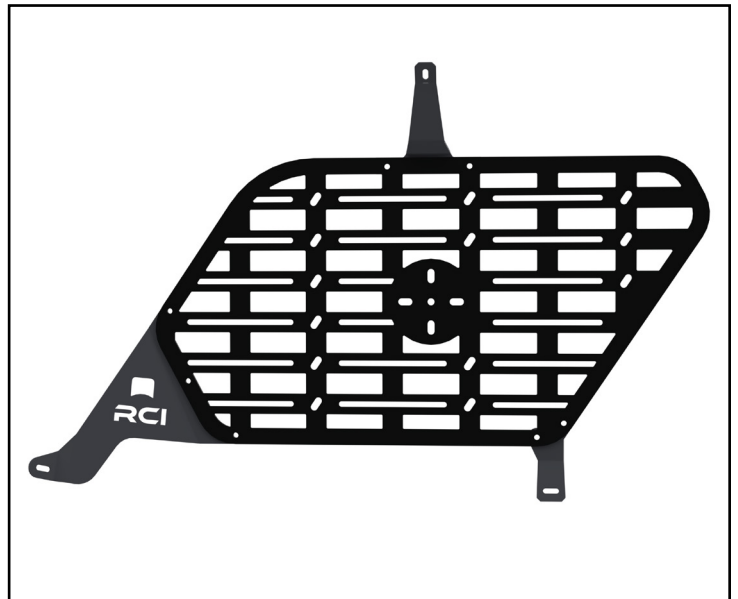


BASIC SKILLS  
REQUIRED

## 10-24 Toyota 4Runner Interior Side Molle Panel Installation Guide

Contact RCI: [SALES@RCIOFFROAD.COM](mailto:SALES@RCIOFFROAD.COM)  
(970) 797-3089

Part Number	Description	Qty:
SM-01093	10+ T4R Interior Molle Front Bracket - RH	1
SM-01094	10+ T4R Interior Molle Front Bracket - LH	1
SM-01095	10+ T4R Interior Molle Top Bracket	2
SM-01096	10+ T4R Interior Molle Rear Bracket - RH	1
SM-01097	10+ T4R Interior Molle Rear Bracket - LH	1
SM-00192	10+ T4R Interior Molle Panels	2
HK-00100	10-24 T4R Interior Molle Panel HW Kit	1
HW-00019	1/4 USS Flat Washer Black Zinc	32
HW-00017	1/4-20 x 7/8 Button Socket Screw Blck	14
HW-00031	1/4-20 KEPS Nut 18-8 S.S. Black	14
HW-00195	AL Spacer - 1.5" Long	2
HW-00196	AL Spacer - 2.0" Long	2
HW-00197	M6-1 x 60 Socket Head Screw	2
HW-00198	M6-1 x 65 Socket Head Screw	2



**Caution:** Use hand tools, impact wrenches may cause damage if over torqued.

**Read the entire notes and instructions before installation.**

# Installation Notes

## Installation Notes:

**RH** refers to the passenger side of the vehicle.

**LH** refers to the driver side of the vehicle.

Always use the proper torque specifications.

If applicable to this installation, torque specifications will be listed throughout the document.

Please read all of these instructions and familiarize yourself with the complete process **BEFORE** you begin.

## General Safety:

Park your car in a safe, well lit, level area.

Shut the engine off and remove the key from the ignition switch.

Make sure any remote start devices are properly disabled.

**ALWAYS** wear safety glasses.

Make sure the parking brake is applied until the vehicle is safely lifted and supported.

Whether lifting a vehicle using an automotive lift or a hydraulic jack, utilize the factory specified lift points.

Lifting a vehicle in an incorrect location can cause damage to the suspension/running gear.

**ALWAYS** support the vehicle with properly rated jack stands.

**ALWAYS** read and follow all safety information and warnings for the equipment you are using.

## Required Tools:

1/4" Socket Set & Ratchet

Combination Wrench Set

Hex (Allen) Wrench Set –OR– Hex (Allen) Socket Set

Screwdriver set

## Section 1: Installing the New Interior Molle Panels

### Step #1 Flat Blade Screwdriver

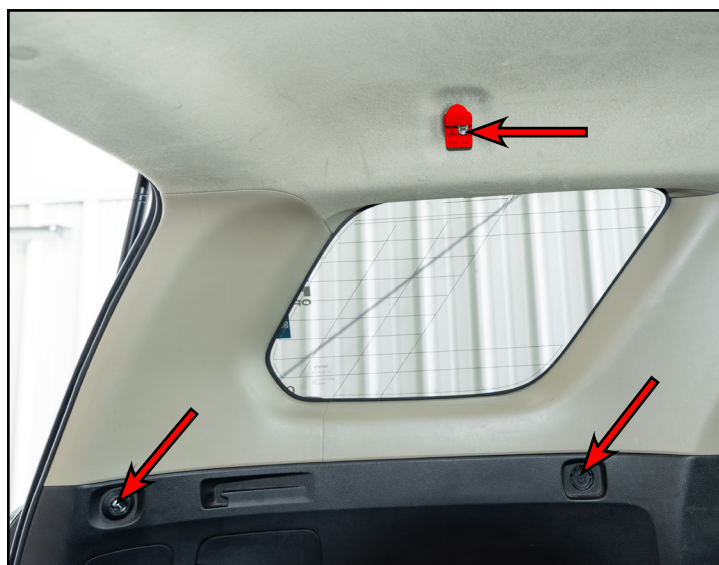
Remove all of the components and hardware from its packaging. Ensure that all of the components and hardware are present.

Remove the plastic caps (arrows) that cover the mounting locations and rotate the clip (circled in **RED**), then remove the clip from the vehicle.



### Step #2 10mm Socket & Ratchet

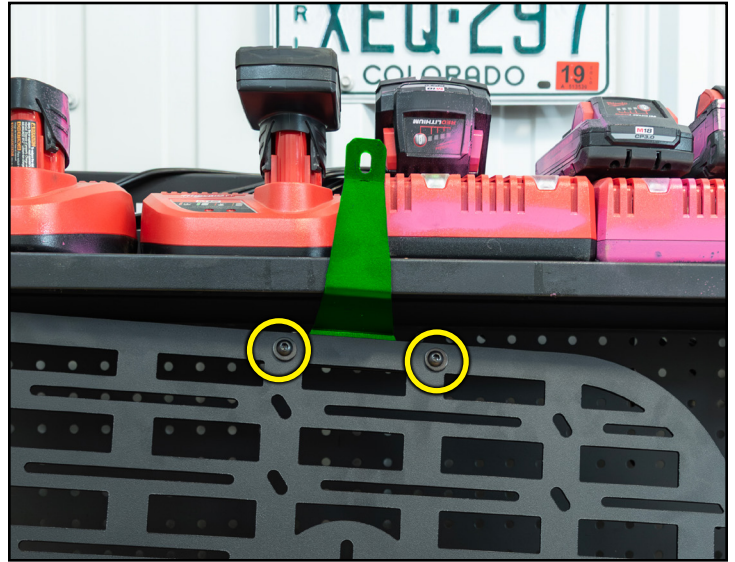
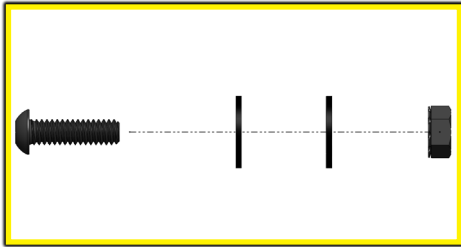
Remove the stock hardware (arrows) from their mounting locations and set them aside. Remove the hanger (highlighted in **RED**) from the vehicle.



# Section 1: Installing the New Interior Molle Panels

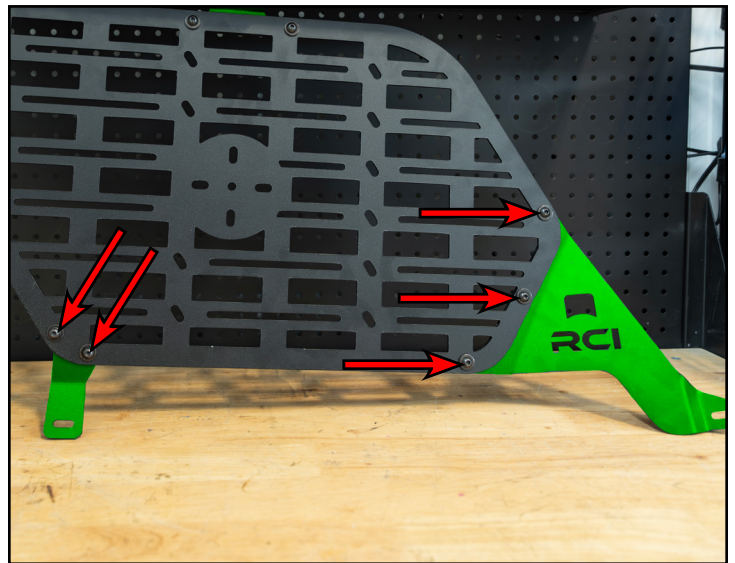
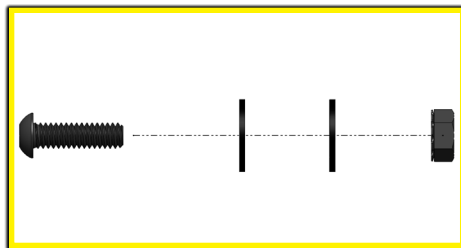
## Step #3 | 4mm Hex (Allen) & 7/16" Wrench

Install the provided upper bracket (highlighted in **GREEN**) onto the RCI interior molle panel and loosely install the provided 1/4" hardware (circled in **YELLOW**) as shown in the inset photo.



## Step #4 | 4mm Hex (Allen) & 7/16" Wrench

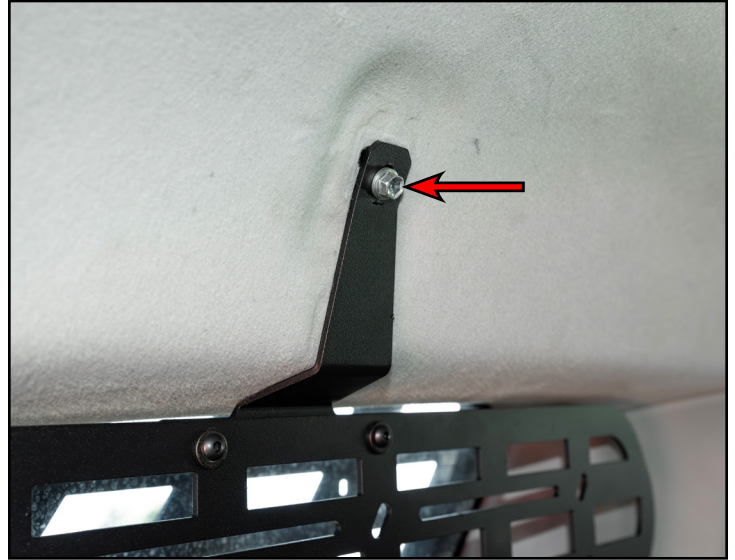
Install the provided bottom brackets (highlighted in **GREEN**) onto the RCI interior molle panel and secure them using the provided 1/4" hardware (arrows) as shown in the inset photo.



## Section 1: Installing the New Interior Molle Panels

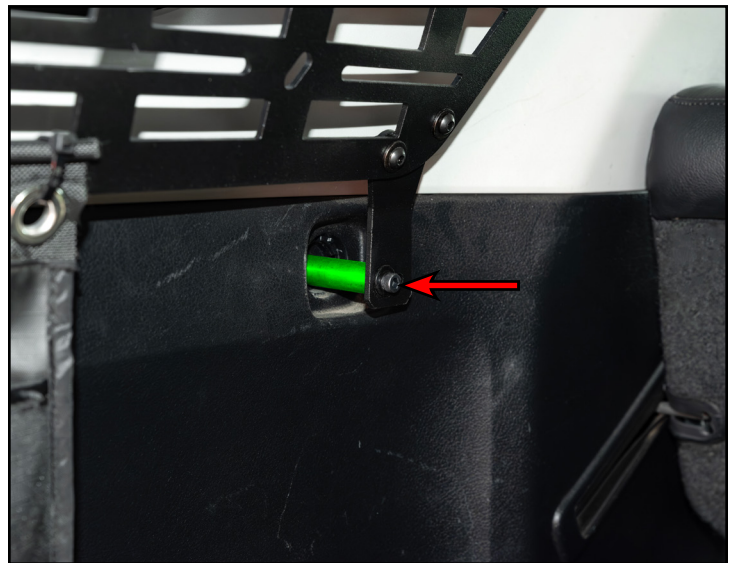
### Step #5 | 10mm Socket & Ratchet

Install the assembled molle panel into place, then reinstall the bolt (arrow) to secure the upper mounting bracket and tighten the bolt until snug.



### Step #6 | 5mm Hex (Allen)

Install the provided 2" spacer (highlighted in **GREEN**) between the new Molle panel and the lower frontmost mounting location, then secure it using the provided M6 x 65mm hardware (arrow) and tighten it until snug.



## Section 1: Installing the New Interior Molle Panels

### Step #7 | 5mm Hex (Allen)

Install the provided 1.5" spacer (highlighted in **GREEN**) between the new Molle panel and the lower rearmost mounting location, then secure it using the provided M6 x 60mm hardware (arrow) and tighten it until snug.



### Step #8 | 4mm Hex (Allen) & 7/16" Wrench

Fully tighten the 1/4" hardware (arrows) to fully secure the upper mounting bracket to the molle panel.

Repeat *steps 1-8* for the opposite side.

**NOTE:** Rotopax mounts can be utilized as shown, although it is recommended not to exceed one (1) gallon Rotopax containers per interior side molle panel.

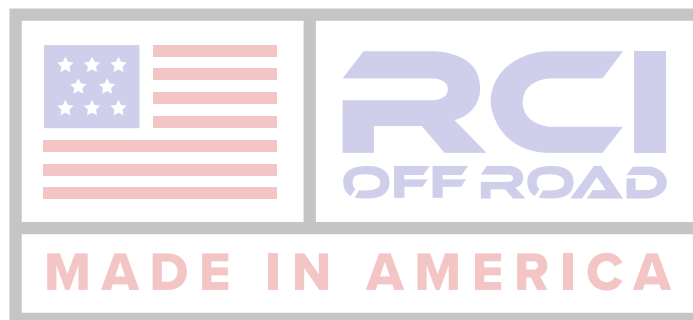


**CONGRATULATIONS, YOUR INSTALLATION IS COMPLETE!**

**ENJOY YOUR NEW RCI MOLLE PANEL!**



**Share your new install with us on social media!  
We love seeing our products in the wild!**



**Follow us on social media:**  
[instagram.com/rcioffroad/#](https://www.instagram.com/rcioffroad/)  
[facebook.com/RCIOffroad](https://www.facebook.com/RCIOffroad)  
[youtube.com/@RCIOFFROAD](https://www.youtube.com/@RCIOFFROAD)

**Contact:**  
1.970.797.3089  
SALES@RCIOFFROAD.COM  
6701 N. FRANKLIN AVE. LOVELAND, CO 80538

**These instructions are provided as a courtesy by RCI Offroad**

Disclaimer: The products sold by RCI Metalworks are intended for off-road use only, should not be modified, and are for use only on the vehicle(s) specifically stated. RCI Metalworks makes no warranties express or implied, including of fitness for a particular purpose or merchantability. RCI Metalworks will not be liable for any damages arising out of the use or misuse of its products. It is the customers' responsibility to ensure the products are safely and properly attached to the vehicle, and all products should be installed by trained professionals. We strive to maintain extremely high-quality standards; however, all RCI Metalworks products are individually handcrafted, may vary slightly, and may contain minor imperfections. Due to the nature of raw aluminum, the material may have minor scratches and other blemishes caused by the manufacturing process, especially on the back side of product. RCI Metalworks is constantly seeking to improve its products and reserves the right to make changes to any product.