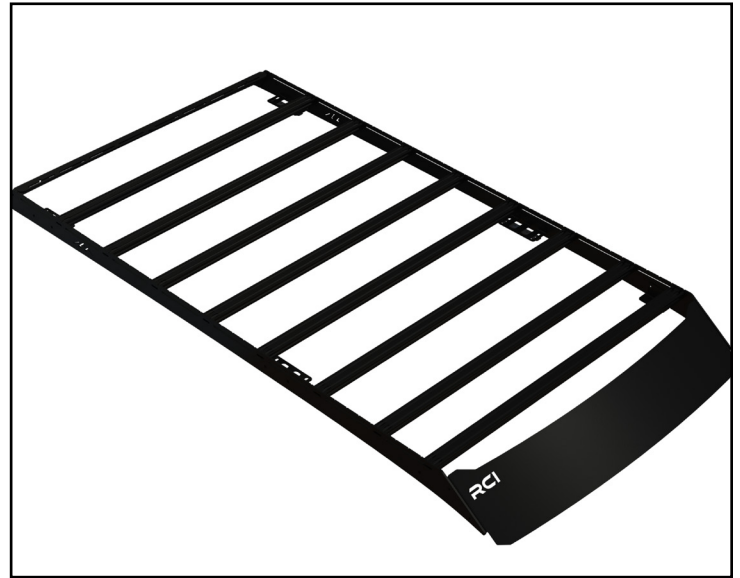
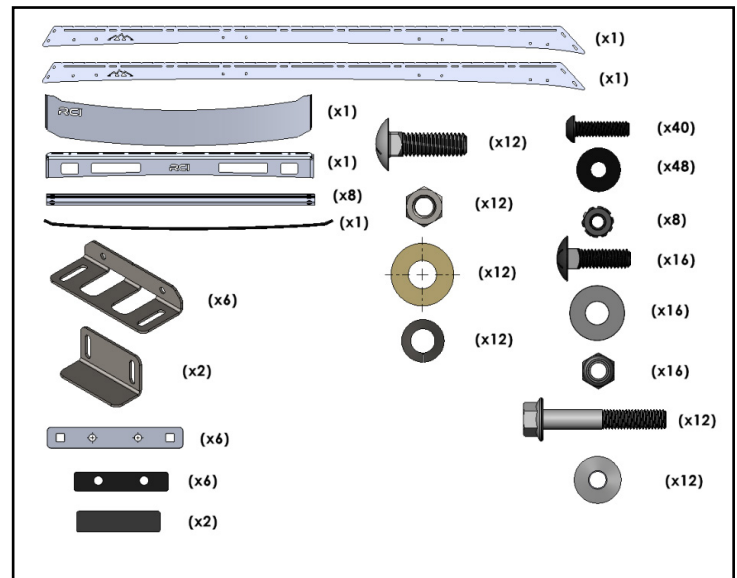


1-2 HOURS



25+ Toyota 4Runner Roof Rack Installation Guide

Part number	Description	Qty:
SM-01062	Roof Rack Side Panel Passenger	1
SM-01063	Roof Rack Side Panel Driver	1
SM-00360	Rear Fairing	1
SM-01064	Front Fairing	1
HW-00041	47" Roof Rack Extrusion Cross Bar	8
SM-00971	Adjustable Front Foot Bracket	2
SM-00970	Roof Rack Uni-Foot Bracket	6
SM-00971	Uni-Foot Base	6
HK-00169	Kit: LC250 Roofrack Hardware	1



Read the entire notes and instructions before installation.

Installation Notes

Installation Notes:

RH refers to the passenger side of the vehicle.

LH refers to the driver side of the vehicle.

Always use the proper torque specifications.

If applicable to this installation, torque specifications will be listed throughout the document.

Please read all of these instructions and familiarize yourself with the complete process **BEFORE** you begin.

General Safety:

Park your car in a safe, well lit, level area.

Shut the engine off and remove the key from the ignition switch.

Make sure any remote start devices are properly disabled.

ALWAYS wear safety glasses.

Make sure the parking brake is applied until the vehicle is safely lifted and supported.

Whether lifting a vehicle using an automotive lift or a hydraulic jack, utilize the factory specified lift points.

Lifting a vehicle in an incorrect location can cause damage to the suspension/running gear.

ALWAYS support the vehicle with properly rated jack stands.

ALWAYS read and follow all safety information and warnings for the equipment you are using.

Required Tools:

1/4" & 3/8" Socket Sets & Ratchets

Combination Wrench Set

Hex (Allen) Sockets –OR– Wrenches

Shears

Trim Removal Tool

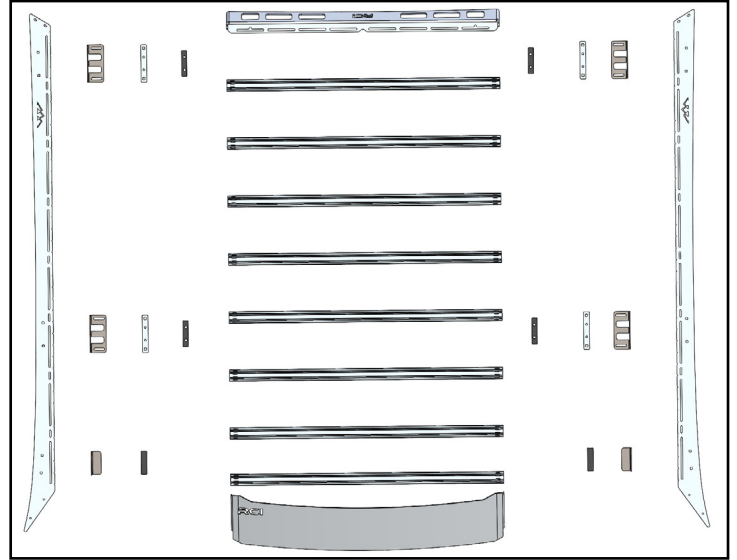
Torque Wrenches

Section 1: Remove the Stock Roof Rack Rails

Step #1

Unpack and remove all components and hardware from their packaging and verify that all the components are present. Lay out the 47" T-slot crossbars, fairings, and side panels, ensuring the mountains logo is facing the appropriate direction.

Tech tip: Lay out and assemble the roof rack components on a soft surface, such as a large blanket to minimize the risk of accidental scratches.



Step #2 Trim Removal Tool

Release the clips that secure the plastic covers for the front and back mounting locations on the stock roof rack rails, then rotate the cover to remove the cover from the roof rack rails.

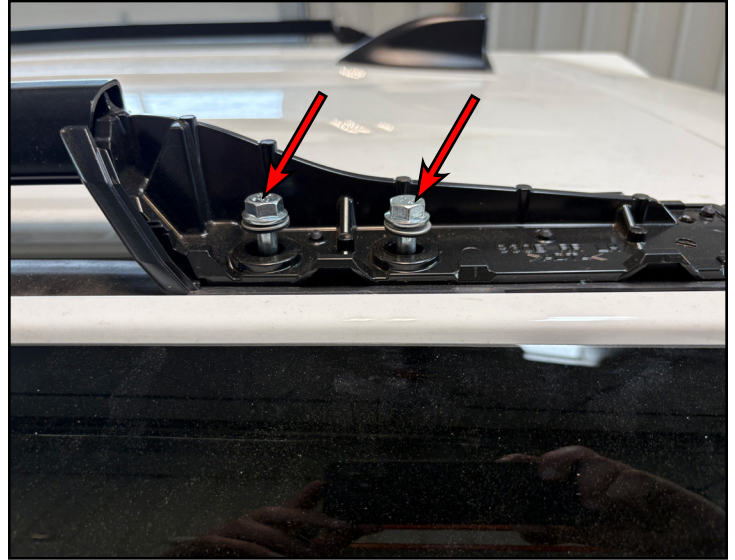


Section 1: Remove the Stock Roof Rack Rails

Step #3	12mm Socket & Ratchet
----------------	----------------------------------

Remove the bolts (arrows) that secure the stock roof rack rails to the vehicle. Repeat steps 2–3 to the remaining mounting locations, then remove the stock roof rack rails from the vehicle.

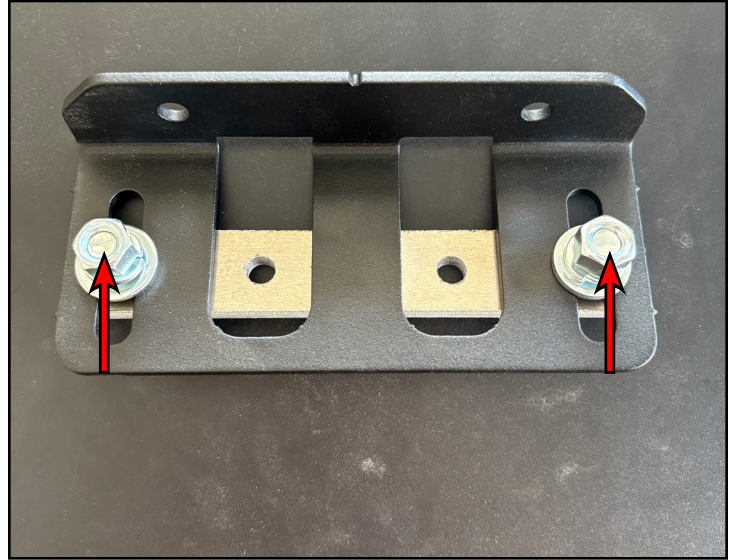
Tech tip: When removing the bolts alternate loosening between the two on each corner to prevent the track from rotating inside of the roof.



Section 2: Installing the New Roof Rack

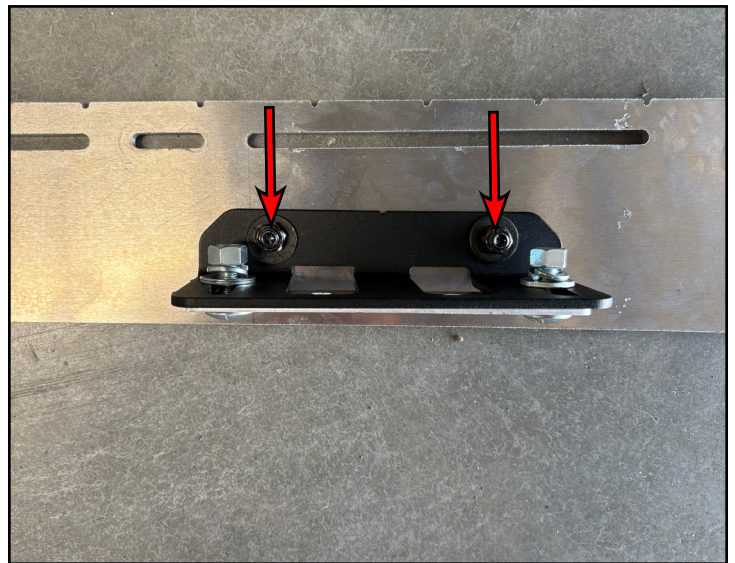
Step #1 9/16 SAE Socket & Ratchet

Collect the 3/8" carriage bolts, flat washers, split lock washers and nuts. Install the mounting plate bracket onto the assembly base, then loosely secure it with the provided 3/8" hardware (arrows).



Step #2 1/2" Socket & Ratchet

Collect the required 5/16" carriage bolts, washers and nylon lock nuts, then install the assembled universal mounting brackets to the central and rear mounting locations on the side panels then, tighten the 5/16" hardware (arrows) until snug.



Section 2: Installing the New Roof Rack

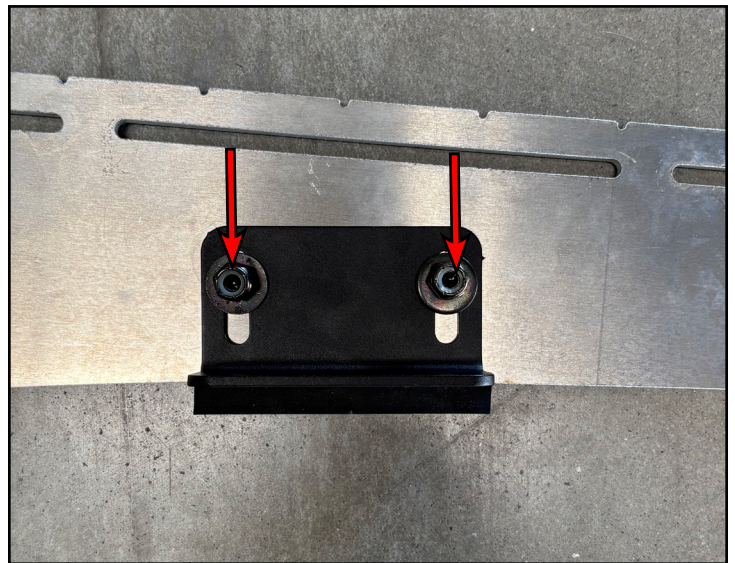
Step #3

Remove the adhesive backing from the front mounting bracket pad, then install the pad onto the the bottom of the front mounting bracket base.



Step #4 1/2" Socket & Ratchet

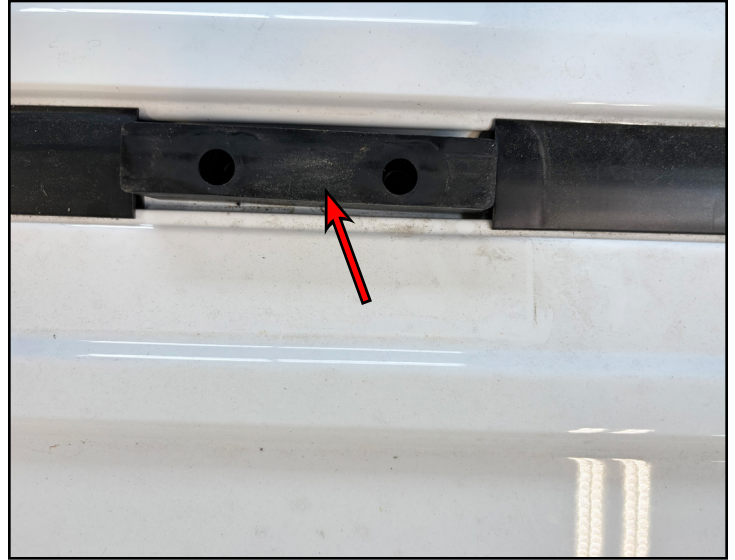
Collect the required 5/16" carriage bolts, washers and nylon lock nuts, then install the assembled front mounting brackets to the side panels and secure it in place by loosely installing the 5/16" hardware (arrows).



Section 2: Installing the New Roof Rack

Step #5

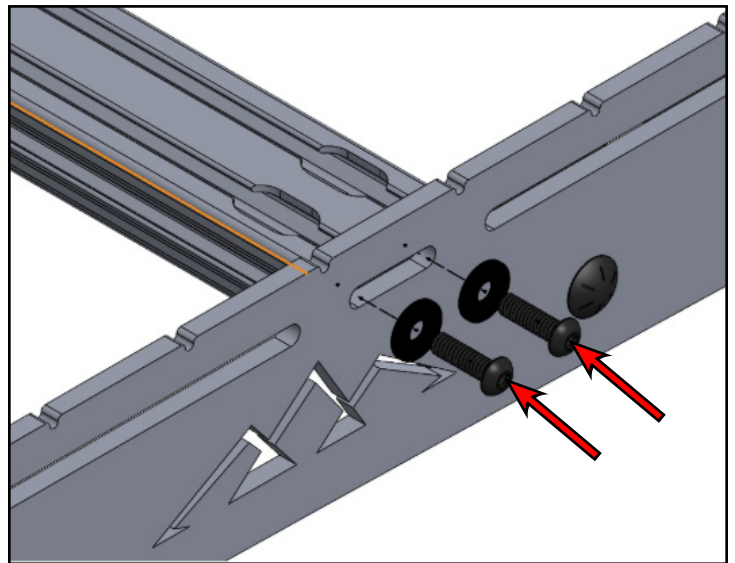
Install the rubber mounting pads (arrow) onto the stock roof rack mounting locations and align the holes in the bases with the holes in the roof.



Step #6 4mm Hex (Allen) Socket & Ratchet

Collect the required 1/4" screws and washers, then install the T-slot crossbars with the T-slot opening facing upward using the 1/4" hardware (arrows) and tighten them until snug.

Tech tip: Assemble the roof rack components on a soft surface, such as a large blanket to minimize the risk of accidental scratches.

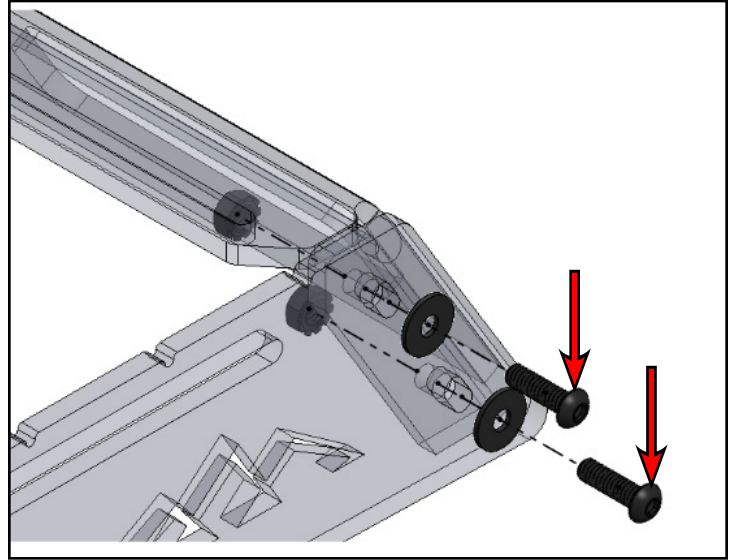


Note: RCI's roof racks are designed to have the aluminum T-Slot cross bars mounted to the small oval cutouts on the side panels (as shown). However, there may be a need for them to be shifted to other positions to accommodate third-party accessories.

Section 2: Installing the New Roof Rack

Step #7 | 4mm Hex (Allen) & 7/16" SAE Wrench

Collect the required 1/4" screws, washers and keps nuts. Install the rear fairing into place, then secure it to the rear side panels using the provided 1/4" hardware (arrows) and tighten them until snug.



Step #8 | Scissors –OR– Shears

Install the provided bulb seal (arrow) onto the bottom edge of the front fairing and ensure that the seal is fully installed onto the front fairing, then cut the excess length of bulb seal (YELLOW line).

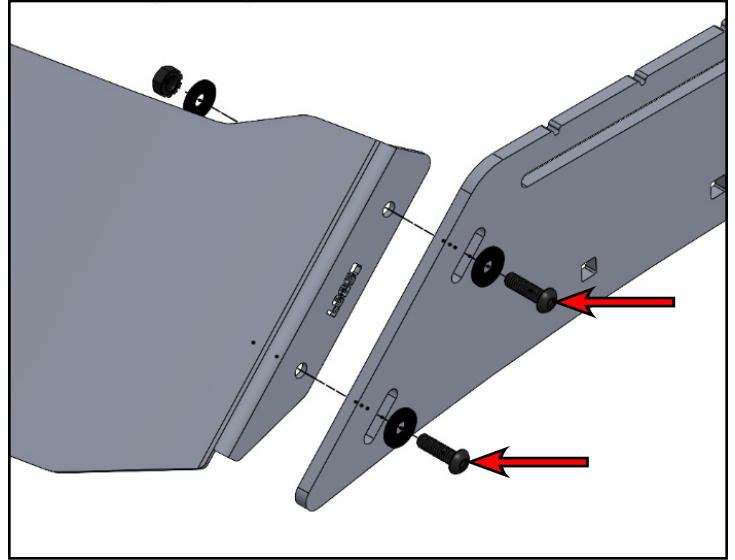


Tech tip: Using scissors will work to cut cut the bulb seal but shears will cut the bulb seal easier.

Section 2: Installing the New Roof Rack

Step #9 4mm Hex (Allen) & 7/16" SAE Wrench

Collect the needed 1/4" screws, washers and keps nuts. Install the front fairing into place and loosely install the provided 1/4" hardware (arrows) to secure it to the side panels.



Step #10

Lift the assembled roof rack onto the vehicle, ensuring that the central and rear bracket locations are aligned with the rubber mounting pads on the vehicle.

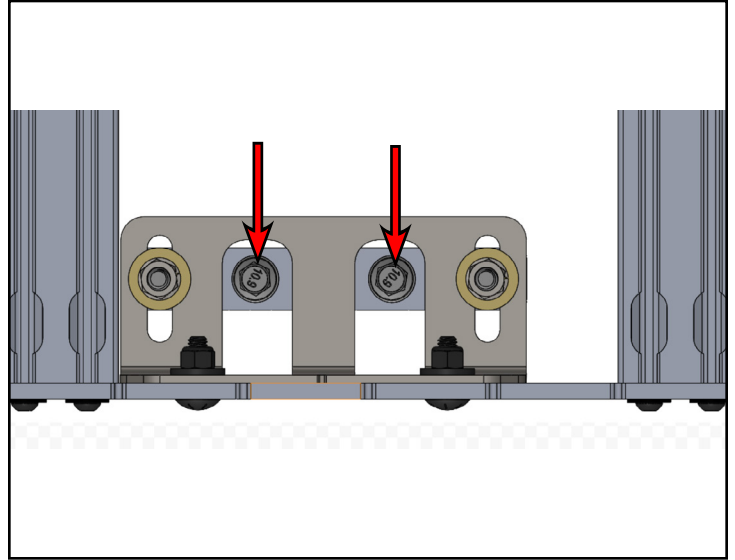
Tech tip: Having a friend or two to assist will be required for this installation.



Section 2: Installing the New Roof Rack

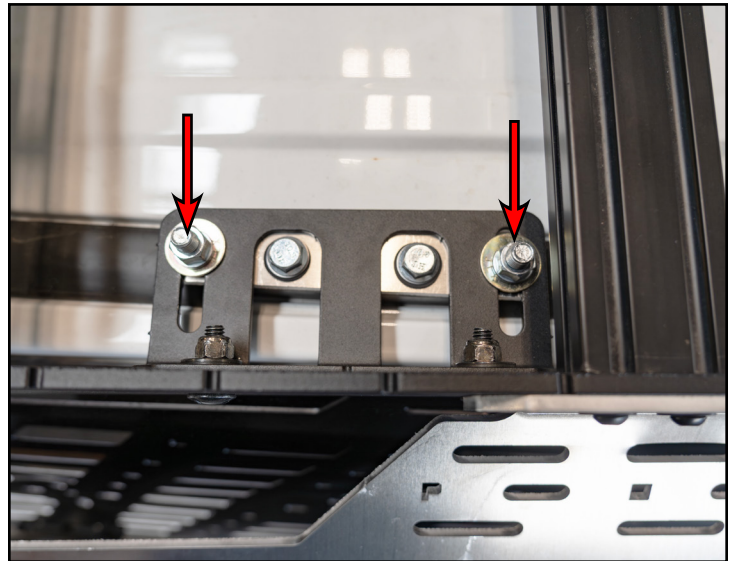
Step #11 13mm Socket & Torque Wrench

Collect the required M8 bolts and bonded washers (arrows), then, secure the roof rack to the vehicle with the M8 hardware through the center and rearmost brackets (as shown in inset photo below), then torque the the bolts to 60 in-lb.



Step #12 9/16" SAE Socket & Ratchet

Center the roof rack on the vehicle and fully tighten the 3/8" hardware (arrows) on the center and rear mounting brackets on both sides.



Section 2: Installing the New Roof Rack

Step #13 | 1/2" SAE Socket & Ratchet

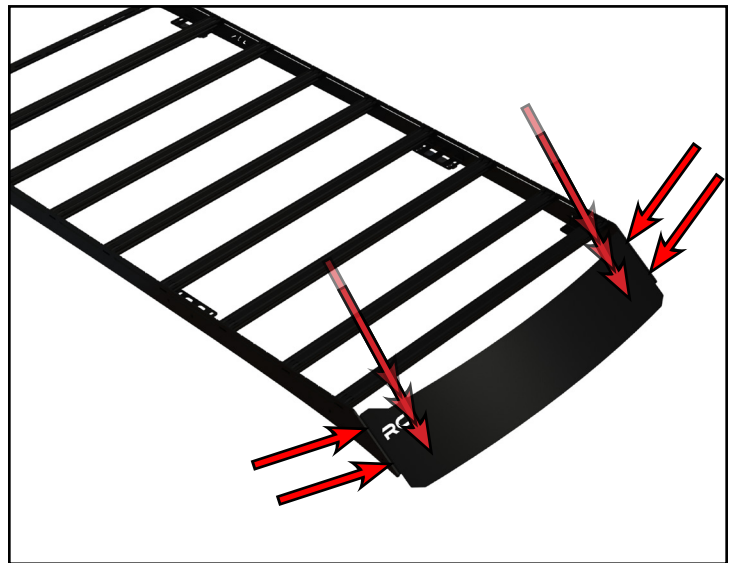
Pull up on the front of the roof rack while pushing down on the front mounting bracket and fully tighten the 5/16" hardware (arrows).



Step #14 | 4mm Hex (Allen) & 7/16" SAE Wrench

Push down on the sides of the front fairing and ensure that the seal rests flush against the roof of the vehicle, then fully tighten down the 1/4" hardware (arrows).

Ensure that all of the roof rack hardware is fully tightened.

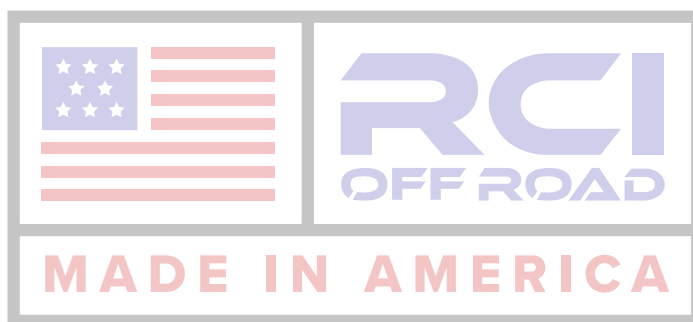


CONGRATULATIONS, YOUR INSTALLATION IS COMPLETE!

ENJOY YOUR NEW RCI ROOF RACK!



**Share your new install with us on social media!
We love seeing our products in the wild!**



Follow us on social media:
[instagram.com/rcioffroad/](https://www.instagram.com/rcioffroad/)
[facebook.com/RCIOffroad](https://www.facebook.com/RCIOffroad)
[youtube.com/@RCIOFFROAD](https://www.youtube.com/@RCIOFFROAD)

Contact:
1970.797.3089
SALES@RCIOFFROAD.COM
6701 N. FRANKLIN AVE. LOVELAND, CO 80538

These instructions are provided as a courtesy by RCI Offroad

Disclaimer: The products sold by RCI Metalworks are intended for off-road use only, should not be modified, and are for use only on the vehicle(s) specifically stated. RCI Metalworks makes no warranties express or implied, including of fitness for a particular purpose or merchantability. RCI Metalworks will not be liable for any damages arising out of the use or misuse of its products. It is the customers' responsibility to ensure the products are safely and properly attached to the vehicle, and all products should be installed by trained professionals. We strive to maintain extremely high-quality standards; however, all RCI Metalworks products are individually handcrafted, may vary slightly, and may contain minor imperfections. Due to the nature of raw aluminum, the material may have minor scratches and other blemishes caused by the manufacturing process, especially on the back side of product. RCI Metalworks is constantly seeking to improve its products and reserves the right to make changes to any product.