

TIME FOR INSTALLATION

30 MIN. - 1 HOUR

RCI OFFROAD

EASY

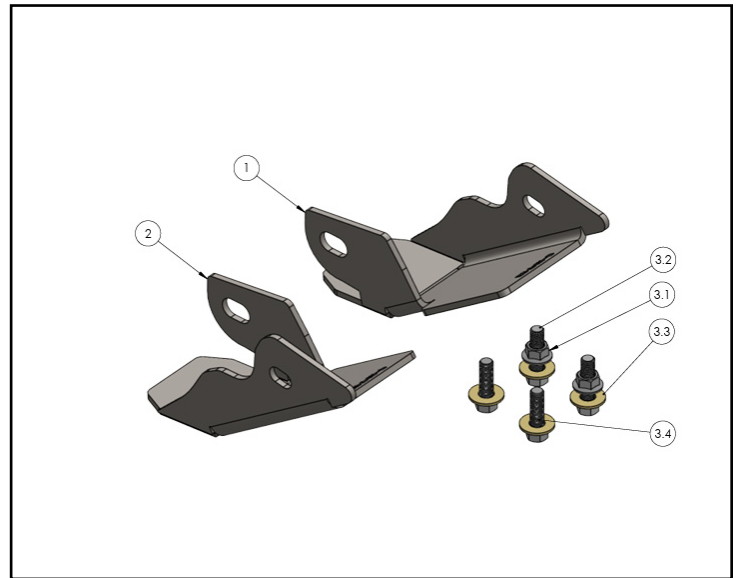


BASIC SKILLS
REQUIRED

25+ Toyota 4Runner Lower Link Skid Plate Installation Guide

Contact RCI: SALES@RCIOFFROAD.COM
(970) 797-3089

Item No.	Part number	Description	Qty:
1	SM-01059	25 T4R Front Lower Link Skid LH - Driver	1
2	SM-01060	25 T4R Front Lower Link Skid RH - Passenger	1
3	HK-00139	KIT: 24+ Front Lower Link Skid Hardware	1
3.1	HW-00171	M10 x 1.5 Serrated Flange Nut	2
3.2	HW-00021	M10-1.5 x 35mm Hex Flange Bolt	2
3.3	HW-00026	3/8 USS Flat Washer	4
3.4	HW-00077	M10-1.25 x 30mm Hex Flange Bolt	2



Caution: Use hand tools, impact wrenches may cause damage if over torqued.

Read the entire notes and instructions before installation.

Installation Notes

Installation Notes:

RH refers to the passenger side of the vehicle.

LH refers to the driver side of the vehicle.

Always use the proper torque specifications.

If applicable to this installation, torque specifications will be listed throughout the document.

Please read all of these instructions and familiarize yourself with the complete process **BEFORE** you begin.

General Safety:

Park your car in a safe, well lit, level area.

Shut the engine off and remove the key from the ignition switch.

Make sure any remote start devices are properly disabled.

ALWAYS wear safety glasses.

Make sure the parking brake is applied until the vehicle is safely lifted and supported.

Whether lifting a vehicle using an automotive lift or a hydraulic jack, utilize the factory specified lift points.

Lifting a vehicle in an incorrect location can cause damage to the suspension/running gear.

ALWAYS support the vehicle with properly rated jack stands.

ALWAYS read and follow all safety information and warnings for the equipment you are using.

Required Tools:

1/4", 3/8" & 1/2" Socket Sets & Ratchets

Floor Jack

Jack Stands

Combination Wrench Set

Plier Set

Torque Wrenches

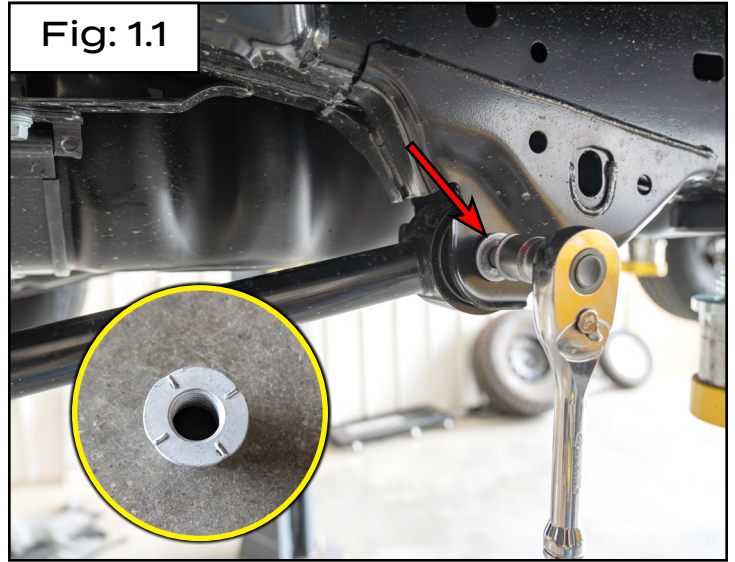
Section 1: Installing the New Lower Link Skid Plate

Step #1 19mm Wrench, 19mm Socket & Ratchet

Unpack and remove all of the components and hardware from its packaging, then verify all the components are present.

Loosen the bolt (**arrow** in **Fig: 1.1**), then remove the nut (inset photo in **Fig: 1.1**) and only back out the bolt enough for the lower link skid plate to be installed.

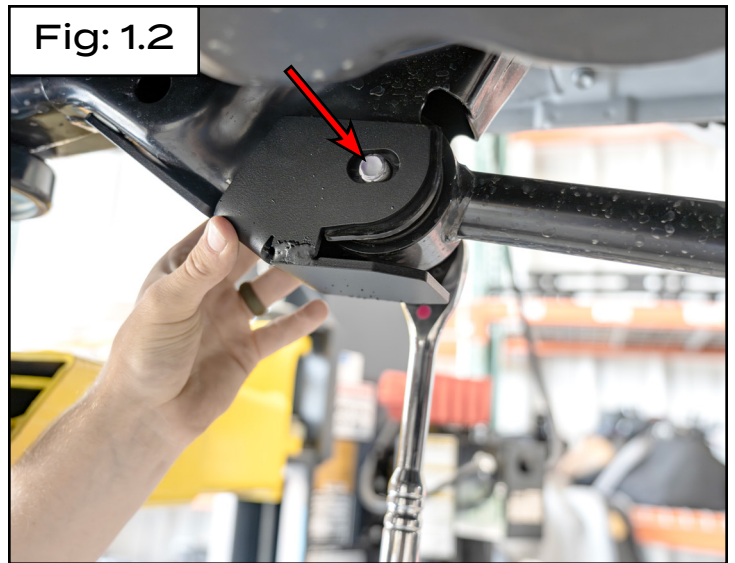
Fig: 1.1



Step #2

Slide the new lower link skid plate into place, then push the bolt (**arrow** in **Fig: 1.2**) all the way back through to hold the skid plate in place.

Fig: 1.2

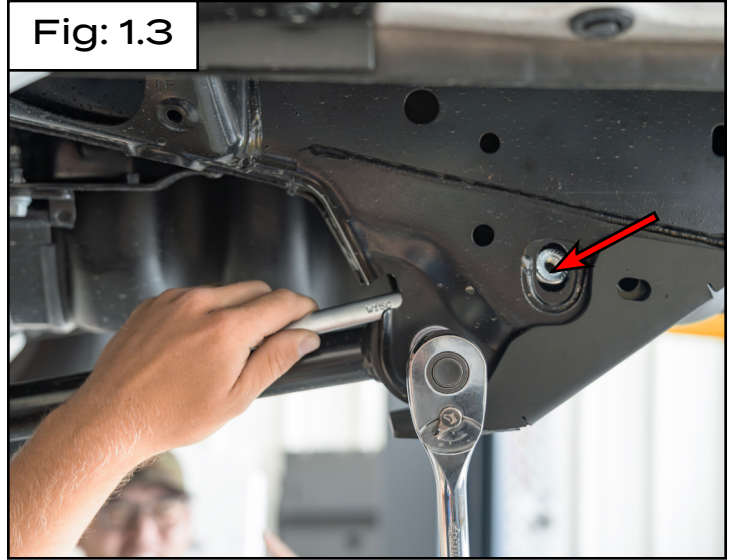


Section 1: Installing the New Lower Link Skid Plate

Step #3 15mm Wrench

Place the provided nut (**arrow** in **Fig: 1.3**) in the boxed end of a combination wrench and slide it in between the lower link and the mount and loosely install the provided M10 bolt.

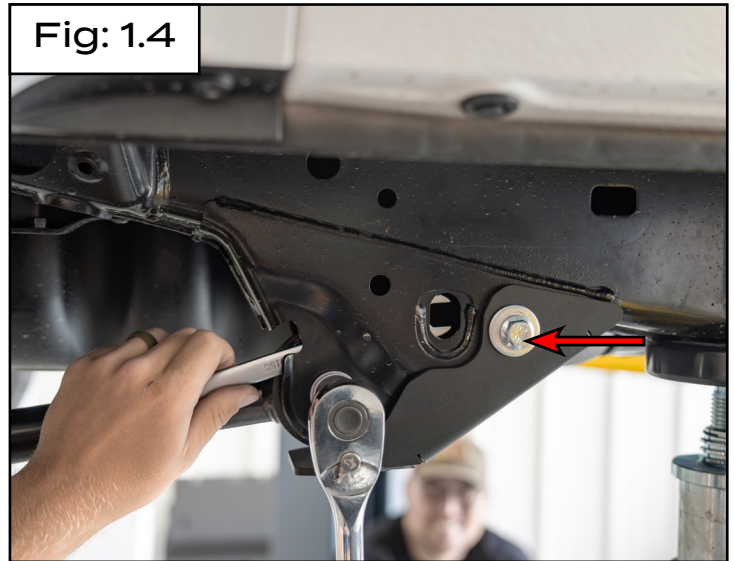
Fig: 1.3



Step #4 15mm Wrench, 15mm Socket & Ratchet

After the bolt is threaded into the nut remove the boxed end of the wrench and flip it around to the open end, then use it to secure the nut while tightening the bolt (**arrow** in **Fig: 1.4**).

Fig: 1.4



Section 1: Installing the New Lower Link Skid Plate

Step #5 | 15mm, 19mm Sockets & Torque Wrench

Inspect all of the hardware and ensure that they are tightened to the following torque specs.

- Torque the M10 hardware to 37 ft-lbs (**arrow** in **Fig: 1.5**).
- Torque the factory lower link bolt (circled in **YELLOW** in **Fig: 1.5**) to 96 ft-lbs.

Fig: 1.5



Step #6

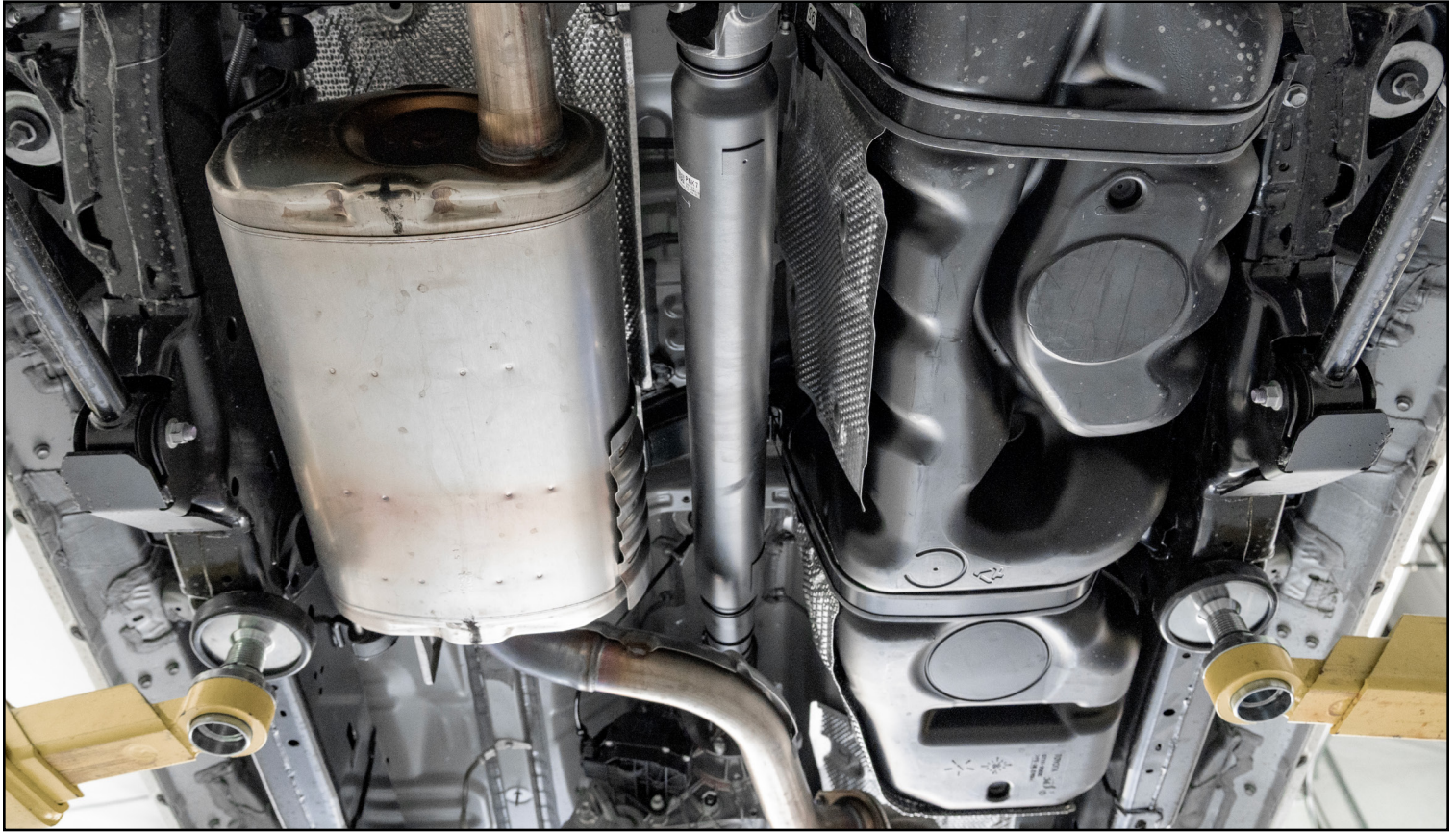
Repeat *steps 1–5* for the opposite side.

Fig: 1.6

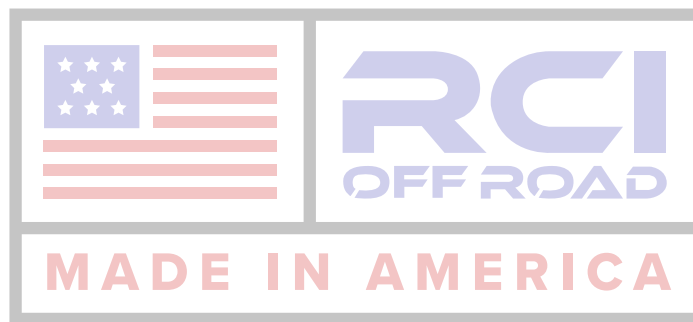


CONGRATULATIONS, YOUR INSTALLATION IS COMPLETE!

ENJOY YOUR NEW RCI PROTECTION!



**Share your new install with us on social media!
We love seeing our products in the wild!**



Follow us on social media:
[Instagram.com/rcioffroad](https://www.instagram.com/rcioffroad)
[Facebook.com/RCIOffroad](https://www.facebook.com/RCIOffroad)
[Youtube/@RCIOFFROAD](https://www.youtube.com/@RCIOFFROAD)

Contact:
1.970.797.3089
SALES@RCIOFFROAD.COM
6701 N. FRANKLIN AVE. LOVELAND, CO 80538

These instructions are provided as a courtesy by RCI Offroad

Disclaimer: The products sold by RCI Metalworks are intended for off-road use only, should not be modified, and are for use only on the vehicle(s) specifically stated. RCI Metalworks makes no warranties express or implied, including of fitness for a particular purpose or merchantability. RCI Metalworks will not be liable for any damages arising out of the use or misuse of its products. It is the customers' responsibility to ensure the products are safely and properly attached to the vehicle, and all products should be installed by trained professionals. We strive to maintain extremely high-quality standards; however, all RCI Metalworks products are individually handcrafted, may vary slightly, and may contain minor imperfections. Due to the nature of raw aluminum, the material may have minor scratches and other blemishes caused by the manufacturing process, especially on the back side of product. RCI Metalworks is constantly seeking to improve its products and reserves the right to make changes to any product.