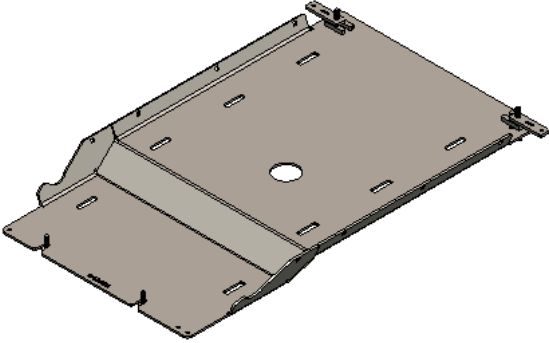


24+ Toyota Hybrid Transmission Skid Plate Install Guide

ITEM NO.	PART NUMBER	DESCRIPTION	QTY.
1	SM-00902	2024 Toyota Hybrid Transmission Skid Plate - Steel	1
2	HW-00125	3/8 TRANSMISSION SPACER	2
3	HW-00104	Mounting Plate #2 .25MS R2	2
4	HW-00025	M8-1.25 X 30MM HEX FLANGE BOLT	2
5	HW-00037	5/16 USS FLAT WASHER ZINC	2
6	HW-00162	M10 X 45 Flanged Bolt Partially Threaded	2
7	HW-00026	3/8 USS FLAT WASHER THRU HARD	2



UNLESS OTHERWISE SPECIFIED:	PROPRIETARY AND CONFIDENTIAL	NAME	DATE
DIMENSIONS ARE IN INCHES TOLERANCES: FRACTIONAL ± 0.010 ANGULAR: BEND ± 0.5 TWO PLACE DECIMAL ± 0.015 THREE PLACE DECIMAL ± 0.010	THE INFORMATION CONTAINED IN THIS DRAWING IS THE SOLE PROPERTY OF RCI Offroad. ANY REPRODUCTION IN PART OR AS A WHOLE WITHOUT THE WRITTEN PERMISSION OF RCI Offroad IS PROHIBITED.	DRAWN	NA
		Export Date	
		5/2/2025	
RCI OFFROAD TITLE: Toyota 24 Hybrid Transmission Skid Plate Install Guide BOM			
Item Number	Default	REV 1	
DO NOT SCALE DRAWING		SCALE: 1:20	WEIGHT: SHEET 1 OF 1

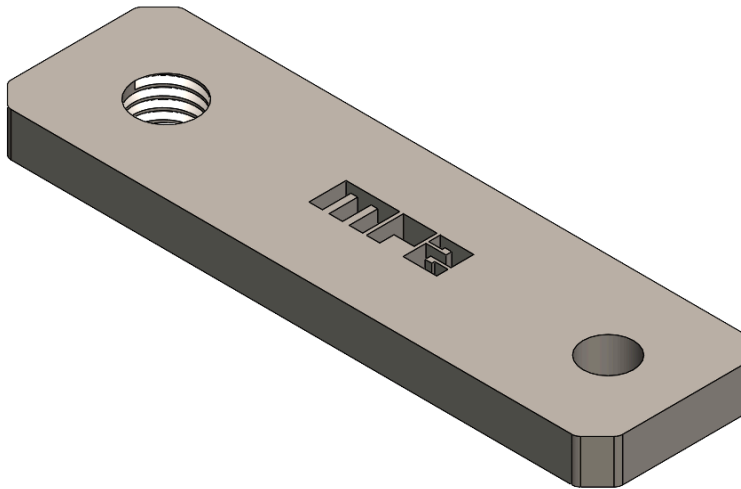
Figure 1: BOM



INSTALLATION STEPS:

****Use hand tools, impact wrenches may cause damage if over torqued.****

- 1) Begin by unpacking and removing all components and hardware. Please verify that all hardware and mounting components are present. Reference your original order invoice and verify all items are accounted for.
- 2) Insert the MP2 Mounting Plates into the rear vehicle crossmember. Align the threaded holes of the MP2 with the large holes in the vehicle crossmember.
 - a. Insert the MP2 plates into the crossmember from the slotted cutouts in the crossmember.



RCI OFFROAD 



- b. Align the threaded ends of the MP2s with the large holes in the rear crossmember.



- 3) Prepare front for installation.
 - a. If installing the 24+ Toyota Hybrid Transmission Skid Plate in conjunction with the 24+ Landcruiser Engine Skid Plate, loosen the engine skid plate mounting hardware so there is at least 1/4" gap between the rear of the engine skid plate and the vehicle crossmember.



- b. If installing the 24+ Toyota Hybrid Transmission Skid Plate without the 24+ Landcruiser Engine Skid Plate, loosely install a set of M8 bolts in the crossmember.
- 4) Slide the front mounting flange of the transmission skid plate between the vehicle crossmember and the engine skid plate or the M8 hardware.
- 5) Hold the skid plate assembly up to the vehicle frame and loosely install the included M10 hardware through the rear of the transmission skid plate and into the MP2 plates in the crossmember.

6) Finishing up.

- a. If installing the 24+ Landcruiser T-Case Skid Plate, proceed to the appropriate installation guide.
- b. Otherwise, slide the included 3/8" ("U" shaped) transmission spacers between the vehicle frame and the rear mounting face of the 24+ Toyota Hybrid Transmission Skid Plate and tighten all hardware.





Enjoy your new RCI protection!



Share your new install with us on social media!

We love seeing our products out in the wild!

www.rcimetalworks.com

sales@rcioffroad.com

970-797-3089



Disclaimer: The products sold by RCI Metalworks are intended for off-road use only, should not be modified, and are for use only on the vehicle(s) specifically stated. RCI Metalworks makes no warranties express or implied, including of fitness for a particular purpose or merchantability. RCI Metalworks will not be liable for any damages arising out of the use or misuse of its products. It is the customers' responsibility to ensure the products are safely and properly attached to the vehicle, and all products should be installed by trained professionals. We strive to maintain extremely high quality standards; however, all RCI Metalworks products are individually handcrafted, may vary slightly, and may contain minor imperfections. Due to the nature of raw aluminum, the material may have minor scratches and other blemishes caused by the manufacturing process, especially on the backside of products. RCI Metalworks is constantly seeking to improve its

RCI OFFROAD 