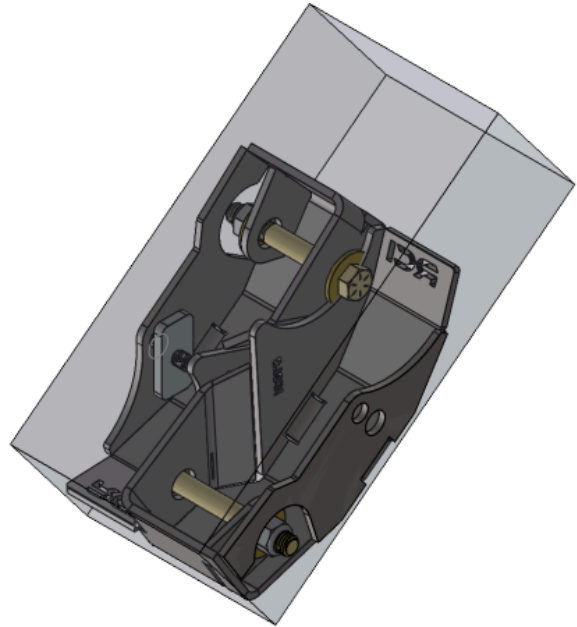


## RCI 15-22 Chevy Colorado Rear Shock Mount Skid Plate Installation Guide

ITEM NO.	PART NUMBER	DESCRIPTION	QTY.
1	SM-00992	15-22 Colorado Shock Skid - Body	2
3	HW-00152	Toyota .375 Track Nut	1
4	BX-00052	ULINE 12x6x4	1
5	HK-00064	15-22 Colorado Shock Skid Hardware Kit	1
5.1	HW-00022	1/2 USS FLAT WASHER THRU HARD	4
5.2	HW-00133	1/2-13 Nylock Nut	2
5.3	HW-00194	.5-13x3.75 Hex Bolt	2
5.4	HW-00064	3/8-16 X 1-1/8 HEX CAP SCREW	1
5.5	HW-00026	3/8 USS FLAT WASHER THRU HARD	1
5.6	HW-00029	3/8 SPLIT LOCK WASHER ZINC	1



UNLESS OTHERWISE SPECIFIED:	PROPRIETARY AND CONFIDENTIAL	NAME	DATE
DIMENSIONS ARE IN INCHES TOLERANCES: FRACTIONAL: ±0.010 ANGULAR: BEND ±0.5 TWO PLACE DECIMAL ±0.015 THREE PLACE DECIMAL ±0.010	THE INFORMATION CONTAINED IN THIS DRAWING IS THE SOLE PROPERTY OF RCI Offroad. ANY REPRODUCTION IN PART OR AS A WHOLE WITHOUT THE WRITTEN PERMISSION OF RCI Offroad IS PROHIBITED.	DRAWN KL	04/23/2025
RCI OFFROAD		Export Date	
TITLE:		4/23/2025	
Item Number FG-00988		REV 1	
DO NOT SCALE DRAWING		SCALE: 1:3	WEIGHT: SHEET 1 OF 11

COLORADO-15-  
SHOCKMOUNT - SHIP  
BOM

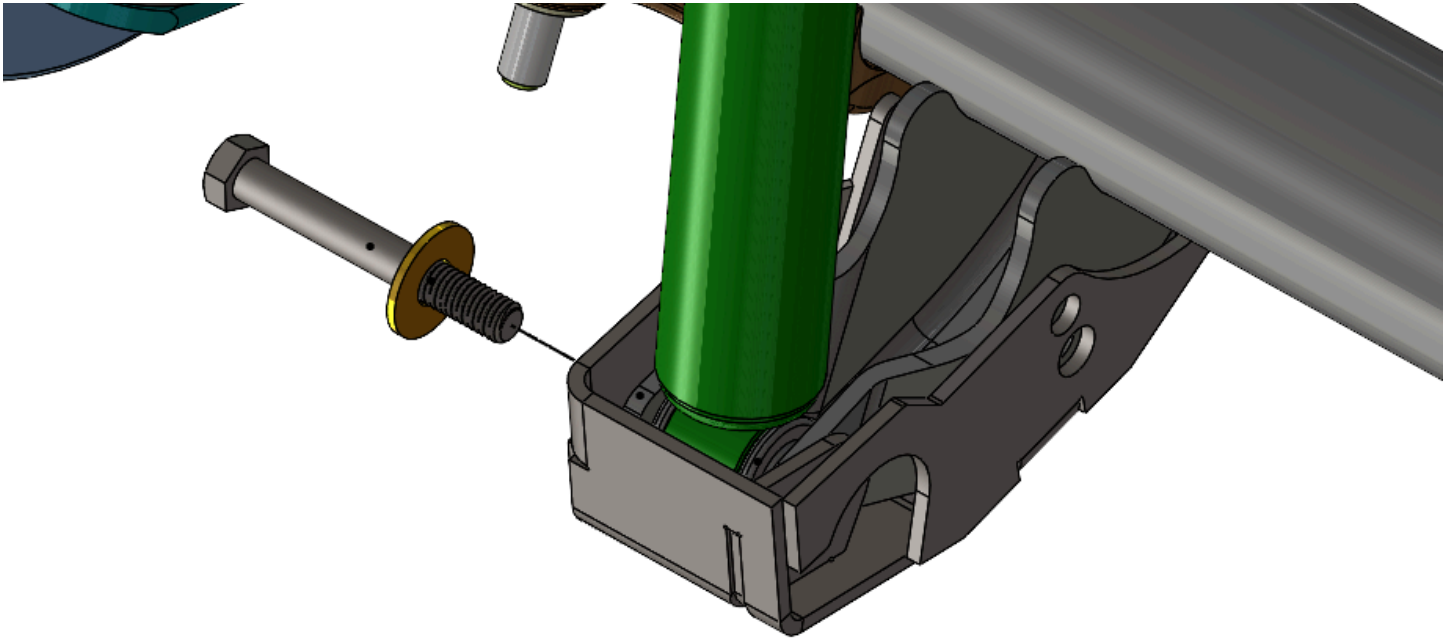
## INSTALLATION STEPS:

**\*\*Use hand tools, impact wrenches may cause damage if over torqued.**

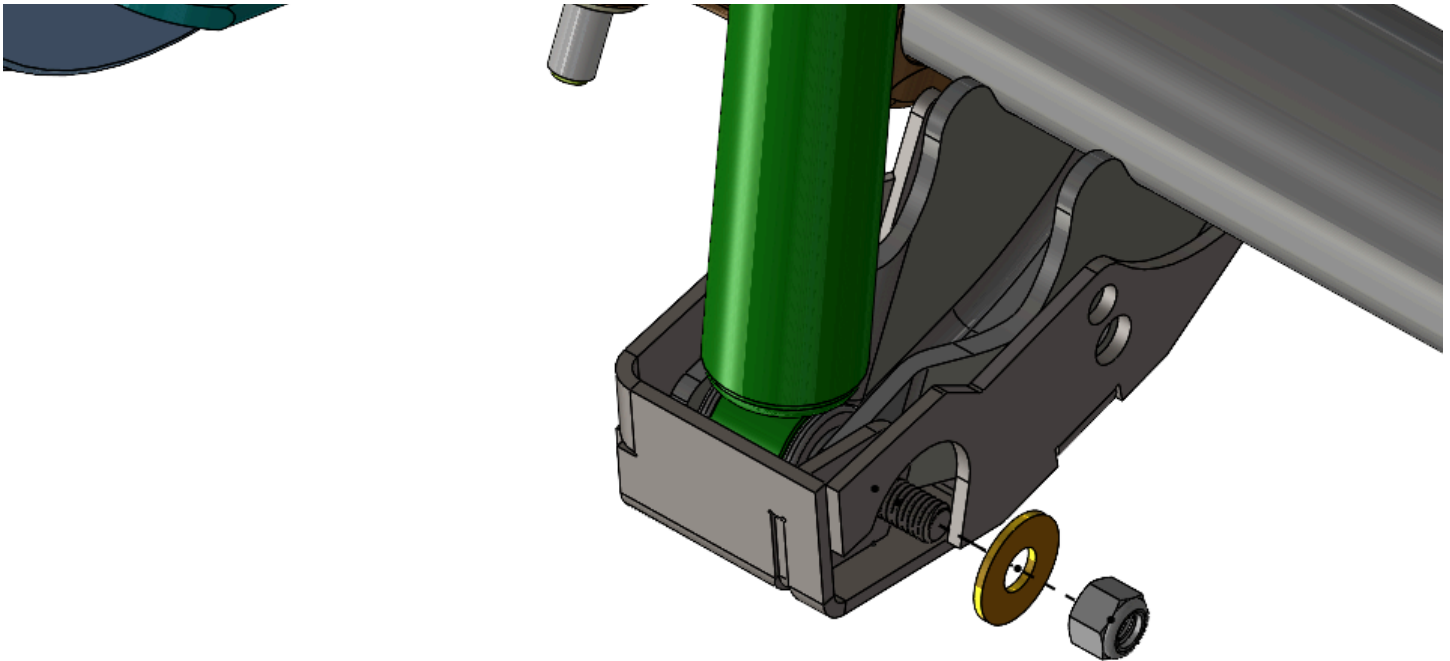
1. Begin by unpacking and removing all components and hardware. Please verify that all hardware, components, and mounting components are present. Please reference your original order invoice and verify all items are accounted for.
2. Prepare the rear shock mounts for install by removing the 1/2" bolts securing the shocks to the rear axle as well as the bolt securing the bracket to the face of the passenger side shock mount.



3. Starting with the passenger side shock mount, lift the RCI shock mount skid plate into position around the shock mount and pass the included 1/2x3.75" bolt and washer from the wheel side of the mount through the skid plate, shock mount, lower shock eyelet, then through the mount and skid plate again until the threads are exposed on the differential side of the shock mount/skid plate assembly.



4. Loosely install a washer and nut on the threaded end of the bolt from the previous step.

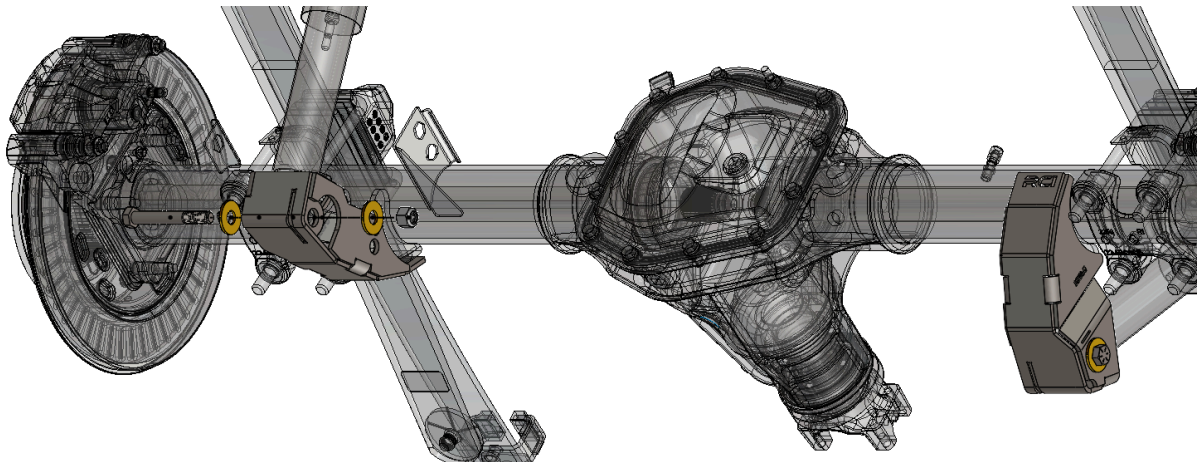




5. Align the upper hole in the face of the shock skid with the threaded hole in the shock mount and use the OEM bolt to reinstall the bracket on the outside of the shock skid plate.

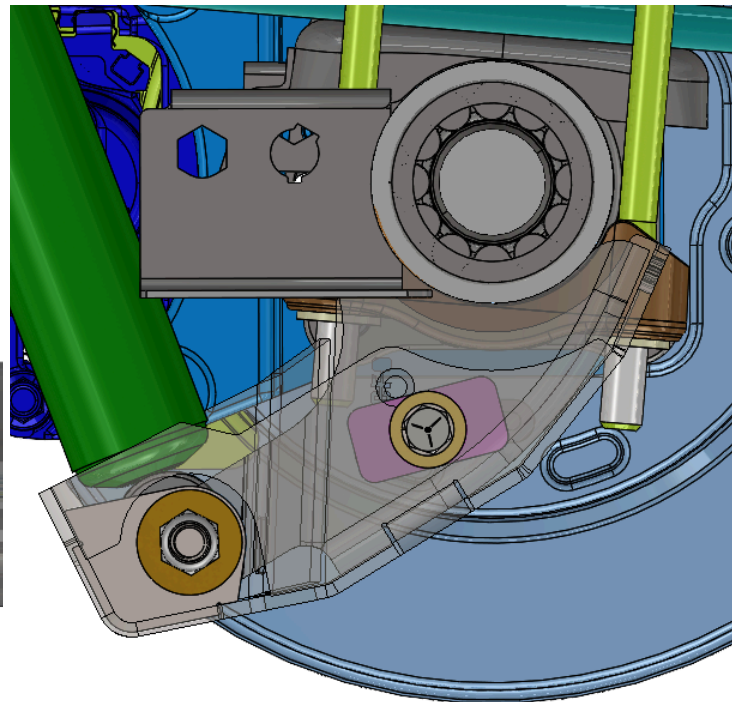
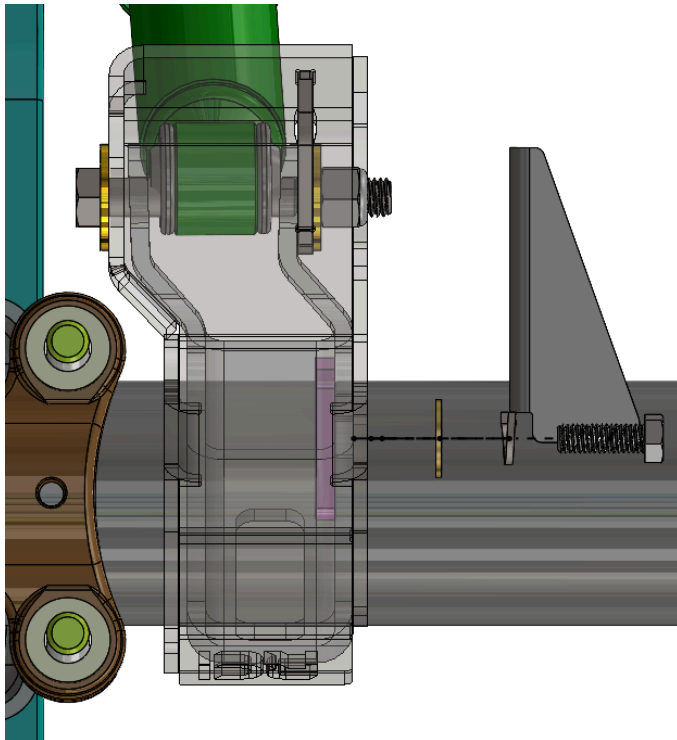
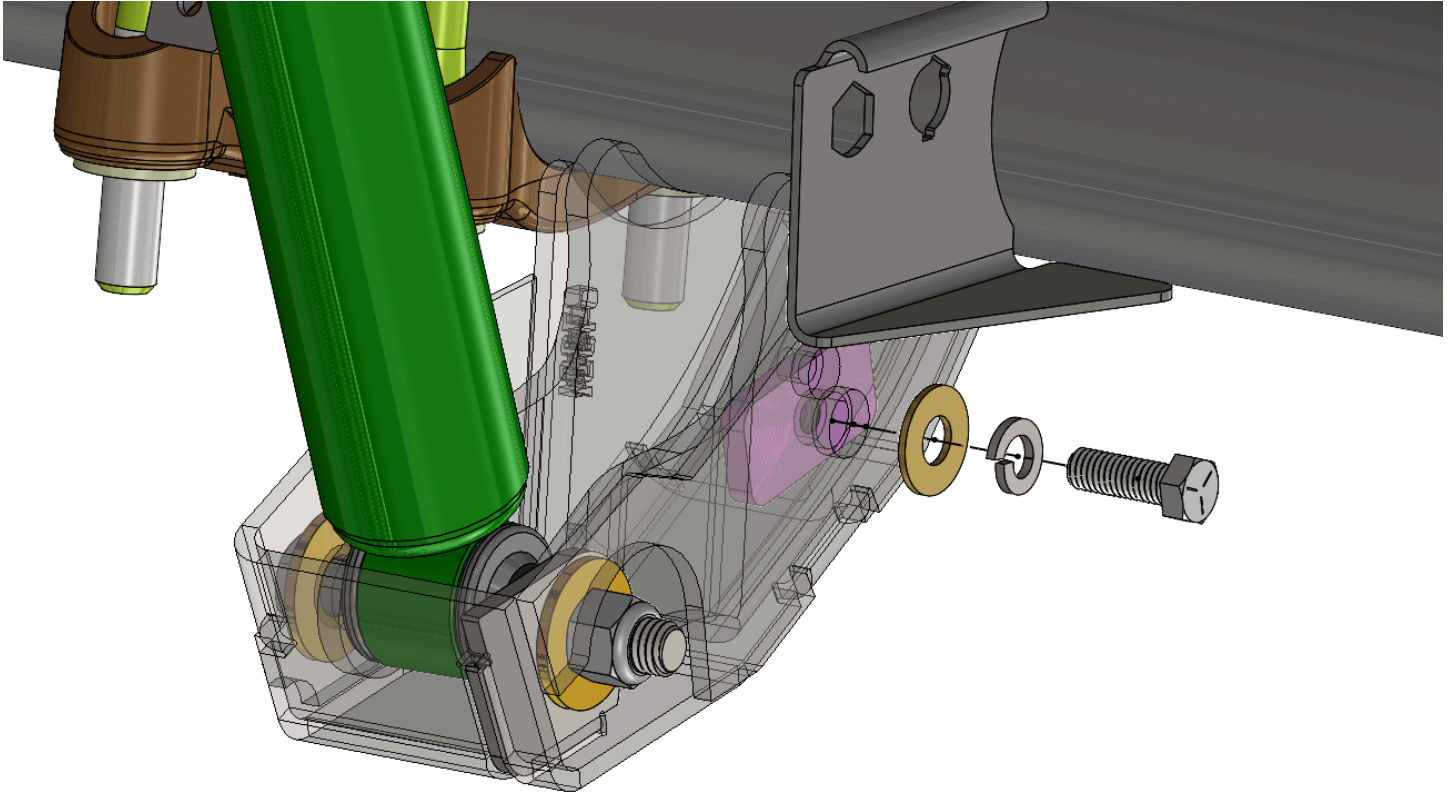


6. Repeat the process of installing the driver side shock mount using the included 1/2x3.75 bolt, washers, and nut.





7. Insert the included tapped plate (shown in pink) into the vehicle shock mount and thread the included 3/8" hardware into the tapped plate to secure the driver-side shock mount skid plate to the shock mount.



8. Tighten all hardware and torque the shock mounting hardware to factory specifications.



**Enjoy your new RCI protection!**



**Share your new install with us on social media!**

**We love seeing our products out in the wild!**

[www.rcimetalworks.com](http://www.rcimetalworks.com)

[sales@rcioffroad.com](mailto:sales@rcioffroad.com)

**970-797-3089**



REV: 1.0/00/0000

Disclaimer: The products sold by RCI Metalworks are intended for off-road use only, should not be modified, and are for use only on the vehicle(s) specifically stated.

RCI Metalworks makes no warranties express or implied, including of fitness for a particular purpose or merchantability. RCI Metalworks will not be liable for any damages arising out of the use or misuse of its products. It is the customers' responsibility to ensure the products are safely and properly attached to the vehicle, and all products should be installed by trained professionals. We strive to maintain extremely high-quality standards; however, all RCI Metalworks products are individually handcrafted, may vary slightly, and may contain minor imperfections. Due to the nature of raw aluminum, the material may have minor scratches and other blemishes caused by the manufacturing process, especially on the back side of product. RCI Metalworks is constantly seeking to improve its products and reserves the right to make changes to any product.