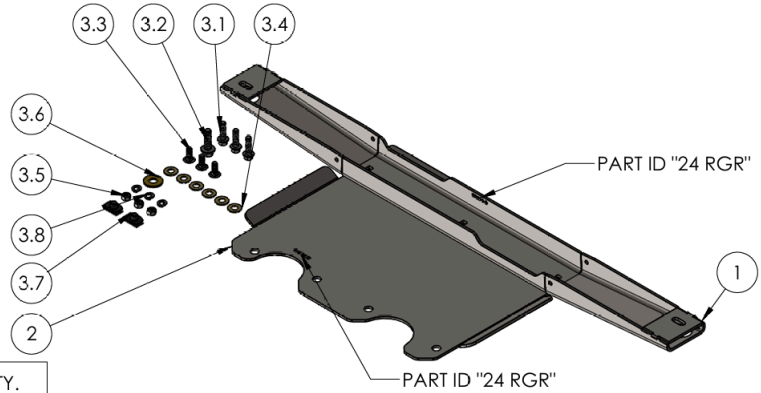


## RCI 24+ RANGER T-CASE SKID INSTALLATION GUIDE



ITEM NO.	DESCRIPTION	QTY.
1	.188MS 24 Ranger T-Case Cross Member	1
2	.188MS 24 Ranger T-Case Skid	1
3	24 Ranger T-Case Hardware Kit	1
3.1	M10-1.5 X 35MM HEX FLANGE BOLT	3
3.2	M12-1.75 X 40MM HEX FLANGE	1
3.3	3/8-16 X 1 CARRIAGE BOLT GR-5	3
3.4	3/8 USS FLAT WASHER THRU HARD	6
3.5	3/8-16 FIN HEX NUT GR-5 ZINC	3
3.6	1/2 USS FLAT WASHER THRU HARD	1
3.7	5558B1M: M10-1.5 U-NUT .90MM-	2
3.8	3/8 SPLIT LOCK WASHER ZINC	3

**\*\*Use hand tools, impact wrenches may cause damage if over torqued.\*\***

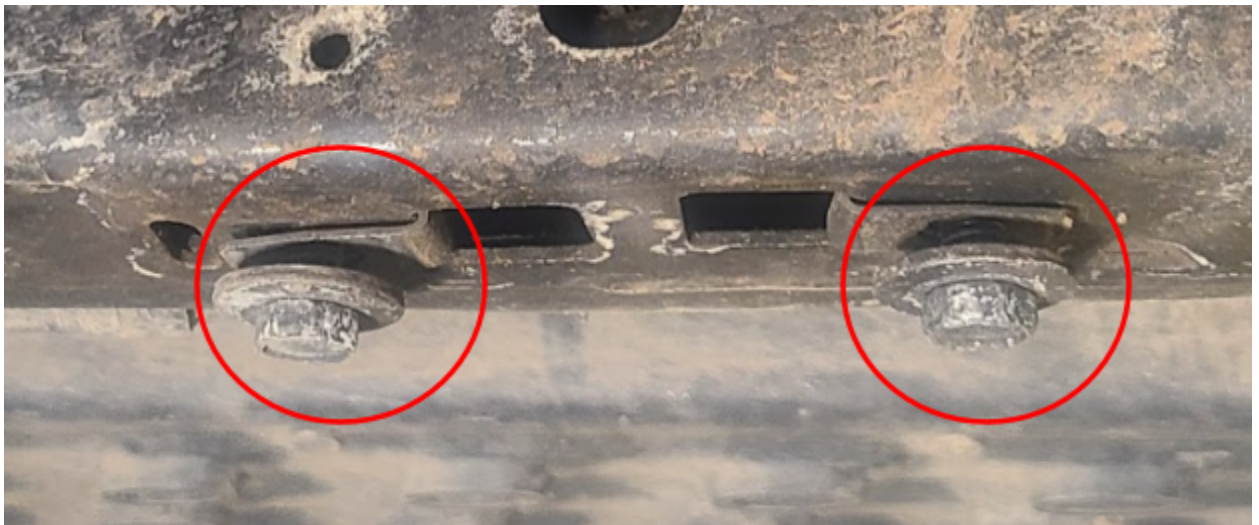
## **Preparation**

- 1) If you have sliders, install them first.
- 2) If you have a transmission skid, install it after the T-Case.
- 3) Remove the OEM T-Case skid by removing the bolts shown below.



*Figure 1: OEM Hardware Removal*

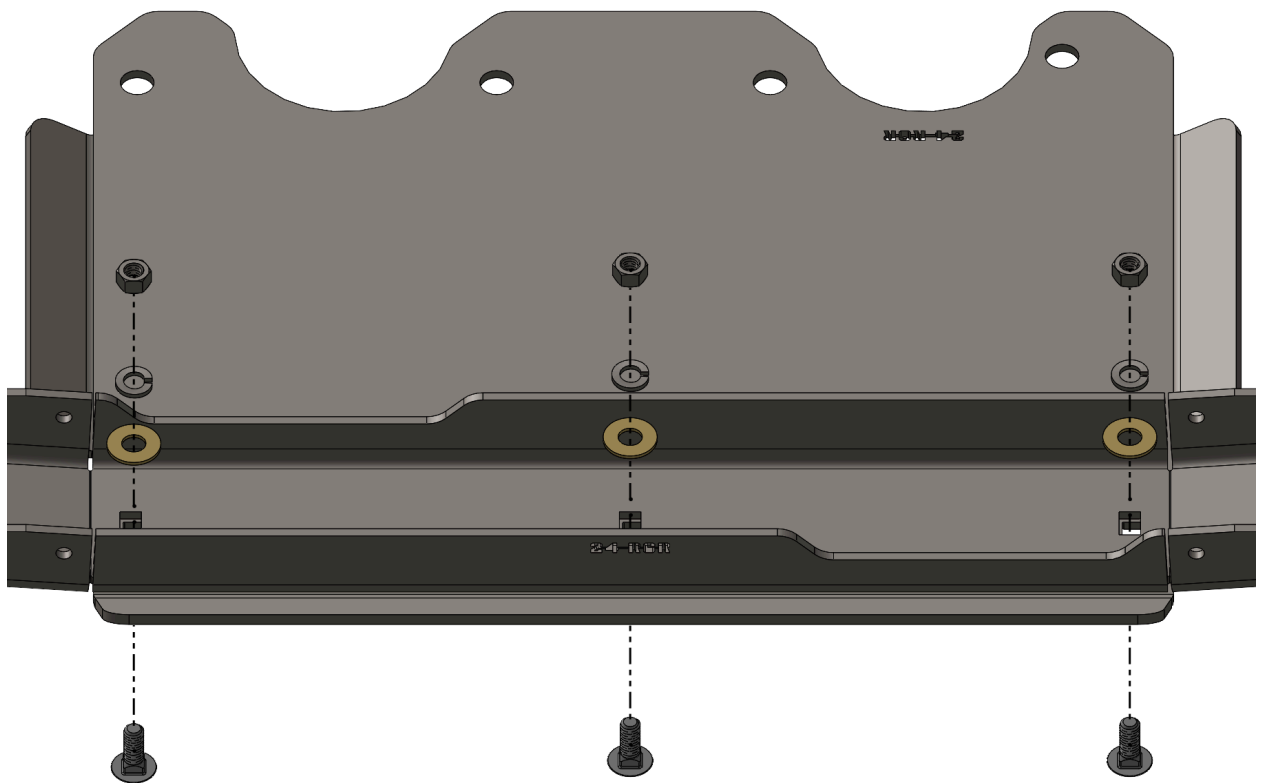
- 4) Remove the OEM hardware and speed clips.



*Figure 2: OEM Speed Clip Removal*

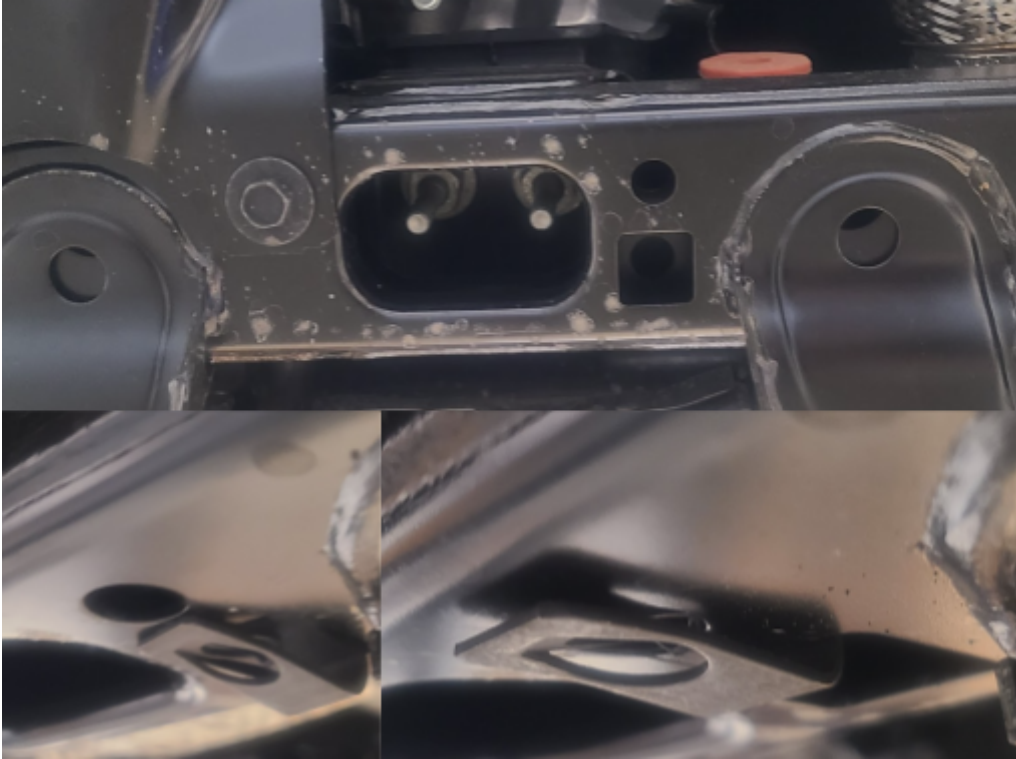
## Installation

- 5) Begin by unpacking and removing all components and hardware. Please verify that all hardware and mounting components are present. Reference your original order invoice and verify all items are accounted for.
- 6) Collect 3x  $\frac{3}{8}$ " Carriage bolts, 3x  $\frac{3}{8}$ " Washers, 3x  $\frac{3}{8}$ " Lock Washers, and 3x  $\frac{3}{8}$ -16 Nuts. Collect the Crossmember and T-Case Skid. Assemble as shown. Leave nuts hand tight. They will be adjusted in a later step.



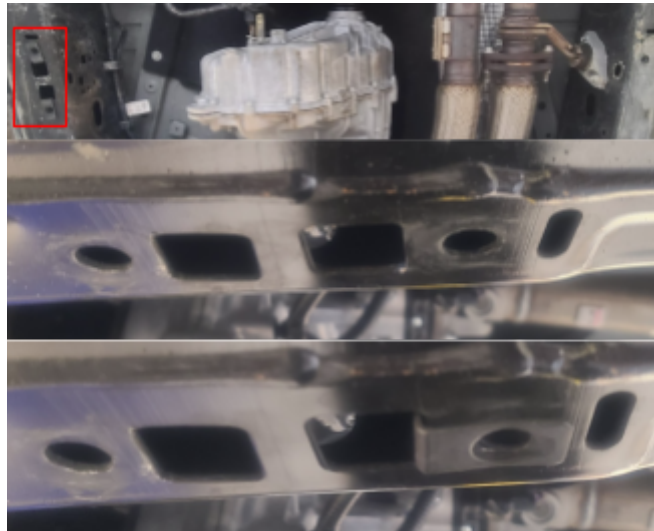
*Figure 3: T-Case Skid Assembly*

- 7) Collect 1x M10 speed clip. Insert the speed clip into the frame as shown



*Figure 4: Center Speed Clip Install*

- 8) Collect 1x M10 speed clip. Insert the speed clip into the frame as shown



*Figure 5: Side Speed Clip Install*

- 9) Collect 1x M12 Bolt, 1x 1/2" Washer, 1x M10 bolt, and 1x 3/8" washer. Thread into holes at approximate locations and leave finger tight.



*Figure 6: Cross Member Hardware Install*

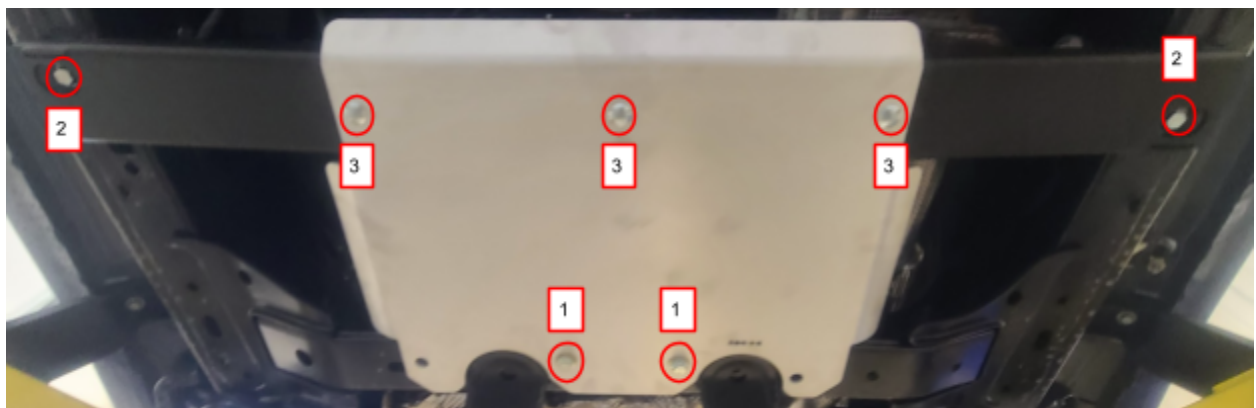
- 10) Collect the remaining M10 bolts (2) and the remaining 3/8" washers (2). Thread them into the two center holes shown.

- a) Ensure the outside holes align with their respective frame holes.



*Figure 7: Center Bolts*

- 11) Tighten the hardware in the order shown.



*Figure 8: Hardware Tightening*

**Enjoy your new RCI protection!**





**Share your new install with us on social media!**

**We love seeing our products out in the wild!**



**[www.rcimetalworks.com](http://www.rcimetalworks.com)**

**[sales@rcioffroad.com](mailto:sales@rcioffroad.com)**

**970-797-3089**

REV: 1 | 9/29/2022

Disclaimer: The products sold by RCI Metalworks are intended for off-road use only, should not be modified, and are for use only on the vehicle(s) specifically stated. RCI Metalworks makes no warranties express or implied, including of fitness for a particular purpose or merchantability. RCI Metalworks will not be liable for any damages arising out of the use or misuse of its products. It is the customers' responsibility to ensure the products are safely and properly attached to the vehicle, and all products should be installed by trained professionals. We strive to maintain extremely high quality standards; however, all RCI Metalworks products are individually handcrafted, may vary slightly, and may contain minor imperfections. Due to the nature of raw aluminum, the material may have minor scratches and other blemishes caused by the manufacturing process, especially on the back side of product. RCI Metalworks is constantly seeking to improve its products and reserves the right to make changes to any product.

