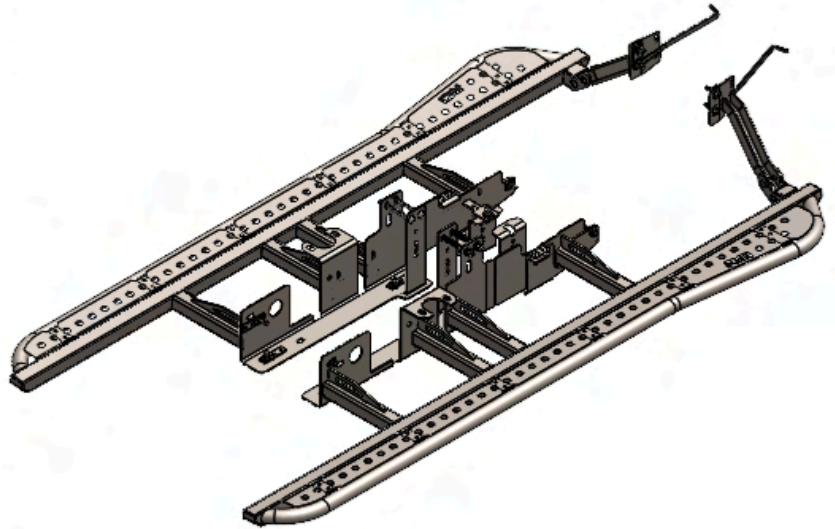


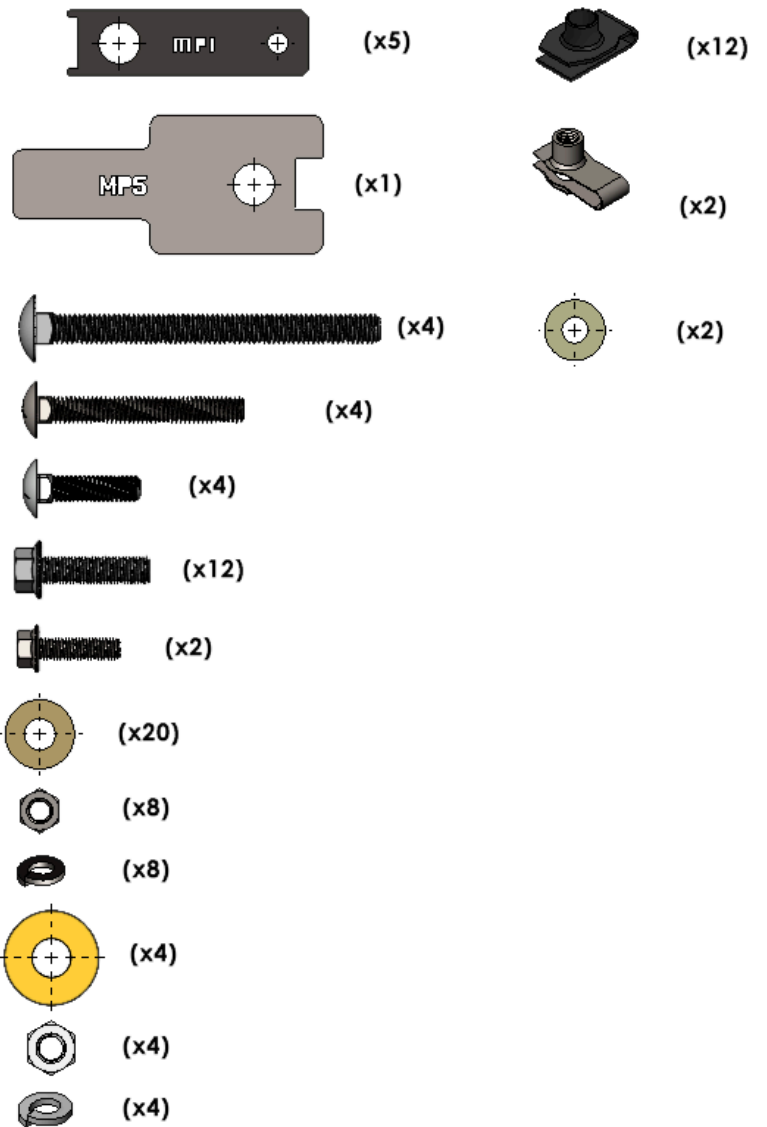
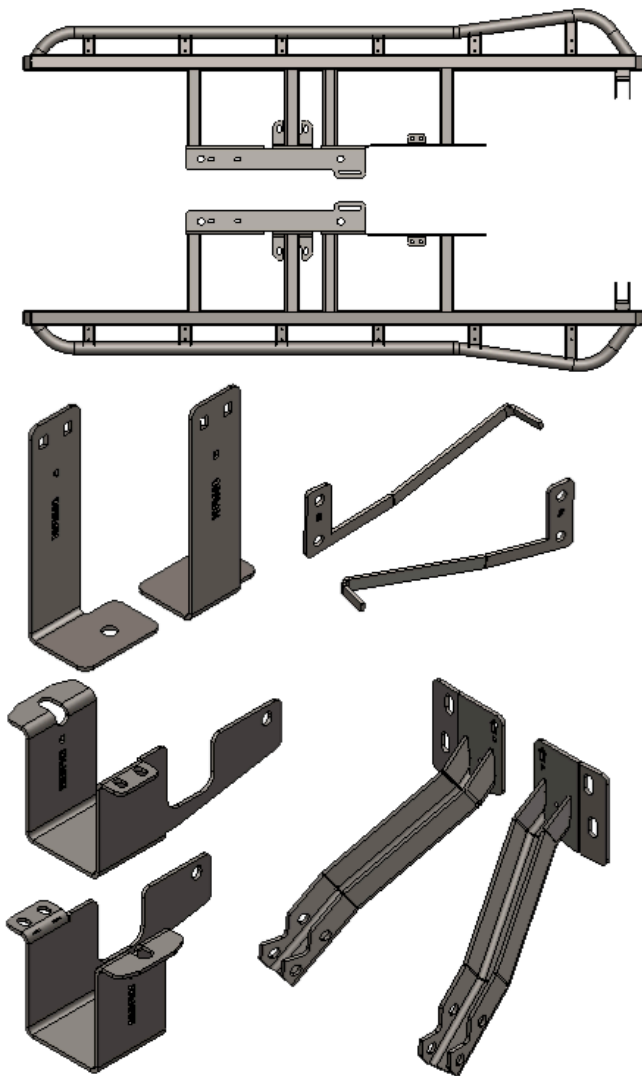
RCI 2019 F150 Super Crew Short Bed Slider Installation Guide

ITEM NO.	PART NUMBER	DESCRIPTION	QTY.
1	SM-00954 (Driver)	19 F150 SCSB Slider Driver	1
2	SM-00955 (Passenger)	19 F150 SCSB Slider Passenger	1
3	SM-00958 (Driver)	19 F150 SCSB Back Clamp Driver	1
4	SM-00959 (Passenger)	19 F150 SCSB Back Clamp Passenger	1
5	SM-00956 (Driver)	19 F150 SCSB Rear Support Bracket Driver	1
6	SM-00957 (Passenger)	19 F150 SCSB Rear Support Bracket Passenger	1
7	SM-00960 (Driver)	19 F150 SCSB Rear Leg Driver	1
8	SM-00961 (Passenger)	19 F150 SCSB Rear Leg Passenger	1
9	SM-00917 (Driver)	19 F150 SCSB Bolt Leg Bracket Driver	1
10	SM-00918 (Passenger)	19 F150 SCSB Bolt Leg Bracket Passenger	1
11	SM-00024	.075 MS 07-21 Tundra Tread Plate Driver	1
12	SM-00025	.075 MS 07-21 Tundra Tread Plate Passenger	1
13	HW-00002	Mounting Plate #1 .135MS	5
14	HW-00193	Mounting Plate #5 .188MS	1
15	HK-00167	KIT_19 F150 SCSB Slider	1
16	HK-00035	6 Tread Mount Hardware Kit	1



RCI OFFROAD		
TITLE:		
19+ F150 Supercrew Slider Install Guide		
Item Number		REV
Default		2
DO NOT SCALE DRAWING	SCALE: 1:50 WEIGHT:	SHEET 1 OF 2

BOM



BOM

INSTALLATION STEPS:

****Use hand tools, impact wrenches may cause damage if over torqued****

- 1) Begin by unpacking and removing all components and hardware. Please verify that all hardware and mounting components are present. Reference your original order invoice and verify all items are accounted for.
 - a. **PLEASE NOTE:** Sliders purchased with an RCI Black Powder Coat should be inspected thoroughly for any possible damage during shipment. Once the sliders have been mounted to the vehicle, RCI will no longer be able to assist with powder coat damage that may have occurred in transit.
 - b. Sliders purchased in Bare Metal should be cleaned with Acetone and covered in a rust preventative (powder coat, paint, bed liner, etc.) before mounting to the vehicle.
- 2) **PLEASE NOTE:** Some F-150 model trucks have a fuel control box located on the frame of the passenger side of the vehicles. If your F-150 does have the fuel control box, please reference **Appendix A** before continuing with the installation. Only the box depicted below needs to be relocated. If the box is further forward than the one below, then it does not need to be relocated.



Fuel Control Box

- 3) Remove all OEM rock rails or side steps from the truck.
- 4) If applicable, unclip the wiring depicted below on the driver side of the vehicle frame.



Remove Wiring Clip

- 5) If applicable, remove the factory transfer case skid plate. This skid can be reinstalled below the slider once installation is complete.
 - a. NOTE: OEM speed clips can be reused for slider installation. The hardware kit includes replacement speed clips if OEM hardware needs to be replaced.



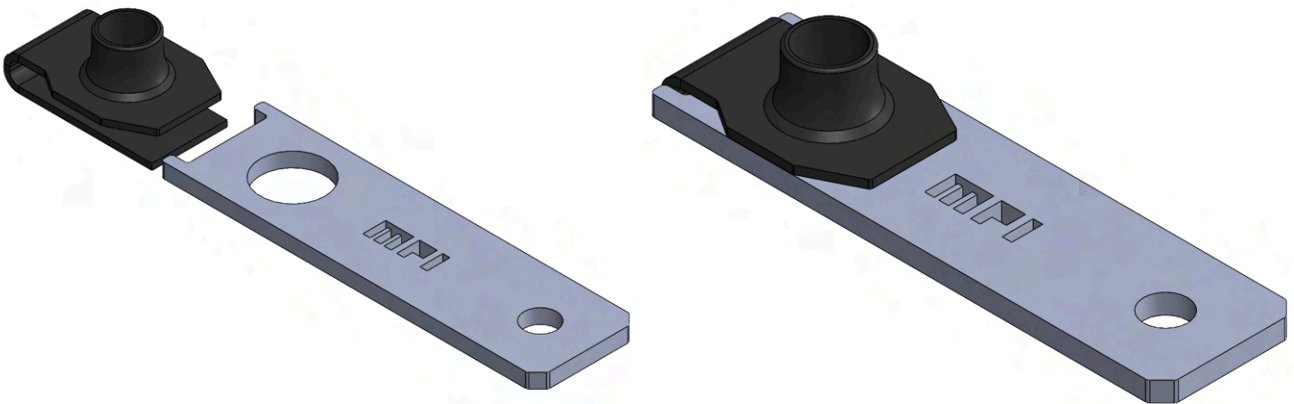
OEM Transfer Case Skid to be Removed.

- 6) On the Driver and Passenger side of the vehicle, remove the two (2) center body mount nuts and save for reinstall later.



Body Mount Nuts to be Removed

- 7) Next, collect five (5) Mounting Plate #1 and five (5) M10 Speed Clips. Install the speed clips to the mounting plates as depicted below and save them for later use.



Correct Installation of Speed Clip on MP1

- 8) Install a M10 speed clip into each side of the vehicle frame as depicted below. The hole will be towards the rear of the frame.



M10 Speed Clip Locations

- 9) Starting on the Driver side, collect one (1) of the assembled mounting plates and one (1) M10 x 40mm Bolt. Install the mount plate into the opening on the bottom of the frame. Loosely thread in the M10 bolt to keep the plate in place.



Preinstallation of Lower M10 Bolt

- 10) Install the two (2) M8 speed clips in the bottom front of the frame



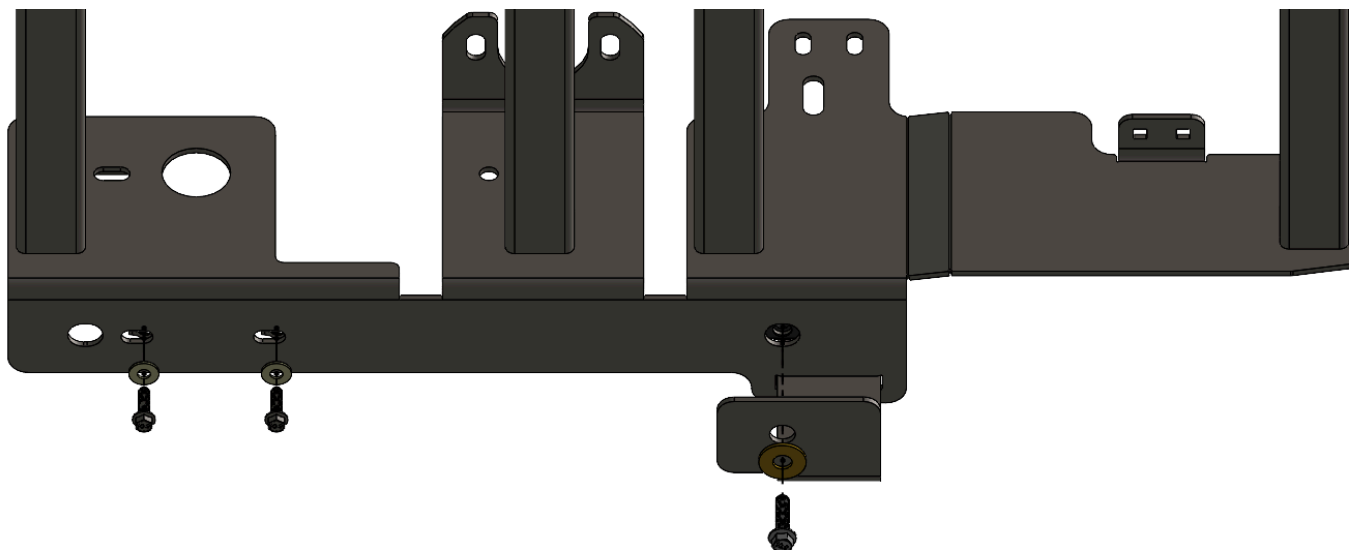
M8 Speed Clip Locations

- 11) Lift the Driver Side Rock Slider into position. Begin threading the OEM body mount nuts to help secure the slider. The use of a floor jack, stool, or a helping hand is recommended until fasteners are installed.
- NOTE:** all hardware needs to be loosely tightened until all hardware is installed.

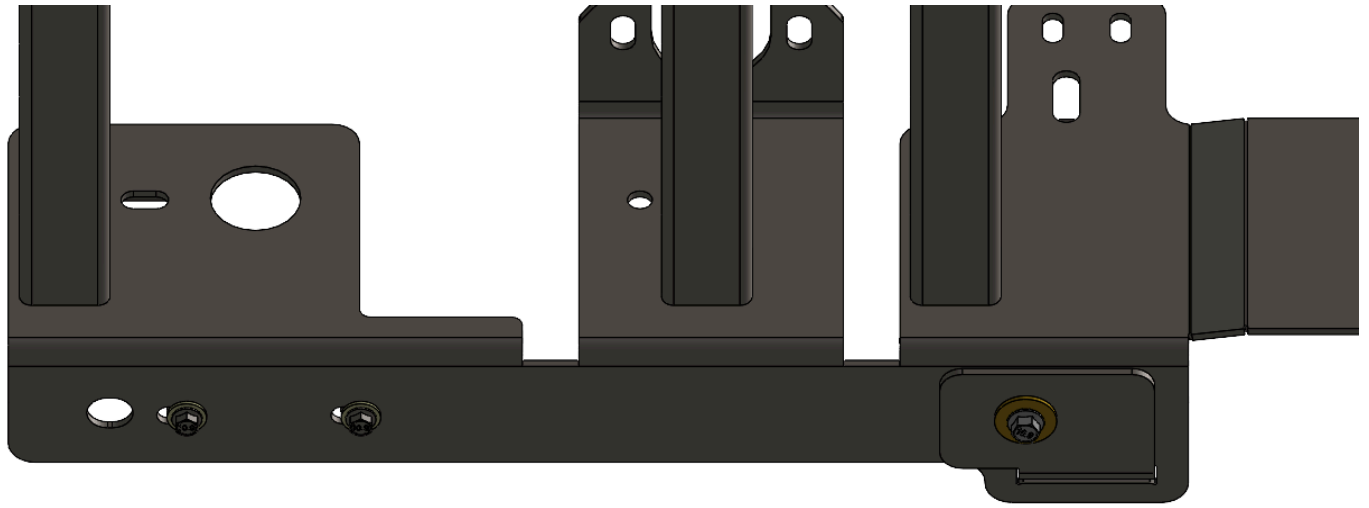


Use Body Mount Bolts to Hold Slider in Place

- 12) Next collect two (2) M8 Bolts with two (2) 5/16" Washers and install them in the two front most mounting locations on the underside of the frame.
- Remove the rearmost M10 bolt and install the driver side back clamp along with a 1/2" washer as depicted below. .

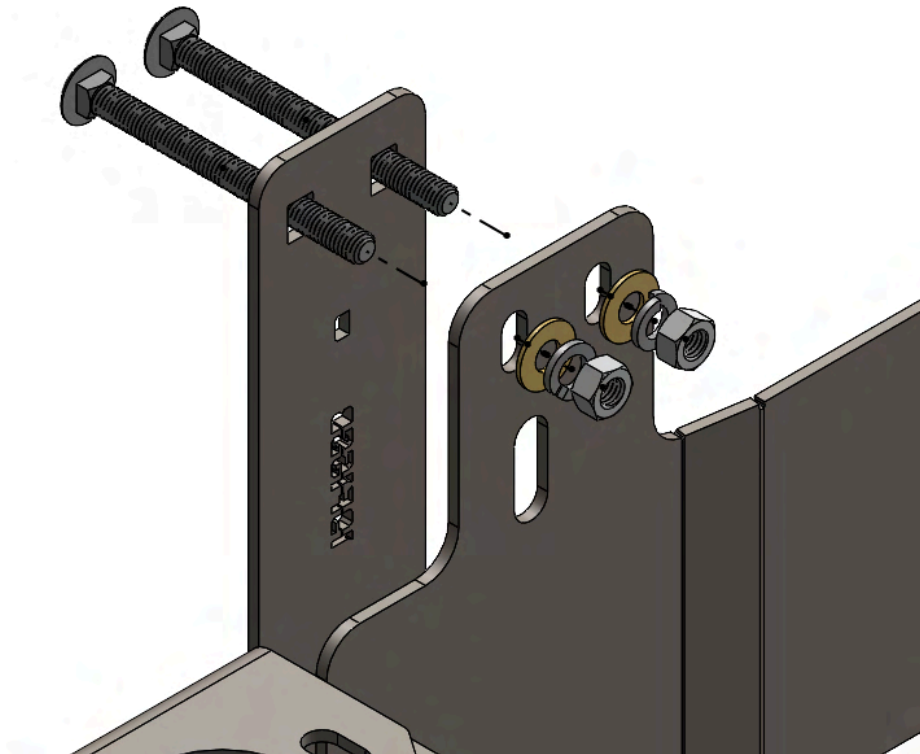


Installation Reference

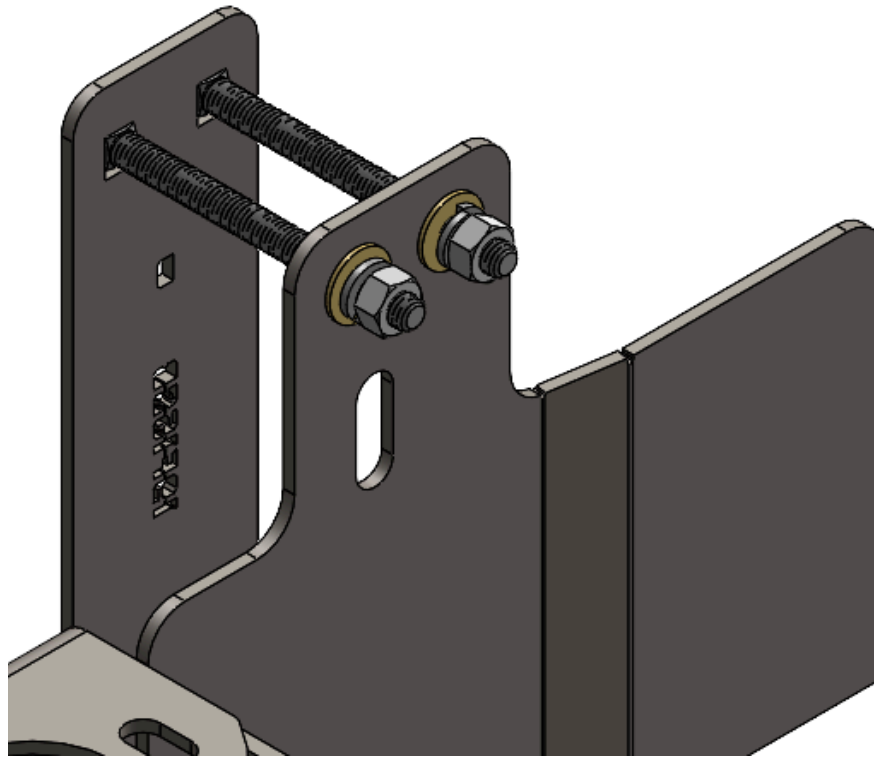


Installation Reference

- 13) Collect two (2) 7/16" x 5" carriage bolts with the corresponding washers, lock washers and nuts. Install the carriage bolts through the square holes on the back clamp and feed them through the holes on the frame plate. Reference the figure below.

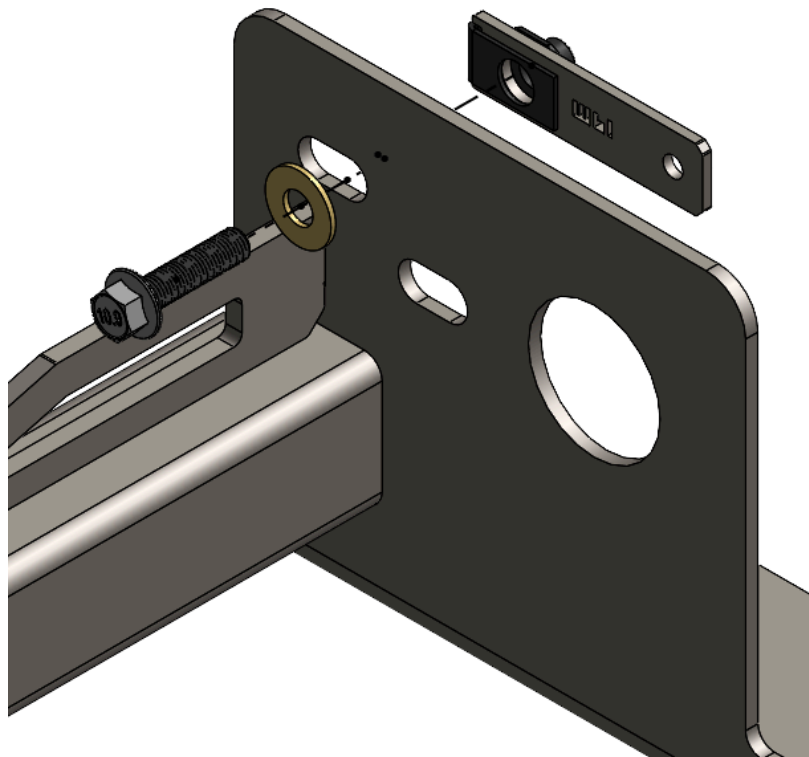


Installation Reference



Installation Reference

- 14) Collect an assembled Mounting Plate #1, M10 bolt and a $\frac{3}{8}$ " washer. Install the plate through the circular opening the front of the slider frame plate. Line the plate up with the mounting hole on the slider and install the bolt.



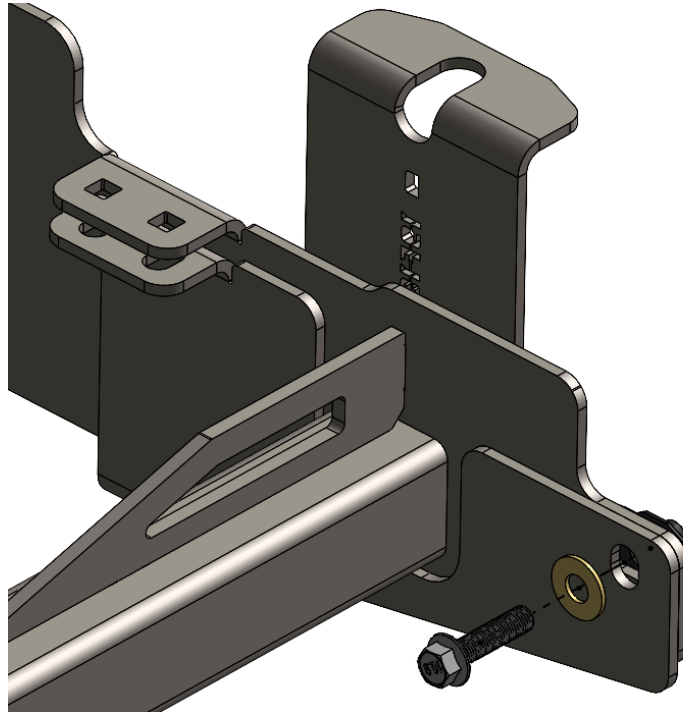
Installation Reference

- 15) Next, use a jack stand or something similar to support the front of the fuel tank. Remove the front bolt securing the fuel tank strap and let the strap swing out of the way.



Fuel Tank Strap Bolt to remove

- 16) Collect the driver side rear support bracket and slide it into place around the frame. Install a M10 bolt and $\frac{3}{8}$ " washer in the rear most hole securing the bracket.



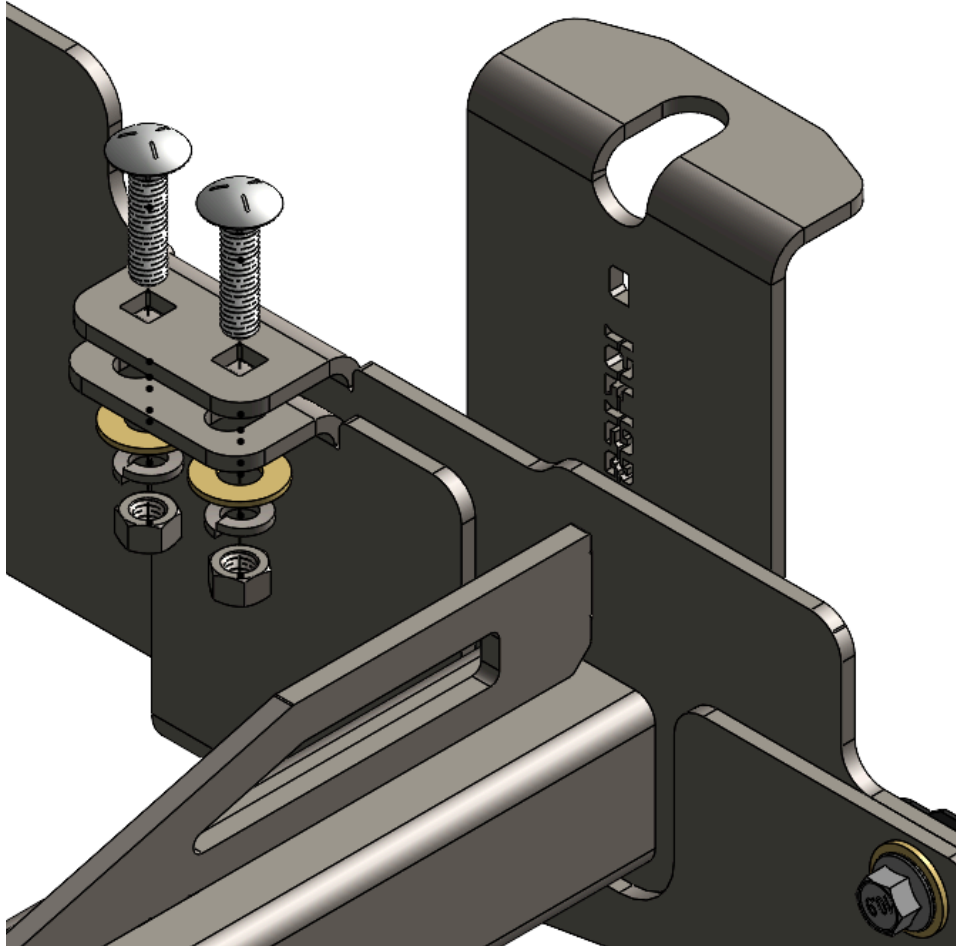
Installation Reference

- 17) Reinstall the fuel tank strap and bolt over the rear support bracket.



Reinstallation of Fuel Strap

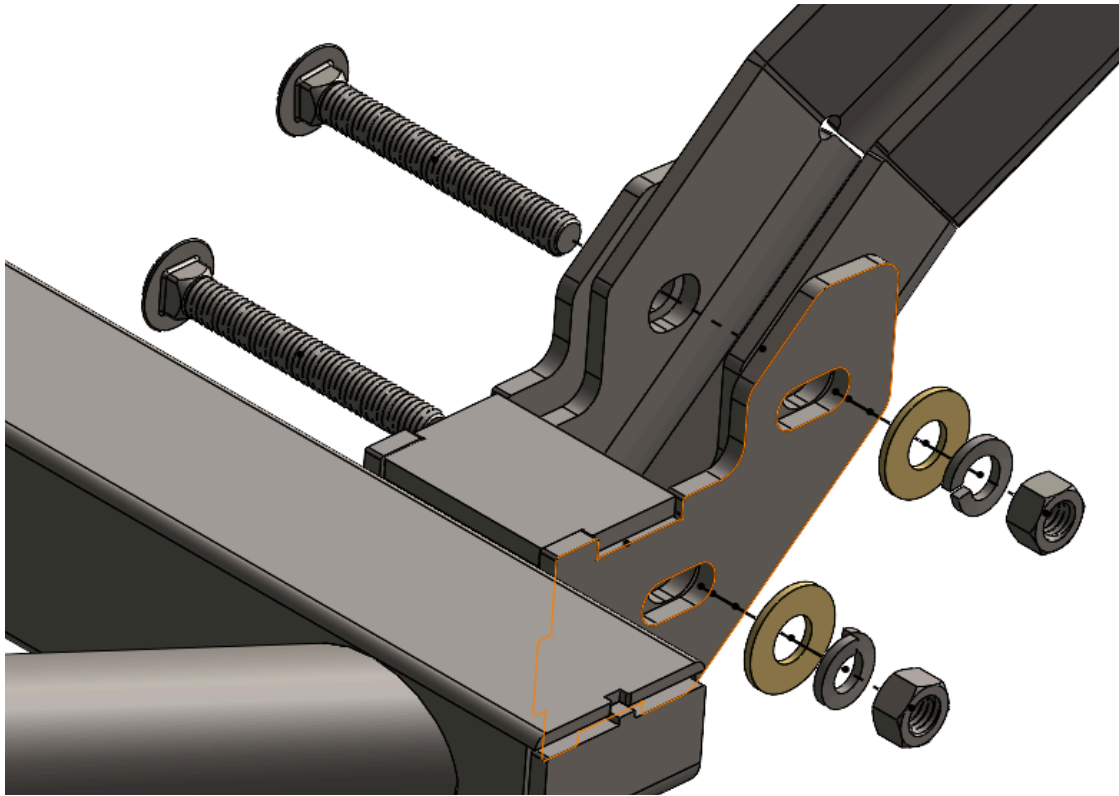
- 18) Collect two (2) $\frac{3}{8}$ " x 1.5" carriage bolts with the corresponding washers, lock washers and nuts. Install the carriage bolts through the square holes on the frame plate and through the slots on the outside of the rear support bracket.



Installation Reference

- 19) Collect the driver side rear bolt on leg (Engraved with a "D") along with two (2) $\frac{3}{8}$ " x 3" carriage bolts with the corresponding washers, lock washers and nuts.

- 20) Feed the rear bolt on leg in between the tabs on the rear of the slider main rail. Loosely secure it to the slider with the 3/8" carriage bolts, washers, lock washers and nuts as depicted below.



Installation Reference

- 21) Collect the provided driver side bolt leg bracket and install an M10 speed clip as depicted below.



Installation Reference

22) With the bolt on leg loosely installed, collect two (2) M10 bolts and two (2) 3/8" washers.

23) Fish the bracket into the frame as depicted below and align the speed clips with the square holes on the truck.



Passenger Side Depicted, Mirror for Driver Side

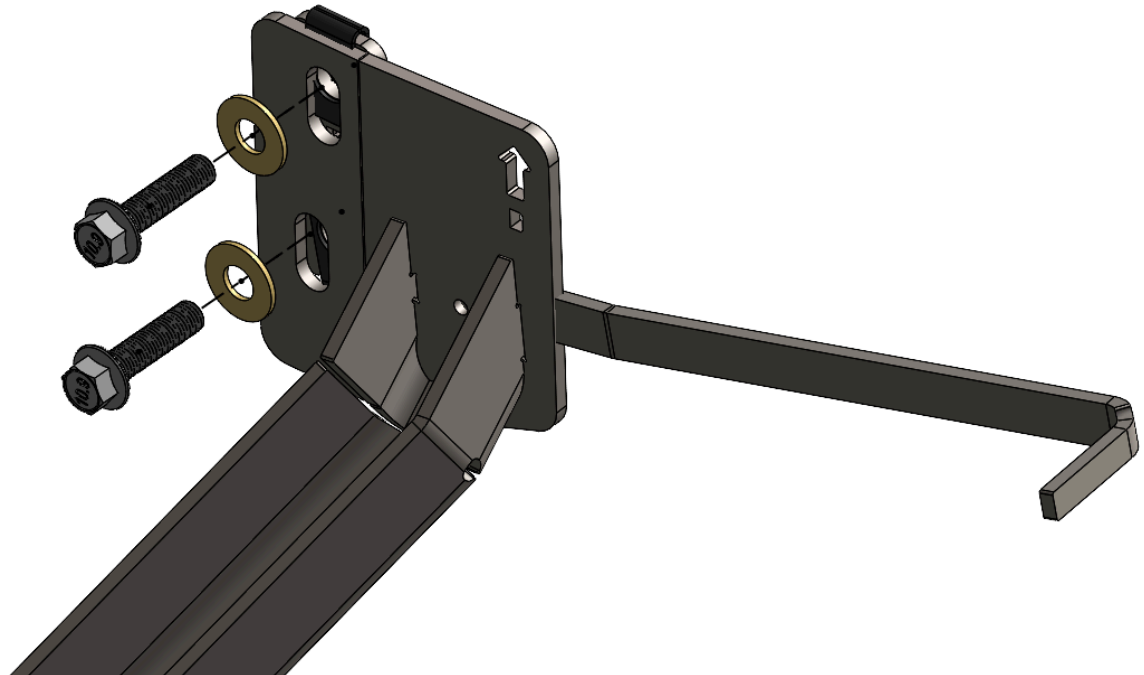


Passenger Side Depicted, Mirror for Driver Side



Passenger Side Depicted, Mirror for Driver Side

- 24) Install the two M10 bolts with 3/8" washers into the small frame plate to secure the leg to the truck. Reference the image below.
- NOTE:** it is recommended to hold the tail of the bolt plate with a set of pliers to assist in leverage to align the late properly.



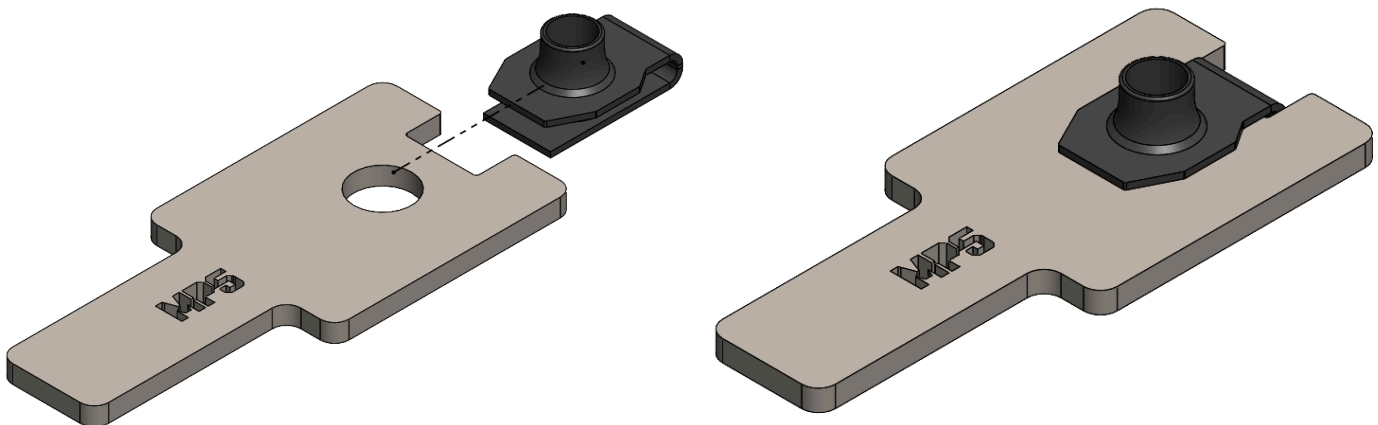
Installation Reference

- 25) Double check that all hardware is properly installed. Go through and fully tighten all hardware on the driver side slider.
- 26) For the passenger side rock slider collect two assembled mounting plate #1's and M10 bolts and install them in the holes on the bottom of the frame.



Mounting Plate #1 Install Locations

- 27) Repeat steps 11-14.
- 28) Collect the Mounting Plate #5 and install a M10 speed clip as depicted below.

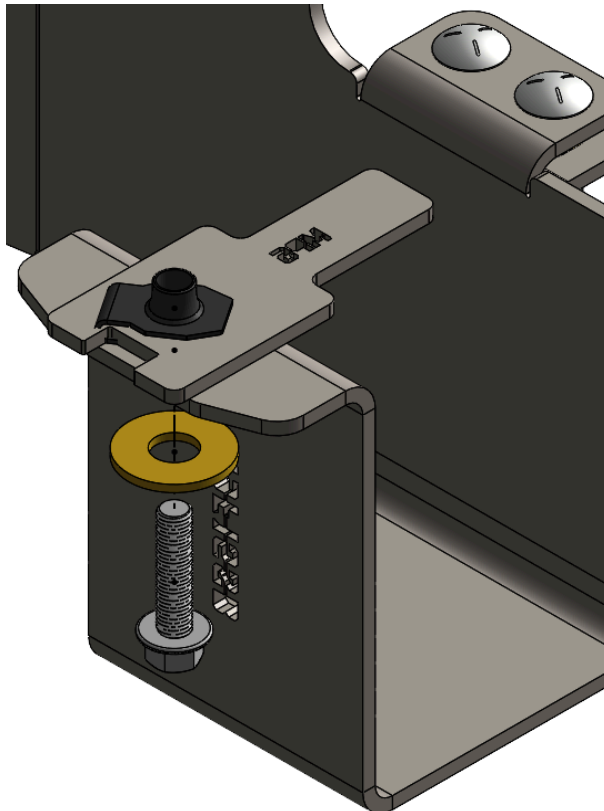


Installation Reference

- 29) Install the mounting plate through the square crossmember from the outside of the frame and align it with the slotted hole on the rear support bracket. Install a M10 bolt and 1/2" washer to secure the inside of the bracket. Reference the figure below.



Correct Passenger Side Rear Bracket Orientation

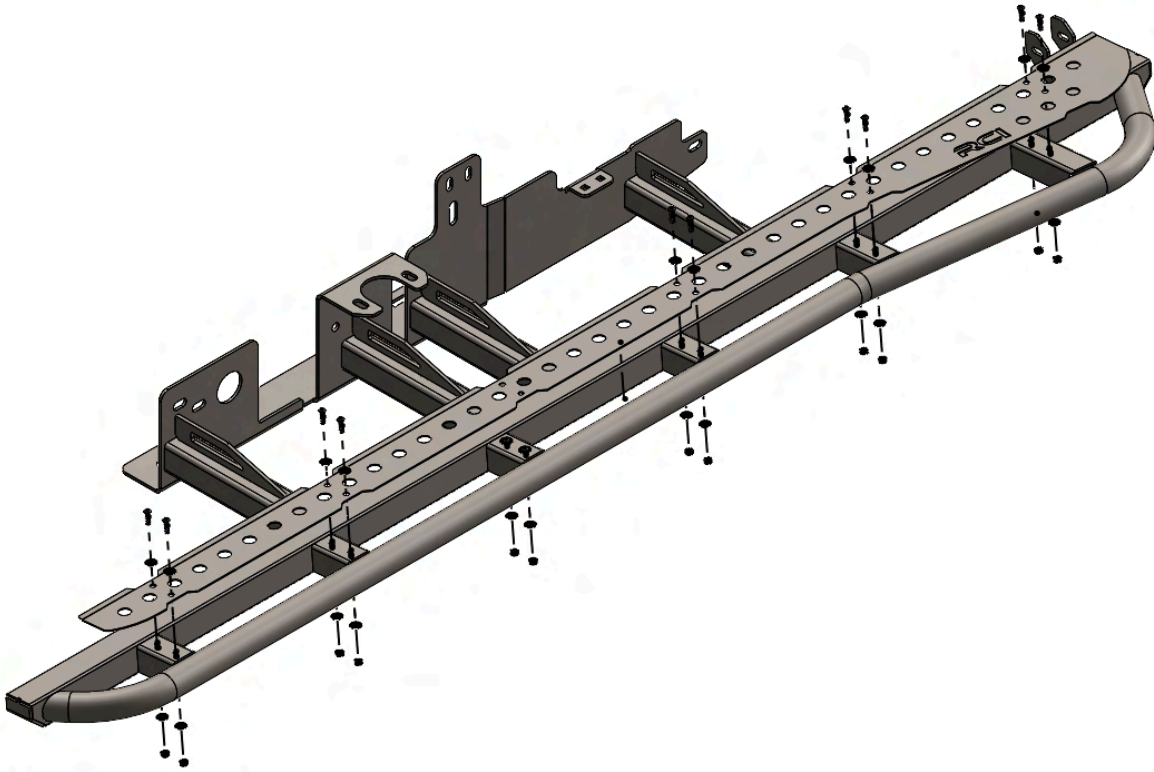


Installation Reference

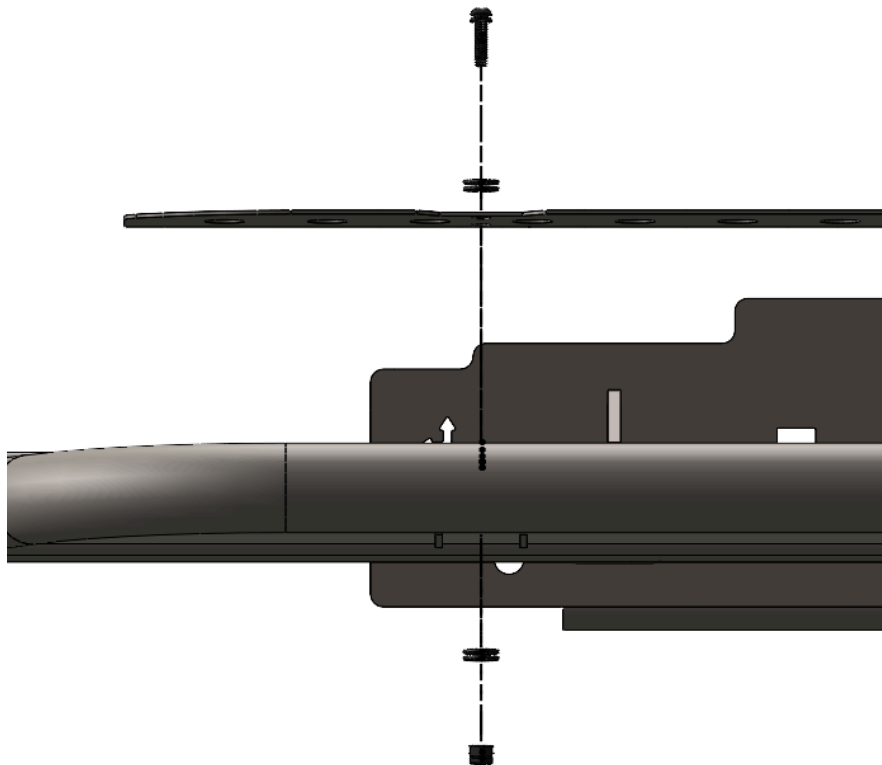
30) Repeat steps 16-24.

31) Double check that all hardware is properly installed. Go through and fully tighten all hardware on the passenger side slider.

- 32) If installing tread plates, collect the appropriate side tread plate and install them with the provided 1/4-20 button head screws with 1/4" washers and 1/4-20 keps nuts.



Tread plate installation.



Hardware orientation.



Enjoy your new RCI protection!



Share your new install with us on social media!

We love seeing our products out in the wild!

www.rcimetalworks.com

sales@rcioffroad.com

970-797-3089



Disclaimer: The products sold by RCI Metalworks are intended for off-road use only, should not be modified, and are for use only on the vehicle(s) specifically stated. RCI Metalworks makes no warranties express or implied, including of fitness for a particular purpose or merchantability. RCI Metalworks will not be liable for any damages arising out of the use or misuse of its products. It is the customers' responsibility to ensure the products are safely and properly attached to the vehicle, and all products should be installed by trained professionals. We strive to maintain extremely high quality standards; however, all RCI Metalworks products are individually handcrafted, may vary slightly, and may contain minor imperfections. Due to the nature of raw aluminum, the material may have minor scratches and other blemishes caused by the manufacturing process, especially on the back side of product. RCI Metalworks is constantly seeking to improve its

APPENDIX A:

Fuel Control Box Relocation Instructions

- 1) Begin by removing the protective cover from the fuel control box.



Protective Cover to Remove

- 2) With the cover removed, unbolt the fuel control unit, and remove the threaded studs from the frame.
- 3) Reinstall the threaded studs towards the front of the frame in the 3 slots depicted below.



Slots for Threaded Stud Reinstallation

- 4) Reinstall fuel control unit and the protective cover in the new location.



Correct Relocation of Fuel Control Box