



Disclaimer:

The products sold by RCI Metalworks are intended for off-road use only, should not be modified, and are for use only on the vehicle(s) specifically stated. RCI Metalworks makes no warranties express or implied, including of fitness for a particular purpose or merchantability. RCI Metalworks will not be liable for any damages arising out of the use or misuse of its products. It is the customers' responsibility to ensure the products are safely and properly attached to the vehicle, and all products should be installed by trained professionals. We strive to maintain extremely high-quality standards; however, all RCI Metalworks products are individually handcrafted, may vary slightly, and may contain minor imperfections. Due to the nature of raw aluminum, the material may have minor scratches and other blemishes caused by the manufacturing process, especially on the back side of the product. RCI Metalworks is constantly seeking to improve its products and reserves the right to make changes to any product.

Installation of an RCI bumper requires removal of factory-installed components such as crash bars and foam impact absorbers. These components are designed for vehicle safety and impact absorption, and their removal may negatively impact occupant protection in a crash. RCI is not responsible for the removal of these components, and the owner/installer assumes all risks associated with their removal and any resulting consequences. It is the owner/installer's sole responsibility to understand the implications of removing these components before proceeding with installation. The installation of this RCI bumper, improper installation of this RCI bumper, and use or misuse of this RCI bumper with other components or failure to use it in conjunction with other components, could result in or cause serious personal injury, property damage or death.

RCI bumpers are not crash-tested and are intended for off-road use only. Vehicle owners are responsible for testing and recalibrating any affected sensors after bumper installation. While RCI may conduct preliminary sensor functionality checks during product development, this does not constitute testing to Original Equipment Manufacturer (OEM) specifications. RCI is not responsible and does not accept liability, for breakage or failure of parts as a result of rugged off-road use or reckless and/or improper installation. Modifications to your vehicle are done at your own risk and RCI does not accept liability or responsibility arising from damage caused by installing parts or doing modifications.

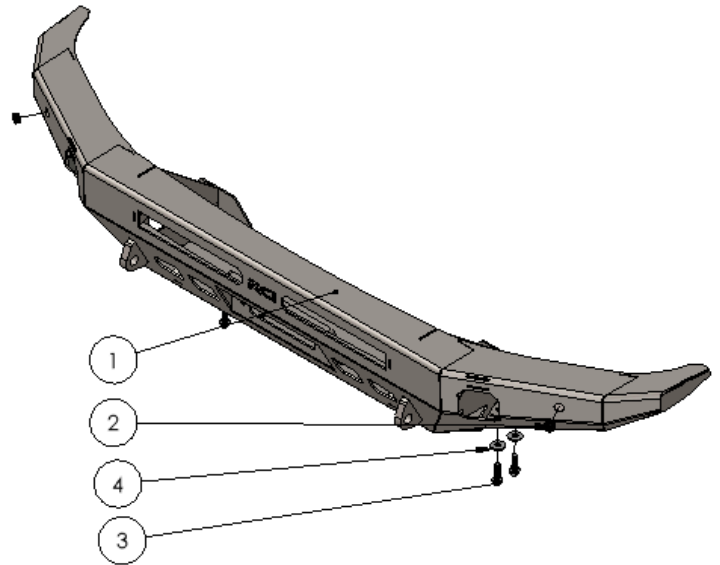
RCI performs off-road testing on its bumpers, including winch pulls, static and dynamic recovery pulls, and general off-road use. However, RCI is not liable for any damages arising from the use or misuse of its products. Customers are responsible for ensuring products are safely and properly attached to their vehicle, and professional installation is strongly recommended. After installing any off-road product, customers should test and recalibrate all safety sensors to ensure proper functionality. Do not rely on any safety sensor functionality until this verification is complete.

RCI Offroad bumpers with receiver hitches are not load rated. Using a receiver hitch for towing or other heavy-duty tasks is not recommended unless explicitly stated by the manufacturer. The bumper and receiver hitch are intended for off-road recovery use and not designed for sustained towing or load-bearing applications. Any misuse, such as towing or overloading, may result in bumper failure, vehicle damage, or personal injury. RCI is not responsible for any damages or injuries resulting from the use of the bumper with a receiver hitch beyond its intended purpose.

If an RCI product is purchased by a third party, such as a dealer, wholesaler, or installer, it is the third party's responsibility to inform the end customer of this disclaimer.

RCI 14-21 Toyota Tundra - Front Bumper Install Guide

| ITEM NO. | PART NUMBER | DESCRIPTION | QTY. |
|----------|-------------|--|------|
| 1 | SM-00443 | 14-21 Tundra Front Bumper | 1 |
| 2 | HW-00058 | Toyota Bumper Panel Plugs | 2 |
| 3 | HW-00057 | M12 x1.25 x40mm Flanged Hex Bolt | 4 |
| 4 | HW-00022 | 1/2" Washer | 4 |
| 5 | HW-00060 | 07-21 Tundra Power Steering Relocation Bracket | 2 |
| 6 | HW-00067 | 5/16 x 3/4 Carriage Bolt | 2 |
| 7 | HW-00037 | 5/16 USS FLAT WASHER ZINC | 2 |
| 8 | HW-00062 | 5/16-18 Nylock Nut | 2 |
| 9 | HW-00028 | Full Moon Spacer | 4 |



| UNLESS OTHERWISE SPECIFIED: | PROPRIETARY AND CONFIDENTIAL | NAME | DATE |
|--|--|-------------|---------------------------|
| DIMENSIONS ARE IN INCHES TOLERANCES: FRACTIONAL ± 0.010 ANGULAR: BEND ± 0.5 TWO PLACE DECIMAL ± 0.015 THREE PLACE DECIMAL ± 0.010 | THE INFORMATION CONTAINED IN THIS DRAWING IS THE SOLE PROPERTY OF RCI Offroad. ANY REPRODUCTION IN PART OR AS A WHOLE WITHOUT THE WRITTEN PERMISSION OF RCI Offroad IS PROHIBITED. | DRAWN NA | Export Date 11/20/2023 |
| RCI OFFROAD | | | |
| TITLE: 14-21 Tundra Front Bumper Install Guide | | | |
| Item Number Hardware | | REV 1 | |
| DO NOT SCALE DRAWING | SCALE: 1:48 | WEIGHT: | SHEET 1 OF 1 |

Figure 1:BOM

INSTALLATION STEPS:



****Use hand tools, impact wrenches may cause damage if over torqued.****

- 1) Begin by unpacking and removing all components and hardware. Please verify that all hardware and mounting components are present. Reference your original order invoice and verify all items are accounted for.
- 2) Remove the plastic trim on the inner fenders of the vehicle.
 - a. Remove the screws and clips holding the liner to the bumper and remove the liner to access the fog light and parking sensor wiring.



Figure 2

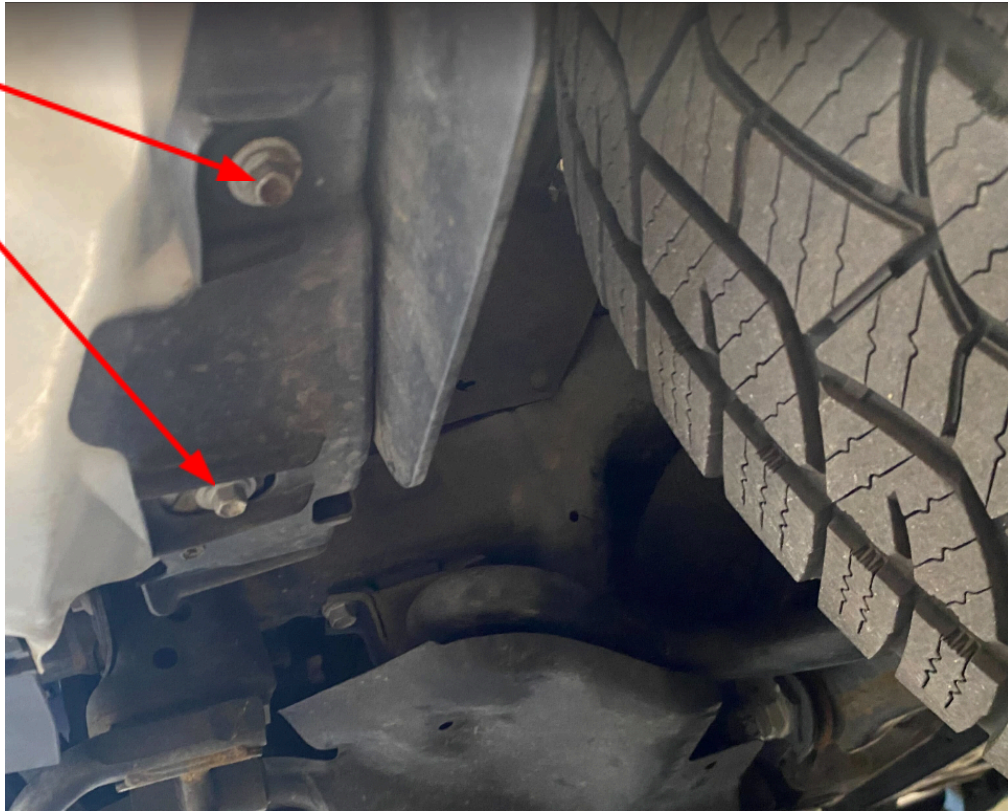
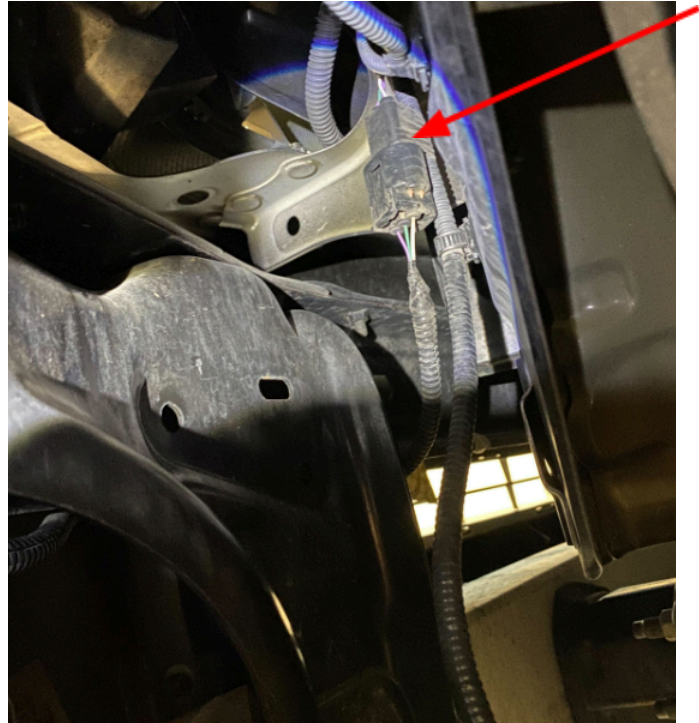
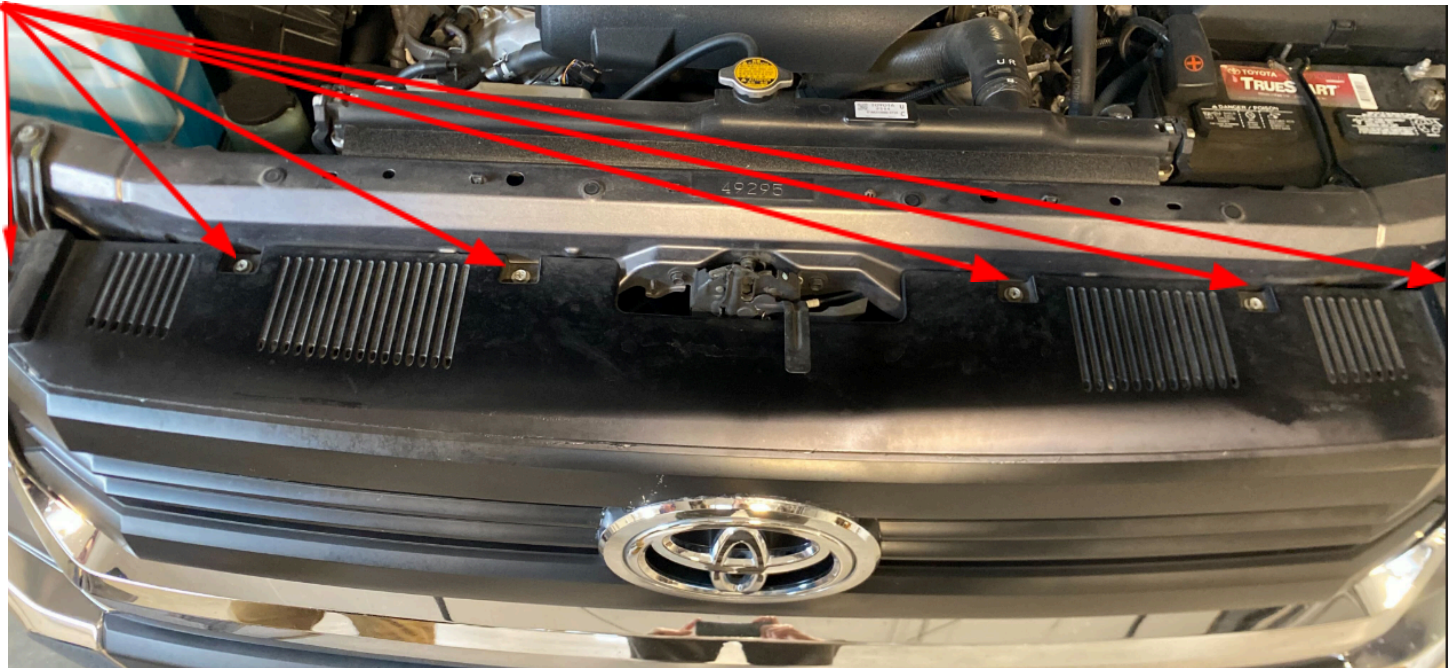


Figure 3

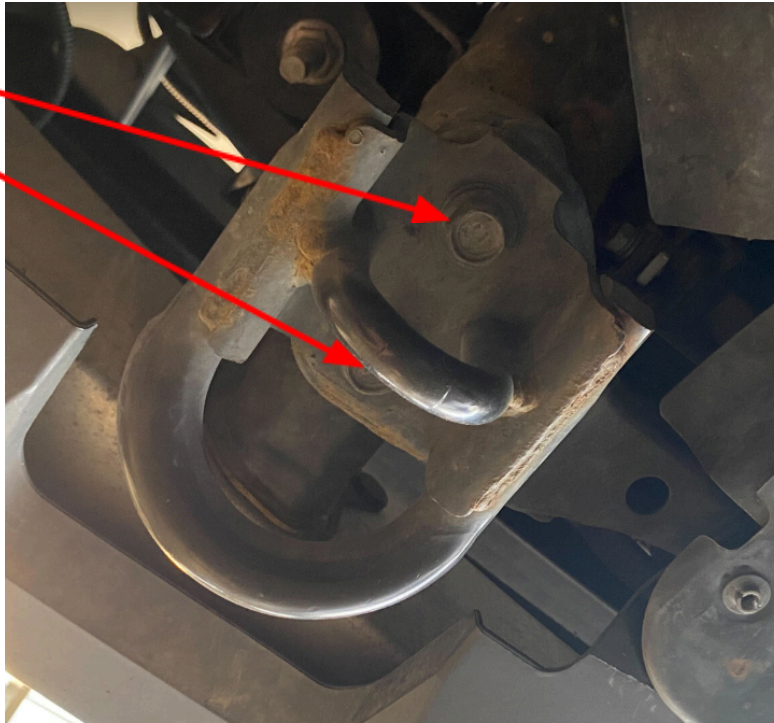
3) Disconnect the fog lights and the parking sensor wiring.



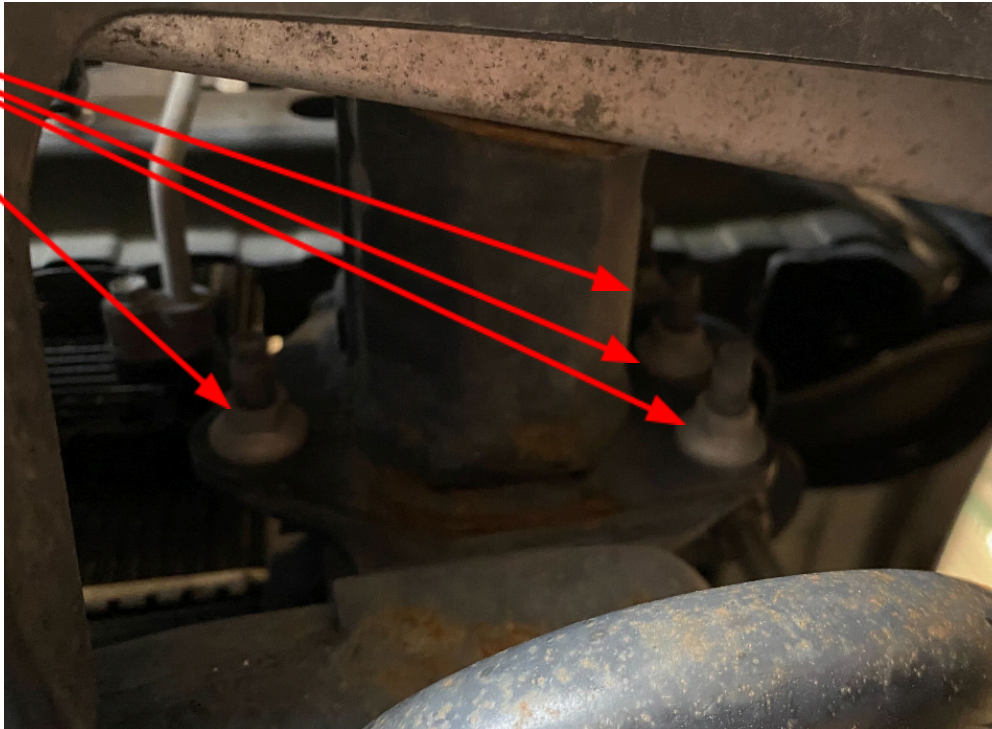
- 4) Remove factory grille.
 - a. Remove the 4 screws on the top of the grill along with the two trim clips on each side.
 - b. Disconnect ACC sensor if applicable.
 - c. After removing the hardware, the grille will only be held on by clips. Pull on the sides of the grille to release it from the vehicle.



- 5) Remove the factory tow hooks from both sides of the vehicle.



- 6) Remove the bumper from the vehicle.
 - a. Remove the 8 nuts securing the bumper (4 per side).



- 7) Once all the hardware is taken off the bumper can be removed and set aside.

- 8) If the vehicle is equipped with parking sensors, they need to be removed from the OEM bumper and re-installed in the RCI bumper before proceeding.
- a. Remove the parking sensors from the bumper by disconnecting them and taking out the white retaining clip.
 - i. Save the white retaining clip for installation on the RCI bumper.
 - b. Remove the parking sensor wiring harness and set it aside.



- 9) Install the parking sensor into the RCI bumper.
- a. Feed the sensor through the front of the bumper and secure it in place with the white retaining clip as modeled below.

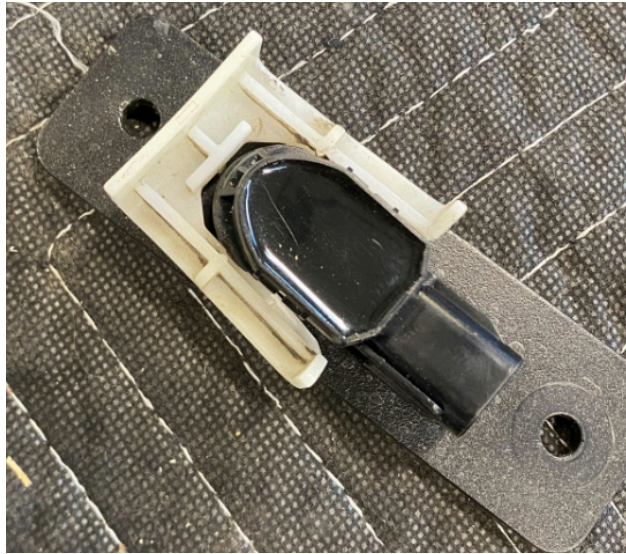


Figure 4: Example of parking sensor installed (Ignore bracket in model, parking sensor will be mounted directly to the bumper)

10) If installing a winch, the power steering radiator needs to be relocated.

11) Remove the two bolts securing the radiator.

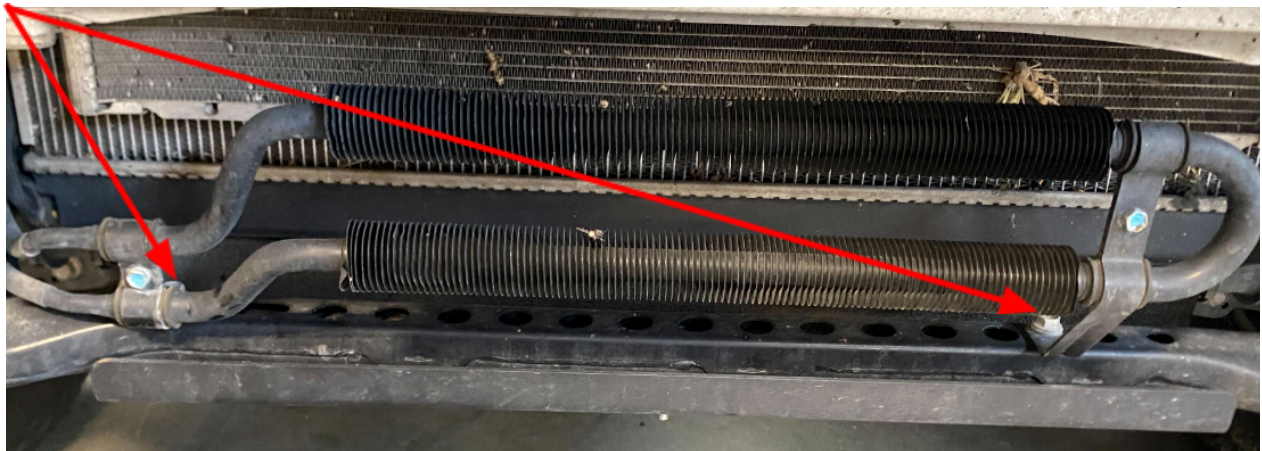


Figure 5: Remove the two M8 bolts securing the radiator

a. Flip the passenger side radiator mount.

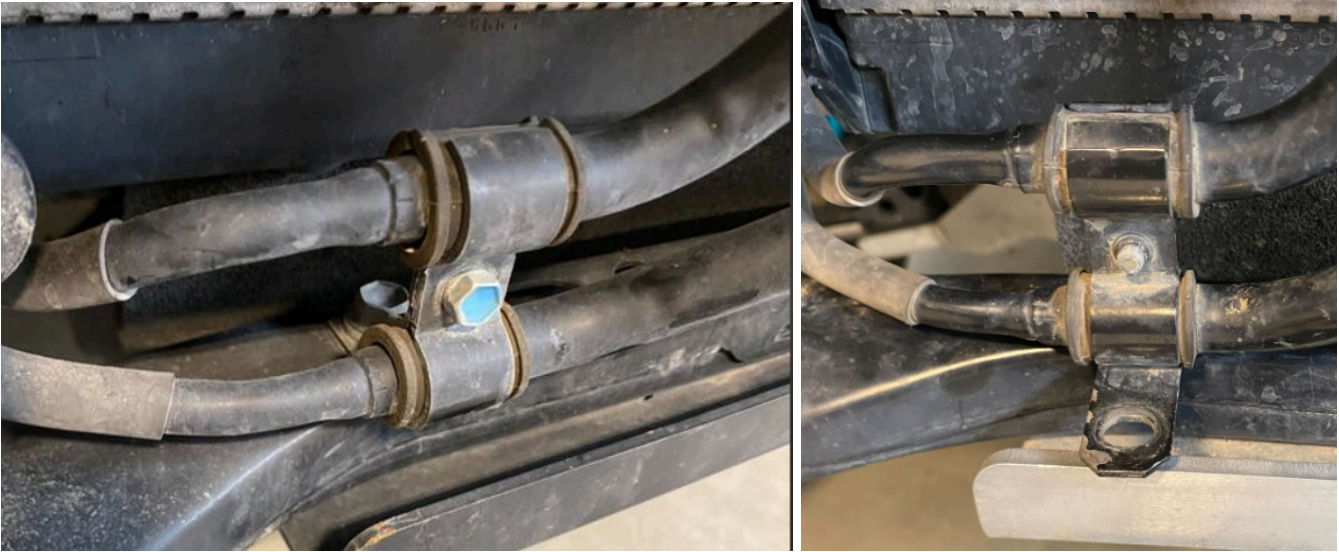


Figure 6: Flip passenger side bracket

- b. Install the provided relocation brackets as depicted below. Using the OEM hardware and the 5/16" carriage bolts, 5/16" washers, and 5/16" locknut.

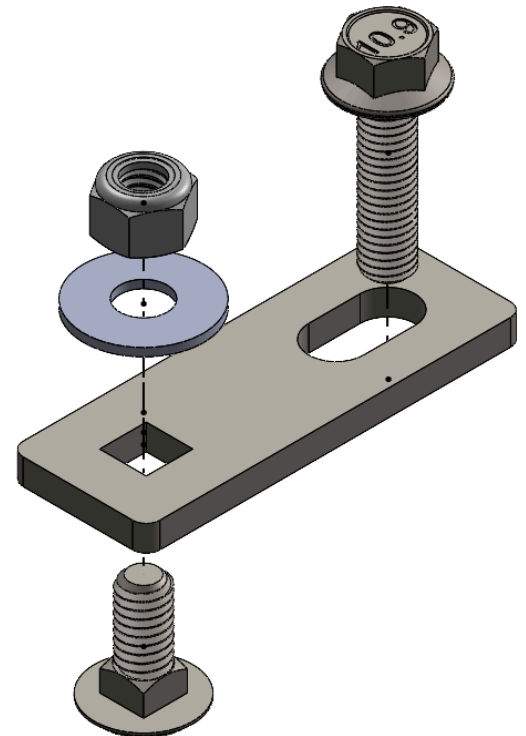


Figure 7: Passenger side correct installation



Figure 8: Driver side correct installation

- 12) Before mounting the bumper to the vehicle, install any desired lights, winches, or fairleads.
- 13) If installing the bumper with an OEM front skid plate remove the frontmost bolts so the bumper can be mounted above the skid plate.
- 14) With the help of a friend, mount the bumper to the vehicle.
 - a. Align the slots on the bumper with the studs on the vehicle and reinstall the OEM nuts to hold the bumper in place.
 - b. Don't fully tighten the nuts.



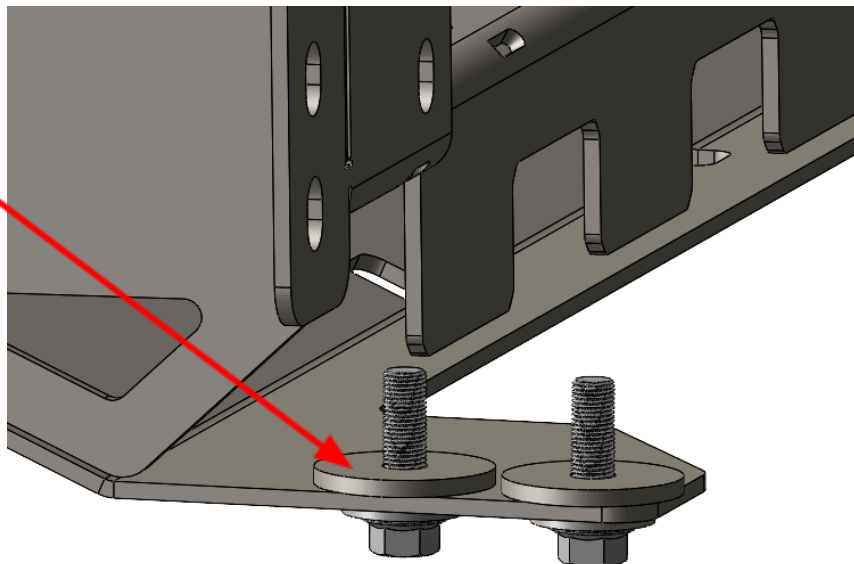
Figure 9: Correct installation of bumper on mounting surface

- 15) Collect the provided M12 bolts and 1/2" washers and install them in the lower threaded holes where the OEM tow hooks were mounted.
 - a. Fully tighten these lower M12 bolts
 - i. If height adjustment is needed, add the provided full moon spacers between the bottom of the bumper and the frame of the vehicle before installing the M12s.



Full Moon Spacer

(Only install if bumper needs to sit lower on the vehicle)



- 16) With the lower mounts tight, fully tighten the 8 nuts mounting the bumper.
 - a. Tighten the front skid plate.



Figure 10: Example of OEM skid installed with RCI front bumper

- 17) If applicable, plug in parking sensors.
- 18) Reinstall the truck's grille to complete the installation.

Enjoy your new RCI protection!

RCI OFFROAD



Share your new install with us on social media!
We love seeing our products out in the wild!

www.rcimetalworks.com

sales@rcioffroad.com

970-797-3089

REV: 1 | 9/29/2022

Disclaimer: The products sold by RCI Metalworks are intended for off-road use only, should not be modified, and are for use only on the vehicle(s) specifically stated. RCI Metalworks makes no warranties express or implied, including of fitness for a particular purpose or merchantability. RCI Metalworks will not be liable for any damages arising out of the use or misuse of its products. It is the customer's responsibility to ensure the products are safely and properly attached to the vehicle, and all products should be installed by trained professionals. We strive to maintain extremely high quality standards; however, all RCI Metalworks products are individually handcrafted, may vary slightly, and may contain minor imperfections. Due to the nature of raw aluminum, the material may have minor scratches and other blemishes caused by the manufacturing process, especially on the back side of product. RCI Metalworks is constantly seeking to improve its products and reserves the right to make changes to any product.



APPENDIX A:

Additional Mounting Bracket Installation Instructions for 21+ Broncos