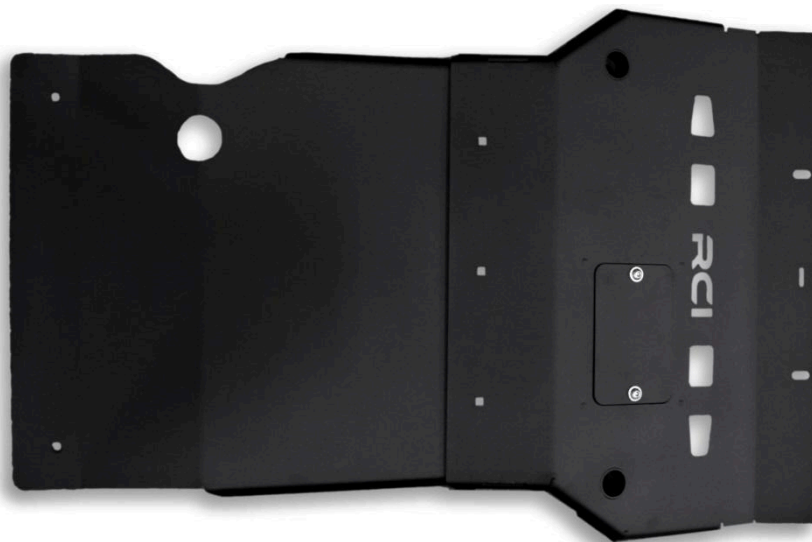


RCI 22+ TOYOTA TUNDRA FRONT SKID PLATE INSTALLATION GUIDE

This install guide is applicable to our 22+ Tundra Engine & Secondary Skid Plate ONLY



TOOLS REQUIRED:

Description	Wrench
3/8" or 1/2" Socket and Socket Set	
Socket Wrench Extension Set	

INCLUDED

HARDWARE:

Item	Description	QTY
H1.	M8 x 1.25 x 30MM Hex Bolt	6 ea.
H2.	3/8" Washer	9 ea.
H3.	3/8" x 1/2" Nylon Spacer	2 ea.
H4.	3/8" x 1" Carriage Bolt	3 ea.
H5.	3/8" Split Washer	3 ea.
H6.	3/8" Hex Nut	3 ea.
H7.	M8 x 1.25 x 25mm Button Head Bolt (pre-installed on skid)	2 ea.
H8.	1/4" Washer (pre-installed on skid)	2 ea.
H9.	M8 Steel U-nut (pre-installed on skid)	2 ea.

INCLUDED COMPONENTS:

Item	Description	QTY
C1.	22+ Tundra Engine Skid Plate	1 ea.
C2.	22+ Tundra Secondary Skid Plate	1 ea.
C3.	Oil Filter Access Door (pre-installed on skid)	1 ea.

INSTALLATION STEPS:

- 1) Begin by unpacking and removing all components and hardware. Please verify that all hardware, components, and mounting components are present. Please reference your original order invoice and verify all items are accounted for.
- 2) First assemble the Engine Skid Plate to the Secondary Skid Plate. Align the two so that the Secondary Skid Plate sits above the Engine Skid Plate. Install the 3/8" x 1" Carriage Bolt(H4) from the bottom of the skid plate going UP. Install the 3/8" Washer(H2), 3/8" Split Washer(H5), and the 3/8" Hex Nut(H6) in that order. Repeat this for all three mounting locations.
- 3) Remove OEM Toyota installed skid plate present under the engine and radiator. These are easily removed with four bolts per plate (two visibly towards the back and two hidden by the air dam). Retain the rear most OEM hardened steel hex bolts for use with your new RCI Engine Skid plate.
 - a. **NOTE:** If your Tundra does not have an OEM Skid plate, disregard Step 3 and use the two extra M8 x 1.25 x 30MM Hex Bolt (H1) in place of the OEM hardened steel hex bolts.
- 4) Align the 90-degree flange on the Tundra Engine Skid Plate(C1) with the front of the radiator support crossmember on the truck. Place the 3/8" Nylon Spacer(H3) on the bolt, between the skid plate and the vehicle frame. Using the OEM hardened steel hex bolts, hand thread one in the forward two mounting holes of the plate. These bolts should thread into the location that the OEM brackets occupied. Leave the bolts loose.
- 5) Hinge the rear most portion of the plate up to the rear crossmember of the front suspension. Temporarily hand thread one M8x1.25x30mm Hex Bolt(H1) and 3/8" Washer(H2) through the plate and into the newly aligned mounting hole on the vehicle frame. Thread the bolt far enough in to support the weight of the skid plate temporarily.
- 6) Collect the second M8 Hex Bolt(H1) and the 3/8" Washer(H2). Insert the M8 bolt and washer through the second rear most mounting location on the skid plate. Thread the bolt far enough that the plate is supported.
 - a. Remove the bolt from step 5 and repeat step 6.
 - i. **PLEASE NOTE:** If you are installing the RCI Transmission skid plate simultaneously, the mounting order should be as follows: **Ground>Engine Skid Plate>Transmission Skid Plate>Vehicle frame.**

- 7) While supporting the Tundra Front Skid Plate(C1) hand thread all bolts installed in steps 4-6 to snug but **NOT** tightened. The tube mounts of the skid plate should now be aligned with the mounting points on the vehicle frame. Using the socket extension (no wrench) and the proper socket, apply an M8 x 1.25 x 30MM Hex Bolt(H1) to the socket and hand thread the bolt in the tube support. Snug with socket extension only, do **NOT** attach the socket wrench.
- 8) With all mounting hardware in place, begin by tightening the forward and rear bolts first. Tighten the tube support bolts last.
- 9) Installation of your new RCI 22+ Toyota Tundra Front Skid Plate is now complete!

Share your new install with us on social media!
We love seeing our products out in the wild!

www.rcimetalworks.com

sales@rcioffroad.com

970-797-3089

REV: 1 | 01/26/2022

Created: AWM

