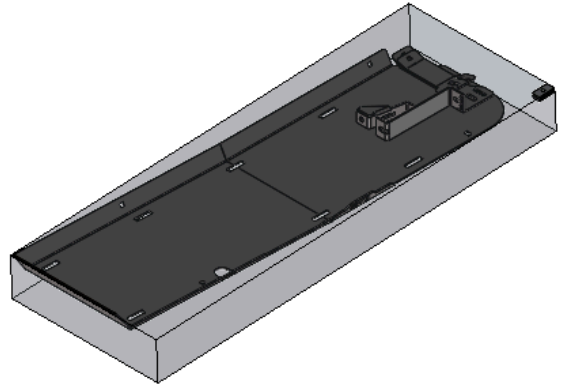


RCI 15-22 Chevy Colorado Fuel Skid Plate Installation Guide

ITEM NO.	PART NUMBER	DESCRIPTION	QTY.
1	SM-00921	MS 15-22 Chevy Colorado Fuel Tank Skid	1
2	SM-00925	15-22 Chevy Colorado Fuel Tank Skid front outer mount	1
3	SM-00924	15-22 Chevy Colorado Fuel Tank Skid front inner mount	1
4	SM-00923	15-22 Chevy Colorado Fuel Tank Skid rear inner mount	1
5	SM-00926	15-22 Chevy Colorado Fuel Tank Skid rear outer mount	1
6	HW-00152	Toyota .375 Track Nut	2
7	HK-00161	KIT: 15-22 Colorado Fuel Skid Hardware	1
8	BX-00004	8 T4R Fuel 52x19x5	1

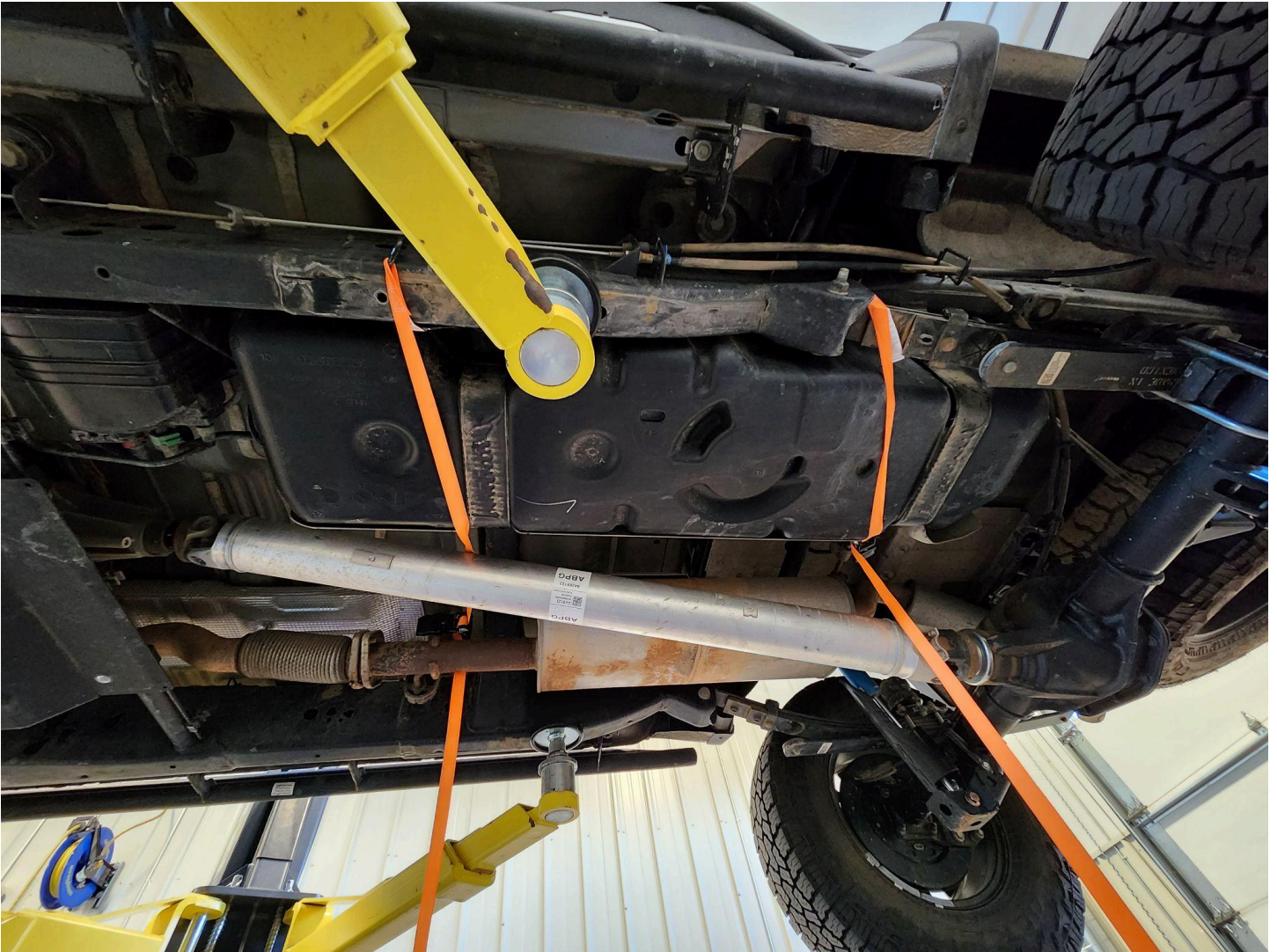


UNLESS OTHERWISE SPECIFIED:	PROPRIETARY AND CONFIDENTIAL	DRAWN	NAME	DATE
DIMENSIONS ARE IN INCHES TOLERANCES: FRACTIONAL: ±0.010 ANGULAR: BEND ±0.5 TWO PLACE DECIMAL ± 0.015 THREE PLACE DECIMAL ± 0.010	THE INFORMATION CONTAINED IN THIS DRAWING IS THE SOLE PROPERTY OF RCI Offroad. ANY REPRODUCTION IN PART OR AS A WHOLE WITHOUT THE WRITTEN PERMISSION OF RCI Offroad IS PROHIBITED.	NA	NA	NA
		Export Date		
RCI OFFROAD				
TITLE:		COLORADO-15-FUEL-XXXXX - SHIP BOM		
Item Number	FG-00544			REV 1
DO NOT SCALE DRAWING		SCALE: 1:12	WEIGHT:	SHEET 1 OF 14

INSTALLATION STEPS:

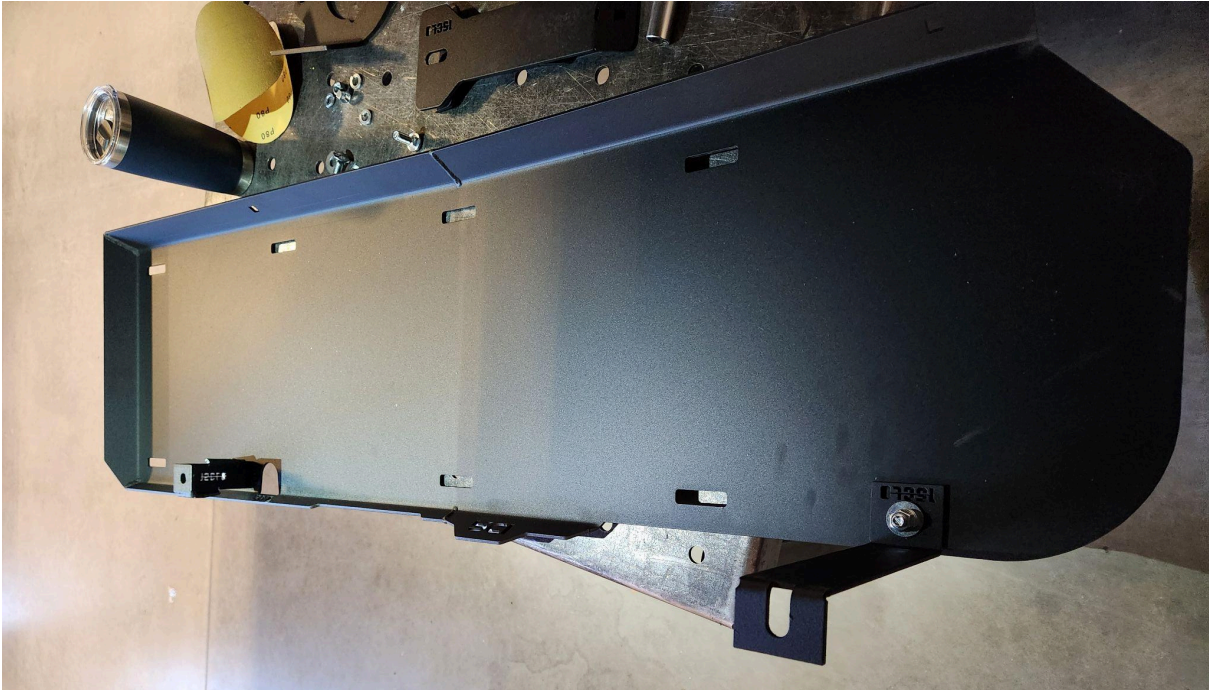
****Use hand tools, impact wrenches may cause damage if over torqued.**

1. Begin by unpacking and removing all components and hardware. Please verify that all hardware, components, and mounting components are present. Please reference your original order invoice and verify all items are accounted for.
2. Prepare the vehicle fuel tank for install by supporting the fuel tank with at least two ratchet straps
 - a. In the following steps, the OEM fuel tank straps will be un-bolted from the vehicle frame temporarily. It is important to keep the tank supported during this step to prevent the tank from falling.

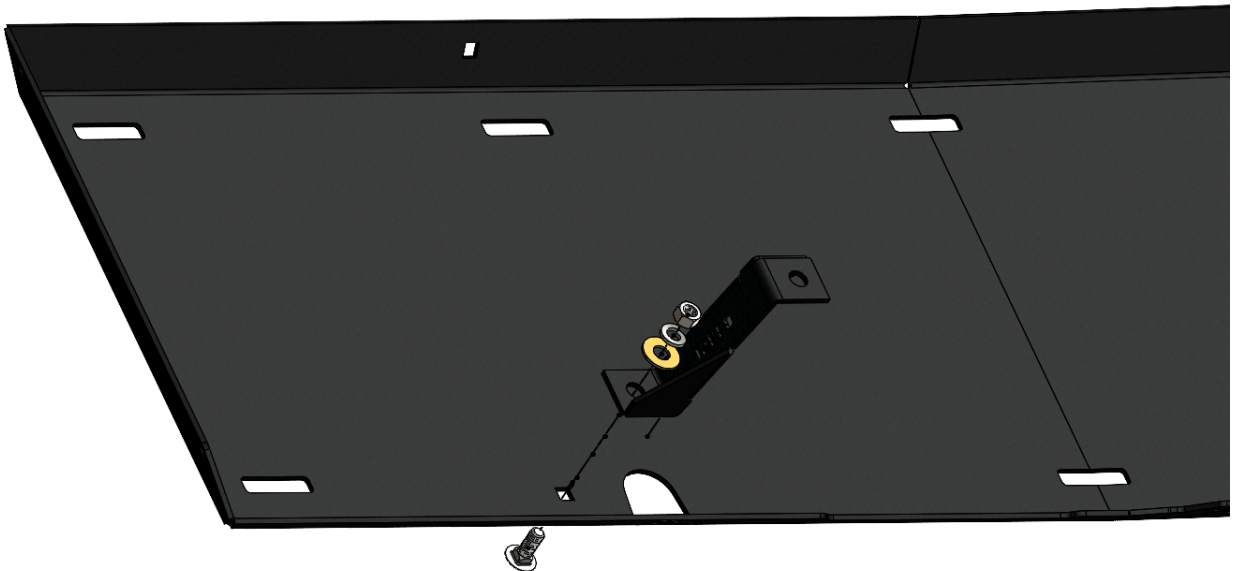


3. Remove the two bolts securing each of the OEM fuel straps to the frame of the vehicle at the driver side of the vehicle.

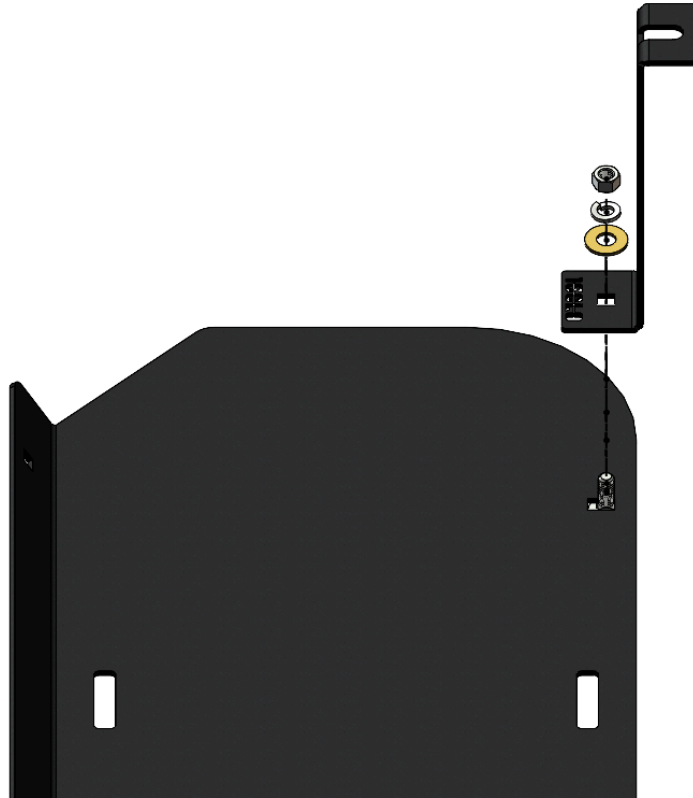
4. Use two sets of included 3/8" carriage bolts, washers, split washers, and nuts to install the front outer bracket and rear outer bracket as shown below:



- a. The front outer bracket should be installed with the outer edge of the bracket parallel with the outer edge of the skid plate.



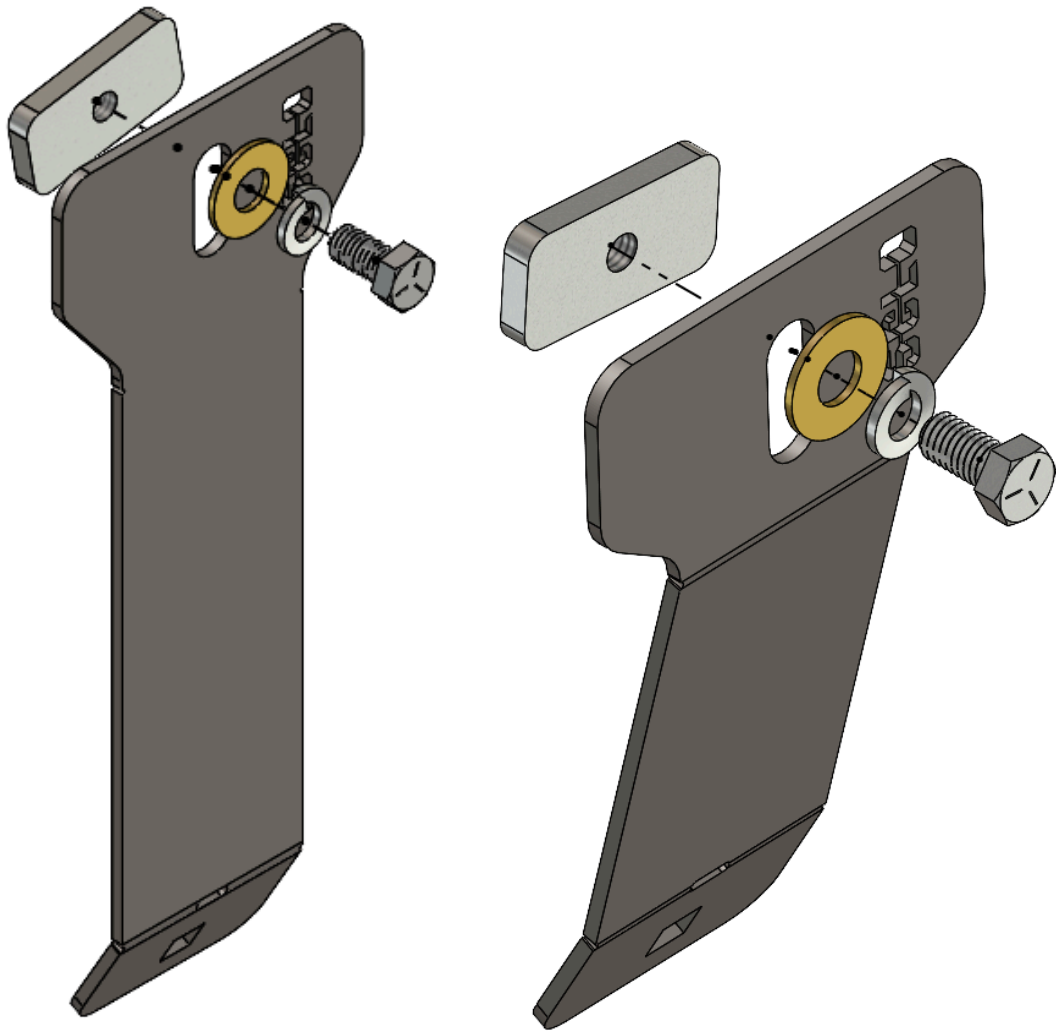
- b. The rear outer bracket should be installed with the outer face in line with the outer edge of the skid plate.



5. With the outer brackets secured to the skid plate, lift the skid plate assembly up to the vehicle and reinstall the OEM bolts removed from the outer ends of the fuel straps in step 3 through the brackets installed in the previous step, through the outer ends of the fuel straps, and back into the frame of the vehicle.
6. Remove the ratchet straps that were securing the fuel tank.

7. Loosely install a set of 3/8" bolts, split washers, washers, and RCI Toyota Track Nut [Zinc-coated rectangle with a single tapped hole] in the upper slot of the front inner bracket and rear inner bracket.





8. With the hardware assemblies loose, slide the RCI Toyota Track Nuts into the rectangular cutout of the bracket that secures the inner ends of the OEM fuel straps. Pull down on the hardware assembly to ensure the track nut is securely seated within the bracket.
 - a. The longer inner bracket with a single bend is the rear bracket. The front bracket is shorter and has two bends.



9. Use the remaining sets of 3/8" carriage bolts, washers, split-washers, and nuts to secure the front and rear inner brackets to the skid plate.



10. Tighten all of the hardware present on the driver side of the skid plate.
11. Apply upward pressure to the skid plate to ensure that the skid contacts the fuel tank. Tighten all of the hardware present on the passenger side of the skid plate.



Enjoy your new RCI protection!



Share your new install with us on social media!

We love seeing our products out in the wild!

www.rcimetalworks.com

sales@rcioffroad.com

970-797-3089

REV: 11/20/2022

Disclaimer: The products sold by RCI Metalworks are intended for off-road use only, should not be modified, and are for use only on the vehicle(s) specifically stated. RCI Metalworks makes no warranties express or implied, including of fitness for a particular purpose or merchantability. RCI Metalworks will not be liable for any damages arising out of the use or misuse of its products. It is the customers' responsibility to ensure the products are safely and properly attached to the vehicle, and all products should be installed by trained professionals. We strive to maintain extremely high-quality standards; however, all RCI Metalworks products are individually handcrafted, may vary slightly, and may contain minor imperfections. Due to the nature of raw aluminum, the material may have minor scratches and other blemishes caused by the manufacturing process, especially on the back side of product. RCI Metalworks is constantly seeking to improve its products and reserves the right to make changes to any product.

