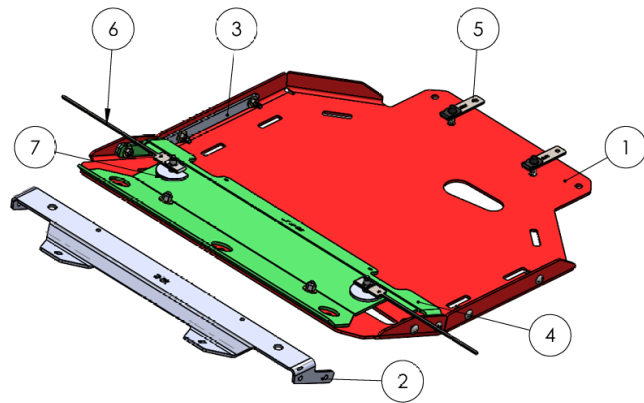


RCI SUBARU 18+ CROSSTREK ENGINE SKID

INSTALLATION GUIDE

ITEM NO.	PART NUMBER	DESCRIPTION	QTY.
1	SM-00895	18 Crosstrek & 19 Forester Engine Skid	1
2	SM-00897	18 Crosstrek Spacer Plate	1
3	SM-00896	CF Flange Brace	2
4	SM-00898	19 Forester Spacer Plate	1
5	HW-00002	Mounting Plate #1 (MP1)	2
6	HW-00160	Mounting Plate #4 (MP4)	2
7	HW-00042	Half Moon Spacer	2
8	HK-00157	Engine Hardware Kit	1
	HW-00158	3/8-16 X 1-1/4 CARRIAGE BOLT	2
	HW-00026	3/8 USS FLAT WASHER THRU HARD	2
	HW-00062	5/16-18 NYLON INSERT LOCK NUT	8
	HW-00023	M10-1.5 U-NUT	2
	HW-00021	M10-1.5 X 35MM HEX FLANGE BOLT	2
	HW-00037	5/16 USS FLAT WASHER ZINC	10
	HW-00179	5/16-18 x 1.25" Carriage Bolt Zinc	8
	HW-00066	M8-1.25 X 40MM HEX FLANGE BOLT	2
	HW-00071	3/8-16 NYLON INSERT NUT	2
	HW-00187	M10 Bolt Protector	2
	HW-00024	M8-1.25 U-NUT	2



****Use hand tools, impact wrenches may cause damage if over torqued.****

Preparation

- 1) Remove the plastic retaining clips at the following locations.



Figure 1: Bottom View of Plastic Clips to Remove



Figure 2: Lower Side View of Retaining Clips to Remove



Figure 3: Upper Side View of Retaining Clips to Remove

- 2) Remove the bolts at the following locations and support the OEM plastic when removing the last bolt.



Figure 4: Bottom View of Bolts to Remove

Installation

- 3) Begin by unpacking and removing all components and hardware. Please verify that all hardware and mounting components are present. Reference your original order invoice and verify all items are accounted for.
- 4) Collect the MP1 plates and Speed Clips. Assemble MP1 Plate as shown.



Figure 5: Assembly of MP1 Plates and Speed Clips

5) Using one of the assembled MP1 plates, partially thread one M10 x 35mm bolt with a 7/16" washer into the speed clip. Insert it into a slot with the greatest clearance above it (2 or 3).

a) When using a mounting hole (1 or 4) place the MP1 plate without the bolt threaded in from above. See figures below.

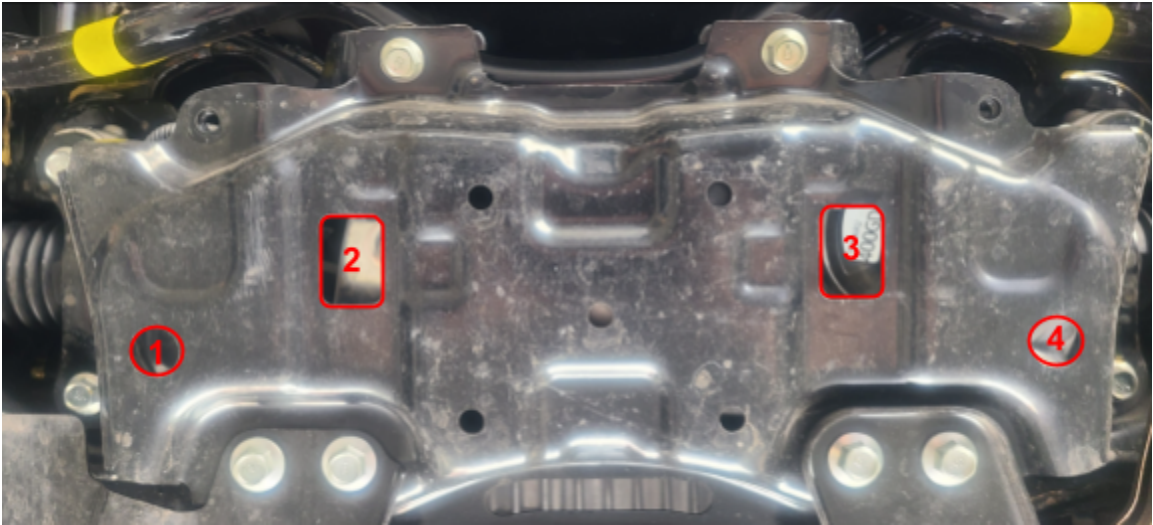


Figure 6: Speed clip location key.

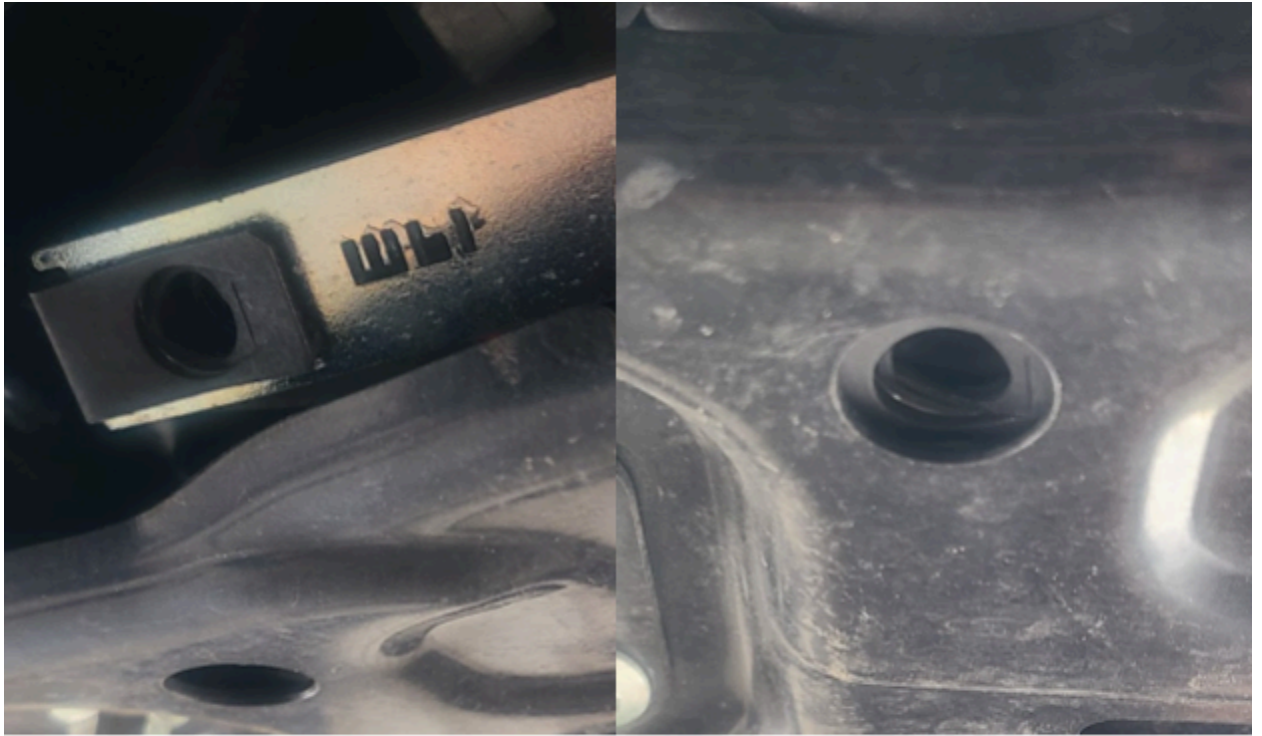


1: Partially thread bolt.

2: Insert assembly into slot.

3: Remove bolt once inserted.

Figure 7: Installation and assembly process for slot mounting.



1: Place MP1 behind frame.

2: Align MP1 speed clip hole with frame hole and thread in bolt.

Figure 8: Installation and assembly process for hole mounting.

- 6) Collect the engine skid, 2x braces, 4x 5/16-18 x 1.25" Carriage Bolts, 4x 5/16-18 Nylon Locking Nuts, and 4x 5/16 USS Flat Washers. Place the skid on the ground with the bends facing up. Assemble the hardware and braces as shown.



Figure 9: Engine Brace Assembly.

- 7) Collect the Crosstrek mounting bracket labeled "18 C", 2x $\frac{3}{8}$ " carriage bolts, 2x $\frac{3}{8}$ " washers, 2x $\frac{3}{8}$ " nylon Lock Nuts, 4x 5/16-18 x 1.25" Carriage Bolts, 4x

5/16-18 Nylon Locking Nuts, and 4x 5/16 USS Flat Washers. Assemble the hardware, mounting plate, and braces as shown.

- a) ***Before proceeding with this step*** If you have a front lip now is the time to install it. Please refer to the appropriate installation guide before continuing.

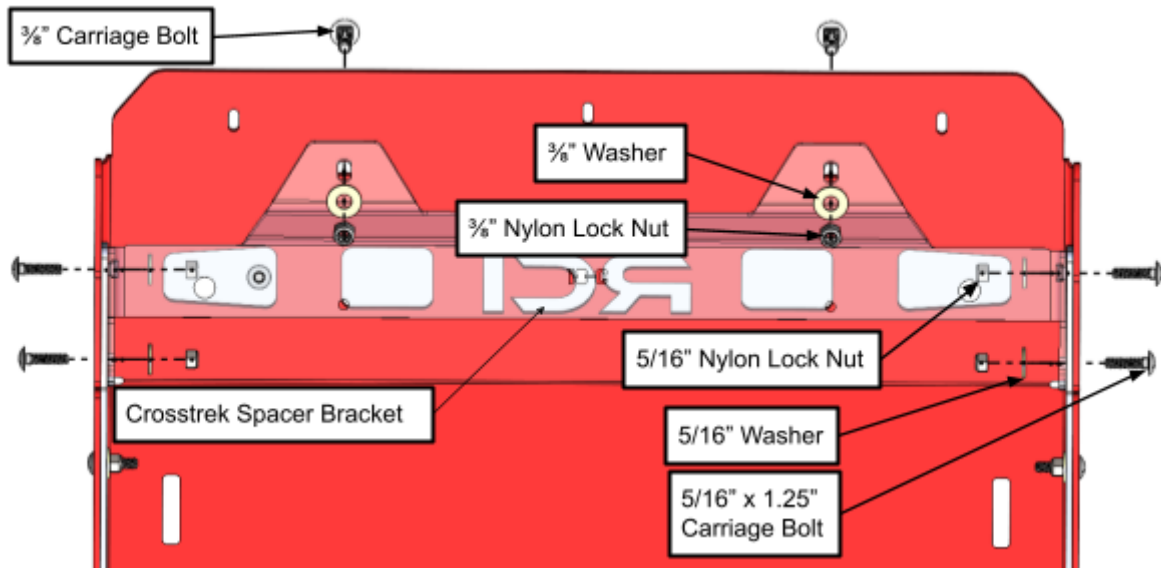


Figure 10: Spacer Bracket Assembly.

- 8) Collect 2x 5/16" Washers and 2x M8 x 45mm Bolts. Assemble the inner mounting hardware as shown. Prepare outer hardware for installation.

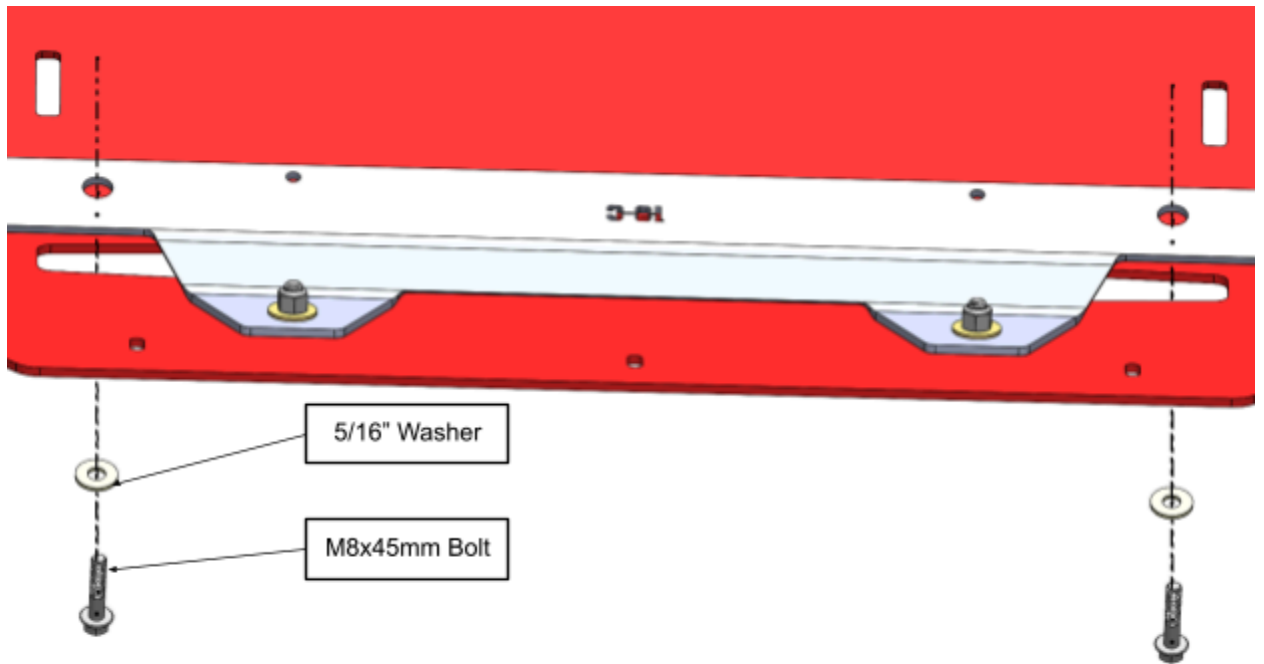


Figure 11: Front Hardware Preparation.

- 9) Lift the skid into place and hand thread in the 2 M8 bolts into the frame in the following locations.



Figure 12: Front Mounting Bolt Locations.

- 10) Collect 2x M10 x 35mm bolts and 2x Bolt Protectors. Push up on the rear of the skid. Thread in and hand tighten the rear mounting bolts into the previously installed MP1 plate assembly.

- a) If you have an RCI Transmission skip this step and follow the transmission install guide procedure.

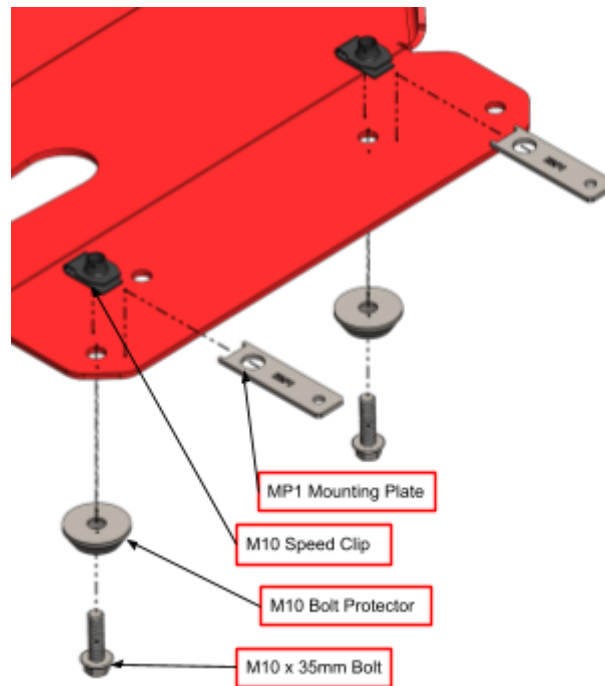


Figure 13: Rear Mounting Hardware.

- 11) Tighten and recheck all hardware.

Enjoy your new RCI protection!



Share your new install with us on social media!
We love seeing our products out in the wild!



www.rcimetalworks.com

sales@rcioffroad.com

970-797-3089

REV: 1 | 9/29/2022

Disclaimer: The products sold by RCI Metalworks are intended for off-road use only, should not be modified, and are for use only on the vehicle(s) specifically stated. RCI Metalworks makes no warranties express or implied, including of fitness for a particular purpose or merchantability. RCI Metalworks will not be liable for any damages arising out of the use or misuse of its products. It is the customers' responsibility to ensure the products are safely and properly attached to the vehicle, and all products should be installed by trained professionals. We strive to maintain extremely high quality standards; however, all RCI Metalworks products are individually handcrafted, may vary slightly, and may contain minor imperfections. Due to the nature of raw aluminum, the material may have minor scratches and other blemishes caused by the manufacturing process, especially on the back side of product. RCI Metalworks is constantly seeking to improve its products and reserves the right to make changes to any product.

