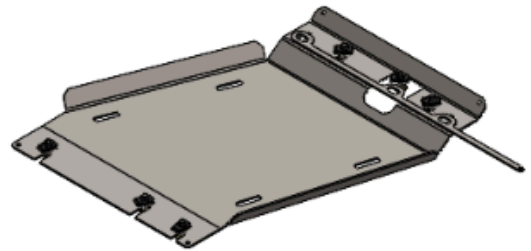


RCI 2.7L 19+ Chevy Silverado T-Case Skid Plate Installation Guide

ITEM NO.	PART NUMBER	DESCRIPTION	QTY.
1	SM-00804	.135MS Silverado T-CASE Skid R1	1
2	BX-00067	33x28x3 (Frontier Trans Box)	1
3	HK-00134	KIT: 19+ SILVERADO TCASE SKID HARDWARE R2	1
3.1	HW-00021	M10-1.5 X 35MM HEX FLANGE BOLT	6
3.2	HW-00026	3/8 USS FLAT WASHER THRU HARD	6
3.3	HW-00023	5558B1M: M10-1.5 U-NUT .90MM-	6
4	SM-00912	Silverado T-Case Mounting Bar	1



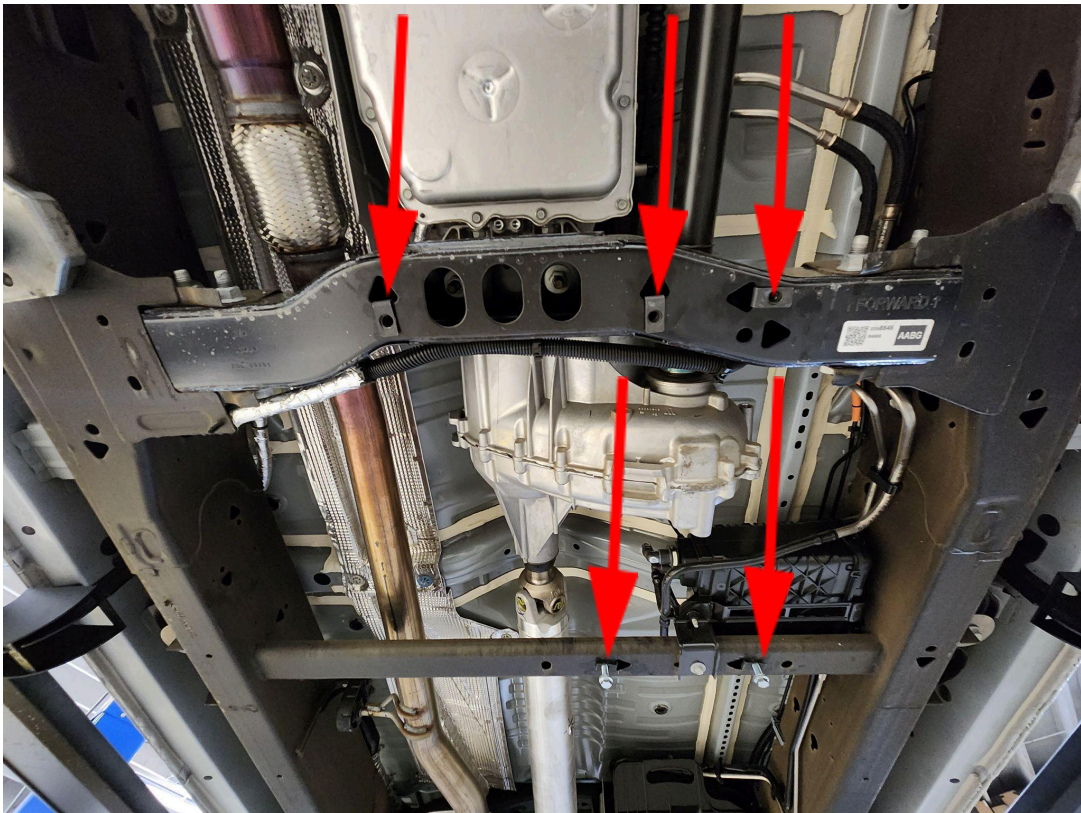
UNLESS OTHERWISE SPECIFIED:	PROPRIETARY AND CONFIDENTIAL	DRAWN	NAME	DATE
DIMENSIONS ARE IN INCHES TOLERANCES: FRACTIONAL ±0.010 ANGULAR: BEND ±0.5 TWO PLACE DECIMAL ± 0.015 THREE PLACE DECIMAL ± 0.010	THE INFORMATION CONTAINED IN THIS DRAWING IS THE SOLE PROPERTY OF RCI OFFROAD. ANY REPRODUCTION IN PART OR AS A WHOLE WITHOUT THE WRITTEN PERMISSION OF RCI OFFROAD IS PROHIBITED.	KL		11/12/2024
		Export Date		
RCI OFFROAD				
TITLE: BOM_SLVRD-19-TCASE-STBK-R2 BOM				
Item Number	FG-00481			REV 1
DO NOT SCALE DRAWING		SCALE: 1:10 WEIGHT:		SHEET 1 OF 1

Figure 1:BOM

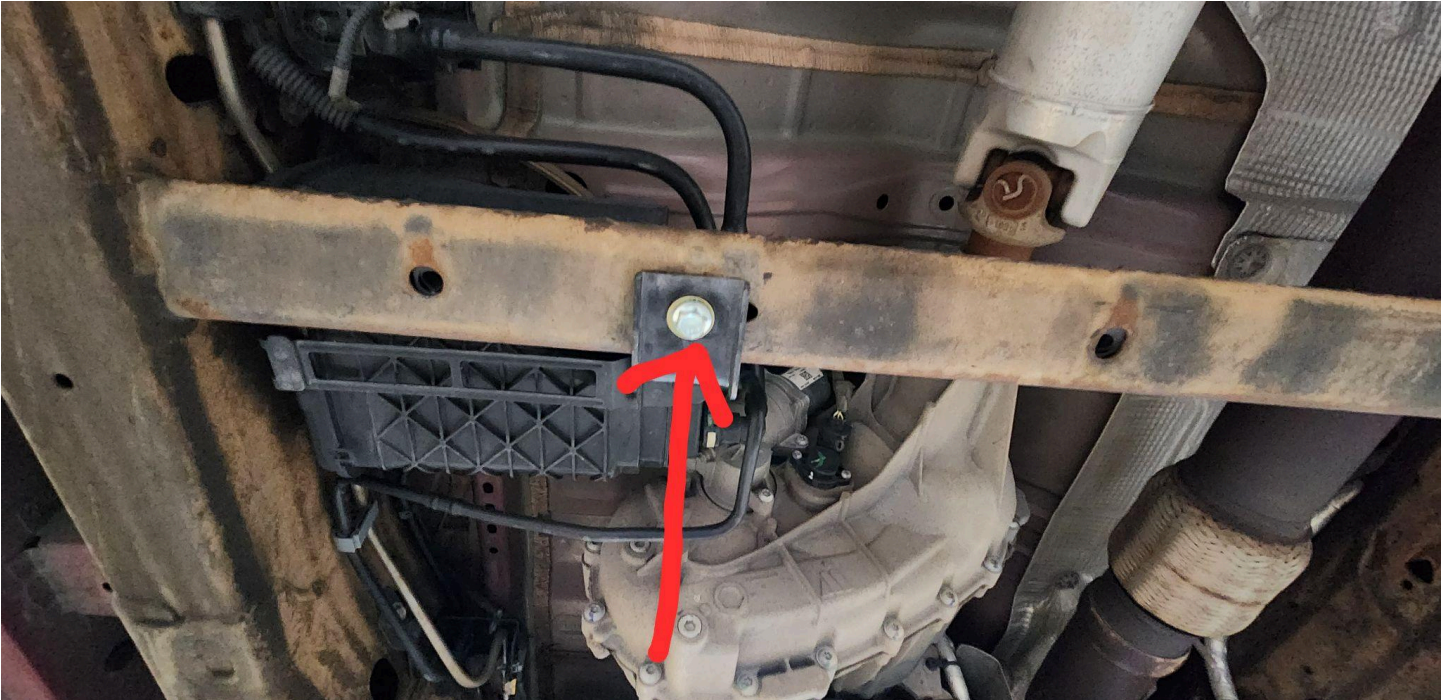
INSTALLATION STEPS:

****Use hand tools, impact wrenches may cause damage if over torqued.**

1. Begin by unpacking and removing all components and hardware. Please verify that all hardware, components, and mounting components are present. Please reference your original order invoice and verify all items are accounted for.
 - a. Removing the wheels and tires from the rear axle will make the installation process significantly easier; however, it is not strictly necessary, and installation can be performed with the wheels and tires on the vehicle and the vehicle
2. Remove any skid plates being replaced with RCI components from the vehicle.
 - a. If installing in conjunction with an RCI engine skid plate, complete the steps listed in the engine skid plate installation guide before starting the transmission skid plate. Skip steps 3 and 5.
3. Ensure a set of M10 speed clips are installed in the locations shown below. If the vehicle did not come with M10 speed clips installed, M10 speed clips have been included with the hardware kit included with this order.



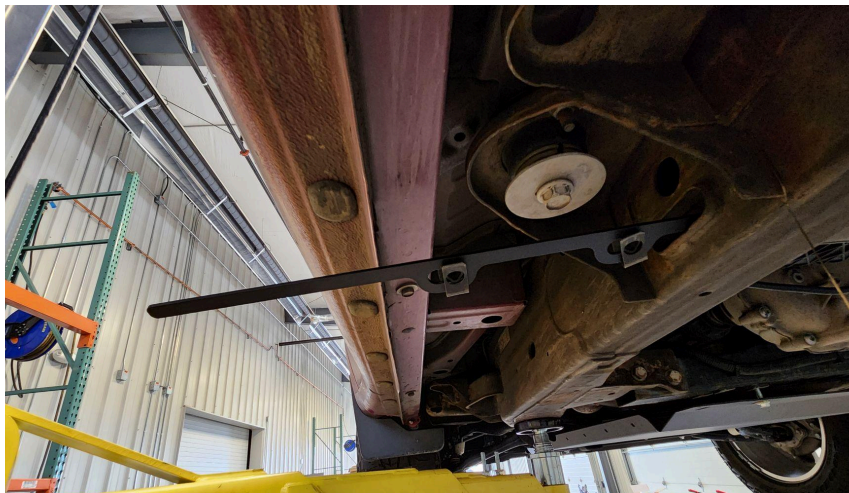
- a. For vehicles without the rear speed clip mounting locations, follow the below installation instructions instead:
 - i. Remove the m8 bolt from the rear crossmember. Then remove the single M8 speed clip from the rear crossmember.



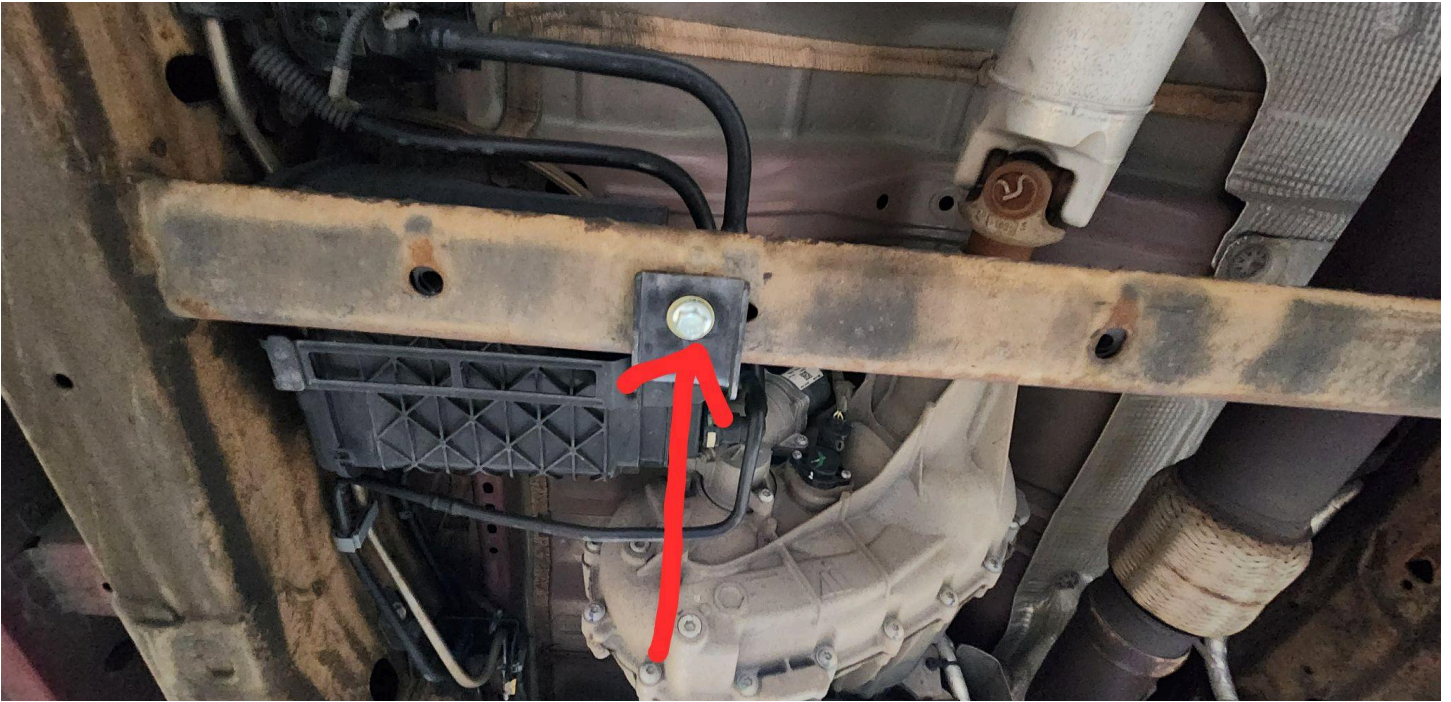
- ii. Install three included M10 speed clips on the mounting plate as shown:



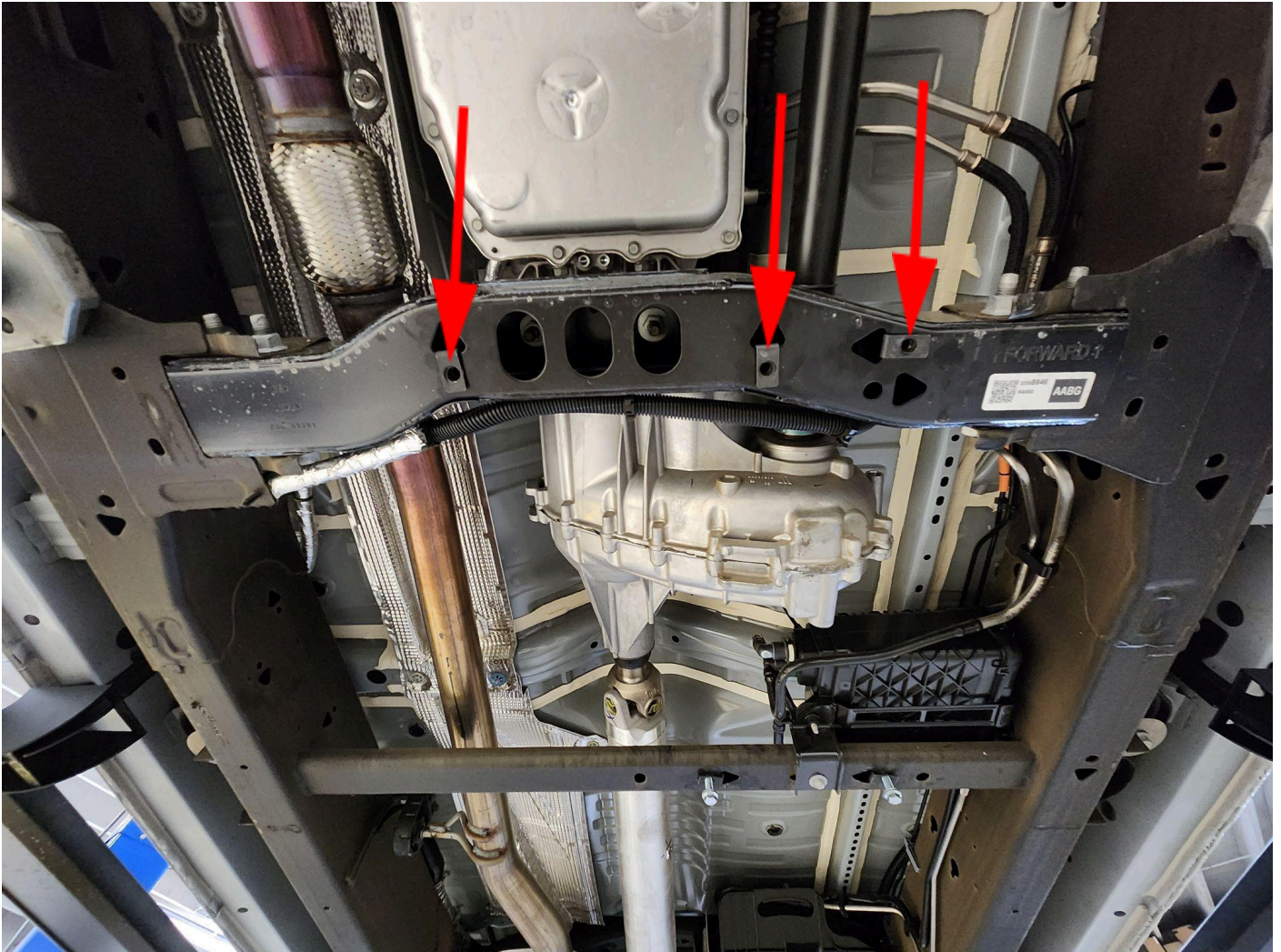
- iii. Insert the mounting plate in the crossmember from the driver side of the vehicle



- iv. Align the center speed clip with the original mounting location and loosely thread an M10 bolt into position.



4. With the speed clips installed, loosely install a set of M10 bolts and washers into the front mounting locations.



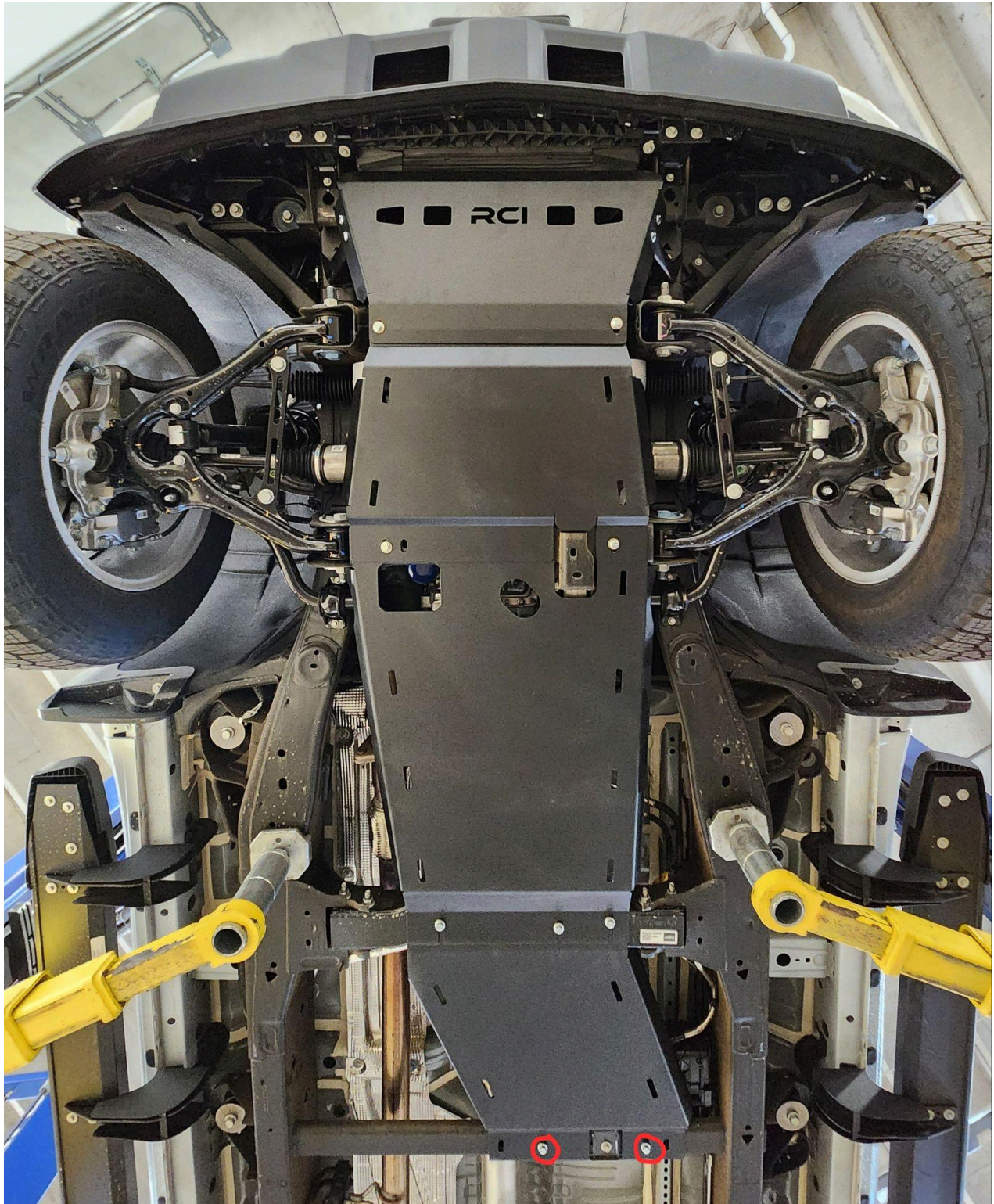
RCI OFFROAD

5. Slide the RCI T-case skid plate forward to wedge the skid plate between the vehicle frame and washers.
 - a. If the RCI T-case skid plate is being installed in conjunction with an RCI transmission skid plate, the T-case skid plate should be installed above the transmission skid plate between the vehicle frame and engine skid plate.



RCI OFFROAD

6. Install the included M10 bolts and washers through the rear of the skid plate and into the M10 speed clips placed in the rear crossmember.



RCI OFFROAD

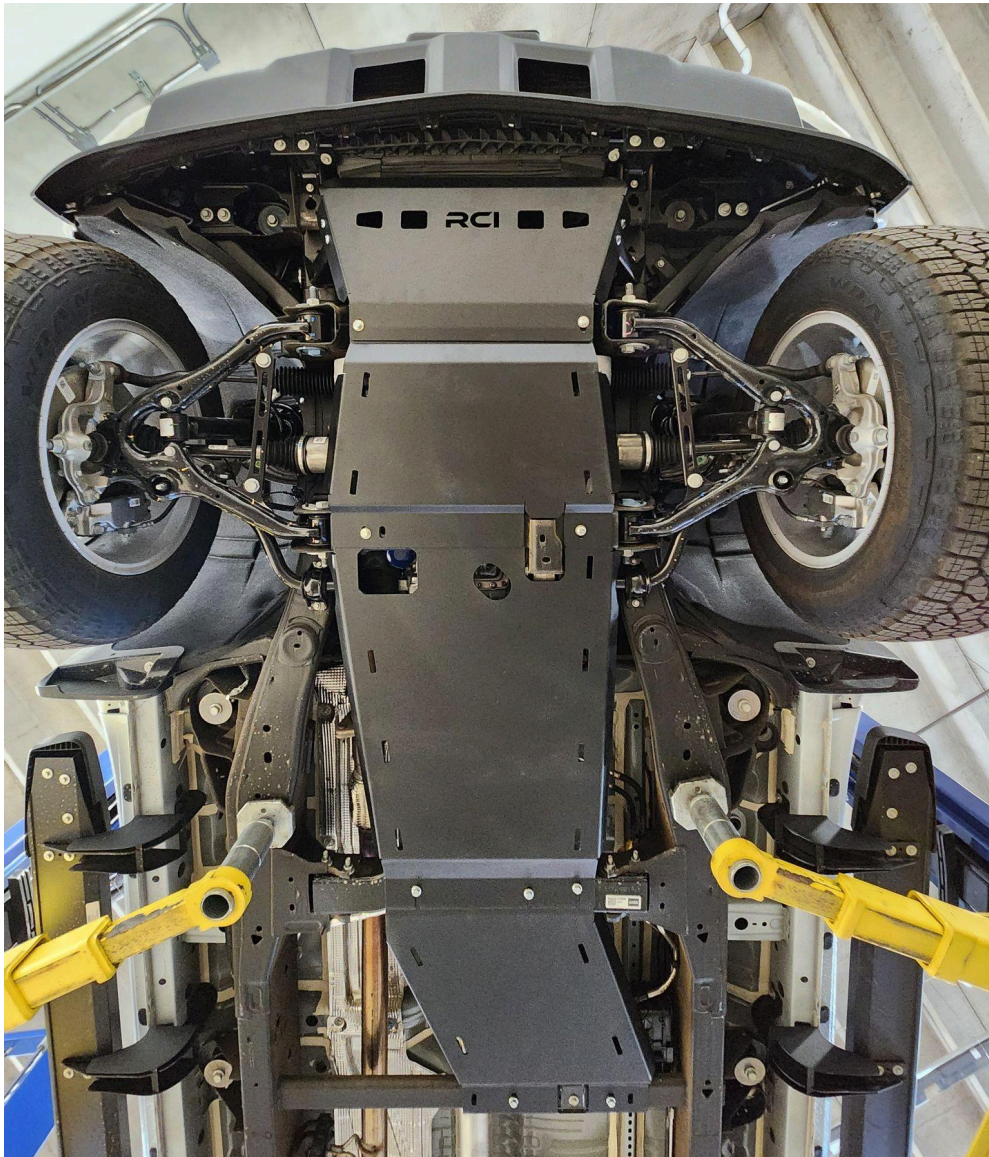
- a. For vehicles without the speed clip mounting locations in the rear crossmember, adjust the mounting plate within the crossmember with the outer slots on the skid plate and install the M10 hardware there instead.



7. Tighten all hardware.

RCI OFFROAD

Enjoy your new RCI protection!



Share your new install with us on social media!

We love seeing our products out in the wild!

www.rcimetalworks.com

sales@rcioffroad.com

970-797-3089

REV: 11/9/2022

Disclaimer: The products sold by RCI Metalworks are intended for off-road use only, should not be modified, and are for use only on the vehicle(s) specifically stated. RCI Metalworks makes no warranties express or implied, including of fitness for a particular purpose or merchantability. RCI Metalworks will not be liable for any damages arising out of the use or misuse of its products. It is the customers' responsibility to ensure the products are safely and properly attached to the vehicle, and all products should be installed by trained professionals. We strive to maintain extremely high-quality standards; however, all RCI Metalworks products are individually handcrafted, may vary slightly, and may contain minor imperfections. Due to the nature of raw aluminum, the material may have minor scratches and other blemishes caused by the manufacturing process, especially on the back side of product. RCI Metalworks is constantly seeking to improve its products and reserves the right to make changes to any product.

