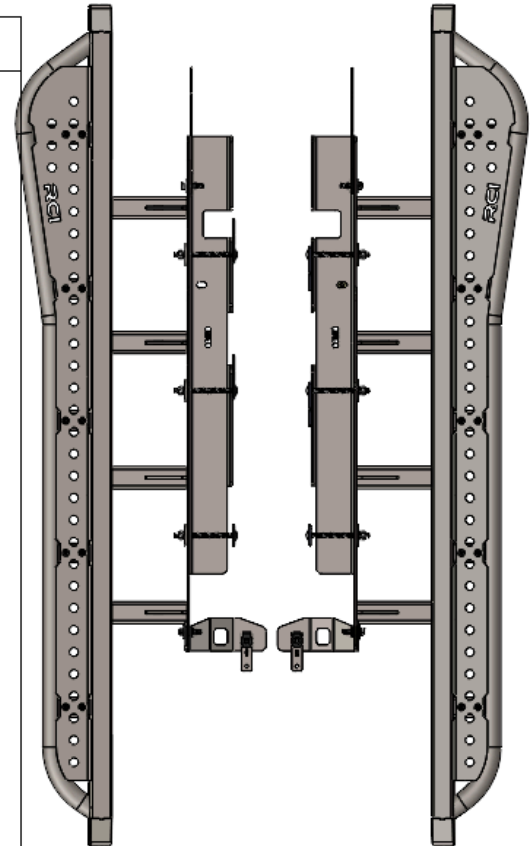


2nd Gen Sequoia Slider Installation Guide

ITEM NO.	PART NUMBER	DESCRIPTION	QTY.	
1	SM-00862 (Passenger)	08 Sequoia Slider- Driver	1	
2	SM-00861 (Driver)	08 Sequoia Slider- Passenger	1	
3	SM-00863 (Driver)	08 Sequoia Slider- Support Bracket Driver	1	
4	SM-00864 (Passenger)	08 Sequoia Slider- Support Bracket Passenger	1	
5	HW-00049	7/16-14 X 5-1/2 CARRIAGE BOLT	6	
6	HW-00028	Full Moon Spacer	6	
7	HW-00045	7/16 SPLIT LOCK WASHER ZINC	6	
8	HW-00047	7/16-14 FIN HEX NUT GR-5 ZINC	6	
9	HW-00088	M10-1.5 X 40MM NON SERRATED	6	
10	HW-00022	1/2 USS FLAT WASHER THRU HARD	6	
11	HW-00023	5558B1M: M10-1.5 U-NUT .90MM-	6	
12	HW-00025	M8-1.25 X 30MM HEX FLANGE BOLT	1	
13	HW-00037	5/16 USS FLAT WASHER ZINC	1	
14	HW-00006	Question Mark Carriage Bolt Plate	6	
15	HW-00002	Mounting Plate #1 .135MS	2	
16	HW-00160	Mounting Plate #4 .135MS	4	
17	SM-00313	.075 MS Bronco Tread Plate Passenger R4	1	Included if tread plates are optional
18	SM-00312	.075 MS Bronco Tread Plate Driver R4	1	
19	HW-00118	1/4 USS FLAT WASHER	20	
20	HW-00017	1/4-20 X 7/8 BUTTON SOC CAP BLACK	20	
21	HW-00031	1/4-20 KEPS NUT 18-8 S.S. BLACK	20	



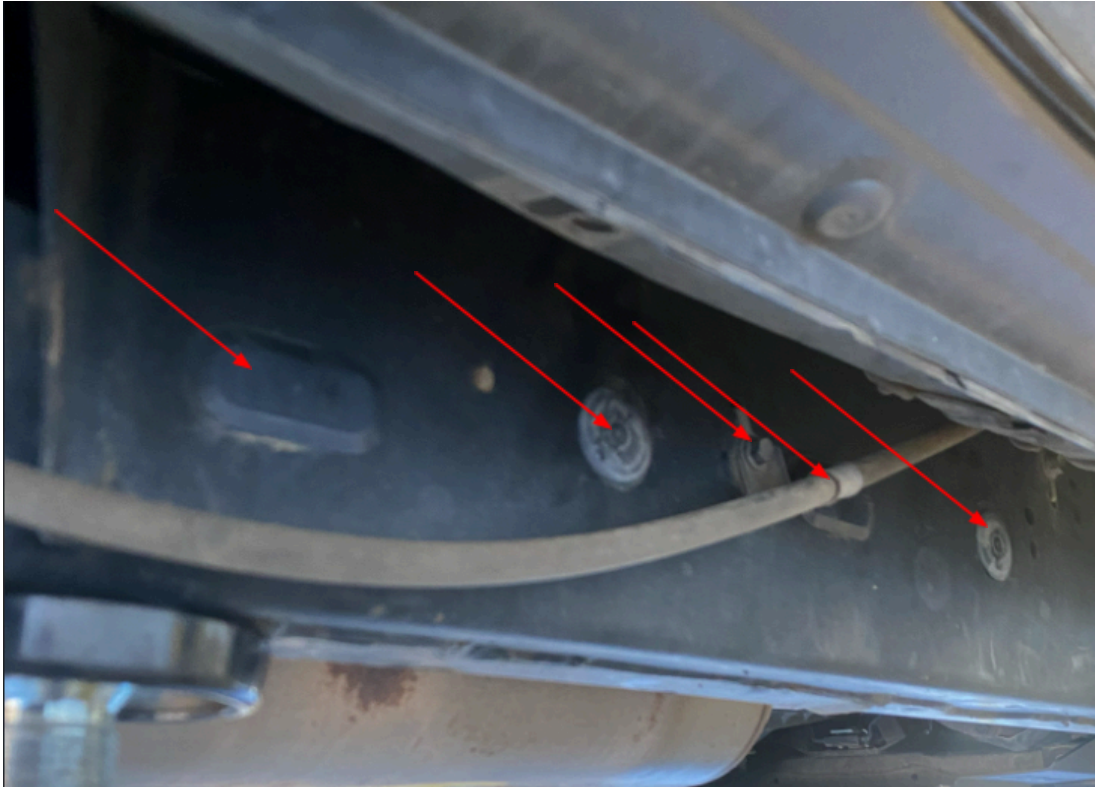
RCI OFFROAD		
TITLE: 08 Sequoia Slider Install Guide		
Item Number	Default	REV 1
SCALE: 1:50	WEIGHT:	SHEET 1 OF 1

Figure 1: BOM

INSTALLATION STEPS:

****Use hand tools, impact wrenches may cause damage if over torqued****

- 1) Begin by unpacking and removing all components and hardware. Please verify that all hardware and mounting components are present. Reference your original order invoice and verify all items are accounted for.
- 2) Prepare the truck's frame for slider installation by removing all plastic clips (outer and inner) and removing the bolts securing the brake lines to the frame.

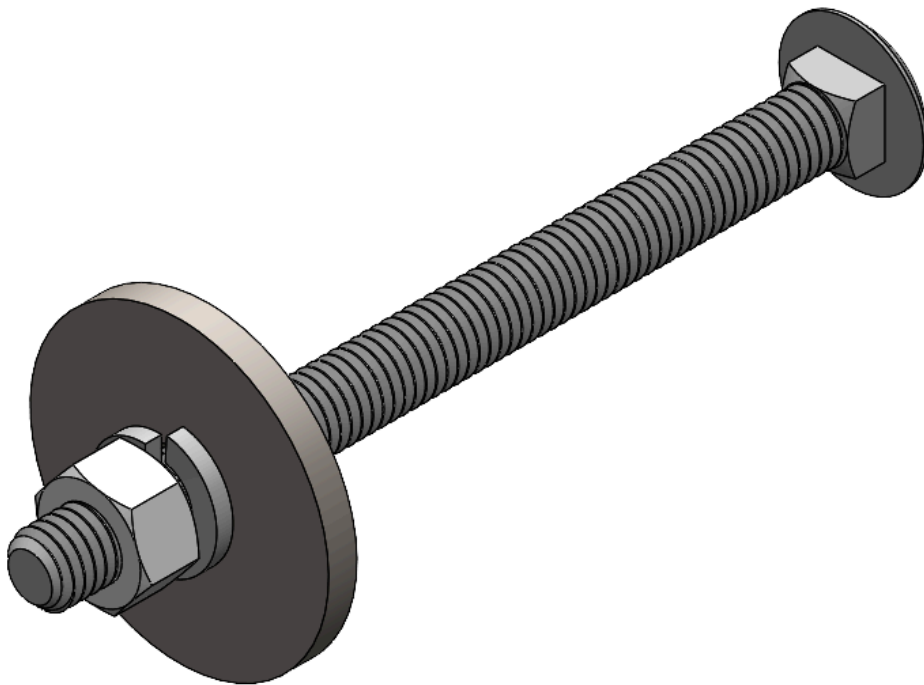


- 3) Collect the Passenger side slider. With the help of a jack stand or friend, lift the slider in place and align the holes on the slider with the holes on the vehicle's frame.

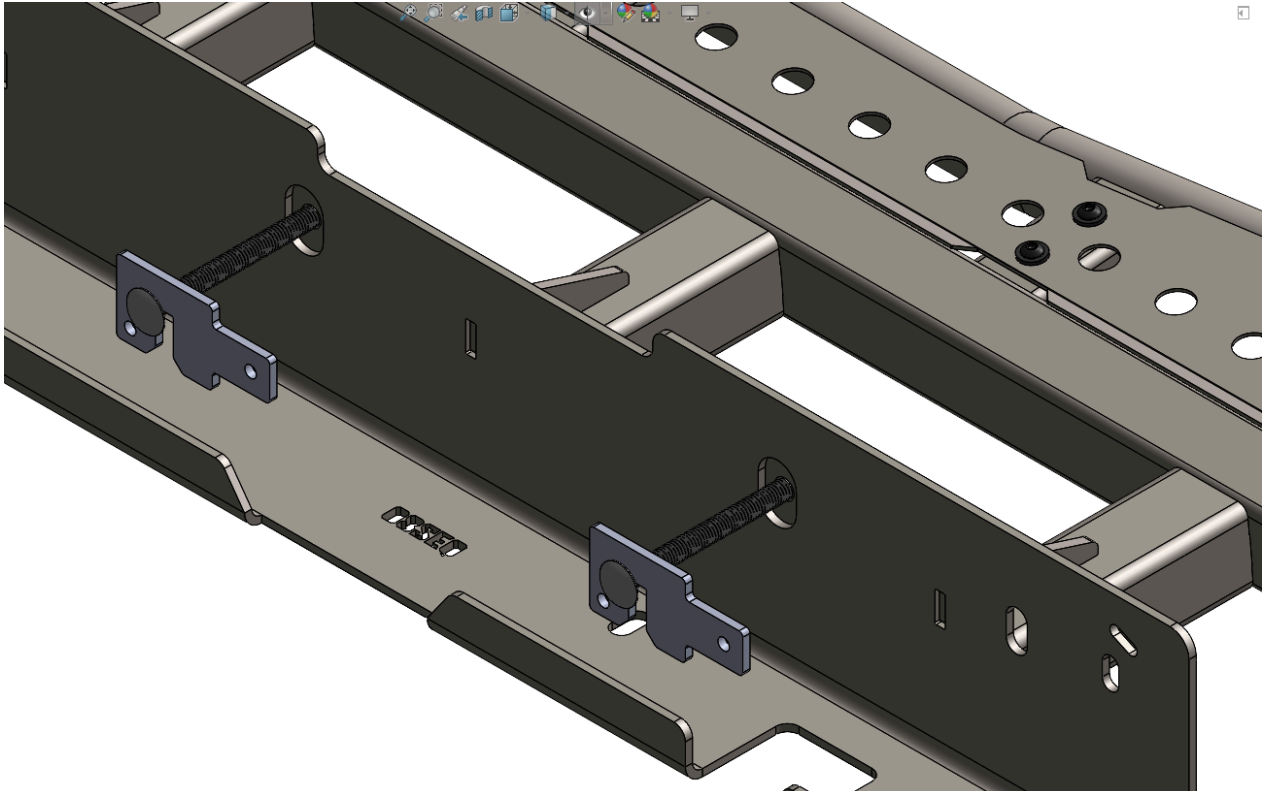
- 4) Re-install the brake line bolt to help align the slider.



- 5) Install three (3) 7/16" carriage bolts with three (3) full moon washers, three (3) 7/16" lock washers, three (3) 7/16" nuts and three (3) carriage bolt plates. Assemble the hardware as depicted below.



- 6) Insert the heads of the carriage bolts through the three big slots on the slider frame plate. Hook the heads of the carriage bolts with the provided carriage bolts plates on the opposite side of the frame.



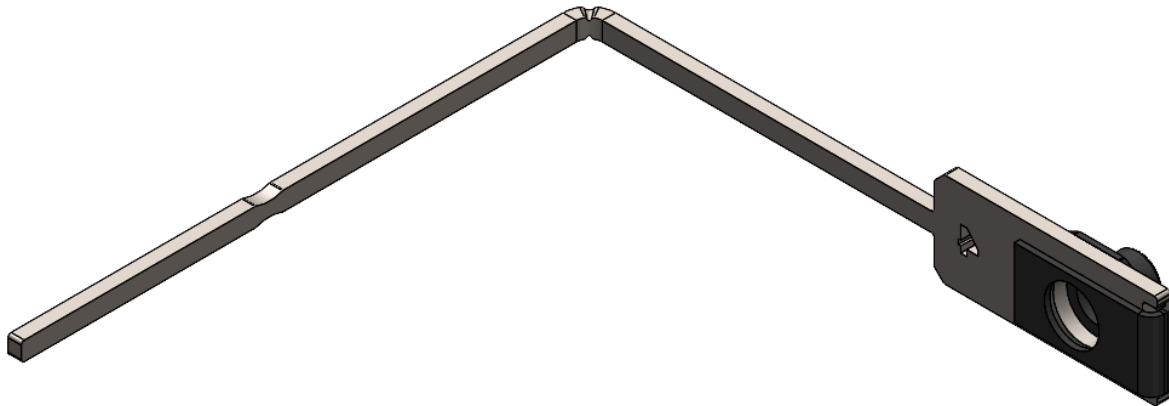


- 7) Apply upward pressure on the slider frame plate so that it is resting on the bottom of the frame. Fully tighten the three 7/16" carriage bolts.

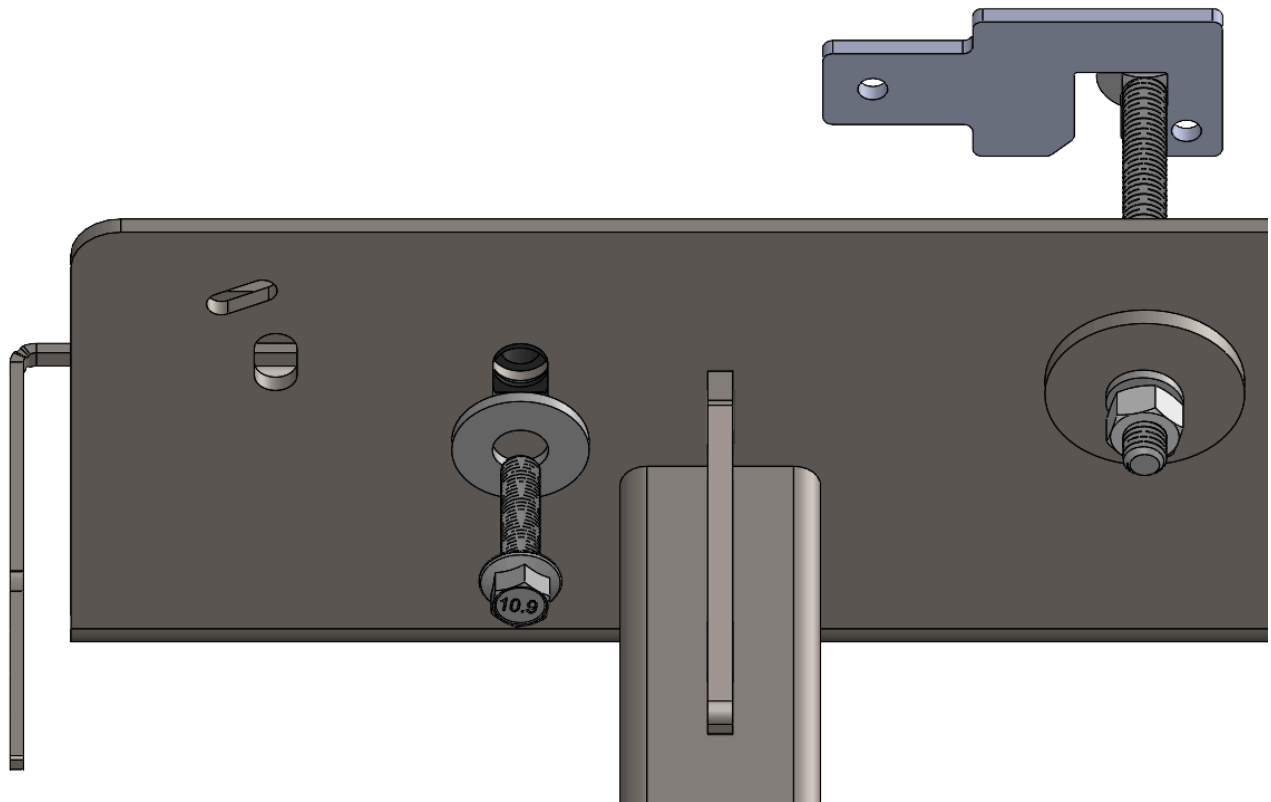
- 8) Collect one mounting plate #4. Measure 5 $\frac{3}{4}$ " from the tail and use a hard surface and bend the mounting plate to 90° as shown below.



- 9) Install one M10 speed clip on the mounting plate.



10) Collect one M10 bolt and 1/2" washer. Insert the mounting plate through the hole near the rearmost slot on the slider frame and install the M10 bolt.



11) Collect the passenger side slider support bracket, one (1) mounting plate #4, one (1) mounting plate #1, two (2) M10 bolts, two (2) M10 speed clips, and two (2) 1/2" washers.

12) Install the speed clips onto the mounting plates.



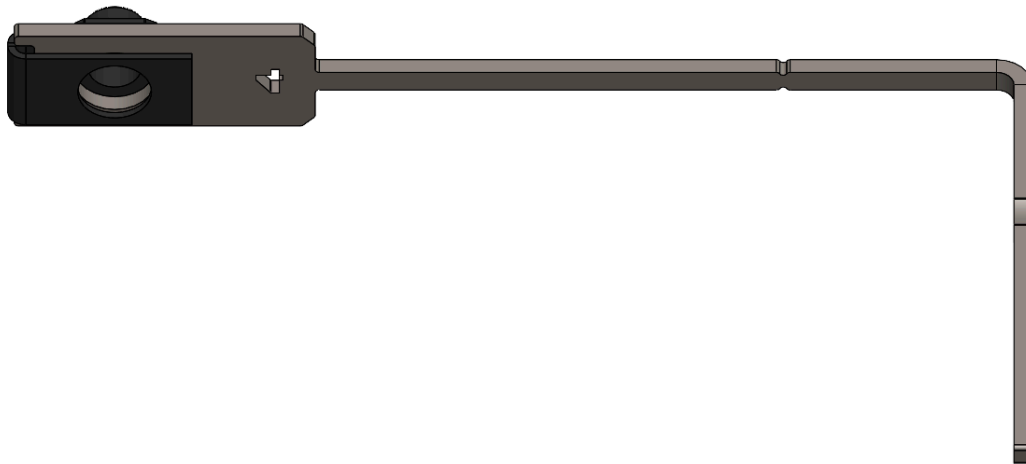
13) Insert mounting plate 1 in the hole on the crossmember and line the threads up with the hole in the bottom of the crossmember as depicted below.



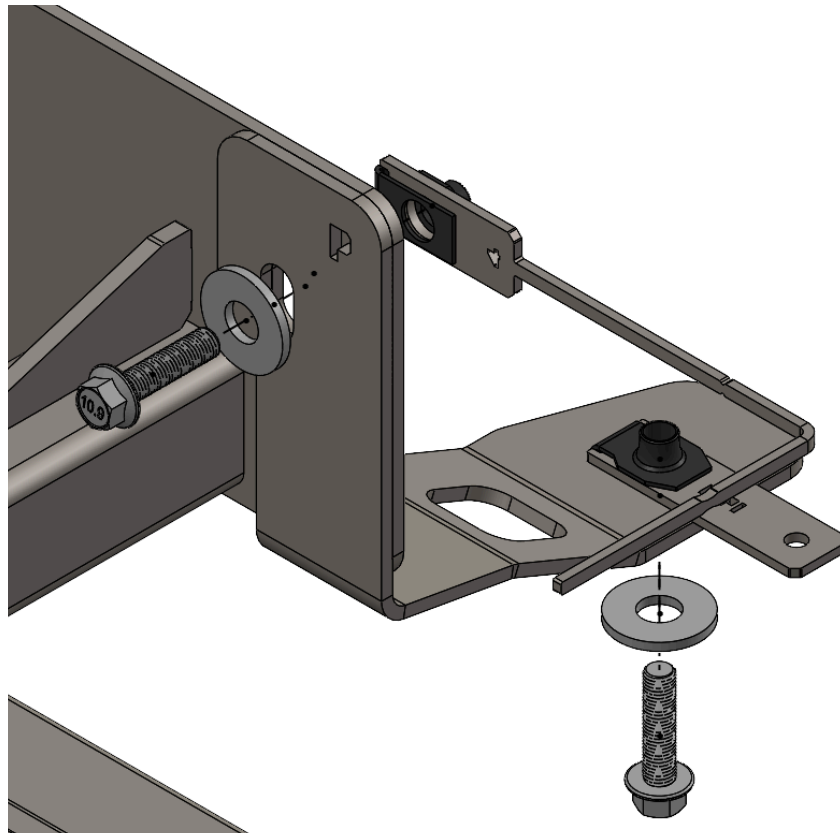
- 14) Collect the appropriate sided support bracket and secure it in place by threading an M10 bolt with 1/2" washer into the bottom mounting location.



- 15) Collect mounting plate 4, measure 4" from the tail and bend it at a 90 degree angle as depicted below.



- 16) Insert mounting plate 4 in the hole on the frame in front of the slider frame plate. Line the threads up with the hole on the front of the slider frame plate. Begin threading one M10 bolt with a washer into the mounting plate.



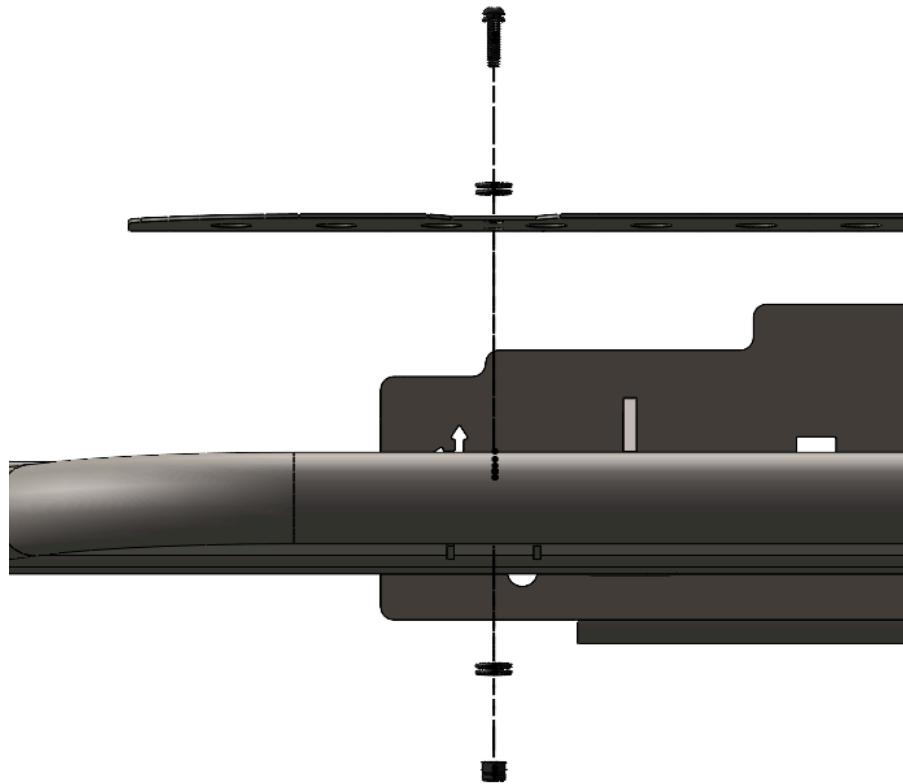
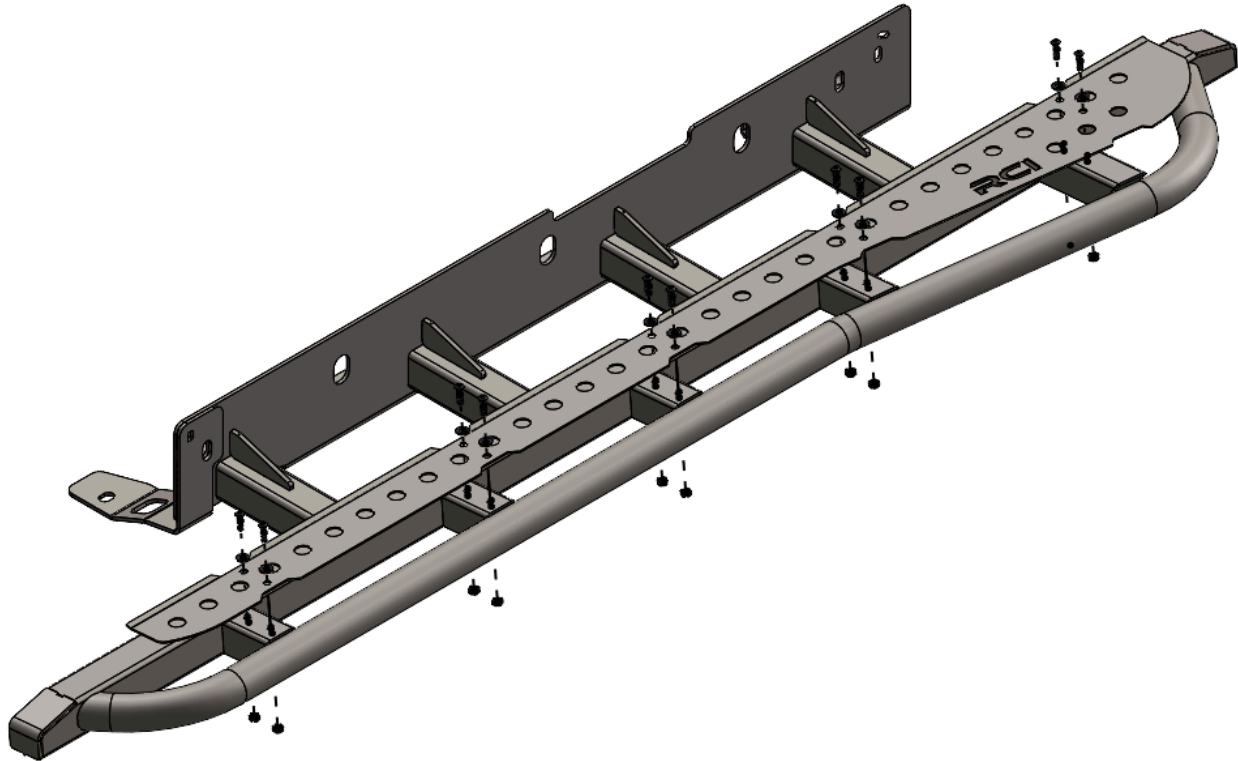
17) Apply upward pressure and fully tighten both M10 bolts.

18) Repeat steps 3-16 on the driver side of the vehicle

19) For the driver side only, install one (1) M8 bolt and washer into the bottom hole on the frameplate.



20) If installing tread plates, collect the appropriate side tread plate and install them with the provided 1/4-20 button head screws with 1/4" washers and 1/4-20 keps nuts.



Enjoy your new RCI protection!



**Share your new install with us on social media!
We love seeing our products out in the wild!**

www.rcimetalworks.com

sales@rcioffroad.com

970-797-3089



Disclaimer: The products sold by RCI Metalworks are intended for off-road use only, should not be modified, and are for use only on the vehicle(s) specifically stated. RCI Metalworks makes no warranties express or implied, including of fitness for a particular purpose or merchantability. RCI Metalworks will not be liable for any damages arising out of the use or misuse of its products. It is the customers' responsibility to ensure the products are safely and properly attached to the vehicle, and all products should be installed by trained professionals. We strive to maintain extremely high quality standards; however, all RCI Metalworks products are individually handcrafted, may vary slightly, and may contain minor imperfections. Due to the nature of raw aluminum, the material may have minor scratches and other blemishes caused by the manufacturing process, especially on the back side of product. RCI Metalworks is constantly seeking to improve its products and reserves the right to make changes to any product.