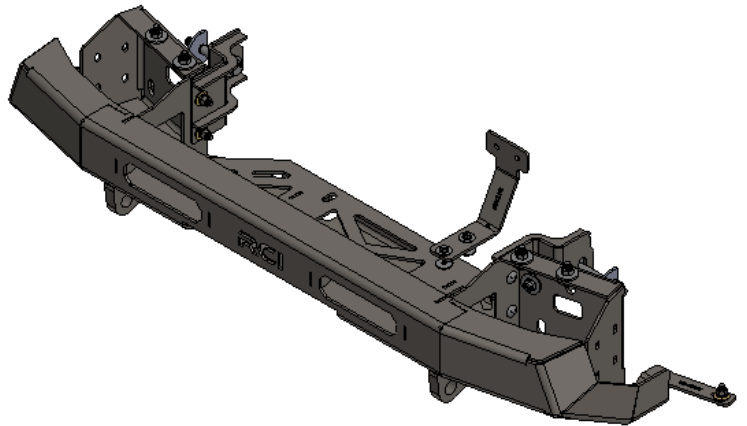


2024 Tacoma Pike Bumper Installation Guide

ITEM NO.	PART NUMBER	DESCRIPTION	QTY.
1	SM-00807	24 Tacoma Pike Bumper	1
2	SM-00819	24 Tacoma Pike-Support Bracket	1
3	SM-00817 & SM-00816	24 Tacoma Pike-Trim Brackets	2
4	SM-00814 & SM-00815	24 Tacoma Pike-Secondary Brackets	2
5	HW-00158	3/8-16 X 1-1/4 CARRIAGE BOLT	6
6	HW-00026	3/8 USS FLAT WASHER THRU HARD	10
7	HW-00029	3/8 SPLIT LOCK WASHER ZINC	8
8	HW-00030	3/8-16 FIN HEX NUT GR-5 ZINC	8
9	HW-00110	M14-1.5 X 100MM HEX CAP SCR	2
10	HW-00112	M14-1.50 NYLON INSERT LOCK NUT	2
11	HW-00022	1/2 USS FLAT WASHER THRU HARD	16
12	HW-00077	M10-1.25 X 30MM HEX FLANGE	6
13	HW-00130	M10 Nylock Nut	6
14	HW-00042	Half Moon Spacer	2
15	HW-00064	3/8-16 X 1-1/8 HEX CAP SCREW	2
16	HW-00169	M6x1x35 Flanged Bolt	2
17	HW-00074	1/4 X 1 FENDER WASHER ZINC	4



RCI OFFROAD		
TITLE: 2024 Tacoma Pike Bumper Install Guide		
Item Number Default		REV 1
DO NOT SCALE DRAWING	SCALE: 1:16	WEIGHT: SHEET 1 OF 1

Figure 1: BOM

INSTALLATION STEPS

****Use hand tools, impact wrenches may cause damage if over torqued****

- 1) Begin by unpacking and removing all components and hardware. Please verify that all hardware and mounting components are present. Reference your original order invoice and verify all items are accounted for.

FACTORY BUMPER REMOVAL

- 2) Remove the factory plastic bumper from the vehicle.
- 3) Start by opening the hood. Remove the plastic air intake and the plastic cover by disconnecting all the trim clips. Reference the image below.
 - a. NOTE: Save all OEM hardware for reinstallation process.

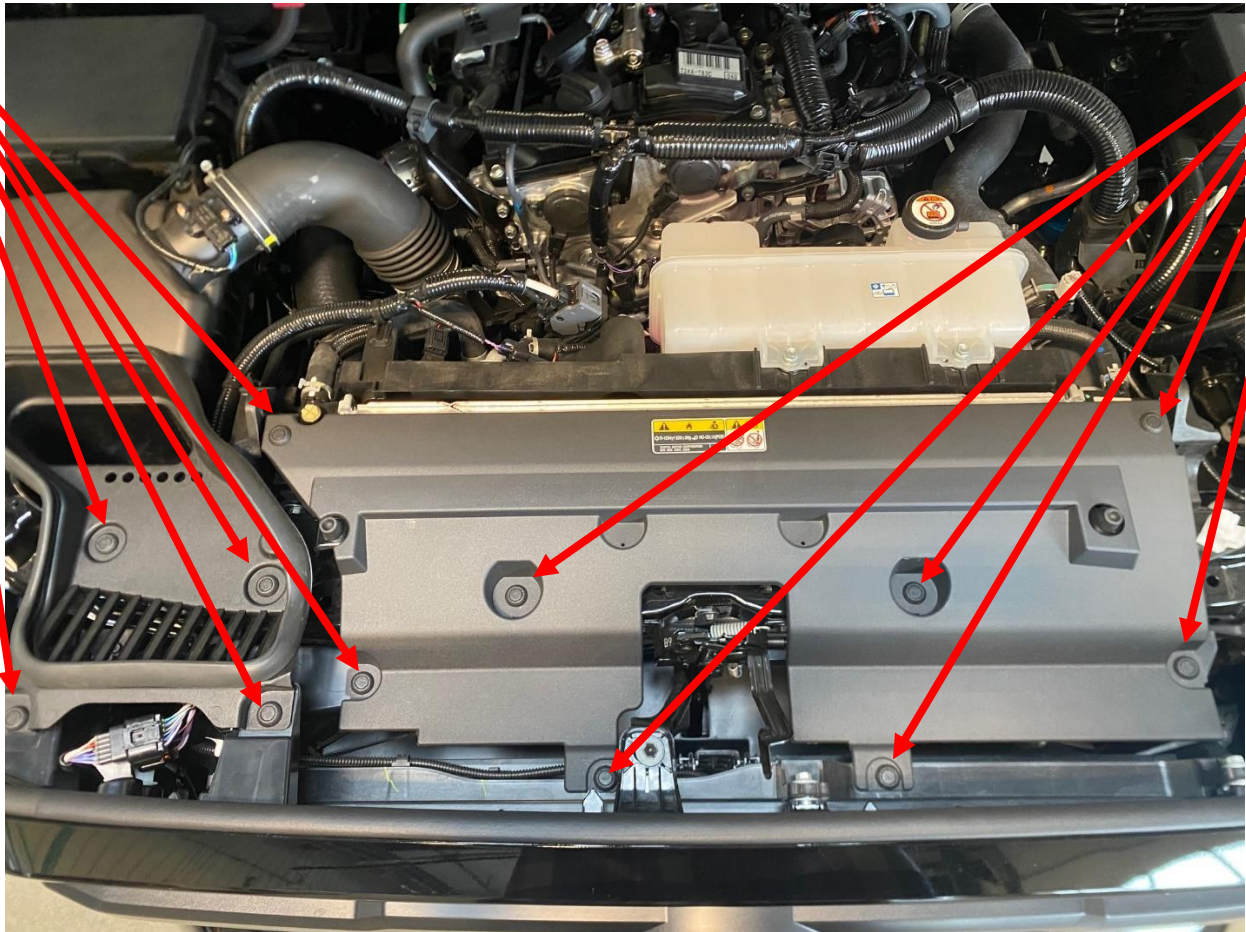


Figure 2: Remove plastic covers.

4) Set aside the plastic. Use a 10mm to remove the three screws securing the grill.

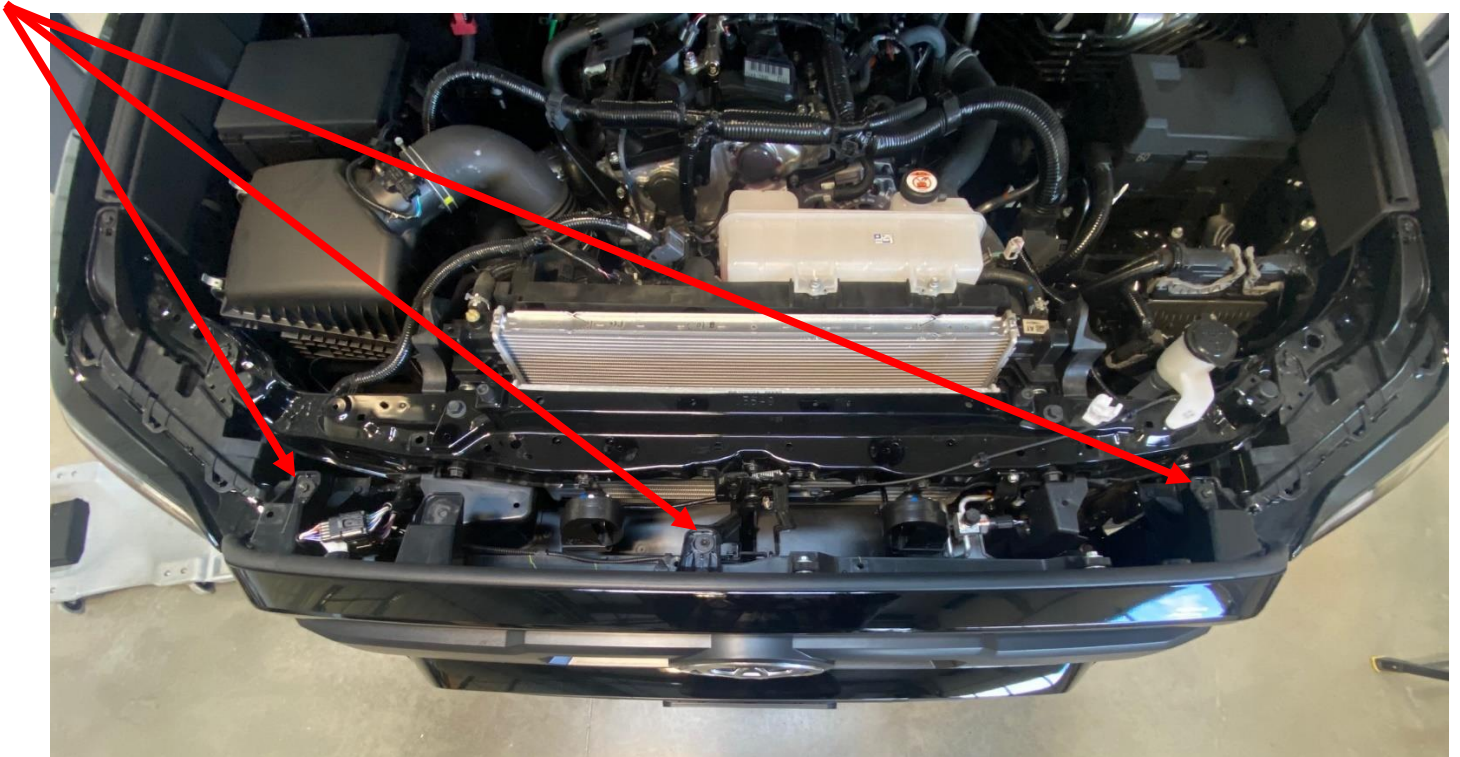


Figure 3: Remove three screws.

5) Disconnect the two wire connectors on the passenger side of the vehicle.

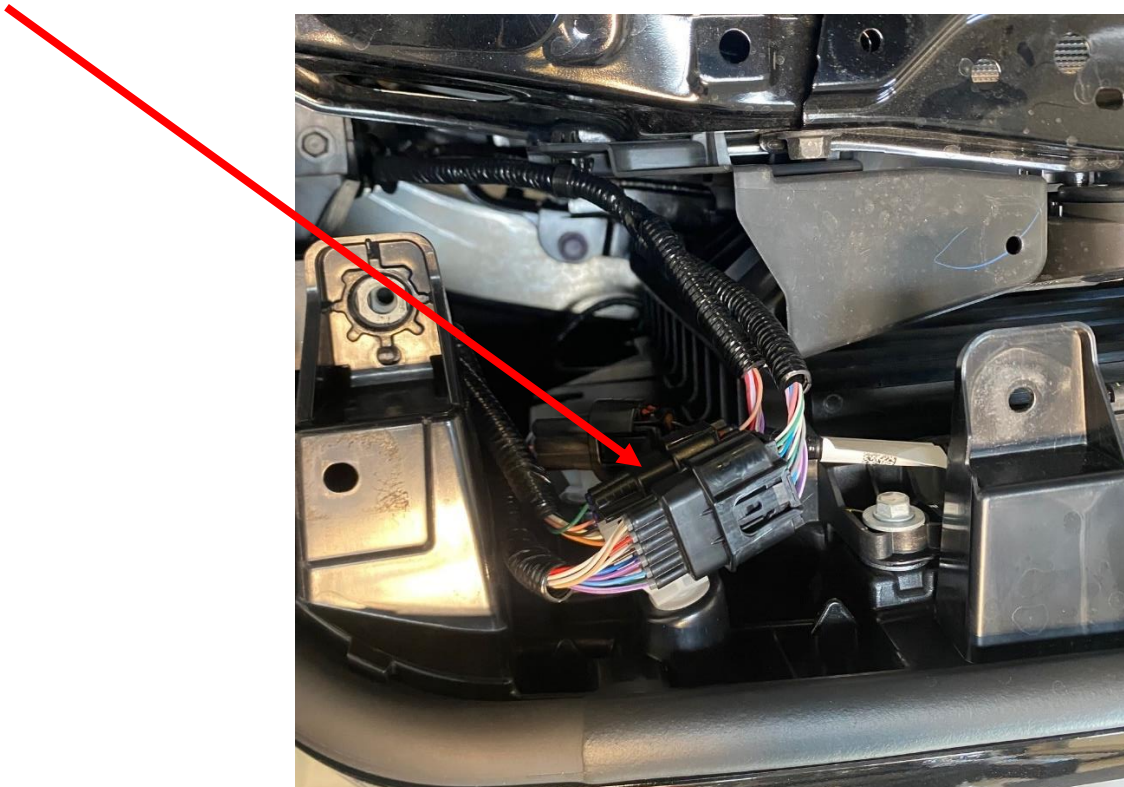


Figure 4: Disconnect two connectors.

- 6) Move under the front bumper and remove all fasteners securing the plastic bumper to the vehicle.

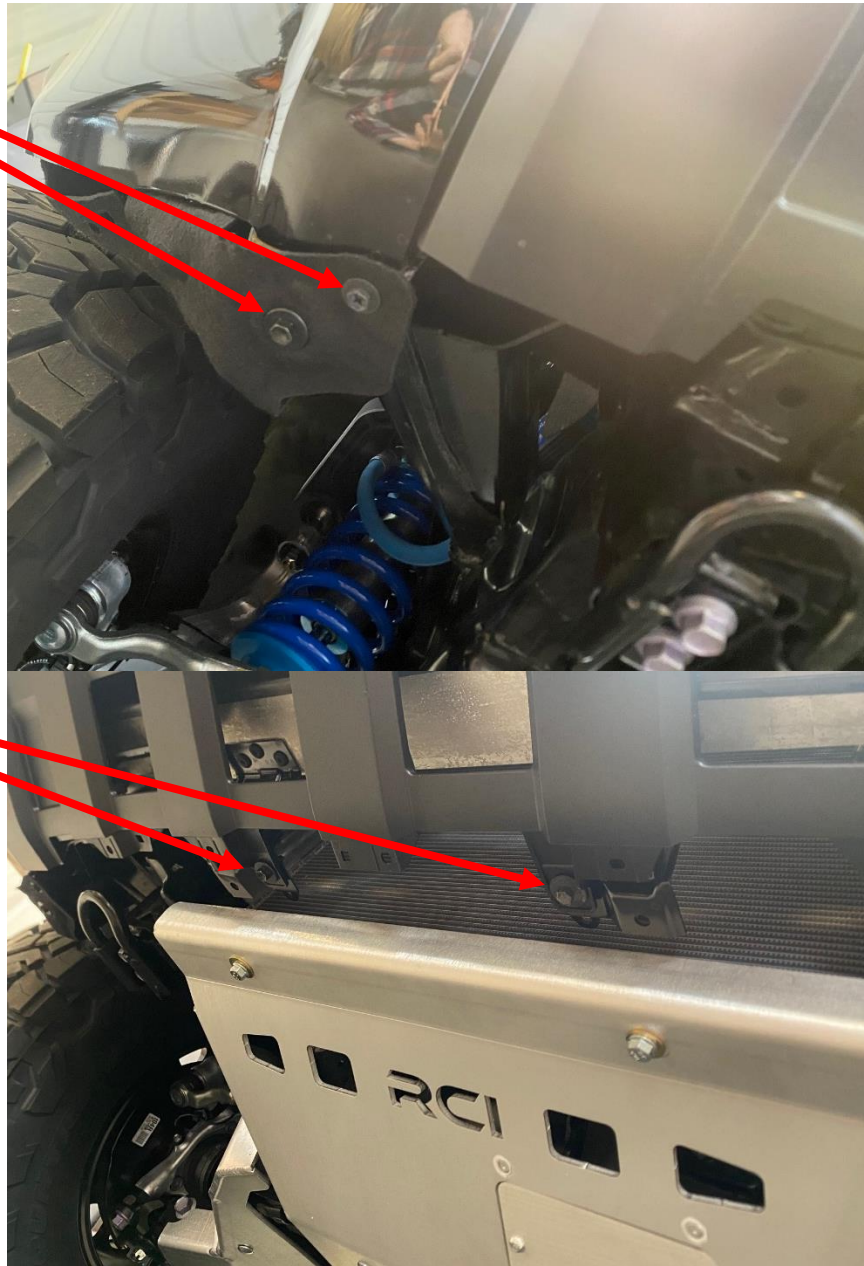


Figure 5: Remove underside fasteners.

- 8) Unclip the front half of the vehicles fenders by pulling on the bottom until it disconnects. Pull back the fender until the Phillips screw is accessible.

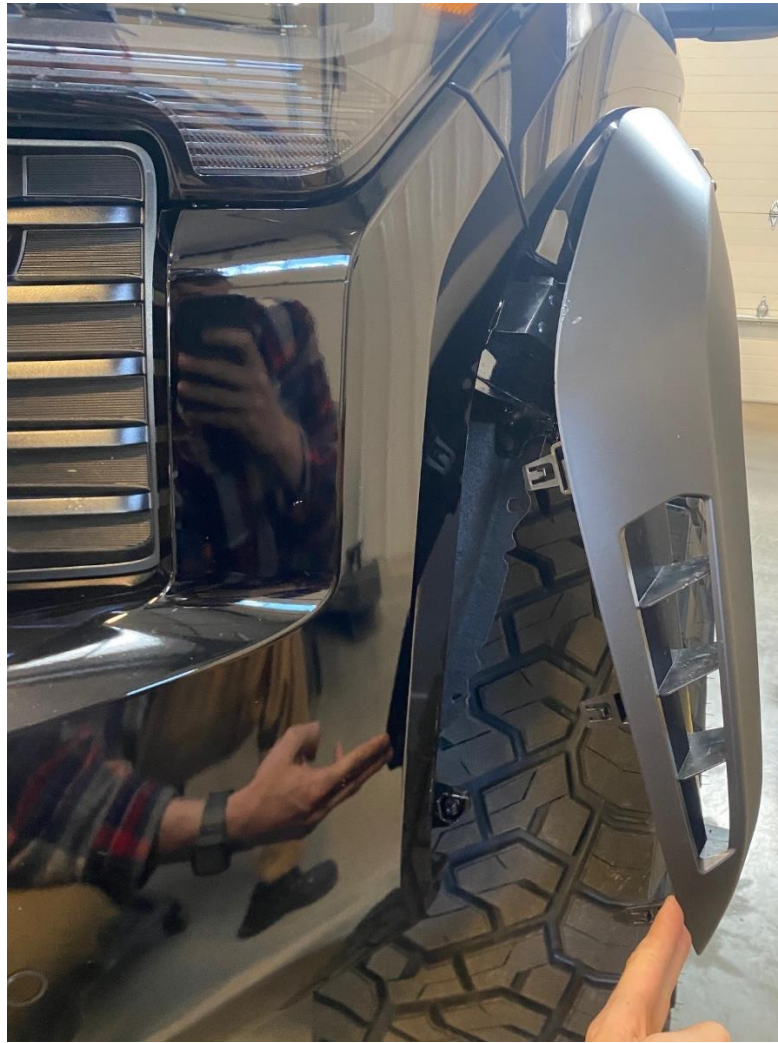


Figure 7: Pull back fenders.

9) Remove the Phillips screw that was uncovered by pulling back the fenders.



Figure 8: Remove Phillips screw.

10) Move to the front of the drill and use a 10mm to remove the 4 screws securing the bumper support bracket. Reference the image below.

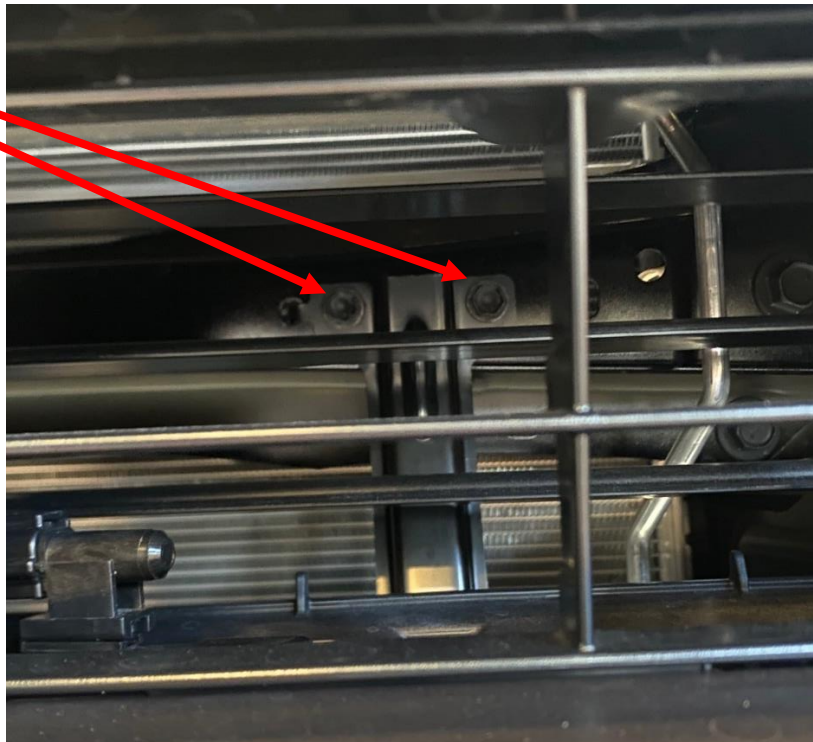


Figure 9: Remove bumper support bracket.

11) With all the hardware removed, disconnect the plastic bumper from the vehicle. Start at the side of the vehicle by the fender and pry until it comes loose. Repeat this on the opposite side of the vehicle. After the bumper comes free set it aside.



Figure 10: Pry on the bumper as depicted.

12) Remove the 8 bolts securing the factory crash bar to the vehicle

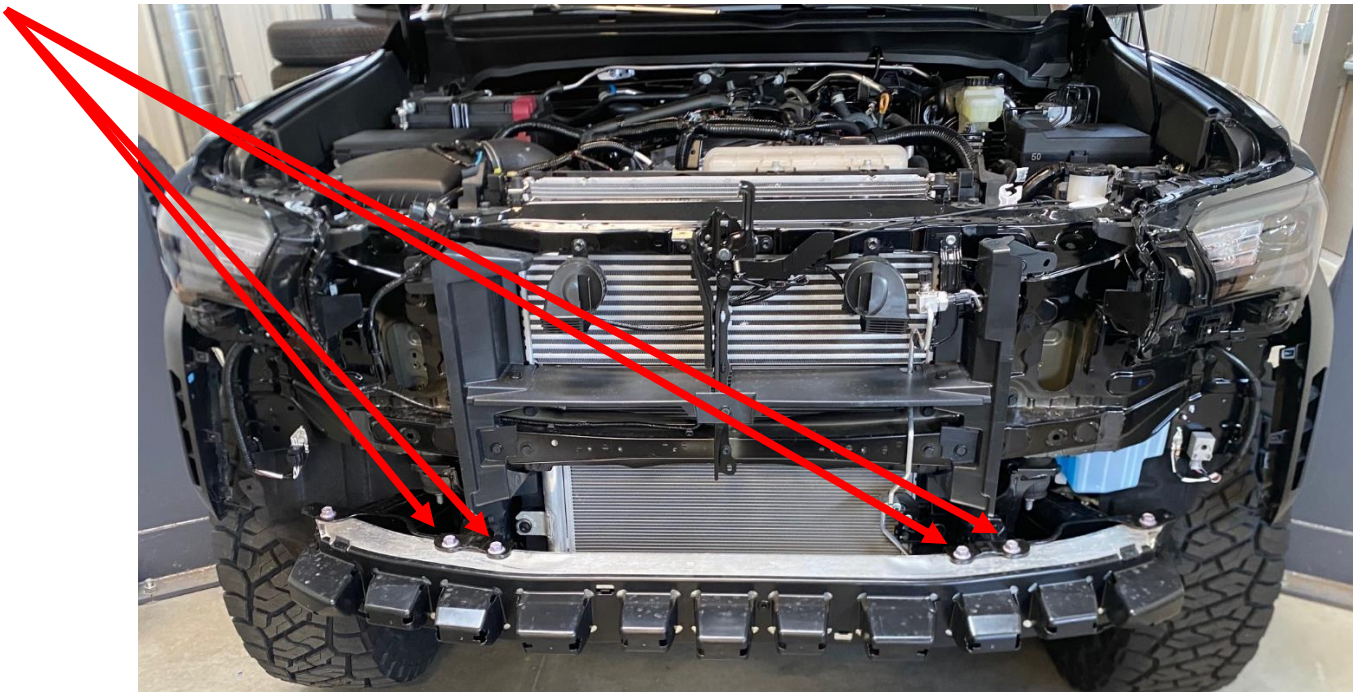


Figure 11: Remove crash bar.

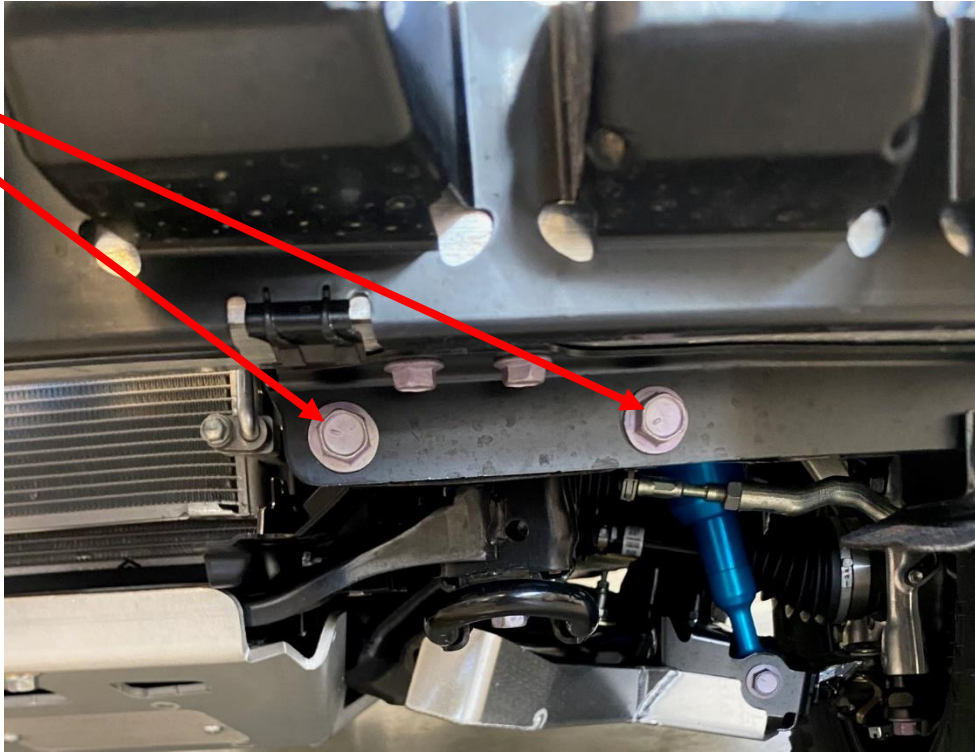


Figure 12: Remove crash bar.

13) The truck should look like the image below.

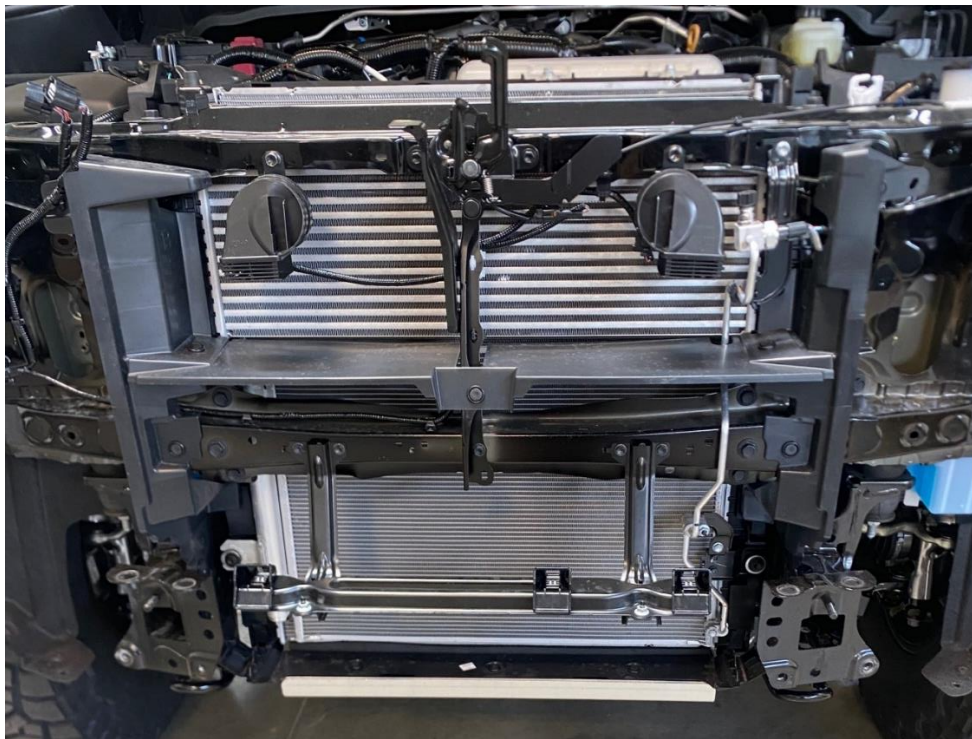


Figure 13: Truck prepared for bumper install.

CUTTING PLASTIC BUMPER

- 14) Flip the OEM bumper so the back side is facing up. Remove the Phillips head screws securing lower cover in place.

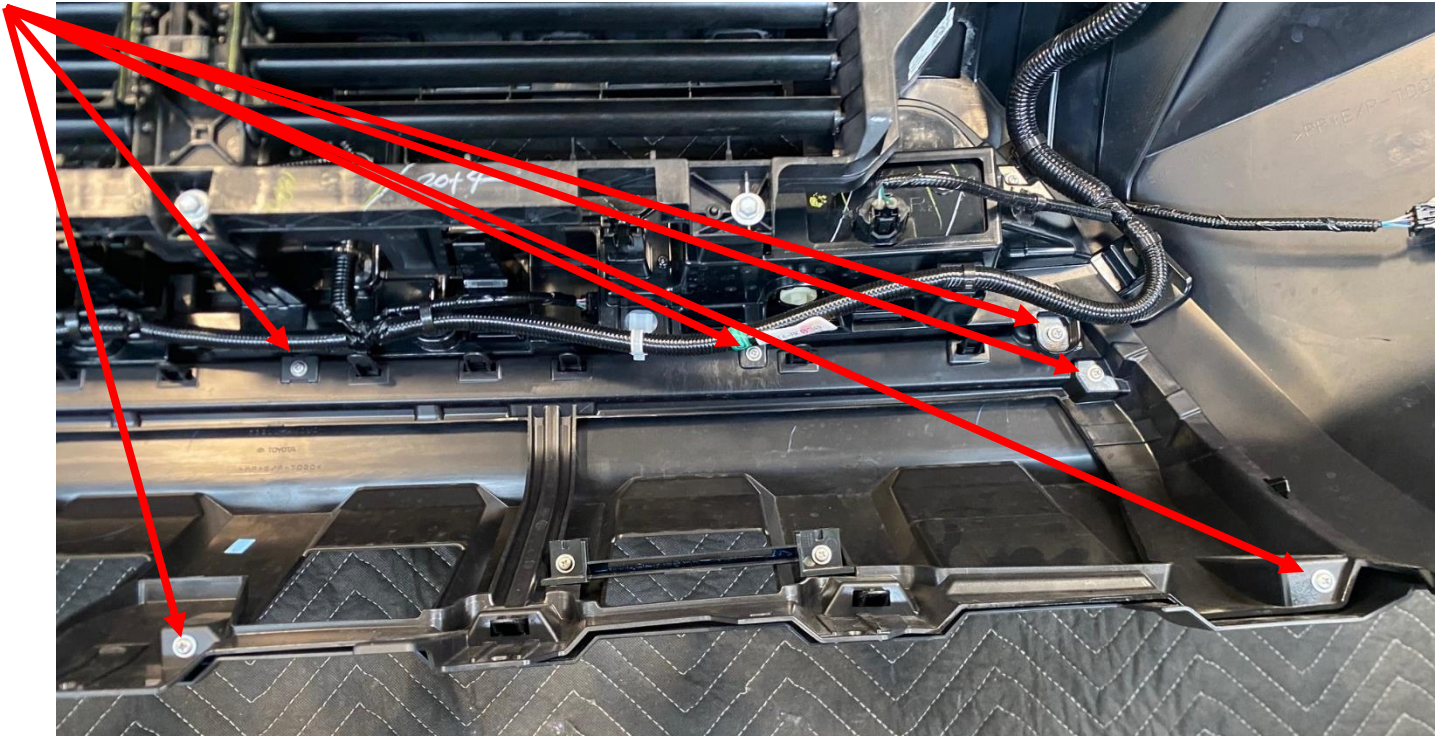
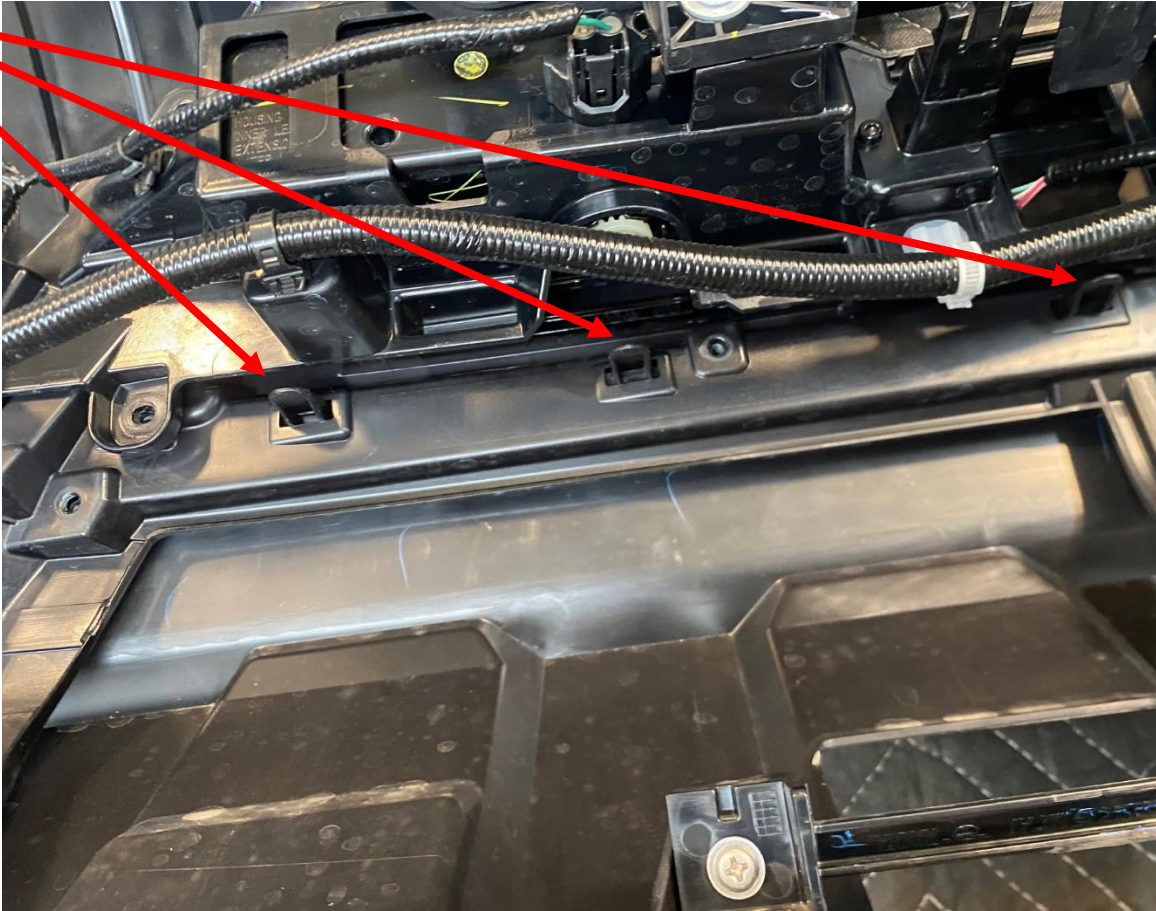


Figure 14: Remove lower bumper cover plate.

- 15) Release all tabs securing the cover plate and remove it from the bumper.



- 16) Remove and set aside the lower bumper cover.
 - a. Remove the license plate mount at this time.



Figure 15: Lower bumper cover.

17) Tape off the bumper over the desired cut line.

Mark the inside edge of the bumper.



Mark directly
under the black
trim.





Figure 16: Tape off bumper.

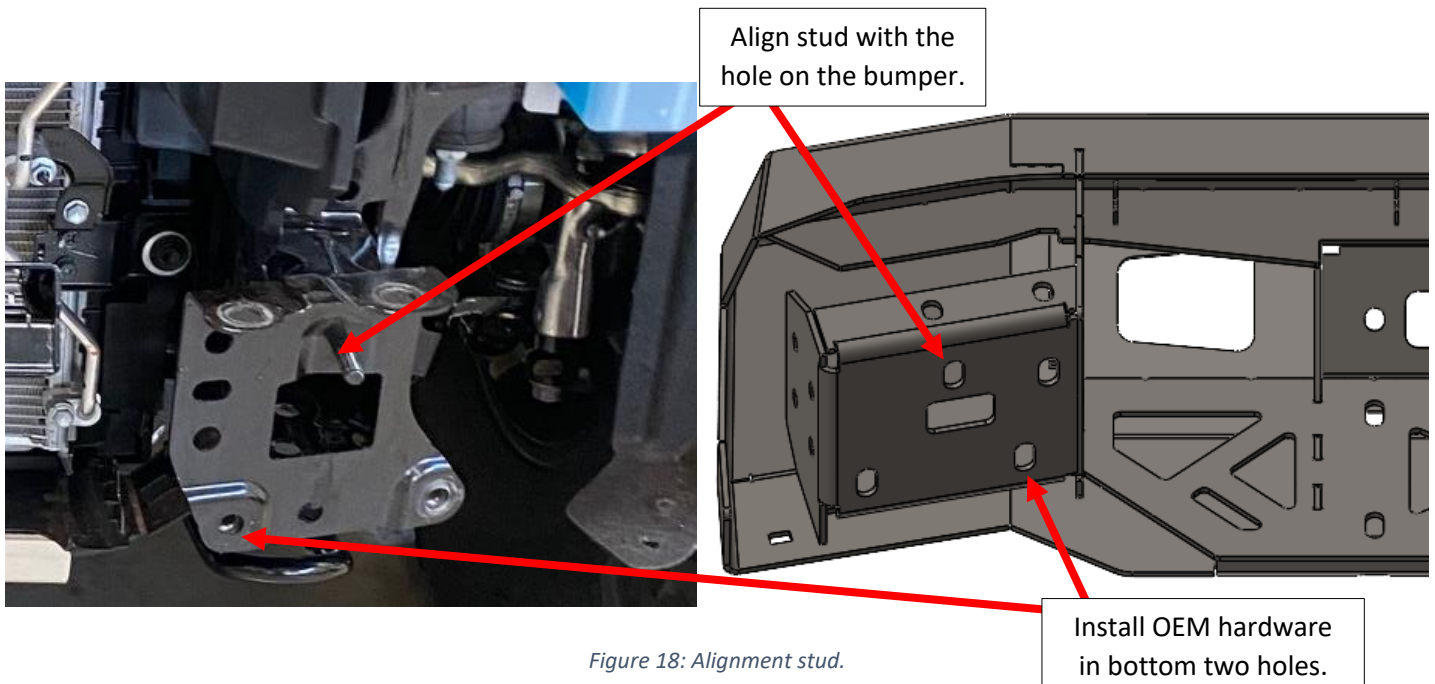
- 18) Use an angle grinder, Dremel, reciprocating saw, or something similar, to perform the cut.
- 19) Clean up the cut edge using a flap disc or file.
 - a. Sand the top edge down until the cut line is smooth.



Figure 17: Example of finished cut.

RCI BUMPER INSTALLATION

- 20) Obtain the RCI bumper along with four (4) of the OEM crash bar bolts and lift the bumper into place.
 - a. NOTE: Use a jack or a friend to help lift the bumper into place
- 21) Use the alignment studs on the truck to get the bumper into place and partially thread the OEM hardware into the two lowest mounting holes on both sides of the truck.



22) Collect four (4) M10 bolts, four (4) M10 lock nuts, and eight (8) 1/2" washers. Loosely install the hardware in the top four horizontal holes on the bumper as depicted below.

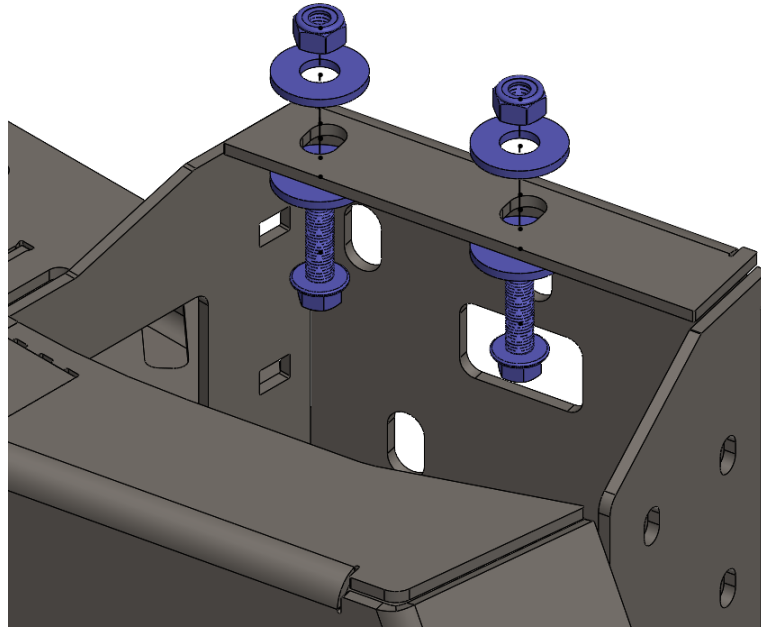


Figure 19: Hardware orientation.

23) Collect two (2) M10 bolts, two (2) M10 lock nuts, and six (6) 1/2" washers. Loosely install the hardware in the top holes on the vertical surface of the bumper as depicted below.
a. NOTE: When installing ensure that one of the washers is sandwiched between the back of the RCI bumper and the mounting face.

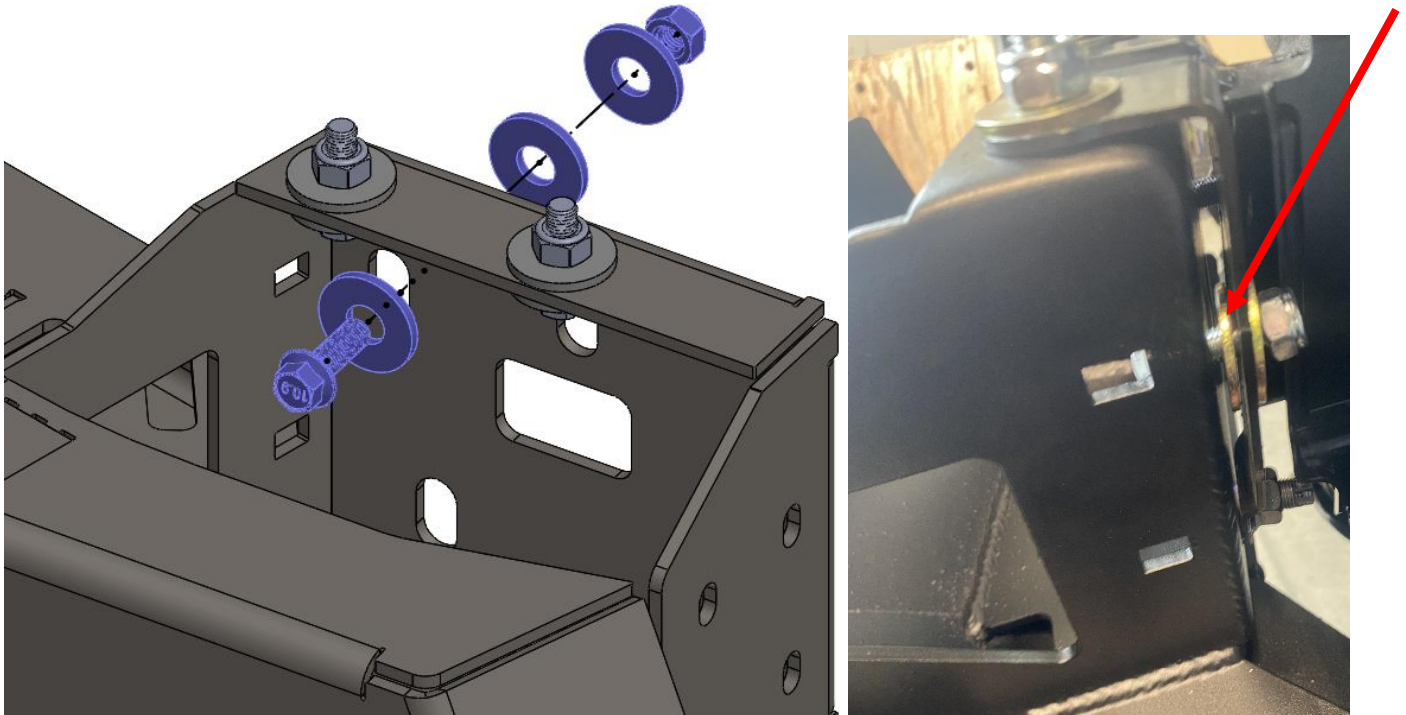


Figure 20: Hardware orientation.

24) Follow the order depicted below when tightening the bumper to ensure a proper reveal when the installation is complete.

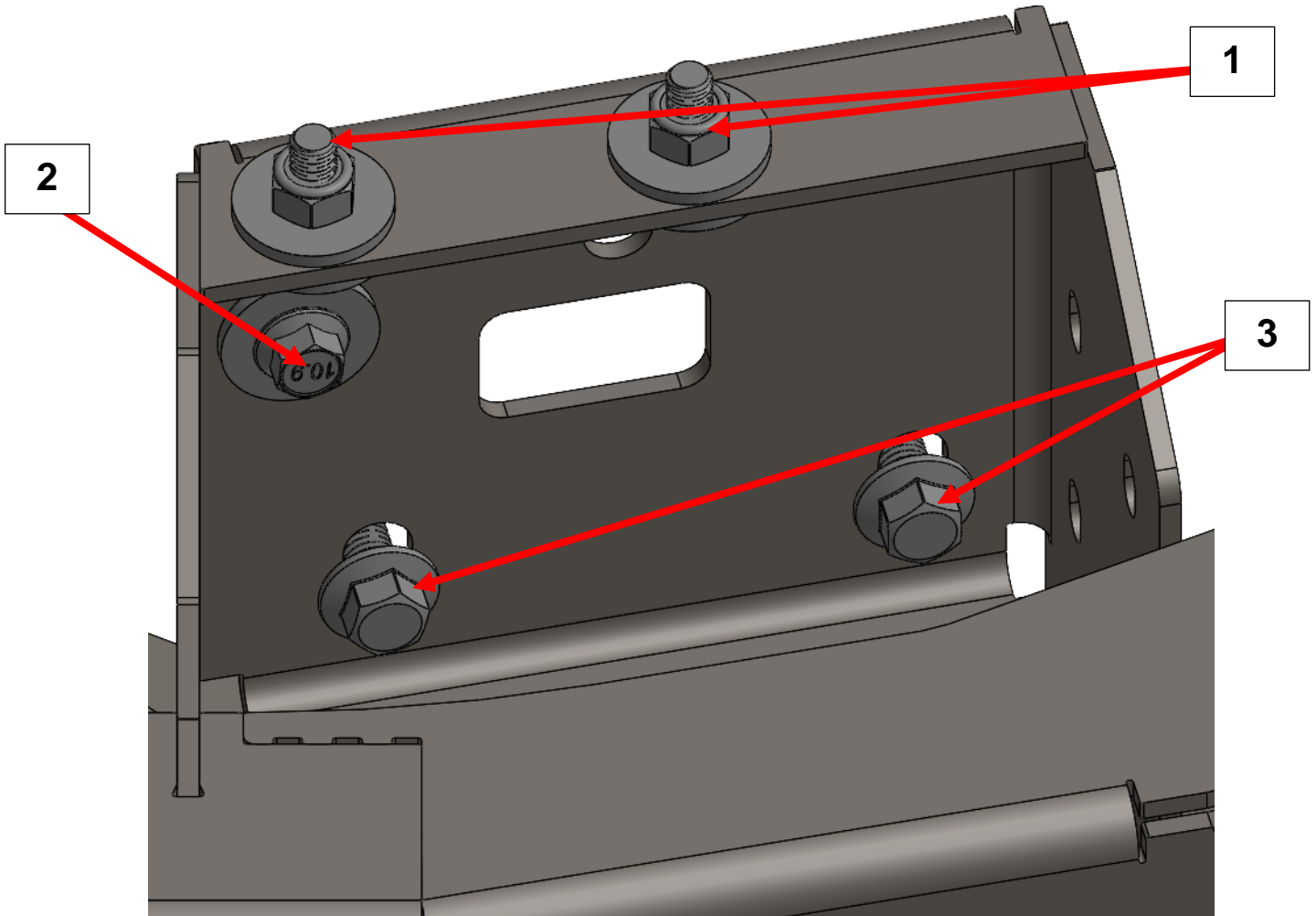


Figure 21: Hardware tightening order.

25) Next install the two secondary brackets.

26) Remove the two clips depicted below on the vehicle before installing the brackets.

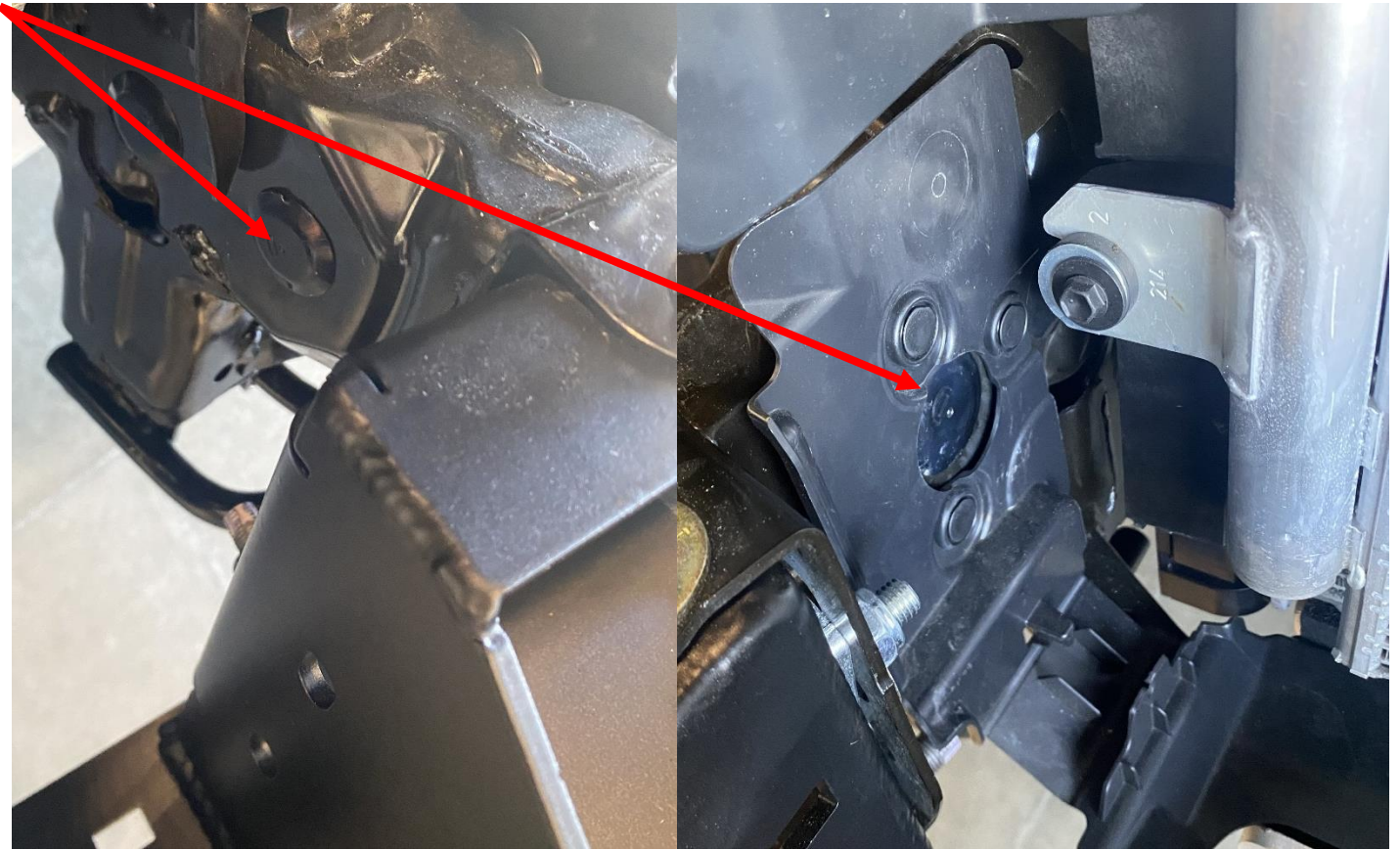


Figure 22: Remove clips.

27) Collect one of the included secondary brackets along with two (2) 3/8" carriage bolts, two (2) 3/8" lock-washers, two (2) 3/8" nuts, four (4) 3/8" washers, one (1) M14 x 100mm bolt, one (1) M14 locknut, one (1) 1/2" washer, and one (1) half moon spacer. Install the bracket as depicted below.

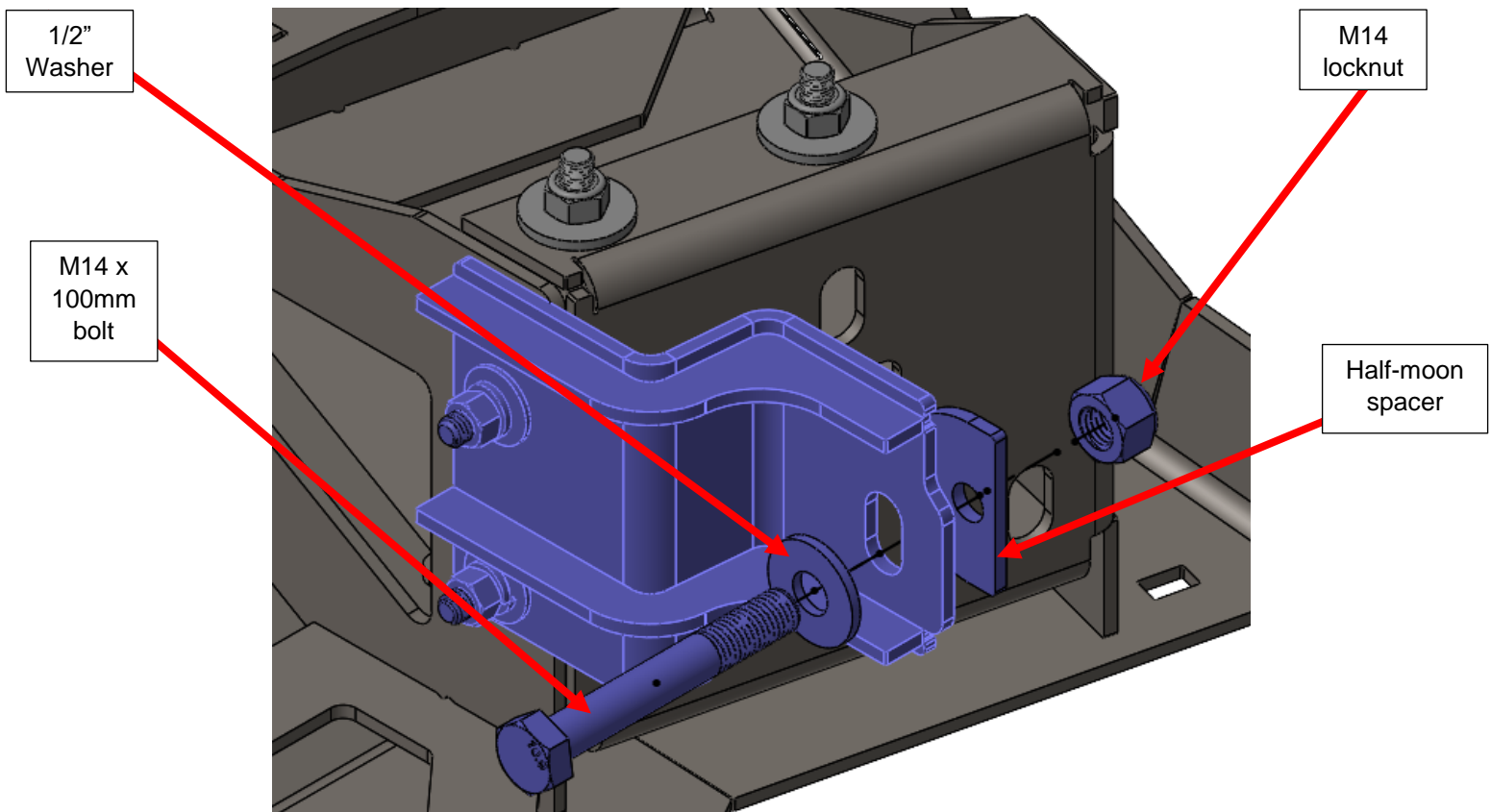
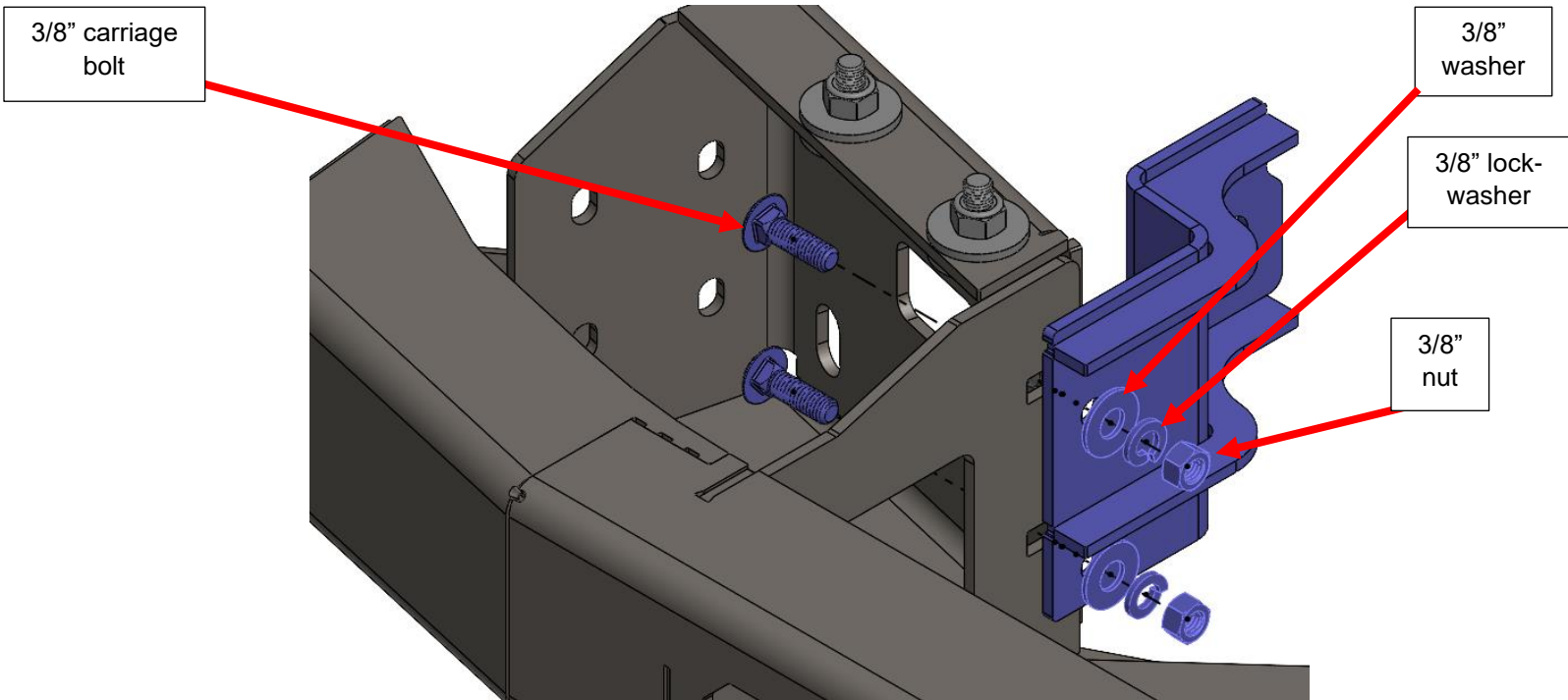




Figure 23: Correct installation of secondary bracket.

28) Repeat the install for the opposite side of the vehicle.

29) If applicable, install a winch and light bars at this time.



Figure 24: Example of winch and lights installed.

- 30) If installing a winch, the included support bracket will need to be installed so that the winch clutch can be accessed.
- 31) Collect the provided support bracket along with two (2) M6 x 35mm bolts, and four (4) ¼" fender washers. OEM support bracket that was removed earlier and remove the driver side mount.
 - a. This bracket may still be clipped into the plastic bumper.



Figure 25: Remove the driver side mount.

- 32) Reinstall the support bracket on the vehicle using the provided bracket on the driver side. Reuse the OEM nuts to secure the new bracket.

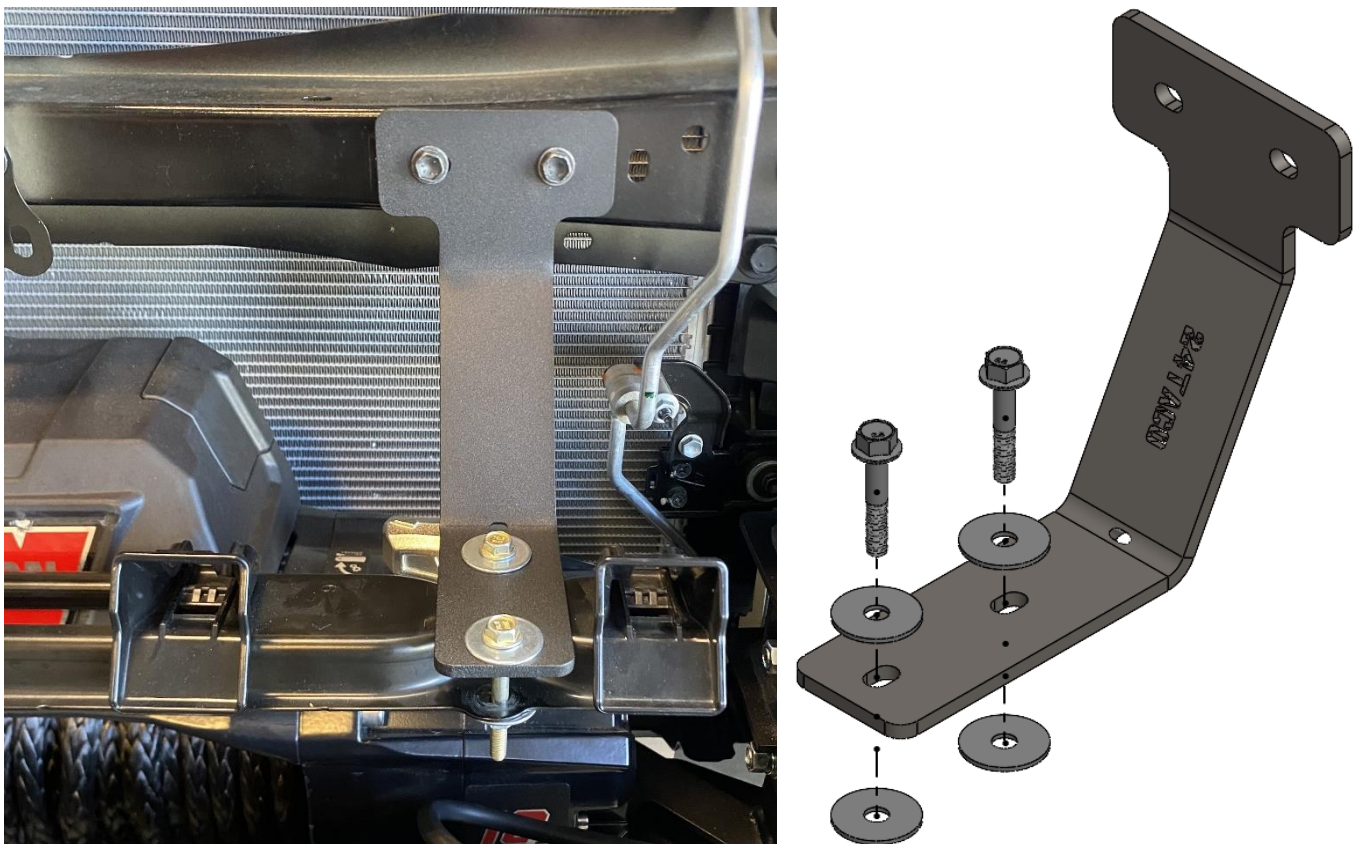


Figure 26: Correctly installed support bracket.

REINSTALL PLASTIC BUMPER

- 33) Collect the OEM plastic bumper and reinstall it over the RCI Pike bumper. Be careful not to scratch the headlights or fenders when reinstalling the bumper.
- 34) Clip the bumper into place and ensure that everything lines up well. Reference the image below.



Figure 27: Correct bumper installation.

- 35) Repeat the *FACTROY BUMPER REMOVAL* steps in reverse to reinstall all factory hardware.
 - a. NOTE: Remember to reconnect the wiring harness behind the grill on the passenger side of the vehicle.

- 36) Once the bumper is fully reinstalled, collect one of the included trim brackets along with one (1) 3/8" carriage bolt, one (1) 3/8" hex bolt, three (3) 3/8" washers, two (2) 3/8" lock-washers, and two (2) 3/8" nuts. Install the bracket as depicted below
- NOTE: The brackets will have a **P** or **D** to indicate which side of the vehicle it's for.

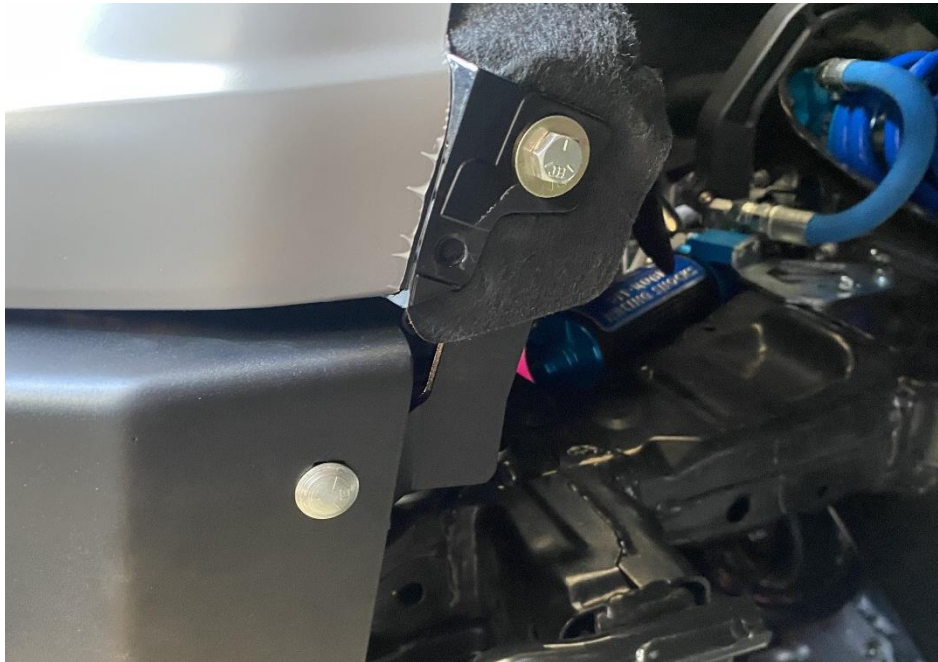
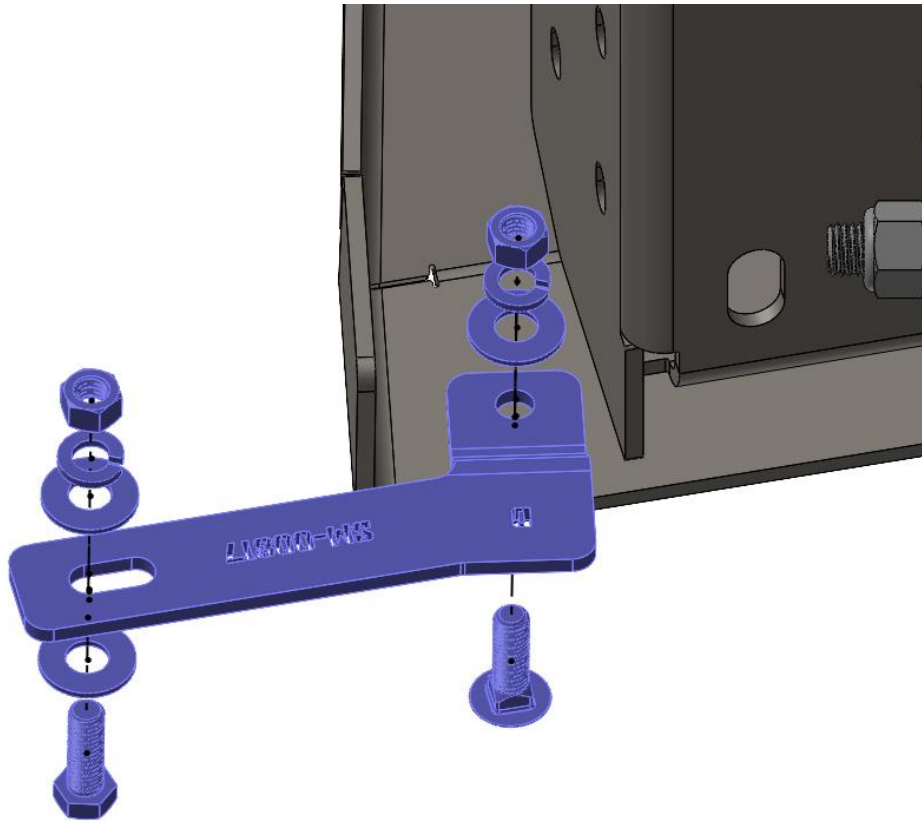


Figure 28: Correct installation of Driver side trim bracket.

- 37) Complete the installation by doing a once over of the vehicle to ensure all hardware is tight and accounted for.

Enjoy your new RCI protection!



Share your new install with us on social media!

We love seeing our products out in the wild!

www.rcimetalworks.com

sales@rcioffroad.com

970-797-3089



Disclaimer: The products sold by RCI Metalworks are intended for off-road use only, should not be modified, and are for use only on the vehicle(s) specifically stated. RCI Metalworks makes no warranties express or implied, including of fitness for a particular purpose or merchantability. RCI Metalworks will not be liable for any damages arising out of the use or misuse of its products. It is the customers' responsibility to ensure the products are safely and properly attached to the vehicle, and all products should be installed by trained professionals. We strive to maintain extremely high quality standards; however, all RCI Metalworks products are individually handcrafted, may vary slightly, and may contain minor imperfections. Due to the nature of raw aluminum, the material may have minor scratches and other blemishes caused by the manufacturing process, especially on the back side of product. RCI Metalworks is constantly seeking to improve its products and reserves the right to make changes to any product.