

RCI 24+ Tacoma Shock Mount Skid Plate Installation Guide

ITEM NO.	PART NUMBER	DESCRIPTION	QTY.
1	SM-00806	24 Tacoma Lower Link Skid Plate	2
2	HK-00135	24 TACO LOWER LINK HARDWARE KIT	1
2.1	HW-00161	3/8-16 X 4-1/4 CARRIAGE BOLT	4
2.2	HW-00030	3/8-16 FIN HEX NUT GR-5 ZINC	4
2.3	HW-00029	3/8 SPLIT LOCK WASHER ZINC	4
2.4	HW-00026	3/8 USS FLAT WASHER THRU HARD	4
3	BX-00006	12x4x4 Ranger Cat/ Hi Lift Mounts Box	1



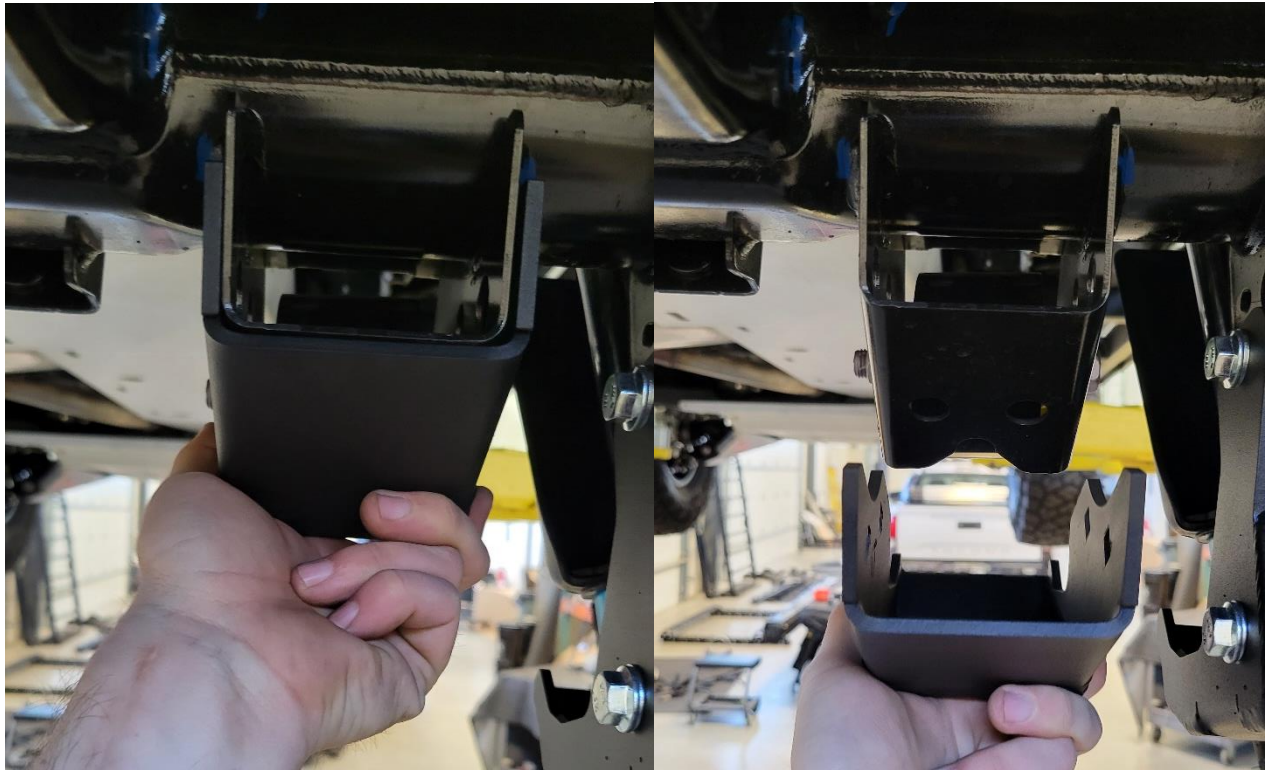
UNLESS OTHERWISE SPECIFIED:	PROPRIETARY AND CONFIDENTIAL	NAME	DATE
		DRAWN	06/18/2024
		KL	
DIMENSIONS ARE IN INCHES TOLERANCES: FRACTIONAL: ±0.010 ANGULAR: BEND ±0.5 TWO PLACE DECIMAL ±0.015 THREE PLACE DECIMAL ±0.010		THE INFORMATION CONTAINED IN THIS DRAWING IS THE SOLE PROPERTY OF RCI OFFROAD. ANY REPRODUCTION IN PART OR AS A WHOLE WITHOUT THE WRITTEN PERMISSION OF RCI OFFROAD IS PROHIBITED.	
		Export Date	
		6/24/2024	
RCI OFFROAD			
TITLE:			
TACO-24-LOWERLINK BOM			
Item Number			REV
FG-00482			1
DO NOT SCALE DRAWING		SCALE: 1:4	WEIGHT: SHEET 1 OF 8

Figure 1: BOM

INSTALLATION STEPS:

****Use hand tools, impact wrenches may cause damage if over torqued.**

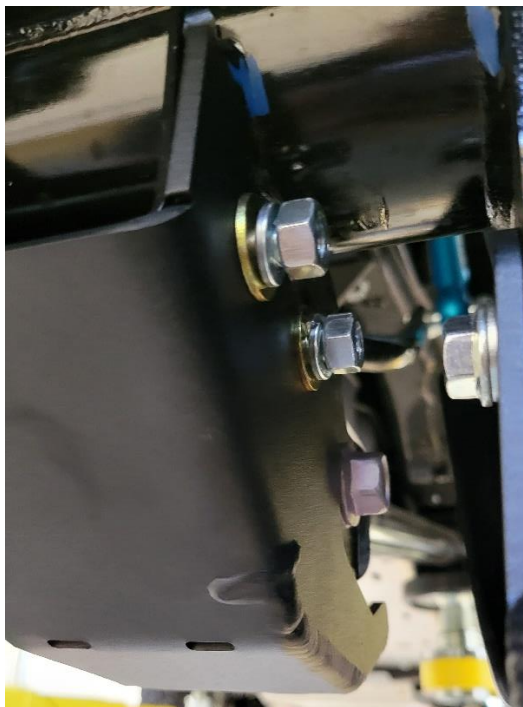
1. Begin by unpacking and removing all components and hardware. Please verify that all hardware, components, and mounting components are present. Please reference your original order invoice and verify all items are accounted for.
 - a. Removing the wheels and tires from the rear axle will make the installation process significantly easier; however, it is not strictly necessary, and installation can be performed with the wheels and tires on the vehicle and the vehicle
2. Hold one of the RCI 24 Tacoma lower link skid plates up to the lower trailing arm mount on the underside of the rear axle.



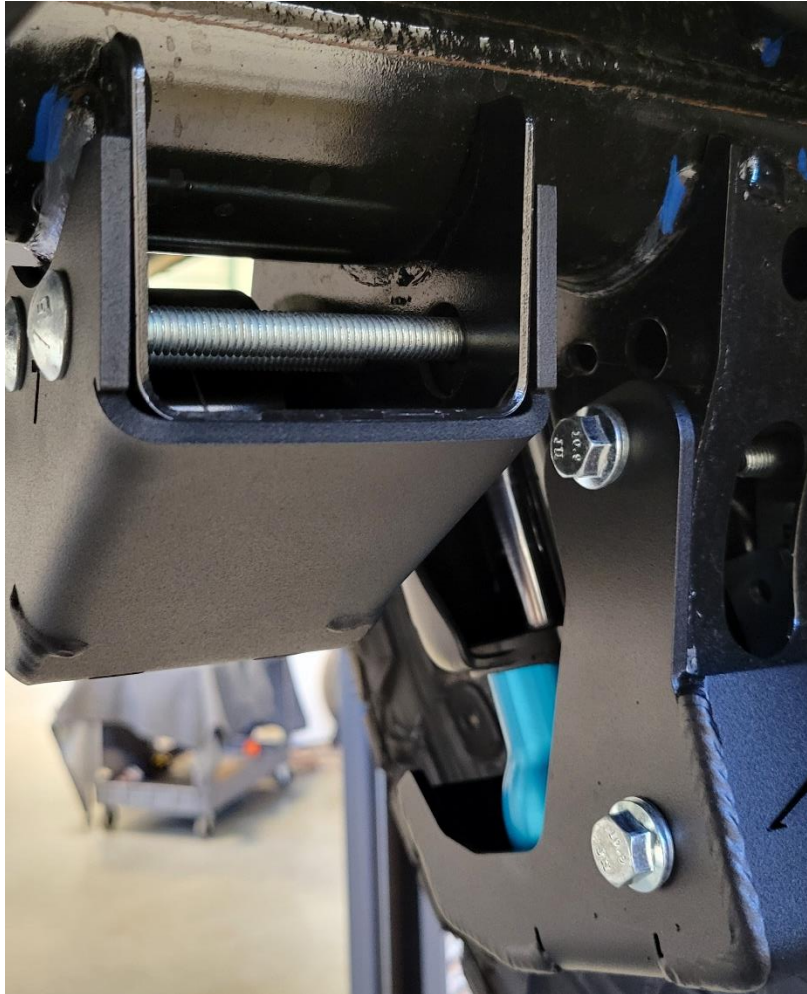
3. Insert an included carriage bolts into each of the square holes on the vertical flange of the RCI lower link skid plate. Insert the carriage bolts from the differential side towards the shock mount side



4. Loosely thread the included flat washer, split washer, and nut onto the carriage bolts.



5. Align the rear flanges or the RCI lower link skid plate with the rear of the mount as shown and tighten all hardware.



6. Repeat steps 2-5 for the remaining trailing arm mount on the opposite side of the vehicle's rear axle.



Enjoy your new RCI protection!



Share your new install with us on social media!

We love seeing our products out in the wild!

www.rcimetalworks.com

sales@rcioffroad.com

970-797-3089

REV: 1 | 9/29/2022



Disclaimer: The products sold by RCI Metalworks are intended for off-road use only, should not be modified, and are for use only on the vehicle(s) specifically stated. RCI Metalworks makes no warranties express or implied, including of fitness for a particular purpose or merchantability. RCI Metalworks will not be liable for any damages arising out of the use or misuse of its products. It is the customers' responsibility to ensure the products are safely and properly attached to the vehicle, and all products should be installed by trained professionals. We strive to maintain extremely high-quality standards; however, all RCI Metalworks products are individually handcrafted, may vary slightly, and may contain minor imperfections. Due to the nature of raw aluminum, the material may have minor scratches and other blemishes caused by the manufacturing process, especially on the back side of product. RCI Metalworks is constantly seeking to improve its products and reserves the right to make changes to any product.