

## RCI 22+Tundra/23+Sequoia 22gal Fuel Tank Skid Plate Installation Guide

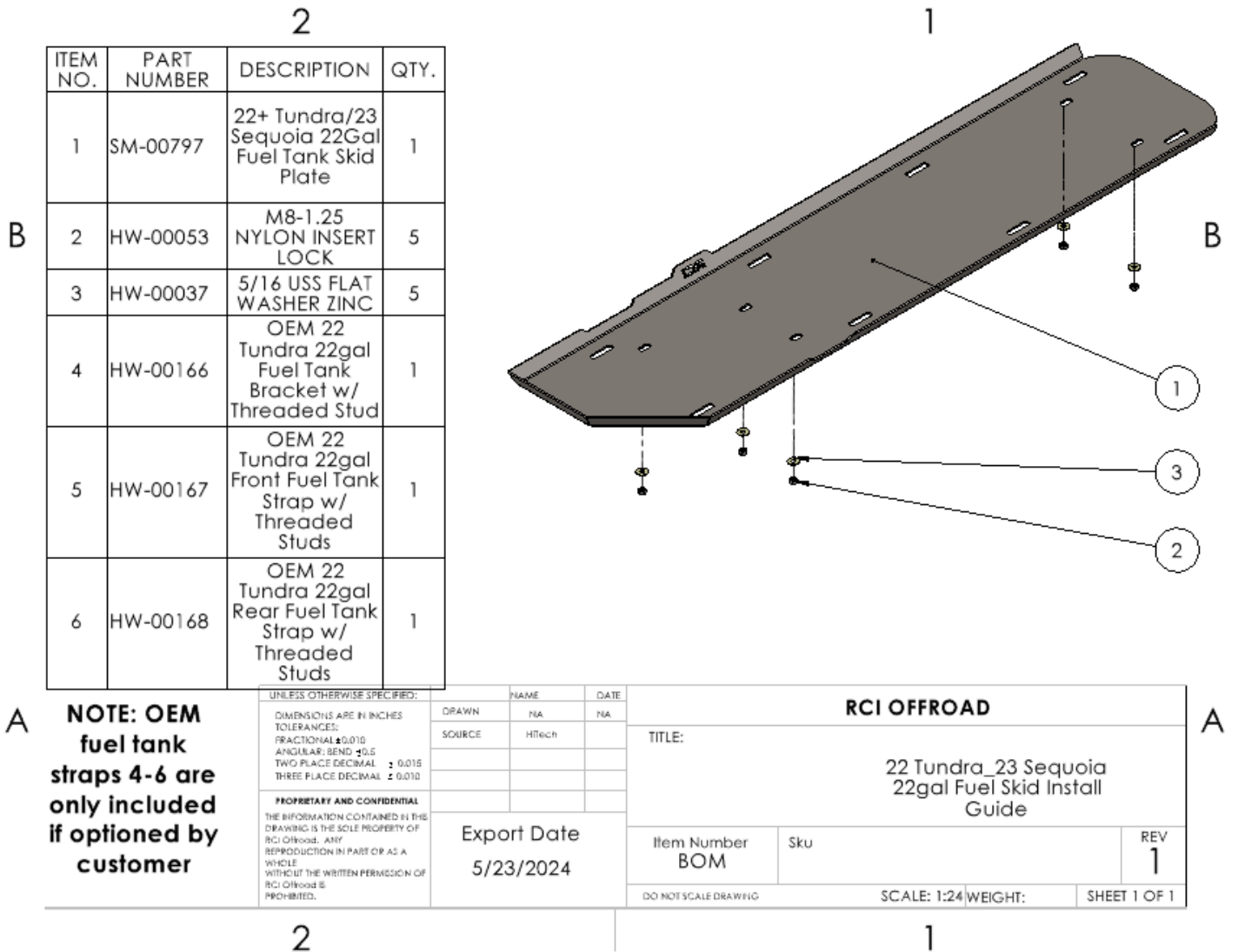


Figure 1:BOM

## INSTALLATION STEPS:

**\*\*Use hand tools, impact wrenches may cause damage if over torqued.**

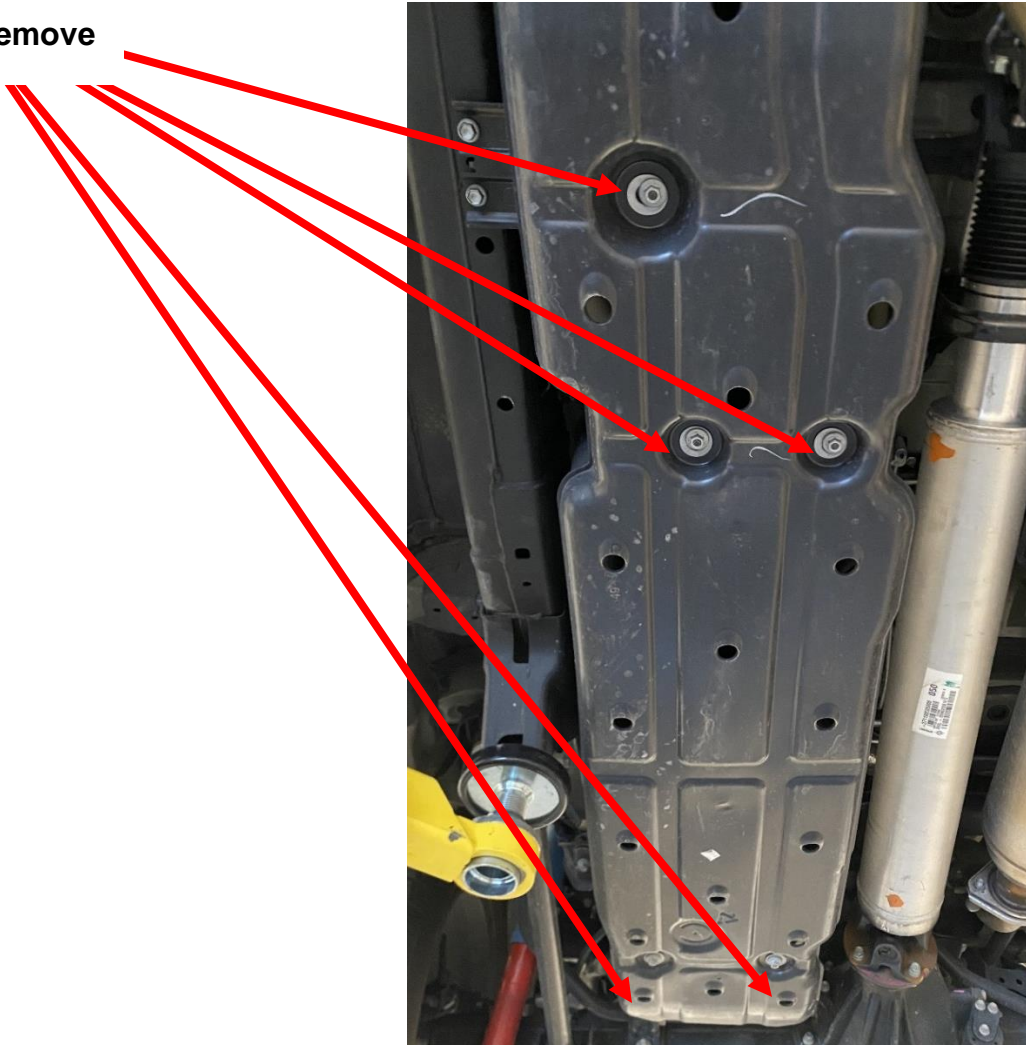
1. Begin by unpacking and removing all components and hardware. Please verify that all hardware, components, and mounting components are present. Please reference your original order invoice and verify all items are accounted for.

## INSTALLATION STEPS FOR THE TRD PRO MODEL OR VEHICLES WITH THE TRD OFFROAD PACKAGE:

**\*\* (Models with the factory plastic fuel tank skid plate).**

2. Take off the OEM fuel tank skid plate from the vehicle by removing the M8 nuts securing the skid.

**Remove**



*Figure 2: OEM Fuel tank skid.*

3. Collect the RCI fuel tank skid plate and with the help of a jack stand or friend, align the skid plate so that the threaded studs on the fuel tank are poking through the stand off tubes on the skid plate.
4. Use the provided M8 nuts with 5/16" washers to secure the skid plate.
5. Align the skid plate and fully tighten all 5 mounting locations. Reference the image below.

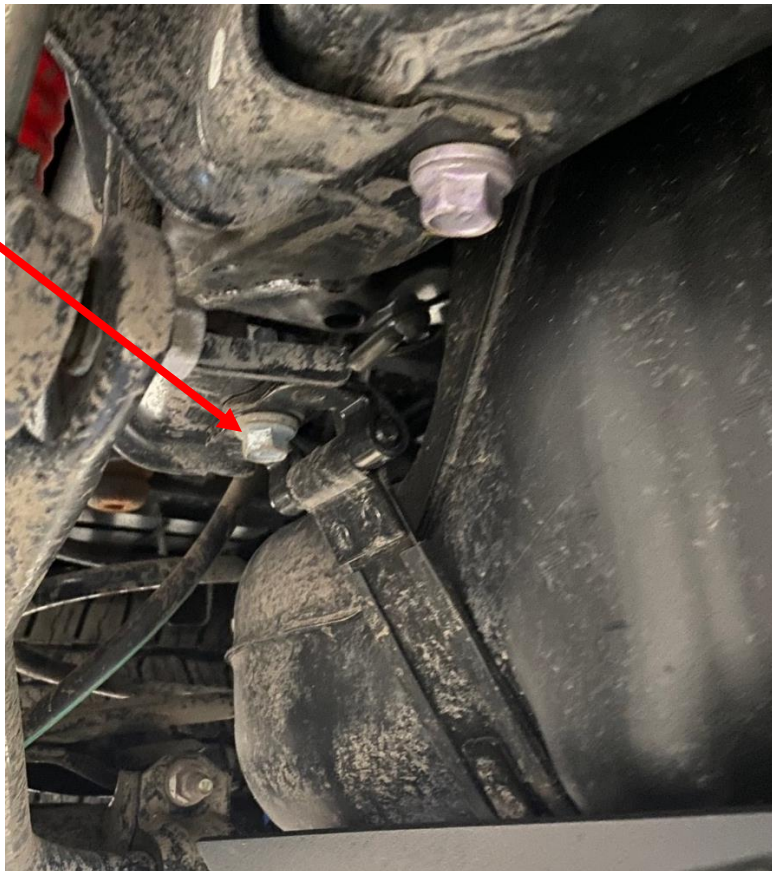


*Figure 3: Correctly installed fuel tank skid plate.*

## INSTALLATION STEPS FOR ALL OTHER MODELS WITHOUT THE STUDED FUEL TANK STRAPS:

**\*\* (Models without the factory plastic fuel tank skid plate).**

6. Secure the fuel tank to the vehicle with the use of several ratchet straps or hold in place with a floor jack.
7. Remove the two bolts securing the fuel tank straps to the vehicle. The two bolts are located on the passenger side of the fuel tank (One bolt per strap).



*Figure 4: Factory fuel tank strap mounting bolt to remove.*

8. Remove the pin and retaining pin on the driver side to release the fuel tank strap from the vehicle. Save the removed pins and retaining pins for installing the new straps.



*Figure 15: Driver Side Pin and Retaining Pin*

9. Replace the factory fuel tank straps with the provided (if optioned) fuel tank straps with skid plate mounting studs.
  - a. To install the replacement straps, reattach the driver side of the strap on the vehicle mounting point reusing the mounting pin and retaining pin. Swing towards the passenger side of the vehicle and reinstall the bolts to secure the straps. Torque the bolts to match Ford's recommendations.
  
10. Once the straps are replaced, replace the front most fuel tank bracket with the new OEM bracket with the threaded stud.





*Figure 5: Example of front bracket with threaded stud.*

11. After the two (2) new studded fuel tank straps are installed, go to Step 2 of the installation guide to finish installation of the RCI fuel tank skid plate.



**Enjoy your new RCI protection!**



**Share your new install with us on social media!**

**We love seeing our products out in the wild!**

[www.rcimetalworks.com](http://www.rcimetalworks.com)

[sales@rcioffroad.com](mailto:sales@rcioffroad.com)

970-797-3089

REV: 1 | 9/29/2022



Disclaimer: The products sold by RCI Metalworks are intended for off-road use only, should not be modified, and are for use only on the vehicle(s) specifically stated. RCI Metalworks makes no warranties express or implied, including of fitness for a particular purpose or merchantability. RCI Metalworks will not be liable for any damages arising out of the use or misuse of its products. It is the customers' responsibility to ensure the products are safely and properly attached to the vehicle, and all products should be installed by trained professionals. We strive to maintain extremely high-quality standards; however, all RCI Metalworks products are individually handcrafted, may vary slightly, and may contain minor imperfections. Due to the nature of raw aluminum, the material may have minor scratches and other blemishes caused by the manufacturing process, especially on the back side of product. RCI Metalworks is constantly seeking to improve its products and reserves the right to make changes to any product.