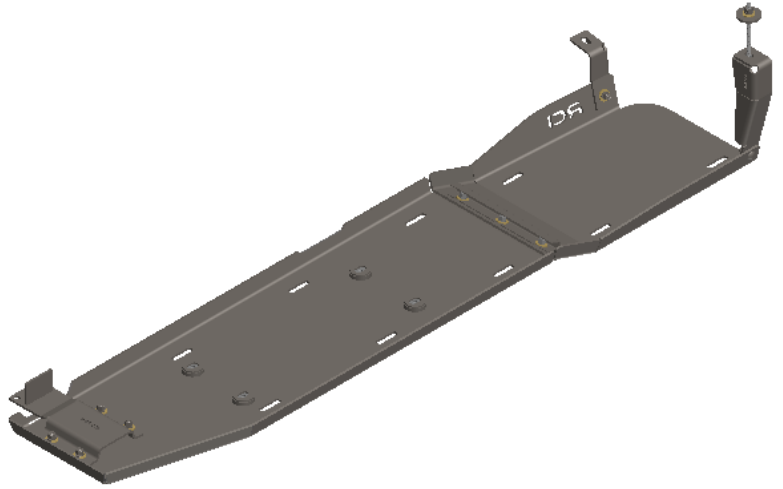


## RCI 24+ Tacoma 18gal Fuel Tank Skid Plate Installation Guide

ITEM NO.	PART NUMBER	DESCRIPTION	QTY.
1		24 Tacoma 18Gal Fuel Skid Front	1
2		24 Tacoma 18Gal Fuel Skid Rear	1
3	SM-00789	24 Tacoma Fuel Skid Bolt Cover	1
4	SM-00787	24 Tacoma 18Gal Fuel Front Mount	1
5	SM-00791	24 Tacoma 18Gal Fuel Rear Driver Mount	1
6	SM-00790	24 Tacoma 18Gal Fuel Rear PSG Mount	1
7	HW-00052	3/8-16 X 1 CARRIAGE BOLT GR-5	9
8	HW-00026	3/8 USS FLAT WASHER THRU HARD	10
9	HW-00071	3/8-16 NYLON INSERT STD	3
10	HW-00029	3/8 SPLIT LOCK WASHER ZINC	7
11	HW-00030	3/8-16 FIN HEX NUT GR-5 ZINC	7
12	HW-00053	M8-1.25 NYLON INSERT LOCK	4
13	HW-00048	5/16 USS FLAT WASHER THRU HARD	4
14	HW-00156	0.375 x 5 Carriage Bolt	1
15	HW-00028	Full Moon Spacer	1
16	HW-00163	OEM 2024 Tacoma 18Gal Fuel Tank Straps w/ studs Middle Front	1
17	HW-00164	OEM 2024 Tacoma 18Gal Fuel Tank Straps w/ studs Middle Rear	1



**NOTE: OEM fuel tank straps 16&17 are only included if optioned by customer.**

RCI OFFROAD			
TITLE:		24 Tacoma 18gal Fuel Tank Skid Plate Install Guide	
Item Number	Sku	REV	
BOM		1	
DO NOT SCALE DRAWING		SCALE: 1:24	WEIGHT: SHEET 1 OF 1

Figure 1:BOM

## INSTALLATION STEPS:

**\*\*Use hand tools, impact wrenches may cause damage if over torqued.**

1. Begin by unpacking and removing all components and hardware. Please verify that all hardware, components, and mounting components are present. Please reference your original order invoice and verify all items are accounted for.

## INSTALLATION STEPS FOR THE TRD PRO MODEL OR VEHICLES WITH THE TRD OFFROAD PACKAGE:

**\*\* (Models with the factory plastic fuel tank skid plate).**

2. Take off the OEM fuel tank skid plate from the vehicle by removing the M8 nuts securing the skid.



*Figure 2: Fuel tank with skid removed.*

3. Remove the front most OEM mounting bracket and save the two mounting bolts for later use.

**Remove  
and save  
bolts**



*Figure 3: Remove front mounting bracket.*

4. Remove the rear most fuel tank strap you will be removing the bolt on the passenger side of the vehicle. Save this mounting bolt for later use.
  - a. Remove the retaining pin on the driver side of the vehicle and set aside the strap.

**Remove  
pin**



**Remove  
and save  
bolt**

*Figure 4: Remove rear fuel tank strap.*

5. Assemble the RCI fuel tank skid on the ground before installing on the vehicle.
6. Collect the Front Mount along with four (4) of each: 3/8" x 1" carriage bolts, 3/8" washers, 3/8" split washers, and 3/8" hex nuts. Install the front mount on the inside of the front of the skid plate as depicted below.

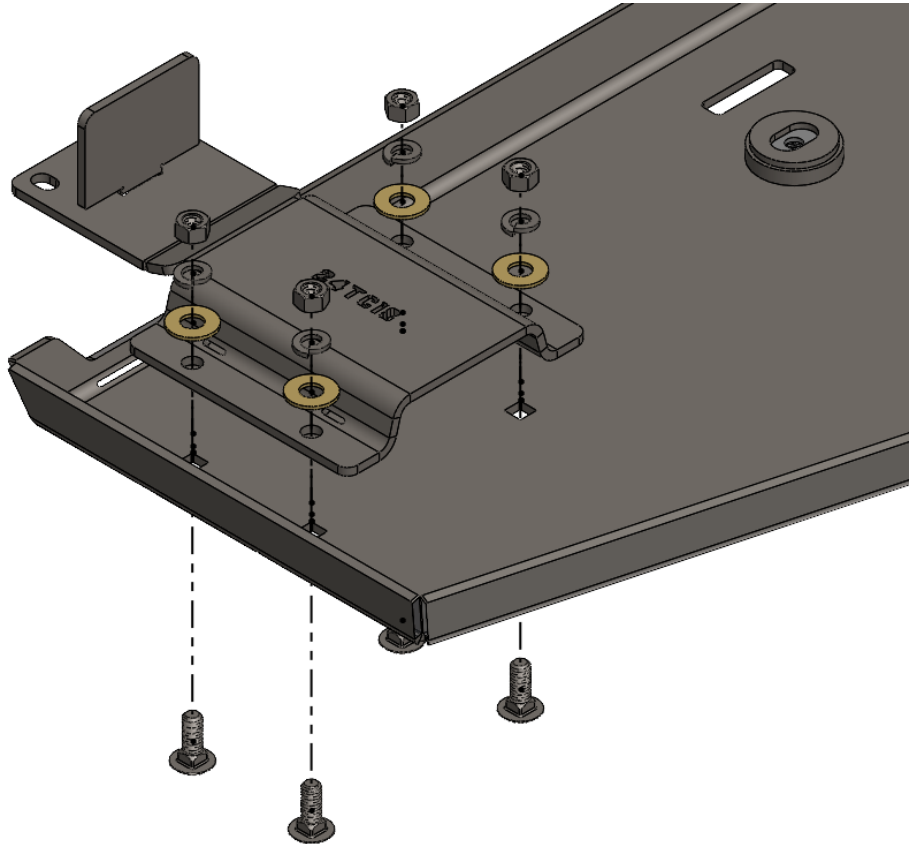


Figure 5: Front mount bracket installation.



7. Install the rear section of the fuel skid to the front section using the Bolt Cover, and three (3) 3/8" x 1" carriage bolts, 3/8" washers, and 3/8" lock nuts. Install the hardware as depicted below.
  - a. Slide the Bolt Cover under the washers and skid plate before fully tightening the nuts.

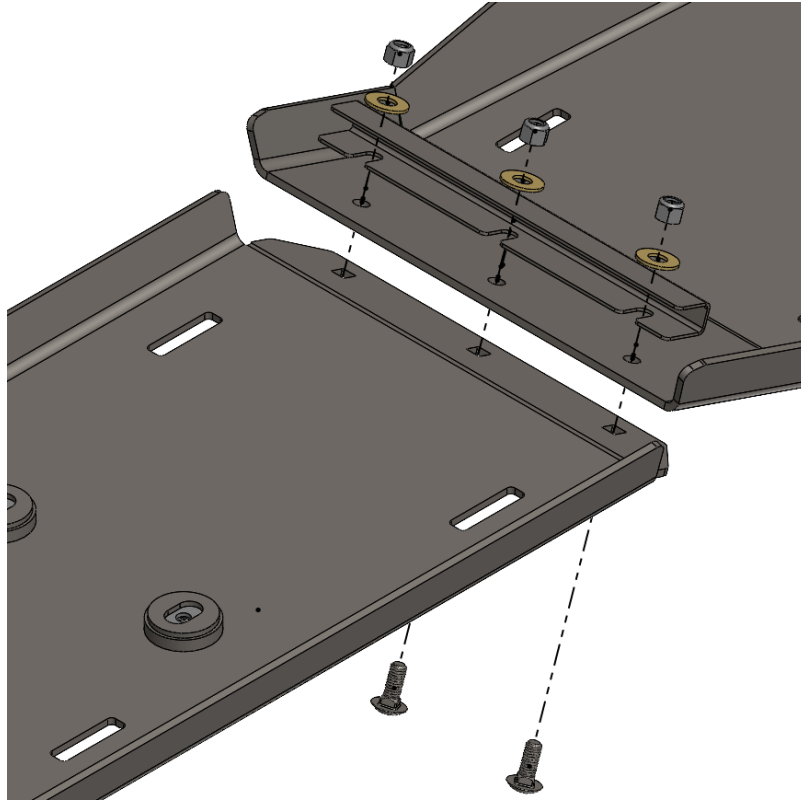


Figure 6:Hardware orientation.

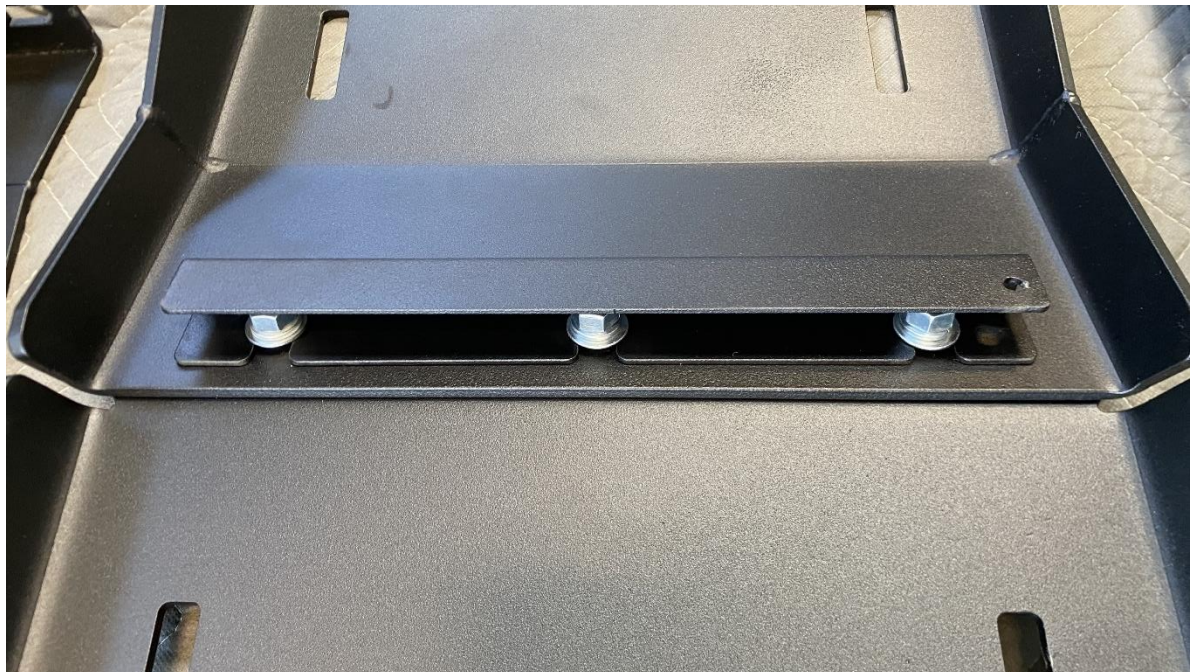


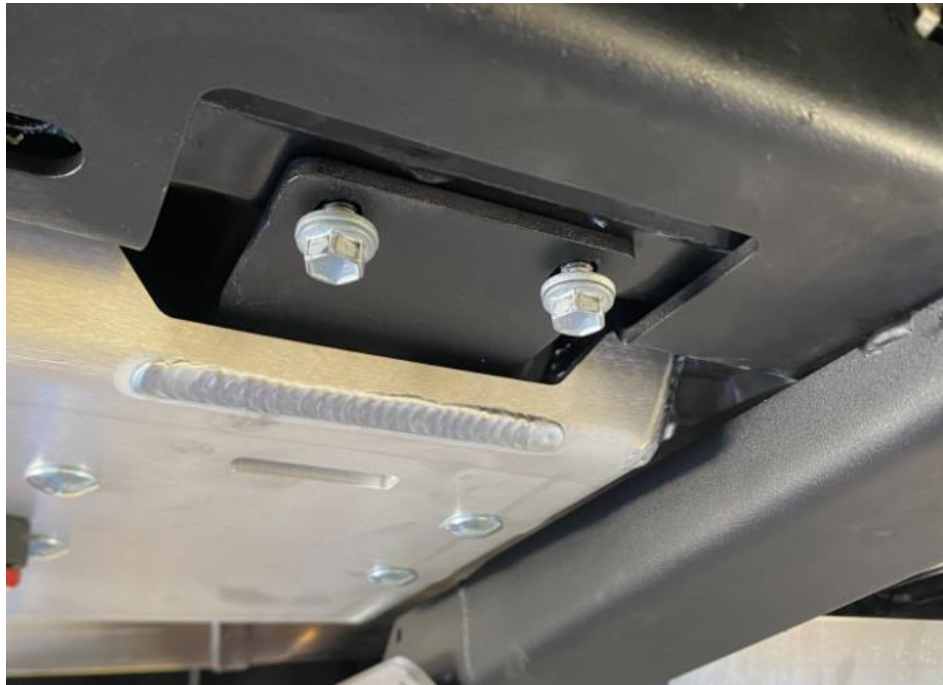
Figure 7:Correct installation of bolt protector.

8. Fully tighten all 3/8" hardware.
9. With the help of a friend or floor jack, hold the skid plate in place by lining up the threaded studs with the standoff tubes on the skid plate.
10. Loosely install the four (4) provided 5/16" flat washers and M8 lock nuts on the threaded studs to hold the skid in place.



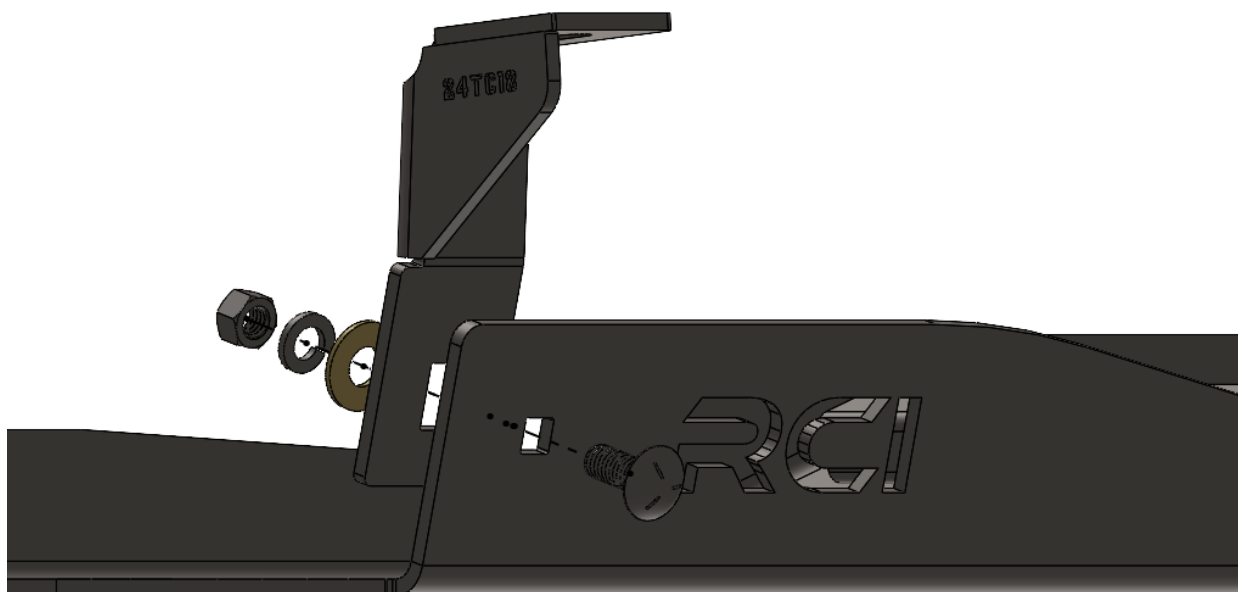
*Figure 8: Skid plate loosely installed with M8 nuts.*

11. Collect the two mounting bolts that were saved from removing the OEM front bracket. Reinstall the bolts to secure the front of the skid plate as depicted below.



*Figure 9: Front mount correct installation.*

12. Collect the rear passenger mounting bracket and the fuel tank strap bolt that was removed earlier. Collect one (1) of each: 3/8" x 1" carriage bolt, 3/8" washer, 3/8" split washer, and 3/8" hex nut. Install the rear passenger mounting bracket as depicted below.



*Figure 10: Correct hardware orientation.*

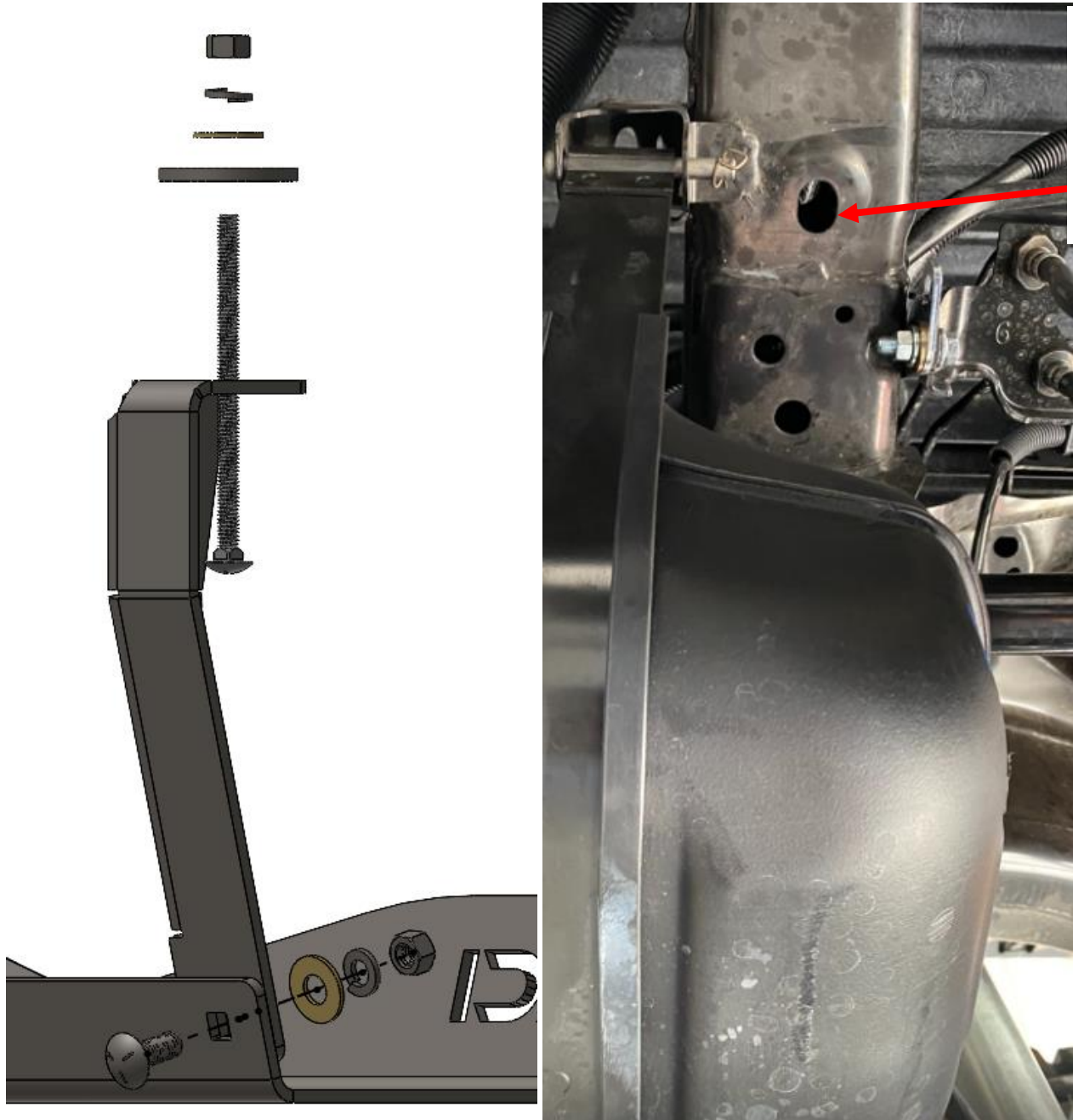
13. Mount the bracket to the truck using the OEM fuel tank strap bolt.
  - a. Leave all hardware loose.



*Figure 11: Correct installation of rear passenger bracket.*



14. Collect the rear driver mounting bracket along with one (1) 3/8" x 1" carriage bolt, one (1) 3/8" x 5" carriage bolt, one (1) Full moon washer, two (2) 3/8" washer, two (2) 3/8" split washer, and two (2) 3/8" hex nut. Install the rear Driver mounting bracket as depicted below.



Install 5" carriage bolt through the hole in the frame.

Figure 12: Hardware orientation.



*Figure 13: Correctly installed rear driver bracket.*

15. Finish the installation by going back and fully tightening all hardware.

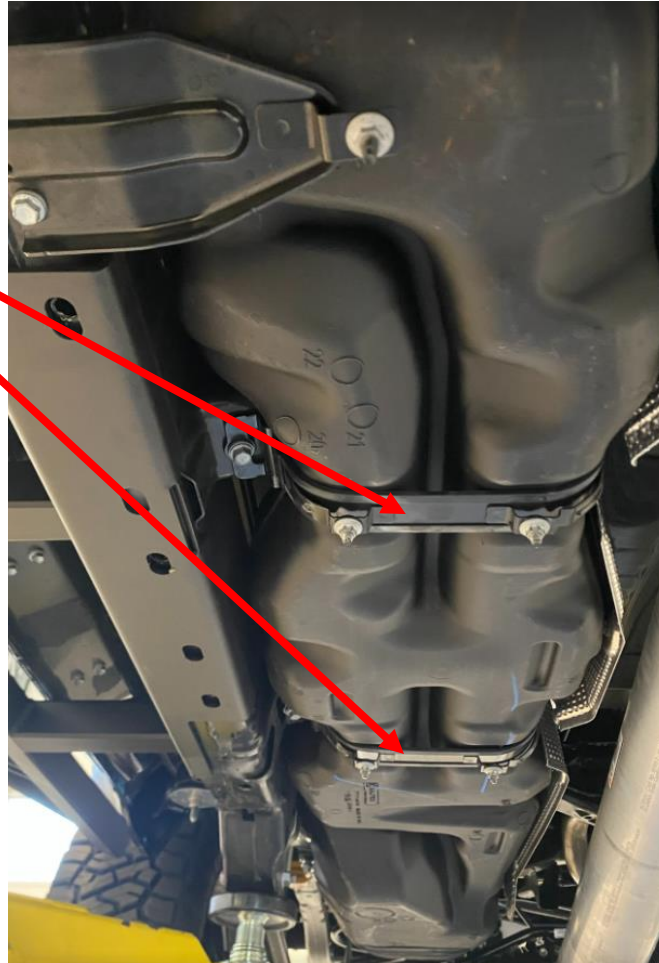
## INSTALLATION STEPS FOR ALL OTHER MODELS WITHOUT THE STUDED FUEL TANK STRAPS:

**\*\* (Models without the factory plastic fuel tank skid plate).**

16. Remove the two center fuel tank straps on the vehicle. Remove and replace one strap at a time to avoid the fuel tank sagging too much.

Note: only replace the straps if your vehicle does not have threaded mounting studs.

**Straps to replace.**



*Figure 9 Example of Strap Mounting Bolt Location*



17. Starting with the front most strap, remove the bolt securing the strap and swing the strap towards the driver side of the truck.

**Remove mounting bolt.**



*Figure 14: Mounting bolt to remove.*

18. Remove the pin and retaining pin on the driver side to release the fuel tank strap from the vehicle. Save the removed pins and retaining pins for installing the new straps.



*Figure 15: Driver Side Pin and Retaining Pin*





19. Replace the factory fuel tank straps with the provided (if optioned) fuel tank straps with skid plate mounting studs.
  - a. To install the replacement straps, reattach the driver side of the strap on the vehicle mounting point reusing the mounting pin and retaining pin. Swing towards the passenger side of the vehicle and reinstall the bolts to secure the straps. Torque the bolts to match Ford's recommendations.
20. Repeat these steps for the middle rear fuel tank strap.
21. After the two (2) new studded fuel tank straps are installed, go to Step 2 of the installation guide to finish installation of the RCI fuel tank skid plate.

# RCI OFFROAD

## Enjoy your new RCI protection!



### Share your new install with us on social media!

### We love seeing our products out in the wild!

[www.rcimetalworks.com](http://www.rcimetalworks.com)

[sales@rcioffroad.com](mailto:sales@rcioffroad.com)

970-797-3089

REV: 1 | 9/29/2022



Disclaimer: The products sold by RCI Metalworks are intended for off-road use only, should not be modified, and are for use only on the vehicle(s) specifically stated. RCI Metalworks makes no warranties express or implied, including of fitness for a particular purpose or merchantability. RCI Metalworks will not be liable for any damages arising out of the use or misuse of its products. It is the customers' responsibility to ensure the products are safely and properly attached to the vehicle, and all products should be installed by trained professionals. We strive to maintain extremely high-quality standards; however, all RCI Metalworks products are individually handcrafted, may vary slightly, and may contain minor imperfections. Due to the nature of raw aluminum, the material may have minor scratches and other blemishes caused by the manufacturing process, especially on the back side of product. RCI Metalworks is constantly seeking to improve its products and reserves the right to make changes to any product.