

## 2024 Tacoma Double Cab Roof Rack Installation Guide

ITEM NO.	PART NUMBER	DESCRIPTION	QTY.
1	HW-00041	Roof Rack Extrusion Cross Bar	5
2	SM-00373	Tacoma RCI Front Fairing .125AL R.7	1
3	SM-00779	24 Taco Roof Side Panel Driver .25AL R.1	1
4	SM-00782	24 Taco Roof Side Panel Passenger .25AL R.1	1
5	SM-00781	Roof Rack Mount Taco .188AL UNI R.1	4
6	SM-00780	24 Tacoma Rear Fairing .190AL	1
7	HK-00060	KIT: TACOMA DOUBLE CAB ROOF	1
8	BX-00036	TACOMA ROOF RACK TOP	1

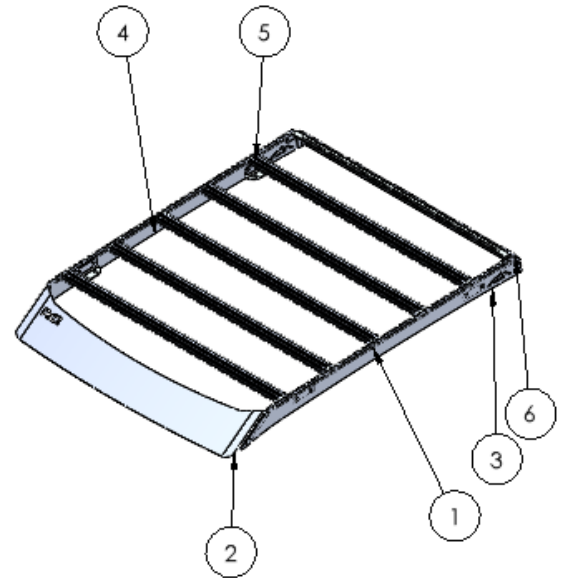


Figure 1: BOM.

ITEM NO.	PART NUMBER	DESCRIPTION	QTY.
1	HW-00120	1 X .907 X 4.5 RUBBER BASE W/3	4
2	HW-00121	1 X 4-1/2 RUBBER BUMPER W/2	4
3	HW-00122	M6-1.0 X 45MM HEX FLANGE BOLT	10
4	HW-00123	#14 X 1 OD 20GA BONDED WASHER	10
5	HW-00017	1/4-20 X 7/8 BUTTON SOC CAP BLACK	28
6	HW-00019	1/4 SAE FLAT WASHER BLK ZINC	36
7	HW-00031	1/4-20 KEPS NUT 18-8 S.S. BLACK	8
8	HW-00038	5/16-18 X 1 CARRIAGE BOLT BLACK GR-5	12
9	HW-00119	5/16 USS FLAT WASHER BLK ZINC	12
10	HW-00062	5/16-18 NYLON INSERT LOCK NUT	12
11	HW-00103	Front Fairing Weather Stripping (80 DUROMETER PVC/EPDM SPONGE)	1



Figure 2: Hardware BOM

## INSTALLATION STEPS:

**\*\*Use hand tools, impact wrenches may cause damage if over-torqued\*\***

- 1) Begin by unpacking and removing all components and hardware. Please verify that all hardware and mounting components are present. Reference your original order invoice as well as the BOMs in Figures 1 and 2 to verify all items are accounted for.
- 2) Remove the factory roof rack if equipped. Remove the gutter weather strip by pulling it up. Locate the mounting holes under the tape and cut the tape to reveal the hole. There are two holes in the front and two in the rear.



*Figure 3: Roof Mounting Holes With tape cut*

- 3) On the ground, lay out the driver (Item #3) / passenger (Item #4) side panels with the mountains facing the correct direction. (figure 3)

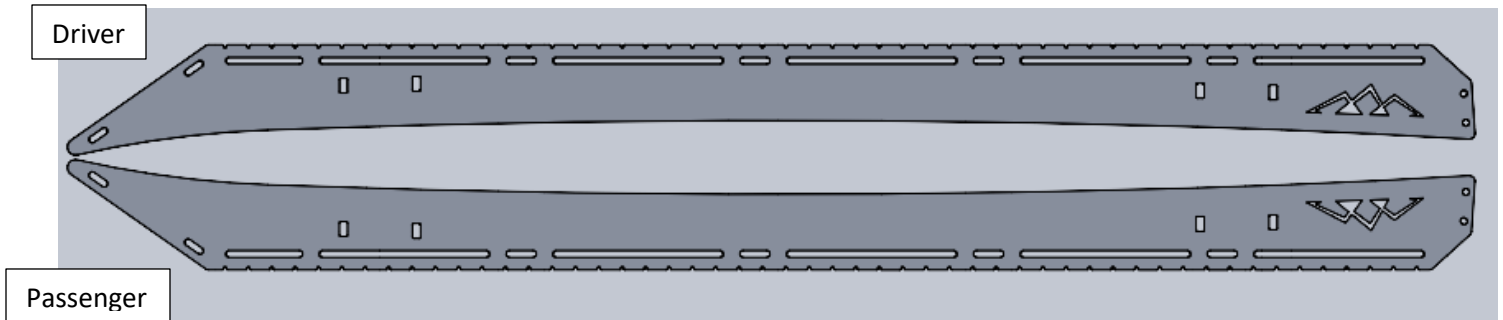


Figure 4: Driver/Passenger Side Panels

- 4) Install the mounting brackets (Item #5) onto the side panels both front and rear using the 5/16" carriage bolt (Hardware Item #8), 5/16" flat washer (Hardware Item #9), and the 5/16" lock nut (Hardware Item #10). (A lock washer could be used in place of the lock nut). Install them in the lowest position possible and adjust them later.

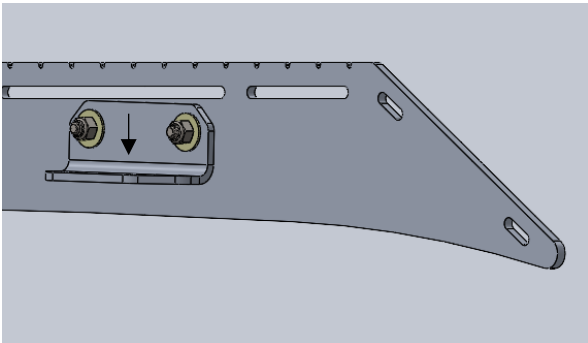


Figure 5: Correctly installed hardware (front).

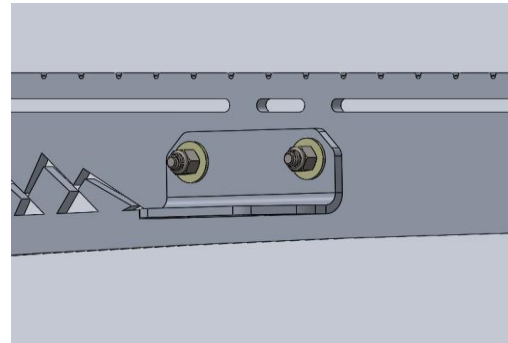


Figure 6: Correctly installed hardware (Rear).

- 5) On the ground, lay out the forty-seven" T-Slot cross bars (Item #1), the driver (Item #3), and passenger (Item #4) side panels with the bottom flanges facing in. Orient the opening of the T-Slot facing upwards on your desired side of your Tacoma.

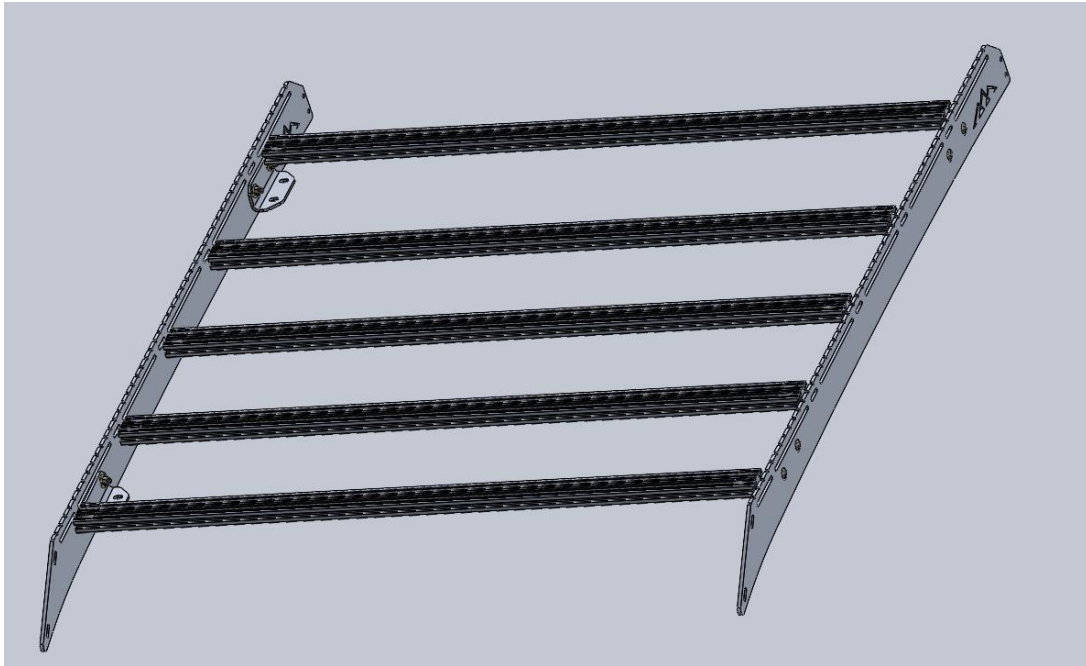


Figure 7: T-Slot Cross Bar Lay Out.

- 6) Install the front and rear T-Slot crossbars (Item #1) using 1/4-20 X 7/8" black button heads (Hardware Item #5) with 1/4" black washers (Hardware Item #6). There is a T-nut opening machined on the cross bars to make it easier to install components. It is recommended that this opening face up. Wait to tighten the screws until all cross bars are installed.

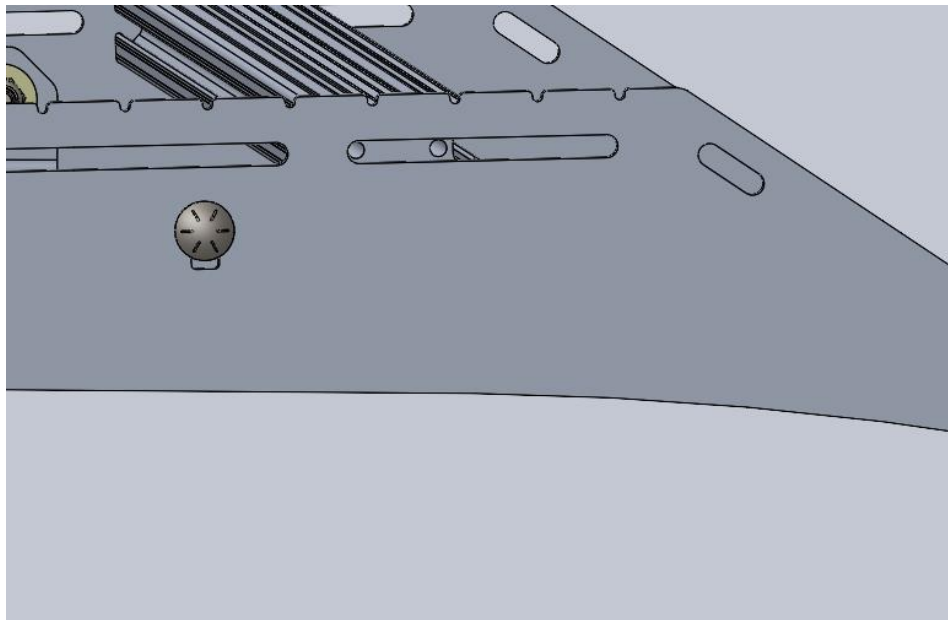
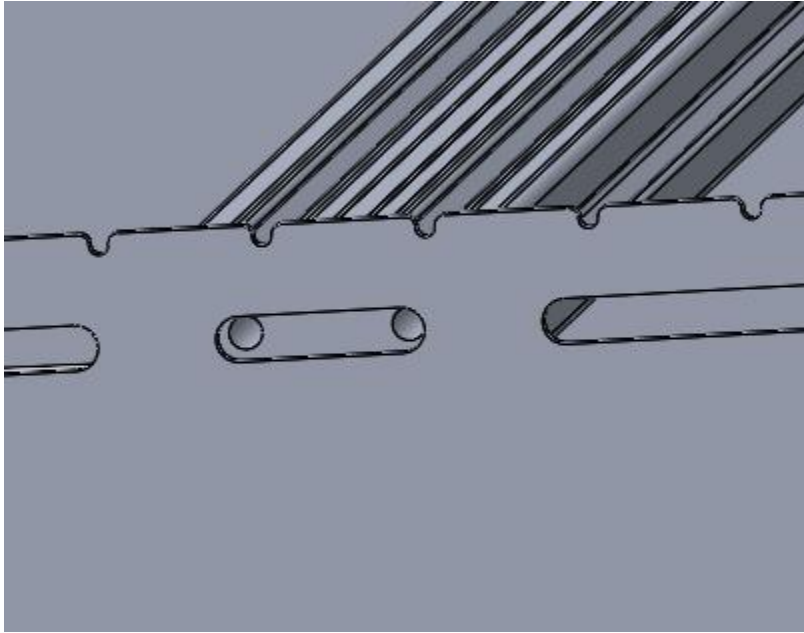
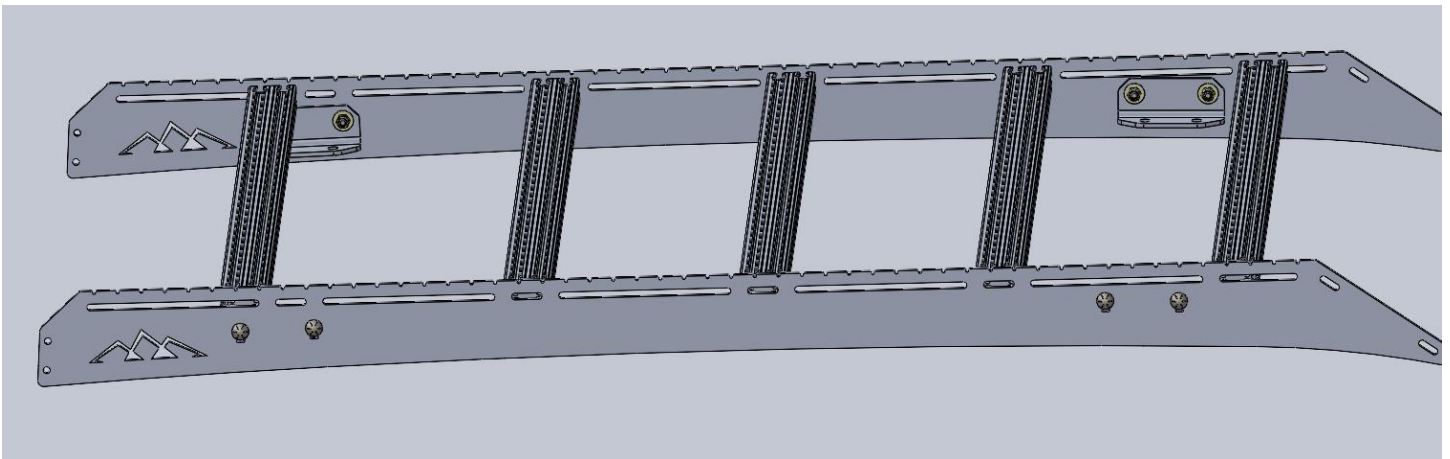


Figure 8: T-Slot Placement

- 7) Install the remaining T-Slot cross bars (Item #1) using 1/4-20 X 7/8" black button heads (Hardware Item #5) with 1/4" black washers (Hardware Item #6). It is recommended to install the remaining cross bars in the 1" slots to ensure equal spacing. Tighten all cross bars now.



*Figure 9: 1 Inch Slots*



*Figure 10: Final T-Slot Install*

- 8) Install the rear fairing (Item #6) using 1/4-20 X 7/8" black button heads (Hardware Item#5) with 1/4" black washers (Hardware Item #6) and black nuts with lock washers (Hardware Item #7).



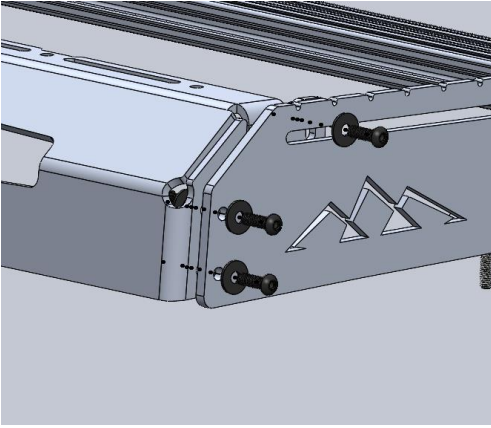


Figure 11: Rear Faring Install (Outside).

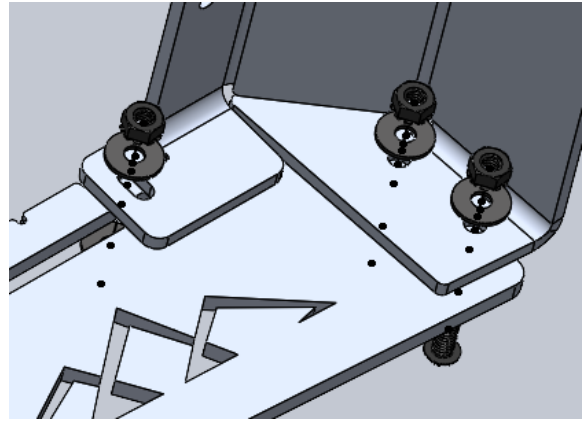


Figure 12: Rear Faring Install (Inside).

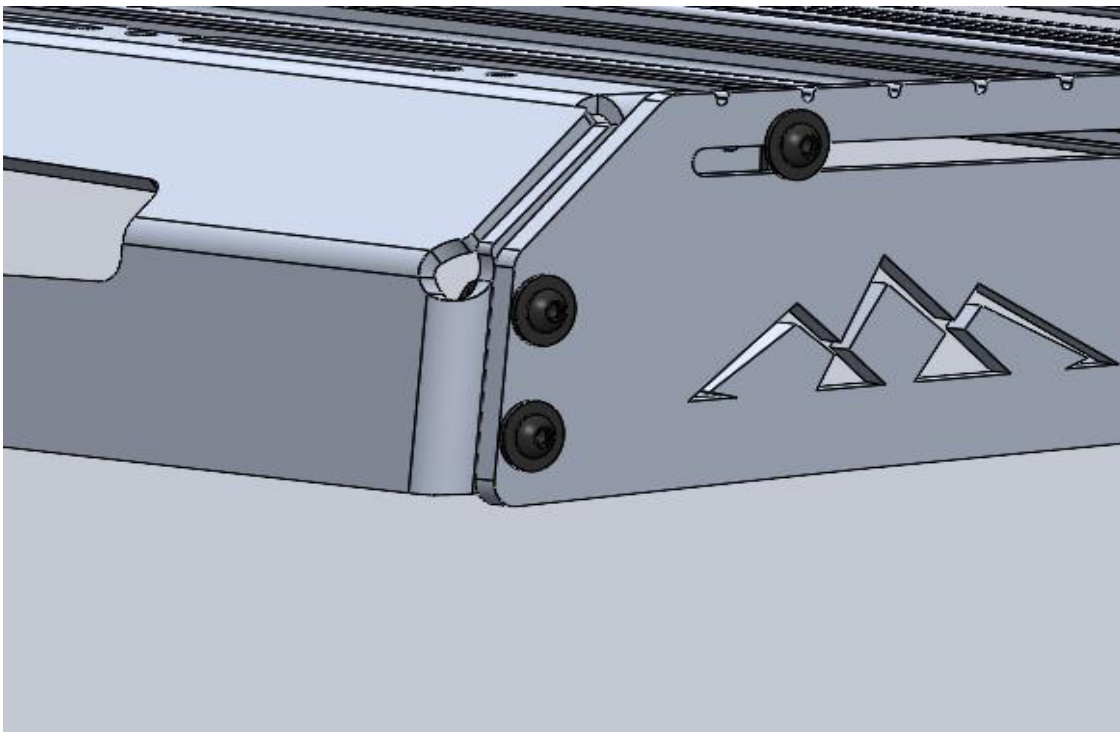
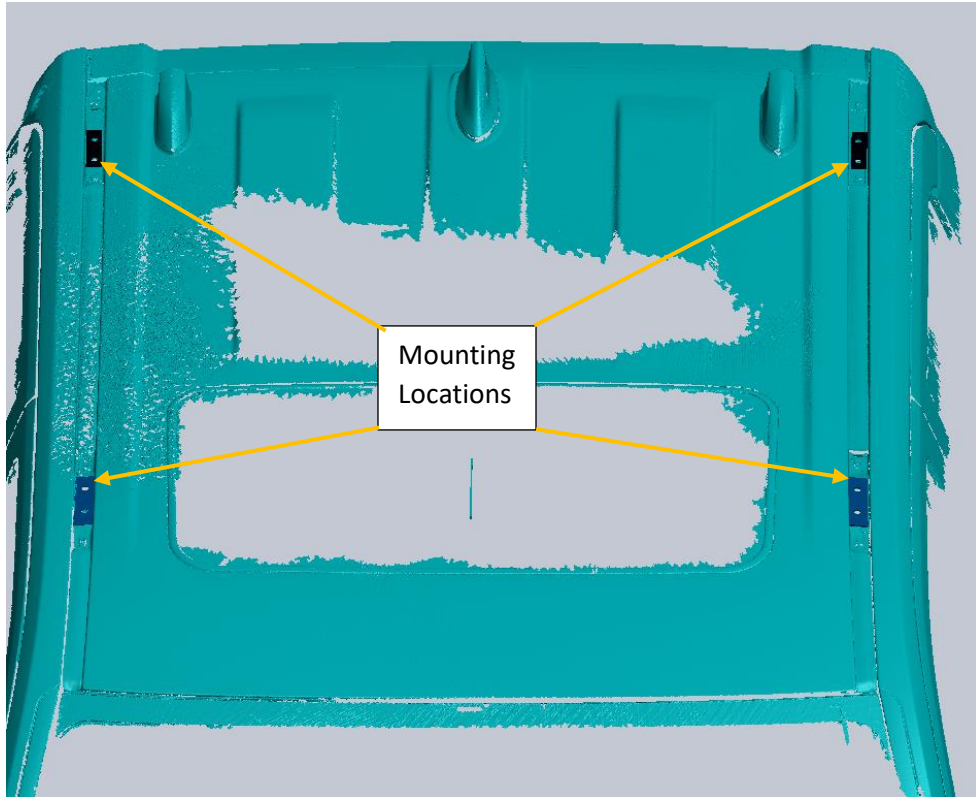


Figure 13: Rear Faring Final Install.

- 9) Place the drilled rubber blocks (Hardware Item #2) on top of your truck in the four factory mounting locations matching the bracket locations.



*Figure 14: 24 Tacoma Roof Rack Mounting Locations*



*Figure 13: Rubber Block Placement*

10) Lift the assembled rack on top of your Truck and install using 1/4" Rubber washers (Hardware Item #4) and M6x45mm bolts (Hardware Item #3). Make sure that the M6x45mm bolts go through the drilled rubber block to ensure a watertight seal. **\*\*No silicone is needed to make it watertight\*\***



*Figure 16: Correct Roof Rack/Rubber Block Install.*

- 11) You may now set the height between the roof rack and the roof of your truck so that it does not interfere with anything while in operation.
- 12) Install the front fairing weather strip (item#18) on the bottom edge of the front fairing. Note\* A decent amount of pressure is required to seat the weather strip properly.
- 13) Install the front fairings using 1/4-20 X 7/8" black button heads (Hardware Item #5) with 1/4" black washers (Hardware Item #6) and black nuts with lock washers (Hardware Item #3). When installing the front fairing, it is designed to bow towards the front of the truck. It is **IMPORTANT** to push the front fairing as far down as possible. The Fairing should be touching the roof of your truck.





*Figure 17: Push Down Fairing*



*Figure 18: Completed Installation*

Enjoy your new RCI protection!



**Share your new install with us on social media!**

**We love seeing our products out in the wild!**

[www.rcimetalworks.com](http://www.rcimetalworks.com)

[sales@rcioffroad.com](mailto:sales@rcioffroad.com)

970-797-3089



---

Disclaimer: The products sold by RCI Metalworks are intended for off-road use only, should not be modified, and are for use only on the vehicle(s) specifically stated. RCI Metalworks makes no warranties express or implied, including of fitness for a particular purpose or merchantability. RCI Metalworks will not be liable for any damages arising out of the use or misuse of its products. It is the customers' responsibility to ensure the products are safely and properly attached to the vehicle, and all products should be installed by trained professionals. We strive to maintain extremely high quality standards; however, all RCI Metalworks products are individually handcrafted, may vary slightly, and may contain minor imperfections. Due to the nature of raw aluminum, the material may have minor scratches and other blemishes caused by the manufacturing process, especially on the back side of product. RCI Metalworks is constantly seeking to improve its products and reserves the right to update any product.