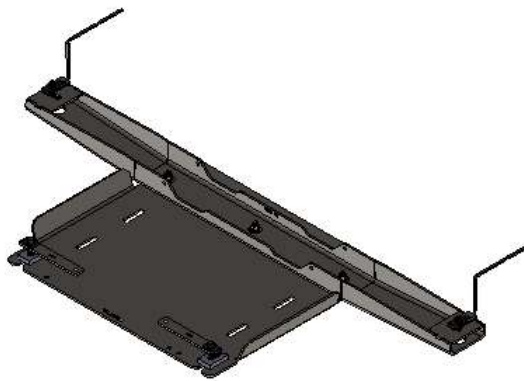


## 24+ Tacoma Transfer Case Skid Plate Install Guide

ITEM NO.	PART NUMBER	DESCRIPTION	QTY.
1	SM-00770	2024 Tacoma T-Case Skid Plate - Steel	1
2	SM-00772 Built	2024 Tacoma T-Case Crossmember	1
3	HW-00160	24+ Taco Bent Crossmember Nut	2
4	HW-00021	M10-1.5 X 35MM HEX FLANGE BOLT	2
5	HW-00026	3/8 USS FLAT WASHER THRU HARD	7
6	HW-00023	5558B1M; M10-1.5 U-NUT .90MM-	4
7	BX-00012	Toyota Trans 26x23x3	1
8	BX-00021	ECONO R.E. 46x6x6	1
9	HW-00162	M10 X 45 Flanged Bolt Partially Threaded	2
10	HW-00029	3/8 SPLIT LOCK WASHER ZINC	3
11	HW-00030	3/8-16 FIN HEX NUT GR-5 ZINC	3
12	HW-00035	3/8-16 X 1-1/2 CARRIAGE BOLT	3
13	HW-00003	Mounting Plate #3 .188MS	2
14	HW-00125	3/8 TRANSMISSION SPACER	2

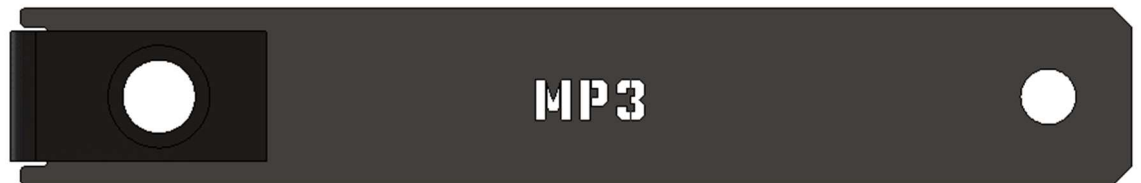
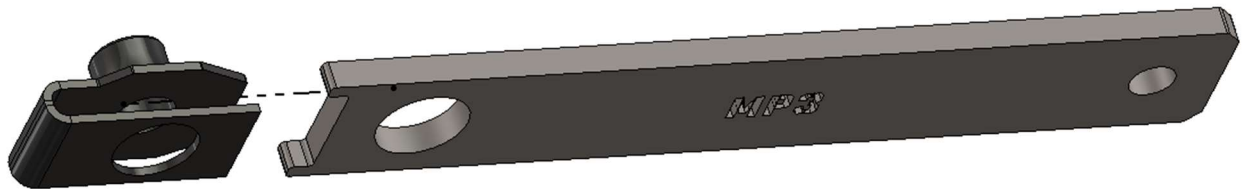
UNLESS OTHERWISE SPECIFIED:	PROPRIETARY AND CONFIDENTIAL	NAME	DATE
DIMENSIONS ARE IN INCHES TOLERANCES: FRACTIONAL ±0.010 ANGULAR BEND ±0.5 TWO PLACE DECIMAL ±0.015 THREE PLACE DECIMAL ±0.010	THE INFORMATION CONTAINED IN THIS DRAWING IS THE SOLE PROPERTY OF RCI OFFROAD. ANY REPRODUCTION IN PART OR AS A WHOLE WITHOUT THE WRITTEN PERMISSION OF RCI OFFROAD IS PROHIBITED.	DRAWN KL	04/10/2024
		Export Date 4/22/2024	
<b>RCI OFFROAD</b>			
TITLE:		24 Taco Non-Hybrid T-CASE - SHIP BOM	
Item Number FG-00460		REV 1	
DO NOT SCALE DRAWING		SCALE: 1:10 WEIGHT:	SHEET 1 OF 1

Figure 1: BOM

## INSTALLATION STEPS:

**\*\*Use hand tools, impact wrenches may cause damage if over torqued.\*\***

- 1) Begin by unpacking and removing all components and hardware. Please verify that all hardware and mounting components are present. Reference your original order invoice and verify all items are accounted for.
- 2) Pre-requisite steps for installation without an RCI 24+ Tacoma Transmission Skid Plate. If installing with a RCI 24+ Tacoma Transmission Skid Plate, skip this step.
  - a. Install the M10 speed clips on the MP3 plates.



- b. Insert the MP3 subassemblies into the rear vehicle crossmember. Align the threaded holes of the MP3 subassemblies with the large holes in the vehicle crossmember.
  - i. Insert the MP3 plates from into the crossmember from the cutouts in the center of the crossmember.



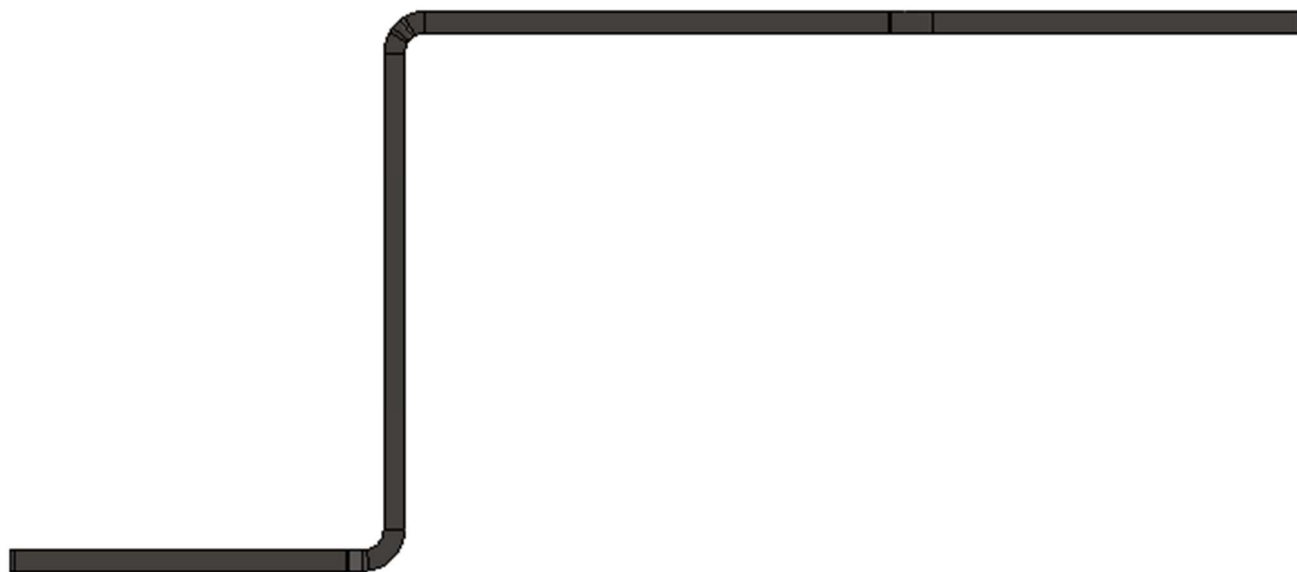
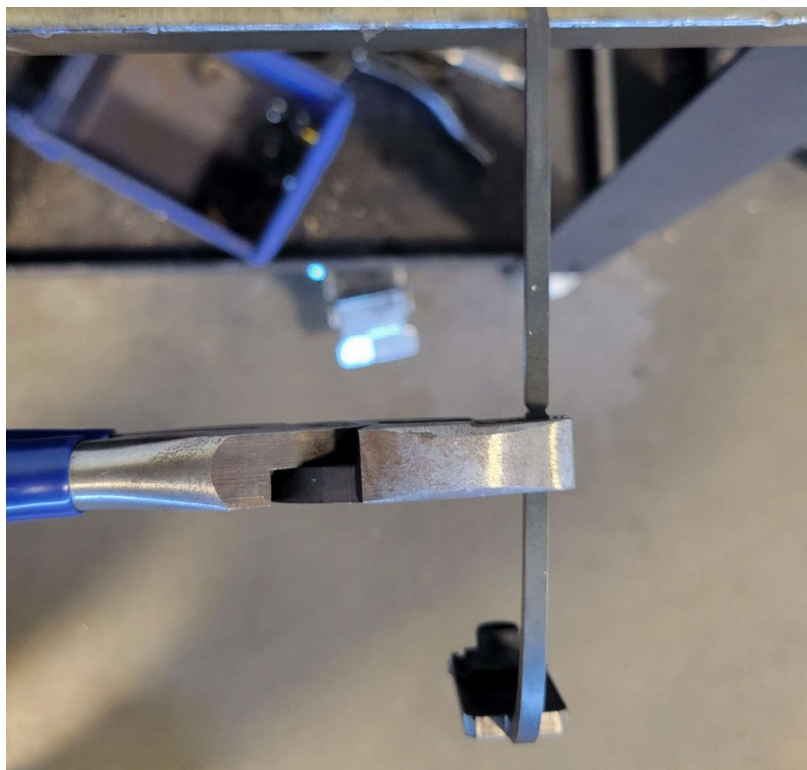
- ii. Align the threaded ends of the MP3s with the large holes in the rear crossmember.



- 3) Prepare front for installation.
  - a. If installing the RCI 24+ Tacoma Transfer Case Skid Plate in conjunction with the RCI 24+ Tacoma Transmission Skid Plate, loosen the transmission skid plate mounting hardware so there is at least 1/4" gap between the rear of the transmission skid plate and the vehicle crossmember.
  - b. If installing the RCI 24+ Tacoma Transfer Case Skid Plate without the RCI 24+ Tacoma Transmission Skid Plate, loosely install a set of M10 bolts in the MP3 plates in the crossmember.
- 4) Install the transfer case crossmember on the vehicle frame.
  - a. Remove the plastic caps from the sides of the vehicle frame.
  - b. Use a set of pliers to bend the included crossmember nut plates.
    - i. At the junction between the large part of the nut plate and the "tail", bend the tail upward.

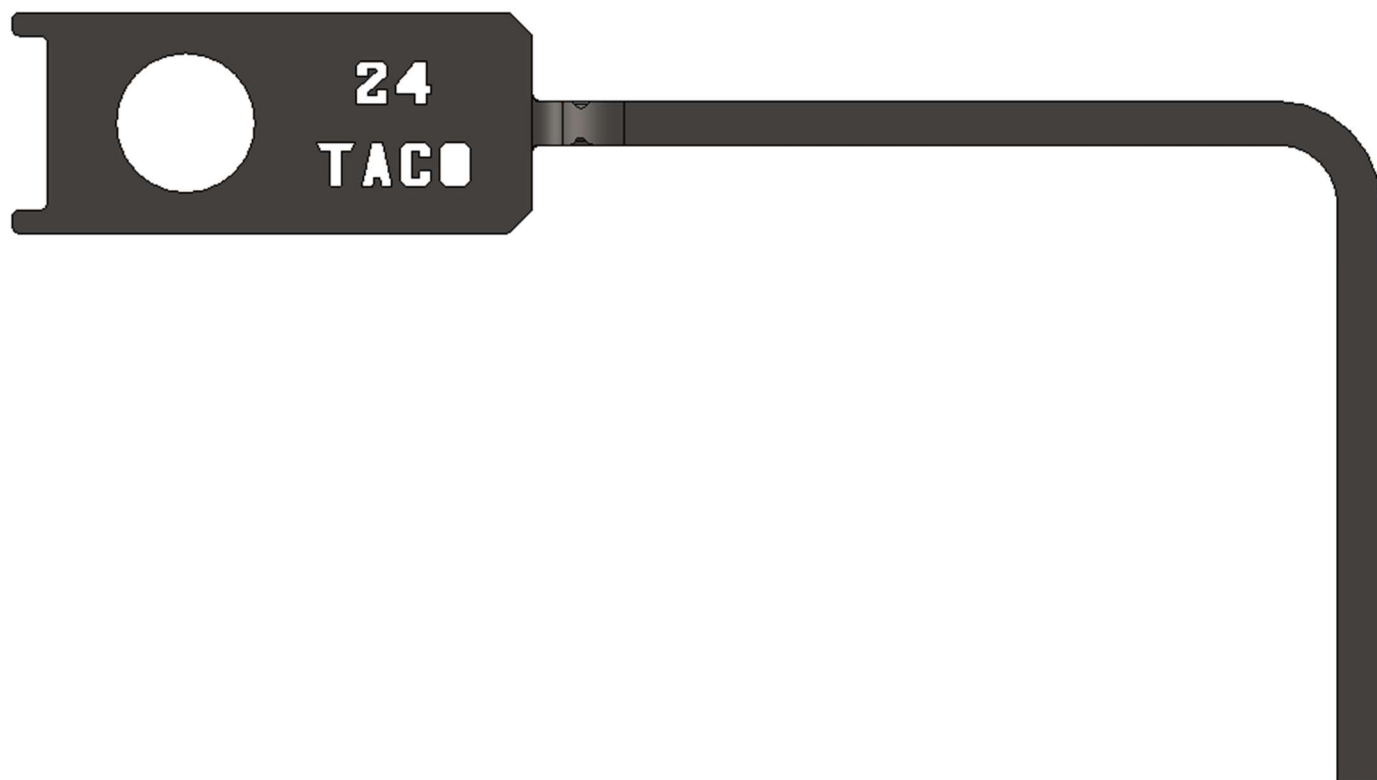
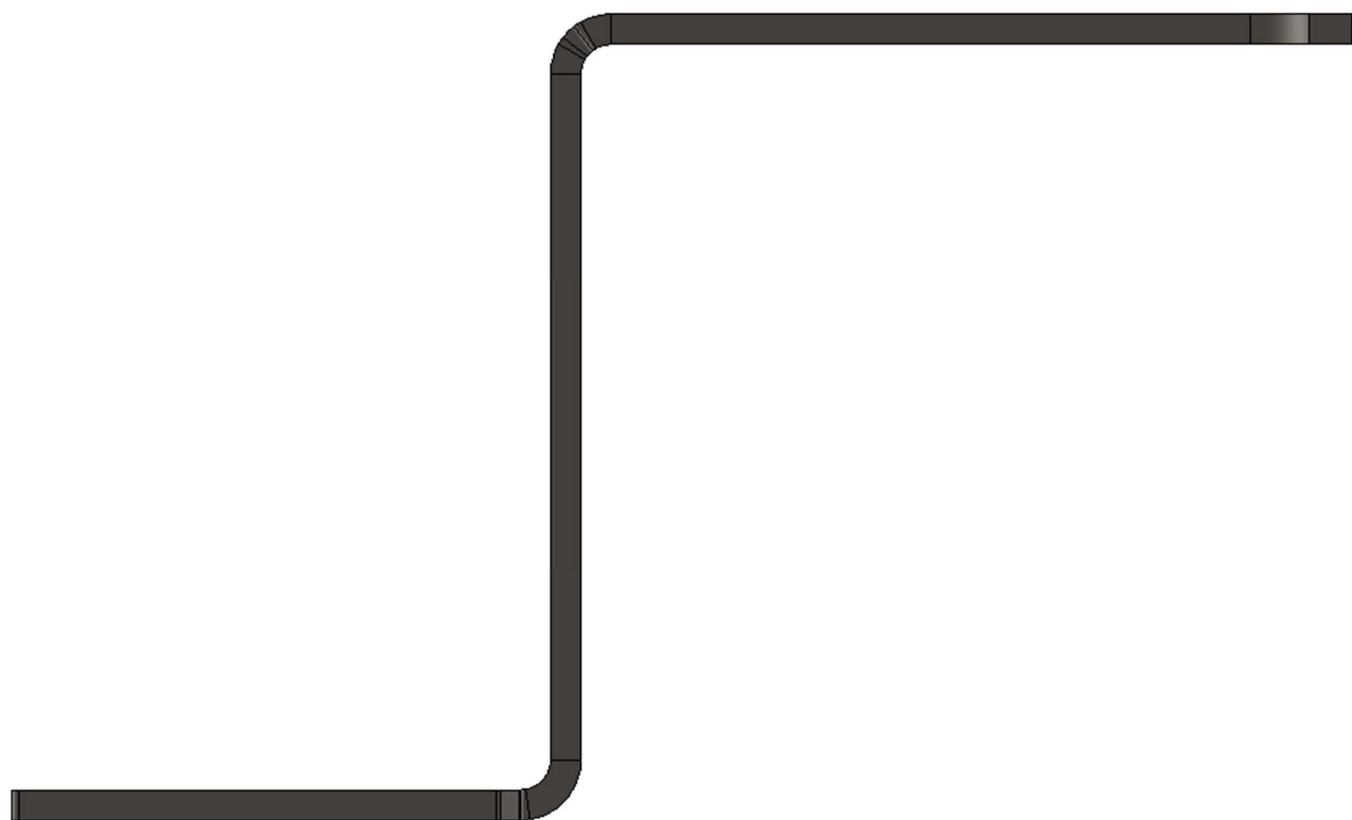


- ii. At the first set of small dimple cutouts, bend the tail downward.



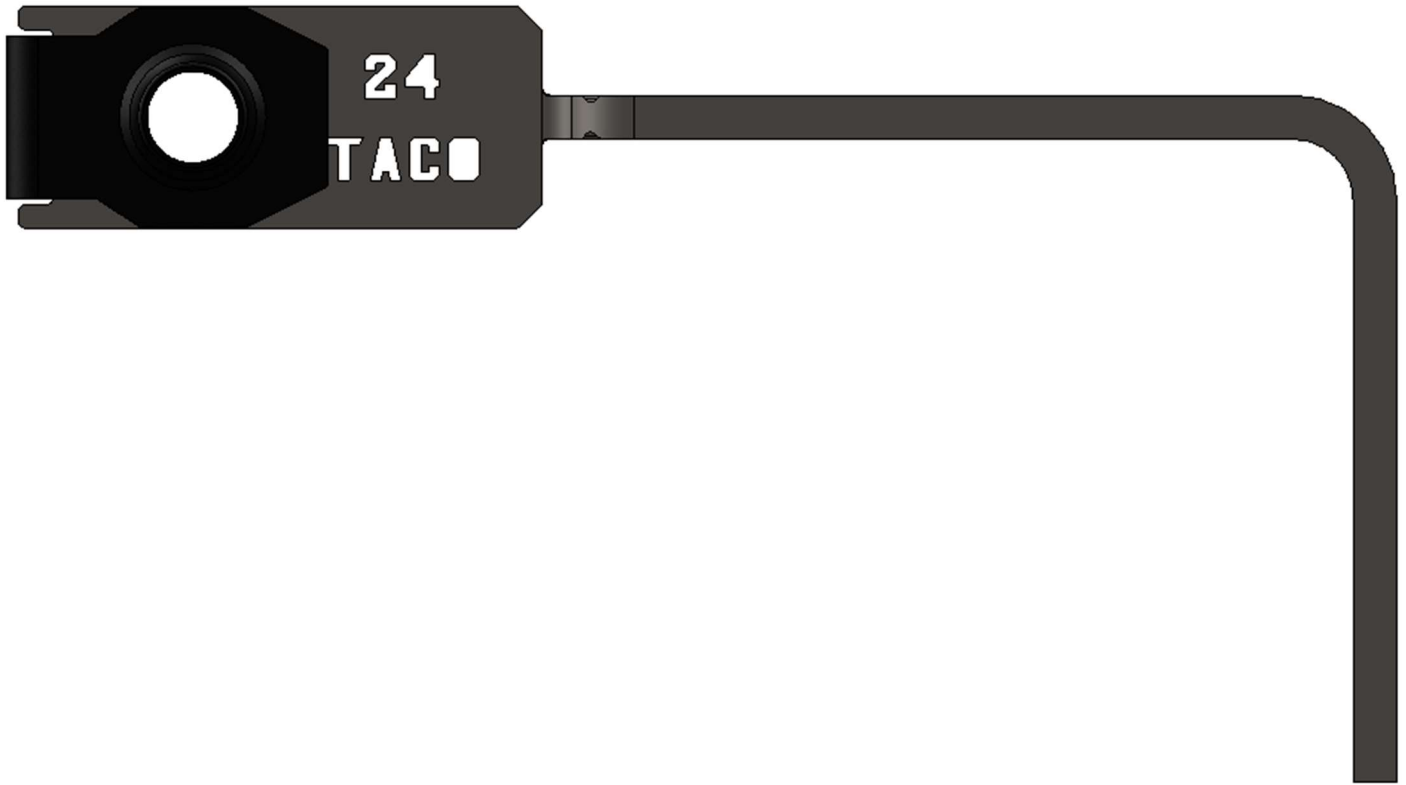
- iii. At the last set of large dimple cutouts, bend the tail to the side. Bend to the right for the passenger side, bend to the left for the driver side.



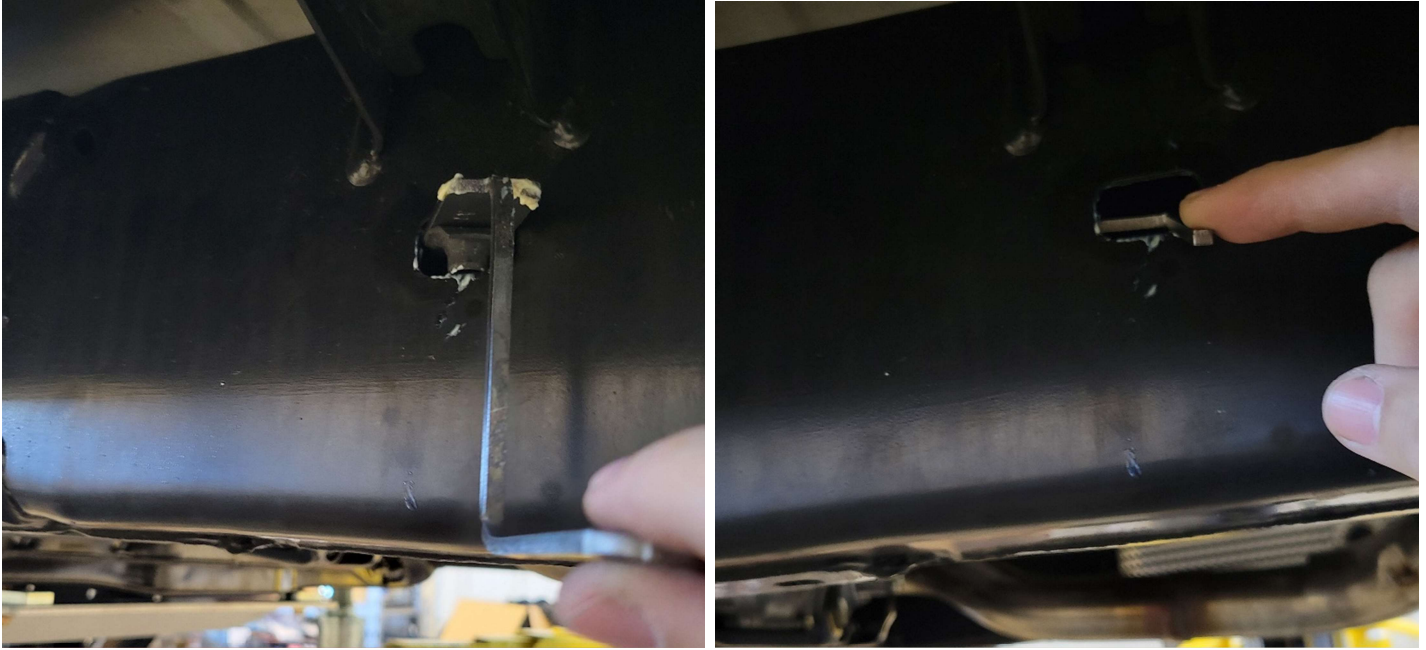




c. Install an M10 speed clip on each nut plate.



- d. Insert the nut plates into the vehicle frame.

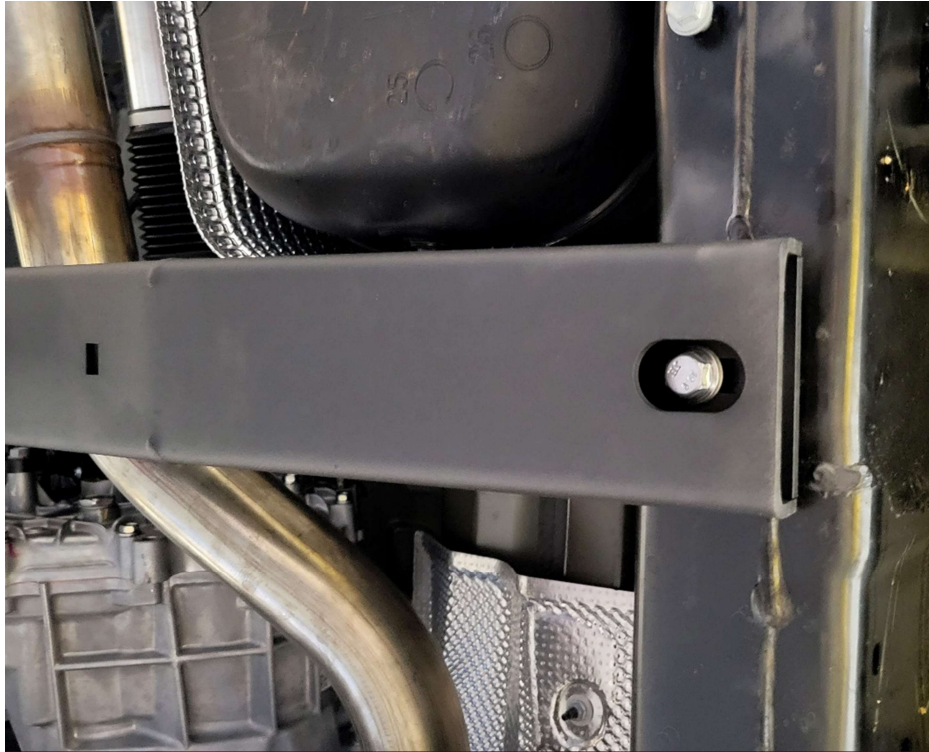


Align the M10 speed clips with the holes in the bottom face of the vehicle frame.



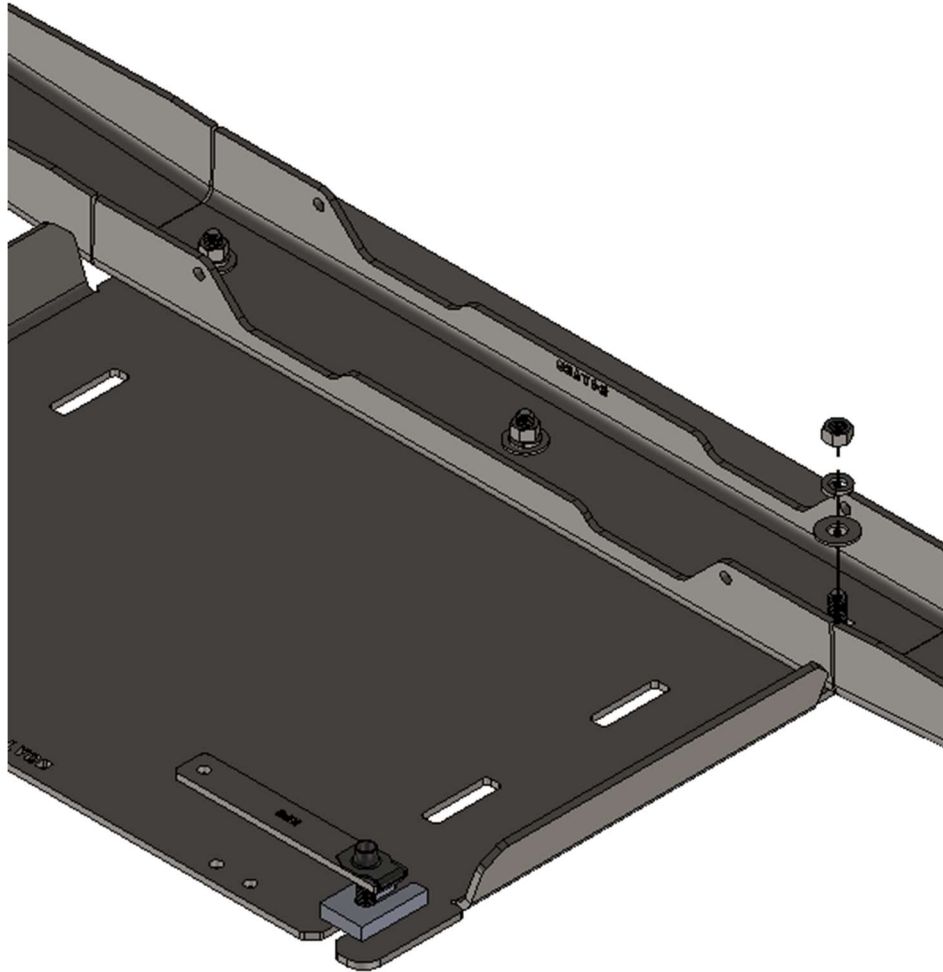
- e. Align the transfer case crossmember with the holes in the bottom face of the vehicle frame and support the center with a floor jack or similar.

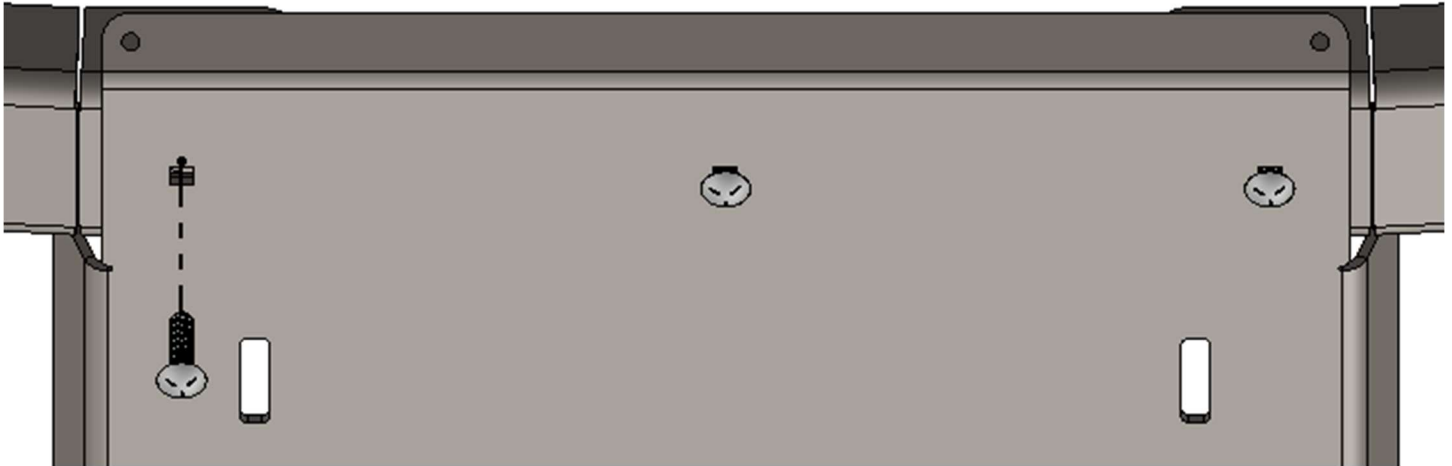
- f. Use the included M10x35mm hardware to loosely secure the crossmember to the nut plates in the frame.



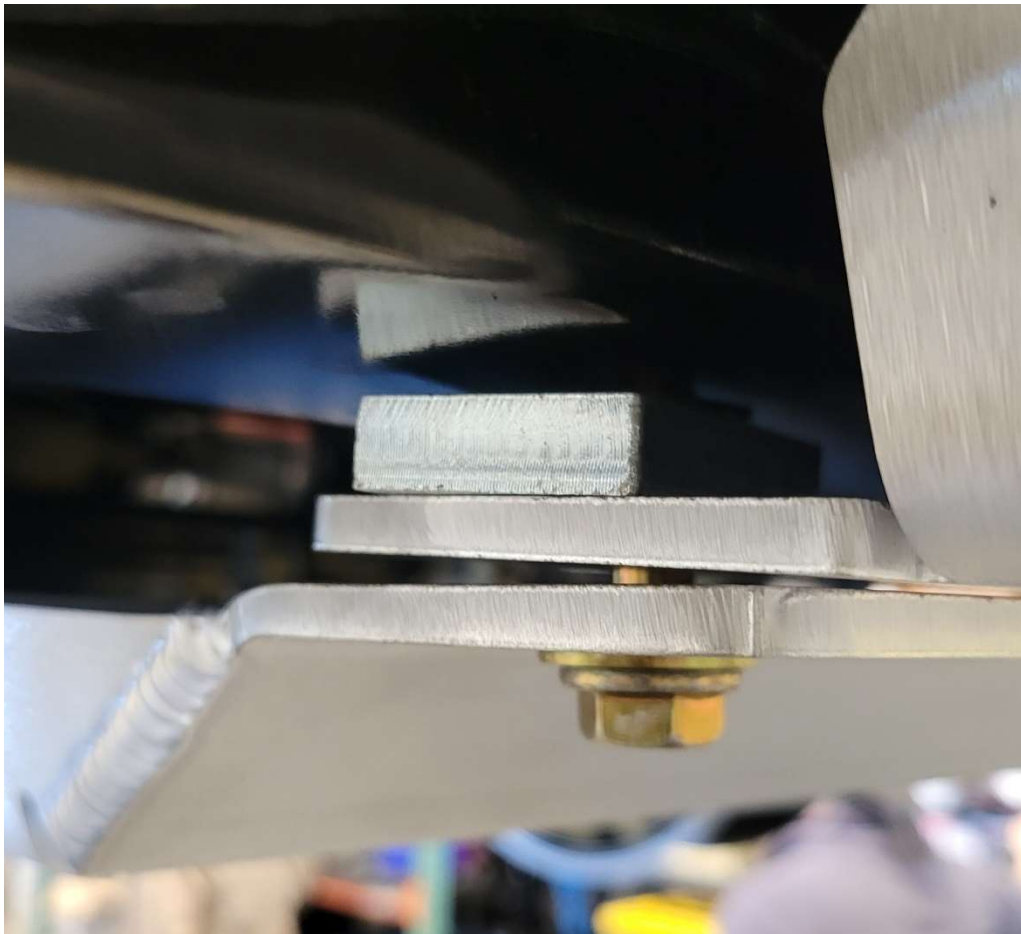
- g. With both sides loosely secured, push the transfer case crossmember towards the front of the vehicle and tighten the M10x35mm hardware.
- 
- 5) Slide the front mounting flange of the transfer case skid plate onto the M8 hardware. The skid plate will sit between the vehicles crossmember and the transmission skid plate or on the washers around the M8 hardware. Apply upward pressure to allow the transfer case skid plate to rest on the lower face of the transfer case crossmember.

- 6) Using a floor jack or similar, hold the skid plate assembly up to the vehicle frame and loosely install the included 3/8" hardware to secure the transfer case skid plate to the transfer case crossmember.



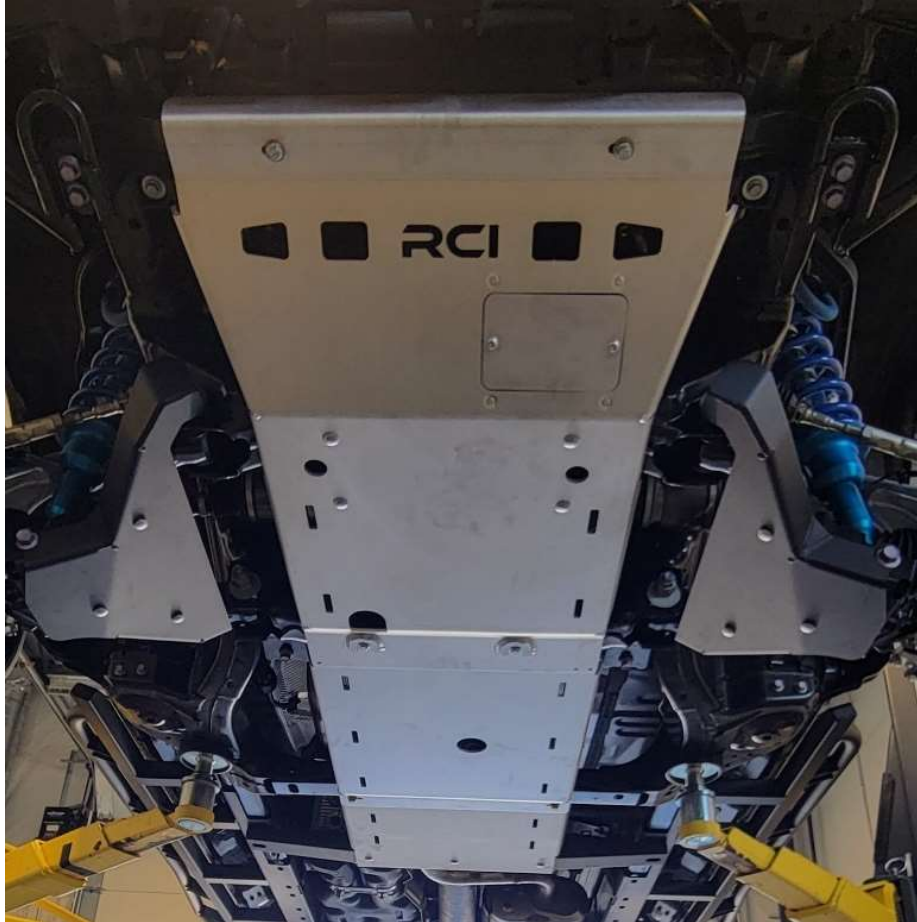


- 7) Slide the included 3/8" transmission spacers between the vehicle crossmember and the front mounting face of the RCI 24+ Tacoma Transfer Case Skid Plate and tighten all hardware.





**Enjoy your new RCI protection!**



**Share your new install with us on social media!**

**We love seeing our products out in the wild!**

[www.rcimetalworks.com](http://www.rcimetalworks.com)

[sales@rcioffroad.com](mailto:sales@rcioffroad.com)

970-797-3089



---

Disclaimer: The products sold by RCI Metalworks are intended for off-road use only, should not be modified, and are for use only on the vehicle(s) specifically stated. RCI Metalworks makes no warranties express or implied, including of fitness for a particular purpose or merchantability. RCI Metalworks will not be liable for any damages arising out of the use or misuse of its products. It is the customers' responsibility to ensure the products are safely and properly attached to the vehicle, and all products should be installed by trained professionals. We strive to maintain extremely high quality standards; however, all RCI Metalworks products are individually handcrafted, may vary slightly, and may contain minor imperfections. Due to the nature of raw aluminum, the material may have minor scratches and other blemishes caused by the manufacturing process, especially on the back side of product. RCI Metalworks is constantly seeking to improve its products and reserves the right to make changes to any product.