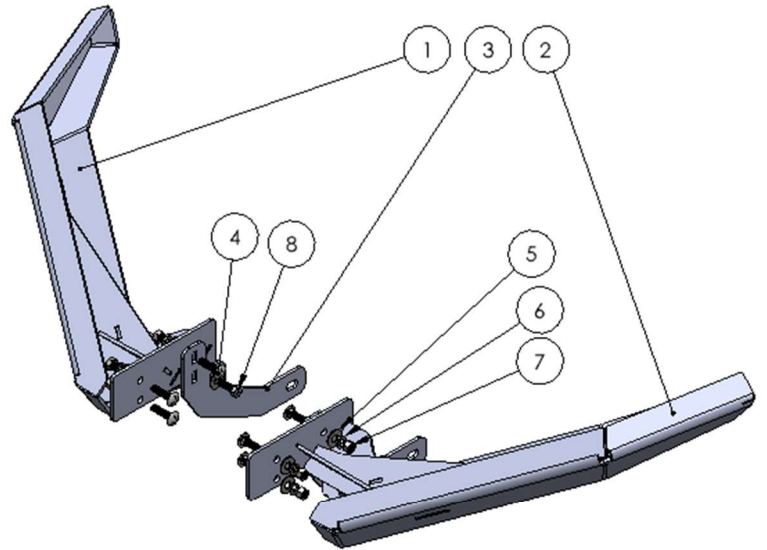


## RCI 14-24 4Runner Pike High Clearance Wings Installation Guide

ITEM NO.	PART NUMBER	DESCRIPTION	QTY.
1	SM-00734 (Passenger)	4runner Pike Wing-Passenger	1
2	SM-00733 (Driver)	4runner Pike Wing-Driver	1
3	SM-00648	.188MS T4R Insert Mounting Bracket	2
4	HW-00035	3/8-16 X 1-1/2 CARRIAGE BOLT	6
5	HW-00026	3/8 USS FLAT WASHER THRU HARD	10
6	HW-00029	3/8 SPLIT LOCK WASHER ZINC	8
7	HW-00030	3/8-16 FIN HEX NUT GR-5 ZINC	8
8	HW-00064	3/8-16 X 1-1/8 HEX CAP SCREW	2



UNLESS OTHERWISE SPECIFIED:	PROPRIETARY AND CONFIDENTIAL	NAME	DATE
DIMENSIONS ARE IN INCHES TOLERANCES: FRACTIONAL $\pm 0.010$ ANGULAR: BEND $\pm 0.5$ TWO PLACE DECIMAL $\pm 0.015$ THREE PLACE DECIMAL $\pm 0.010$	THE INFORMATION CONTAINED IN THIS DRAWING IS THE SOLE PROPERTY OF RCI Offroad. ANY REPRODUCTION IN PART OR AS A WHOLE WITHOUT THE WRITTEN PERMISSION OF RCI Offroad IS PROHIBITED.	DRAWN	NA
		Export Date	
		3/27/2024	
<b>RCI OFFROAD</b>			
TITLE:			
14+4runner Pike High Clearance Wing Install Guide			
Item Number		REV	
Default		1	
DO NOT SCALE DRAWING		SCALE: 1:16	WEIGHT: SHEET 1 OF 1

Figure 1: BOM.

## INSTALLATION STEPS:

**\*\*Use hand tools, impact wrenches may cause damage if over torqued\*\***

- 1) Begin by unpacking and removing all components and hardware. Please verify that all hardware and mounting components are present. Reference your original order invoice and verify all items are accounted for.
  - a. **NOTE: The RCI Pike High Clearance Wings will only work with the 14-24 4Runner Pike Bumpers.**
- 2) Disconnect the fender liner from the front bumper by removing the three screws in the wheel well.



*Figure 2: Fender liner disconnect.*

3) Tape off the bumper as depicted below.



*Figure 3: Tape locations.*



*Figure 4: Tape locations.*

- 4) With a marker measure  $\frac{3}{4}$ " down from the fog light lower angle and mark along the tape.



*Figure 5: Mark  $\frac{3}{4}$ " down.*

- 5) Use a straight edge to trace a solid line along the bumper to the main bends.



*Figure 6: Template correctly installed on bumper.*



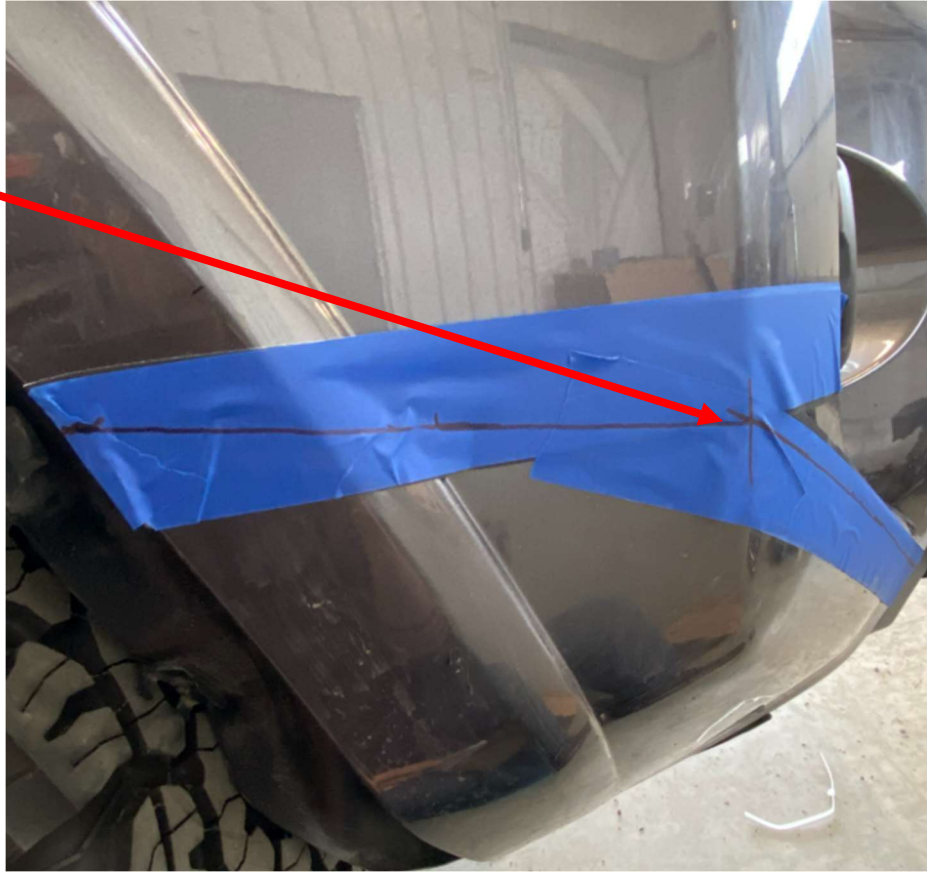
- 6) Locate the second highest mounting hole on the inner wheel well and measure down  $\frac{3}{4}$ " from the center of the hole. Mark a line.



Figure 7: Mark a line  $\frac{3}{4}$ " down from second highest fender liner hole.

- 7) With a straight edge, connect the first line with the mark under the fender liner. Make sure that they are meeting up at the bend in the bumper.

**Make sure lines connect at bend in bumper.**



*Figure 8: Connect fender mark with first line.*

- 8) Finish the cut lines by marking a horizontal line from where the first line meets up with the bend on the front of the bumper.



*Figure 9: Cut Line*

- 9) With all lines marked, use a cutoff wheel or something similar to remove the lower section of the bumper. Cut  $\frac{1}{4}$ " below the line.
  - a. **NOTE: check for wiring behind the bumper before cutting.**
  
- 10) Follow the cut line from where it contacts the Pike bumper out to the wheel well.



11) Use a file or flap disk to clean up the cut line and bring the cut to the marked line.



Figure 10: Example of initial cut.

12) Trim back the fender liners on both wheel wells as depicted below.

a. On the passenger side, make sure to retain the mounting clip on the inboard side.



Figure 11: Passenger side wheel well trim example.





Figure 12: Driver side wheel well trim example.

13) On the passenger side, locate the fog light cover. Mark and cut out a 2" rectangle/

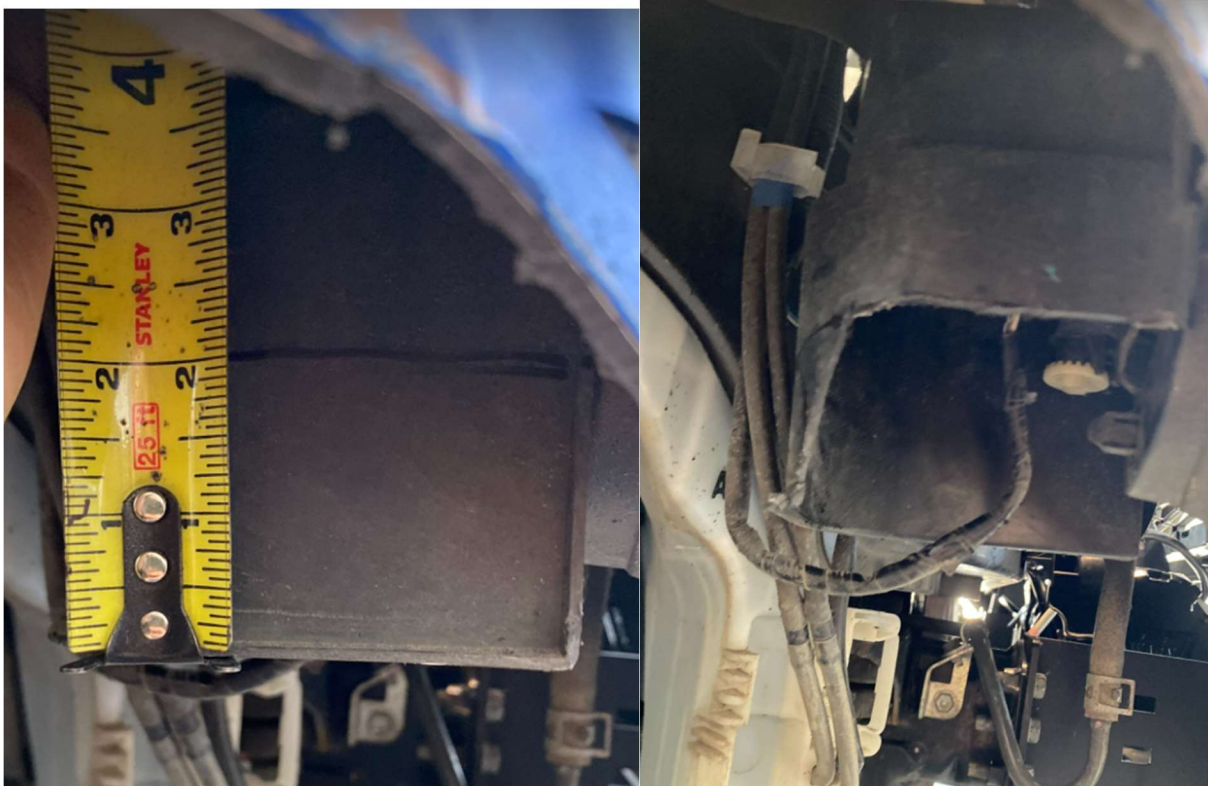
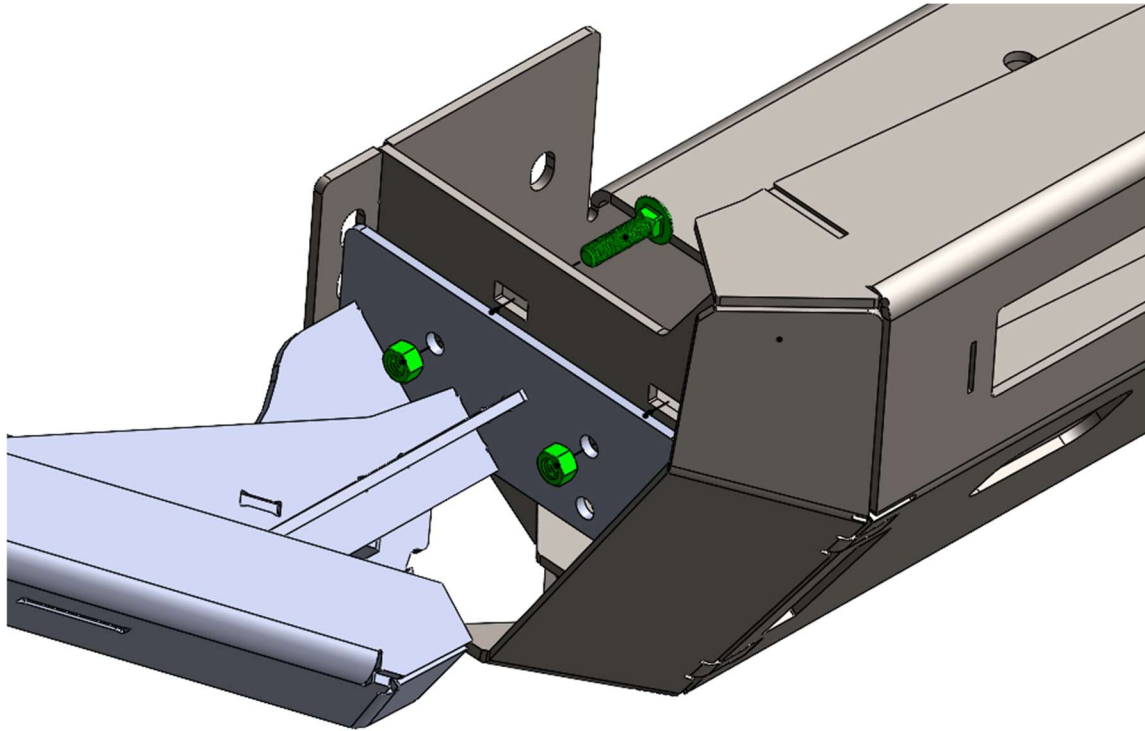


Figure 13: Fog light cover trimming.

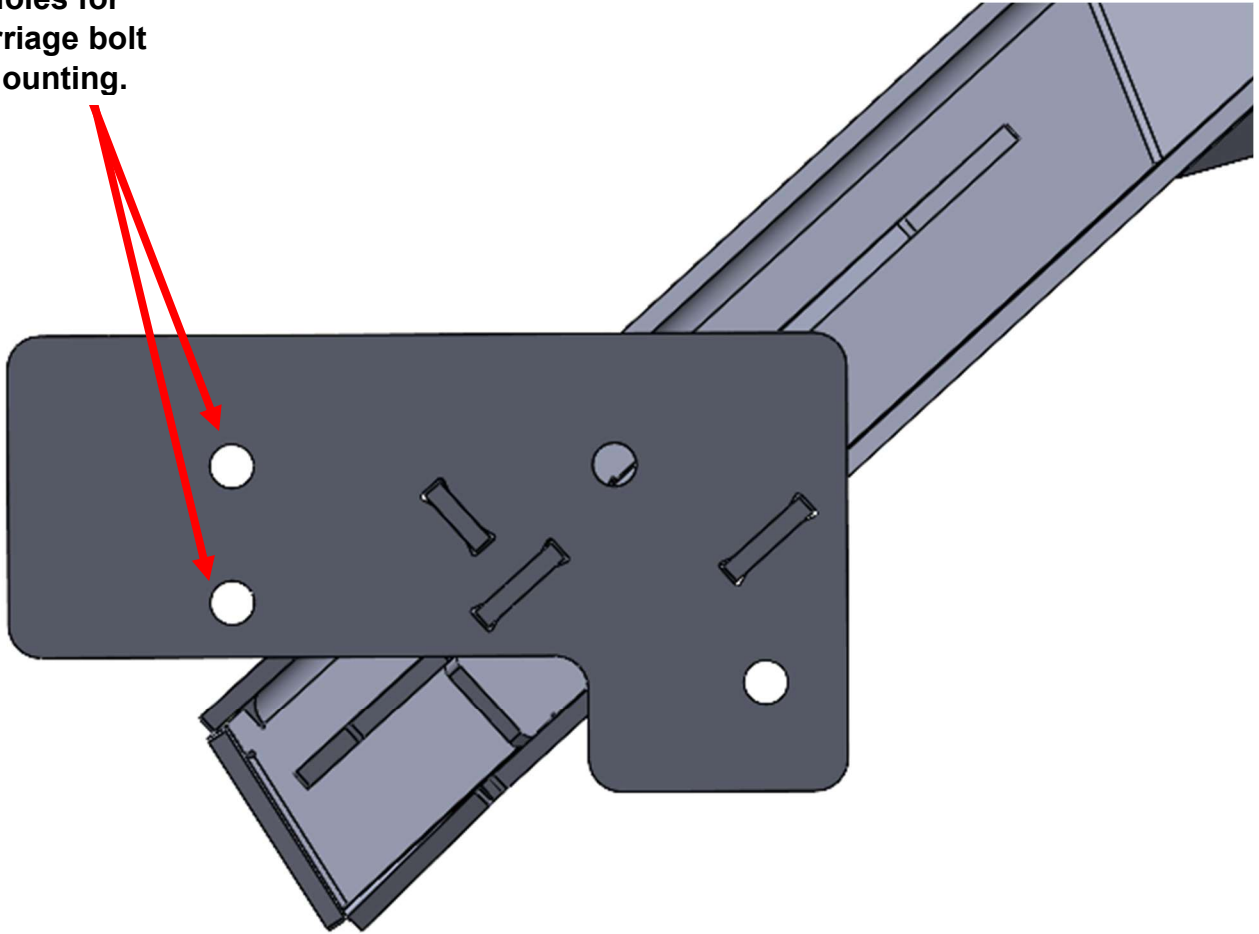
- 14) Before adding any trim to the cut, test fit the wings and trim extra where needed.
  - a. There should be about a 1/4" gap above the wings to where the bumper is cut.
- 15) Remove the side mounting bracket from the bumper.
- 16) Collect the appropriate side wing along with two 3/8" carriage bolts and two 3/8" nuts.
  - a. Test install the wings by mounting them to the side of the bumper in the appropriate slots.



*Figure 14: Use the top two slots for test fitment.*

- 17) Once the bumper is trimmed to liking, RCI recommends purchasing edge trim for the cut edge.
  - a. Recommended edge trim:  
[https://www.amazon.com/SYOAUTO-Guards-Universal-Rubber-Protector/dp/B08Z4F8WMM/ref=sr\\_1\\_5?crid=13UA3D4NCW6Z2&keywords=edge%2Btrim&qid=1705524392&s=automotive&prefix=edge%2Btrim%2Cautomotive%2C224&sr=1-5&th=1](https://www.amazon.com/SYOAUTO-Guards-Universal-Rubber-Protector/dp/B08Z4F8WMM/ref=sr_1_5?crid=13UA3D4NCW6Z2&keywords=edge%2Btrim&qid=1705524392&s=automotive&prefix=edge%2Btrim%2Cautomotive%2C224&sr=1-5&th=1)
- 18) Collect three (2) of the included 3/8" carriage bolts, 3/8" washer, 3/8" lock washer, and 3/8" nuts.
- 19) Install the carriage bolts with the threads facing outwards in the two front most mounting holes.

Holes for carriage bolt mounting.



*Figure 15: First two carriage bolt mounting locations.*

- 20) Hold the appropriate wing in place and align it with the square slots on the Pike bumper.
- 21) With the wing aligned install a 3/8" washer, 3/8" lock washer and 3/8" nut to secure the wing in place.



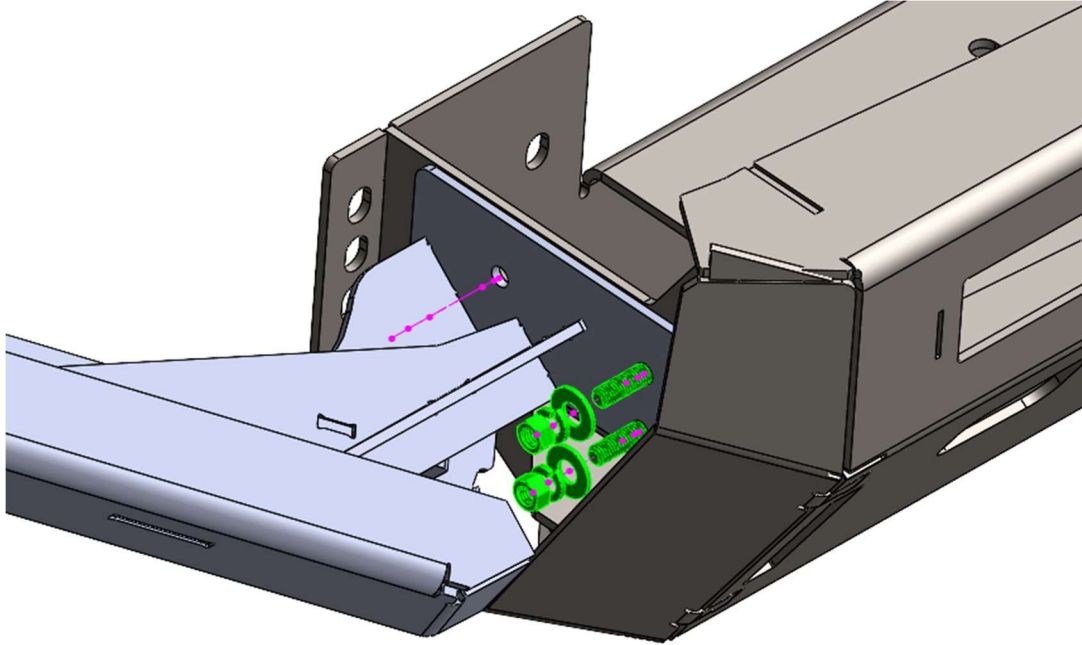


Figure 16: Hardware orientation.

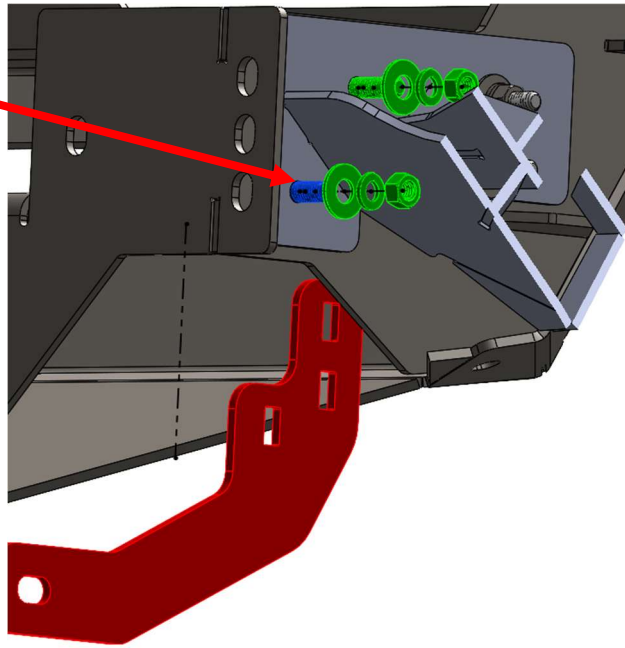
- 22) For older style RCI 4runner Pike bumpers, a 3/8" hole will need to be drilled for the fourth mounting point.
  - a. After drilling a hole, touch up with paint to prevent rusting.



Figure 17: If old style bumper, drill out a 3/8" hole.

- 23) Collect one 3/8" carriage bolt, 3/8" hex bolt, three 3/8" washers, two 3/8" split washers, and 2 3/8" nuts. Also collect one of the new bumper mounting brackets.
- 24) Reinstall the new mounting bracket to the bumper using the remaining two holes.

3/8" Hex Bolt



*Figure 18: Hardware orientation.*

- 25) With all hardware installed, fully tighten all 4 mounting locations.
  - a. Reinstall fender liner retaining screws.



*Figure 19: Correct installation.*

- 26) Repeat the installation process for the opposite side of the vehicle.

**Enjoy your new RCI protection!**



**Share your new install with us on social media!**

**We love seeing our products out in the wild!**

[www.rcimetalworks.com](http://www.rcimetalworks.com)

[sales@rcioffroad.com](mailto:sales@rcioffroad.com)

**970-797-3089**

REV: 1 | 9/29/2022



Disclaimer: The products sold by RCI Metalworks are intended for off-road use only, should not be modified, and are for use only on the vehicle(s) specifically stated. RCI Metalworks makes no warranties express or implied, including of fitness for a particular purpose or merchantability. RCI Metalworks will not be liable for any damages arising out of the use or misuse of its products. It is the customers' responsibility to ensure the products are safely and properly attached to the vehicle, and all products should be installed by trained professionals. We strive to maintain extremely high quality standards; however, all RCI Metalworks products are individually handcrafted, may vary slightly, and may contain minor imperfections. Due to the nature of raw aluminum, the material may have minor scratches and other blemishes caused by the manufacturing process, especially on the back side of product. RCI Metalworks is constantly seeking to improve its products and reserves the right to make changes to any product.