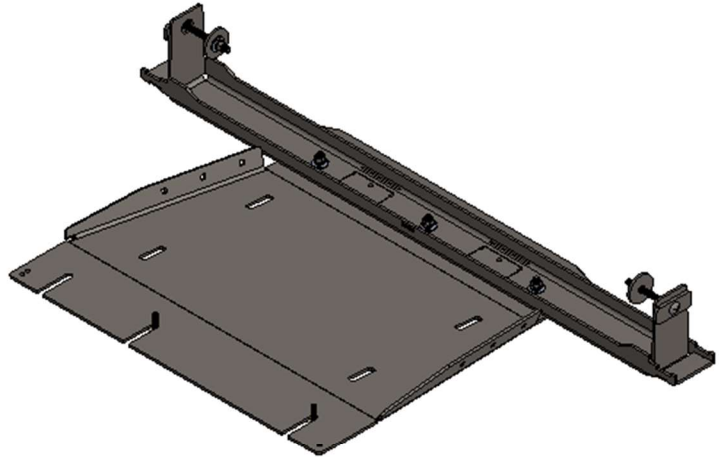


05+ Nissan Frontier T-Case Skid Plate Installation Guide

ITEM NO.	PART NUMBER	DESCRIPTION	QTY.
1	SM-00755	05 Frontier T-case Skid	1
2	SM-00757	05 Frontier Crossmember	1
3	HW-00158	3/8-16 X 1-1/4 CARRIAGE BOLT	3
4	HW-00026	3/8 USS FLAT WASHER THRU HARD	5
5	HW-00029	3/8 SPLIT LOCK WASHER ZINC	5
6	HW-00030	3/8-16 FIN HEX NUT GR-5 ZINC	5
7	HW-00025	M8-1.25 X 30MM HEX FLANGE BOLT	2
8	HW-00037	5/16 USS FLAT WASHER ZINC	2
9	HW-00070	3/8-16 X 4 CARRIAGE BOLT GR-5	2
10	HW-00016	3/8" Reverse carriage bolt plate .25MS	2
11	HW-00028	Full Moon Spacer	2



Sheet1			
RCI OFFROAD			
TITLE:			
05+ Frontier T-Case Skid Install Guide			
Item Number	Sku	REV	
BOM		1	
DO NOT SCALE DRAWING		SCALE: 1:12 WEIGHT:	SHEET 1 OF 1

Figure 1: BOM

INSTALLATION STEPS:

****Use hand tools, impact wrenches may cause damage if over torqued.****

- 1) Begin by unpacking and removing all components and hardware. Please verify that all hardware and mounting components are present. Reference your original order invoice and verify all items are accounted for.
- 2) Collect the 05+ Frontier Crossmember along with two (2) of the following: 3/8" x 3.5" carriage bolts, full moon washers, 3/8" washers, 3/8" split washers, 3/8" hex nuts, and 3/8" reverse carriage bolt plates.
- 3) Hold the crossmember into place aligning the two mounting holes with the slotted through holes on the vehicle frame.
- 4) Install the 3/8" x 4" carriage bolts into the carriage bolt plates and install them from the outside of the vehicle frame with the threads facing in.



- 5) Install the full moon washer, 3/8" washer, 3/8" split washer, and 3/8" hex bolt on the carriage bolt to hold the crossmember in place. Repeat these steps for the opposite side of the vehicle.



Figure 2: Crossmember hardware orientation.

- 6) Push the crossmember as far forward as possible while still resting evenly on the bottom of the frame. Apply upward pressure on the crossmember and fully tighten the 3/8" hardware.



Figure 3: Aligned crossmember.



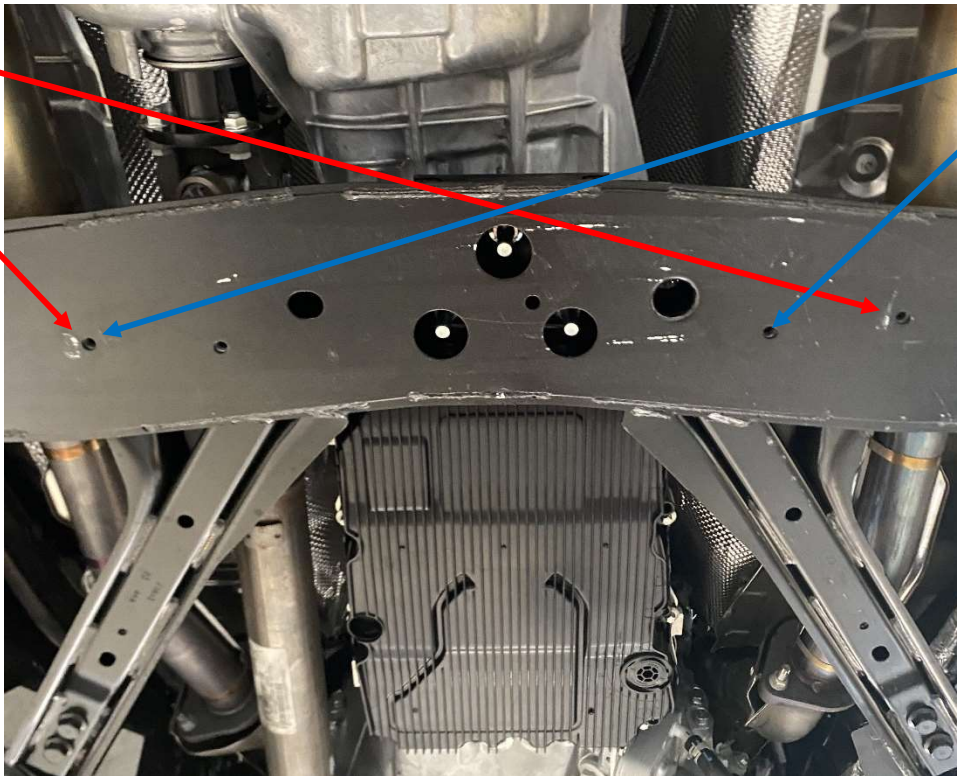
Figure 4: Correctly installed crossmember.

7) With the crossmember fully installed, collect the M8 x 30mm hex bolts with 5/16" washers. Loosely install them on the vehicle crossmember in the holes depicted below.

a. NOTE: There will be one hole that is not used in the front. This is for compatibility with all Nissan Frontier models.

**22+
Frontier
Mounting
Holes**

**05-21
Frontier
Mounting
Holes**



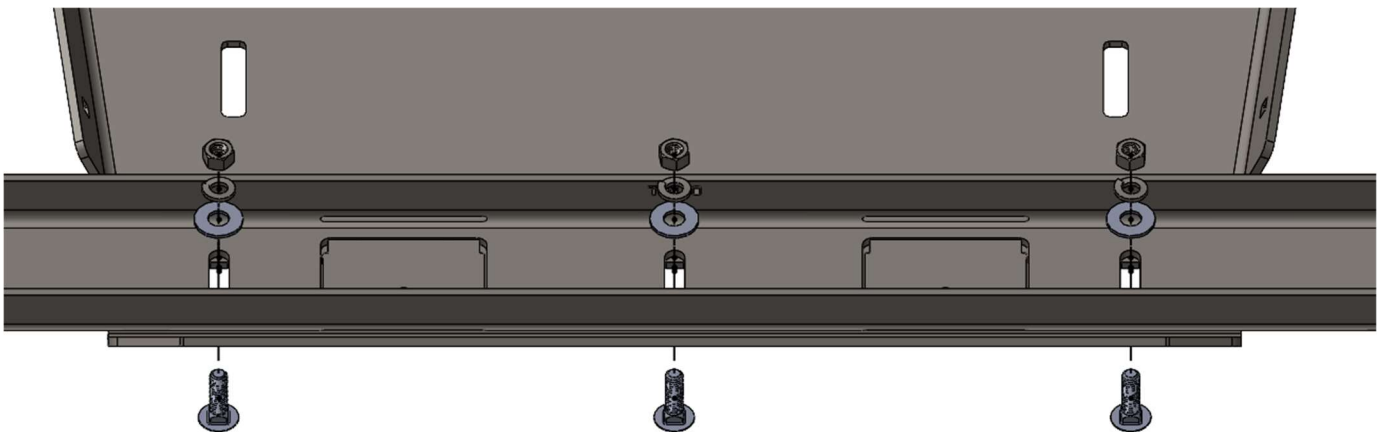
8) Collect the RCI T-case skid plate along with three (3) of the following: 3/8" x 1.25" carriage bolts, 3/8" washers, 3/8" split washers, and 3/8" hex bolts.

- 9) Slide the T-case skid plate into the front two mounting bolts and lift the rear of the skid until it contacts the installed crossmember.



Figure 5: Front mounting of t-case skid.

- 10) Use the 3/8" carriage bolts to secure the rear of the skid plate to the crossmember. Ensure the threads of the carriage bolt are facing up.



- 11) Align the T-case skid plate and fully tighten all hardware.
 - a. If installing with RCI transmission skid plate, install the rear of the transmission skid on top of the t-case skid plate.



Figure 6: Correctly installed t-case skid.

RCI OFFROAD

Enjoy your new RCI protection!



Share your new install with us on social media!

We love seeing our products out in the wild!

www.rcimetalworks.com

sales@rcioffroad.com

970-797-3089



Disclaimer: The products sold by RCI Metalworks are intended for off-road use only, should not be modified, and are for use only on the vehicle(s) specifically stated. RCI Metalworks makes no warranties express or implied, including of fitness for a particular purpose or merchantability. RCI Metalworks will not be liable for any damages arising out of the use or misuse of its products. It is the customers' responsibility to ensure the products are safely and properly attached to the vehicle, and all products should be installed by trained professionals. We strive to maintain extremely high quality standards; however, all RCI Metalworks products are individually handcrafted, may vary slightly, and may contain minor imperfections. Due to the nature of raw aluminum, the material may have minor scratches and other blemishes caused by the manufacturing process, especially on the back side of product. RCI Metalworks is constantly seeking to improve its products and reserves the right to make changes to any product.