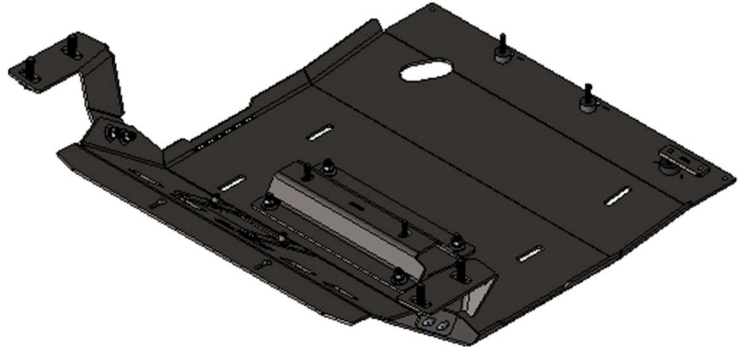


05+ Nissan Frontier Engine Skid Plate

Installation Guide

ITEM NO.	PART NUMBER	DESCRIPTION	QTY.
1	SM-00751	05 Frontier Engine Skid	1
2	SM-00760	05 Frontier Engine Bracket Passenger	1
3	SM-00761	05 Frontier Engine Bracket Driver	1
4	SM-00759	05 Frontier Center Mount	1
5	HW-00158	3/8-16 X 1-1/4 CARRIAGE BOLT	8
6	HW-00026	3/8 USS FLAT WASHER THRU HARD	9
7	HW-00029	3/8 SPLIT LOCK WASHER ZINC	8
8	HW-00030	3/8-16 FIN HEX NUT GR-5 ZINC	8
9	HW-00080	1/4-20 X 3/4 CARRIAGE BOLT	2
10	HW-00025	M8-1.25 X 30MM HEX FLANGE BOLT	2
11	HW-00037	5/16 USS FLAT WASHER ZINC	4
12	HW-00069	M8-1.25 X 50MM HEX FLANGE BOLT	2
13	HW-00019	1/4 SAE FLAT WASHER BLK ZINC	2
14	HW-00081	1/4-20 NYLON INSERT STD LOCK	2
15	HW-00082	1273-B: 1/4 PUSH ON BOLT	2
16	HW-00076	3/8 ID X 1 OD X 1/2 LONG Nylon Spacer	2
17	HW-00104	Mounting Plate #2 .25MS R2	1
18	HW-00012	1/2ID X 1-1/4OD X 1/2 LONG NYLON SPACER	1
19	HW-00088	M10-1.5 X 40MM NON SERRATED	1
20	HW-00057	M12-1.25 X 40MM HEX FLANGE	4
21	HW-00022	1/2 USS FLAT WASHER THRU HARD	4



RCI OFFROAD			
TITLE:			
05+ Nissan Frontier Engine Skid Install Guide			
Item Number	Sku		REV
BOM			1
DO NOT SCALE DRAWING		SCALE: 1:24	WEIGHT:
			SHEET 1 OF 1

Figure 1: BOM

INSTALLATION STEPS:

****Use hand tools, impact wrenches may cause damage if over torqued.****

- 1) Begin by unpacking and removing all components and hardware. Please verify that all hardware and mounting components are present. Reference your original order invoice and verify all items are accounted for.
- 2) Install the two (2) engine skid brackets and engine center mount on the engine skid plate with the provide 3/8" x 1.25" carriage bolts, 3/8" washers, 3/8" split washers, and 3/8" hex nuts.
 - a. Install the brackets as depicted below.

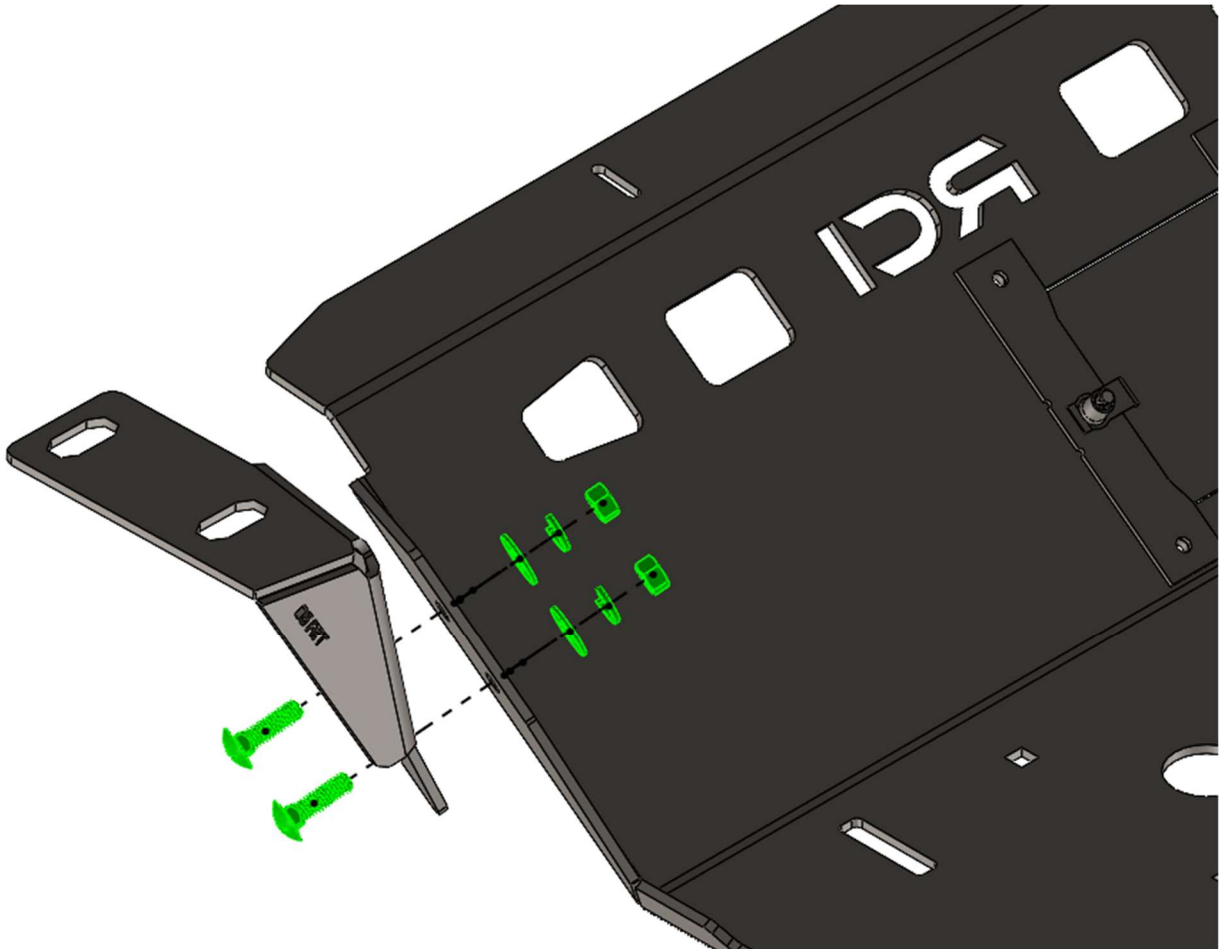


Figure 2: Install orientation of driver engine bracket.

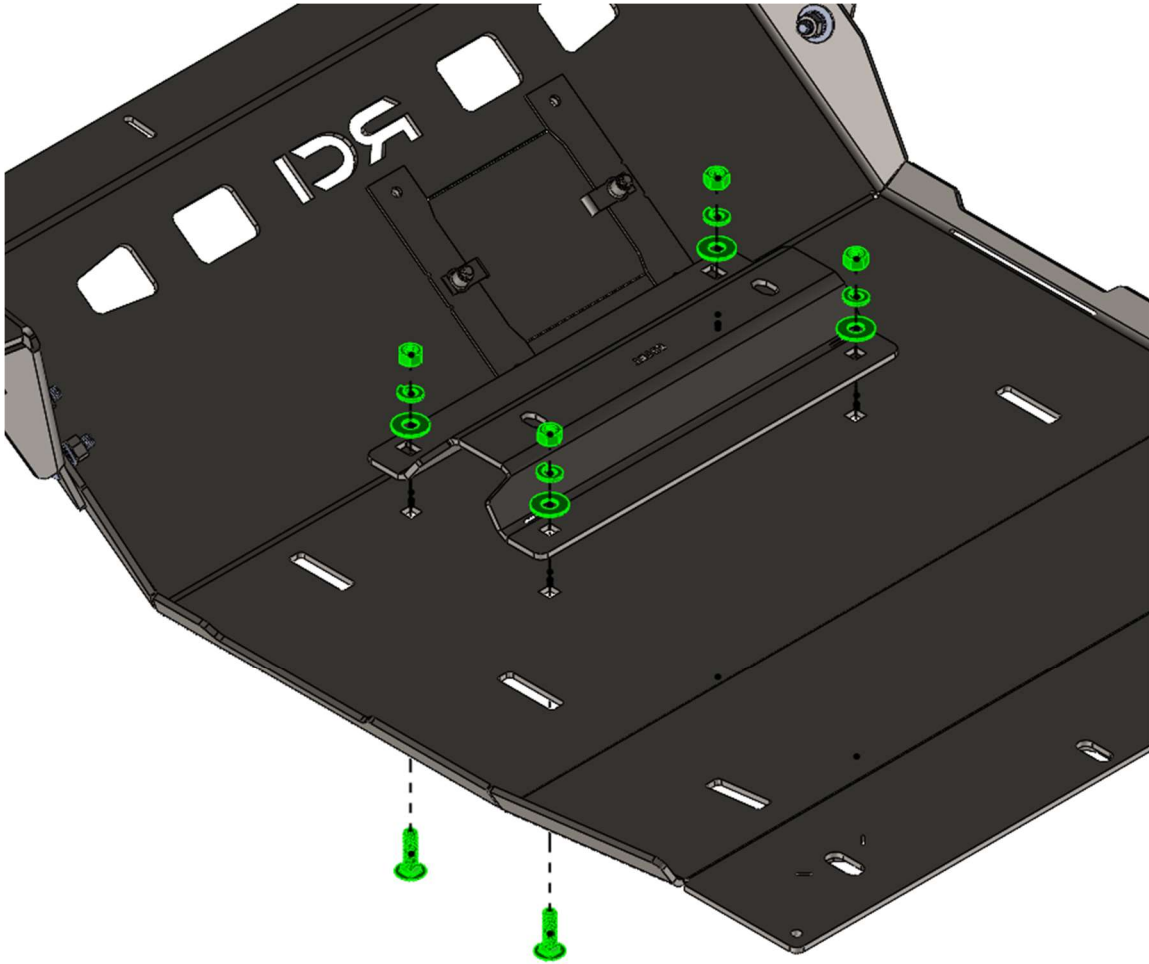


Figure 3: Install orientation of center mount.

- 1) Fully tighten all engine skid brackets.
- 3) If applicable, remove OEM front skid plates and front tow hooks from the truck.



Figure 4: OEM bolts to remove (Pro 4X model shown).

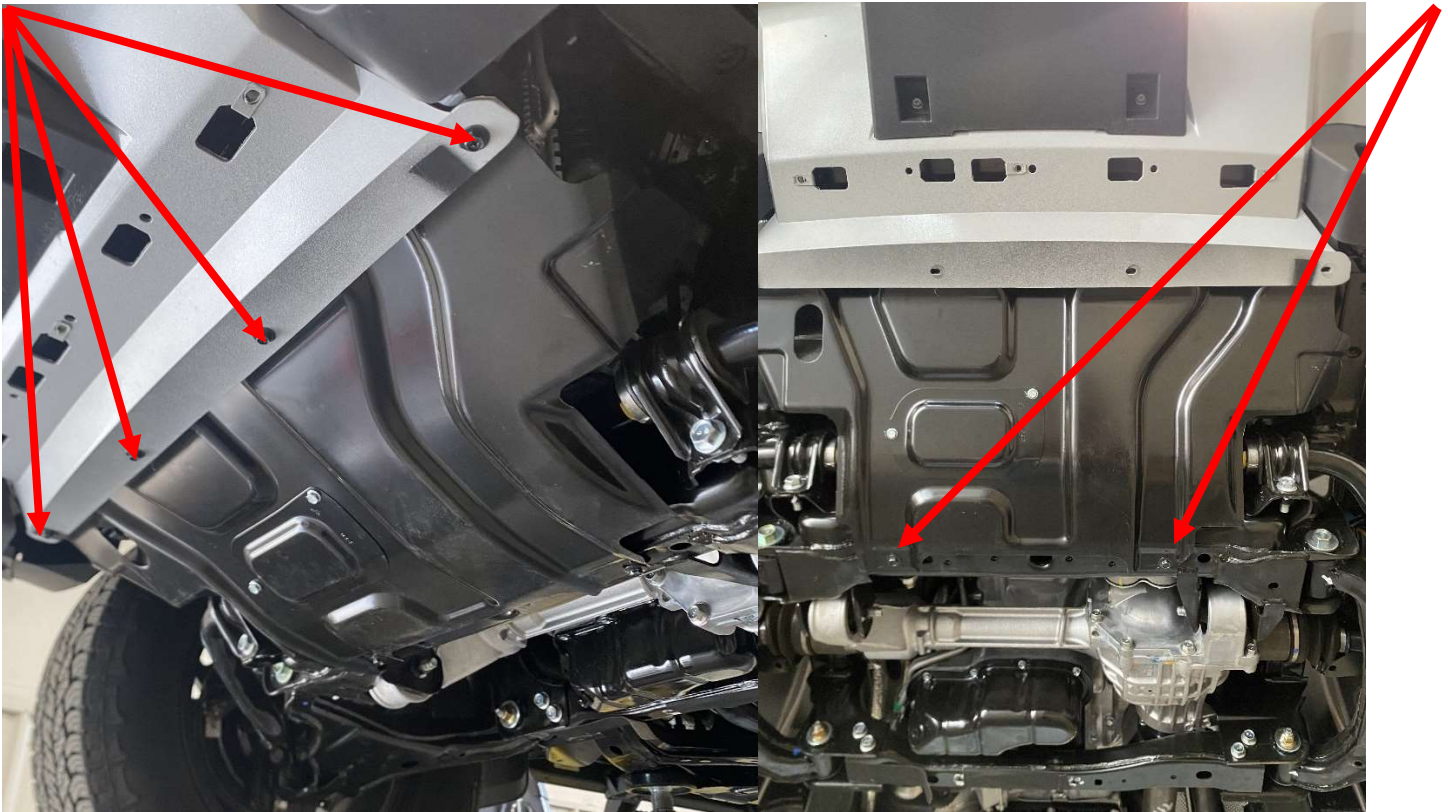


Figure 5: Remove front skid.

- 4) On a 2022+ Frontier the front two mounting bolts for the OEM engine skid are hidden under the front bumper trim.



Figure 6: Engine skid bolt location.

- 5) Collect the two (2) 1/4" carriage bolts, 1/4" washer, 1/4" locknut, and 1/4" retaining washer.
- 6) Install the carriage bolts facing down in the frontmost slots on the engine skid plate. Install the retaining washer on the threads to keep it in place during the install.

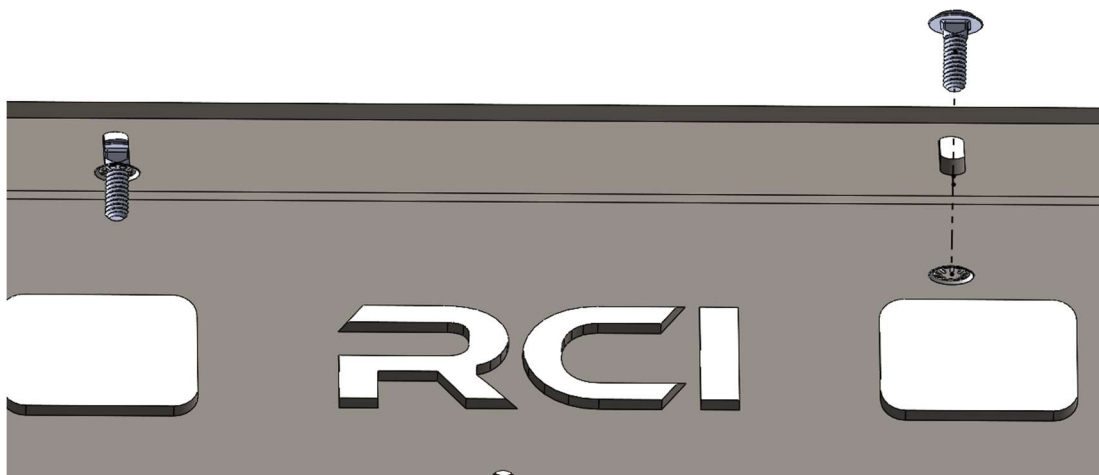


Figure 7: Correct installation of hardware.

- 7) Lift the skid plate into position.
 - a. The two engine brackets mount in the factory tow hook location with the provided M12 bolts and 1/2" washers.

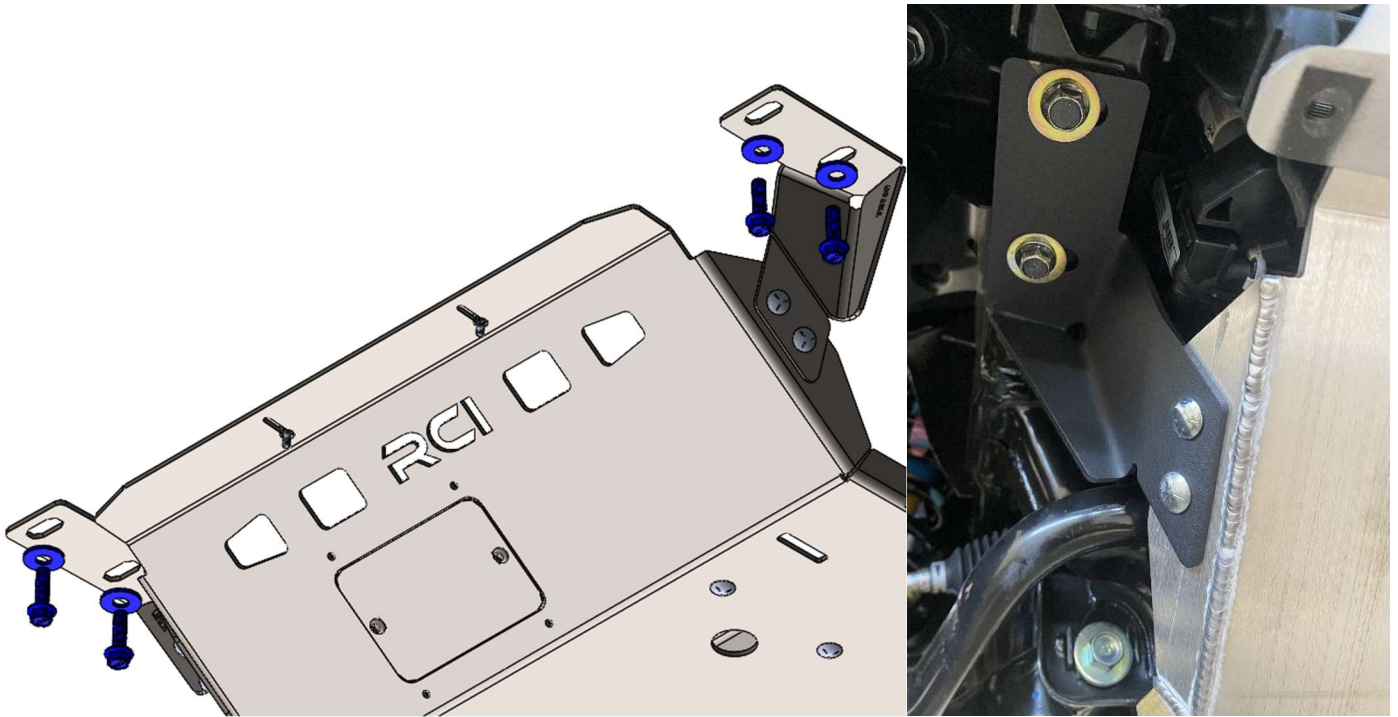


Figure 8: Correct front bracket installation.

- b. The center two mounting locations use the M8 x 30mm bolts with 5/16" washers.

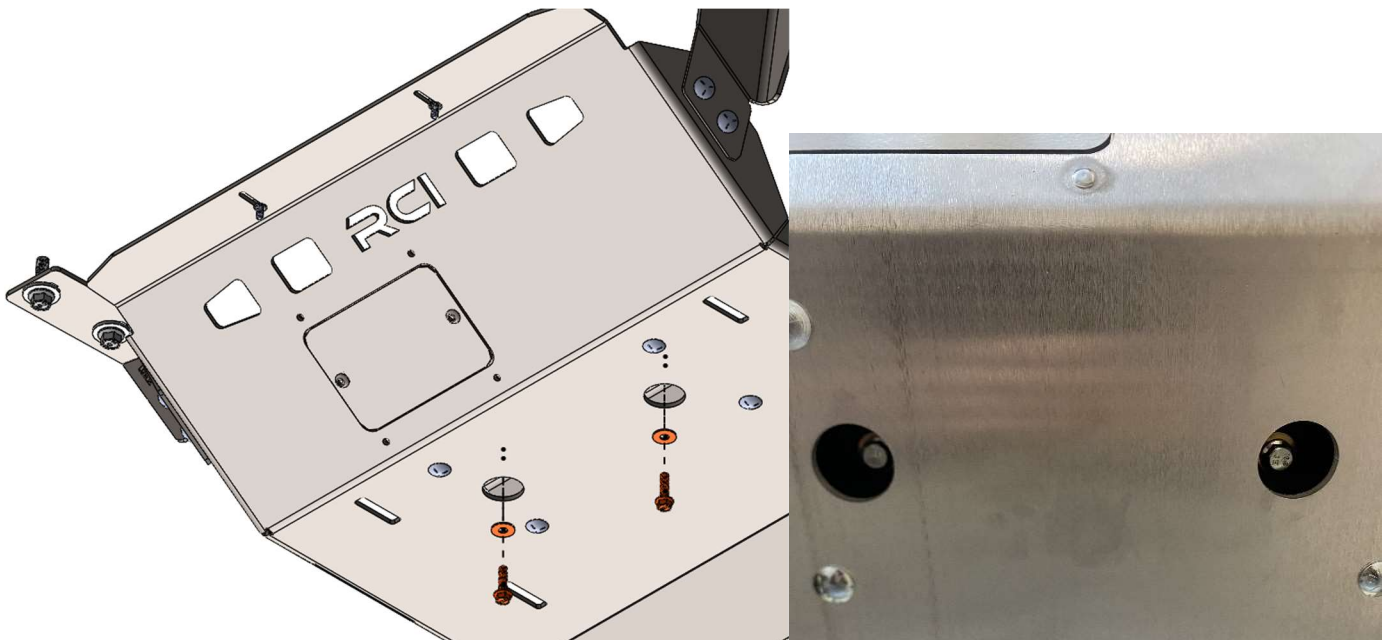


Figure 9: Correct mounting of center mounts.

- c. The rear most mounting locations use the M8 x 50mm bolts with 5/16" washers in the two slots that line up with the threaded holes on the crossmember.

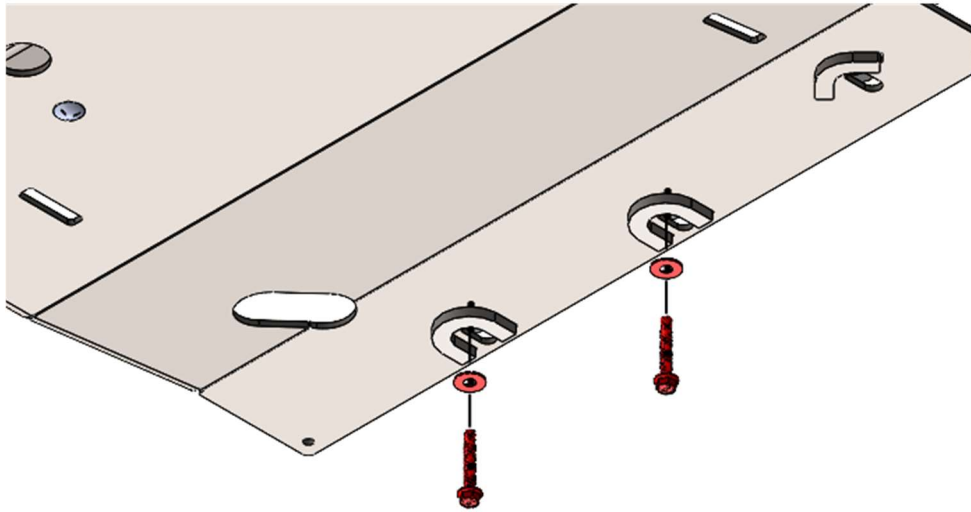


Figure 10: M8 hardware installation.

- d. The rear driver mounting location uses the M10 hex bolt with a 3/8" washer and will thread into the provided MP2 mounting plate after it has been aligned into the frame.

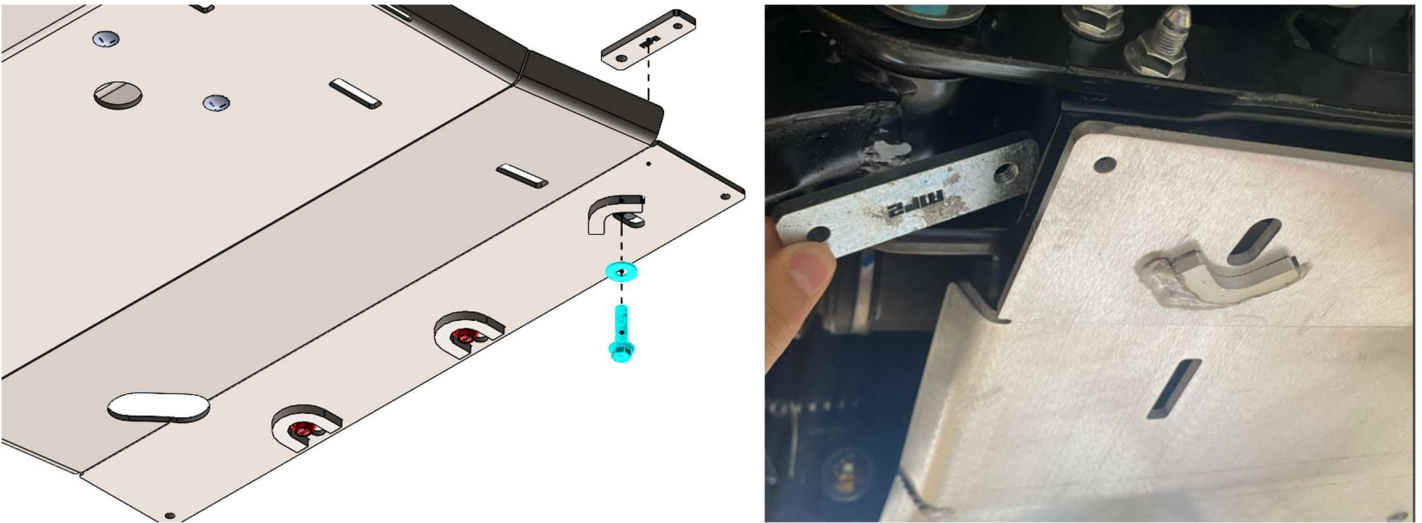
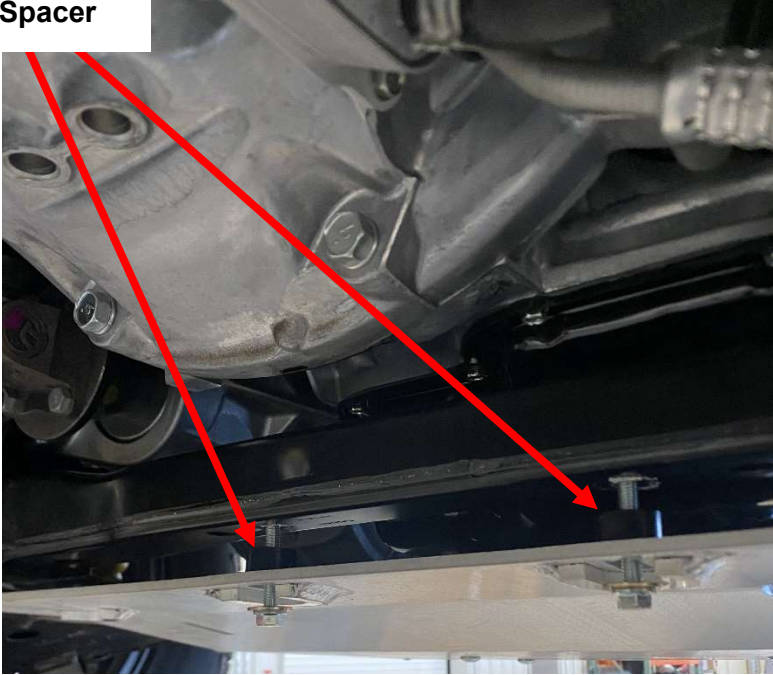


Figure 11: M10 hardware installation.

- e. All three rearmost mounting locations need nylon spacers that will mount between the skid plate and the vehicle frame.
 - i. The 3/8" nylon spacers are used with the M8 bolts and the 7/16" nylon spacer is used with the M10 bolt.

**3/8" Nylon
Spacer**



**7/16" Nylon
Spacer**



Figure 12:Nylon spacer placement.

- 8) The 1/4" carriage bolts in the front of the skid need to be aligned with the holes on the front bumper trim. Install the provided 1/4" washers and 1/4" locknut to secure it to the skid plate.



Figure 13:Correct hardware installation.

- 9) If desired, reinstall the OEM tow hooks on top of the new front engine brackets as depicted below.

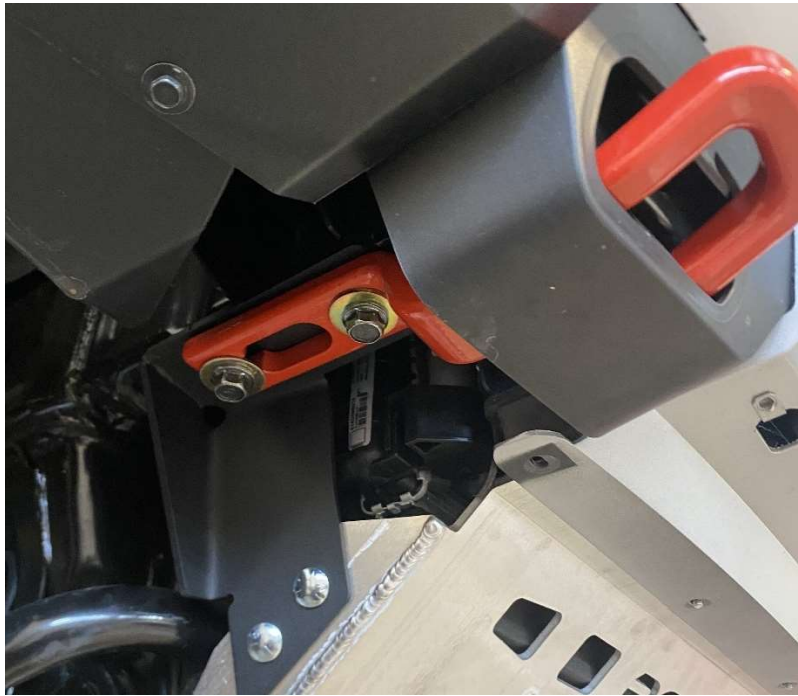


Figure 14: Reinstall OEM tow hooks.

- 10) Align the skid plate and fully tighten all hardware.
- a. If installing with RCI transmission skid plate, install the front of the transmission skid under the rear of the engine skid plate prior to tightening engine hardware.



Enjoy your new RCI protection!



Share your new install with us on social media!

We love seeing our products out in the wild!

www.rcimetalworks.com

sales@rcioffroad.com

970-797-3089



Disclaimer: The products sold by RCI Metalworks are intended for off-road use only, should not be modified, and are for use only on the vehicle(s) specifically stated. RCI Metalworks makes no warranties express or implied, including of fitness for a particular purpose or merchantability. RCI Metalworks will not be liable for any damages arising out of the use or misuse of its products. It is the customers' responsibility to ensure the products are safely and properly attached to the vehicle, and all products should be installed by trained professionals. We strive to maintain extremely high quality standards; however, all RCI Metalworks products are individually handcrafted, may vary slightly, and may contain minor imperfections. Due to the nature of raw aluminum, the material may have minor scratches and other blemishes caused by the manufacturing process, especially on the back side of product. RCI Metalworks is constantly seeking to improve its products and reserves the right to make changes to any product.