

RCI 07-21 Tundra/08-22 Sequoia Catalytic Guard Installation Guide

ITEM NO.	PART NUMBER	DESCRIPTION	QTY.
1	SM-00127	2G Tundra Passenger Front CatGuard	1
2	SM-00128	2G Tundra Driver Front CatGuard	1
3	SM-00129	07-21 Tundra Rear Cat Passenger	1
4	SM-00130	2G Tundra Rear CatGuard Driver	1
5	SM-00131	.135 MS Retro T-Case and Engine Skid Mount Plate R.2	1
6	HW-00061	5/16-18 X 1 CARRIAGE BOLT GR-5	12
7	HW-00037	5/16 USS FLAT WASHER ZINC	14
8	HW-00062	5/16-18 NYLON INSERT LOCK NUT	12
9	HW-00087	M8-1.25 X 100MM HEX FLANGE	2
10	92148A200	18-8 Stainless Steel Split Lock Washer	2
11	HW-00024	5557B: M8-1.25 U-NUT BLACK	2

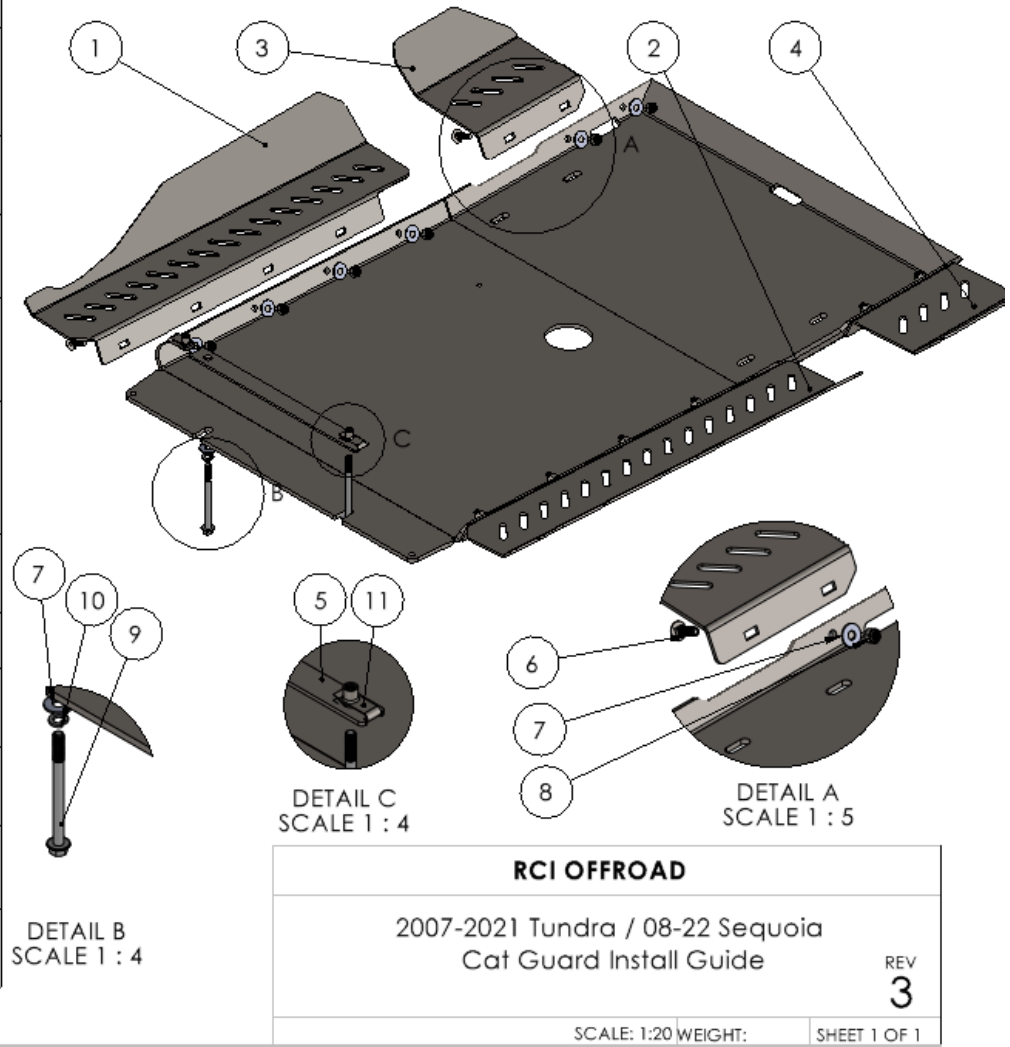


Figure 1: BOM

INSTALLATION STEPS:

****Use hand tools, impact wrenches may cause damage if over torqued****

- 1) Begin by unpacking and removing all components and hardware. Please verify that all hardware and mounting components are present. Reference your original order invoice and verify all items are accounted for.
- 2) If an RCI Toyota Transmission Skid Plate is currently installed on the vehicle, it will need to be removed prior to beginning the installation.
 - a. **NOTE: If the transmission & transfer case skid plate was purchased prior to June of 2022 it will not have precut holes for the catalytic guard, reference Appendix A.**
- 3) Install the provided 5/16" carriage bolts with 5/16" washers and 5/16" Nylock nuts.
- 4) Ensure the catalytic guards are aligned on the outside of the skid plates and the carriage bolts are also installed with the heads on the outside. Reference the figure below.

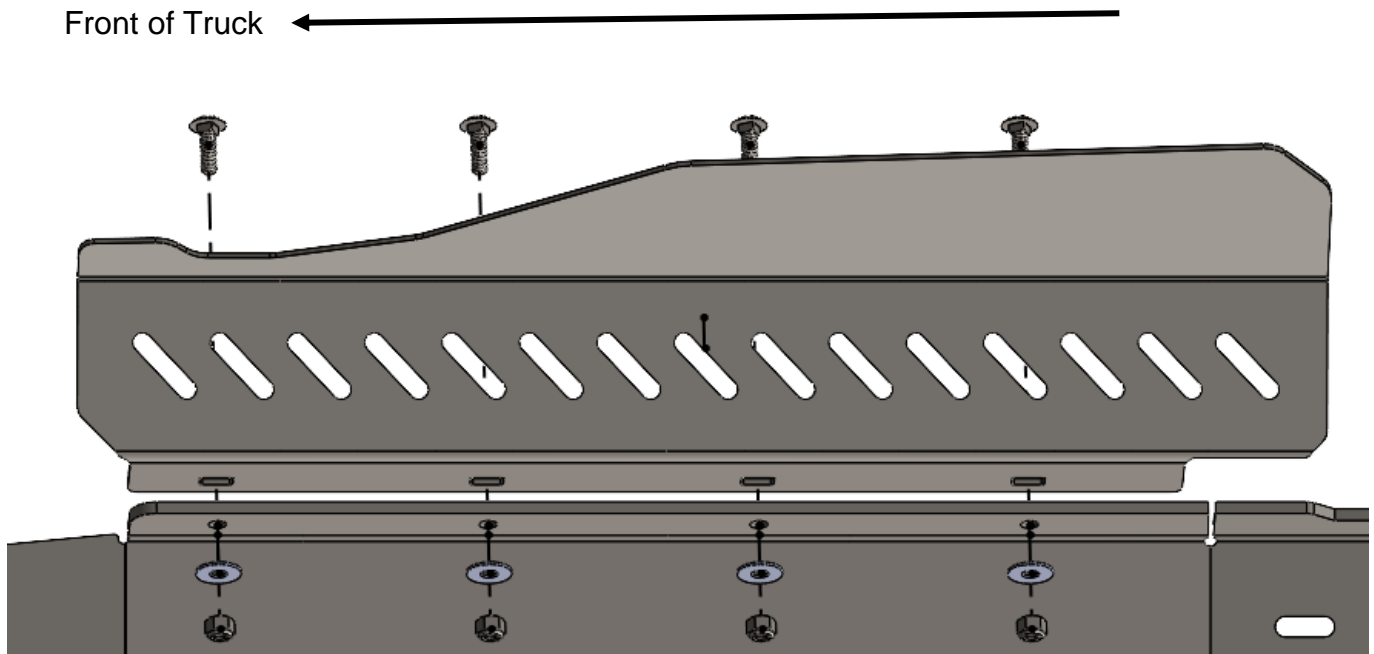


Figure 2: Correct hardware orientation

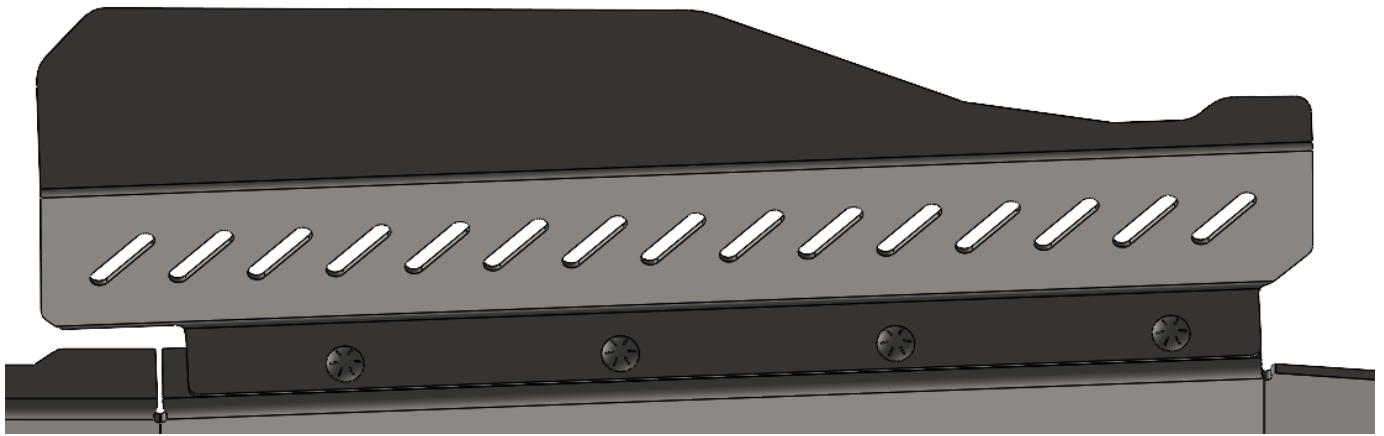


Figure 3: Outside view of installed hardware

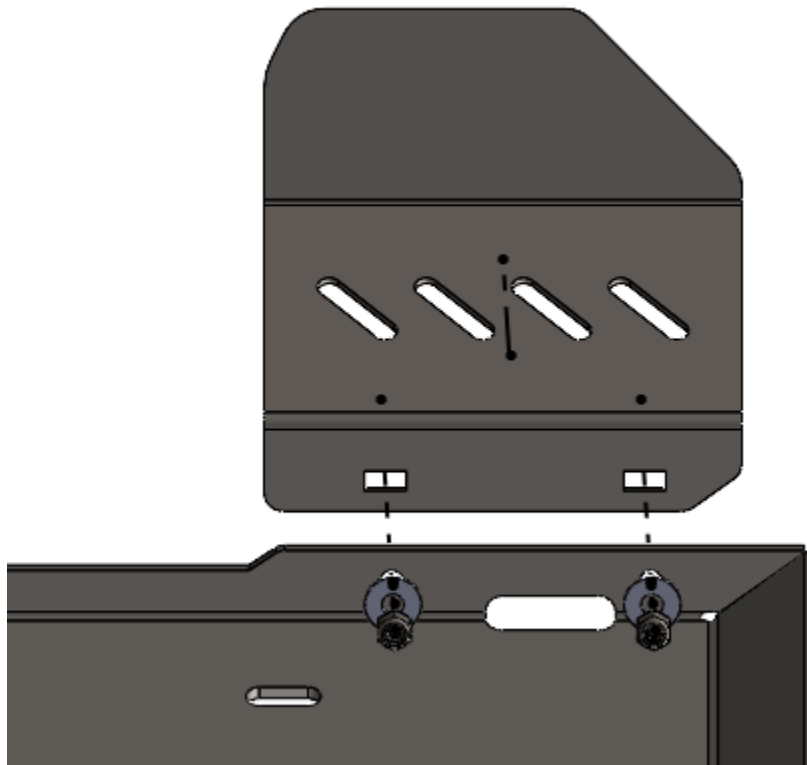


Figure 4: Correct hardware orientation

Front of Truck ←

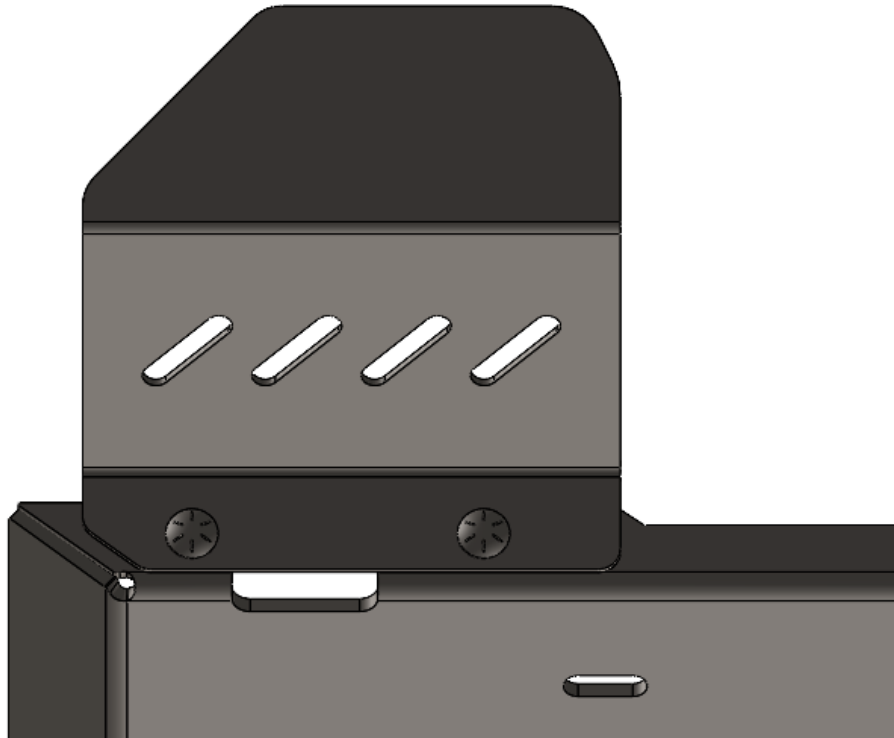


Figure 5: Outside view of installed hardware

- 5) Before reinstalling the transmission skid plate, the newly provided transmission/engine skid mount plate needs to be aligned on top of the vehicles crossmember.
- 6) Install the two speed clips on either side of the Engine/Transmission Retrofit Mount Plate as depicted below.

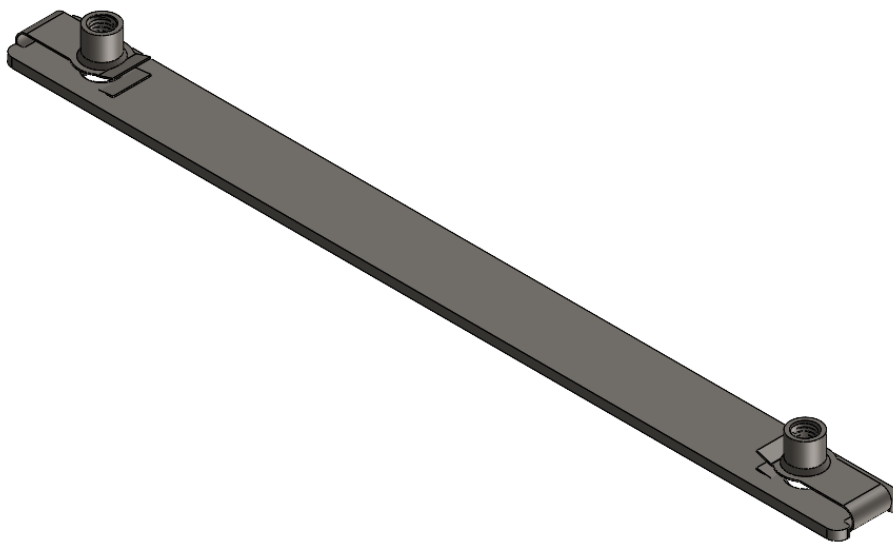


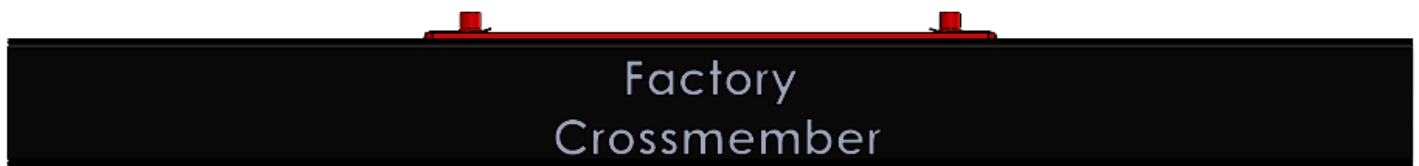
Figure 6: Correct installation of speed clips on mount plate

- 7) Mount a 5/16" washer and M8 split washer on each of the M8 Bolts.

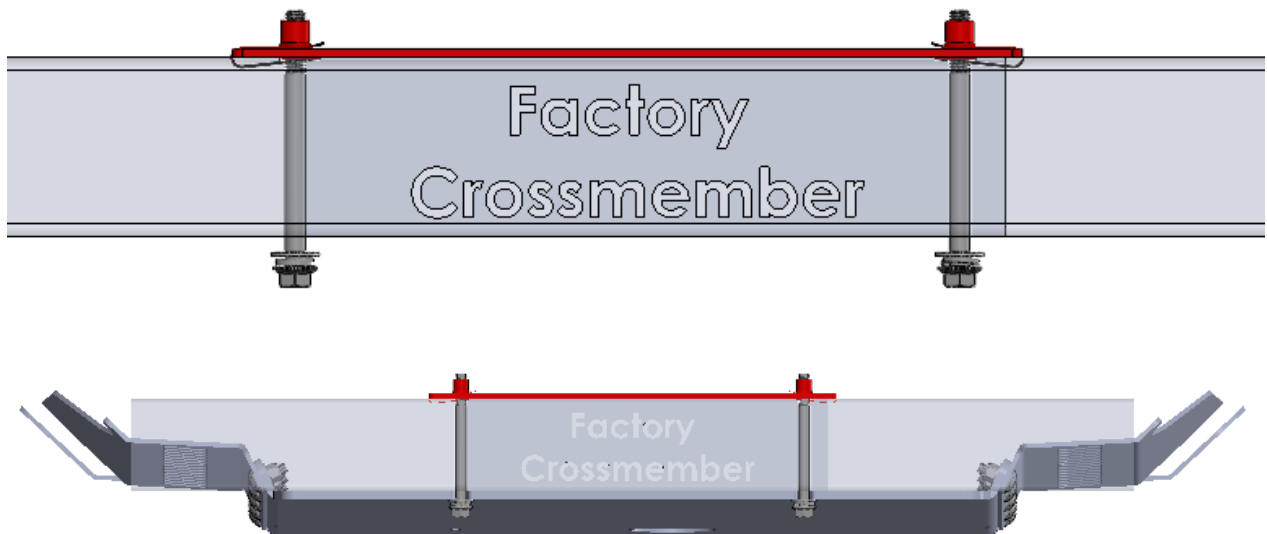


Figure 7: M8 bolt hardware orientation

- 8) Install the speed clip mount plate above the factory crossmember where the front of the transmission skid mounts.



- 9) Begin threading the M8 bolts through the RCI Engine Skid (if applicable), the factory crossmember, and into the Retrofit Mount Plate. Leave about 1/2" of thread visible below the factory crossmember. Reference the figure below.



- 10) Lift the Transmission Skid Plate and cat guard assembly to its final mounting position. Observe the space between the vehicle crossmembers and cat guards. Adjust and repeat if necessary.

11) Reinstall the bolts for the rear of the skid plate and fully tighten all hardware.

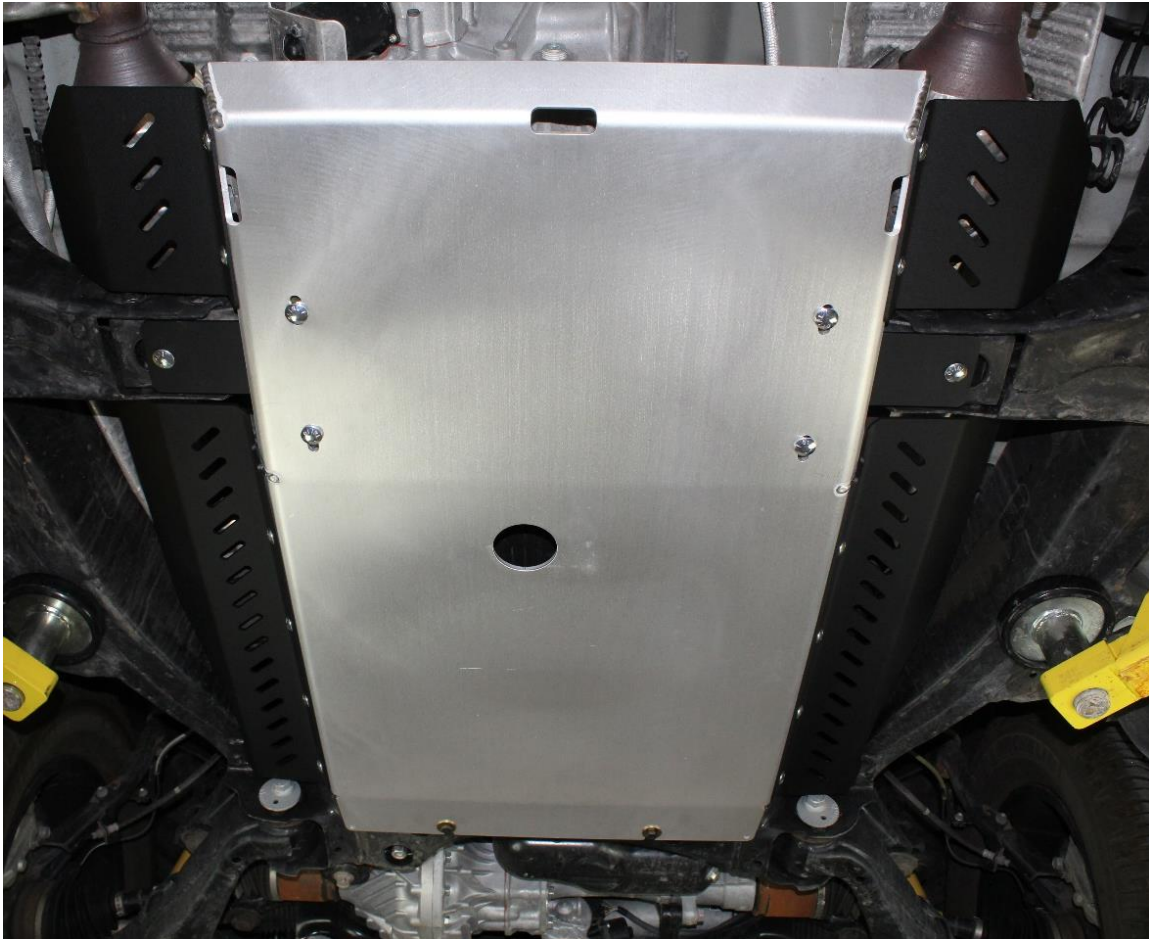


Figure 8: Correct installation of transmission skid with cat guards

Enjoy your new RCI protection!



Share your new install with us on social media!
We love seeing our products out in the wild!

www.rcimetalworks.com

970-797-3089

REV: 1 | 9/29/2022



Disclaimer: The products sold by RCI Metalworks are intended for off –road use only, should not be modified, and are for use only on the vehicle(s) specifically stated. RCI Metalworks makes no warranties express or implied, including of fitness for a particular purpose or merchantability. RCI Metalworks will not be liable for any damages arising out of the use or misuse of its products. It is the customers' responsibility to ensure the products are safely and properly attached to the vehicle, and all products should be installed by trained professionals. We strive to maintain extremely high quality standards; however, all RCI Metalworks products are individually handcrafted, may vary slightly, and may contain minor imperfections. Due to the nature of raw aluminum, the material may have minor scratches and other blemishes caused by the manufacturing process, especially on the back side of product. RCI Metalworks is constantly seeking to improve its products and reserves the right to make changes to any product.

Appendix A:

Cat Guard Installation on Old Style RCI Transmission Skid Plate

- 1) Remove the transmission skid and align the cat guards on the side flanges.

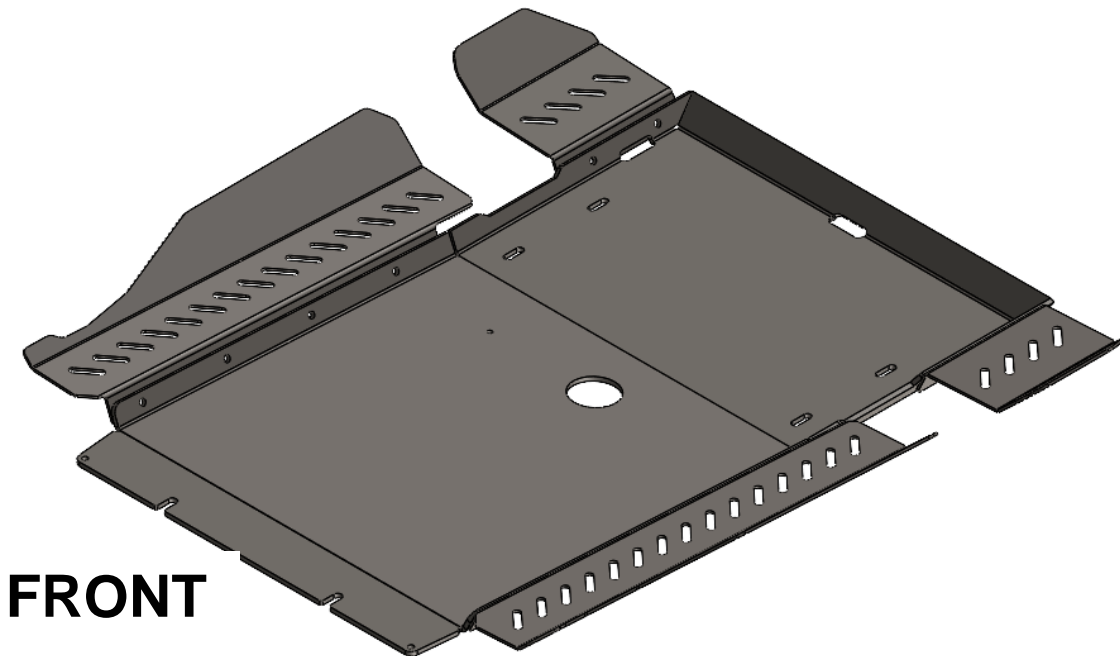


Figure 9: Correct orientation of car guards

- 2) Align the front (larger) car guards to be flush with the front of the side flange. Align the bottom edge of the cat guard where the bend ends on the transmission skid side flange. Reference the figure below.

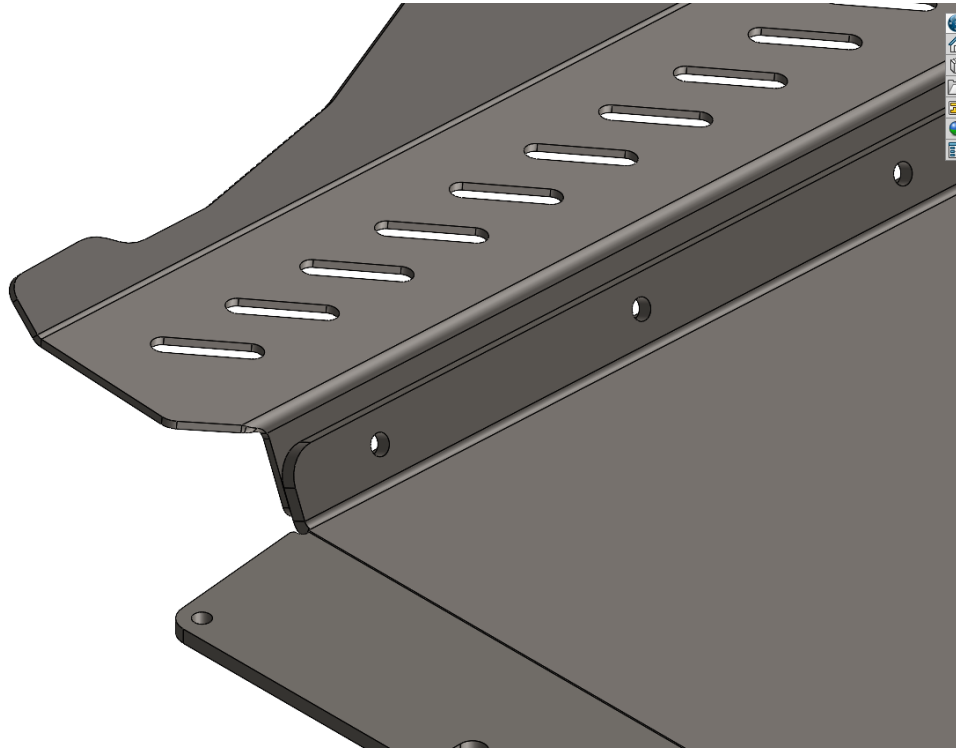


Figure 10: Front cat guard alignment (Top)

Align where
bend ends on
transmission
skid side flange.

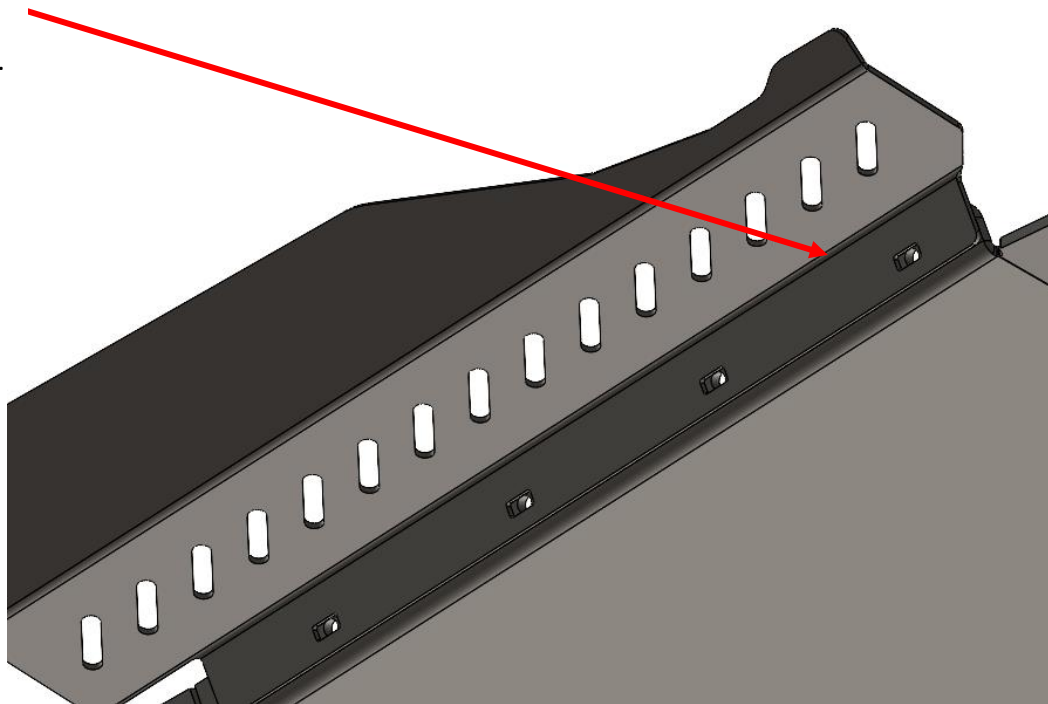


Figure 11: Front cat guard alignment (Bottom)

- 3) Use clamps to hold the cat guards in place. With the CAT Guard properly aligned, mark the center point of each square cutout by using a permanent marker.



- 4) With all the center points marked, remove the cat guard, and confirm that the points are $\frac{1}{2}$ " from the top of the transmission plate flange.
- 5) Repeat the same steps on the opposite side of the skid plate.
- 6) Align the rear (small) cat guards with the outer face of the flange present at the rear of the transmission skid plate. Align the rear of the car guard approximately 1 inch from the rear flange of the transmission skid plate.
- 7) Align the bottom edge of the cat guard where the bend ends on the transmission skid side flange.

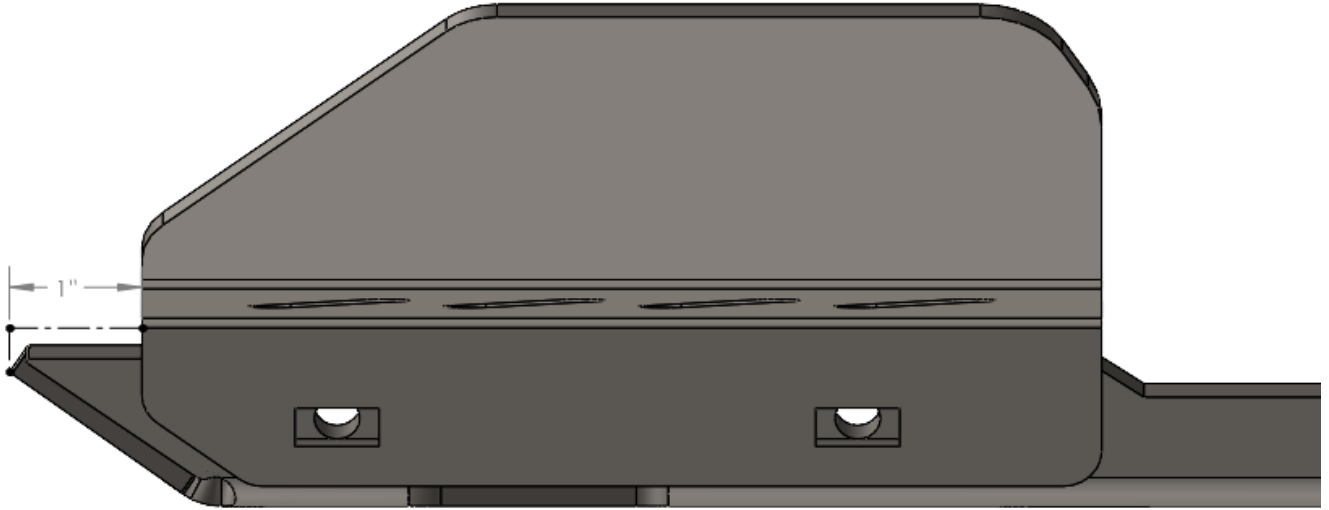


Figure 12: Correct alignment of rear cat guards

Align where
bend ends on
transmission
skid side flange.

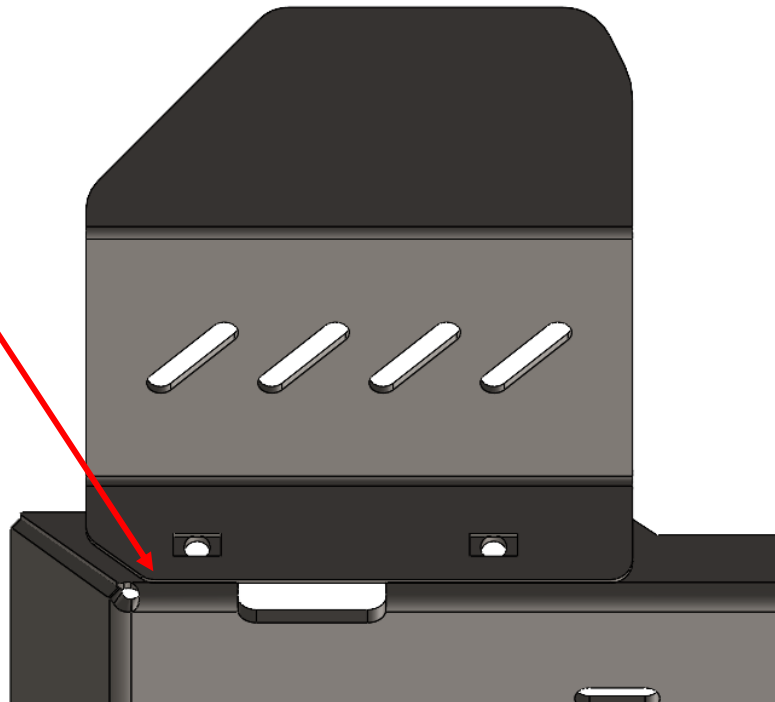


Figure 13: Correct alignment of rear cat guards

- 8) Repeat steps 6-7 on the rear cat guards.
- 9) Use a small drill bit to drill out all 12 holes that have been marked.
- 10) Go back with a 3/8" drill bit to enlarge the holes to the desired diameter.