

RCI Roof Rack Hi Lift Mount Install Guide

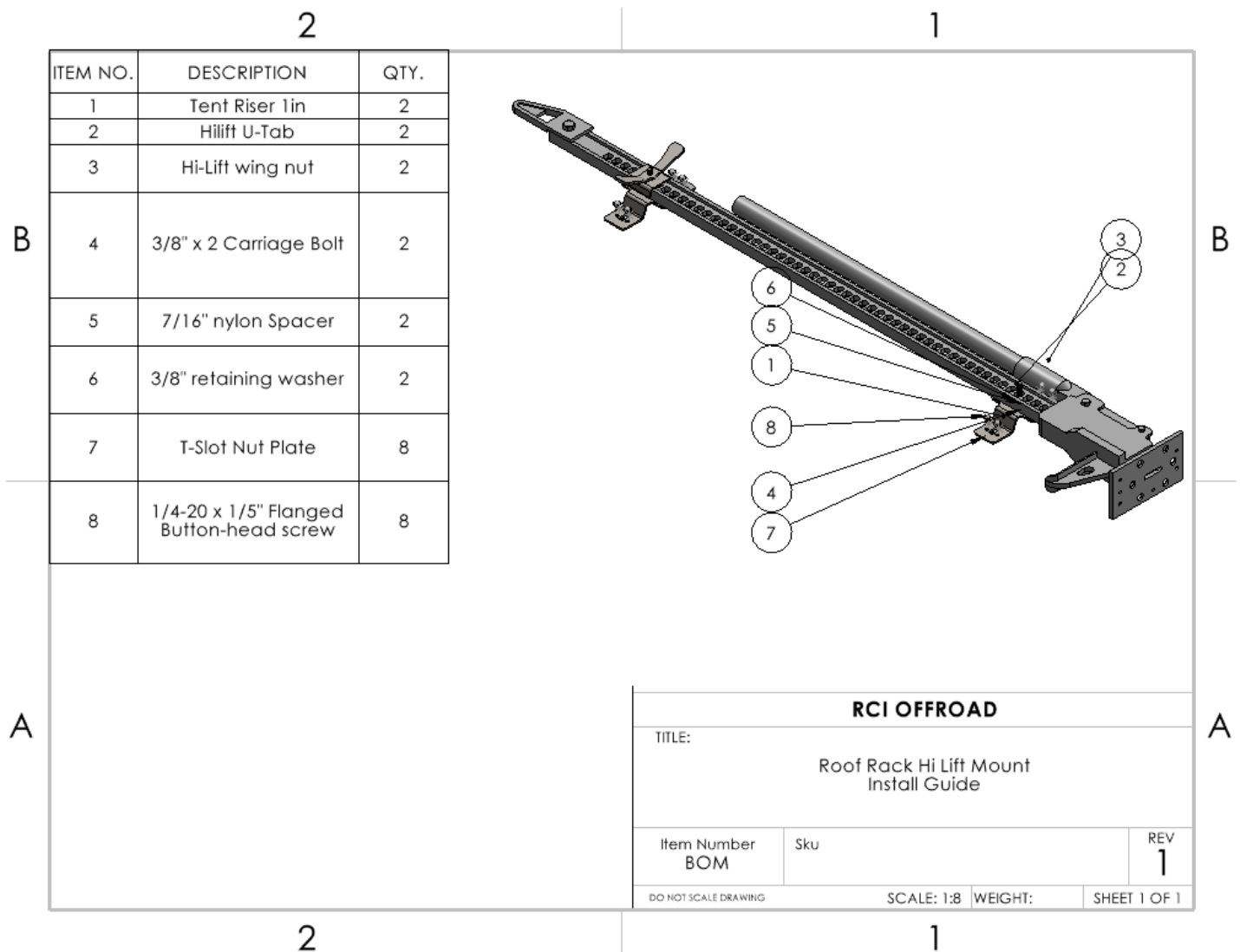


Figure 1: BOM

INSTALLATION STEPS:

****Use hand tools, impact wrenches may cause damage if over torqued.****

- 1) Begin by unpacking and removing all components and hardware. Please verify that all hardware and mounting components are present. Reference your original order invoice and verify all items are accounted for.
- 2) Collect the two risers along with the 3/8" x 2" carriage bolts, 7/16" nylon spacer, and the 3/8" retaining washers.
- 3) Assemble the hardware by inserting the carriage bolt through the center of the riser. Add the 7/16" nylon spacer on to the carriage bolt and secure the assembly with the 3/8" retaining washer as depicted below.

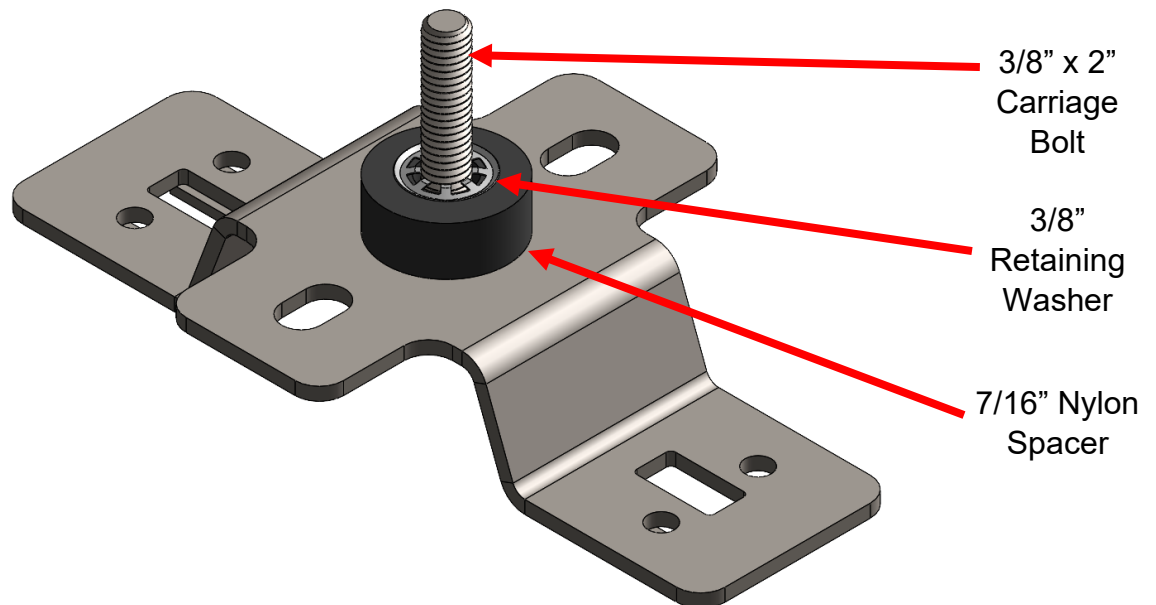


Figure 2: Correct assembly of carriage bolt

- 4) Next, collect the t-slot nut plates and the 1/4 -20 x 1/5" flanged button-head screws.
- 5) Decide which roof rack cross bars to install the mounts to and feed the t-slot nut plates into the extrusion. Roughly align the nut plates to the line up with spacing on the mounts and loosely thread the 1/4-20 screws through the tent riser into the nut plates.

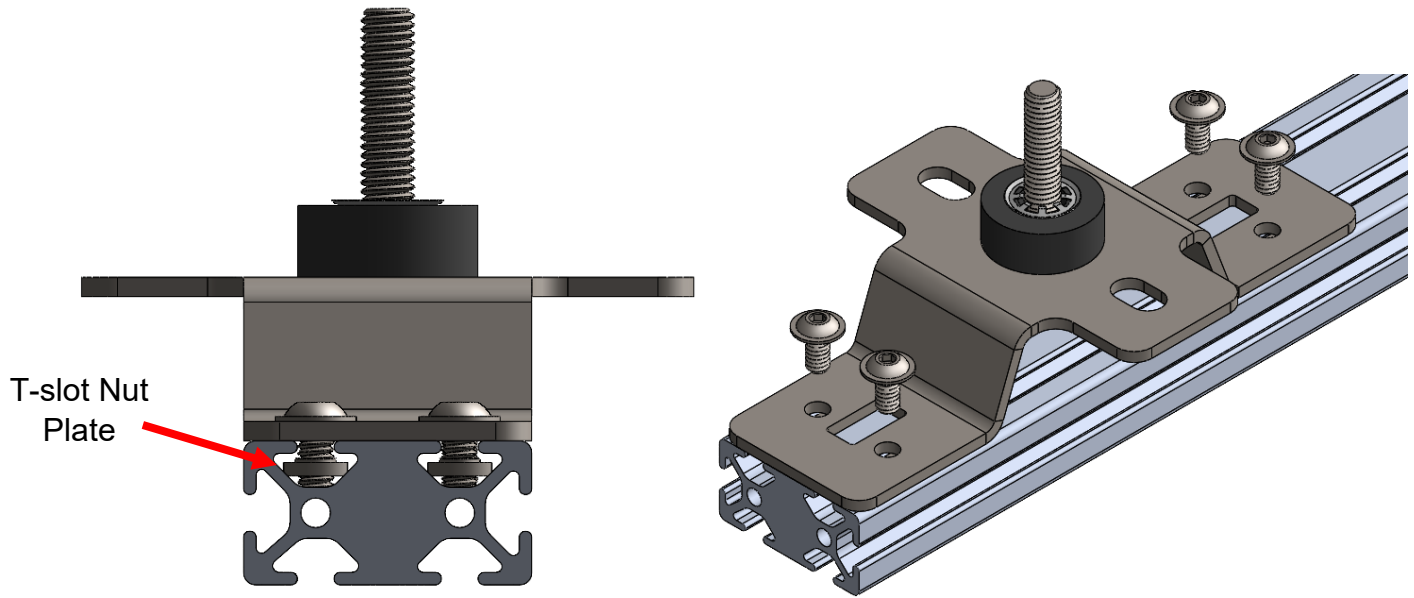


Figure 3: Mounting to extrusion.

- 6) Test fit the jack on the two loosely installed mounts. Fully tighten the $\frac{1}{4}$ -20 screws once the mounts are aligned to preference.
- 7) Install the hi lift on the mounts by fastening the hi lift u-tabs to the jack with the hi lift wing nuts.

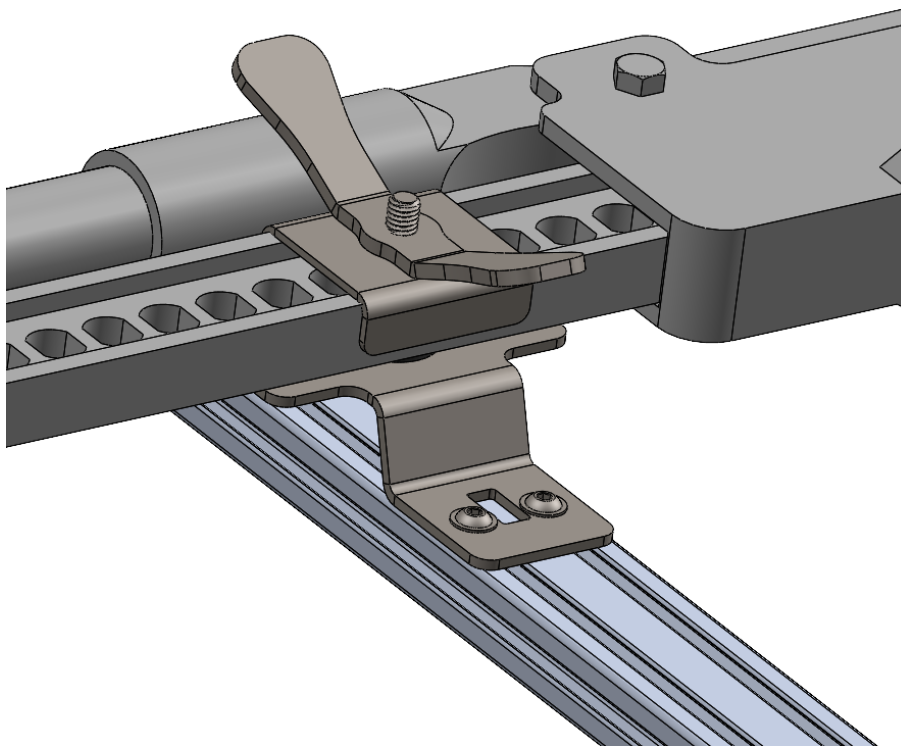
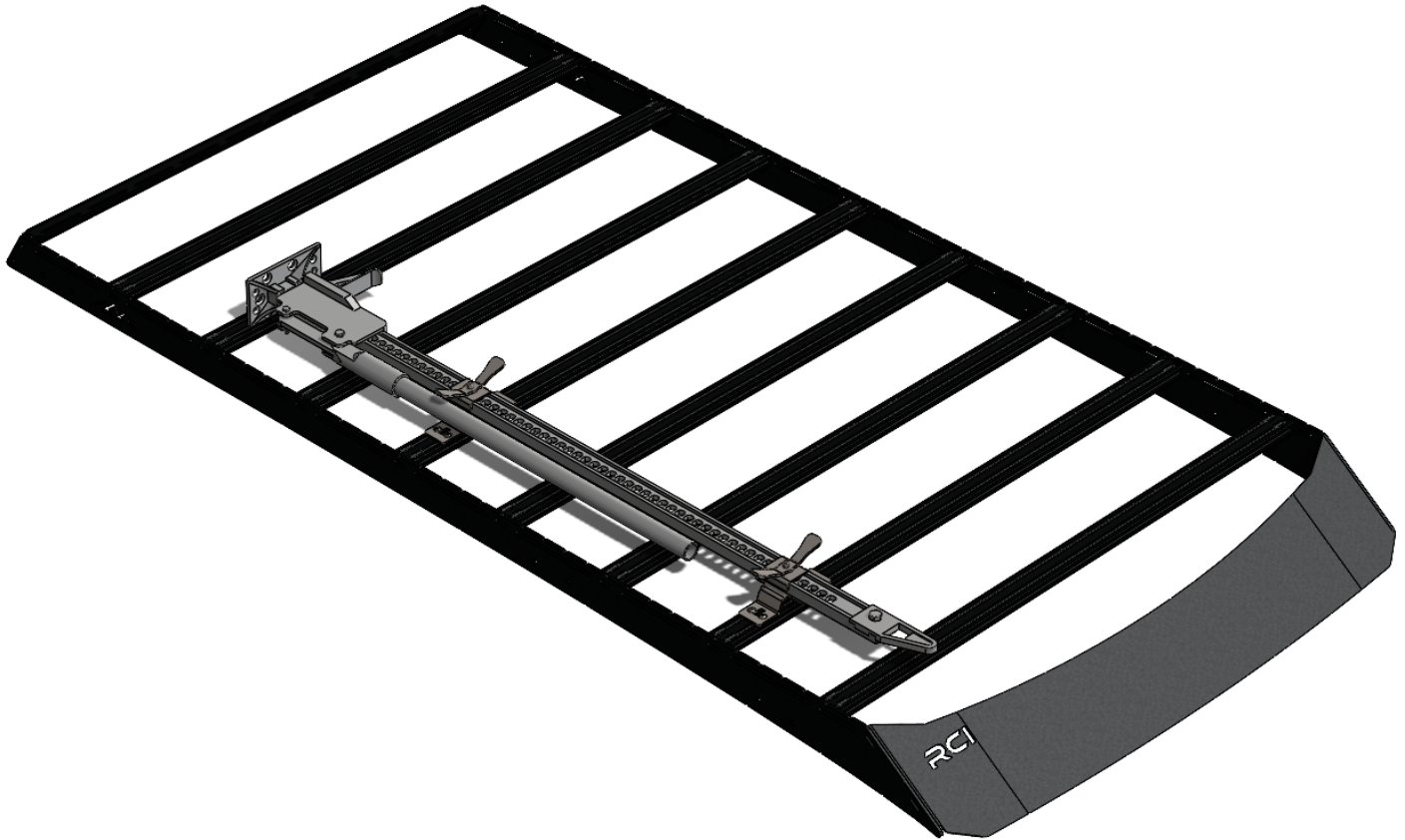


Figure 4: Correct installation of hi-lift mounts.



Enjoy your new RCI accessory!



Share your new install with us on social media!
We love seeing our products out in the wild!

www.rcimetalworks.com

sales@rcioffroad.com

970-797-3089

REV: 1 | 9/29/2022



Disclaimer: The products sold by RCI Metalworks are intended for off-road use only, should not be modified, and are for use only on the vehicle(s) specifically stated. RCI Metalworks makes no warranties express or implied, including of fitness for a particular purpose or merchantability. RCI Metalworks will not be liable for any damages arising out of the use or misuse of its products. It is the customers' responsibility to ensure the products are safely and properly attached to the vehicle, and all products should be installed by trained professionals. We strive to maintain extremely high quality standards; however, all RCI Metalworks products are individually handcrafted, may vary slightly, and may contain minor imperfections. Due to the nature of raw aluminum, the material may have minor scratches and other blemishes caused by the manufacturing process, especially on the back side of product. RCI Metalworks is constantly seeking to improve its products and reserves the right to make changes to any product.