

RCI 21+ Bronco Front Bumper Install Guide

2

1

ITEM NO.	PART NUMBER	DESCRIPTION	QTY.
1	Bronco Winch Bumper		1
2	Center Filler Plate		1
3	Wing Filler Plate		2
4	Parking Sensor Clamp		1
5	.188MS Parking Sensor Cover Plate R1		1
6	Lower Support Bracket	1 Pair: 1 Driver 1 Passenger	1
7	Adhesive Foam Strip - 1.5 Inch	RCI Supplied	4
8	1/4-20 x 0.875 Button Head	Hardware	4
9	1/4-20 Nut With Lock Washer	Hardware	4
10	M8 Speed Clip	Hardware	14
11	M8x25mm button Head	Hardware	14
12	M10 X 35mm Flanged Bolt	Hardware	2
13	3/8 Washer	Hardware	2
14	5/16" Steel Flat Washer	Hardware	8
15	5/16 X 1 Carriage Bolt	Hardware	8
16	5/16 Hex Nut	Hardware	8
17	5/16 Split Lock Washer	Hardware	8

B

A

RCI OFFROAD			
TITLE:			
21+ Bronco Winch Front Bumper			
Item Number	Sku	REV	
BOM		1	
DO NOT SCALE DRAWING		SCALE: 1:10 WEIGHT:	SHEET 1 OF 18

2

1

ITEM NO.	PART NUMBER	DESCRIPTION	QTY.
1	SM-00049	Bronco Non-Winch Bumper	1
2	SM-00062	Bronco Winchless Filler Plate	1
3	SM-00061	Bronco Wing Filler Plate	2
4	SM-00057	Bronco Parking Sensor Clamp	1
5	SM-00058	Bronco Parking Sensor Cover Plate	1
6	SM-00059	Bronco Lower Support Bracket - DVR	1
7	SM-00061	Bronco Lower Support Bracket - Pass	1
8	HW-00018	Adhesive Foam Strip 1.5in Length	4
9	HK-00070	21+ Bronco Front Bumper Hardware Kit	1

B

A

RCI OFFROAD

TITLE:

21+ Bronco Winchless Front Bumper

Item Number
BOM

SKU

REV
1

DO NOT SCALE DRAWING

SCALE: 1:10WEIGHT:

SHEET 1 OF 19

2

1

INSTALLATION STEPS:

****Use hand tools, impact wrenches may cause damage if over torqued.****

- 1) Begin by unpacking and removing all components and hardware. Please verify that all hardware and mounting components are present. Reference your original order invoice and verify all items are accounted for.
- 2) Remove the factory bumper.
 - a. Remove the plastic trim pieces covering surrounding the tow points.
 - i. On Capable bumpers, the tow points take the shape of D-ring shackles.
 1. Remove the plastic trim by gripping the inner (closest to ACC sensor) edge of the trim and pull forward(towards yourself if facing the front of the truck) and out(towards the tire).
 2. When removing the trim pieces, take care not to over-pull and damage the parking sensor wiring.



- ii. On MOD bumpers, the tow points take the shape of shackle mounts.
 1. Remove the 8 clips securing the plastic trim to the bumper. Then, remove the plastic trim by gripping the inner (closest to ACC sensor) edge of the trim and pull forward(towards yourself if facing the front of the truck) and out(towards the tire).



- b. Disconnect all electrical component wiring from in front of the front driver wheel well.

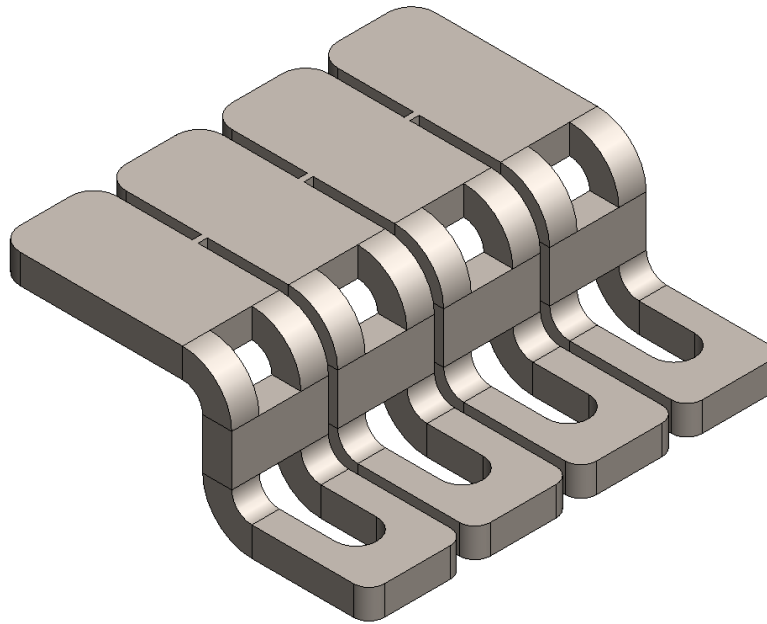


- c. Remove the six bolts securing the bumper to the frame of the vehicle.
d. Remove the bumper by pulling the bumper forward and upwards slightly.

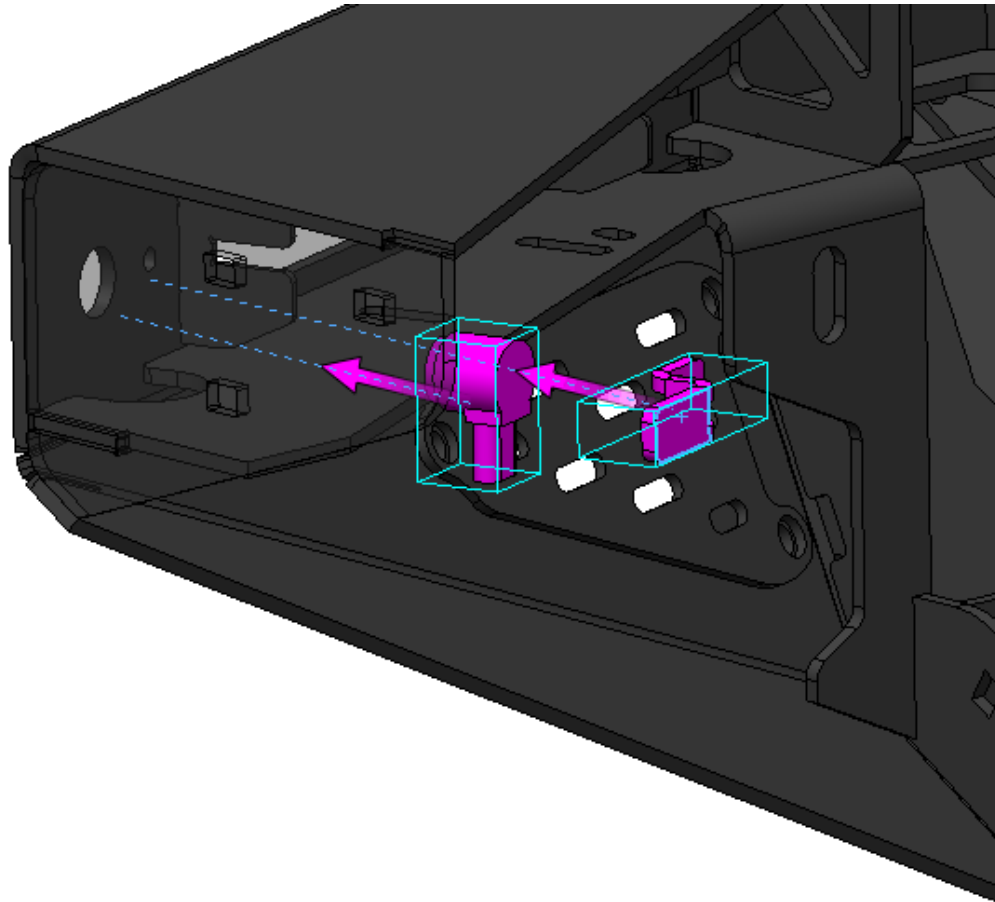
- 3) Prep the vehicle and RCI bumper for installation.
 - a. Install two of the six bolts removed in step 2c backwards in the outermost bumper mounts so that the threads of the bolts are exposed at the front of the vehicle.



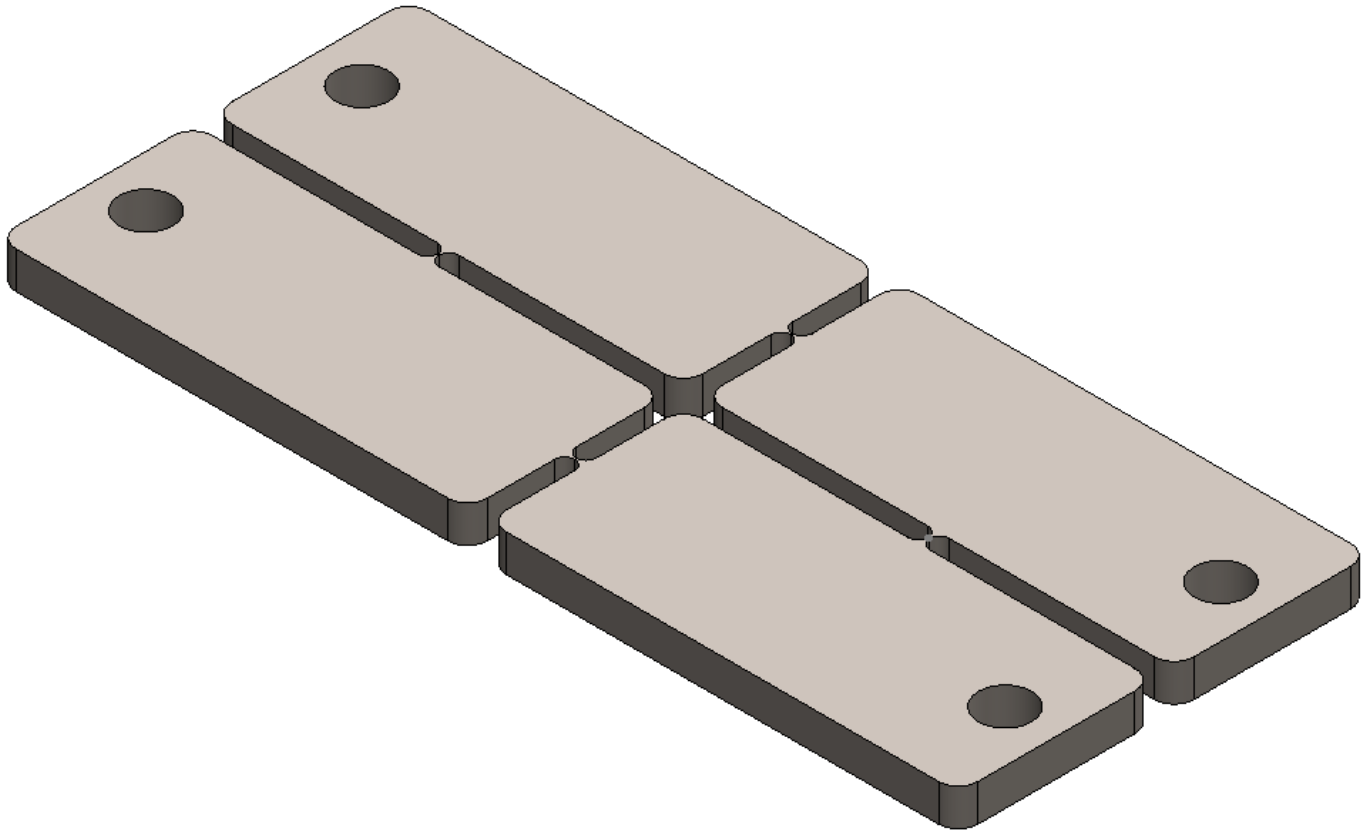
- b. If installing a winch in the RCI Bronco bumper, do so now. Install the fairlead as well.
 - c. If installing any lights within the RCI Bronco bumper, do so now.
 - i. Both variants of the RCI Bronco front bumpers are designed to accept either two Diode Dynamics SSC2 LED pods or a single Diode Dynamics SS 6" light bar in each bumper wing.
 - ii. The Winch-less Kingston bumper is also designed to accept a single Diode Dynamics SS 30" light bar in the center section of the bumper in addition to the light options in the wings of the bumper.
 - d. If the vehicle is equipped with adaptive cruise control, relocate the sensor using an aftermarket ACC relocation bracket.
 - i. RCI's ACC relocation bracket is in development but is not available for purchase at this time. DV8 Off-Road and ICON Vehicle Dynamics both offer relocation brackets.
 - e. If the vehicle is equipped with parking sensors, remove them from the factory bumper and install them in the RCI Bronco bumper.
 - i. Insert the parking sensors in the matching holes in the bumper "wings" and secure with the included backing brackets, 1/4" bolts, and nuts. Use the adhesive foam strips between the back of the sensor and the bracket.
 1. Parking sensor brackets will arrive as shown below. Break tabs to use them individually.



2. Install



- ii. If the vehicle is not equipped with parking sensors use the included cover plates, 1/4" bolts, and nuts to cover the holes in the bumper "wings".
 - 1. Cover plates will arrive as shown below. Break tabs to install them individually.

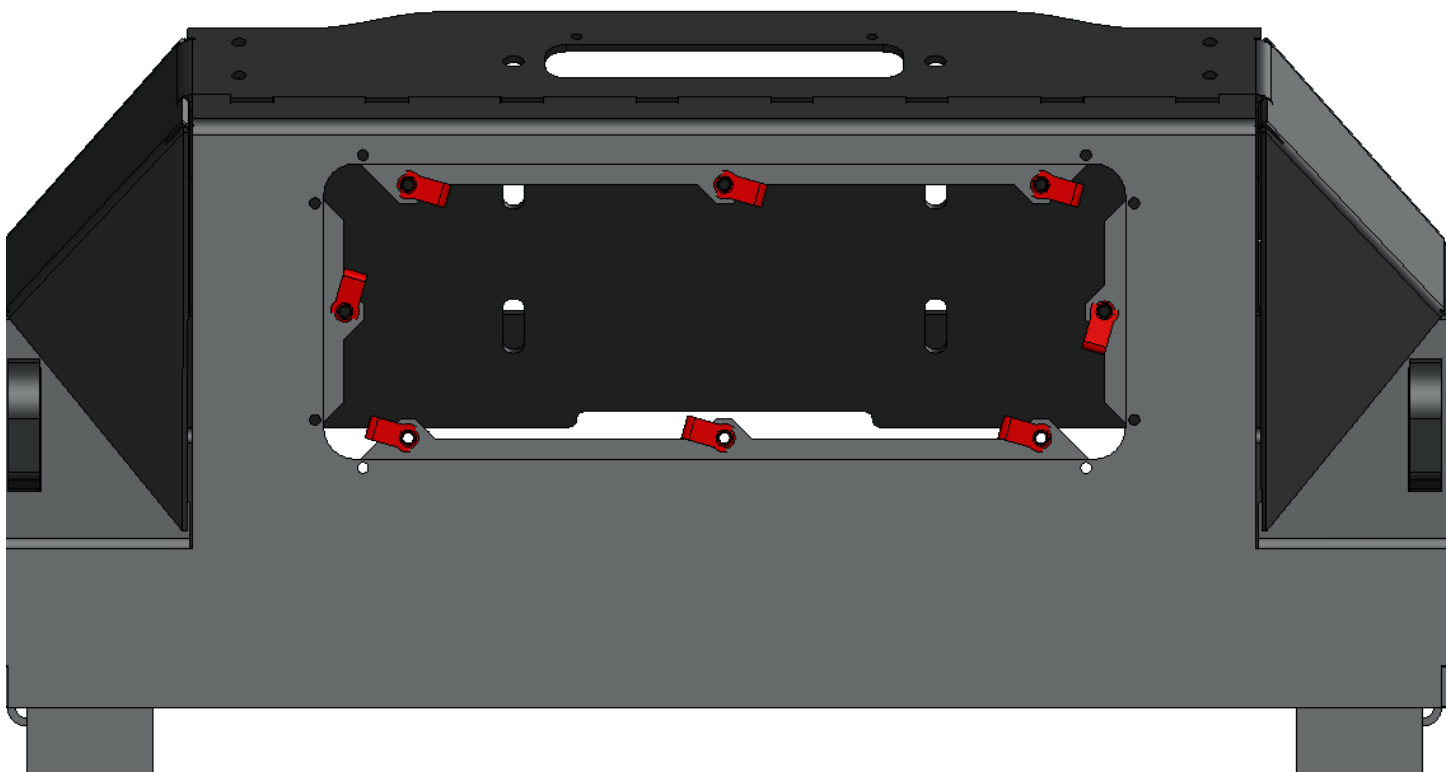
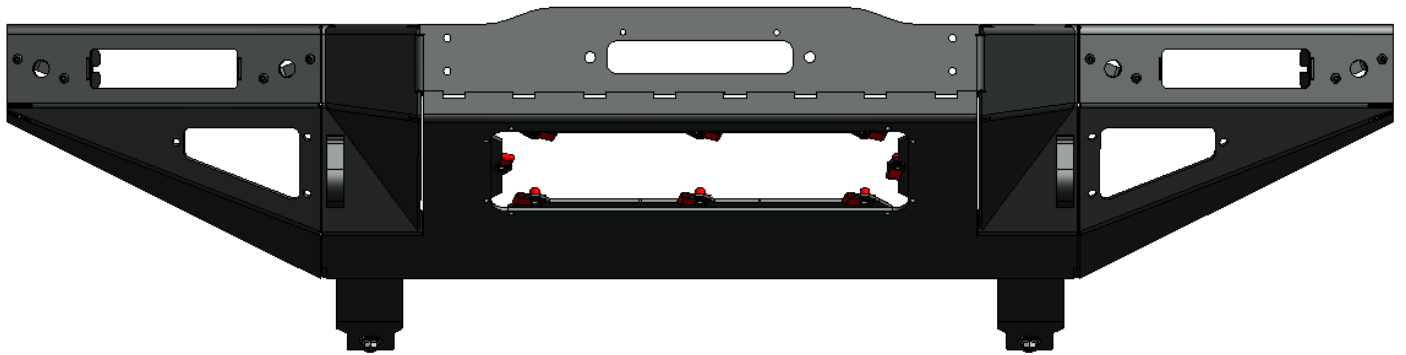


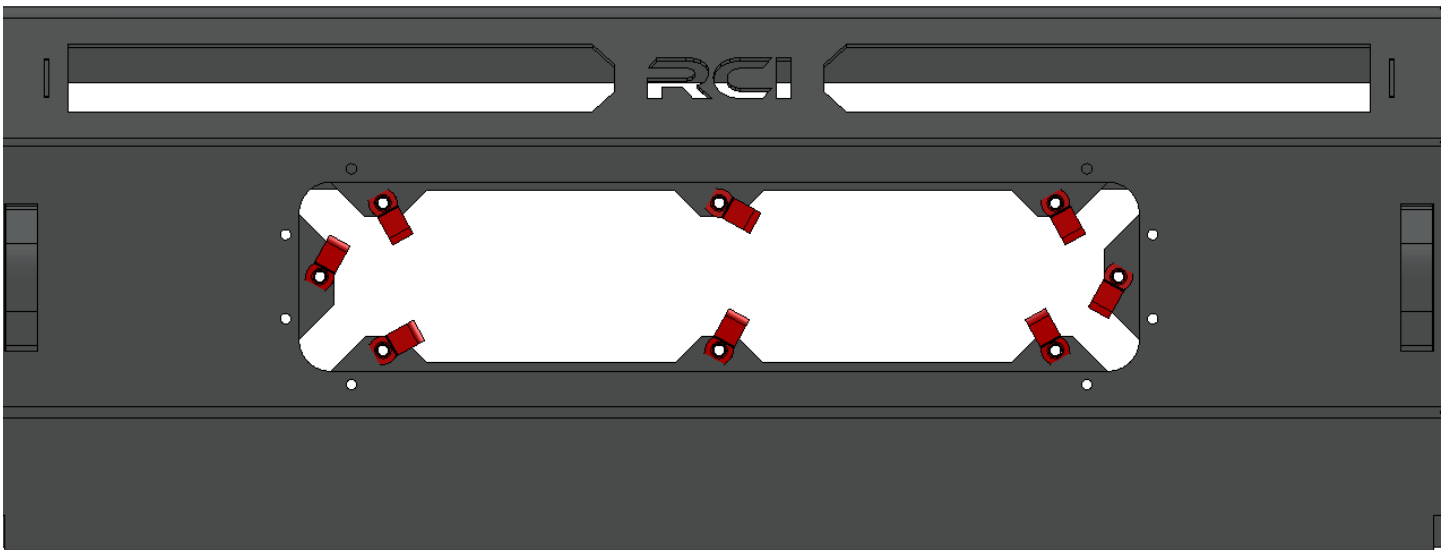
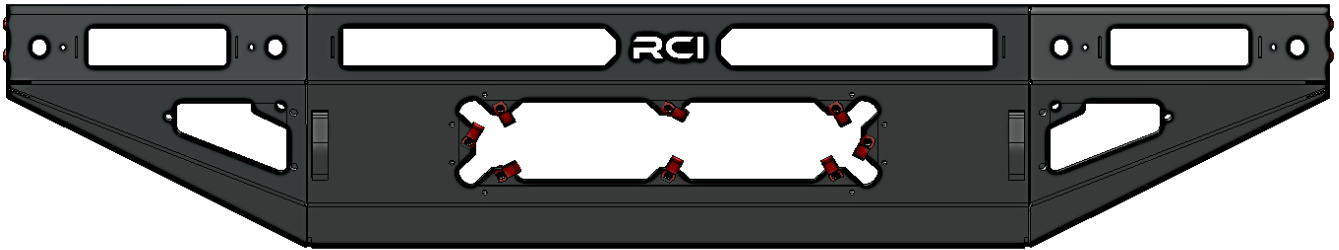
- f. Install the lower bumper brackets.
 - i. If installing with an RCI Bronco engine skid plate, remove the front two bolts securing the front of the primary skid plate and loosen the rest of the bolts securing the engine and secondary skid plate subassembly to the vehicle.
 - ii. Loosely secure the RCI bumper lower support brackets to the vehicle using the included M10 bolts and 3/8" washers.
 - iii. Tighten all hardware.
- 4) Install the RCI Bronco bumper.
- a. Align the reversed mounting bolts from step 3a with the outer mounting slots of the RCI Bronco bumper and push the bumper towards the rear of the vehicle until the mounting faces of the bumper and vehicle frame are seated against each other.
 - b. Begin installing the remaining four bolts from step 2c in the four inner mounting points. Once loosely secured, remove the reversed hardware from step 3a and install them in the original, thread-rearward orientation.



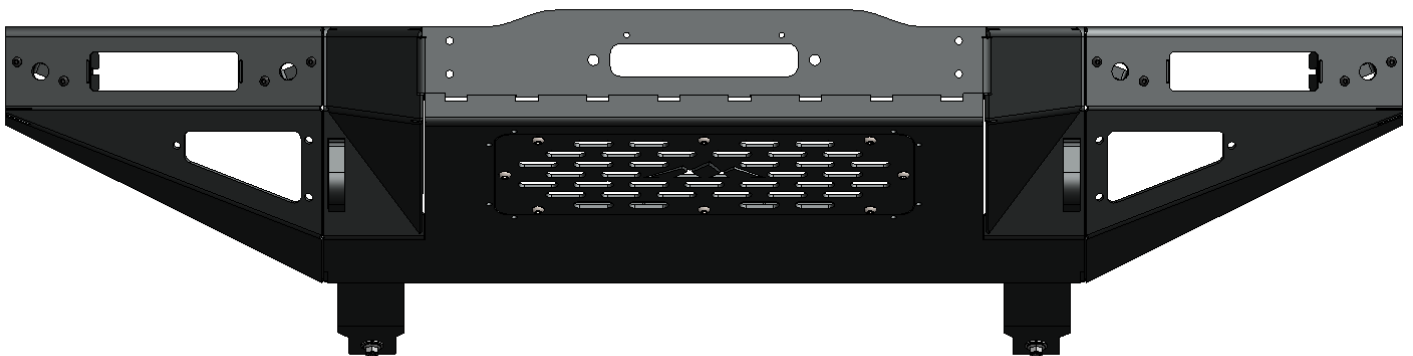
- c. With the mounting hardware still loose, adjust the height of the bumper to achieve an even gap of approximately 1/4" between the top face of the bumper and the lower body line of the grille.
 - i. The outer edges of the lower body line below the headlights taper up slightly and will not be even with the center section. This is normal.
 - ii. Use of a friend or a jack placed below the bumper to support the weight can be helpful in completing this step successfully.
 - d. Tighten the 6 bolts to secure the bumper to the vehicle frame.
 - e. Align the RCI Bronco bumper Lower support brackets with the slots in the bumper vertical gusset and secure each side with the included 5/16" carriage bolts, washers, and nuts.
 - f. Tighten all installed hardware.
- 5) Install the RCI Bronco Bumper fillet plates.
- a. Install one of the m8 speed clips to each of the eight mounting locations found on the center of the bumper.

RCI OFFROAD 

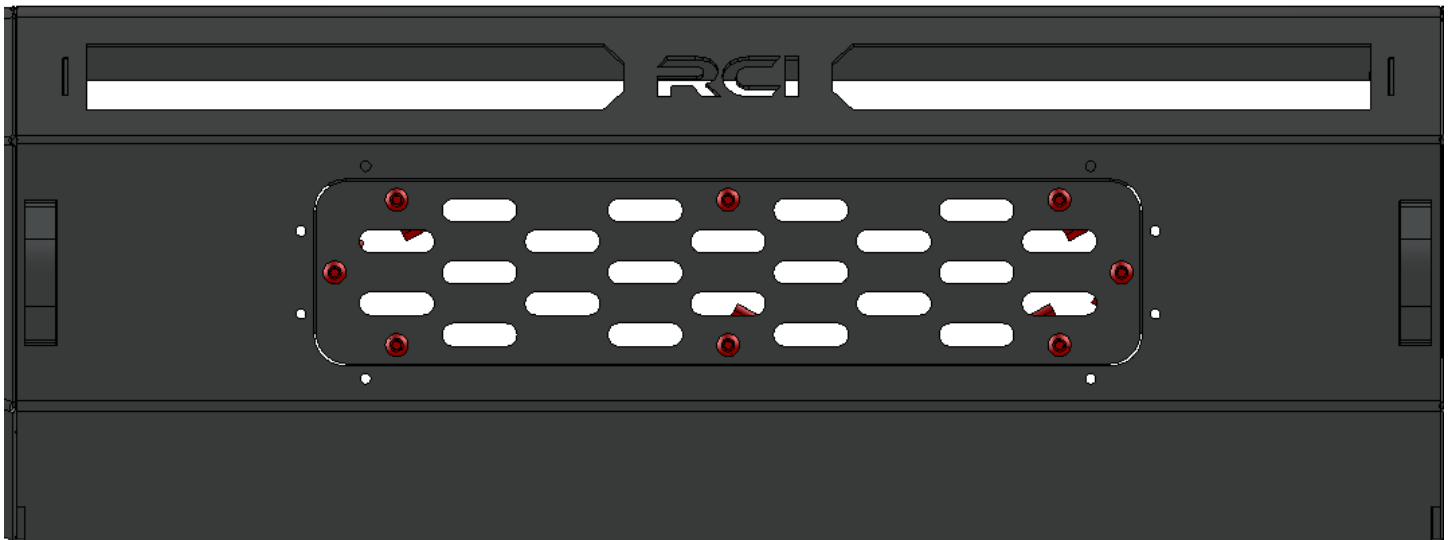
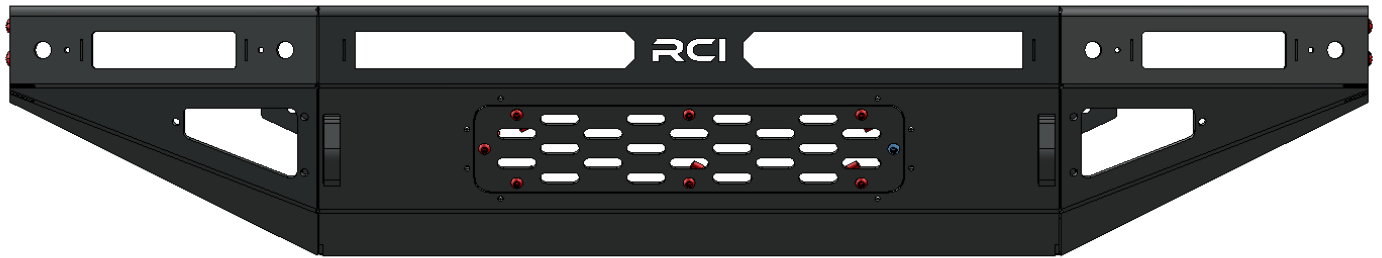
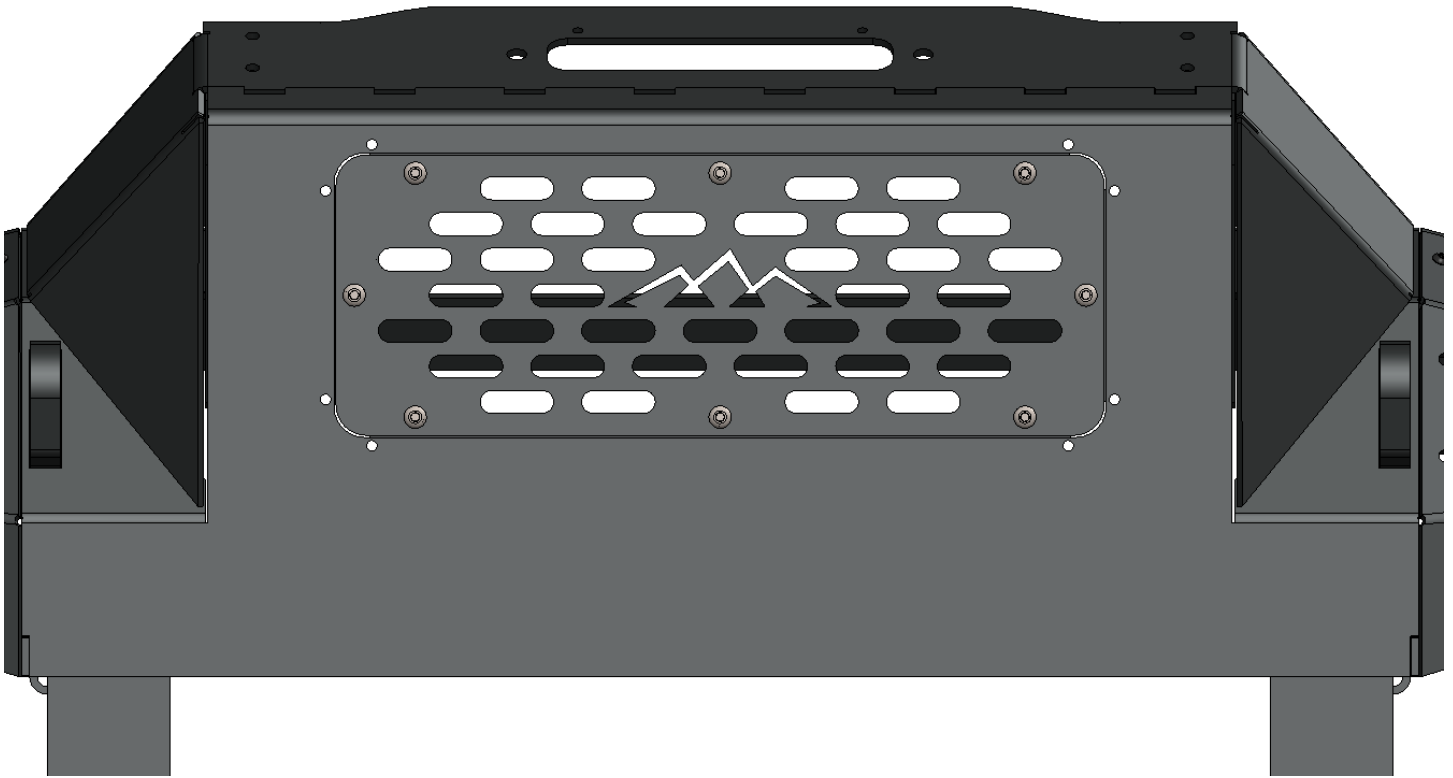




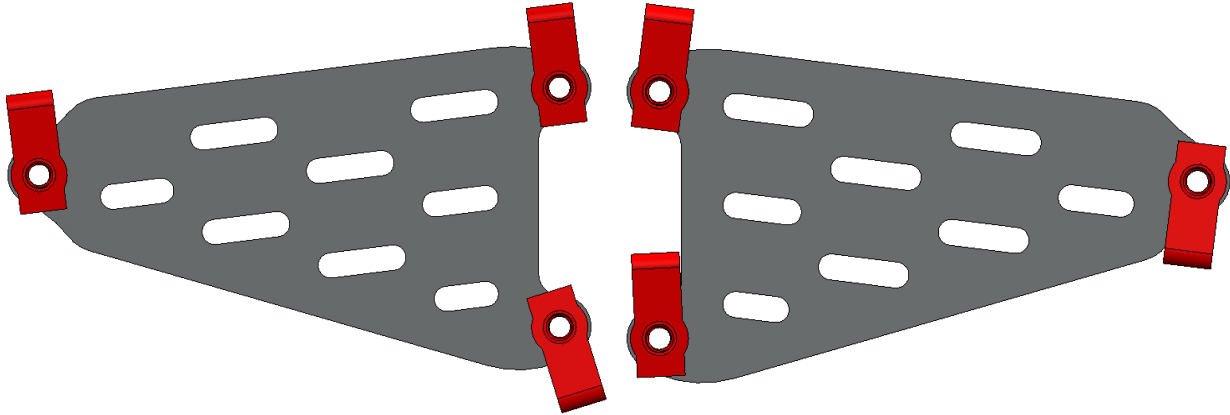
- b. Use 8 of the included m8 button head bolts to secure the center filler panel to the center section of the RCI Bronco bumper.



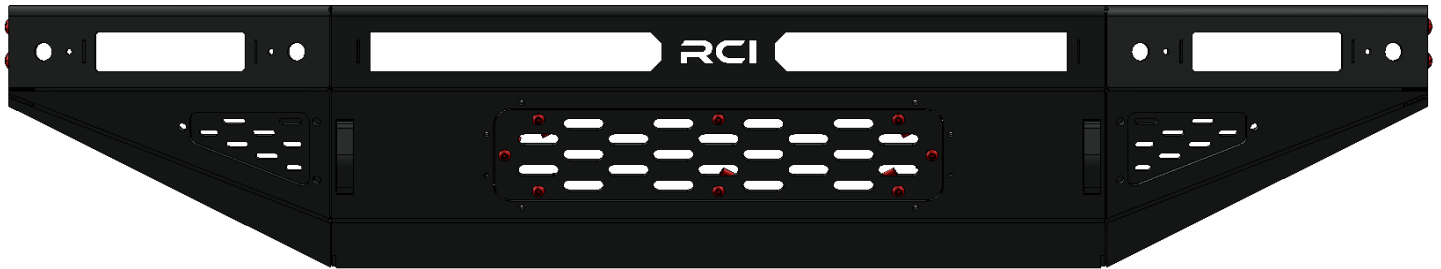
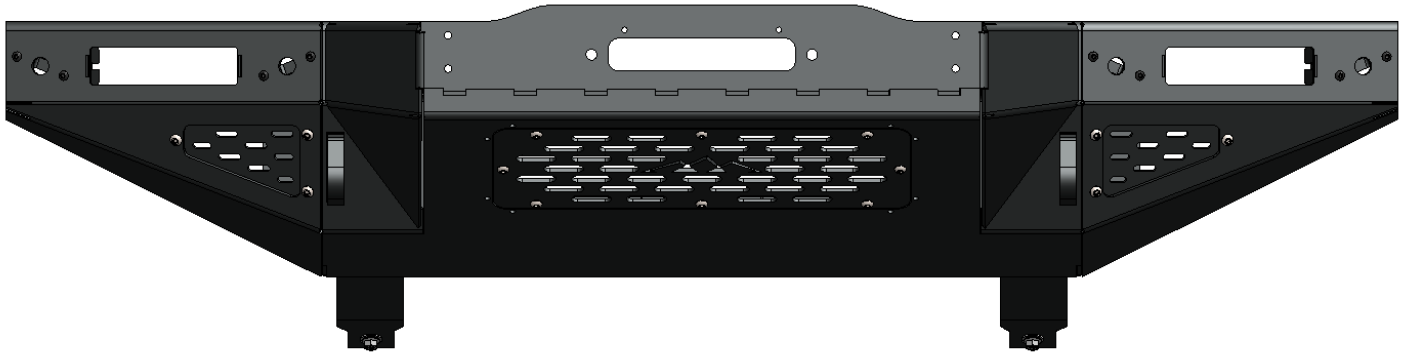
RCI OFFROAD 

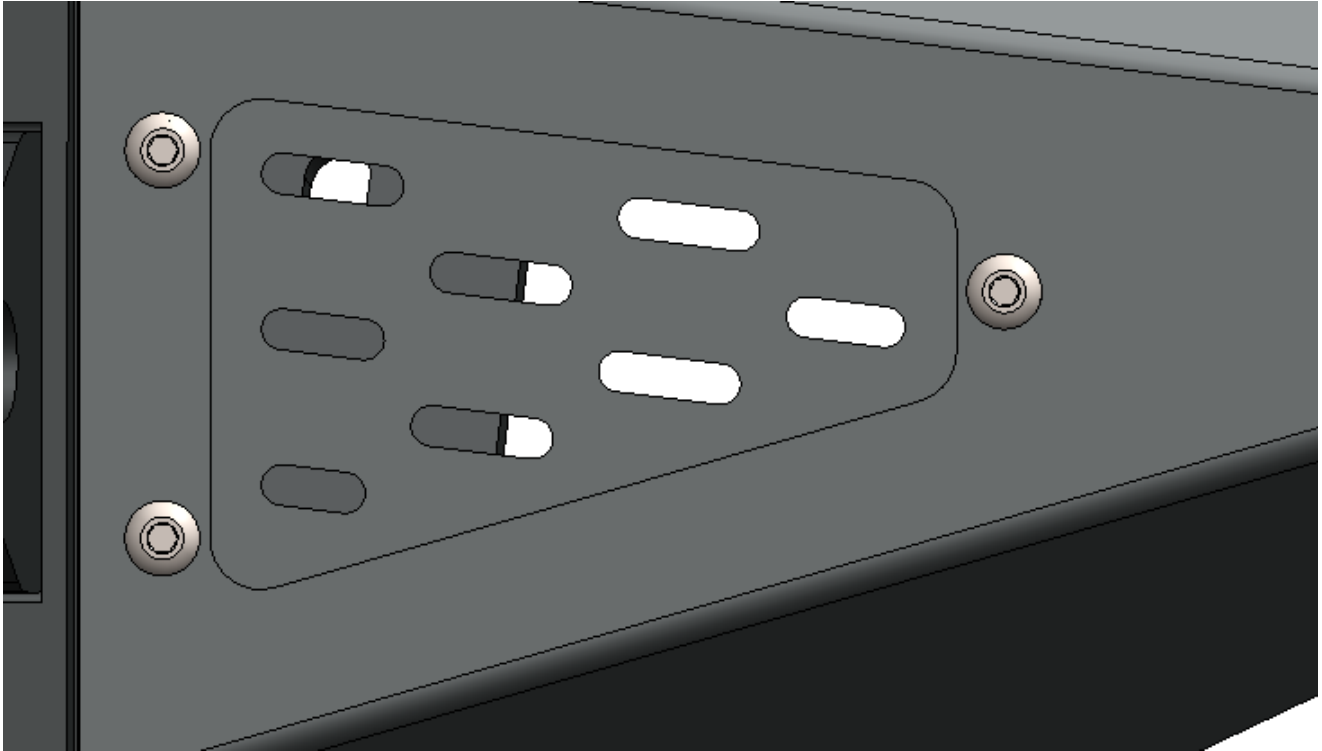


- c. Attach the remaining six m8 speed clips to the two included wing filler panels.



- d. Install the wing filler panels using the remaining six m8 button head bolts.





6) Side flange finishing.

- a. The RCI Bronco Bumper can be equipped with optional fender-width winglets to match either the Sasquatch, Non-Sasquatch, or Raptor width fenders.
 - i. Using the included 5/16" black carriage bolts, washers, and locknuts, secure the winglet to the side flanges of the RCI Bronco Bumper. The bolt head should be installed on the inside of the bumper with the threads oriented out towards the sides of the vehicle for quick access.





- b. The RCI Bronco Bumper can be run without the optional fender-width winglets.
 - i. To finish the RCI Bronco bumper side flange, install the included 5/16" black carriage bolts, washers, and locknuts with the bolt head on the outside of the bumper and the threads oriented in towards the center of the vehicle for a clean look.





Enjoy your new RCI protection!



Share your new install with us on social media!

We love seeing our products out in the wild!

www.rcimetalworks.com

sales@rcioffroad.com

970-797-3089

REV: 1 | 9/29/2022



Disclaimer: The products sold by RCI Metalworks are intended for off-road use only, should not be modified, and are for use only on the vehicle(s) specifically stated. RCI Metalworks makes no warranties express or implied, including of fitness for a particular purpose or merchantability. RCI Metalworks will not be liable for any damages arising out of the use or misuse of its products. It is the customers' responsibility to ensure the products are safely and properly attached to the vehicle, and all products should be installed by trained professionals. We strive to maintain extremely high quality standards; however, all RCI Metalworks products are individually handcrafted, may vary slightly, and may contain minor imperfections. Due to the nature of raw aluminum, the material may have minor scratches and other blemishes caused by the manufacturing process, especially on the back side of product. RCI Metalworks is constantly seeking to improve its products and reserves the right to make changes to any product.