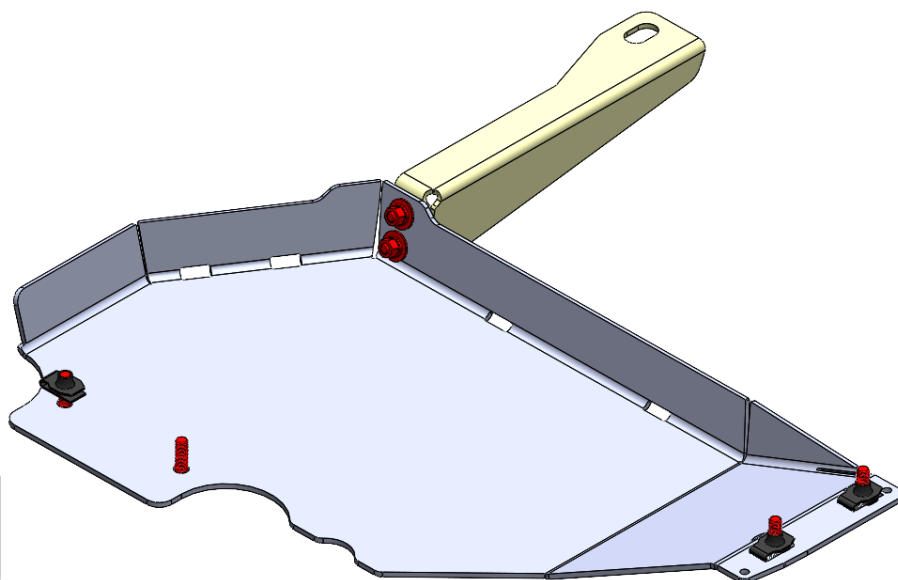


RCI FORD BRONCO TRANSFER CASE SKID PLATE INSTALLATION GUIDE

****This install guide is applicable to our Ford Bronco Transfer Case Skid Plate ONLY****



TOOLS REQUIRED:

Description
15mm and 9/16" Socket Wrench and Socket Set
Box-End Wrenches

INCLUDED HARDWARE:

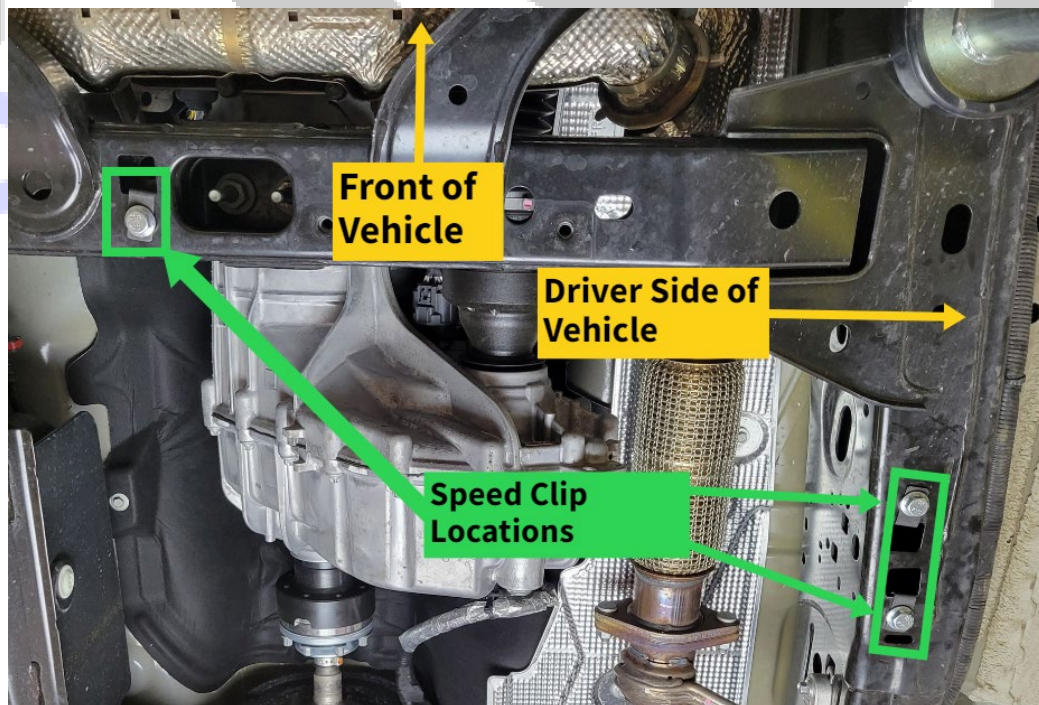
Item	Description	QTY
H1.	3/8" Washer	6 ea.
H2.	M10 X 35mm Flanged Bolt	4 ea.
H3.	M10 Speed Clip	3 ea.
H4.	3/8" Lock Washer	2 ea.
H5.	3/8" x 1" Carriage Bolt	2 ea.
H6.	3/8" Nut	2 ea.

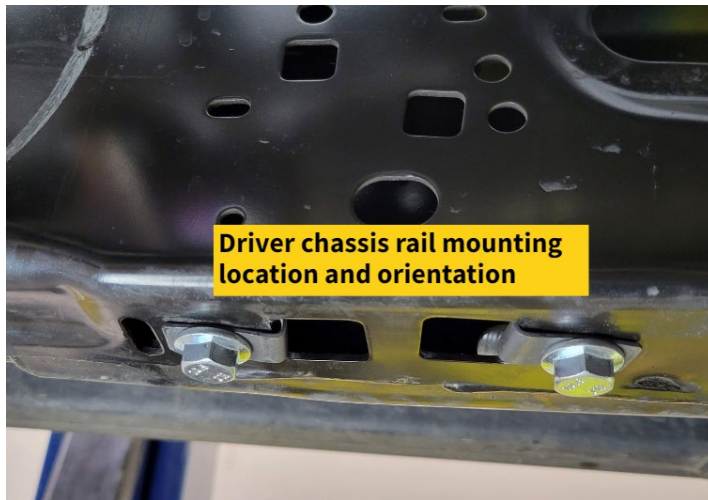
INCLUDED COMPONENTS:

Item	Description	QTY
C1.	Bronco Transfer Case Skid Plate	1 ea.
C2.	Bronco Transfer Case Mounting Bracket	1 ea.

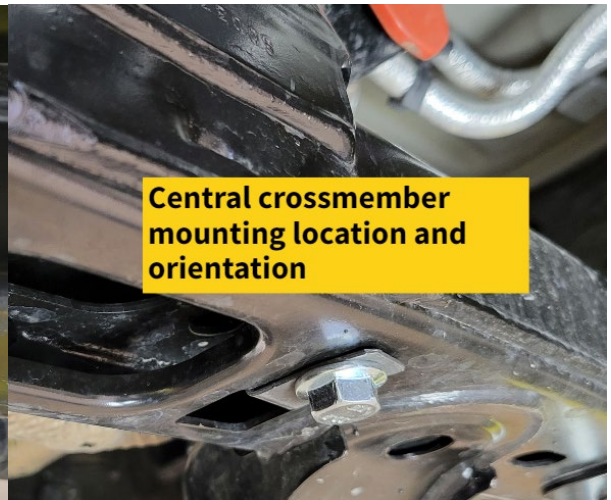
INSTALLATION STEPS:

- 1) Begin by unpacking and removing all components and hardware. Please verify that all hardware, components, and mounting components are present. Please reference your original order invoice and verify all items are accounted for.
 - a. Please note that our Bronco Transfer Case skid plate mounts closer to the vehicle and “above” our Bronco Transmission skid plate. If installing both, please install the Transfer Case skid plate before installing the Transmission skid plate.
 - b. If installing on a Bronco with the optional bash guards package, uninstall the factory transfer case bash guard before installing our Transfer Case skid plate.
- 2) Install M10 Speed Clips (2) in the driver chassis rail and the central crossmember. Refer to the images below for locations and orientation.
 - a. If your Bronco’s central crossmember has an additional slot as shown in the image, insert a third optional M10 Speed Clip as shown.
 - i. The remainder of this install guide will assume installation of the optional Speed Clip in the central crossmember. However, the Bronco Transfer Case Skid Plate has been tested in both configurations and has exceeded our rigorous load testing requirements.





Driver chassis rail mounting location and orientation

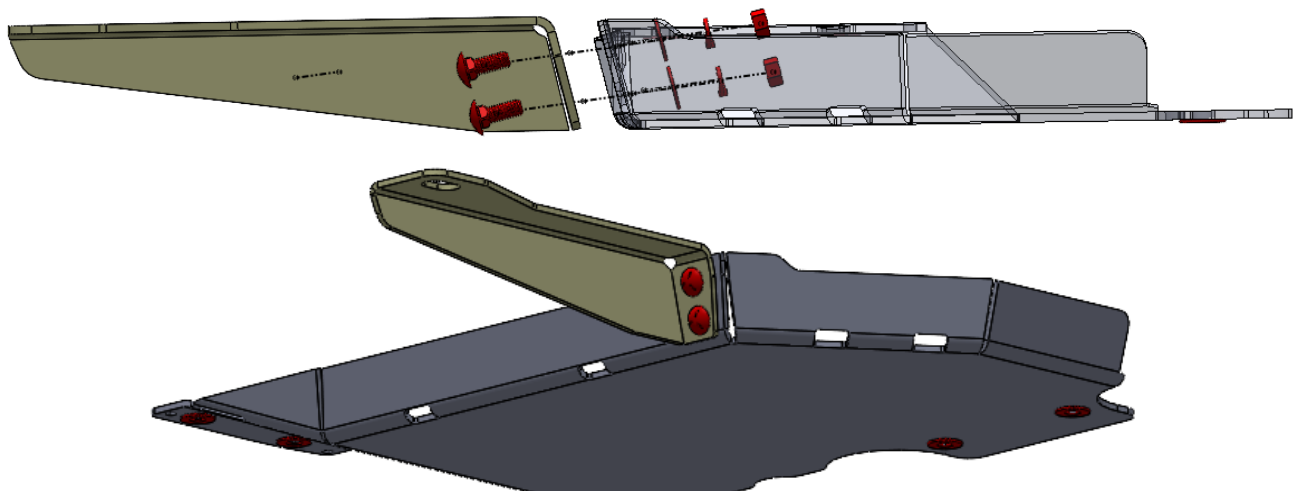


Central crossmember mounting location and orientation

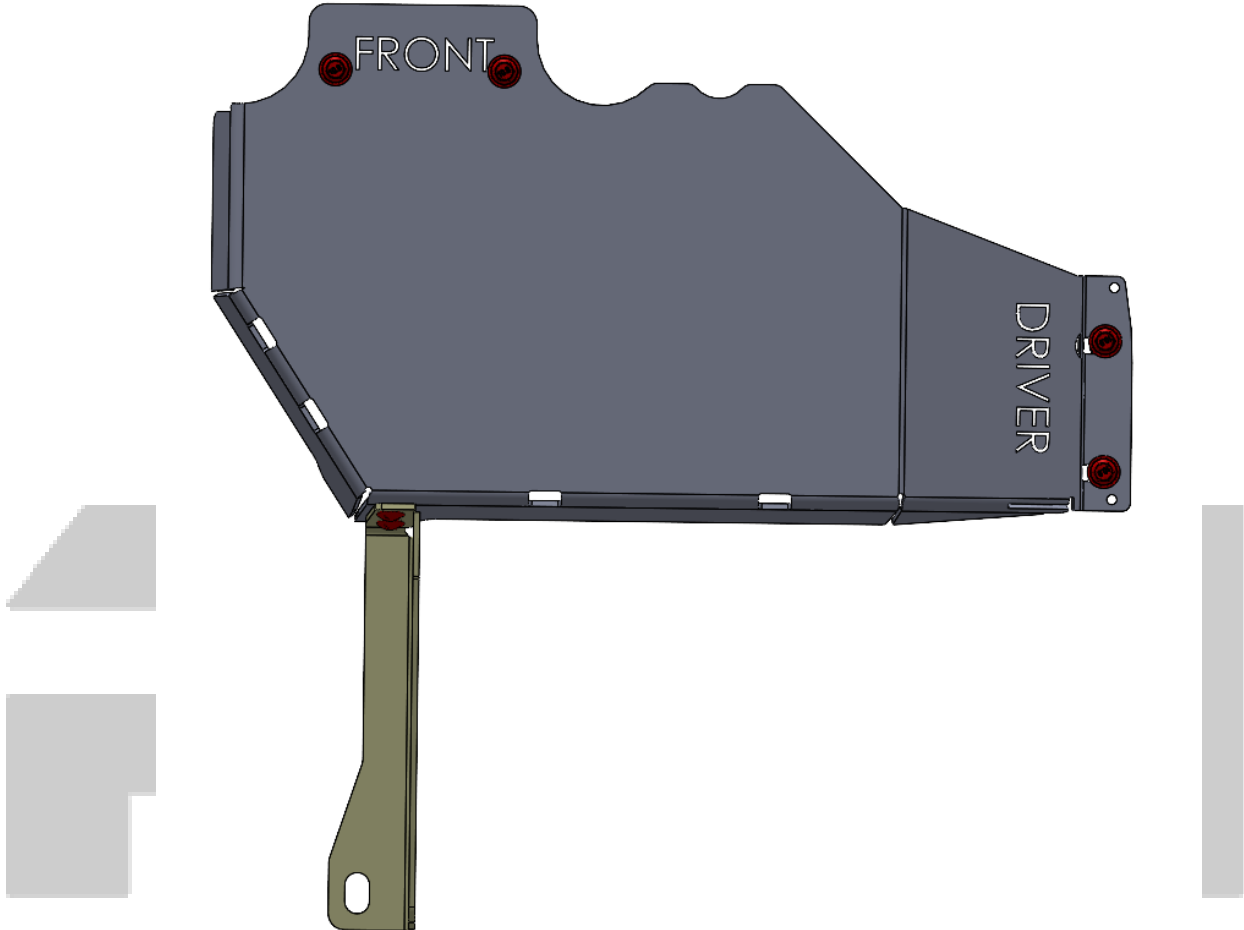
- 3) Install a set of 3/8" washers(2) and M10x35mm bolts(2) in the speed clip locations on the driver side chassis rail. Leave approximately 1/2" of exposed thread between the bottom of the chassis rail and the washer.



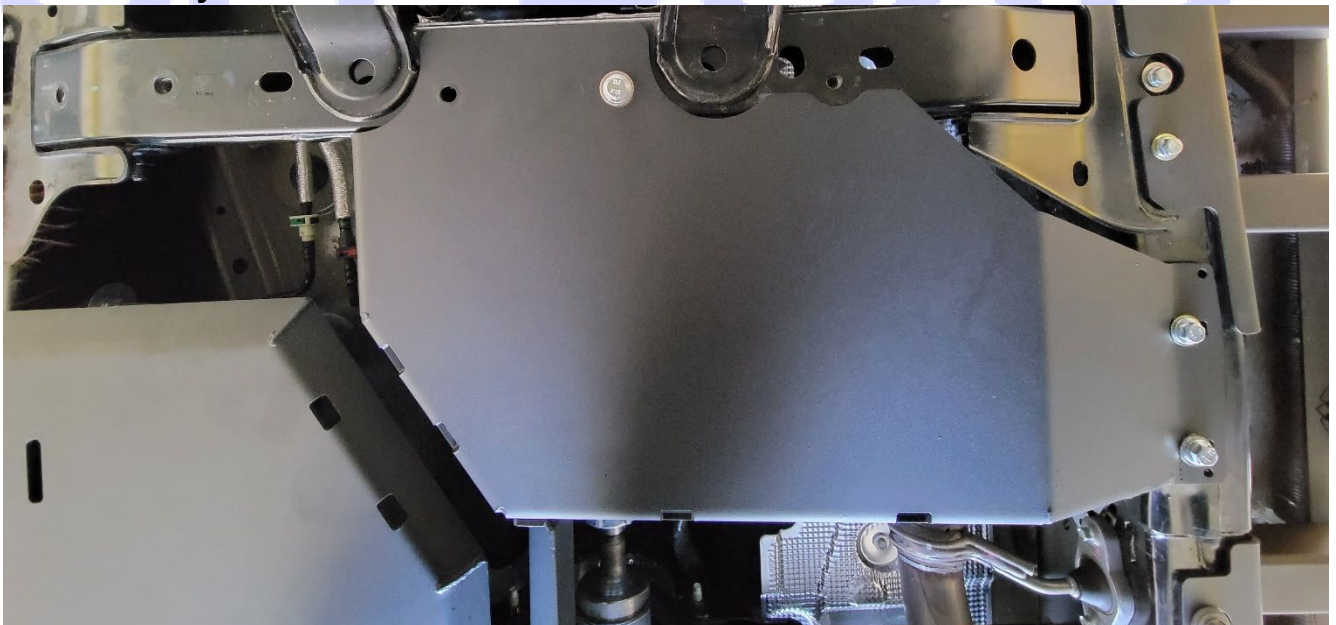
- 4) Loosely install the included Mounting Bracket (H2) with the use of two (2) 3/8"x1" Carriage Bolts, 3/8" Washer, 3/8" Split Washer, and 3/8" Nut.



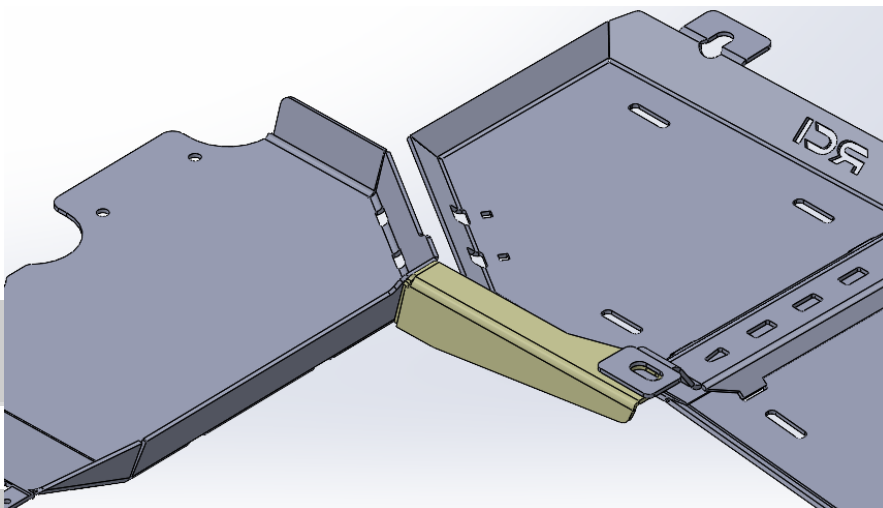
- 5) Align the slots on the Transfer Case skid plate with the installed bolts. Slide the transfer case skid from the center of the vehicle to the driver side, allowing the bolts to slide into the slots. Allow Transfer Case skid to rest on the washers and do not tighten. Match the orientation shown below.



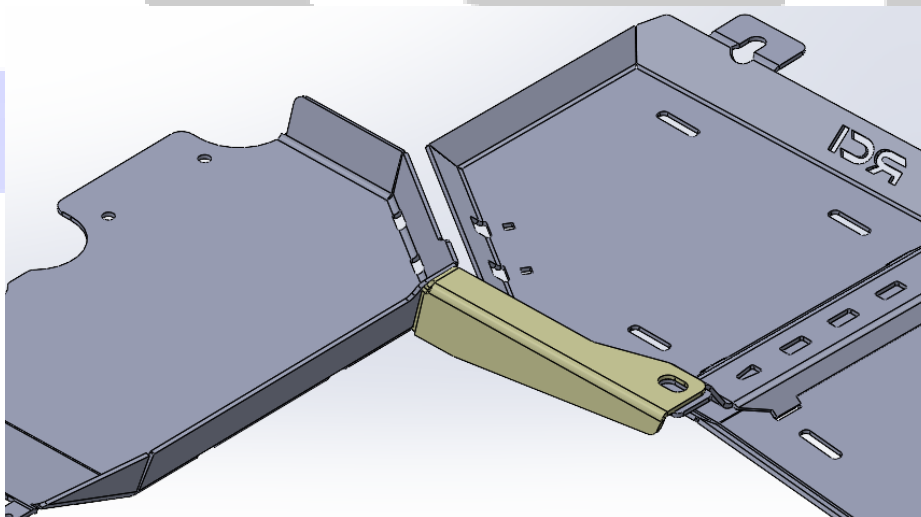
- 6) Adjust the Transfer Case skid plate to align with the mounting locations present on the central factory crossmember.



- 7) Loosely install M10X35mm bolts (2) and 3/8" washers (2) through the mounting points towards the front of the Transfer Case and into the factory crossmember mounting locations.
- 8) Use the factory hardware to install the Mounting Bracket to the vehicle's Front Fuel Mount Location.
 - a. The default mounting location for the Mounting Bracket will be "Below" the fuel tank strap or fuel tank skid/bash plate mount as shown below



- b. If installing the RCI Bronco Transfer Case Skid Plate in conjunction with the RCI Bronco Frame-Mounted Rock Sliders, install the Mounting Bracket "Above" the fuel tank strap or fuel tank skid/bash plate mount as shown below



- 9) Tighten all hardware.
- 10) Congratulations! Installation of your new RCI Ford Bronco Transfer Case Skid Plate is now complete!

Share your new install with us on social media!
We love seeing our products out in the wild!



www.rcimetalworks.com

970-797-3089

REV: 1 | 01/26/2022

Created: KL



Disclaimer: The products sold by RCI Metalworks are intended for off –road use only, should not be modified, and are for use only on the vehicle(s) specifically stated. RCI Metalworks makes no warranties express or implied, including of fitness for a particular purpose or merchantability. RCI Metalworks will not be liable for any damages arising out of the use or misuse of its products. It is the customers' responsibility to ensure the products are safely and properly attached to the vehicle, and all products should be installed by trained professionals. We strive to maintain extremely high quality standards; however, all RCI Metalworks products are individually handcrafted, may vary slightly, and may contain minor imperfections. Due to the nature of raw aluminum, the material may have minor scratches and other blemishes caused by the manufacturing process, especially on the back side of product. RCI Metalworks is constantly seeking to improve its products and reserves the right to make changes to any product.