

RCI Bronco 4Door Half Rack Install Guide

ITEM NO.	PART NUMBER	DESCRIPTION	QTY.
1	Bronco Roof Rack Mid Fairing		1
2	Bronco Rear Driver Side Panel		1
3	Bronco Rear Passenger Side Panel		1
4	Bronco Rear Fairing		1
5	Aluminum T-Slot R.2		2
6	Bronco Rear Mount - Front Inner		2
7	Bronco Rear Mount - Front Outer		2
8	Bronco Rear Mount - Rear Inner		2
9	Bronco Rear Mount - Rear Outer		2
10	1/4" Split Lock Washer	Hardware	18
11	1/4" Black Flat Washer	Hardware	36
12	1/4-20 x 0.875 Button Head	Hardware	18
13	Rubber Roof Rack Mount Pad	Hardware	4
14	1/4-20 x 1.25" Carriage Bolt	Hardware	8
15	1/4-20 Low Profile Hex Nut	Hardware	18

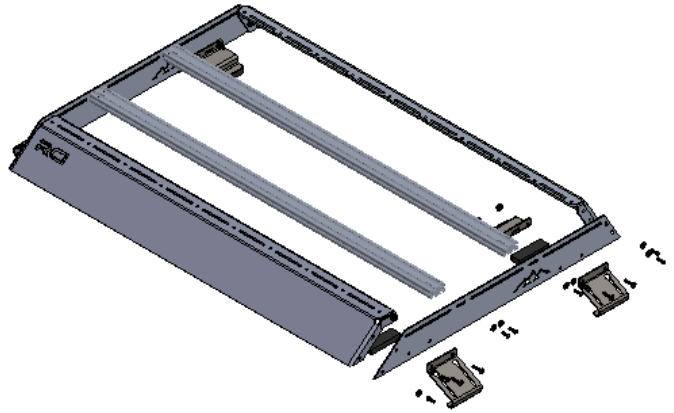


Figure 1. Bill of Materials

****Use hand tools, impact wrenches may cause damage if over torqued.**

Installation Procedure

1. Before starting the Bronco RCI Roof Rack installation process, please follow the RCI 4D Bronco Roof Support install guide to complete installation of the roof support bracket.
2. Begin by securing the aluminum extrusions to the driver side rear side panel with the use of 4 of the included 1/4 x 7/8" button head screws and washers as shown.
 - a. By default, the Aluminum T-Slot cross bars should be mounted to the two smaller oval cutouts in the rear side panels. However, they may need to be shifted to other positions to accommodate third party accessories and mounts.
 - b. It is recommended to install the T-slot cross bars with the slot opening facing upwards and on the same side of the vehicle (Driver or Passenger) for easier accessory installation.
 - c. It is recommended that the T-Slot cross bars and Rear Side Panels are assembled on a soft surface such as a large blanket to minimize the risk of accidental scratches.

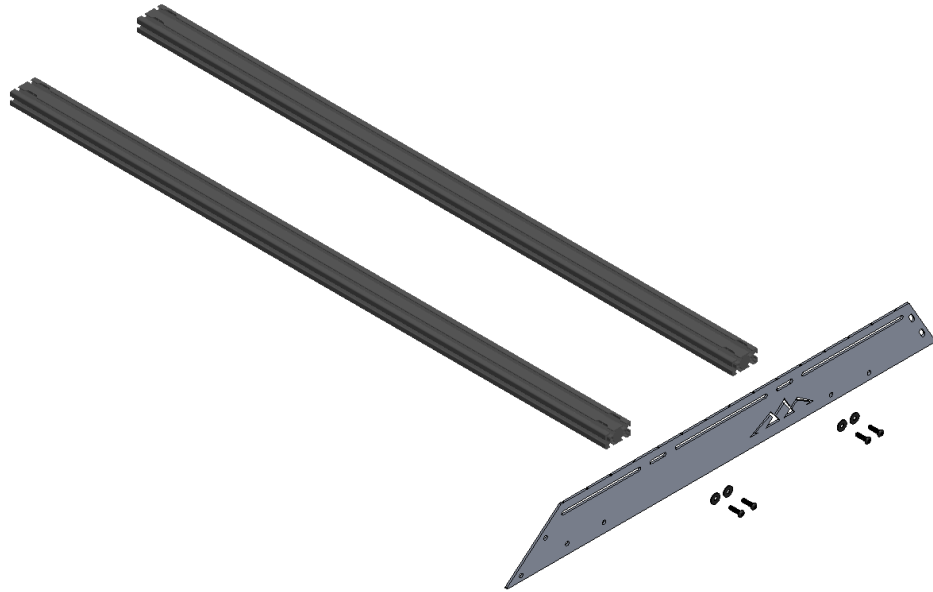


Figure 2. Assembly of half rack subassembly; crossbars and driver side panel

3. Attach the passenger side rear side panel with 4 more of the include 1/4 x 7/8" button head screws and washers.



Figure 3. Assembly of half rack subassembly; passenger side panel

4. Using four 1/4 x 7/8" button heads, nuts, lock washers, and eight 1/4" flat washers, secure the rear fairing to the rear side panels as shown.



Figure 4. Assembly of half rack subassembly; rear fairing

- a. The hardware should be installed in the order shown:

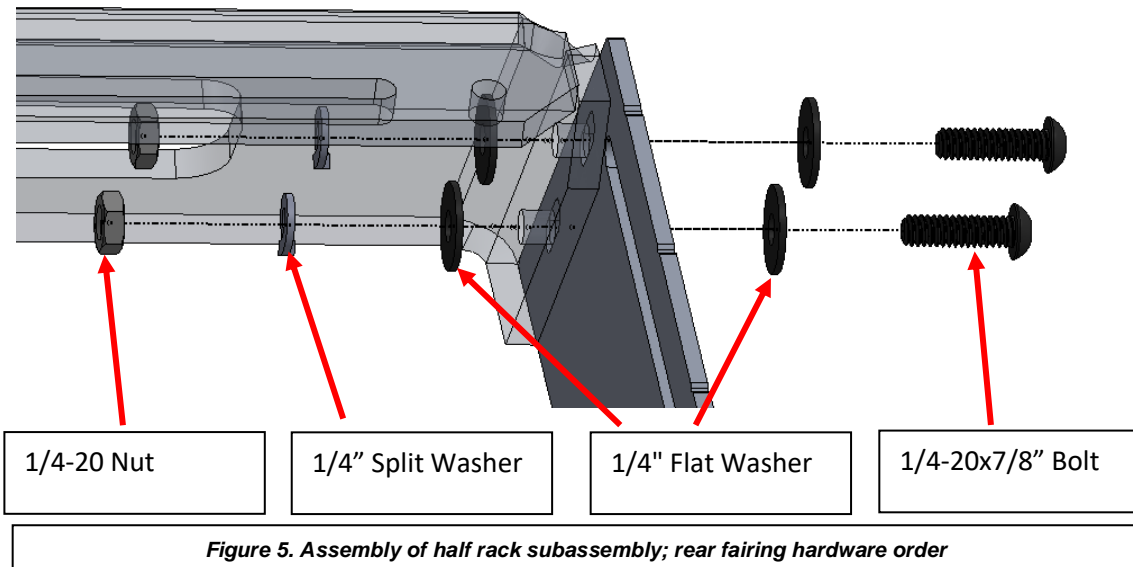


Figure 5. Assembly of half rack subassembly; rear fairing hardware order

5. Using six 1/4 x 7/8" button heads, nuts, lock washers, and twelve 1/4" flat washers, secure the mid fairing to the front of the rear side panels as shown.

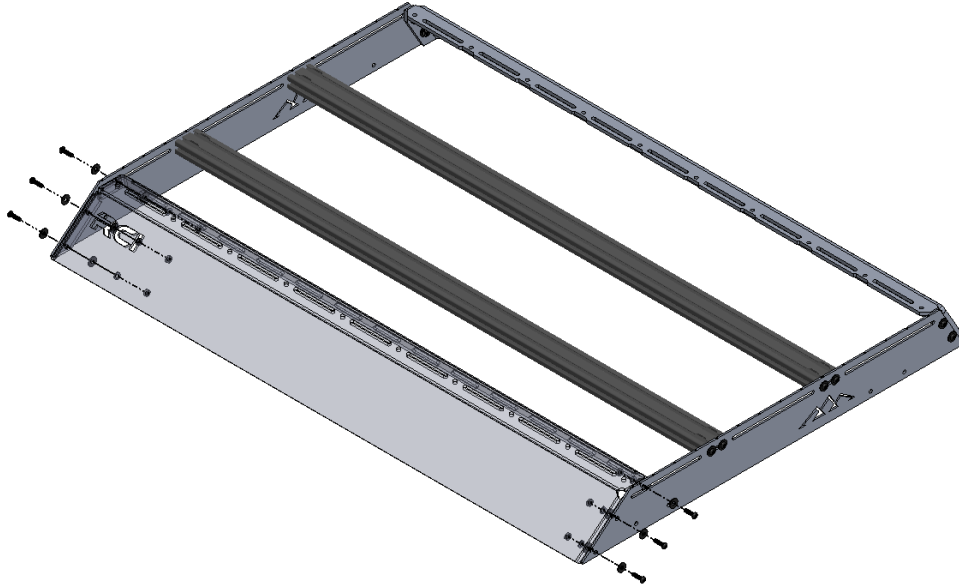


Figure 6. Assembly of half rack subassembly; Mid fairing

6. Separate the "rear rear" from the "rear front" mounts and identify the inner and outer mounts.
 - a. "Rear front" and "rear rear" mounts are not interchangeable. If holes on the mount and rear side panel do not align, try the other set of mounts.

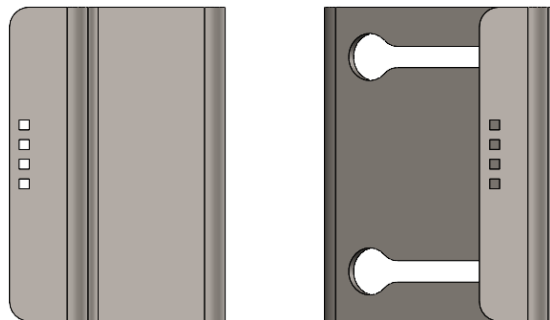
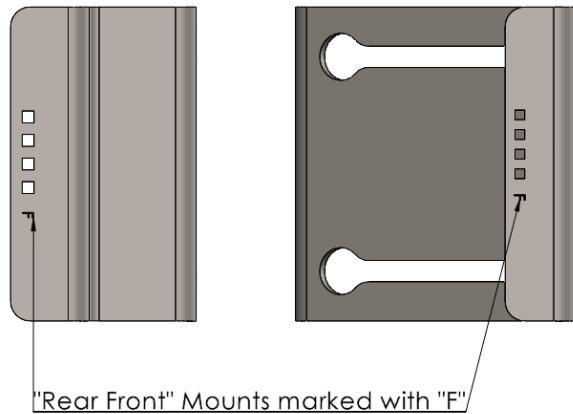


Figure 7. Identifying front and rear mounts

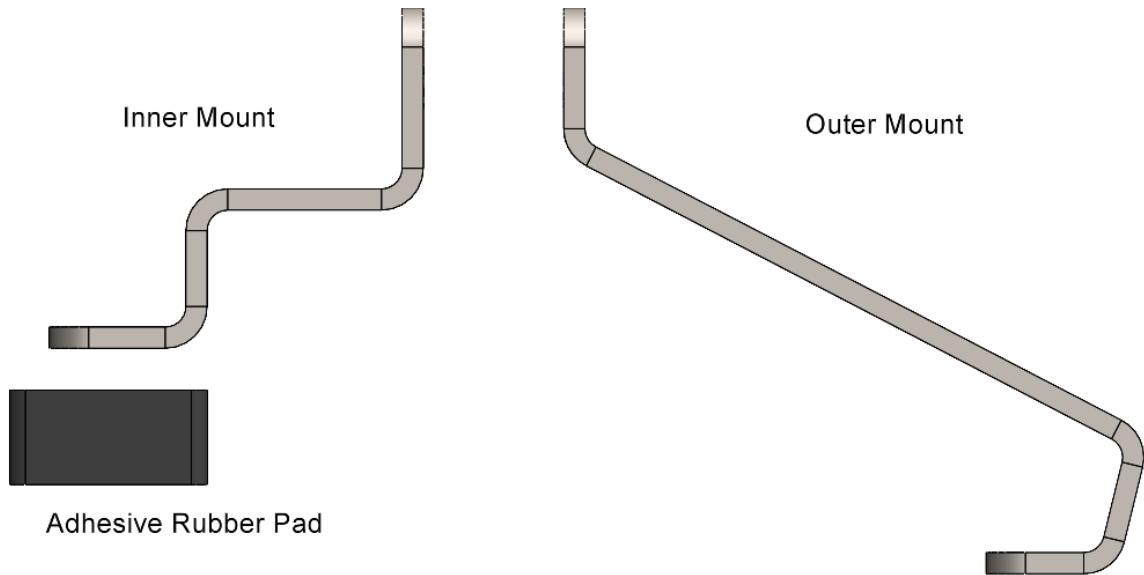


Figure 8. Identifying inner and outer mounts

7. Adhere the adhesive rubber pads to the lower “foot” of the inner mounts. The front of the rubber pads should be coincident, or in line with, the front of the “foot”.
 - a. The “rear front” inner mount is shown here, but the rubber pads should be installed on all four inner mounts.

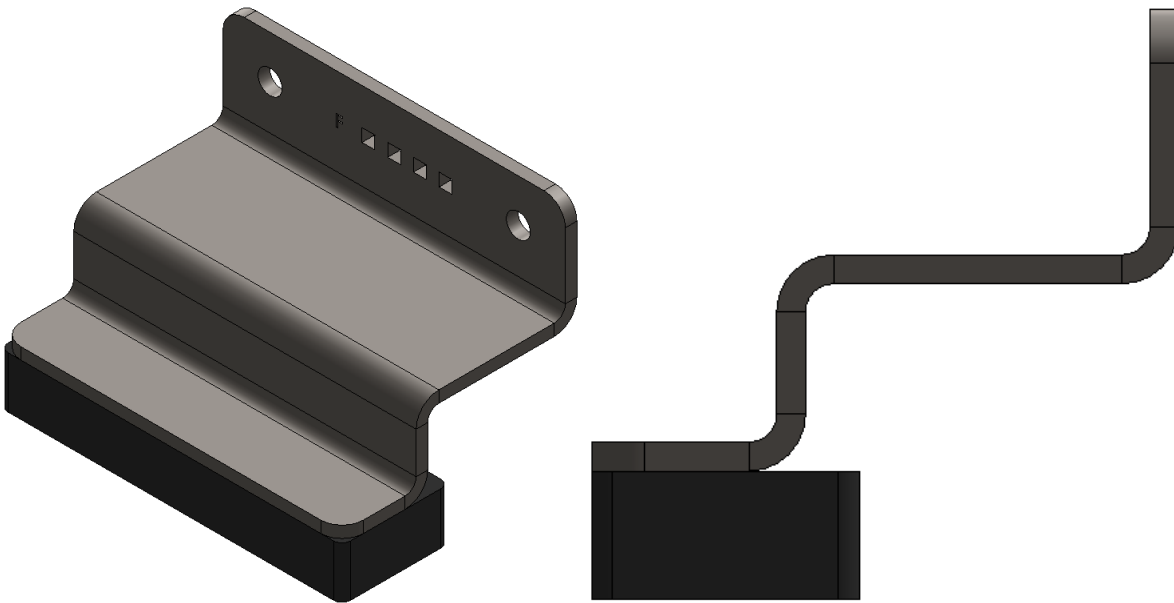


Figure 9. Installation of rubber pads on inner mounts

8. Place the half rack subassembly on the rear section of the vehicle roof.
9. Starting with the rear passenger side of the vehicle, insert the “rear rear” outer mount in the rear slot in the vehicle roof and align it with the half rack subassembly using two of the included 1/4-20 x 7/8” button head bolts and washers.



Figure 10. Installation of outer mount; vehicle roof slot



Figure 11. Installation of outer mount; outer mount installed

10. Install the “rear rear” inner mount on the 1/4-20 button heads from step 7 and loosely install two sets of 1/4-20 flat washer, split washer, and nuts just enough to keep the inner mount from backing off. The rack should still be free to slide left and right, forward, and rearward at this point.
11. Repeat steps 7 and 8 for the rear driver side of the subassembly.
12. Steps 7 and 8 can then be repeated for the passenger and driver “rear front” mounts at the front of the half rack subassembly.
13. With all mounts loosely secured to the half rack subassembly and centered in the roof slots as best as possible, begin tightening the rack mounts while applying upward pressure to the rack.
 - a. Start with the rear mounts. Tighten the front mounts once the rear mounts are fully tightened.
 - b. It may be necessary to alternate between tightening the passenger and driver sides to prevent one side from becoming excessively tensioned.
 - c. Applying upward pressure to the rack while tightening is critical to allowing the inner mounts to seat properly. Once the rack is tightened appropriately, the half rack subassembly should sit with the bottom edge of the side panels approximately 1/4” from the top of the vehicle roof.

Congrats! The RCI Bronco Half Rack is now installed!

Share your new install with us on social media!
We love seeing our products out in the wild!



Enjoy the new roof rack!!!

Disclaimer: The products sold by RCI Metalworks are intended for off-road use only, should not be modified, and are for use only on the vehicle(s) specifically stated. RCI Metalworks makes no warranties express or implied, including of fitness for a particular purpose or merchantability. RCI Metalworks will not be liable for any damages arising out of the use or misuse of its products. It is the customers' responsibility to ensure the products are safely and properly attached to the vehicle, and all products should be installed by trained professionals. We strive to maintain extremely high quality standards; however, all RCI Metalworks products are individually handcrafted, may vary slightly, and may contain minor imperfections. Due to the nature of raw aluminum, the material may have minor scratches and other blemishes caused by the manufacturing process, especially on the back side of product. RCI Metalworks is constantly seeking to improve its products and reserves the right to make changes to any product.