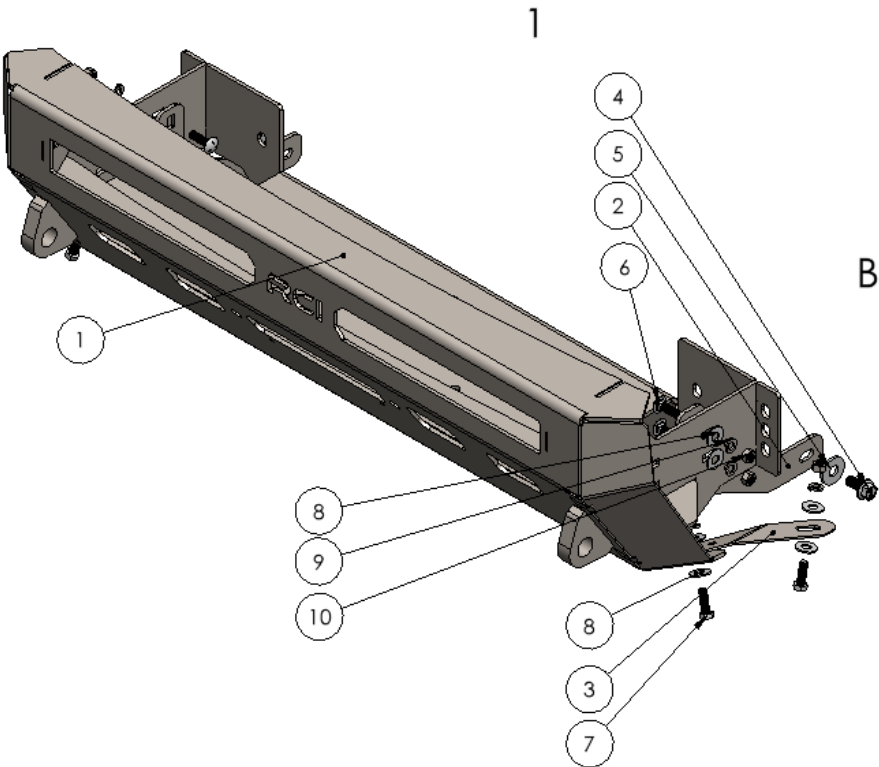


RCI 14-23 Toyota 4Runner Pike Bumper Install Guide

2			
ITEM NO.	PART NUMBER	DESCRIPTION	QTY.
1	14-23 4runner Insert Bumper	RCI Component	1
2	T4R Insert Bumper Mounting Bracket	RCI Component	2
3	T4R Insert Bumper Trim Bracket	RCI Component	2
4	M12 x 25mm x 1.25 Flanged Hex Bolt	Hardware	2
5	1/2" Washer	Hardware	2
6	3/8 x 1.5" Carriage Bolt	Hardware	4
7	3/8" x 1 1/8" Hex Bolt	Hardware	4
8	3/8 Washer	Hardware	12
9	3/8 Split Washer	Hardware	8
10	3/8 Hex Nut	Hardware	8



<div>UNLESS OTHERWISE SPECIFIED:</div> <div>DIMENSIONS ARE IN INCHES TOLERANCES: FRACTIONAL ±0.010 ANGULAR: BEND ±0.5 TWO PLACE DECIMAL ± 0.015 THREE PLACE DECIMAL ± 0.010</div> <div>PROPRIETARY AND CONFIDENTIAL</div> <div>THE INFORMATION CONTAINED IN THIS DRAWING IS THE SOLE PROPERTY OF RCI Offroad. ANY REPRODUCTION IN PART OR AS A WHOLE WITHOUT THE WRITTEN PERMISSION OF RCI Offroad IS PROHIBITED.</div>	DRAWN		NAME	RCI OFFROAD				
	SOURCE		GM					DATE
			HiTech	NA	TITLE: 14-23 4Runner Pike Bumper Install Guide			
					Item Number BOM			
				DO NOT SCALE DRAWING				
								SCALE: 1:12 WEIGHT:
				SHEET 1 OF 1				

2

1

INSTALLATION STEPS:

****Use hand tools, impact wrenches may cause damage if over torqued.****

- 1) Begin by unpacking and removing all components and hardware. Please verify that all hardware and mounting components are present. Reference your original order invoice and verify all items are accounted for.
- 2) Open the hood of the vehicle and disconnect the negative terminal on the battery before proceeding.
- 3) Remove the factory plastic support cover by removing the 13 plastic clips holding it in place.
 - a. Set aside plastic cover once removed.

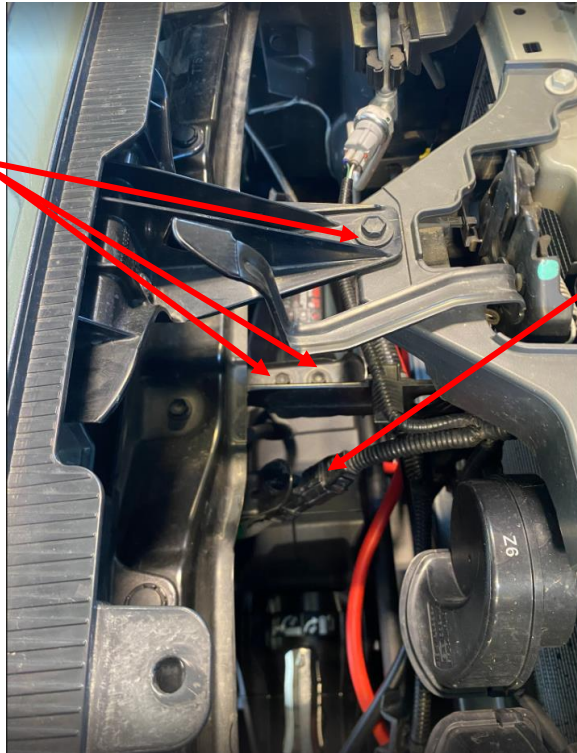
Remove
and save all
clips.



Figure 1: Clips and trim to be removed.

- 4) Remove the three (3) M10 bolts as depicted below and disconnect the ACC sensor.

Remove
three M10
bolts.



Disconnect
ACC sensor.

Figure 2 M10 bolts to remove and harness to disconnect.

- 5) Remove the 6 trim clips securing the bumper to the front crossmember.



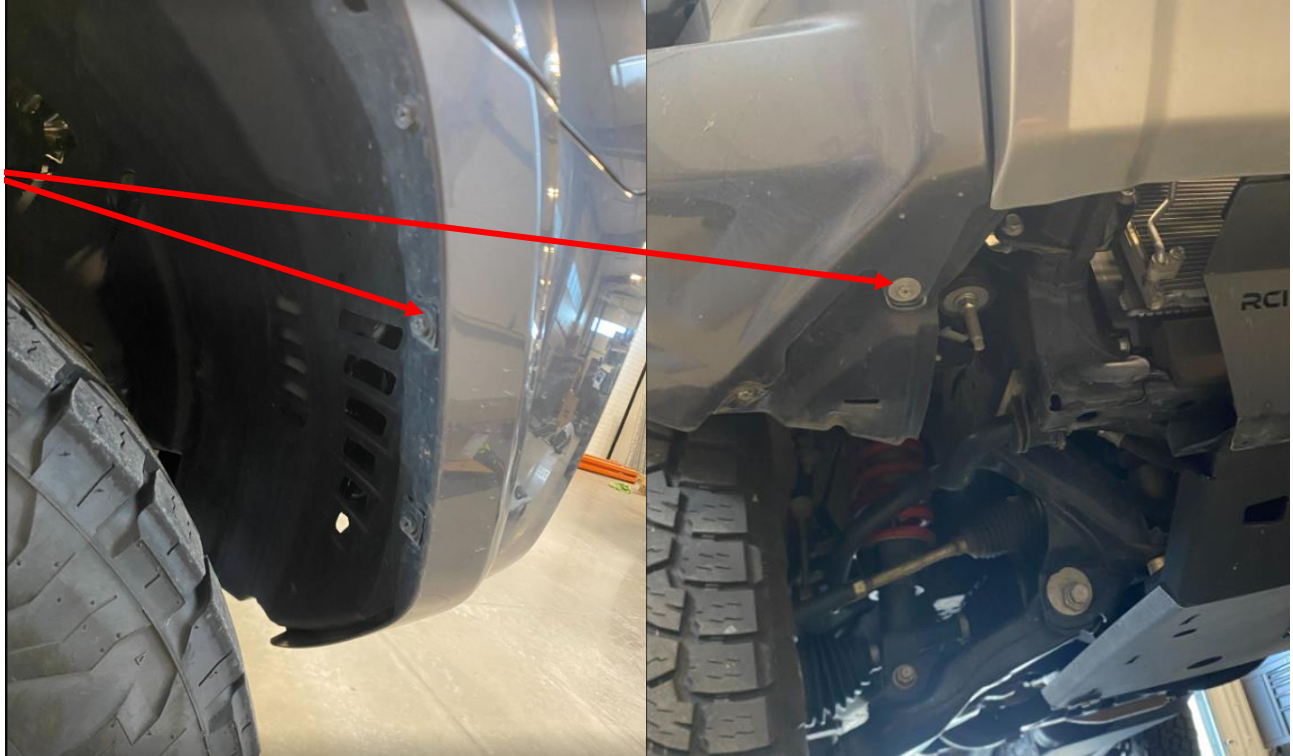
Remove clips
securing the grill
to the
crossmember.

Figure 3: Clips securing grill to crossmember.

- 6) Remove all trim screws inside the vehicles front wheel well and under the bumper. Save all OEM hardware until the installation is complete.

There will be 5 screws to remove on the passenger side and 6 on the driver side.

Remove all
trim
screws.



- 7) Remove the OEM air dam or any filler plates that are connected to the lower side of the bumper.
- 8) Disconnect the fog lights by unplugging the large connector located behind the driver side fog light.

Disconnect
fog lights.



Figure 4: Fog light connector.

- 9) After the clips and screws are removed from the bumper, the ACC is unplugged and fog lights are disconnected, the bumper can be removed.
- 10) The bumper should now only be held on by clips. To disconnect the clips, start from the wheel well and pull on the wing of the bumper until it separates from the vehicle. With the side disconnected work around to the front of the vehicle gently pulling on the plastic bumper to release all the clips. Repeat this on the opposite side of the vehicle to safely remove all the clips.

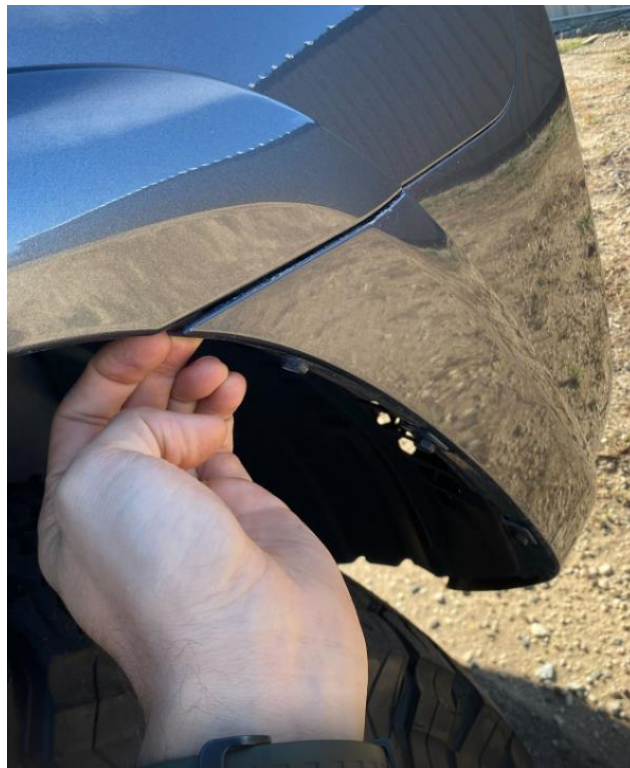


Figure 5: Start bumper removal from bumper corners.

- 11) Set the OEM plastic bumper aside once removed from the vehicle.
- 12) Next take off the OEM crash bar by removing the eight (8) 14mm bolts holding it in place.
 - a. Save the OEM 14mm bolts to install the RCI bumper later.

Remove the
four (4) 14mm
bolts per side.



Figure 6: OEM crash guard to remove.

- 13) The radiator plastic air deflectors need to be trimmed for proper fitment of the RCI Bumper.
 - a. Copy the outline of where to cut as shown below.
 - b. Use a utility knife, angle grinder, Dremel or something similar to remove the lower section of the air deflectors.
 - c. Be careful not to cut any wiring or hoses during this step.



- 14) When installing a winch, the factory power steering line needs to be adjusted to avoid contact.
- 15) Loosen the 10mm bolt securing the power steering line on each side of the vehicle. Once loose rotate the up as much as possible before retightening. If a bigger winch is being installed RCI recommends using a zip tie to secure the power steering line to the vertical radiator support. Reference the figure below.

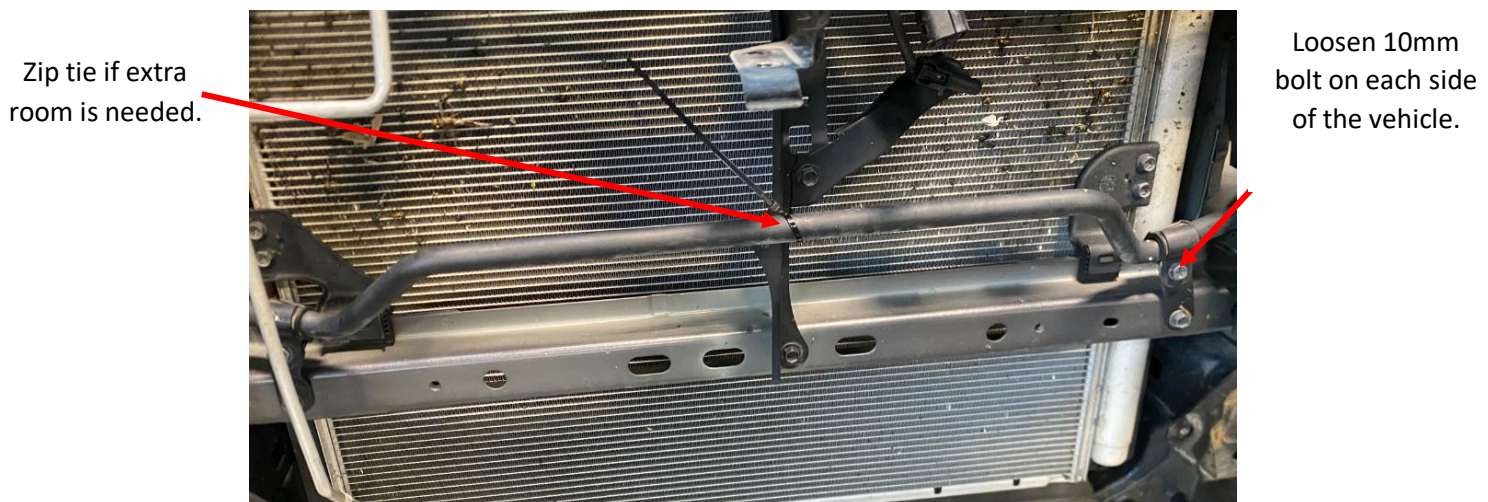


Figure 7: Power steering line relocation

- 16) Collect the OEM plastic bumper that was fully removed in Step 10.
- For TRD Offroad and TRD Pro models, remove the bumper valence by disconnecting the clips on the back side.
 - Pull off the wiring harness that is adhered to the back side of the bumper.

Pull off wiring harness and tuck away.

Remove clips holding valence in place.

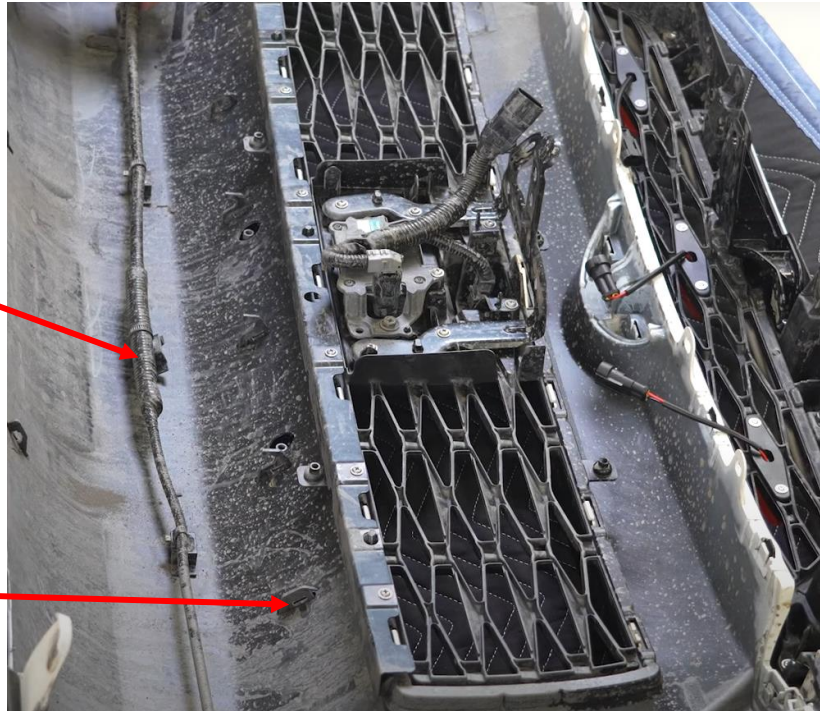


Figure 8: Valence and wiring needs to be removed.

- 17) Flip the bumper back over and mask/tape off the areas that need to be cut.
- a. From the lower part of the grill measure down $1 \frac{3}{4}$ " and mark along the bumper
 - b. From the corners measure $\frac{1}{2}$ " and mark a line
 - c. Connect the lines to the recess on the side of the bumper and follow it all the way down.

Measure down $1 \frac{3}{4}$ " and mark cut line across the length of the bumper.



Figure 9: Cut line location.



Figure 10: Corner cut line location

Follow the
inner radius of
the recess with
a cut line.



Figure 11: Cut line location.

- 18) Once the cut line is drawn on the bumper, use a cutoff wheel, Dremel, or something similar to cut out the center section.
- Use a file, sandpaper, or a flap disk to clean up the edge of the bumper for a clean finish.
 - If desired, install black edge trim over the cut edge of the bumper. Reference below.



Figure 12: Finished cut with trim installed.

19) At this time, install any accessories (Light Bar, Winch, Fairlead, etc.) into the bumper before continuing with the installation process.

20) Reinstall the OEM bumper onto the vehicle by following the installation steps in reverse.



Figure 13: Vehicle with cut bumper reinstalled

21) Collect the RCI Bumper along with the remaining 14mm OEM mounting bolts that were removed in Step 12.

- 22) To help with install, collect two (2) of the OEM 14mm bolts. Thread one of these per side from the back of the frame to hang the RCI Bumper in place while threading in the remaining 14mm bolts.

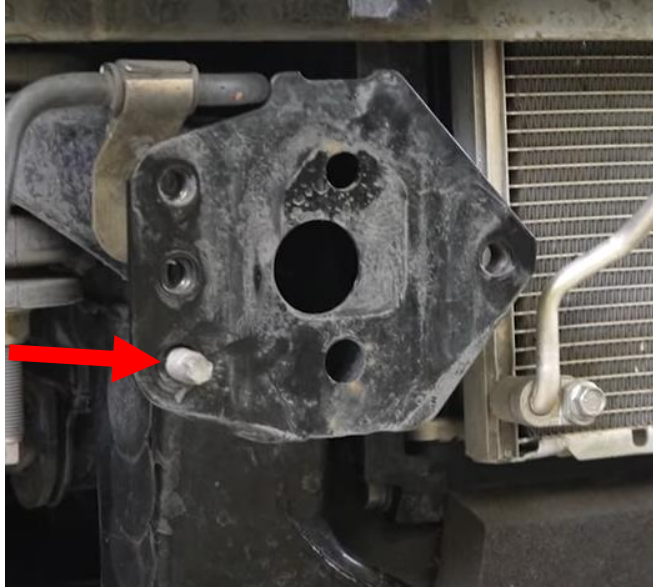


Figure 14: Reverse installed 14mm bolt

- 23) Lift the RCI Bumper into place by hanging the lowest mounting hole on the 14mm bolt.
- 24) Hold the bumper in place and begin to loosely install the remaining 14mm bolts securing it to the vehicle frame.
- 25) Once all 8 14mm bolts are loosely installed, adjust the bumper to liking and fully tighten all mounting bolts.

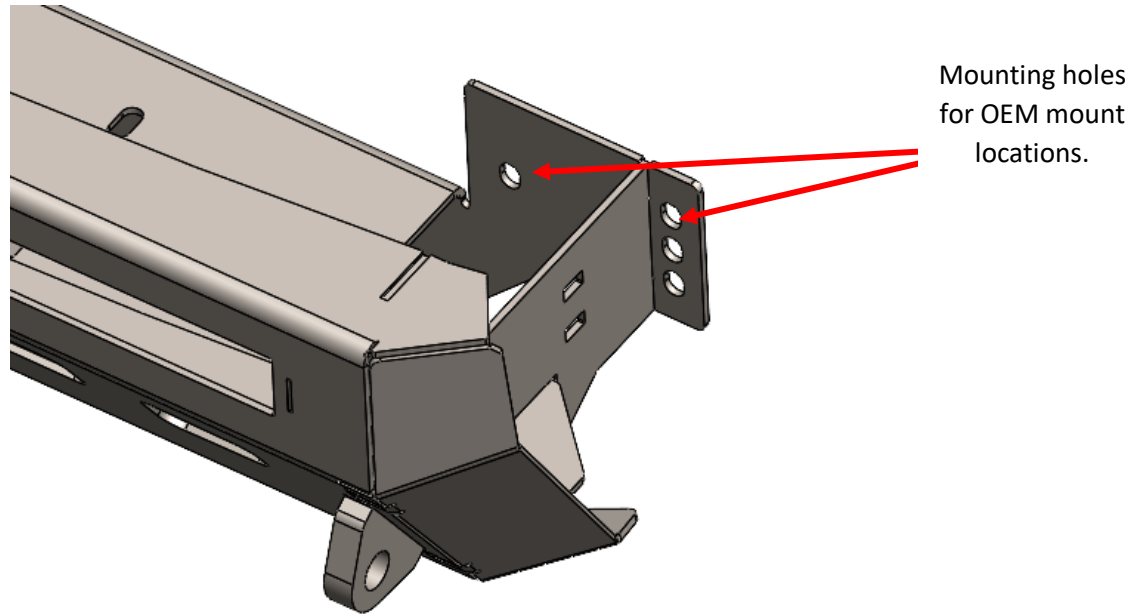


Figure 15: Bumper mounting locations



Figure 16: Correct installation of 14mm bolts.

- 26) Collect two (2) of the T4R Insert Mounting Brackets, four (4) 3/8" x 1 1/2" carriage bolts, two (2) M12 x 25mm hex bolts, two (2) 1/2" washers, four (4) 3/8" washers, four (4) 3/8" split washers, and four (4) 3/8" hex nuts.
- 27) Install the brackets on the inside of the bumper lining up the two rectangle holes with the two rectangle holes on the bumper. The slotted part of the bracket will line up with a threaded hole

on the side of the vehicle frame. This threaded hole will be behind a black sticker that needs to be removed before installing the bracket. Reference the figure below.

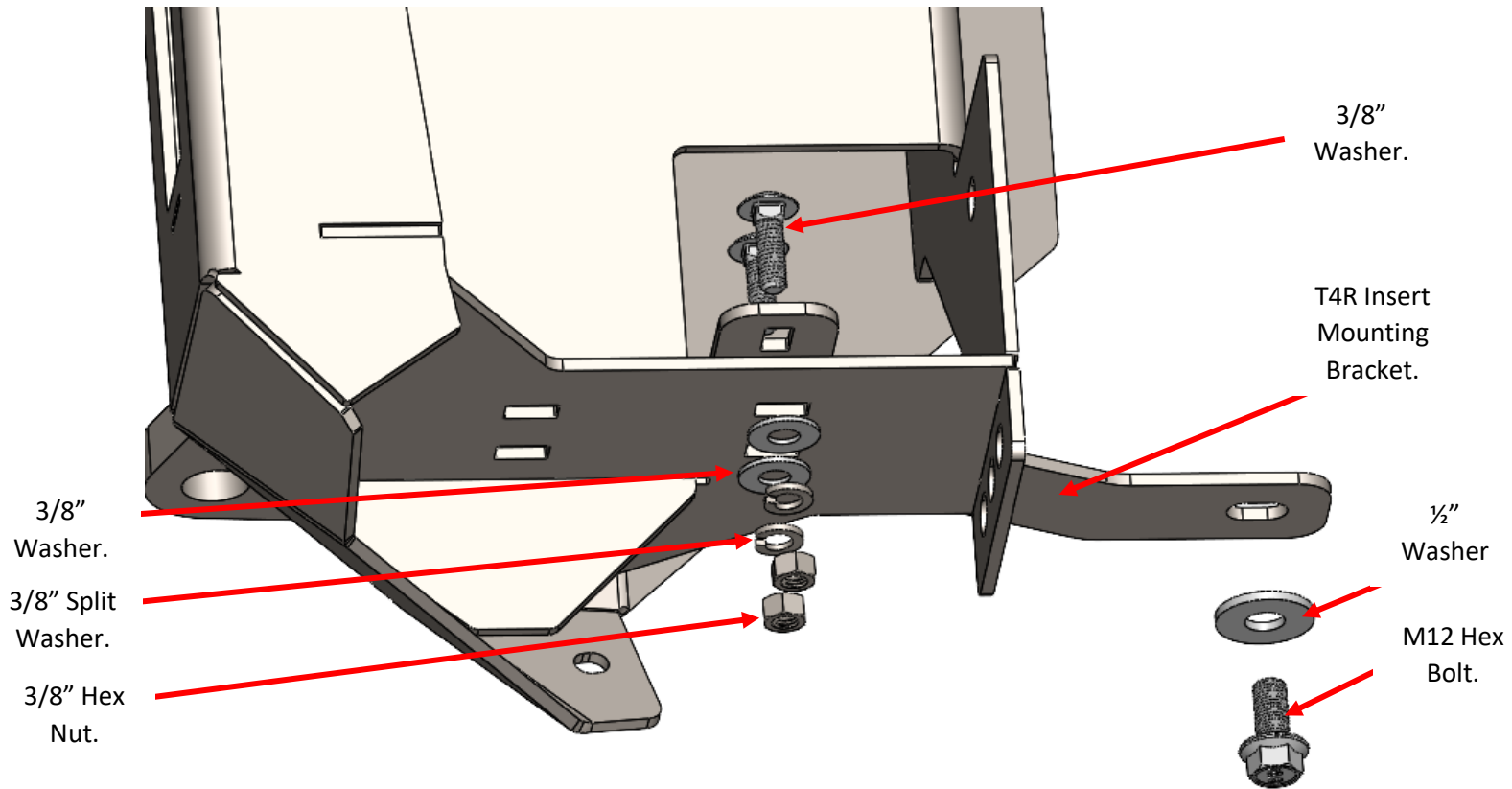


Figure 17: Hardware depiction

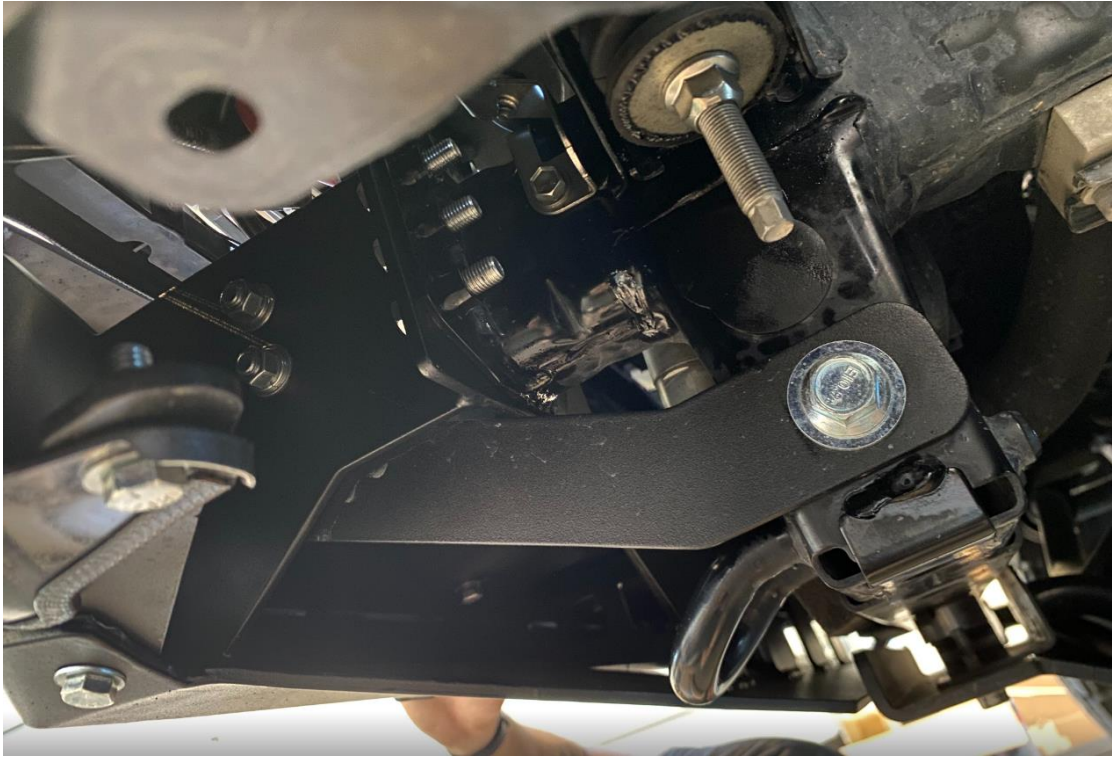


Figure 18: Correct installation of Support Bracket

- 28) Next collect the two (2) T4R Insert Bumper Trim Brackets. The bracket with the “D” mounts on the driver side and the bracket with the “P” mounts on the passenger side.
- Collect four (4) 3/8” x 1 1/8” hex bolts, eight (8) 3/8” washers, four (4) 3/8” split washers, and four (4) 3/8” hex nuts.
- 29) Install the trim brackets on the inside of the bumper connecting to the holes on the plastic OEM bumper. Install brackets on both sides of the vehicle as depicted below.

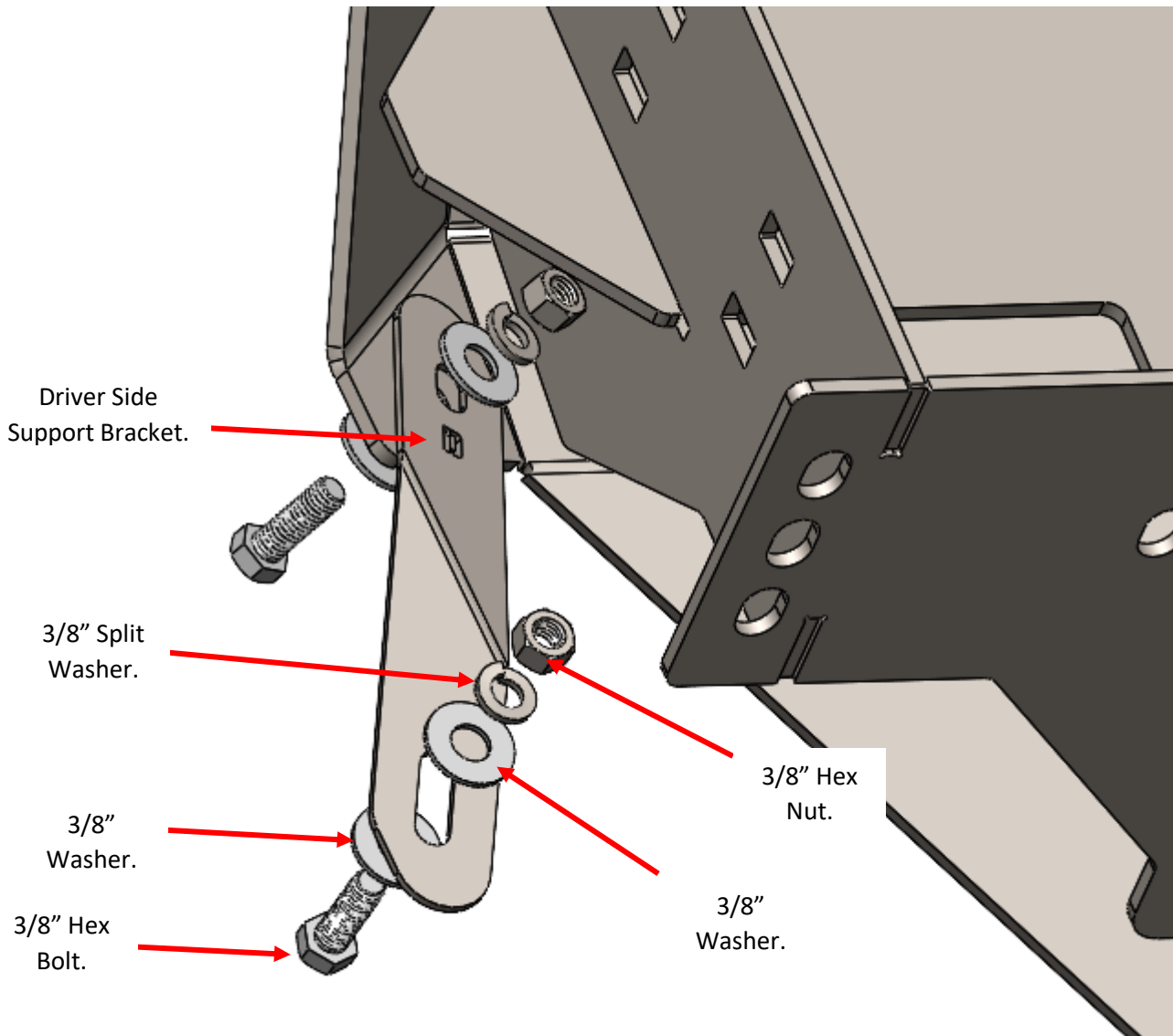


Figure 19: Hardware depiction

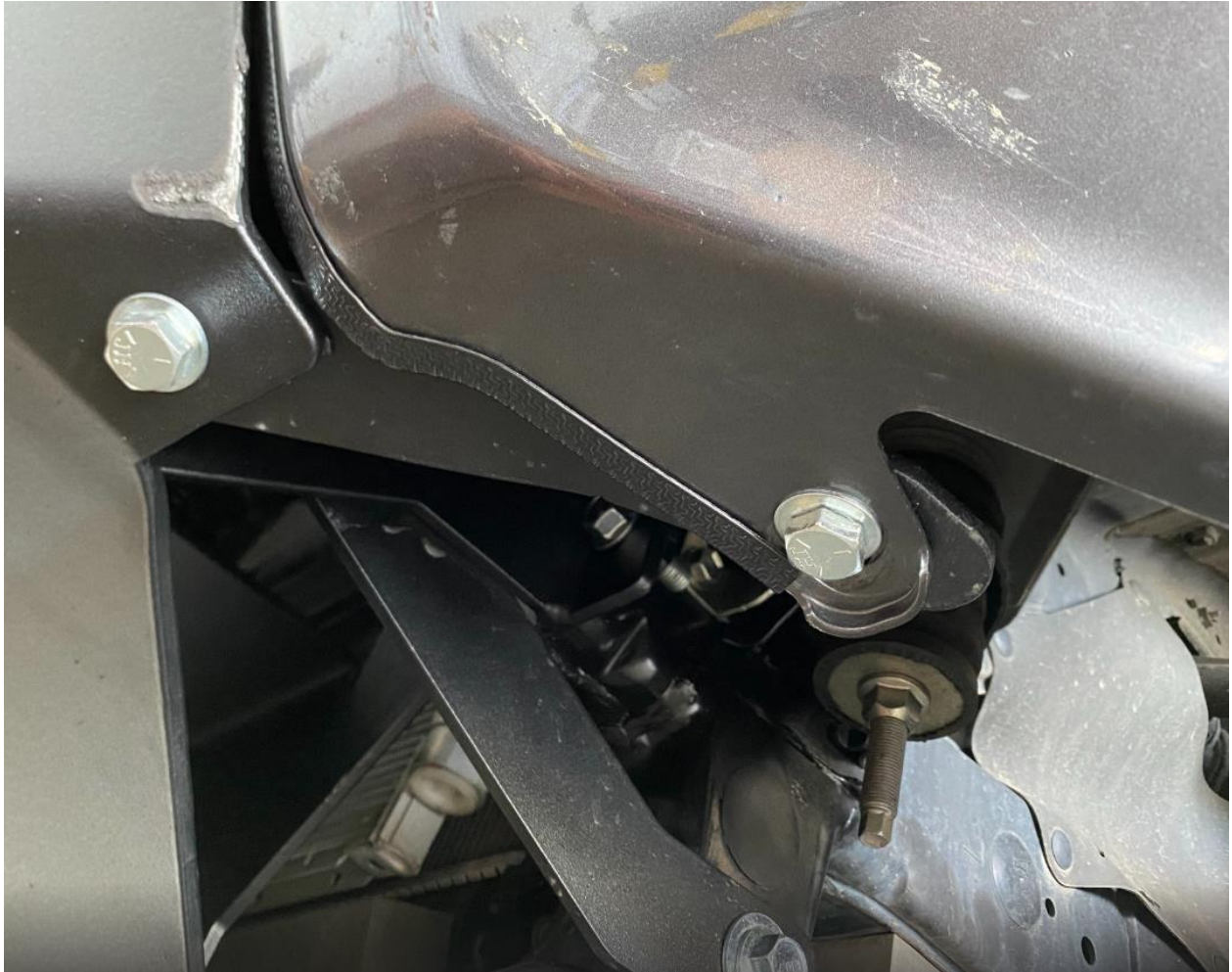


Figure 20: Correct installation of Support Bracket

- 30) Complete the installation by ensuring all mounting hardware is snugged down and remember to reconnect the ACC sensor and the fog lights. Use zip ties to secure any loose wiring and connections.



Enjoy your new RCI protection!



Share your new install with us on social media!
We love seeing our products out in the wild!

www.rcimetalworks.com

sales@rcioffroad.com

970-797-3089

REV: 1 | 9/29/2022



Disclaimer: The products sold by RCI Metalworks are intended for off –road use only, should not be modified, and are for use only on the vehicle(s) specifically stated. RCI Metalworks makes no warranties express or implied, including of fitness for a particular purpose or merchantability. RCI Metalworks will not be liable for any damages arising out of the use or misuse of its products. It is the customers' responsibility to ensure the products are safely and properly attached to the vehicle, and all products should be installed by trained professionals. We strive to maintain extremely high quality standards; however, all RCI Metalworks products are individually handcrafted, may vary slightly, and may contain minor imperfections. Due to the nature of raw aluminum, the material may have minor scratches and other blemishes caused by the manufacturing process, especially on the back side of product. RCI Metalworks is constantly seeking to improve its products and reserves the right to make changes to any product.