

RCI Bronco 4- Door Roof Support Install Guide

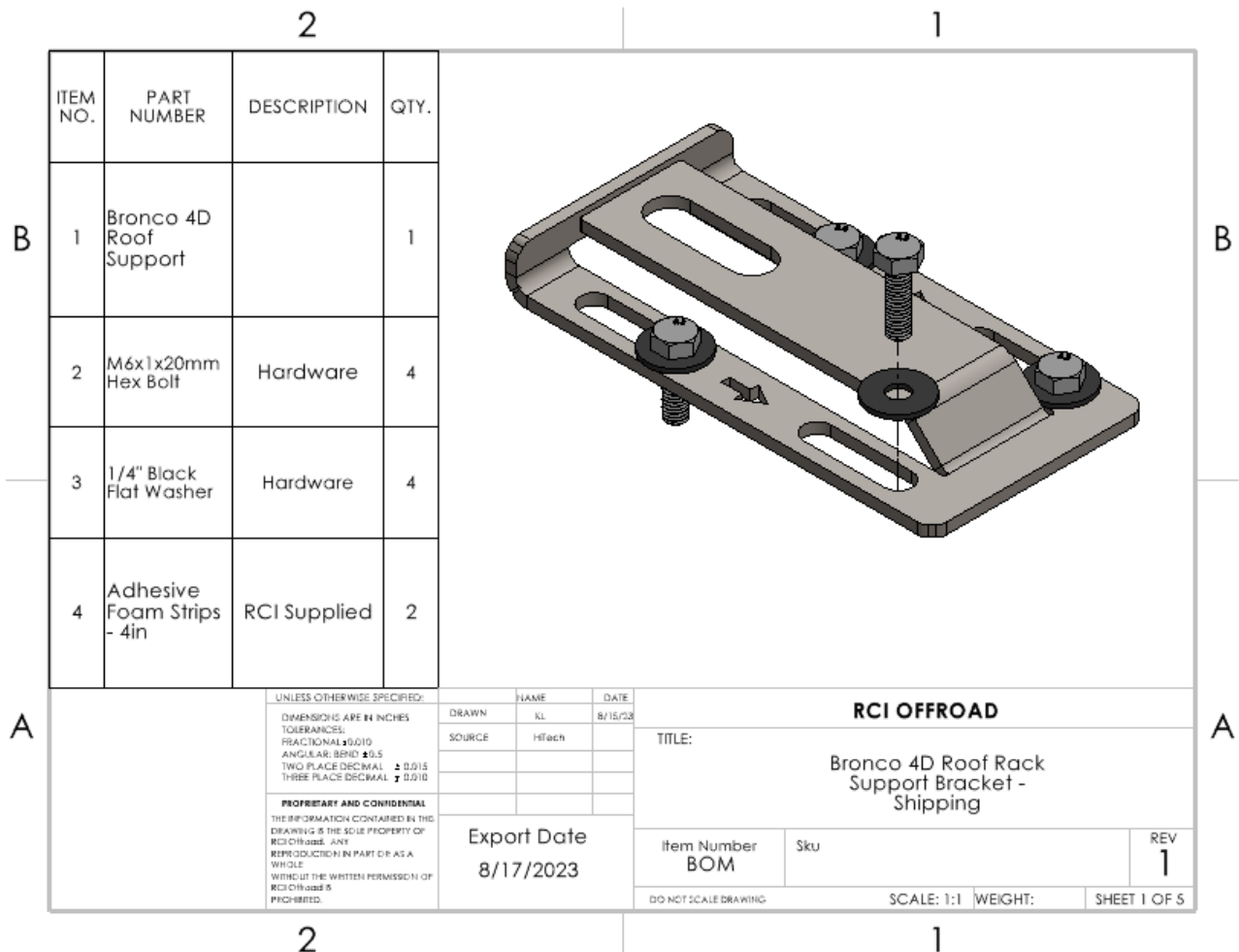


Figure 1: Assembly with hardware

- Begin by unpacking and removing all components and hardware. Please verify that all hardware, components, and mounting components are present. Please reference your original order invoice and verify all items are accounted for.
 - If installing the RCI support bracket on a vehicle with an existing roof rack, the rack will need to be removed prior to beginning the installation process.
 - If installing the RCI support bracket on a vehicle with an existing RCI roof rack, the front half of the rack will need to be removed prior to beginning the installation process.
 - Remove the 8 sets of nuts, bolts, and washers that secure the 4 parallelogram plates connecting the front half of the rack to the rear half of the rack.
 - It is recommended to place shop rags, a moving blanket, or other cover between the roof rack and the vehicle roof at this time to prevent scratching.

- ii. Remove the 4 sets of nuts, bolts, and washers that secure the front fairing to the front of the roof rack. Remove the front fairing.
- iii. Remove the 4 sets of nuts securing the roof rack front mounts to the vehicle's "Accessory Ready" mounts above the windshield.
- iv. Remove the front half of the roof rack from the vehicle by lifting forwards and upwards until the roof rack front mounts clear the threaded studs of the "Accessory Ready" mounts.

2. Remove the vehicle roof.

- a. Begin by removing the 3 roof panels from the vehicle starting with the front driver side roof panel.
- b. Remove the 2 bolts securing the front of the rear roof section to the top of the vehicle roll cage.



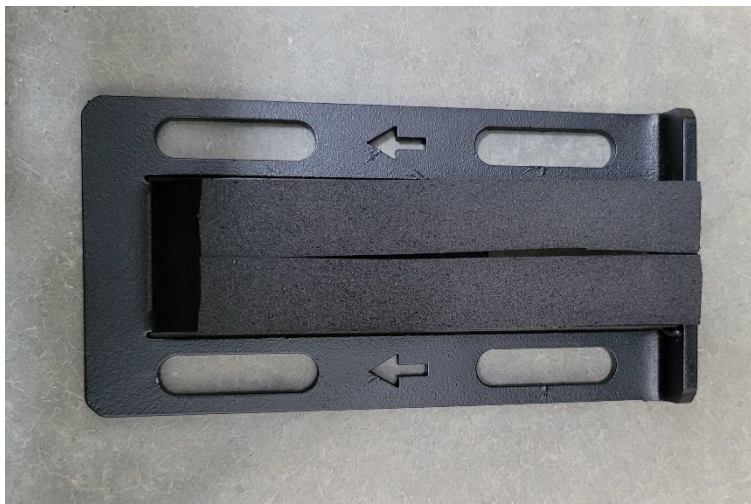
- c. Remove the 6 bolts securing the rear roof section to the trunk/tub of the vehicle body.



- d. Remove the rear roof section.

3. Install the RCI Support Bracket.

- a. Apply the included adhesive foam strips to the top face of the support bracket.



- b. With the rear roof section removed, remove the 4 bolts that secure the center latching plate.
- c. Align the RCI roof support bracket with the rear face of the center latching plate and the arrows of the support bracket pointing towards the front of the vehicle.



- d. Install the included M6 hardware and washers to secure the support bracket and latching plate to the vehicle roof.
4. Re-install the vehicle roof.
- a. Align the vehicle roof with the tub/trunk of the vehicle body.
 - b. Secure the vehicle roof to the vehicle body and roll cage with the use of the hardware from step 2.
 - c. Reinstall the 3 roof panels from step 2 starting with the large central panel.
5. If applicable, reinstall the roof rack in step 1 or continue on to the RCI roof rack install guide!

Enjoy your new RCI Bronco product!



Share your new install with us on social media!

We love seeing our products out in the wild!

www.rcimetalworks.com

sales@rcioffroad.com

970-797-3089



Disclaimer: The products sold by RCI Metalworks are intended for off-road use only, should not be modified, and are for use only on the vehicle(s) specifically stated. RCI Metalworks makes no warranties express or implied, including of fitness for a particular purpose or merchantability. RCI Metalworks will not be liable for any damages arising out of the use or misuse of its products. It is the customers' responsibility to ensure the products are safely and properly attached to the vehicle, and all products should be installed by trained professionals. We strive to maintain extremely high quality standards; however, all RCI Metalworks products are individually handcrafted, may vary slightly, and may contain minor imperfections. Due to the nature of raw aluminum, the material may have minor scratches and other blemishes caused by the manufacturing process, especially on the back side of product. RCI Metalworks is constantly seeking to improve its products and reserves the right to make changes to any product.