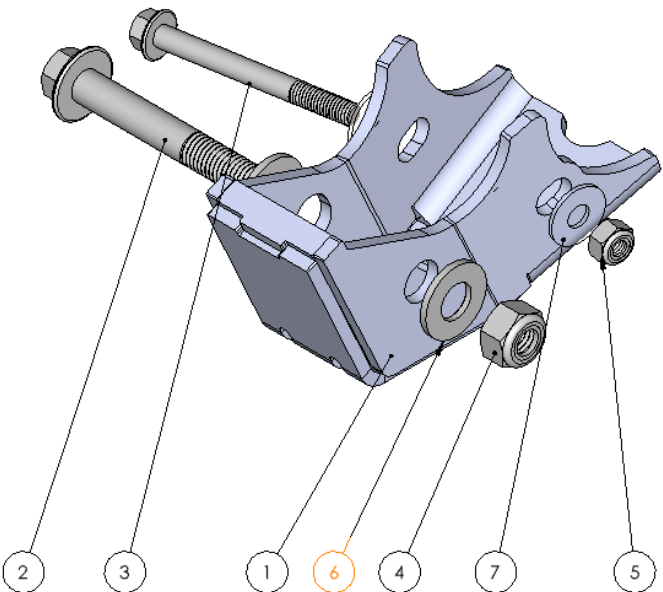


RCI 05+ TACOMA REAR SHOCK MOUNT SKID PLATE INSTALLATION GUIDE

ITEM NO.	PART NUMBER	QTY.
1	.188MS Toyota Tacoma Shock Mount Skid	2
2	M12 x 80mm Hex Bolt	2
3	M8 x 80mm Hex Bolt	2
4	M12 Nylock Nut	2
5	M8 Nylock Nut	2
6	1/2" 1"OD Washer	4
7	5/16" Washer	4



RCI OFFROAD		
TITLE: 07-23 Tacoma Rear Shock Skid Install Guide		
Item Number Sheet1(2)	SKU	REV 3
SCALE: 1:4 WEIGHT:		SHEET 1 OF 1

INSTALLATION STEPS:

****Use hand tools, impact wrenches may cause damage if over torqued.**

1. **Begin by unpacking and removing all components and hardware. Please verify that all hardware, components, and mounting components are present. Please reference your original order invoice and verify all items are accounted for.**
2. **Locate the OEM rear shock bolt on either side of the vehicle. If performing the install from a vehicle lift, ensure the tire is supported by a jack stand.**
3. **Remove the lower shock bolt using a 17mm socket and wrench.**
 - a. **NOTE: the shock bolt may bind from the pressure of the shock. Use a screwdriver and mallet to assist removing the bolt.**

4. To access the rear mounting location, remove the leaf spring U-bolt plate with a 7/8" socket.
 - a. NOTE: Skip this step if your vehicle is running a U-Bolt Flip Kit.
5. Collect one (1) RCI Tacoma Shock Mount Skid with one (1) M12 x 80mm Bolt, one (1) M8 x 80mm Bolt, one (1) M12 Nylock Nut, one (1) M8 Nylock Nut, two (2) 1/2" Washers, and two (2) 5/16" Washers.
6. Hold the Shock Mount Skid in position and install the M12 x80mm Bolt with a 1/2" washer from the outside of the vehicle.
 - a. NOTE: Use a screwdriver to pry the shock up to align the hole with the bolt

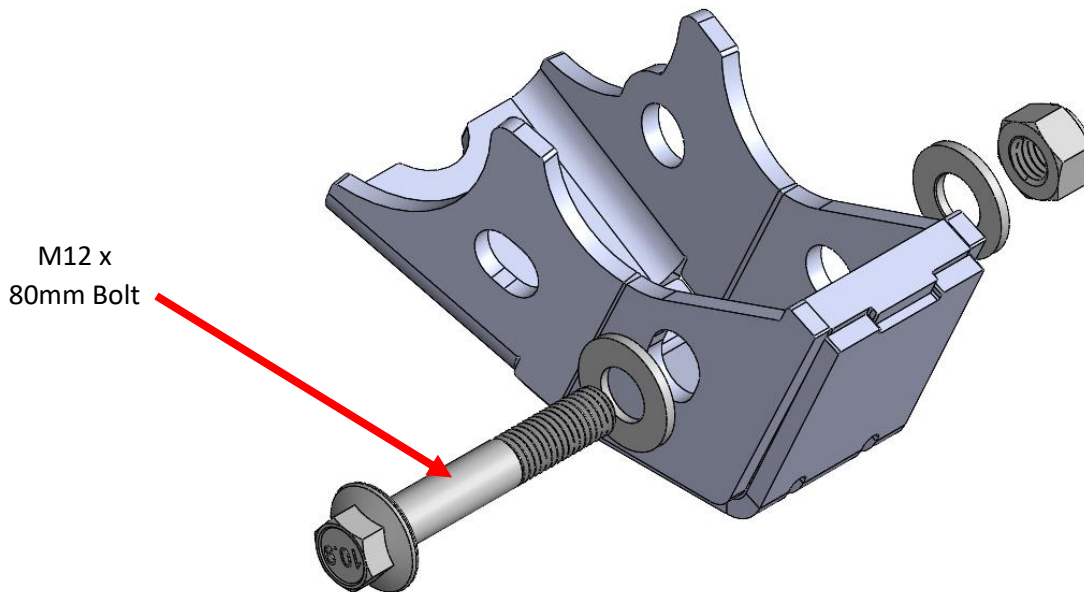


Figure 1

7. Once the bolt is installed correctly, loosely thread on a M12 Nylock nut with a 1/2" Washer.
8. Next install the M8 x 80mm bolt with a 5/16" Washer in the uppermost mounting location in the same orientation as the shock bolt. Loosely thread a M8 Nylock nut with a 5/16" Washer once the bolt is installed.

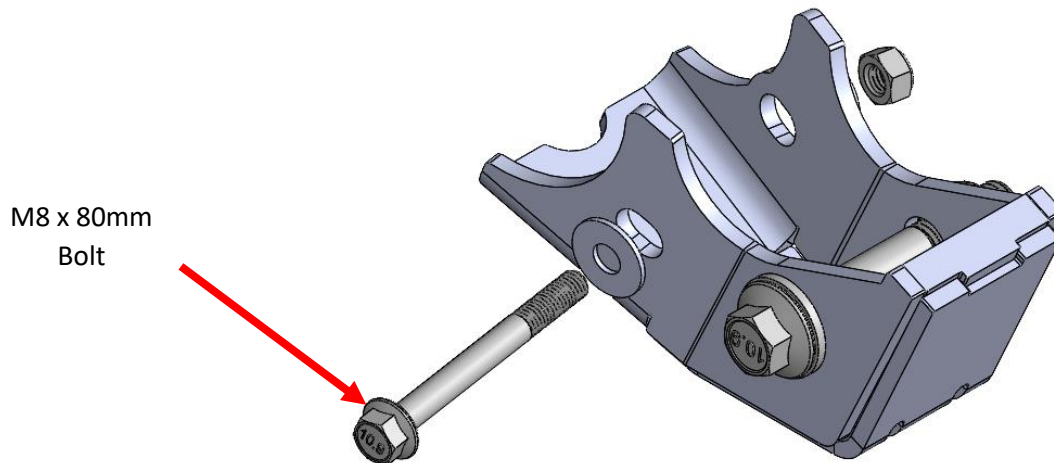


Figure 2

9. Tighten the uppermost bolt first. Hold the skid plate snug to the shock mount while tightening to ensure proper fitment. With the uppermost bolt tight, tighten the lower shock bolt to 74lbf ft.
10. NOTE: If desired both bolts can be mounted in the opposite orientation with the heads of the bolts facing the center of the vehicle.
11. Repeat Steps 2-9 on the opposite side of the vehicle.



Figure 3 Correct Installation of Skid Plate

Enjoy your new RCI protection!



Share your new install with us on social media!
We love seeing our products out in the wild!



www.rcimetalworks.com

sales@rcioffroad.com

970-797-3089

REV: 1 | 9/29/2022



Disclaimer: The products sold by RCI Metalworks are intended for off –road use only, should not be modified, and are for use only on the vehicle(s) specifically stated. RCI Metalworks makes no warranties express or implied, including of fitness for a particular purpose or merchantability. RCI Metalworks will not be liable for any damages arising out of the use or misuse of its products. It is the customers' responsibility to ensure the products are safely and properly attached to the vehicle, and all products should be installed by trained professionals. We strive to maintain extremely high quality standards; however, all RCI Metalworks products are individually handcrafted, may vary slightly, and may contain minor imperfections. Due to the nature of raw aluminum, the material may have minor scratches and other blemishes caused by the manufacturing process, especially on the back side of product. RCI Metalworks is constantly seeking to improve its products and reserves the right to make changes to any product.