

RCI Engine Skid Plate Install Guide

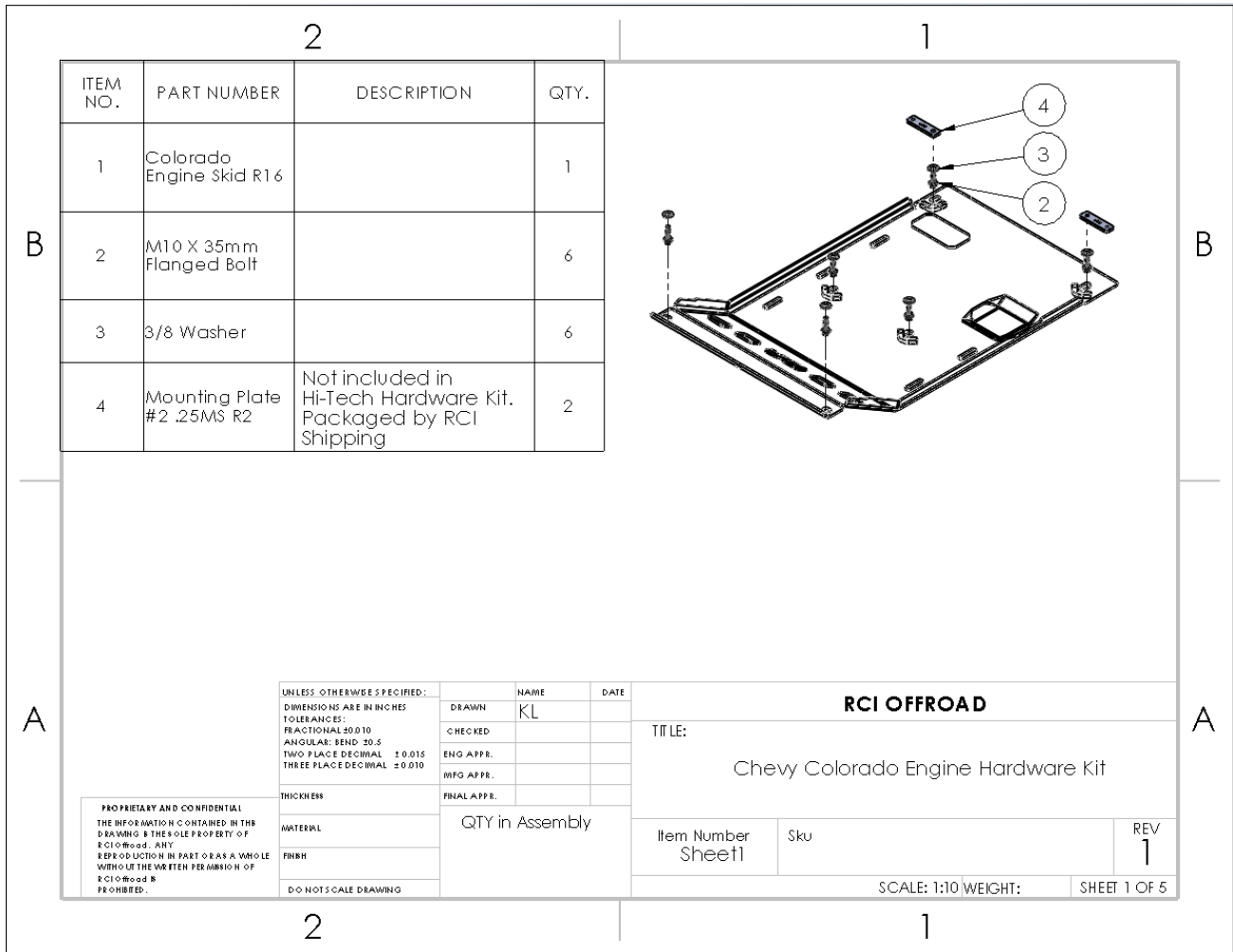


Figure 1: Assembly with hardware

Installation Steps:

1. Begin by unpacking and removing all components and hardware. Please verify that all hardware, components, and mounting components are present. Please reference your original order invoice and verify all items are accounted for.
 - a. If applicable, remove OEM skid plates before beginning installation of RCI Skid Plates.
2. Lift the RCI Engine Skid Plate up to the vehicle, aligning the front mounting slots with the holes present on the vehicle.
 - a. The vehicle mounting locations are present on the lower radiator support, just behind the vehicle's bumper/air dam



3. Loosely install 2 sets of 3/8" Washers and M10x35mm mounting bolts to secure the front of the skid plate.
4. Loosely install 2 sets of 3/8" Washers and M10x35mm mounting bolts in the two central mounting holes of the skid plate.
5. Insert one "Mounting Plate 2" into each side of the crossmember.
 - a. The mounting plates are marked with the text "MP2" for "Mounting Plate 2". There is a smaller, non-threaded hole on one end of the plate and a larger, threaded hole on the opposite end. Take special care to install the MP2's with the threaded hole aligning with the hole in the vehicle's crossmember.
 - b. The MP2's will be inserted into the central crossmember. This crossmember can be identified as the rear mounting point for the vehicle A-arms.
 - c. The MP2's are mounted to the outside of the crossmember for visualization purposes only. Install the MP2's inside the crossmember in the shown orientations.



6. With the MP2's aligned with the RCI Engine Skid Plate's rearmost mounting locations, secure the skid plate with two(2) sets of 3/8" washers and M10x35mm mounting bolts as shown in the picture above.
 - a. If installing an RCI Transmission Skid Plate with the RCI Engine Skid Plate, leave approximately 1/2" of space between the crossmember and the RCI Engine Skid Plate. Skip step 7 and proceed to the RCI Transmission Skid Plate Install Guide.
7. Revisit all installed hardware and fully tighten all hardware in the order that they were installed.

Enjoy your new RCI 15+ Colorado Engine Skid Plates!



Share your new install with us on social media!

We love seeing our products out in the wild!

www.rcimetalworks.com

sales@rcioffroad.com

970-797-3089



Disclaimer: The products sold by RCI Metalworks are intended for off-road use only, should not be modified, and are for use only on the vehicle(s) specifically stated. RCI Metalworks makes no warranties express or implied, including of fitness for a particular purpose or merchantability. RCI Metalworks will not be liable for any damages arising out of the use or misuse of its products. It is the customers' responsibility to ensure the products are safely and properly attached to the vehicle, and all products should be installed by trained professionals. We strive to maintain extremely high quality standards; however, all RCI Metalworks products are individually handcrafted, may vary slightly, and may contain minor imperfections. Due to the nature of raw aluminum, the material may have minor scratches and other blemishes caused by the manufacturing process, especially on the back side of product. RCI Metalworks is constantly seeking to improve its products and reserves the right to make changes to any product.