

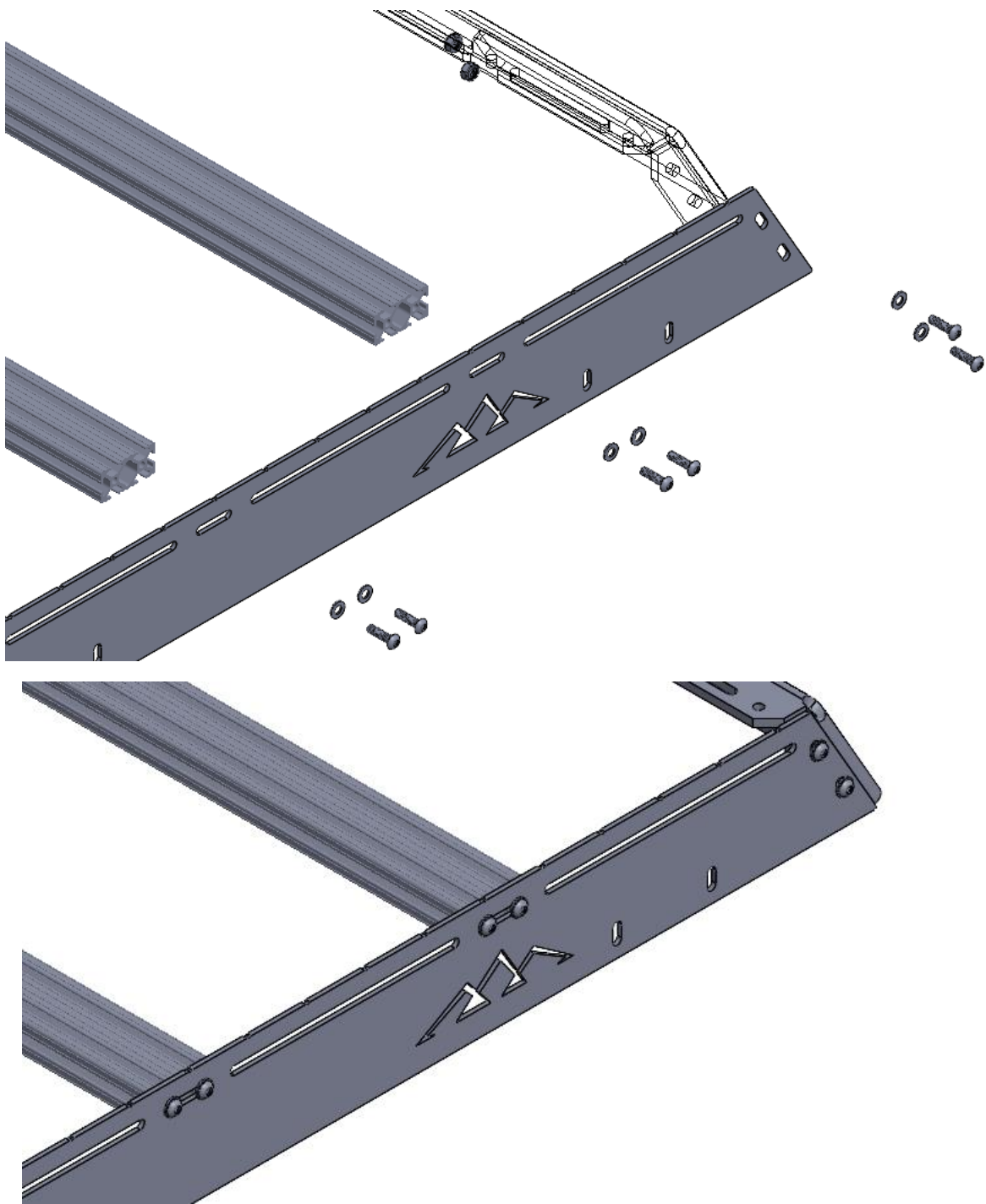
# RCI Bronco 4Door Roof Rack Install Guide

| ITEM NO. | PART NUMBER                               | QTY. |
|----------|---|------|
| 1        | Side Panel - Rear Driver                  | 1    |
| 2        | Side Panel - Rear Passenger               | 1    |
| 3        | Side Panel - Front                        | 2    |
| 4        | Side Panel - Front Insert                 | 2    |
| 5        | 0.125AL Curved Front Fairing R7           | 1    |
| 6        | 0.125AL Front to Rear Bracket R3          | 4    |
| 7        | 0.25AL Rear Fairing R9                    | 1    |
| 8        | Bronco Roof Rack front mount Passenger    | 1    |
| 9        | MirrorBronco Roof Rack front mount Driver | 1    |
| 10       | 0.25AL Side Panel Insert Mount R5         | 14   |
| 11       | 0.135MS Rear Front Inner Mount R2         | 2    |
| 12       | 0.135MS Rear Front Outer Mount R2         | 2    |
| 13       | 0.135MS Rear Rear Inner Mount R2          | 2    |
| 14       | 0.135MS Rear Rear Outer Mount R2          | 2    |
| 15       | Aluminum T-Slot R.2                       | 9    |
| 16       | 1/4" Black Flat Washer                    | 92   |
| 17       | 1/4-20 Nut With Lock Washer               | 52   |
| 18       | 1/4-20 x 0.875 Button Head                | 88   |
| 20       | Rubber Roof Rack Mount Pad                | 4    |
| 21       | Front Fairing Weather Stripping           | 1    |
| 22       | 1/4-20 x 0.75" Carriage Bolt              | 4    |
| 23       | 1/4"-20 Nyloc Nut                         | 4    |

| <b>RCI OFFROAD</b>                  |     |          |               |
|-------------------------------------|-----|----------|---------------|
| TITLE:<br>Bronco Roof Rack - 4 Door |     |          |               |
| Item Number<br>BOM                  | Sku | REV<br>1 |               |
| SCALE: 1:20                         |     | WEIGHT:  | SHEET 1 OF 23 |

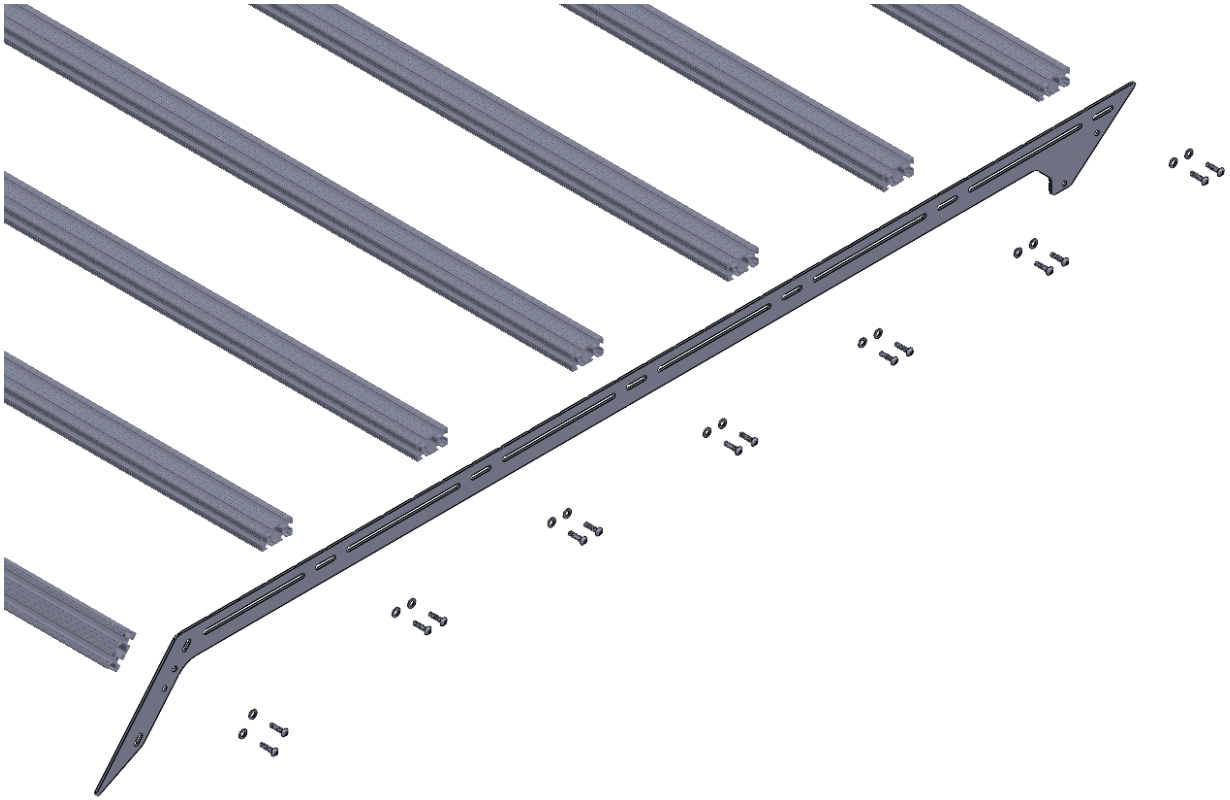
\*\*Use hand tools, impact wrenches may cause damage if over torqued.

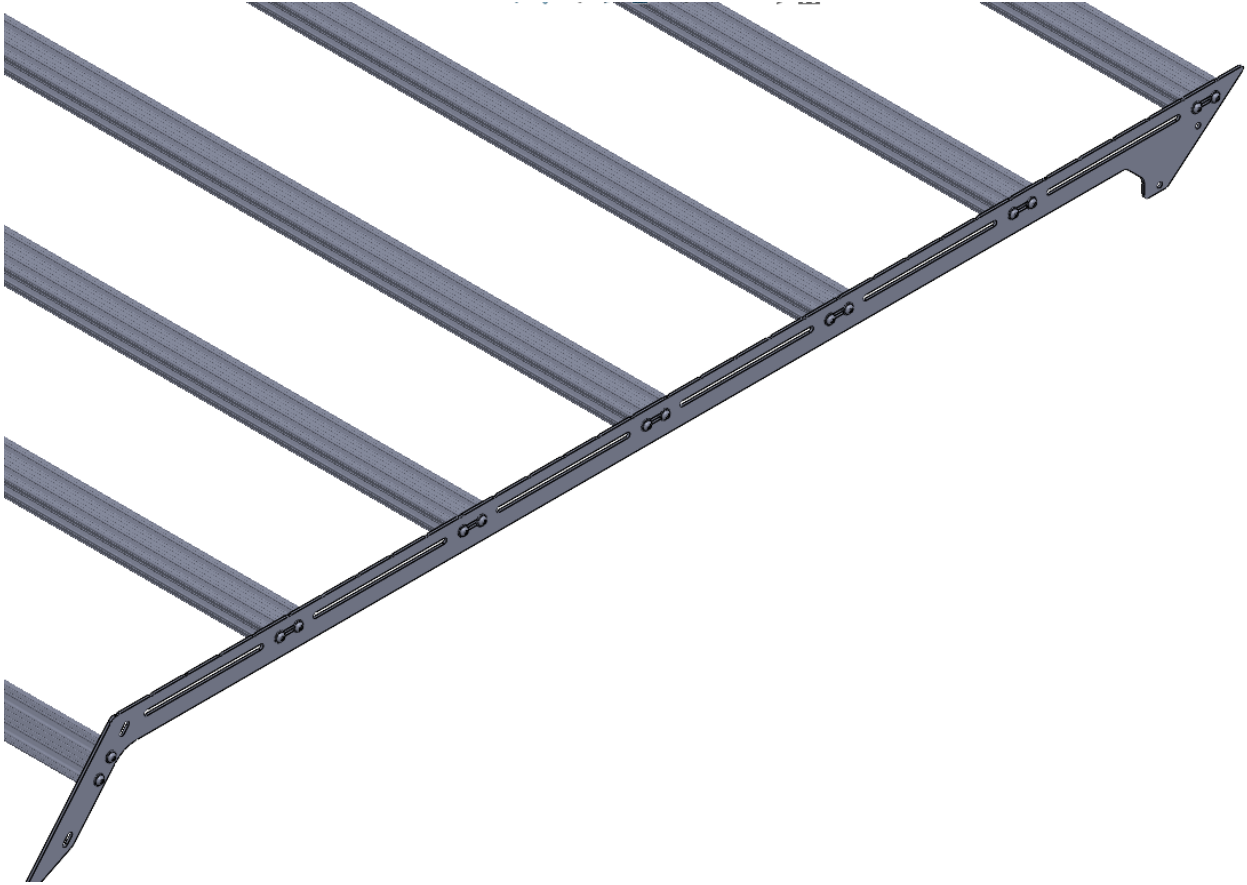
1. On the ground, lay out two (2) of the 47" Aluminum T-Slot cross bars (15), Rear Fairing (7) and the rear driver (1) / passenger (2) side panels with the mountains facing the correct direction. Using twelve (12) 1/4-20 button head screws (18) and washers (16) and four (4) 1/4-20 nuts (17), secure the Aluminum T-Slot cross bars (15) and Rear Fairing to the rear side panels (1/2).
  - a. By default, the Aluminum T-Slot cross bars (15) should be mounted to the two smaller oval cutouts in the rear side panels. However, they may need to be shifted to other positions to accommodate third party accessories.
  - b. It is recommended to install the T-slot cross bars (15) with the slot opening facing upwards and on the same side of the vehicle (Driver or Passenger) for easier accessory installation.
  - c. It is recommended that the T-Slot cross bars (15) and Rear Side Panels (1/2) are assembled on a soft surface such as a large blanket to minimize the risk of accidental scratches.



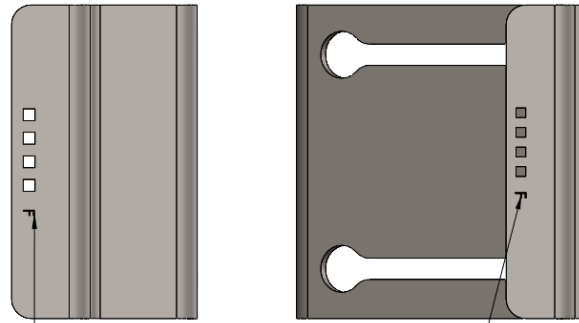
2. On the ground, lay out seven (7) of the 47" Aluminum T-Slot cross bars (15) and the Front Driver / Passenger Side Panels (3). Using twenty-eight (28) 1/4-20 button head screws (18) and washers (16), secure the Aluminum T-Slot cross bars (15) to the Front Side Panels (1/2).

- a. By default, the Aluminum T-Slot cross bars (15) should be mounted to the two smaller oval cutouts in the rear side panels. However, they may need to be shifted to other positions to accommodate third party accessories.
- b. It is recommended to install the T-slot cross bars (15) with the slot opening facing upwards and on the same side of the vehicle (Driver or Passenger) for easier accessory installation.
- c. It is recommended that the T-Slot cross bars (15) and Front Side Panels (3) are assembled on a soft surface such as a large blanket to minimize the risk of accidental scratches.

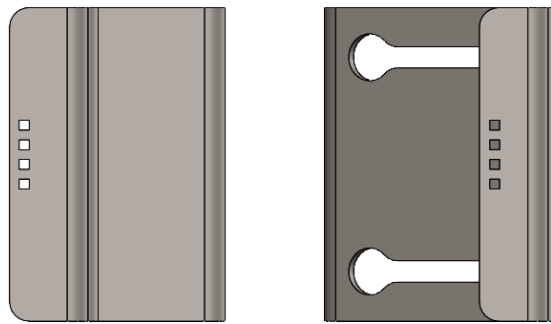




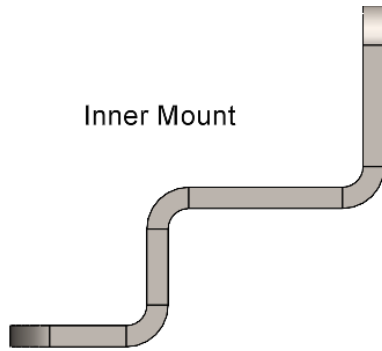
3. With the assistance of a friend, place the rear rack subassembly from step 1 on the rear of the vehicle's roof. Loosely secure the rear rack subassembly to the roof using the "Rear Front" Inner and Outer Mounts (13,14), "Rear Rear" Inner and Outer Mounts (11,12), eight (8) 1/4-20 screws (18), washers (16), and nuts (17). While installing the rear mounts, lift the rack slightly to fully seat the Outer Mounts against the upper mounting surface present on the vehicle's roof. There should be an approximately 1/4" gap between the bottom of the rack and the top surface of the roof.
  - a. Before installing, adhere the adhesive rubber strips to the bottom of all four (4) inner mounts
  - b. The rear rack subassembly should still be able to shift forwards and backwards within the rooftop slots.
  - c. "Rear Front" and "Rear Rear" Mounts are not interchangeable. If holes on mount and Rear Side Panel do not align, try the other set of mounts.



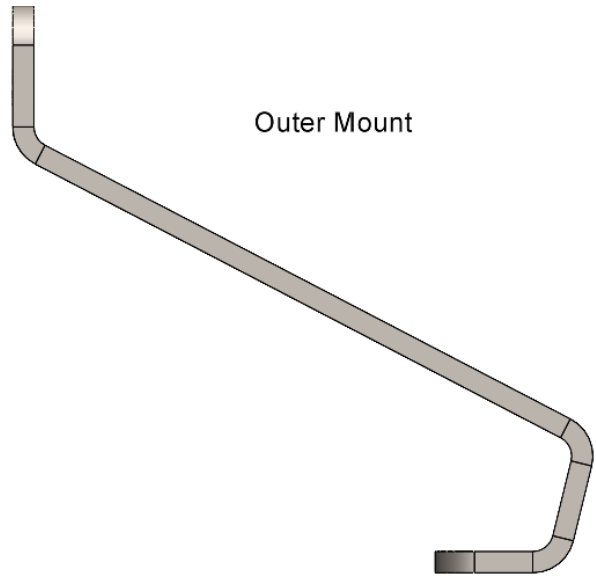
"Rear Front" Mounts marked with "F"



Inner Mount



Outer Mount

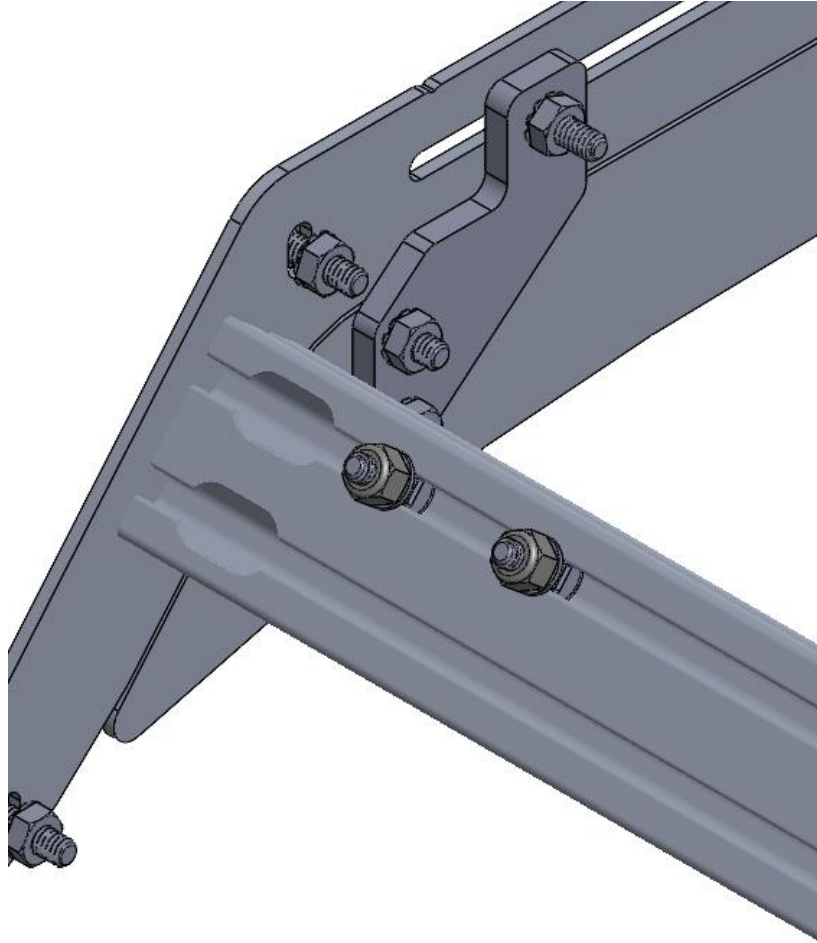


Adhesive Rubber Pad



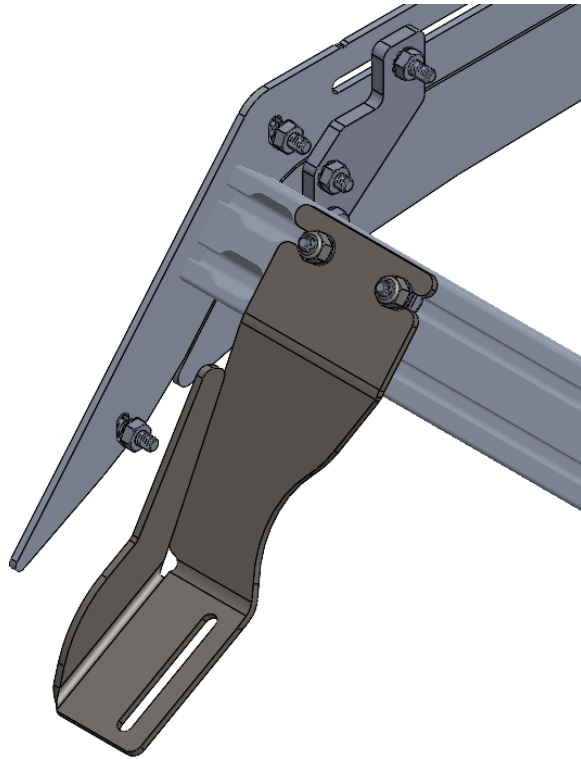
4. Install the Front Mounts (9,8) to the "Accessory Ready" mounting locations at the front of the vehicle above the windshield by removing the body-colored cover, removing the factory nuts, replace the black plastic mount with the included Front Mounts (9,8), and reinstall the factory nuts to secure the Front Mounts (9,8).
  - a. The Front Mounts should be installed in their highest position. The Front Mounts may be lowered after the front rack subassembly is installed to adjust the size of the gap between the rack and the roofline of the vehicle.

- b. Use extreme caution when tightening the hardware to secure the Front Mounts. Overtightening the nuts may cause the factory “Accessory Ready” mounts to shear. Use hand tools to tighten to Ford’s torque recommendations.**
5. Loosely install four (4) 1/4-20 x 1” Carriage Bolts(22), 1/4" Washers(16), and 1/4" Nyloc Nuts(23) in the front-most aluminum extrusion Crossbar (15).

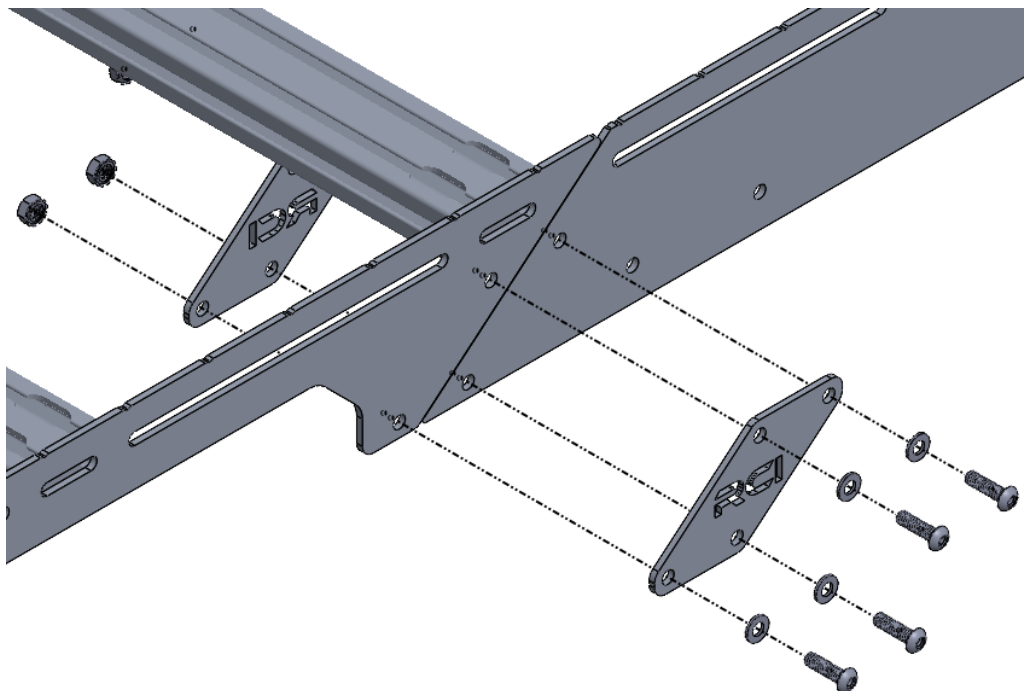


*Carriage Bolts, Nuts, and Washers installed loosely*

6. With the assistance of a friend, lift the front rack subassembly on to the front of the vehicle’s roof. Align the front-most aluminum extrusion crossbar with the installed Front Mounts on the vehicle.
- The Front Mounts should rest on the front/top face of the front-most aluminum extrusion crossbar and the slots in the Front Mounts should align with the higher of the two extrusion slots.



7. Slide the T-slot nuts and Flanged Button Head Screws from step 6 into the slots of the Front Mounts and tighten to secure the front of the front rack subassembly.
8. Align the rear of the front rack subassembly and the front of the rear rack subassembly. Using the four included Front to Rear Brackets (6), eight (8) 1/4-20 screws (18), washers (16), and nuts (17), secure the front and rear subassemblies together.





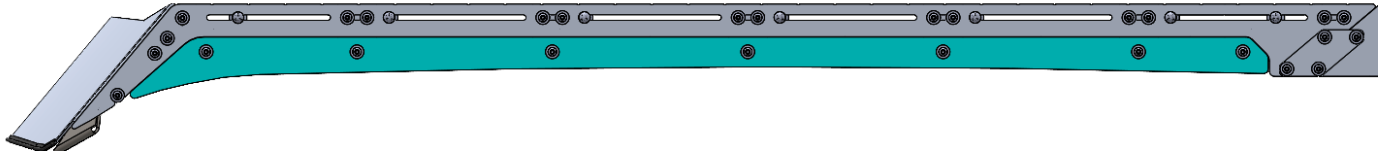
9. With the front and rear subassemblies securely connected, tighten the hardware from step 4 to finish mounting the rear of the roof rack assembly.
10. Install front fairing weather strip (21) on the bottom edge of the front fairing.
  - a. A decent amount of pressure is required to seat the weather strip properly.
  - b. Some trimming will be required to get the weather stripping to match the exact width of the front fairing.



11. Install the Front Fairing (5) with the use of four (4) 1/4-20 bolts (18), washers (16), and nuts (17).
  - a. The Front Fairing is designed to bow out towards the front of the vehicle to match the roofline. Because of this, the Front Fairing as it is shipped is slightly wider than the roof rack itself. For proper installation, it is recommended to loosely secure one side (either Passenger or Driver) to the rack assembly, then gently pushing the opposite side into position. Loosely secure both sides.
  - b. Before completely tightening the Front Fairing hardware, push the front fairing to its lowest position. The entire front edge of the Front Fairing should be contacting the roofline of the vehicle.
    - i. Failure to properly install the Front Fairing may result in undesired fluttering and noise while driving.



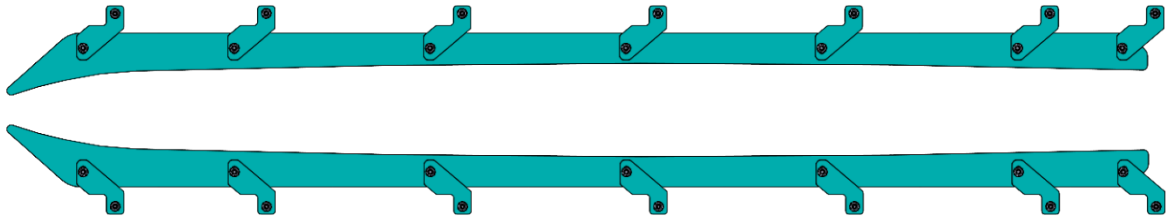
## Installing the Front Filler Panel



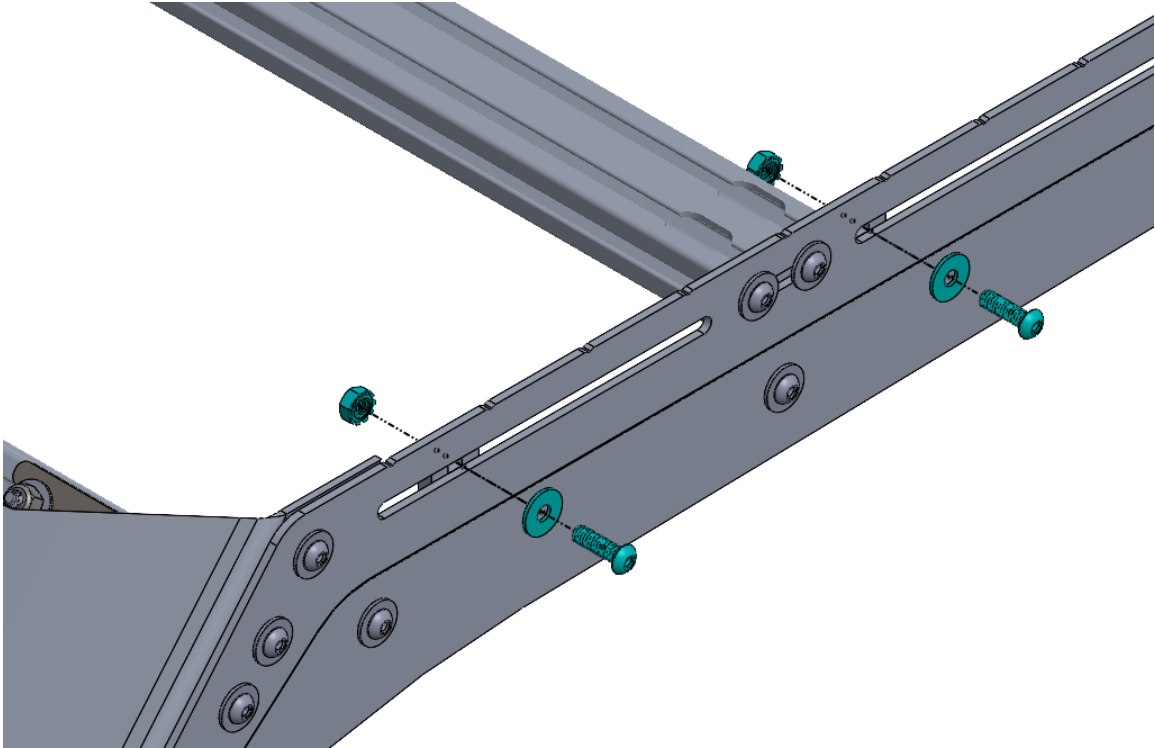
1. Loosely install seven (7) Insert Panel Mounts (10) on the Front Insert Panel (4) using seven (7) 1/4" Button Head Screws (18), Washers (16), and Nuts (17).
  - a. The Insert Panel Mounts (10) should be angled towards the flat end of the Front Insert Panel (4) as shown:



2. Repeat the process for the opposite side so that both subassemblies are mirrored as shown:



3. Place one of the Insert Panel Subassemblies in position within the Front Side Panel.
  - a. The Insert Panel mounts should be positioned on the inside of the rack so that they are not visible from the sides of the vehicle.
  - b. To get the Insert Panel Subassembly into position, it may be helpful to turn the subassembly 90 degrees so that the inner face of the Insert Panel faces the roof. The Insert Panel can then be slid into the opening in the Front Side Panel and rotated back into its final position after it clears the Front Side Panel.
4. Securing the Insert Panel Subassembly to the Front Side Panel with the use of seven (7) 1/4" Button Head Screws (18), Washers (16), and Nuts (17).



5. Apply upward pressure to the Insert Panel to minimize the gap between the Insert Panel and the Front Side Panel. Continue to apply upward pressure while tightening the hardware securing the Insert Panel to the Insert Panel mounts.
  - a. The goal is to achieve a fitment between the Front Side and Insert Panels that achieves the most even spacing between the two components.
6. Repeat steps 3-5 for the opposite side of the roof rack.

**Share your new install with us on social media!**  
**We love seeing our products out in the wild!**



*Enjoy the new roof rack!!!*

---

Disclaimer: The products sold by RCI Metalworks are intended for off-road use only, should not be modified, and are for use only on the vehicle(s) specifically stated. RCI Metalworks makes no warranties express or implied, including of fitness for a particular purpose or merchantability. RCI Metalworks will not be liable for any damages arising out of the use or misuse of its products. It is the customers' responsibility to ensure the products are safely and properly attached to the vehicle, and all products should be installed by trained professionals. We strive to maintain extremely high quality standards; however, all RCI Metalworks products are individually handcrafted, may vary slightly, and may contain minor imperfections. Due to the nature of raw aluminum, the material may have minor scratches and other blemishes caused by the manufacturing process, especially on the back side of product. RCI Metalworks is constantly seeking to improve its products and reserves the right to make changes to any product.