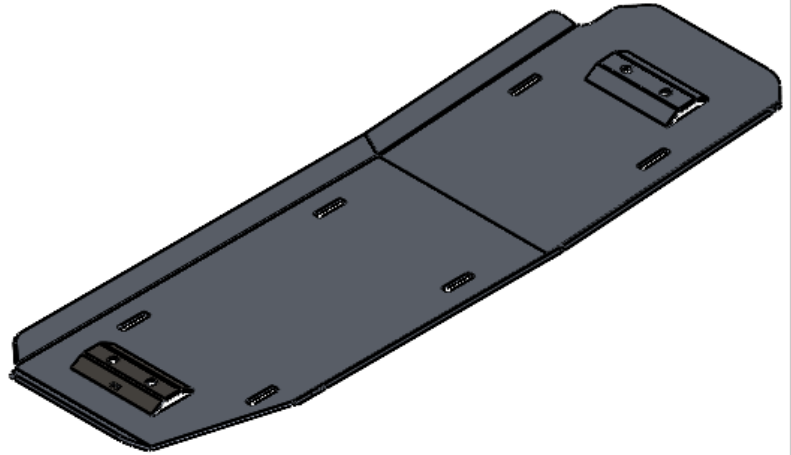


RCI 19+ Ford Ranger FUEL TANK SKID PLATE INSTALLATION GUIDE

****This install guide is applicable to our Ford Ranger Fuel Tank Skid Plate ONLY****

ITEM NO.	PART NUMBER	DESCRIPTION	QTY.
1	.135MS .25AL Ranger Fuel Skid R14		1
2	Ranger Fuel Tank Straps	If selected by customer	1 Pair
3	M8x1.25 Nylock Nut	Hardware	4
4	5/16 Steel Flat Washer	Hardware	4



RCI OFFROAD

OFFROAD

INSTALLATION STEPS:

- 1) Begin by unpacking and removing all components and hardware. Please verify that all hardware, components, and mounting components are present. Please reference your original order invoice and verify all items are accounted for.

INSTALLATION STEPS FOR VEHICLES WITH THE FX4 OFFROAD PACKAGE:

- 2) Remove the four(4) M8 nuts securing the factory plastic fuel tank “skid plate” to the factory fuel tank straps. Remove the factory plastic fuel tank “skid plate”.

- 3) Lift the RCI Ranger Fuel Tank Skid Plate up to the factory fuel tank straps. Align the factory fuel tank strap studs with the mounting holes on the RCI Ranger Fuel Tank Skid Plate. Loosely secure the RCI Ranger Fuel Tank Skid Plate to the factory fuel tank strap studs with either the factory hardware or the included M8 nuts and washers.
 - a. Match the orientation shown with the flanges facing up towards the vehicle and the open end of the skid plate facing the rear of the vehicle.

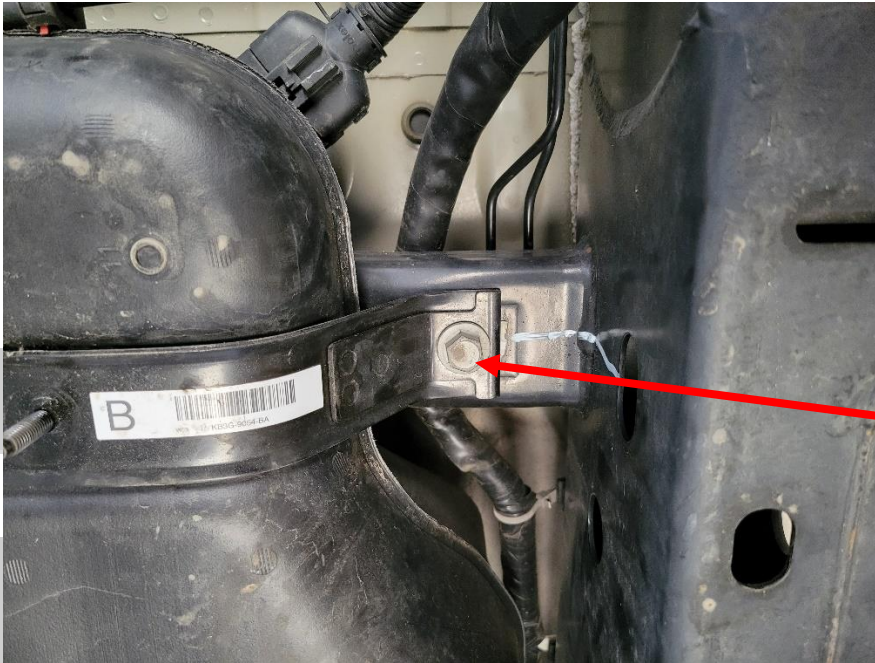


- 4) With the RCI Ranger Fuel Tank Skid Plate loosely secured, adjust the skid plate so that it is centered with respect to the fuel tank. Ensure that the skid plate effectively clears the vehicle chassis and rear brake lines.
- 5) Tighten all hardware to finish securing the RCI Ranger Fuel Tank Skid Plate to the factory fuel tank straps.
 - a. Torque all hardware to match Ford's recommendations.
- 6) Congratulations! Installation of your new RCI Ford Ranger Fuel Tank Skid Plate is now complete!

RCI
OFF ROAD

INSTALLATION STEPS FOR VEHICLES WITHOUT THE FX4 OFFROAD PACKAGE:

- 2) Secure the fuel tank to the vehicle with the use of several ratchet straps or hold in place with floor jack.
- 3) Remove the two bolts securing the fuel tank straps to the vehicle. Both bolts are located on the driver side of the fuel tank. One bolt per fuel tank strap.



Front Fuel Strap
mounting bolt location

a.



Rear Fuel Strap
mounting bolt location

b.

- 4) Swing the fuel tank strap towards the passenger side of the vehicle while lifting upwards to remove each of the straps.
- 5) Replace the factory fuel tank straps with the provided (if optioned) fuel tank straps with skid plate mounting studs.
 - a. To install the replacement straps, hook the passenger side of the strap on the vehicle mounting point, swing towards the driver side of the vehicle towards the fuel tank, and reinstall the bolts to secure the straps. Torque the bolts to match Ford's recommendations.
 - b. With the fuel tank successfully secured to the vehicle with the replacement straps, the ratchet straps or floor jack can now be removed.
- 6) Lift the RCI Ranger Fuel Tank Skid Plate up to the fuel tank straps. Align the fuel tank strap studs with the mounting holes on the RCI Ranger Fuel Tank Skid Plate. Loosely secure the RCI Ranger Fuel Tank Skid Plate to the factory fuel tank strap studs with either the factory hardware or the included M8 nuts and washers.
 - a. Match the orientation shown with the flanges facing up towards the vehicle and the open end of the skid plate facing the rear of the vehicle.



- 7) With the RCI Ranger Fuel Tank Skid Plate loosely secured, adjust the skid plate so that it is centered with respect to the fuel tank. Ensure that the skid plate effectively clears the vehicle chassis and rear brake lines.
- 8) Tighten all hardware to finish securing the RCI Ranger Fuel Tank Skid Plate to the factory fuel tank straps.
 - a. Torque all hardware to match Ford's recommendations.
- 9) Congratulations! Installation of your new RCI Ford Ranger Fuel Tank Skid Plate is now complete!

Share your new install with us on social media!
We love seeing our products out in the wild!

RCI
OFF ROAD

www.rcimetalworks.com

sales@rcioffroad.com

970-797-3089

REV: 1 | 9/29/2022

Created: K



Disclaimer: The products sold by RCI Metalworks are intended for off –road use only, should not be modified, and are for use only on the vehicle(s) specifically stated. RCI Metalworks makes no warranties express or implied, including of fitness for a particular purpose or merchantability. RCI Metalworks will not be liable for any damages arising out of the use or misuse of its products. It is the customers' responsibility to ensure the products are safely and properly attached to the vehicle, and all products should be installed by trained professionals. We strive to maintain extremely high quality standards; however, all RCI Metalworks products are individually handcrafted, may vary slightly, and may contain minor imperfections. Due to the nature of raw aluminum, the material may have minor scratches and other blemishes caused by the manufacturing process, especially on the back side of product. RCI Metalworks is constantly seeking to improve its products and reserves the right to make changes to any product.