

RCI 19+ Ranger Catalytic Guard Install Guide

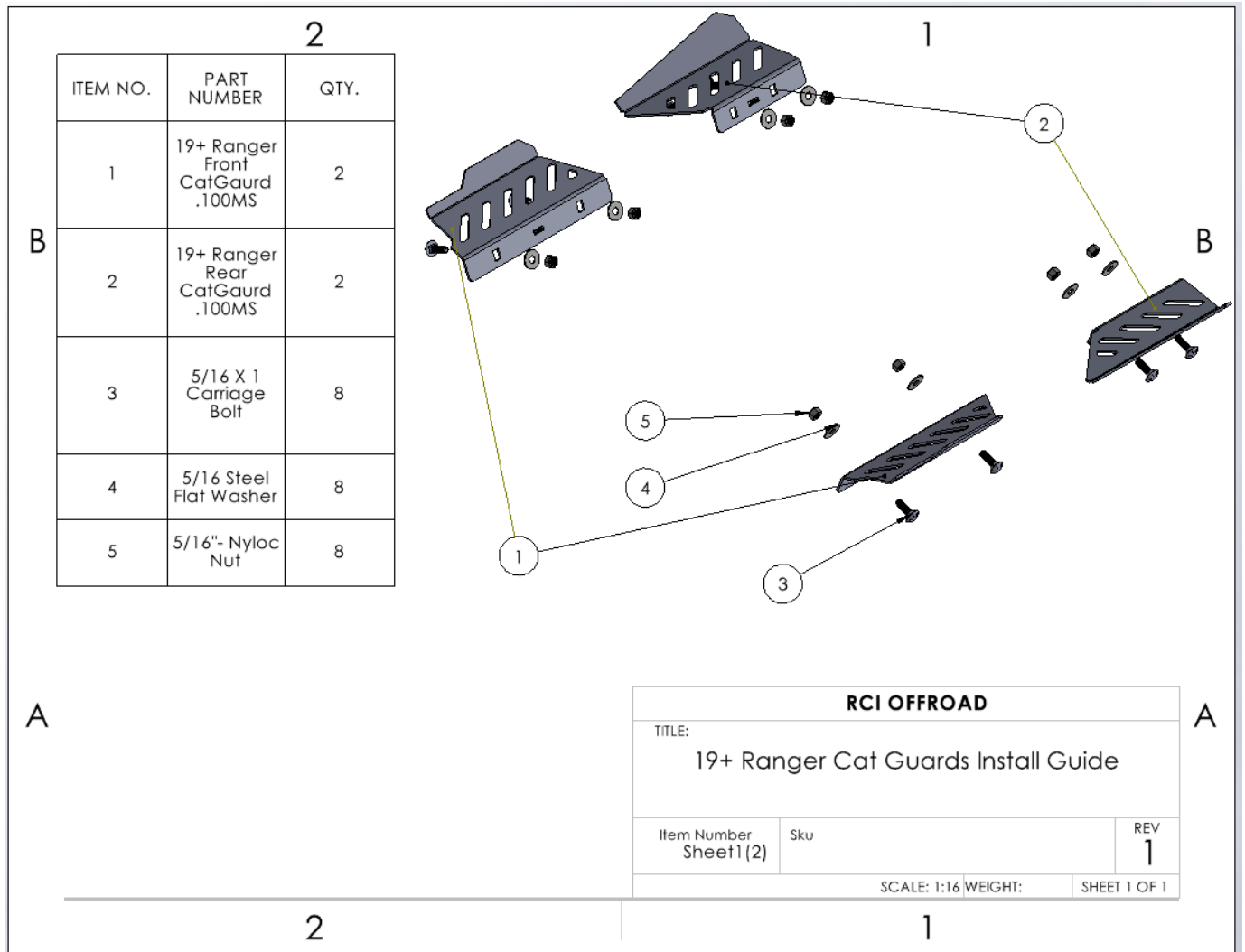


Figure 1: Assembly with hardware

Installation Steps:

1. Begin by unpacking and removing all components and hardware. Please verify that all hardware, components, and mounting components are present. Please reference your original order invoice and verify all items are accounted for.
 - a. **PLEASE NOTE:** An RCI 19+ Ford Ranger Transmission Skid Plate is required for use with this kit, but one is NOT supplied. This guide is relevant to the 19+ Ford Ranger.
2. If an RCI 19+ Ford Ranger Transmission Skid Plate is currently installed on the vehicle, it will need to be removed prior to beginning the installation. The CAT Guards are designed to be theft proof and prohibit mounting or removal while the Transmission skid plate is fully installed.
3. With the transmission skid plate removed from the vehicle, align the Driver Side CAT Guards (#1 & #2) with the square holes on the side flange present on the driver side of the transmission skid plate. The CAT Guards will be installed on the outside of the skid plate. Correct alignment is depicted in Figure 2.

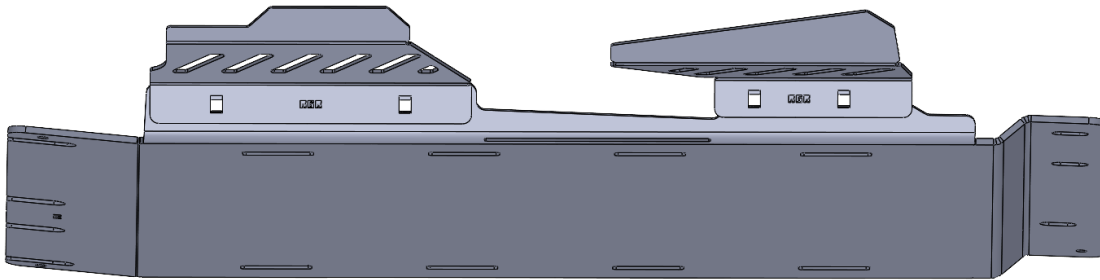
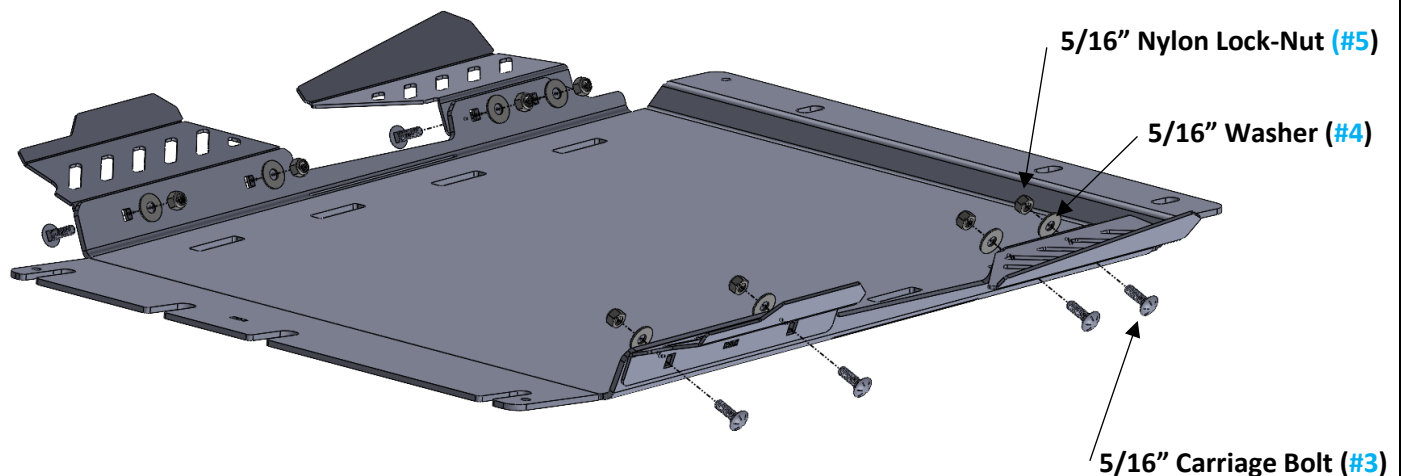


Figure 2 Correct Orientation of Driver CAT Guards



4. With the CAT Guards aligned to the transmission skid plate install one 5/16" Carriage bolt (#3) per mounting location. The threads for each carriage bolt should be facing towards the center of the plate. Attach a 5/16" Washer (#4) and 5/16" Nylon Lock-Nut (#5) to each carriage bolt. Adjust CAT Guards up or down to users' preference for best fitment.



5. Repeat steps 3-4 for the Passenger Side CAT Guards.
6. Fully tighten all 8 mounting locations until the CAT Guards are fully secure to the skid plate.
7. Reinstall 19+ Ford Ranger transmission skid plate with the newly installed Catalytic Guards.

Enjoy your new RCI 19+ Ranger Catalytic Guards!

Share your new install with us on social media!

We love seeing our products out in the wild!

www.rcimetalworks.com

sales@rcioffroad.com

970-797-3089



Disclaimer: The products sold by RCI Metalworks are intended for off-road use only, should not be modified, and are for use only on the vehicle(s) specifically stated. RCI Metalworks makes no warranties express or implied, including of fitness for a particular purpose or merchantability. RCI Metalworks will not be liable for any damages arising out of the use or misuse of its products. It is the customers' responsibility to ensure the products are safely and properly attached to the vehicle, and all products should be installed by trained professionals. We strive to maintain extremely high quality standards; however, all RCI Metalworks products are individually handcrafted, may vary slightly, and may contain minor imperfections. Due to the nature of raw aluminum, the material may have minor scratches and other blemishes caused by the manufacturing process, especially on the back side of product. RCI Metalworks is constantly seeking to improve its products and reserves the right to make changes to any product.