

RCI 19+ Ranger T-case Skid Plate Install Guide

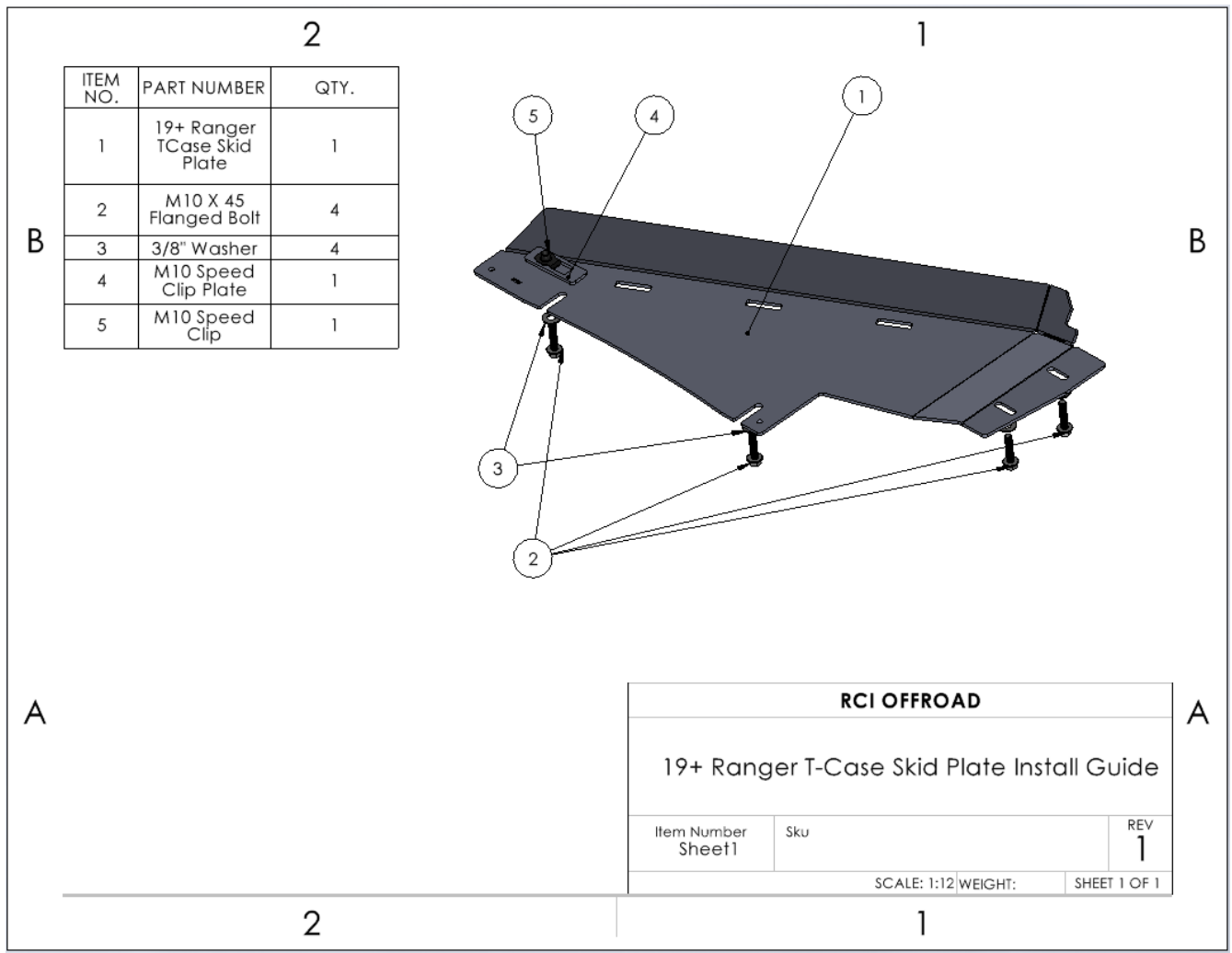


Figure 1: Assembly with hardware

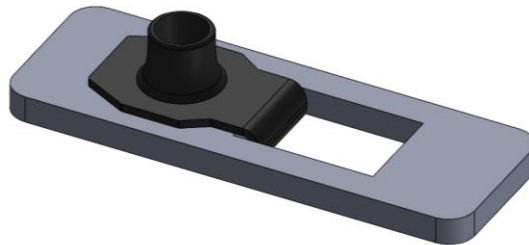
Installation Steps:

1. Begin by unpacking and removing all components and hardware. Please verify that all hardware, components, and mounting components are present. Please reference your original order invoice and verify all items are accounted for.
 - a. If installing an RCI Ranger Transmission Skid Plate with the T-case Skid Plate, install the transmission skid before the t-case skid.
 - b. The RCI T-case Skid Plate is designed to mount between the crossmember and the RCI Transmission Skid Plate
2. If applicable, remove the factory t-case skid plate from the underside of the vehicle.



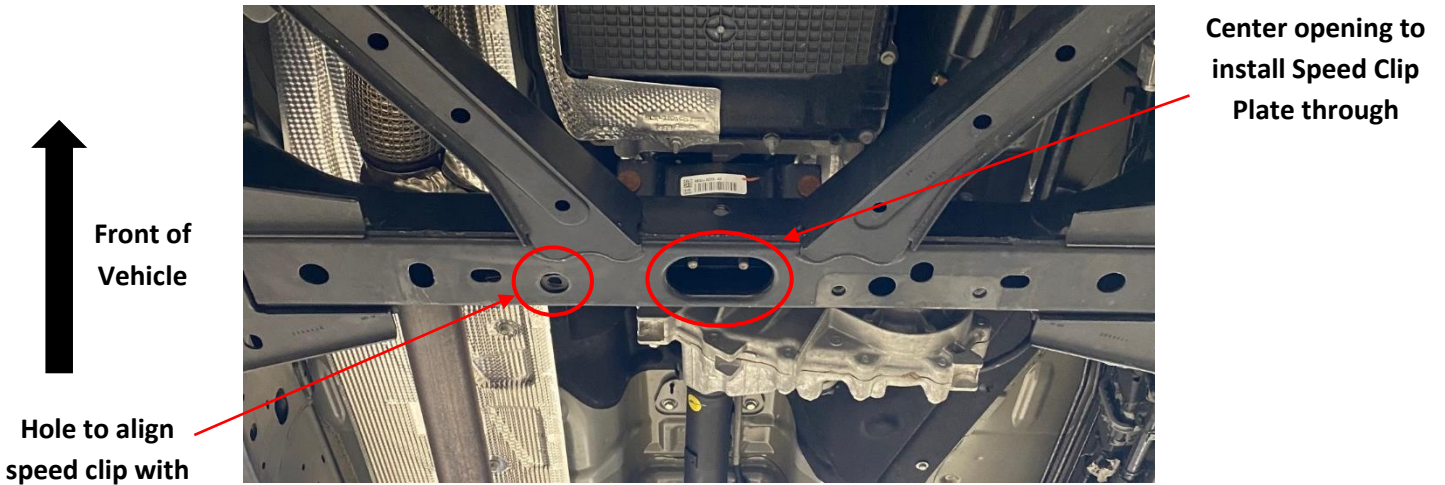
**OEM skid
plate to be
removed**

3. Next prepare the frontmost mounting locations by installing the M10 Speed Clip (#5) on the Speed Clip Plate (#4).

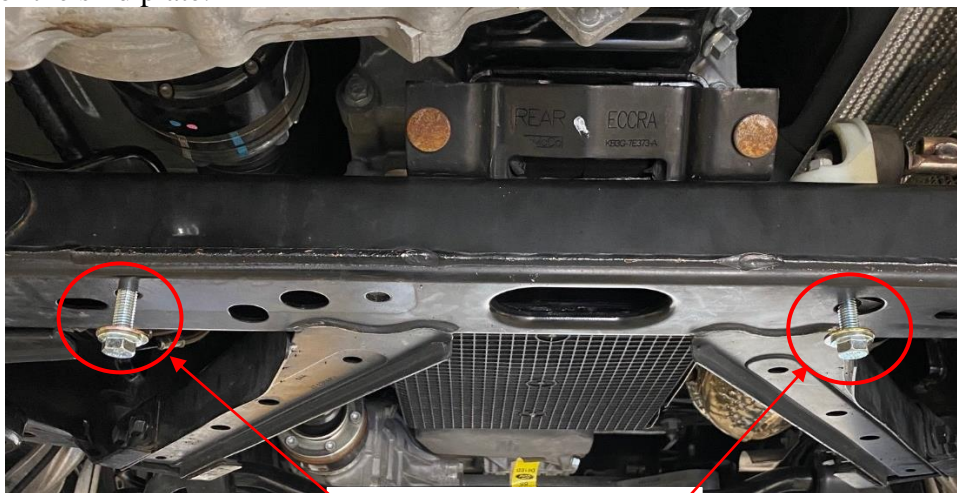


**Correct installation
of M10 speed clip on
speed clip plate**

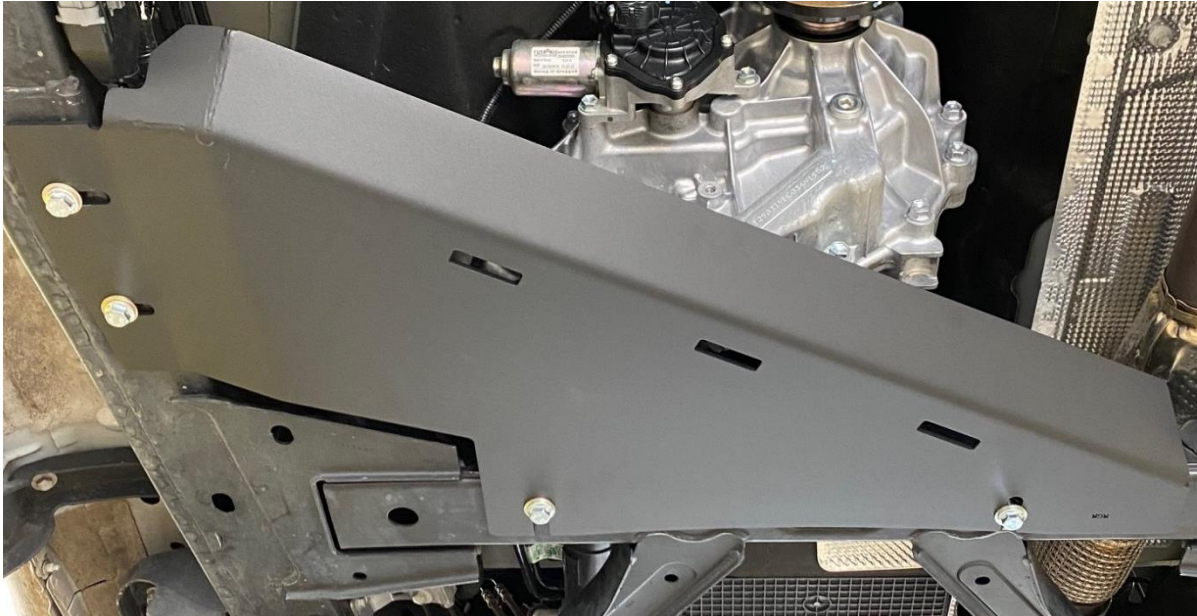
4. Install the Speed Clip Plate through the center of the rearmost crossmember to align with the hole closest to the center opening on the passenger side of the vehicle. Be sure to install the plate in the orientation depicted below.



5. Loosely install 2 (two) of the M10x45mm bolts (#2) with 3/8" washers (#3) in the frontmost mounting points. Lift the skid plate into place by aligning the partially installed bolts with the slots on the front of the skid plate.



6. While the skid is being held by the front bolts, lift the rear of the skid to align with the mounting locations on the driver side of the vehicle. Use 2 (two) of the M10x45mm bolts (#3) with 3/8" washers (#4) to loosely install the skid plate.



Correct Installation of Transmission Skid

7. With all the bolts in place adjust the placement of the skid to users' preference and fully tighten all 4 (four) bolts.

Enjoy your new RCI 19+ Ranger T-case Skid Plate!

Share your new install with us on social media!

We love seeing our products out in the wild!

www.rcimetalworks.com

sales@rcioffroad.com

970-797-3089



Disclaimer: The products sold by RCI Metalworks are intended for off-road use only, should not be modified, and are for use only on the vehicle(s) specifically stated. RCI Metalworks makes no warranties express or implied, including of fitness for a particular purpose or merchantability. RCI Metalworks will not be liable for any damages arising out of the use or misuse of its products. It is the customers' responsibility to ensure the products are safely and properly attached to the vehicle, and all products should be installed by trained professionals. We strive to maintain extremely high quality standards; however, all RCI Metalworks products are individually handcrafted, may vary slightly, and may contain minor imperfections. Due to the nature of raw aluminum, the material may have minor scratches and other blemishes caused by the manufacturing process, especially on the back side of product. RCI Metalworks is constantly seeking to improve its products and reserves the right to make changes to any product.