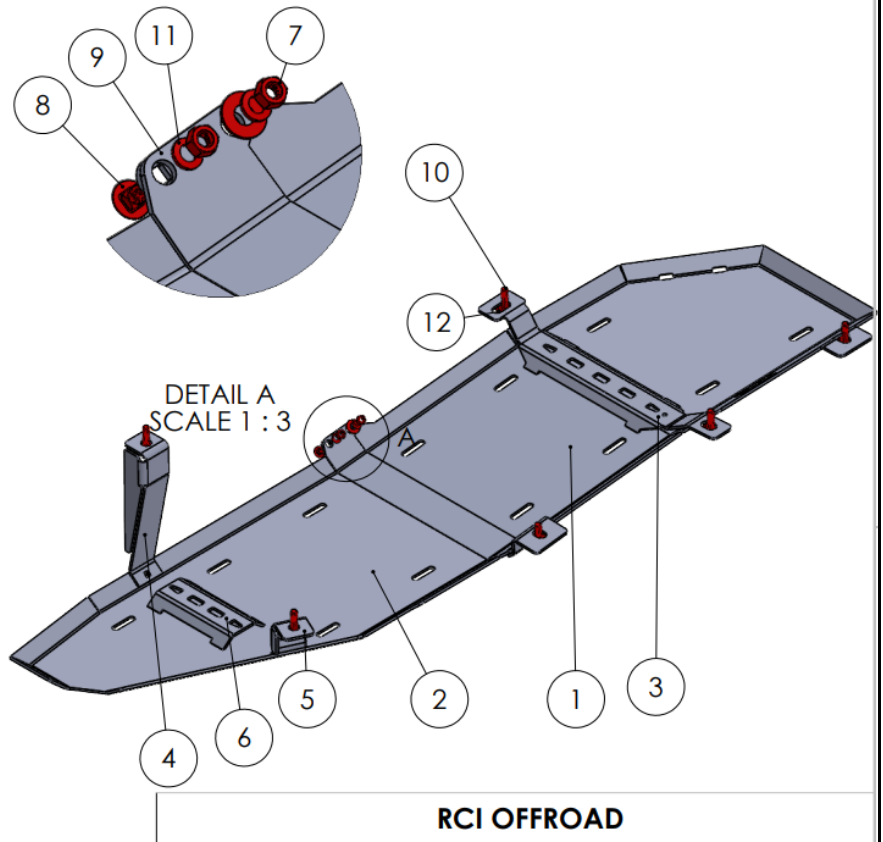


# RCI FORD BRONCO FUEL TANK SKID PLATE INSTALLATION GUIDE

**\*\*This install guide is applicable to our Ford Bronco Fuel Tank Skid Plate ONLY\*\***

ITEM NO.	PART NUMBER	DESCRIPTION	QTY.
1	Fuel Tank R12-Front		1
2	Fuel Tank R9-Rear		1
3	Fuel Tank R13-Front Locating Hump	Welded To Fuel Tank - Front	1
4	Fuel Tank R9-Rear Driver Mount		1
5	Fuel Tank R9-Rear Passenger Mount		1
6	Fuel Tank R7-Rear Locating Hump	Welded to Fuel Tank - Rear	1
7	3/8 Hex Nut	Hardware	6
8	3/8" x 1" Carriage Bolt	Hardware	6
9	3/8 Washer	Hardware	6
10	M12 x 1.75 x 40mm Bolt	Hardware	6
11	3/8 Split Washer	Hardware	6
12	1/2" Washer	Hardware	6

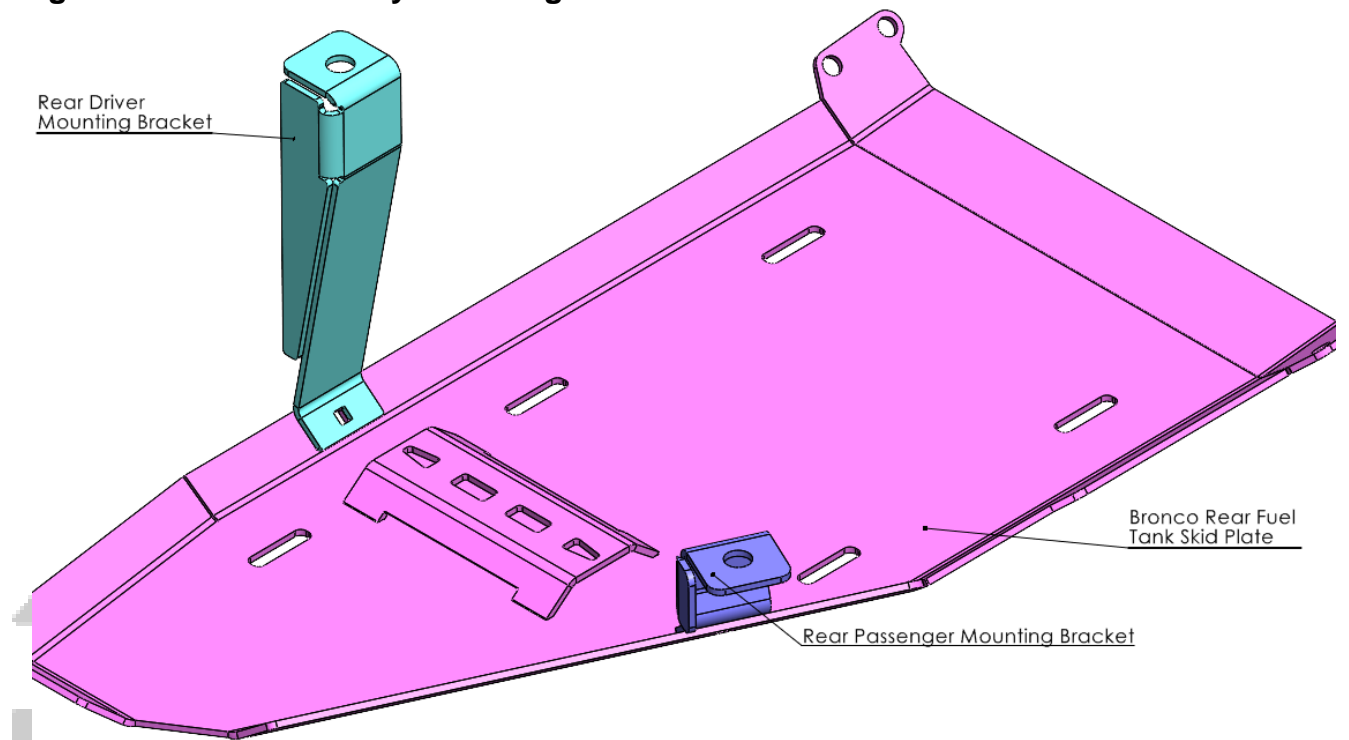


## **OFF ROAD**

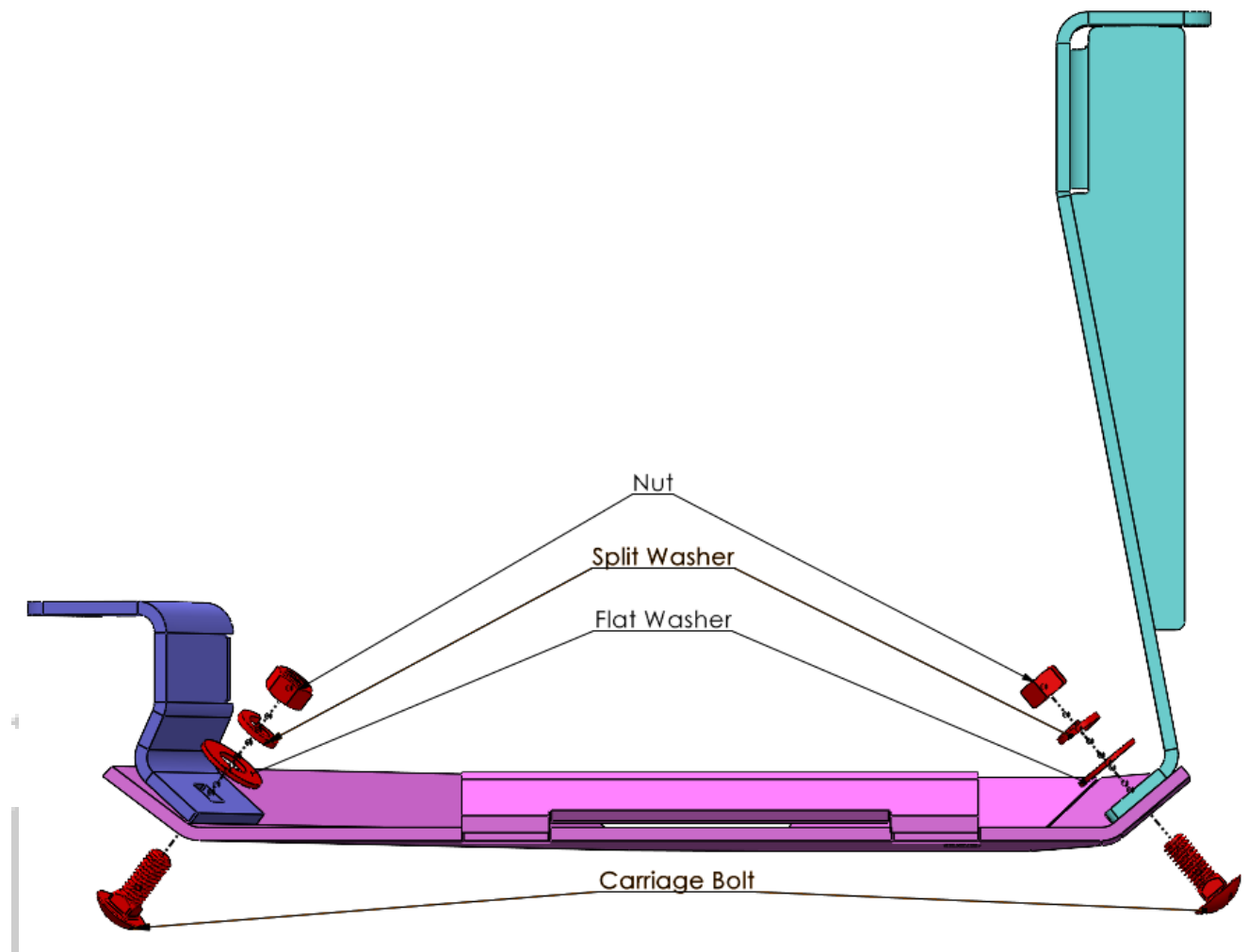
### INSTALLATION STEPS:

- 1) **Begin by unpacking and removing all components and hardware. Please verify that all hardware, components, and mounting components are present. Please reference your original order invoice and verify all items are accounted for.**
  - a. **Please note that our Bronco Fuel Tank skid plate mounts further from the vehicle and “below” our Bronco Rock Sliders. If installing both, please install the Rock Sliders before installing the Fuel Tank skid plate.**
  - b. **RCI’s Bronco Fuel Tank Skid Plate is designed to secure the fuel tank without the need for additional securing devices. Using a set of ratchet straps, secure the fuel tank to the vehicle before removing either the factory fuel straps or factory fuel tank skid plate. The ratchet straps will be removed following the installation of the RCI skid plate.**

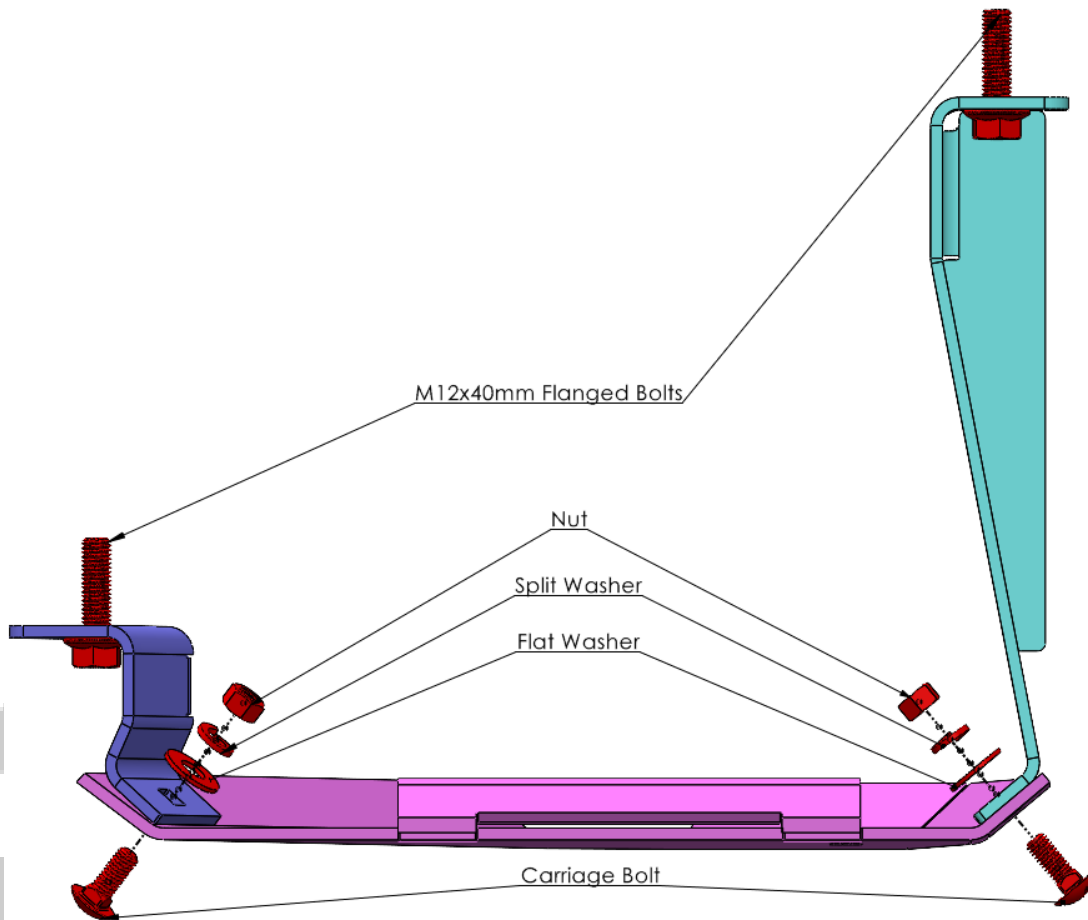
- 1) Loosely mount the Rear Passenger (#5), Rear Driver (#4) Mounting Brackets using two (2) of each of the 3/8" Carriage Bolts (#8), Washer (#9), Split Washer (#11), and Hex Nut (#7). The mounts should still be able to rotate and shift slightly to allow for easier alignment with the factory mounting locations.



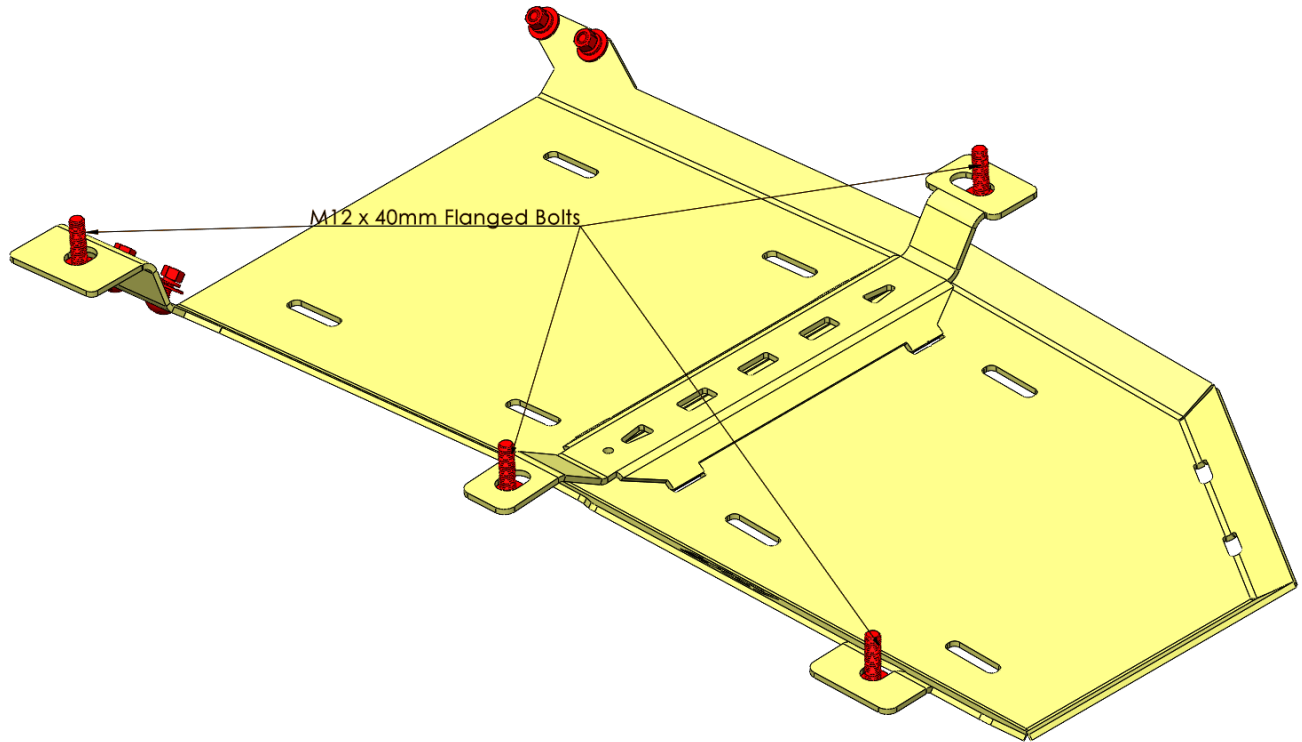
TRUCK  
OFF ROAD



- 2) Lift the Rear Fuel Tank Skid up and into position against the fuel tank. Loosely secure the Rear Fuel Tank Skid assembly using two (2) of the included 1/2" Washers (#12) M12x40mm (#10) flanged bolts threaded through the rear passenger and driver mounting brackets and into the Bronco's factory mounting locations.
  - a. Using a floor jack, jack stands, or similar to hold the front end of the Rear Fuel Tank Skid will make this step significantly easier.

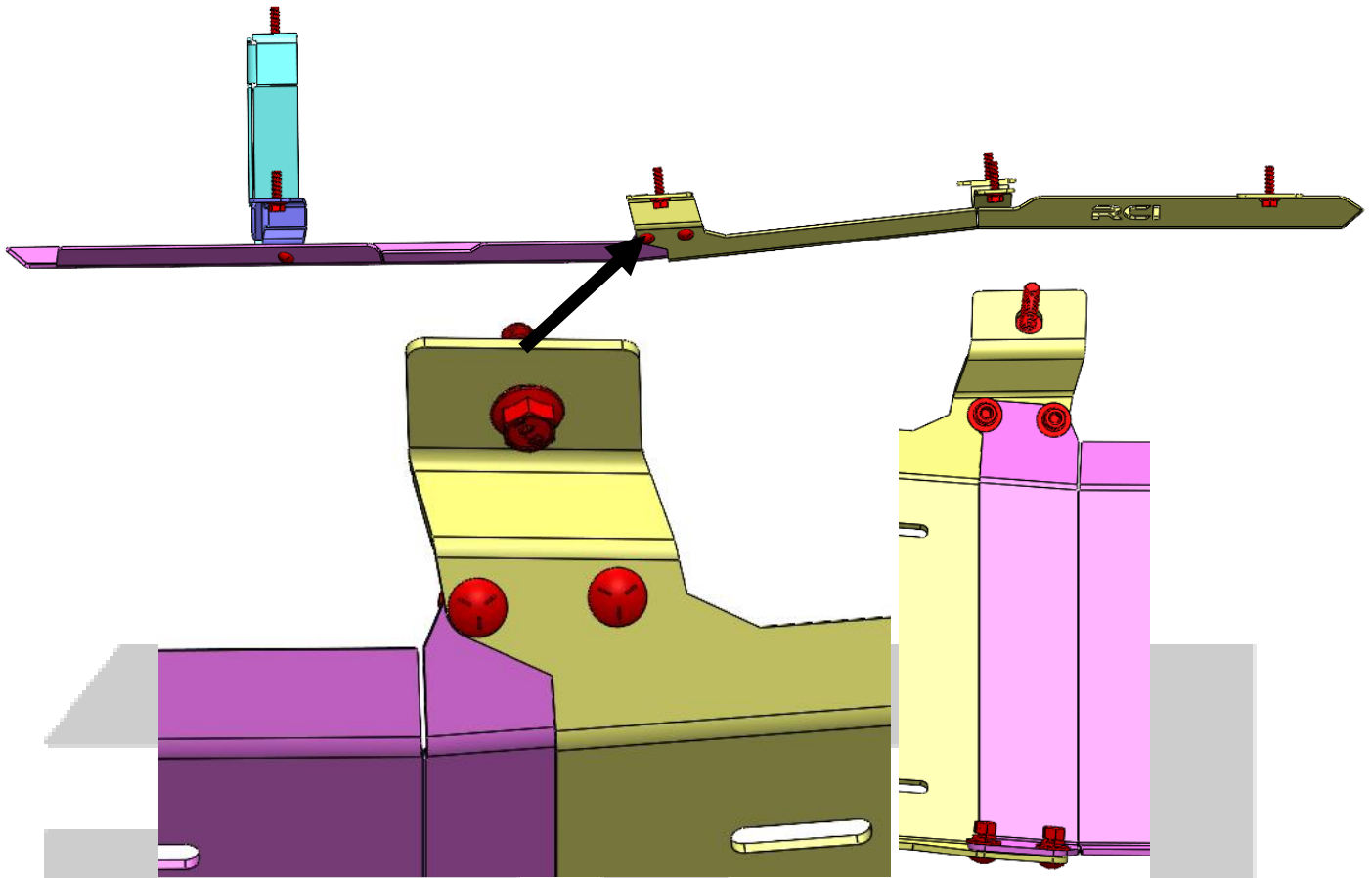


- 3) **Lift the Front Fuel Tank Skid Plate up and into position against the fuel tank. Using four (4) of the included 1/2" Washers (#12) and M12x40mm flanged bolts (#10) through the Front Fuel Tank Skid Plate's mounting locations, loosely secure the skid plate to the Bronco's factory mounting locations.**
  - a. **Using a floor jack, jack stands, or similar to support the rear portion of the Front Fuel Tank Skid Plate will make this step significantly easier.**

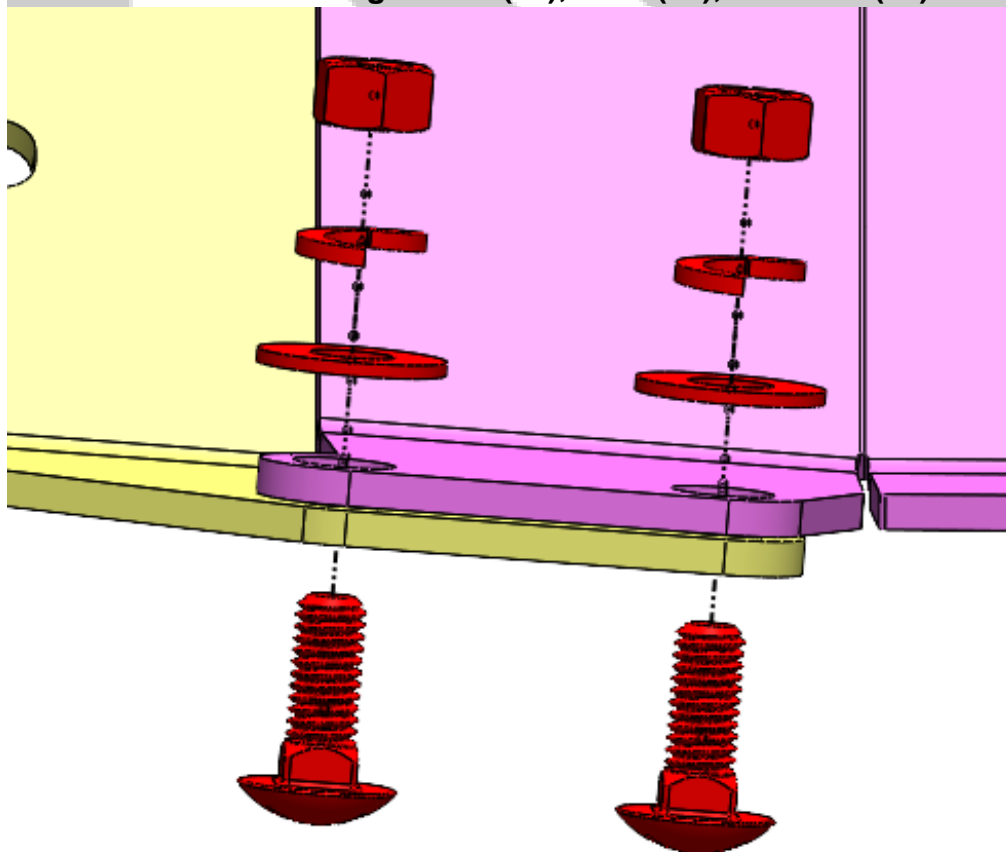


- 4) The Front and Rear Fuel Tank Skid Plates should overlap at the center of the fuel tank with the Front Skid Plate sitting below the Rear Skid Plate. Adjust both Skid Plates to align the holes in the side flanges of the Rear Skid with the square cut outs in the side flanges of the Front Skid.
- a. Using a floor jack, jack stands, or similar to support the rear of the Front Fuel Tank Skid Plate will make this step significantly easier.

OFF ROAD



5) Tightly secure the two halves of the Fuel Tank Skid Plate assembly using 4 of each of the included 3/8" Carriage Bolts (#8), Nuts (#7), Washers (#9) and Split Washers (#11).



Hardware  
Orientation and  
Order

- 6) Secure the Center of the fuel tank skid plate assembly to the factory mounting location on the frame of the vehicle with the use of the final included M12x40mm flanged bolt.
- 7) Tighten all six M12x40mm flanged bolts around the Skid Plate to secure it to the frame of the Bronco.
- 8) Tighten all 3/8" hardware, securing the Rear Passenger and Driver Mounting Brackets to the Rear Fuel Tank Skid Plate.
- 9) Congratulations! Installation of your new RCI Ford Bronco Transmission Skid Plate is now complete!



**Share your new install with us on social media!**  
**We love seeing our products out in the wild!**

**RCI**  
**OFF ROAD**

**[www.rcimetalworks.com](http://www.rcimetalworks.com)**

**[sales@rcioffroad.com](mailto:sales@rcioffroad.com)**

**970-797-3089**

REV: 1 | 9/29/2022

Created: K



Disclaimer: The products sold by RCI Metalworks are intended for off-road use only, should not be modified, and are for use only on the vehicle(s) specifically stated. RCI Metalworks makes no warranties express or implied, including of fitness for a particular purpose or merchantability. RCI Metalworks will not be liable for any damages arising out of the use or misuse of its products. It is the customers' responsibility to ensure the products are safely and properly attached to the vehicle, and all products should be installed by trained professionals. We strive to maintain extremely high quality standards; however, all RCI Metalworks products are individually handcrafted, may vary slightly, and may contain minor imperfections. Due to the nature of raw aluminum, the material may have minor scratches and other blemishes caused by the manufacturing process, especially on the back side of product. RCI Metalworks is constantly seeking to improve its products and reserves the right to make changes to any product.