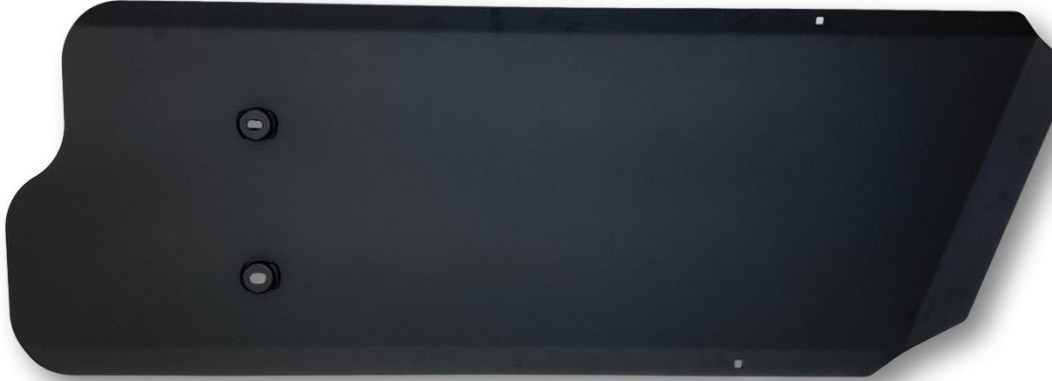


RCI 07-21 TOYOTA TUNDRA 26-GALLON FUEL TANK SKID PLATE INSTALLATION GUIDE

This install guide is applicable to our 26-gallon fuel tank skid plate only



TOOLS REQUIRED:

Description
3/8" or 1/2" Socket Wrench and Socket Set
Metric Box-End Wrenches
Low-Profile Pliers (installation of fuel tank straps)

INCLUDED HARDWARE:

Item	Description	QTY
H1.	M8 x 1.25 Nylon Locking Nut	2 ea.
H2.	5/16" Washer	4 ea.
H3.	3/8" Carriage Bolt	2 ea.
H4.	3/8" Washer	2 ea.
H5.	3/8" Split-Washer	2 ea.
H6.	3/8" Hex Nut	2 ea.
H7.	M8 x 1.25 x 30mm Hex Bolt	2 ea.

INCLUDED COMPONENTS:

Item	Description	QTY
C1.	Fuel Tank Skid Plate	1 ea.
C2.	Flat Mounting Bracket	1 ea.
C2.	"Pry-bar" Mounting Bracket	1 ea.

MOUNTING COMPONENTS:

(This section is only applicable if replacement of the OEM fuel tank straps is necessary)

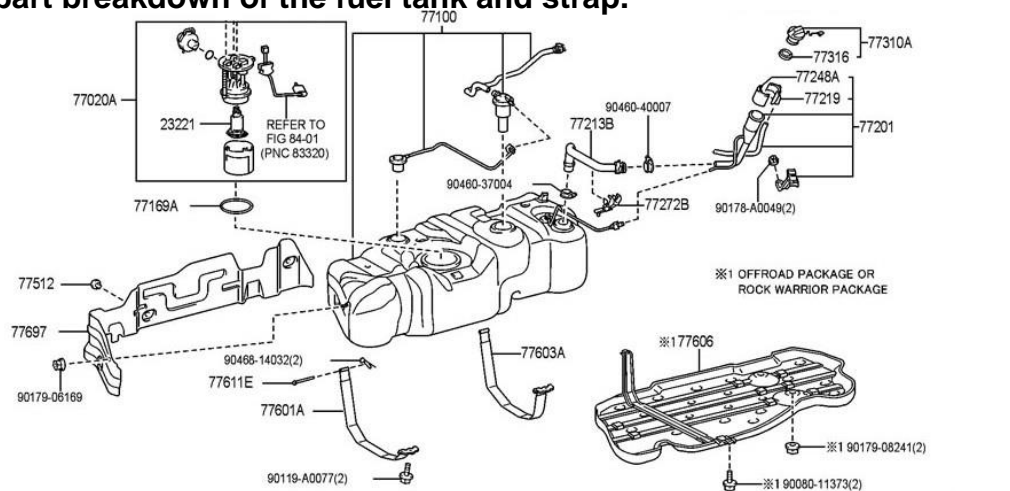
Item	Description	QTY
FS1.	Studded Fuel Tank Strap 77602-0C150 (rear)	1 ea.

INSTALLATION STEPS:

- 1) Begin by unpacking and removing all components and hardware. Please verify that all hardware, components, and mounting components are present. Please reference your original order invoice and verify all items are accounted for.
 - a. **PLEASE NOTE:** If your vehicle is a trim level other than a TRD Off-Road or TRD PRO, you will most likely need to replace the rear OEM fuel tank strap. If you are replacing your OEM smooth fuel tank strap with an OEM studded fuel tank strap and this component was ordered from RCI or TOYOTA; please verify that the part number in the Mounting Components Table match the part number on the Toyota applied ID sticker.
 - b. **SAFETY NOTE:** Installation of fuel tank skid plate and fuel tank strap (if applicable) should only be completed when the fuel tank is near empty! We recommend as low as possible (this may vary based on your proximity to a fuel station).
 - c. **Begin on Step 2:** if you are replacing the OEM smooth fuel tank strap.
 - d. **Begin on Step 5:** if you are only installing the fuel tank skid plate to your existing OEM studded strap.

- 2) Replacement of the OEM fuel tank strap is very simple. Begin by locating the rear OEM fuel tank strap already mounted on your vehicle and loosen the retaining bolt securing the strap near the outside of the vehicle. Once this fastener is removed, the strap should pivot freely toward the inside of the vehicle. Locate the second mounting point and identify the pin that allows the strap to hinge. A hairpin cotter should be in place at the end of the hinge pin. Remove the cotter and tap the hinge pin out of the hinge. See **FIGURE 1** below for a part breakdown of the fuel tank and strap.

FIGURE 1



77248G

- 3) Identify the replacement Studded Fuel Tank Strap ([77602-0C150](#)) and reverse the guide in step 2 for installation.
- 4) Verify secure installation of all fuel tank straps on the vehicle. Check that all strap retaining bolts are snug and tightened to **30 ft/lbs.**
- 5) If the vehicle is equipped with an OEM plastic fuel tank skid plate, this plate can be easily removed by loosening the two hex nuts present at the rear of the OEM plate. Two bolts will also be present, securing a bracket, on either side of the OEM plate towards the front. One bolt sits between the vehicle drive shaft and the fuel tank heat shield. These OEM hex nuts, washers, and bolts can be discarded along with the existing OEM fuel tank skid plate.
 - a. **PLEASE NOTE:** In some vehicle trims and years, the above referenced bolt that nests between the driveshaft and the OEM heat shield is no longer present. Toyota has removed this mounting location. Due to this, a self-tapping SEMS bolt may be necessary to complete the installation. Currently, RCI does not supply this bolt.
- 6) Before mounting your new RCI Fuel Tank Skid Plate, verify the existence of the mounting location in step 5a.
 - a. If present, proceed to step 7 below.
 - b. If the mounting location is NOT present, skip step 7 and do not mount the “Pry-bar” Mounting Bracket([C2](#)) to the RCI Skid Plate until a self-tapping fastener can be installed with the bracket.
- 7) Install the “Pry-bar” Mounting bracket([C3](#)) to the Fuel Tank Skid Plate([C1](#)) with one 3/8” Carriage Bolt([H3](#)), 3/8” Washer([H4](#)), 3/8” Split-Washer([H5](#)), and 3/8” Hex Nut([H6](#)). The Mounting Bracket([C3](#)) should sit inside the 45-degree angle bevel of the skid plate with the corresponding bracket 45-degree bend. The carriage bolt threads should be pointing to the middle of the skid plate. Tighten to hand tool tight.
- 8) Install the Flat Mounting bracket([C2](#)) to the Fuel Tank Skid Plate([C1](#)) with one 3/8” Carriage Bolt([H3](#)), 3/8” Washer([H4](#)), 3/8” Split-Washer([H5](#)), and 3/8” Hex Nut([H6](#)). The Mounting Bracket([C2](#)) should sit inside the 45-degree angle bevel of the skid plate with the corresponding bracket 45-degree bend. The carriage bolt threads should be pointing to the middle of the skid plate. Tighten to hand tool tight. The mounting bracket should lay parallel with the bottom of the plate once mounted.
- 9) Align the new RCI Fuel Tank Skid Plate([C1](#)) with the dual mounting holes on the skid plate towards the rear of the vehicle. Due to the size and weight of the skid plate, a floor jack, stool, cooler, or helping hand may be needed. Attach one 5/16th washer([H2](#)) and one M8 Nylon Locking Nut([H1](#)) to the threads of the studded fuel tank strap. **DO NOT TIGHTEN.** Once both studs are secured, proceed to secure the brackets.

- 10) Hand thread one M8 Hex Bolt(H7) and 5/16" Washer(H2) into the existing frame hole that aligns with the mounting hole on the Flat Mounting Bracket(C2). Allow the fastener to remain loose in place.
- 11) Hand thread one M8 Hex Bolt(H7) and 5/16" Washer(H2) into the existing frame hole that aligns with the mounting hole on the "Pry-bar" Mounting Bracket(C3). Allow the fastener to remain loose in place.
- 12) With all fasteners in place, begin by tightening each fastener a small amount at a time. All fasteners should be hand tool tight. DO **NOT** OVER-TORQUE. Due to the nylon insert of the hex nuts, a torque spec is inaccurate for the studded fuel tank strap. Tighten both M8 Hex Bolts(H7) to **30ft/lbs**.
- 13) Installation of your RCI 07-21 TOYOTA Tundra 26 Gallon Fuel Tank Skid Plate is now complete! We recommend that the fasteners for this plate be inspected after 500 road miles or your first off-road trip with this skid plate.



Share your new install with us on social media!

We love seeing our products out in the wild!

www.rcimetalworks.com

sales@rcioffroad.com

970-797-3089

REV: 1 | 01/26/2022

Created: AWM

