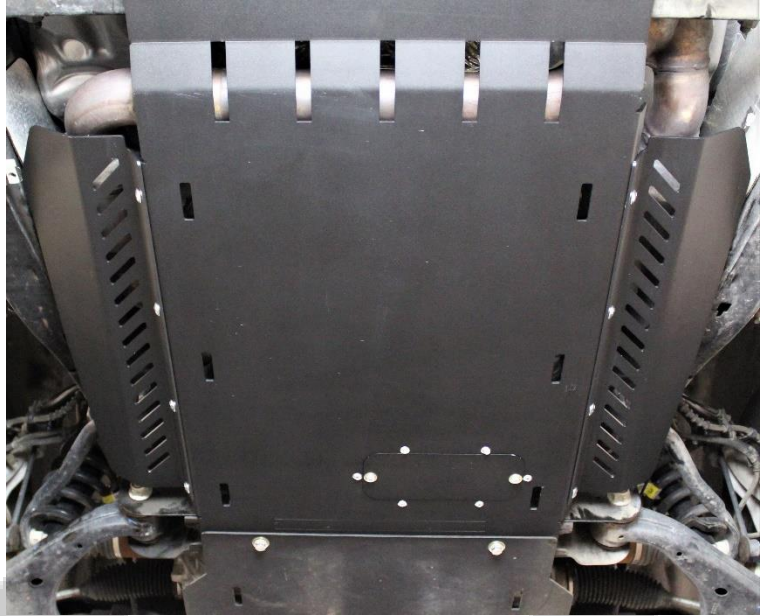


RCI 09+ F-150 CATALYTIC GUARD RETROFIT GUIDE

****This install guide is applicable to our 09+ F-150 Catalytic Guard Kit****



TOOLS REQUIRED:

Description
3/8" or 1/2" Socket Wrench and Socket Set
Center Punch
1/8" Drill Bit
3/8" Drill Bit
Electric Drill
Permanent Marker
Squeeze Clamps

INCLUDED HARDWARE:

Item	Description	QTY
H1.	5/16" x 1" Carriage Bolt	8 ea.
H2.	5/16" Washer	8 ea.
H3.	5/16" Nylon Lock-Nut	8 ea.

INCLUDED COMPONENTS:

Item	Description	QTY
C1.	Driver Side CAT Guard	1 ea.
C2.	Passenger Side CAT Guard	1 ea.

INSTALLATION STEPS:

- 1) Begin by unpacking and removing all components and hardware. Please verify that all hardware, components, and mounting components are present. Please reference your original order invoice and verify all items are accounted for.
 - a. **PLEASE NOTE:** An RCI Transmission Skid Plate is required for use with this kit, but one is NOT supplied. This guide is relevant to the 09+ Ford.
- 2) If an RCI Transmission Skid Plate is currently installed on the vehicle, it will need to be removed prior to beginning the retrofit. The CAT Guards are designed to be theft proof and prohibit mounting or removal while the Transmission skid plate is fully installed.
- 3) With the transmission skid plate removed from the vehicle, align the Driver Side CAT Guard(C1) 1.25" from the front of the lower flange present on the driver side of the transmission skid plate and clamp it in place. (Figure 1)
- 4) Please adjust the alignment of the CAT Guard based on the photos below in Figure 1 and Figure 2.

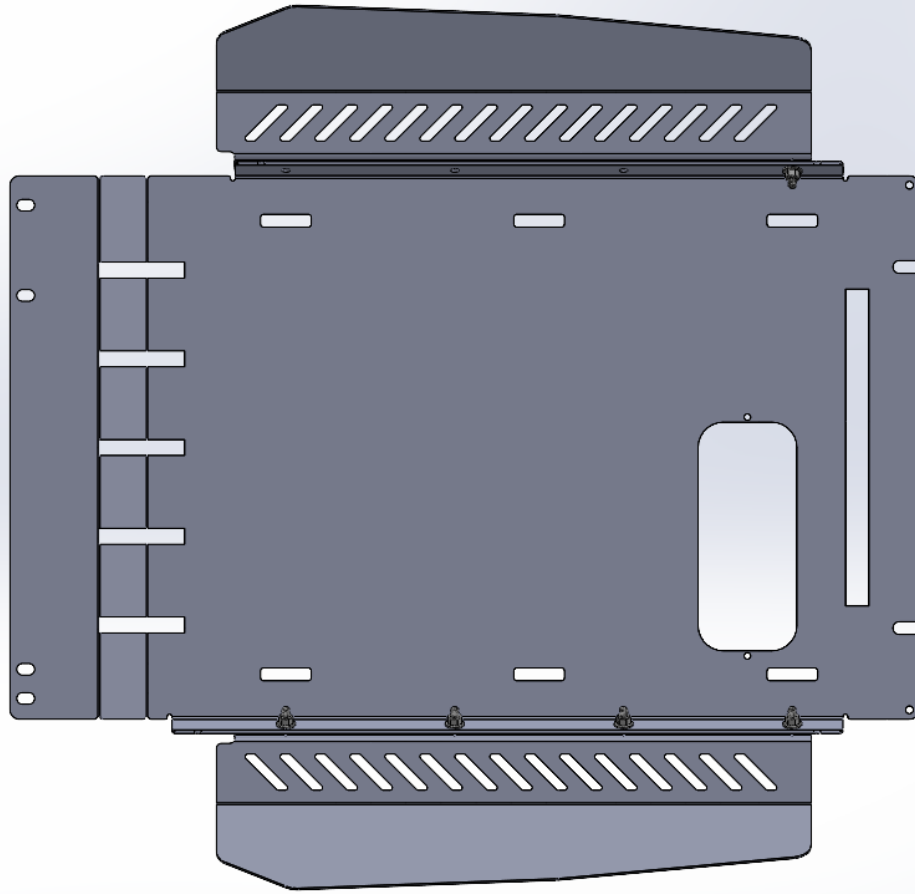


FIGURE 1

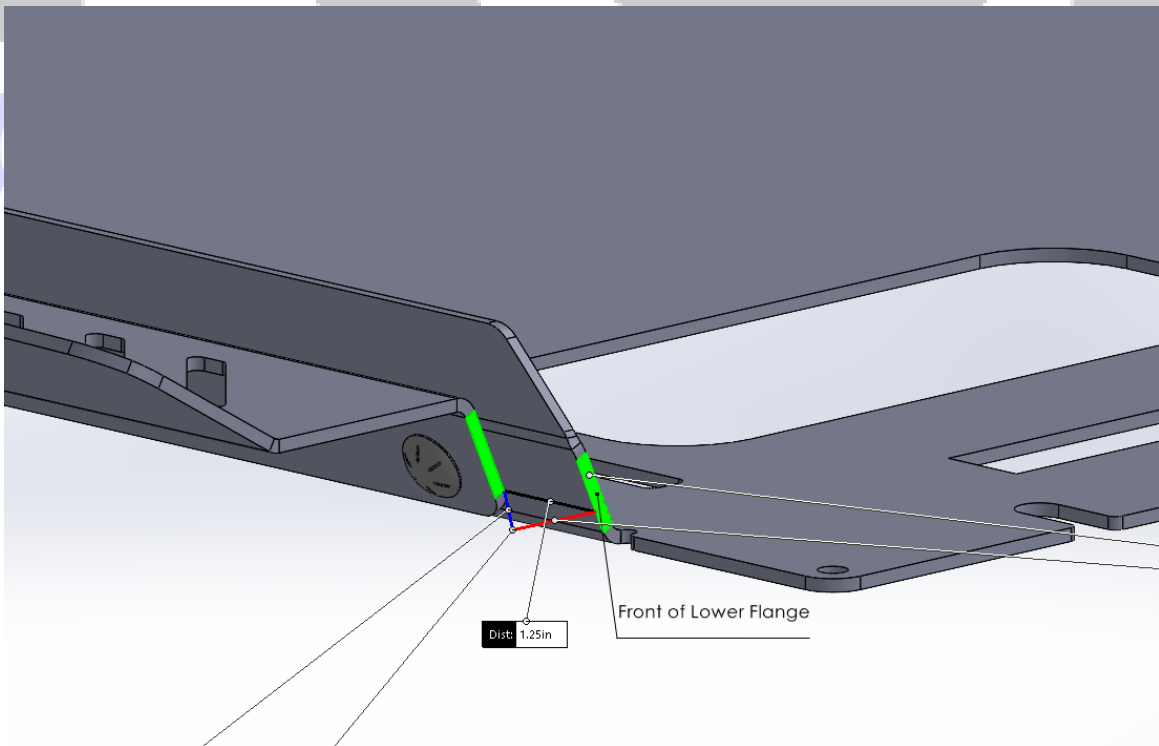


FIGURE 2

- 5) With the CAT Guard properly aligned, mark the center point of each rectangular cutout by using a permanent marker. (Figure 3)



FIGURE 3

- 6) With all the center points marked, remove the CAT Guard and confirm that the points are approximately 1.5 inches from the top of the transmission plate flange



- 7) Using an automatic center punch, impact the permanent marker points at all four locations.
- 8) Using the 1/8" drill bit and an electric drill, use the impact marks to drill a pilot hole. Repeat this for all four locations.
- 9) Once pilot holes are drilled. Swap to the 3/8" drill bit and drill out all four locations with a pilot hole. (Figure 4)

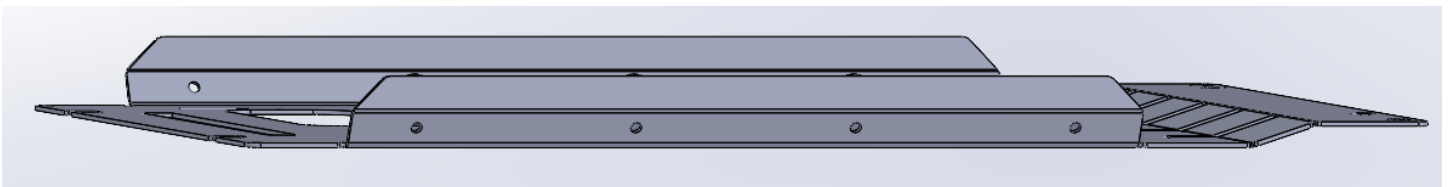


FIGURE 4

- 10) Using your new mounting points, re-align the CAT Guard with the transmission skid plate and install one 5/16" Carriage bolt(H1) per mounting location. The threads for each carriage bolt should be facing towards the center of the plate. Attach a 5/16" Washer(H2) and 5/16" Nylon Lock-Nut(H3) to each carriage bolt. Center the bolts within the CAT Guard Slots and tighten to hand tool tight. (Figure 5).

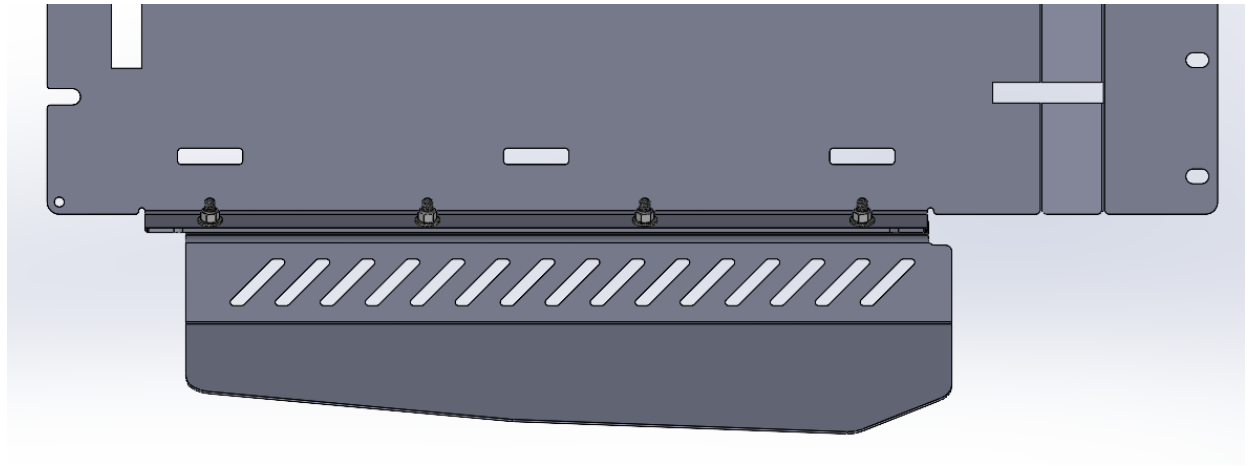
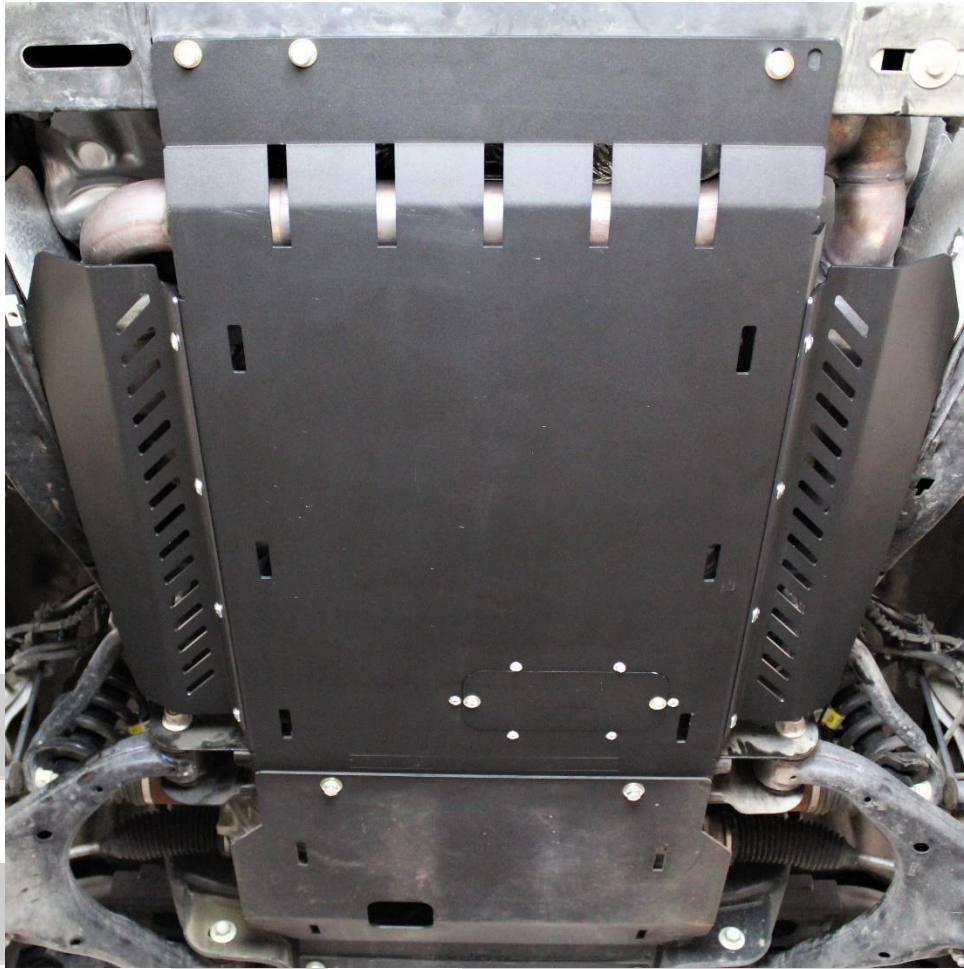


FIGURE 5

- 11) Repeat steps 3-10 for the passenger side CAT guard(C2).
- 12) Lift the Transmission Skid Plate and CAT Guard assembly to its final mounting position. Observe the spacing between the vehicle catalytic converters and CAT Guards. Adjust and repeat if necessary.
- 13) Install the Transmission Skid and CAT Guard assembly. Refer to the 09+ F150 Transmission Skid Plate install guide if necessary.
- 14) Enjoy your new RCI 09+ F150 Catalytic Guard kit!

RCI
OFF ROAD



OFF ROAD

**Share your new install with us on social media!
We love seeing our products out in the wild!**

www.rcimetalworks.com

sales@rcioffroad.com

970-797-3089

REV: 1 | 06/20/2022

Created: AWM

