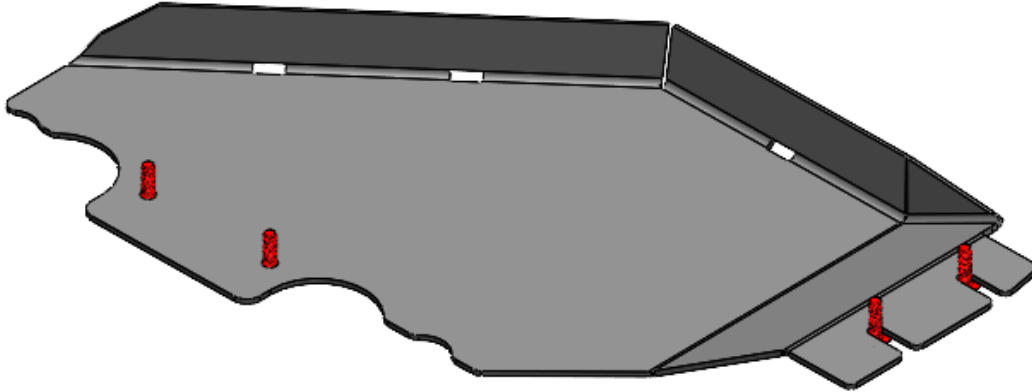


RCI FORD BRONCO TRANSFER CASE SKID PLATE INSTALLATION GUIDE

This install guide is applicable to our Ford Bronco Transfer Case Skid Plate ONLY



TOOLS REQUIRED:

Description
15mm and 9/16" Socket Wrench and Socket Set
Box-End Wrenches

INCLUDED HARDWARE:

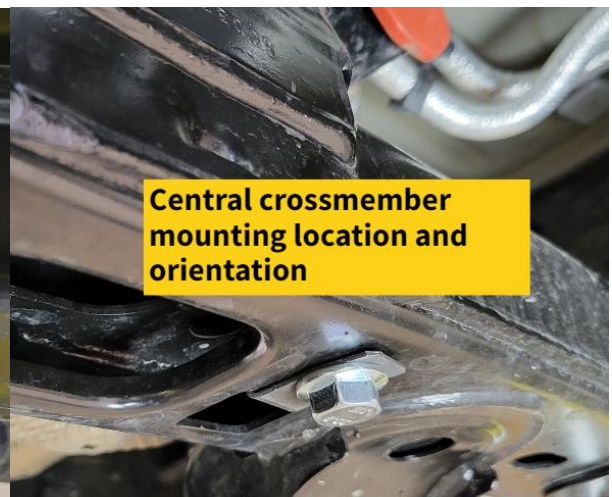
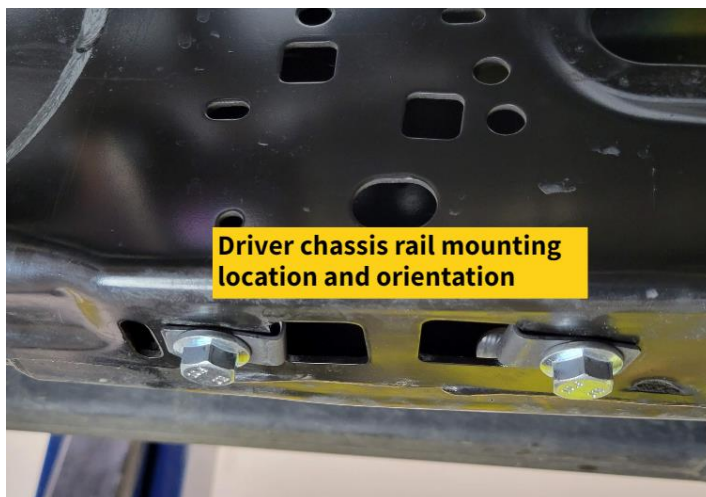
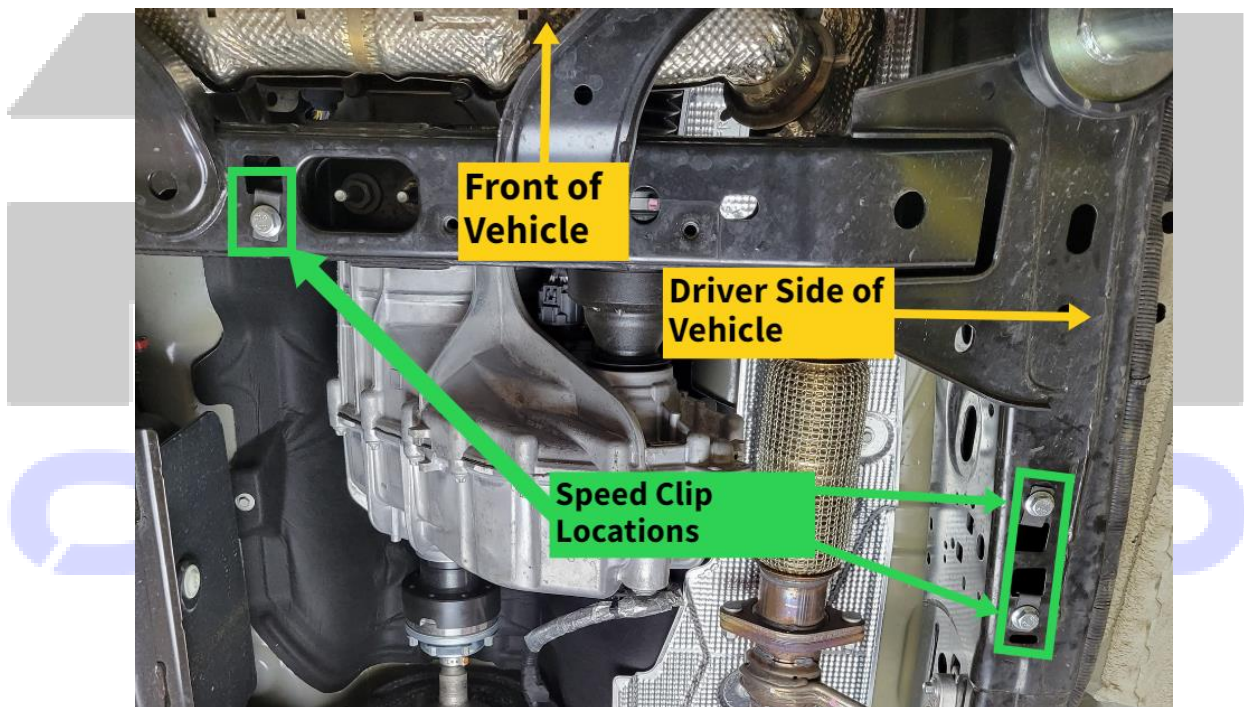
Item	Description	QTY
H1.	3/8" Washer	4 ea.
H2.	M10 X 35mm Flanged Bolt	4 ea.
H3.	M10 Speed Clip	3 ea.

INCLUDED COMPONENTS:

Item	Description	QTY
C1.	Bronco Transfer Case Skid Plate	1 ea.

INSTALLATION STEPS:

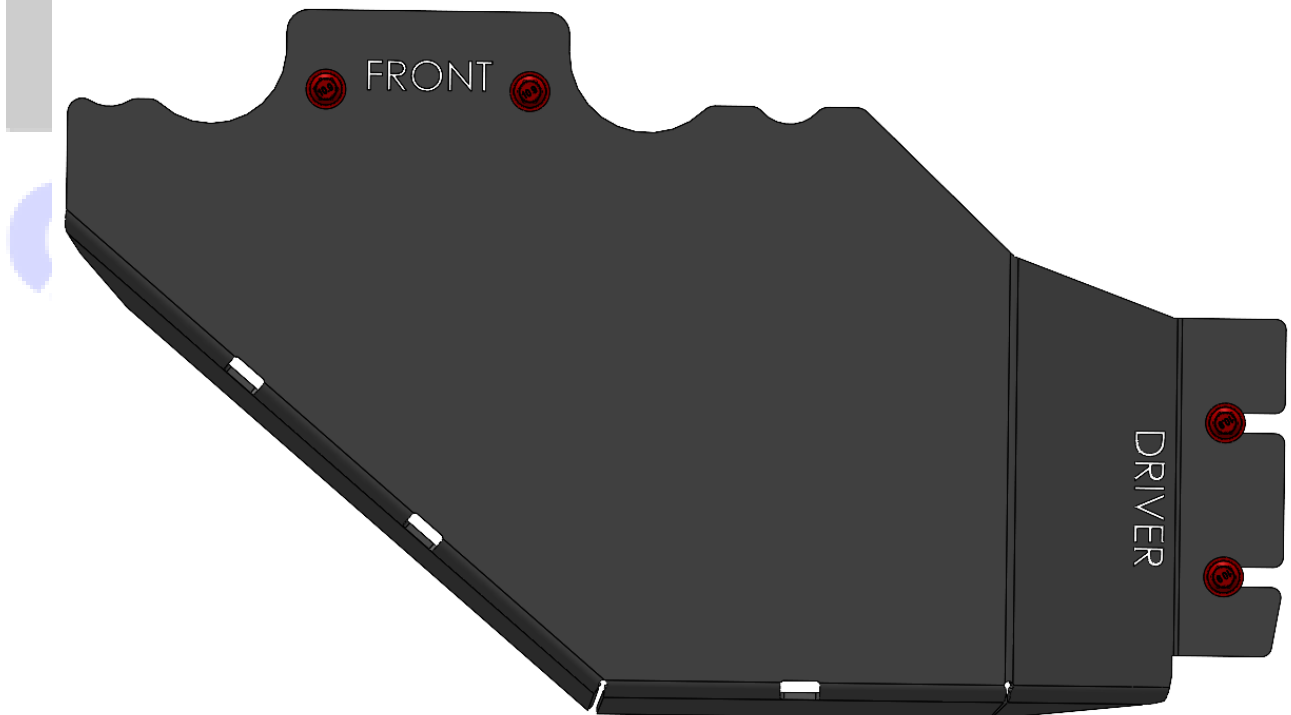
- 1) Begin by unpacking and removing all components and hardware. Please verify that all hardware, components, and mounting components are present. Please reference your original order invoice and verify all items are accounted for.
 - a. Please note that our Bronco Transfer Case skid plate mounts closer to the vehicle and “above” our Bronco Transmission skid plate. If installing both, please install the Transfer Case skid plate before installing the Transmission skid plate.
 - b. If installing on a Bronco with the optional bash guards package, uninstall the factory transfer case bash guard before installing our Transfer Case skid plate.
- 2) Install M10 Speed Clips(3) in the driver chassis rail and the central crossmember. Refer to the images below for locations and orientation.



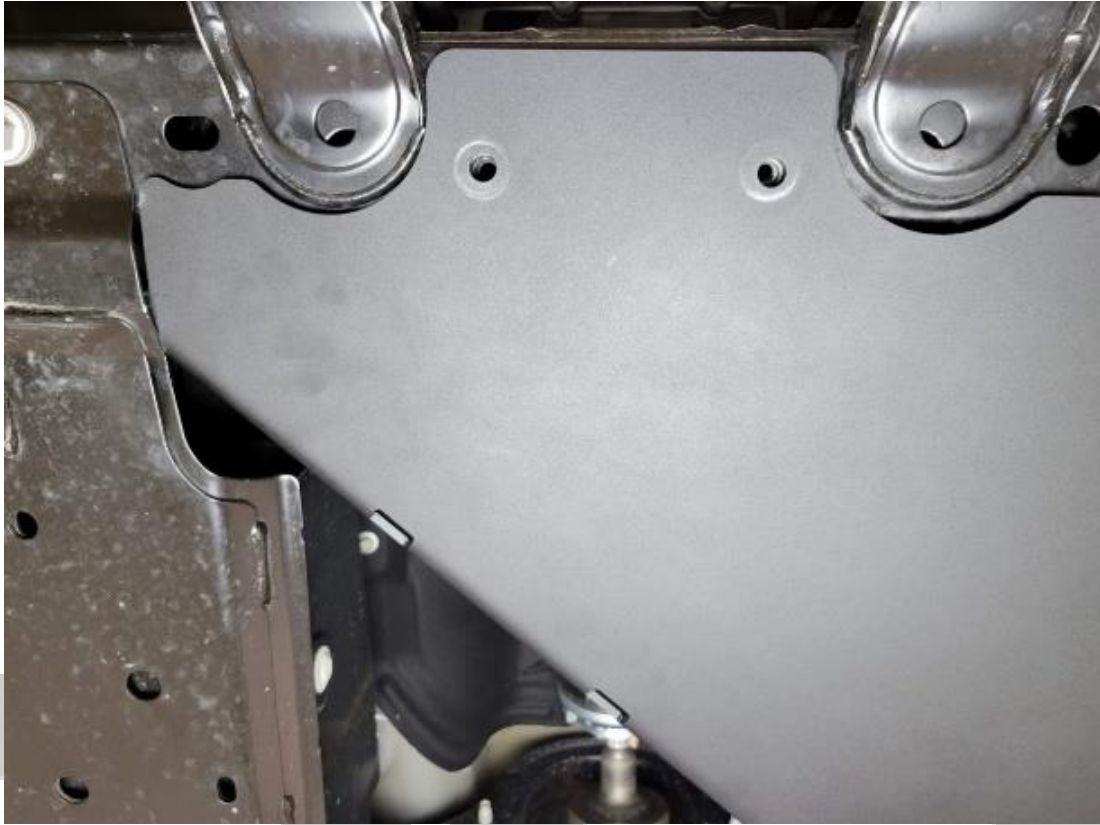
- 3) Install a set of 3/8" washers(2) and M10x35mm bolts(2) in the speed clip locations on the driver side chassis rail. Leave approximately 1/2" of exposed thread between the bottom of the chassis rail and the washer.



- 4) Align the slots on the Transfer Case skid plate with the installed bolts. Slide the transfer case skid from the center of the vehicle to the driver side, allowing the bolts to slide into the slots. Allow Transfer Case skid to rest on the washers and do not tighten. Match the orientation shown below.



- 5) Adjust the Transfer Case skid plate to align with the mounting locations present on the central factory crossmember.



- 6) **Install M10X35mm bolts(2) and 3/8" washers(2) through the mounting points towards the front of the Transfer Case and into the factory crossmember mounting locations. Tighten bolts.**
- 7) **Tighten the driver-side chassis bolts installed in step 2.**
- 8) **Congratulations! Installation of your new RCI Ford Bronco Transfer Case Skid Plate is now complete!**

Share your new install with us on social media!
We love seeing our products out in the wild!

RCI
OFF ROAD

www.rcimetalworks.com

970-797-3089

REV: 1 | 01/26/2022

Created: AWM

