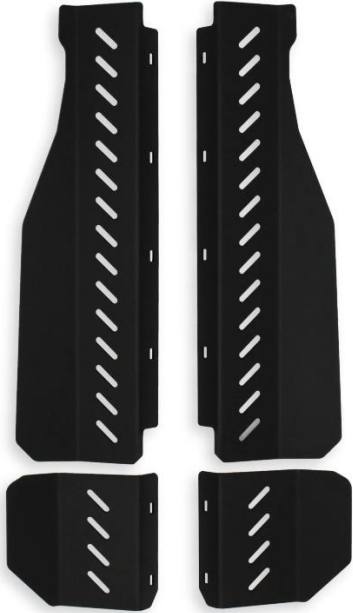


RCI 07-21 Tundra CATALYTIC GUARD RETROFIT GUIDE

****This install guide is applicable to our 07-21 Tundra**



Catalytic Guard Kit**



TOOLS REQUIRED:

Description
3/8" or 1/2" Socket Wrench and Socket Set
Automatic Center Punch
1/8" Drill Bit
3/8" Drill Bit
Electric Drill
Permanent Marker
Squeeze Clamps

INCLUDED HARDWARE:

Item	Description	QTY
H1.	5/16" x 1" Carriage Bolt	12 ea.
H2.	5/16" Washer	14 ea.
H3.	5/16" Nylon Lock-Nut	12 ea.
H4.	M8 Speed-Clip	2 ea.
H5.	M8 Split Washer	2 ea.
H6.	M8 x 100mm M8 Bolt	2 ea.

INCLUDED COMPONENTS:

Item	Description	QTY
C1.	Driver Side Front CAT Guard	1 ea.
C2.	Passenger Side Front CAT Guard	1 ea.
C3.	Driver Side Rear CAT Guard	1 ea.
C4.	Passenger Side Rear CAT Guard	1 ea.
C5.	Engine/Transmission Retrofit Mount Plate	1 ea.

INSTALLATION STEPS:

- 1) Begin by unpacking and removing all components and hardware. Please verify that all hardware, components, and mounting components are present. Please reference your original order invoice and verify all items are accounted for.
 - a. **PLEASE NOTE:** An RCI Toyota Transmission Skid Plate is required for use with this kit, but one is NOT supplied. This guide is relevant to the 07-21 Tundra.
- 2) If an RCI Toyota Transmission Skid Plate is currently installed on the vehicle, it will need to be removed prior to beginning the retrofit. The CAT Guards are designed to be theft proof and prohibit mounting or removal while the Transmission skid plate is fully installed. The existing 3/8" x 4" carriage bolts used to mount the engine and transmission skid plates to the vehicle cross member should also be removed completely at this time.
- 3) With the transmission skid plate removed from the vehicle, align the Front Driver Side CAT Guard(C1) with the outside of the flange present on the front driver side of the transmission skid plate and clamp it in place. There is a notch on each of the CAT Guards designed to accommodate the alignment lugs for the front suspension. That notch will need to face towards the front of the skid plate. (Figure 1)

- 4) Please adjust the alignment of the CAT Guard based on the photos below in Figure1 and Figure 2.

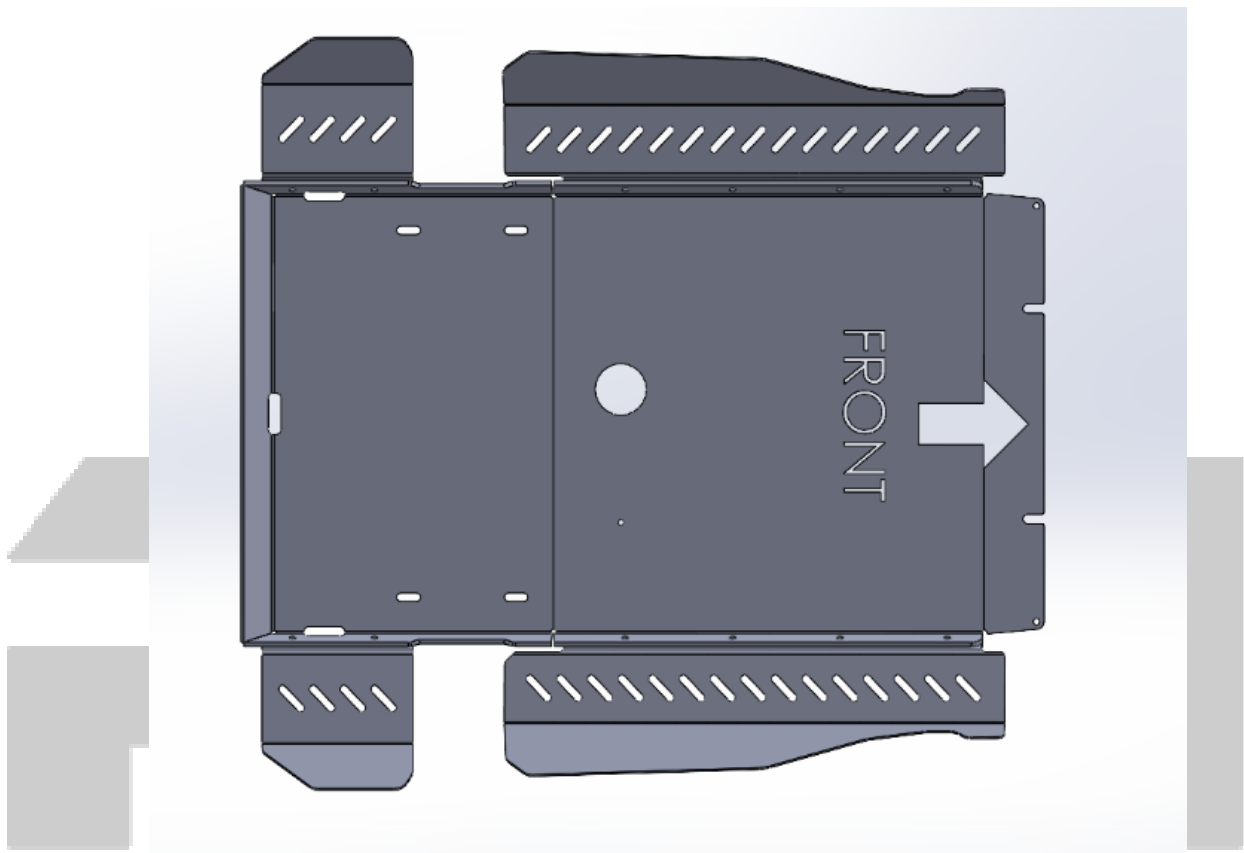


FIGURE 1

OFF ROAD

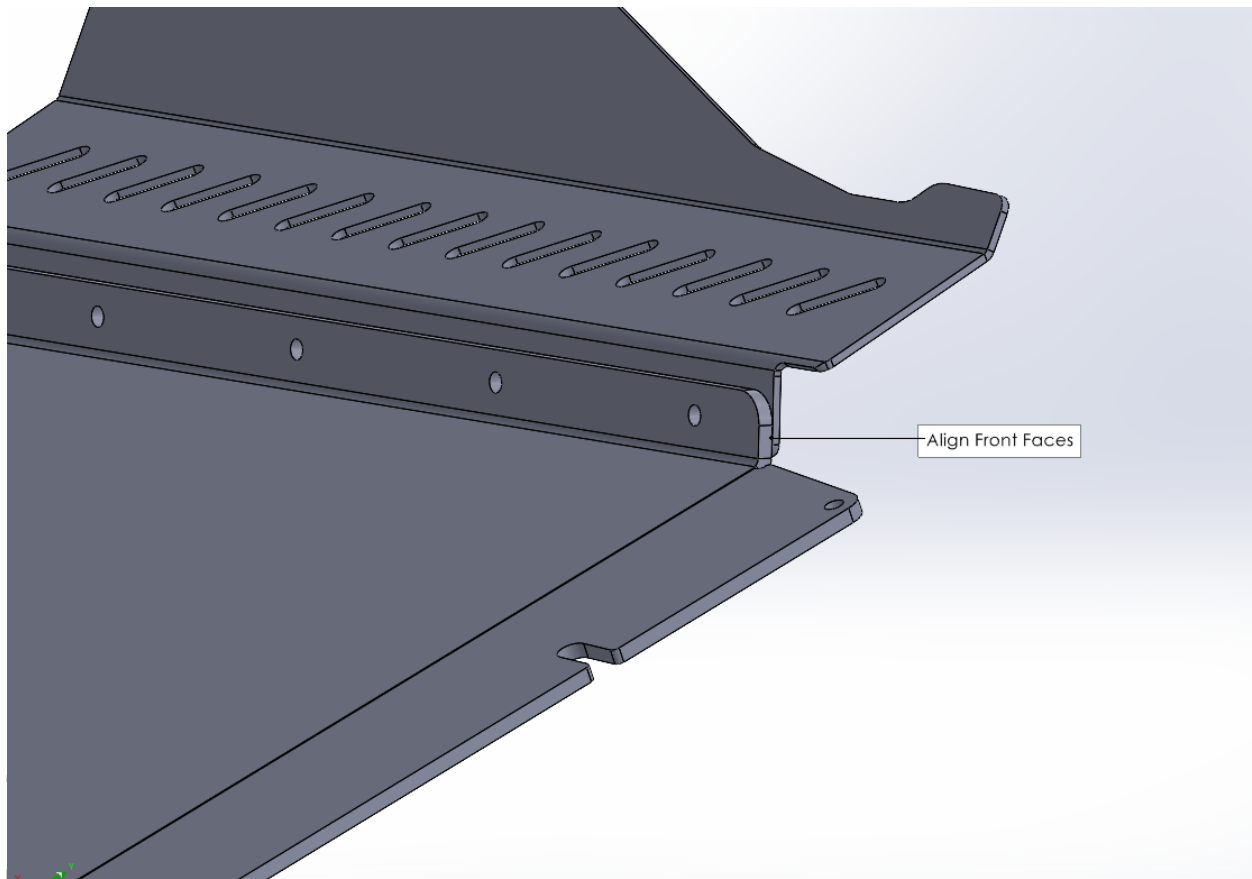


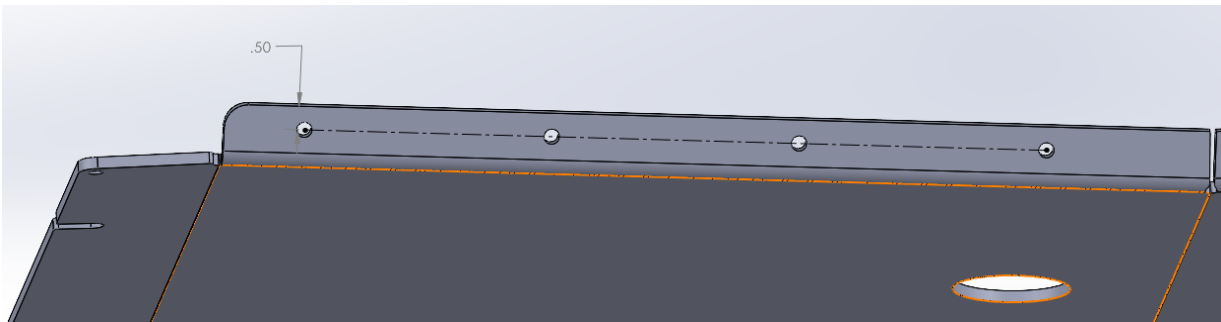
FIGURE 2

- 5) With the CAT Guard properly aligned, mark the center point of each square cutout by using a permanent marker. (Figure 3)



FIGURE 3

- 6) With all the center points marked, remove the CAT Guard and confirm that the points are 1/2 inches from the top of the transmission plate flange



- 7) Using an automatic center punch, impact the permanent marker points at all four locations.
- 8) Using the 1/8" drill bit and an electric drill, use the impact marks to drill a pilot hole. Repeat this for all four locations.
- 9) Once pilot holes are drilled. Swap to the 3/8" drill bit and drill out all four locations with a pilot hole. (Figure 4)

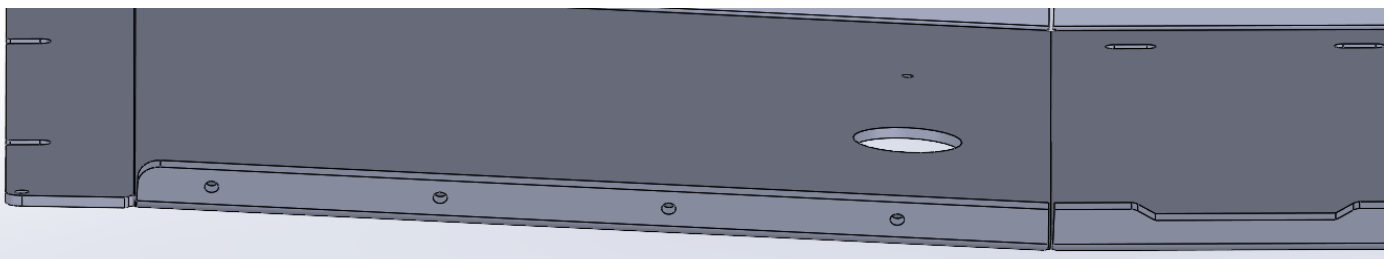
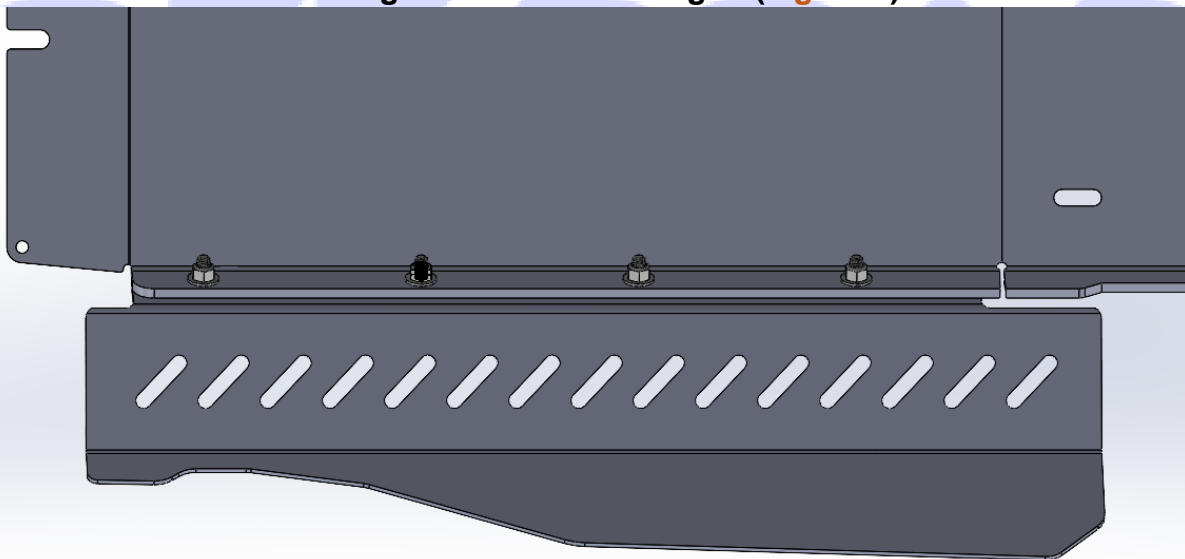


FIGURE 4

- 10) Using your new mounting points, re-align the CAT Guard with the transmission skid plate and install one 5/16" Carriage bolt(H1) per mounting location. The threads for each carriage bolt should be facing towards the center of the plate. Attach a 5/16" Washer(H2) and 5/16" Nylon Lock-Nut(H3) to each carriage bolt. Center the bolts within the CAT Guard Slots and tighten to hand tool tight. (Figure 5).



FIGURE

5

- 11) Align Rear Driver CAT Guard with the outer face of the flange present at the rear of the transmission skid plate. Align the front face of the Rear Driver CAT Guard

approximately 3/4 of the way towards the back of the angled cut at the front of the transmission skid plate flange (**Figure 6 and 7**). Then secure Rear Driver CAT Guard to rear flange of transmission skid with clamp(s).

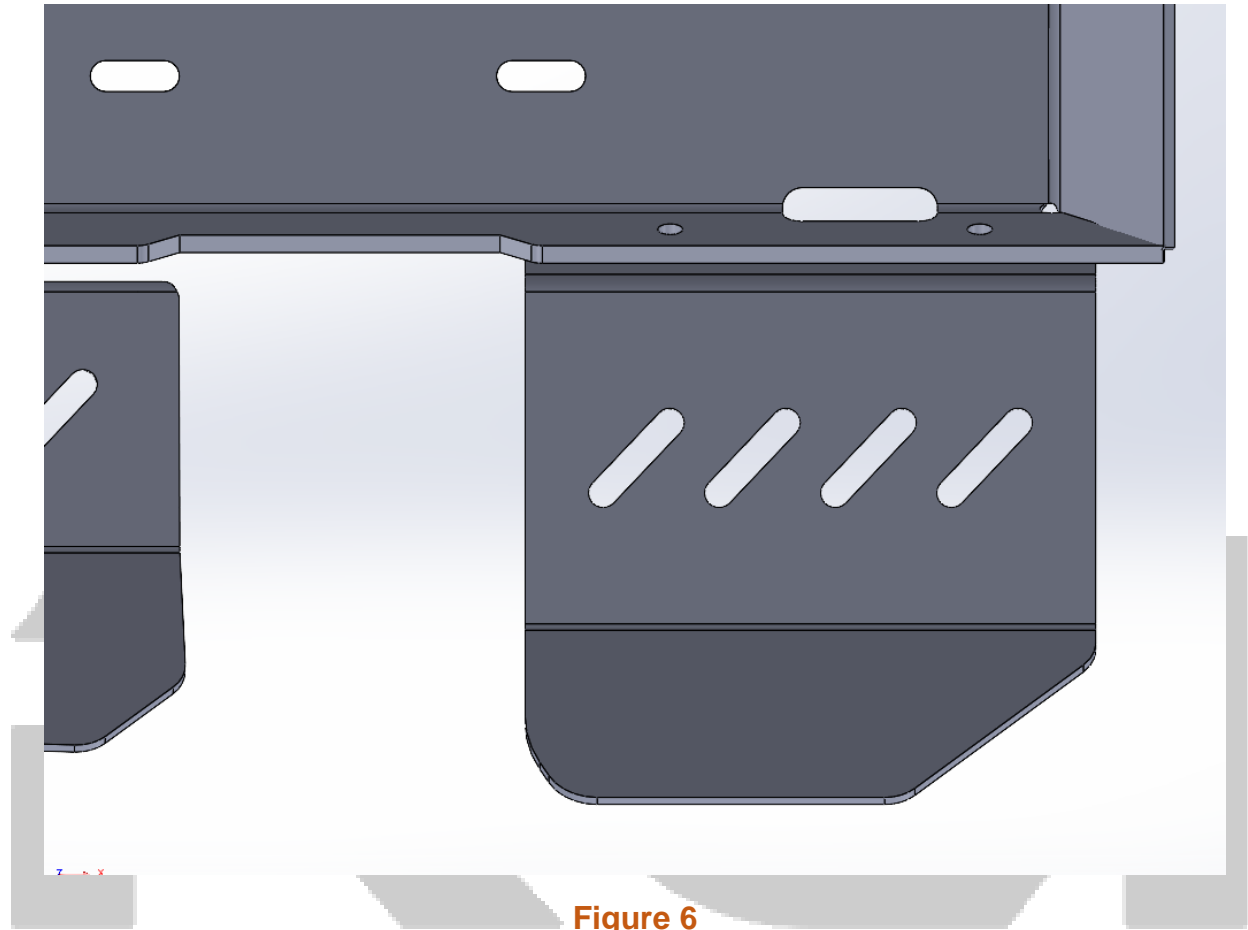


Figure 6

OFF ROAD

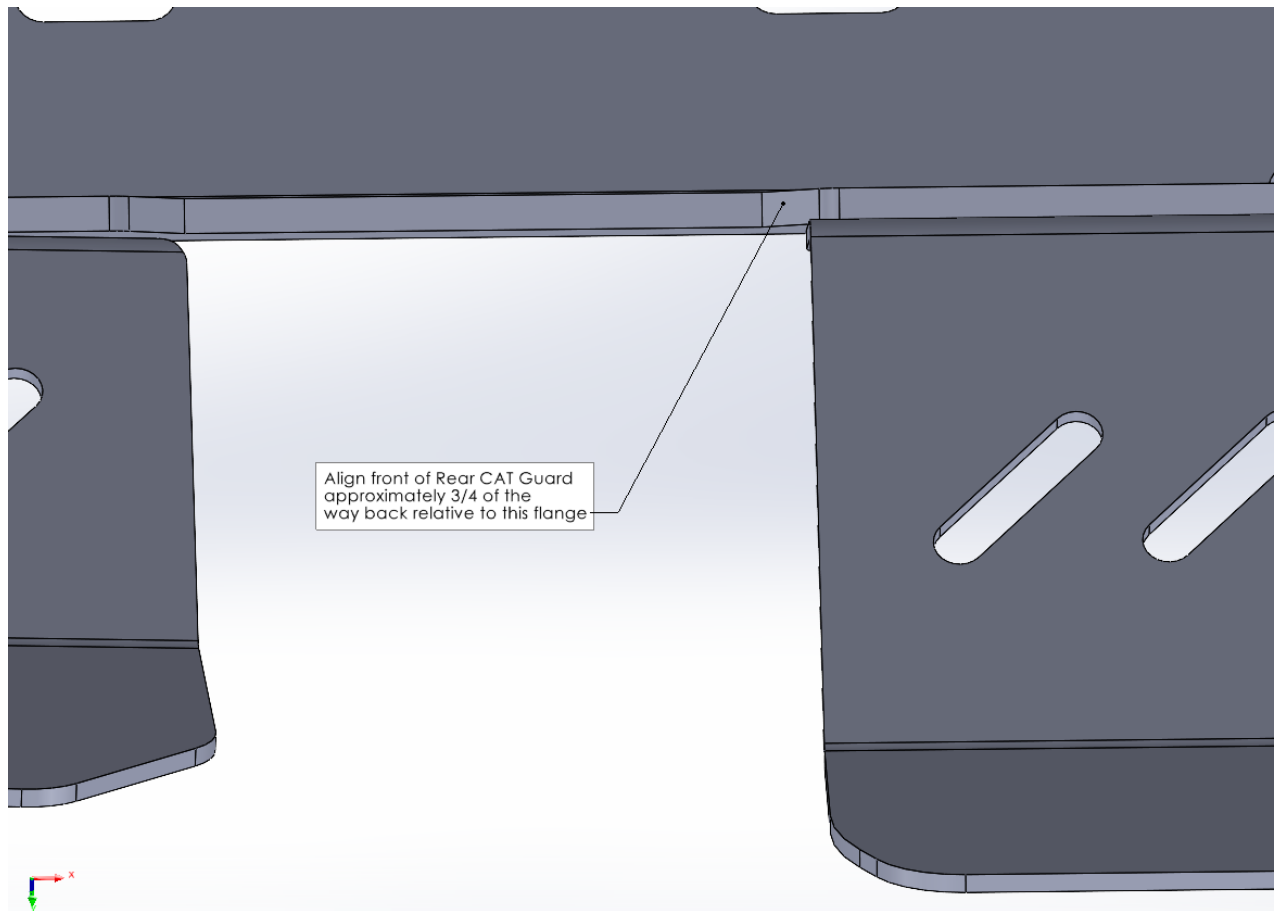


Figure 7

12) Align the bottom of the Rear Driver CAT Guard with the center of the slot at the rear of the transmission skid. (Figure 8) Adjust clamps if necessary.

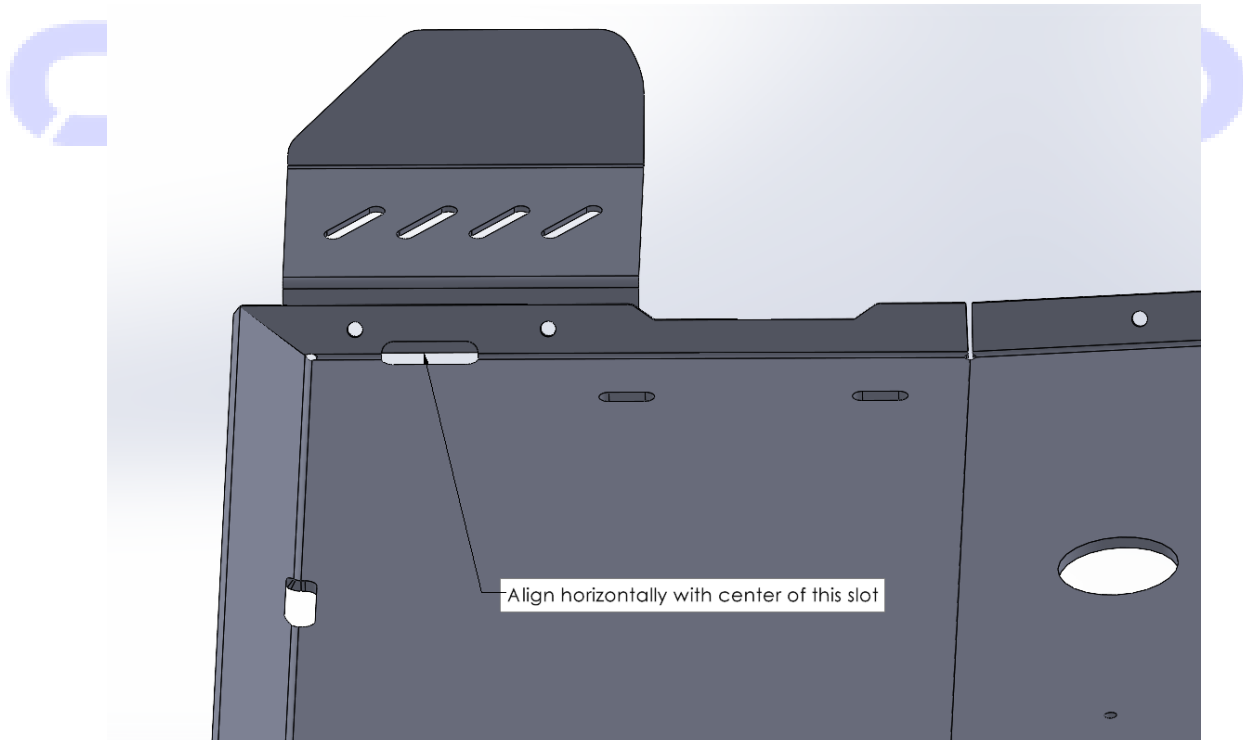


Figure 8

- 13) With the Rear Driver CAT Guard aligned, repeat steps 5-10 to mark, measure, drill, and install the Rear Driver CAT Guard.
- 14) Repeat steps 3-13 for the Front and Rear Passenger Side CAT Guards.
- 15) Install the two Speed Clips(H4) on either side of the Engine/Transmission Retrofit Mount Plate(C5) as shown in Figure 9.

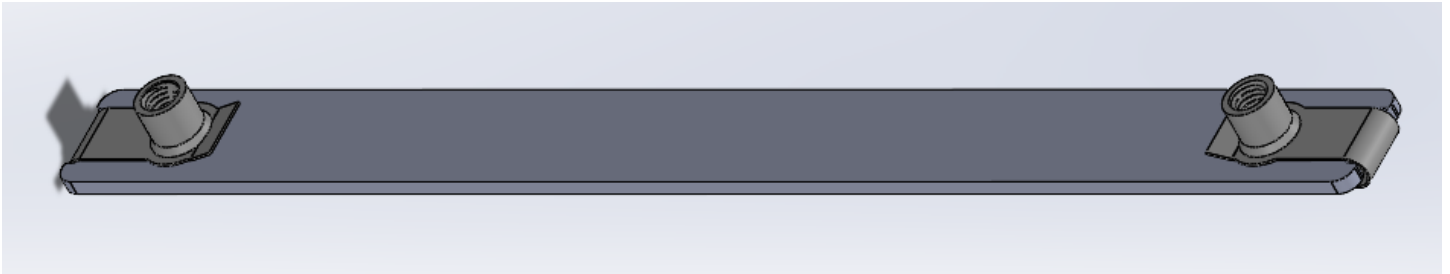
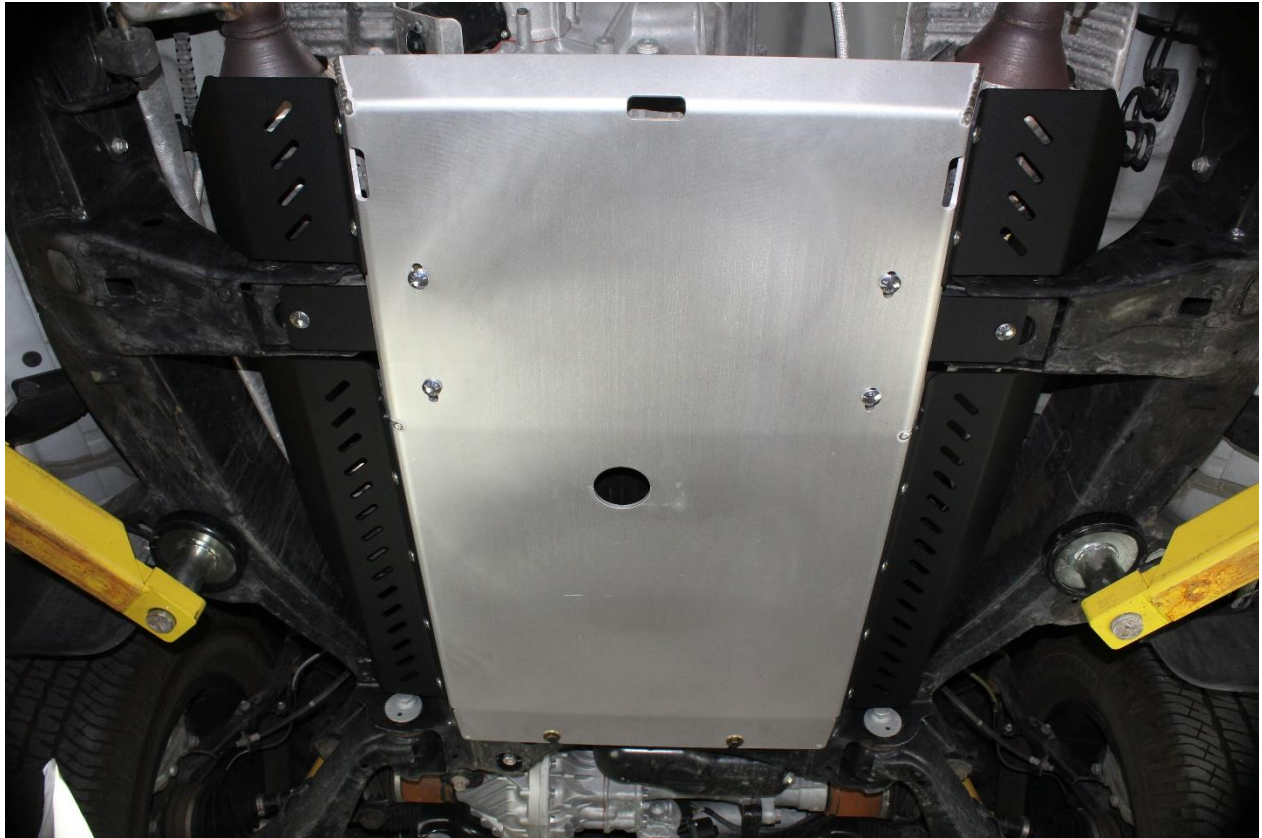


Figure 9

- 16) Install the Mount plate(C5) and Speed Clip Assembly above the factory crossmember with the flat side flush with the crossmember.
- 17) Mount a 5/16" washer(H2) on each of the M8 Bolts(H6) and begin threading the M8 Bolts(H6) through the Engine Skid(if applicable), the factory crossmember, and into the Retrofit Mount Plate(C5). Leave about 1/2" of thread visible below the factory crossmember.
- 18) Lift the Transmission Skid Plate and CAT Guard assembly to its final mounting position. Observe the spacing between the vehicle crossmembers and CAT Guards. Adjust and repeat if necessary.
- 19) Install the Transmission Skid and CAT Guard assembly. Refer to the 2007-21 Tundra Transmission/T-case Skid Plate install guide if necessary.
- 20) Enjoy your new RCI 2007-21 Tundra Catalytic Guard kit!



**Share your new install with us on social media!
We love seeing our products out in the wild!**

www.rcimetalworks.com

sales@rcioffroad.com

970-797-3089

REV: 1 | 01/26/2022

Created: AWM

