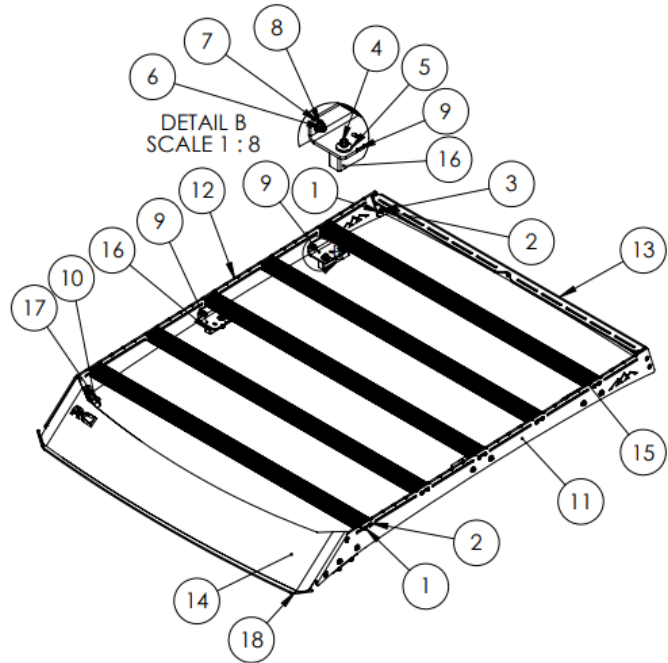


RCI Tacoma Roof Rack

ITEM NO.	PART NUMBER	QTY.	Kit
1	1/4-20 x 0.875 Button Head	28	y
2	1/4" Black Flat Washer	36	y
3	1/4-20 Nut With Lock Washer	8	y
4	M6 x 45 Rack Mounting Bolt	10	y
5	1/4 Steel-Rubber Washer	10	y
6	5/16 x 1" Carriage bolt	12	y
7	5/16" Washer	12	y
8	5/16"- Nyloc Nut	12	y
9	Mid and Rear Mount	4	
10	Front Mount	2	
11	Tacoma Roof Driver side	1	
12	Tacoma Roof Passenger Side	1	
13	Roof Rack Rear Panel	1	
14	Roof Rack Front Fairing	1	
15	Aluminum T-Slot	5	
16	Tacoma Rubber Base	4	y
17	T4R Rubber Base	2	y
18	Roof Rack Weather Strip	1	y



RCI OFFROAD

Tacoma Double Cab Roof Rack R2

REV
2

**Use hand tools, impact wrenches may cause damage if over torqued.

1. Remove the factory roof rack if equipped. Remove gutter weather strip by pulling it up. Set it aside because after the install you can cut it and re-install. Locate the mounting holes under the tape and cut the tape to reveal the hole. There are two holes in the front, one in the middle, and two in the rear.

2. On the ground, lay out the driver (item#11) / passenger (item#12) side panels with the mountains facing the correct direction.

Passenger

Driver



Figure 1: Passenger and driver side panels

3. Install the front mounting brackets (item#10) on to the side panels using the 5/16" carriage bolt (item#6), 5/16" flat washer (item#7), and the 5/16" lock nut (item#8). (A lock washer could be used in place of the lock nut). Note* The front brackets are smaller than the rear and have two notches while the middle and rear have four notches.



Figure 2: Front mount bracket

4. Install the middle and rear mounting brackets (item#9) on to the side panels using the 5/16" carriage bolt (item#6), 5/16" flat washer (item#7), and the 5/16" lock nut (item#8).

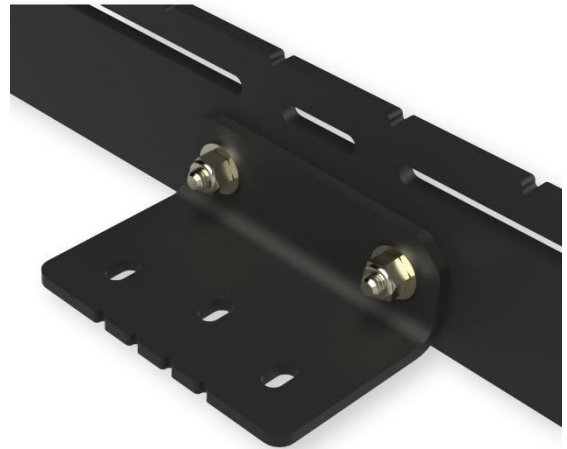


Figure 3: Middle and rear mount bracket

5. On the ground, lay out the 47" T-Slot cross bars (item#15) and the driver (item#11) and passenger (item#12) side panels with the bottom flanges facing in. Orient the opening of the T-Slot facing upwards on your desired side of your Tacoma.



Figure 4: T-slot cross bars lay out

6. Install the front and rear T-Slot crossbars (item#15) using 1/4-20 X 7/8" black button heads (item#1) with 1/4" black washers (item#2). There is a T-nut opening machined on the cross bars to make it easier to install components. It is recommended that this opening face up. Wait to tighten the screws until all cross bars are installed.



Figure 5: T-Slot placement

7. Install the remaining T-Slot cross bars (item#15) using 1/4-20 X 7/8" black button heads (item#1) with 1/4" black washers (item#2). It is recommended to install the remaining cross bars in the 1" slots to ensure equal spacing. Tighten all cross bars now.

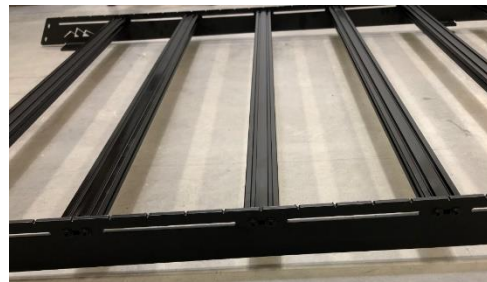


Figure 6: Final T-Slot install

8. Install front (item#14) and rear (item#12) fairings using 1/4-20 X 7/8" black button heads (item#1) with 1/4" black washers (item#2) and black nuts with lock washers (item#3). When installing the front fairing, it is designed to bow towards the front of the truck. It is **IMPORTANT** to push the front fairing as far down as possible. The Fairing should be touching the roof of your truck (figure 9).



Figure 7: Rear fairing



Figure 8: Front fairing



Figure 9: Front fairing location

9. Install front fairing weather strip (item#18) on the bottom edge of the front fairing. Note* A decent amount of pressure is required to seat the weather strip properly.



Figure 9: Front fairing weather strip install

10. Placed drilled rubber blocks (item#16 for the middle and rear & item#17 for the front) on top of your truck in the 6 factory mounting locations matching the bracket locations.



Figure 10: Rubber mounting block

11. Lift assembled rack on top of your Truck and install using 1/4" Rubber washers (item#5) with 10-M6x45mm (item#4) bolts. Make sure that the M6-45mm bolts go through the drilled rubber block to ensure a watertight seal. The Front brackets use two holes, the middle one hole, and the rear two holes to mount the rack to the truck. ****No silicone is needed to make watertight****



Figure 11: Front attachment points

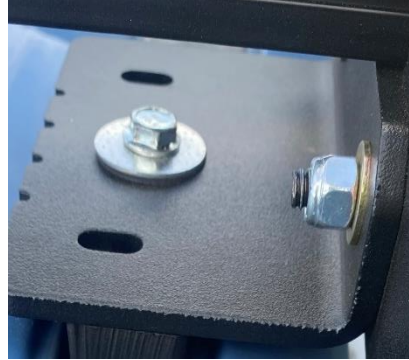


Figure 12: Middle attachment points

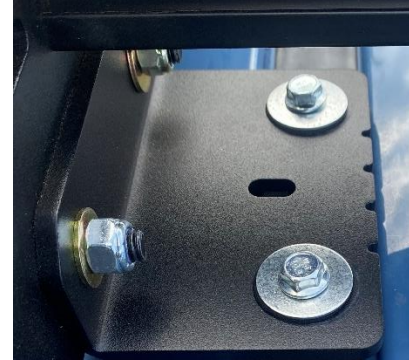


Figure 13: Rear attachment points

12. Attach all your accessories via endless mounting options. (Give us a call if you have any questions regarding optional accessories that our rack can accommodate)



Enjoy the new roof rack!!!

Disclaimer: The products sold by RCI Metalworks are intended for off-road use only, should not be modified, and are for use only on the vehicle(s) specifically stated. RCI Metalworks makes no warranties express or implied, including of fitness for a particular purpose or merchantability. RCI Metalworks will not be liable for any damages arising out of the use or misuse of its products. It is the customers' responsibility to ensure the products are safely and properly attached to the vehicle, and all products should be installed by trained professionals. We strive to maintain extremely high quality standards; however, all RCI Metalworks products are individually handcrafted, may vary slightly, and may contain minor imperfections. Due to the nature of raw aluminum, the material may have minor scratches and other blemishes caused by the manufacturing process, especially on the back side of product. RCI Metalworks is constantly seeking to improve its products and reserves the right to make changes to any product.