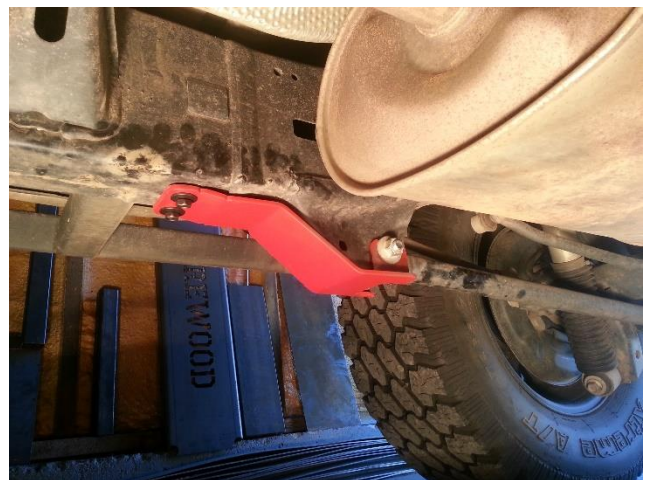


# RCI Lower Link Skid Plate Installation

1. Apply paint or other rust preventive coating if plate was purchased in bare steel.
2. Lift and safely secure rear of vehicle with floor jack. Block front tires to prevent vehicle from rolling forward and rear tires to prevent axle from rotating back when lower link bolts are removed. This will make installation of new hardware MUCH simpler.
3. Using a 19mm open end wrench and impact driver with 19mm socket, remove the lower link bolt on ONE side of vehicle at a time.
4. Hold lower link skid plate in position over the mount and align linkage bolt holes with corresponding holes on the skid plate.
5. Mark bottom of the vehicle chassis with a marker at locations of holes that will need to be drilled at front of skid plate.
6. Remove the lower link skid plate and drill the two holes using a 1/4" drill bit.
7. Re-install lower link skid plate, installing the M14 bolt first. Use washers on both sides of the mount and install with the M14 Lock-nut on the inside of vehicle frame.
8. Install 5/16" thread forming bolts into the previously drilled holes. The bolts are designed to form their own threads but it may take extra force to get the bolts started. Be careful not to over-tighten and strip the bolt holes.
9. Tighten the linkage main bolt to factory specs, and then repeat process on other side of vehicle.

## INCLUDED HARDWARE KIT

A.	M14 x 100mm Hex Head Bolts	2 ea.
B.	M14 Washers	4 ea.
C.	M14 Lock-nuts	2 ea.
D.	Thread Forming Bolts	4 ea.



**Enjoy the new protection!!!**

Disclaimer: The products sold by RCI Metalworks are intended for off-road use only, should not be modified, and are for use only on the vehicle(s) specifically stated. RCI Metalworks makes no warranties express or implied, including of fitness for a particular purpose or merchantability. RCI Metalworks will not be liable for any damages arising out of the use or misuse of its products. It is the customers' responsibility to ensure the products are safely and properly attached to the vehicle, and all products should be installed by trained professionals. We strive to maintain extremely high quality standards; however, all RCI Metalworks products are individually handcrafted, may vary slightly, and may contain minor imperfections. Due to the nature of raw aluminum, the material may have minor scratches and other blemishes caused by the manufacturing process, especially on the back side of product. RCI Metalworks is constantly seeking to improve its products and reserves the right to make changes to any product.