

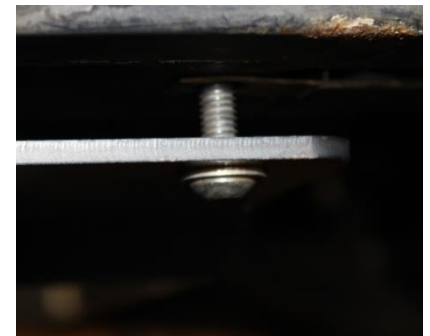
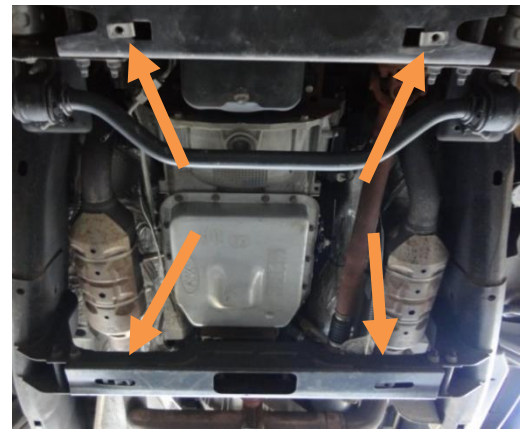
RCI 2004-08 F-150 Transmission Skid Plate Installation

Included Hardware Kit

1. If purchased in combination with front skid plate, install front plate first before proceeding with installation.
2. Insert the round backer discs into the Transfer-case frame cross-member. To do this insert them vertically into the elongated opening on either side and then rotate the disc so that it sits horizontally with the speed clip opening facing down.
3. Install the M10 speed clips through square openings on transmission cross-member. Note that these holes may have plugs in them that will need to be removed. (If installing with front skid plate, these two holes will already have speed clips in them.)
4. Loosen the rear two bolts of the front plate about half way, (allowing front plate to drop as bolts are loosened) until about ½” of thread is visible between the truck chassis and plate.
5. If no front plate is to be used, install bolts with washers in the same manner leaving approximately ½” of thread exposed.
6. Carefully lift the transmission skid plate into place with the elongated notches facing the front of the truck. Use the help of a second person if necessary. Align notches with the loosened bolts from step 5 and slide skid plate in, sandwiching it between the front plate and vehicle frame. Do not tighten bolts until rear bolts have been aligned and tightened.
7. Continue to hold plate up to avoid from sliding out in the front, and install the rear two M8 x 30mm bolts with washers. You may have to adjust the position of the previously installed discs so that the speed clip holes line up with skid plate mounting holes.
8. Fully tighten all bolts, including oil drain cover if equipped.

| | | |
|----|-----------------------------|-------|
| A. | M10 Speed Clips* | 2 ea. |
| B. | M10 x 1.5 x 35mm Hex Bolts* | 2 ea. |
| C. | 3/8" Washers* | 2 ea. |
| D. | M8 Speed Clips | 2 ea. |
| E. | M8 x 1.25 x 30mm Hex Bolts | 2 ea. |
| F. | 5/16" Washers | 2 ea. |
| G. | Round Backer Discs | 2 ea. |

*Included with Front Skid if purchased together



Enjoy the new protection!!!

Disclaimer: The products sold by RCI Metalworks are intended for off-road use only, should not be modified, and are for use only on the vehicle(s) specifically stated. RCI Metalworks makes no warranties express or implied, including of fitness for a particular purpose or merchantability. RCI Metalworks will not be liable for any damages arising out of the use or misuse of its products. It is the customers' responsibility to ensure the products are safely and properly attached to the vehicle, and all products should be installed by trained professionals. We strive to maintain extremely high quality standards; however, all RCI Metalworks products are individually handcrafted, may vary slightly, and may contain minor imperfections. Due to the nature of raw aluminum, the material may have minor scratches and other blemishes caused by the manufacturing process, especially on the back side of product. RCI Metalworks is constantly seeking to improve its products and reserves the right to make changes to any product.